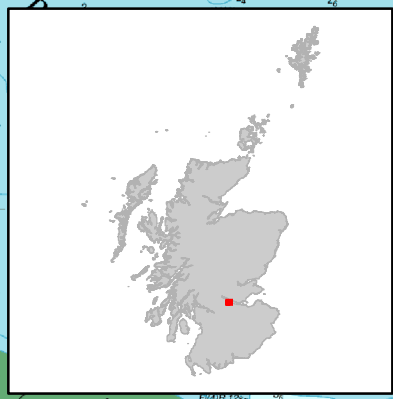
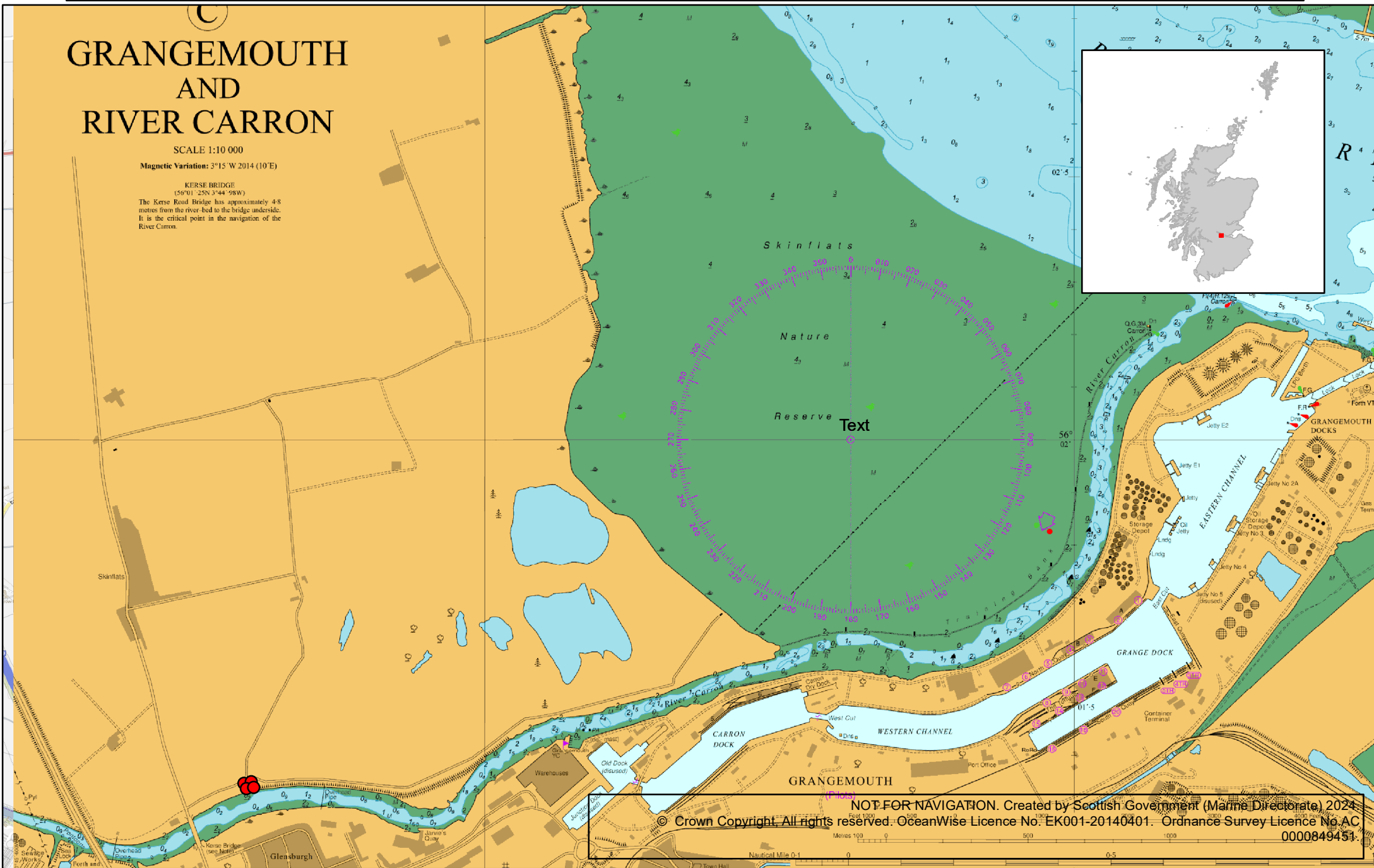


# GRANGEMOUTH AND RIVER CARRON

SCALE 1:10 000

Magnetic Variation: 3°15' W 2014 (10'E)

**KERSE BRIDGE**  
(56°01' 25N 3°44' 58W)  
The Kerse Road Bridge has approximately 4.8 metres from the river bed to the bridge underside. It is the critical point in the navigation of the River Carron.



NOT FOR NAVIGATION. Created by Scottish Government (Marine Directorate) 2024  
© Crown Copyright. All rights reserved. OceanWise Licence No. EK001-20140401. Ordnance Survey Licence No. AC 0000849451.

