

Not For Navigation

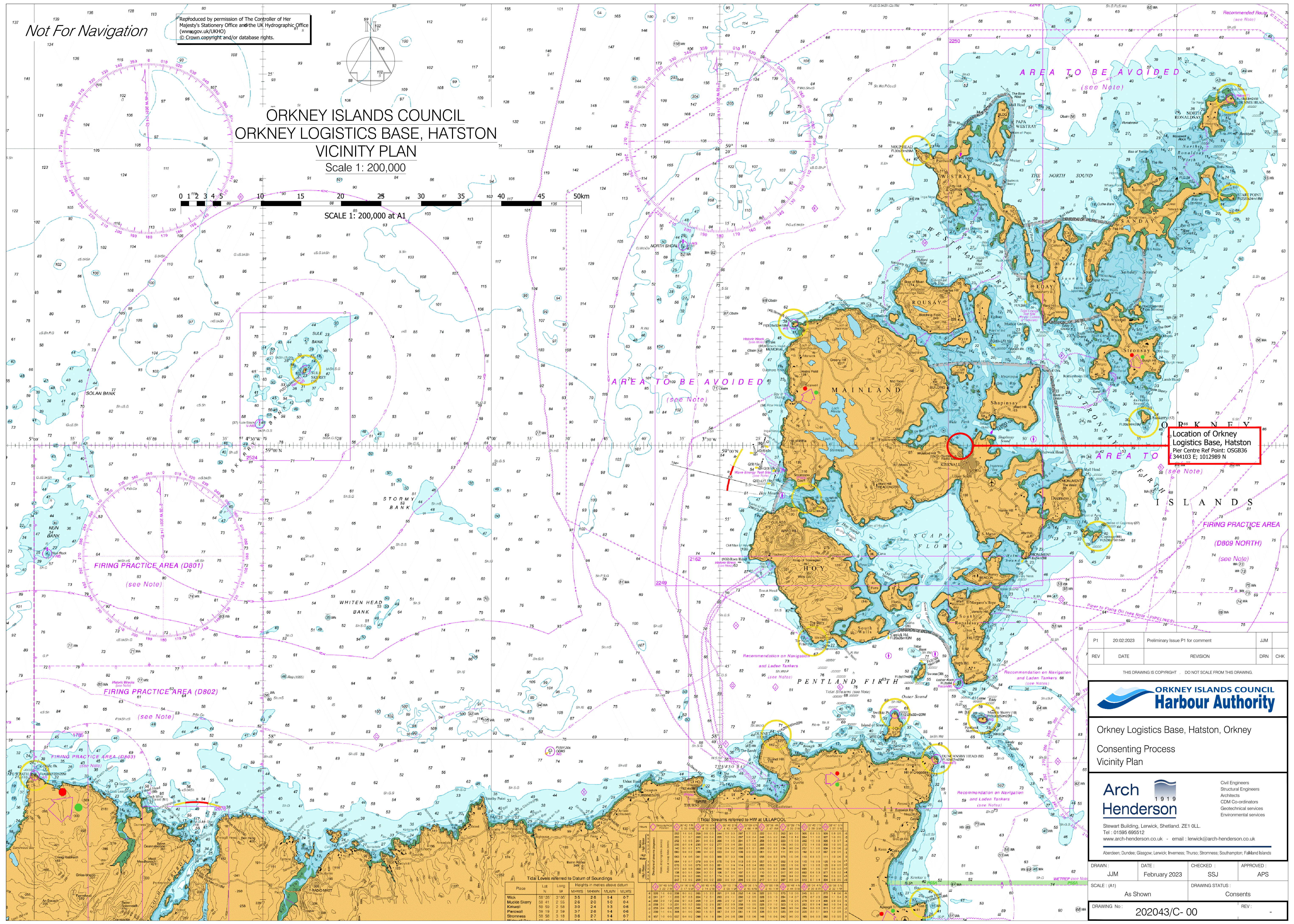
Reproduced by permission of The Controller of Her Majesty's Stationery Office and the UK Hydrographic Office (www.gov.uk/UKHO) © Crown copyright and/or database rights.

# ORKNEY ISLANDS COUNCIL ORKNEY LOGISTICS BASE, HATSTON VICINITY PLAN

Scale 1: 200,000

0 1 2 3 4 5 10 15 20 25 30 35 40 45 50km

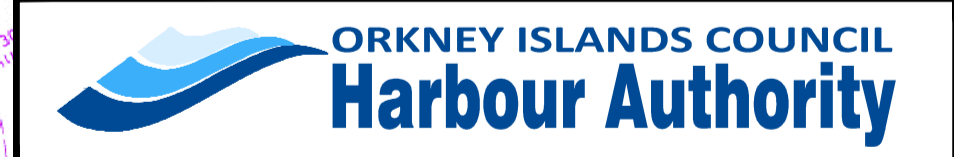
SCALE 1: 200,000 at A1



Location of Orkney  
Logistics Base, Hatston  
Pier Centre Ref Point: OSGB36  
344103 E; 1012989 N

P1	20.02.2023	Preliminary Issue P1 for comment	JJM
REV	DATE	REVISION	DRN
			CHK

THIS DRAWING IS COPYRIGHT. DO NOT SCALE FROM THIS DRAWING.



Orkney Logistics Base, Hatston, Orkney  
Consenting Process  
Vicinity Plan



Stewart Building, Lerwick, Shetland, ZE1 0LL  
Tel : 01595 695512  
www.arch-henderson.co.uk - email : lerwick@arch-henderson.co.uk

DRAWN:	DATE:	CHECKED:	APPROVED:
JJM	February 2023	SSJ	APS
SCALE: (A1)	As Shown	DRAWING STATUS:	Consents

DRAWING No: 202043/C- 00 REV: -

Tidal Levels referred to Datum of Soundings

Place	Lat N	Long W	MHW	MHWN	MLWN	MLWS
Wick	59 20	3 05	3.5	2.8	1.4	0.7
Maclise Skerry	59 41	2 55	2.6	2.0	1.0	0.4
Kirkwall	59 59	2 58	3.0	2.4	1.3	0.6
Pierowall	59 19	2 59	3.7	2.6	1.4	0.6
Stromness	59 58	3 18	3.6	2.7	1.4	0.7