



CHART EXTRACT

Drawing Date: 27/06/18

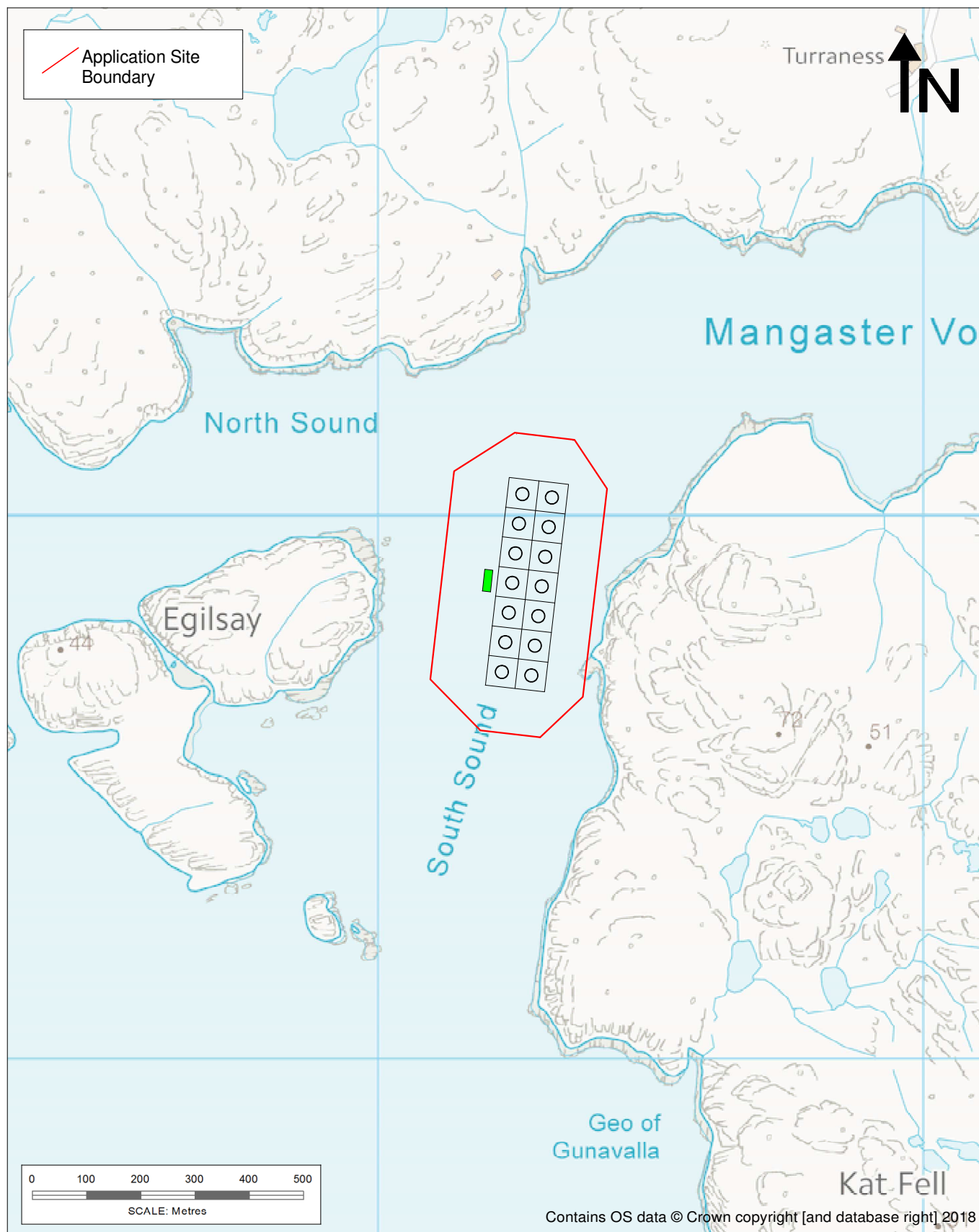
Revision: -

Scale: 1:15,000 at A4

South Sound, Mangaster Voe - Shetland

Description:
Chart extract for the proposed cage configuration at the South Sound, Mangaster Voe marine fish farm. Eleven 100m circumference cages in a 55m grid.





LOCATION PLAN

Drawing Date: 10/07/18

Revision: -

Scale: 1:10,000 at A4

South Sound, Mangaster Voe - Shetland

Description:

Location plan for the existing cage configuration and site boundary at the South Sound, Mangaster Voe marine fish farm [ref. 2013/039/MAR]. Fourteen 80m circumference cages in a 55m grid.

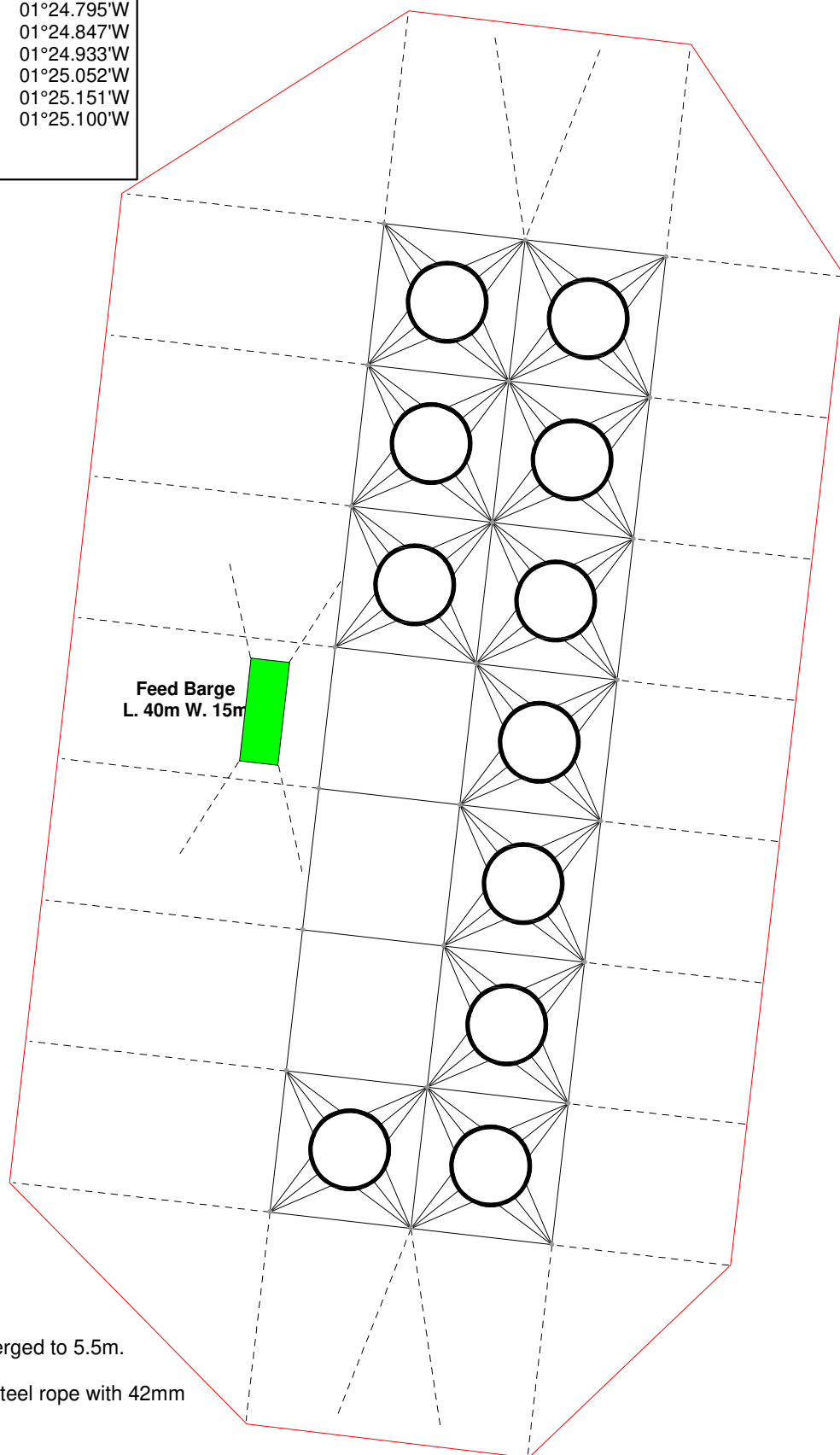


**Scottish
Sea Farms**

Site Boundary Line Coordinates & Mooring Containment Area (red outline)

	Latitude	Longitude
Extremity 1	60°24.837'N	01°24.978'W
Extremity 2	60°24.829'N	01°24.859'W
Extremity 3	60°24.781'N	01°24.795'W
Extremity 4	60°24.575'N	01°24.847'W
Extremity 5	60°24.535'N	01°24.933'W
Extremity 6	60°24.543'N	01°25.052'W
Extremity 7	60°24.593'N	01°25.151'W
Extremity 8	60°24.799'N	01°25.100'W

Site Centre: HU 32259 69870



Moorings notes:

- 1) 55m x 55m mooring grid, submerged to 5.5m.
- 2) Anchors: 750kg.
- 3) Moorings comprise 60mm sea steel rope with 42mm ground chain.

SITE PLAN

South Sound, Mangaster Voe - Shetland

Drawing Date: 10/07/18

Revision: -

Scale: 1:2,500 at A4

Description:

Site plan for the proposed cage configuration at the South Sound, Mangaster Voe marine fish farm. Eleven 100m circumference cages in a 55m grid.



**Scottish
Sea Farms**