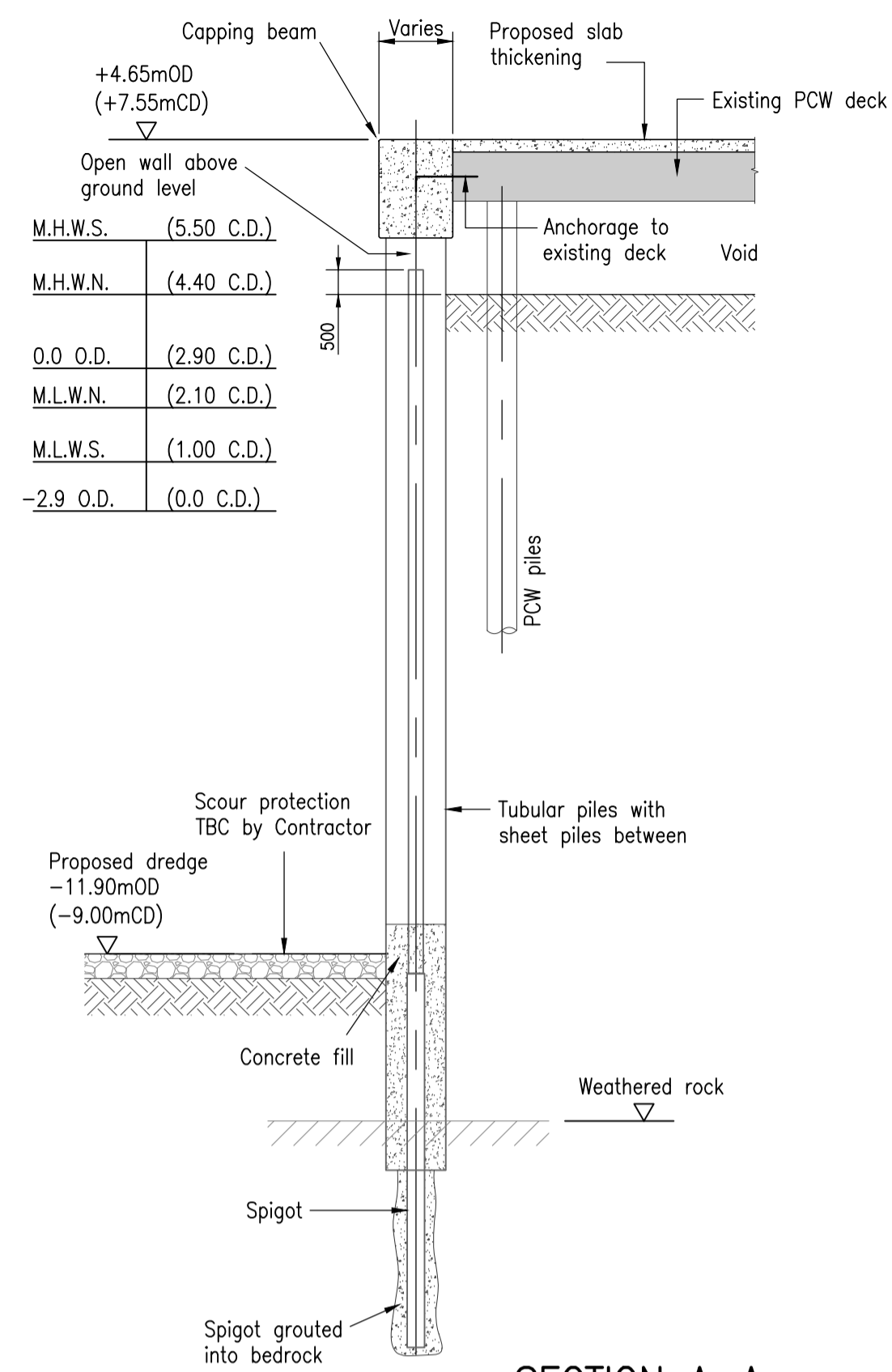
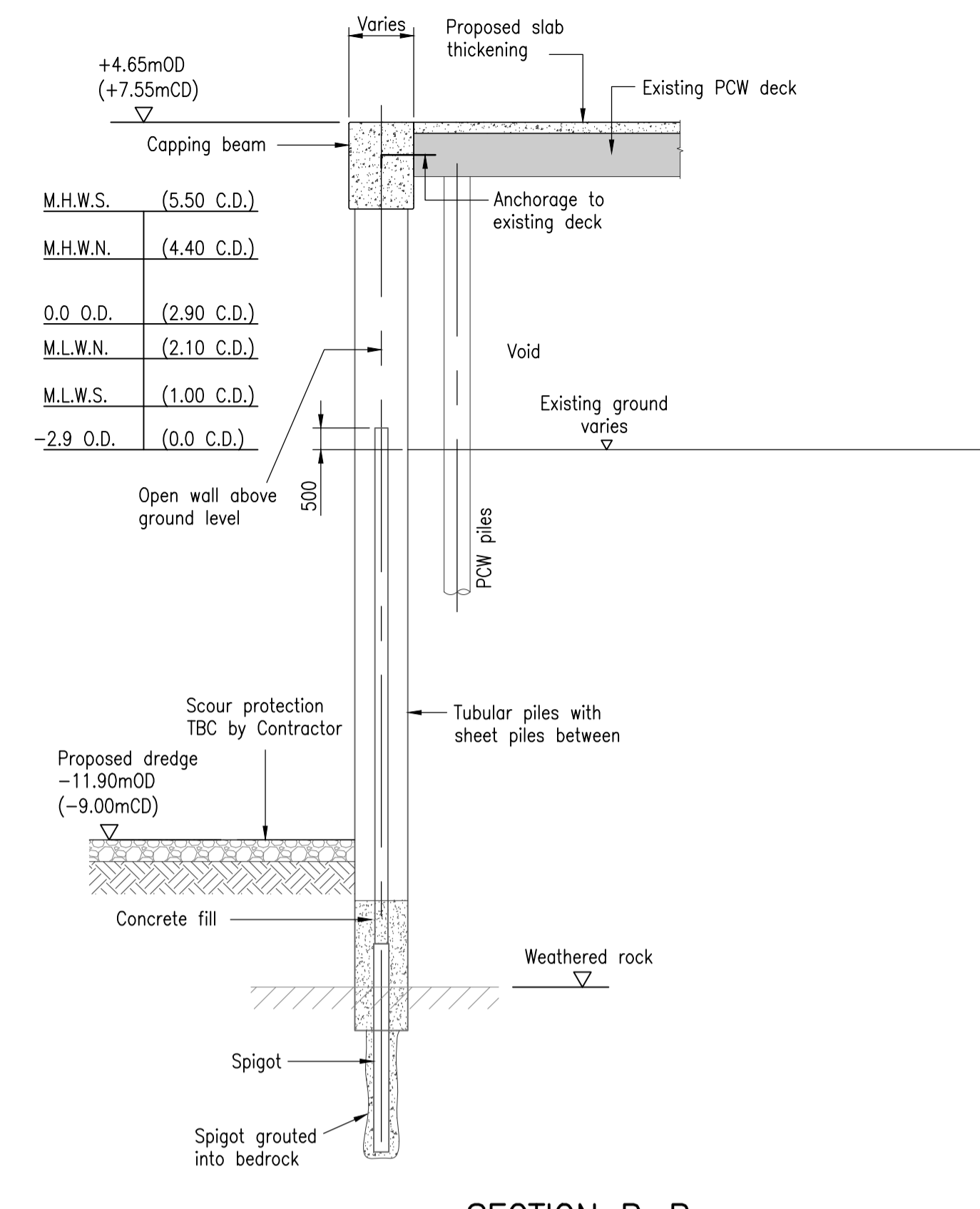


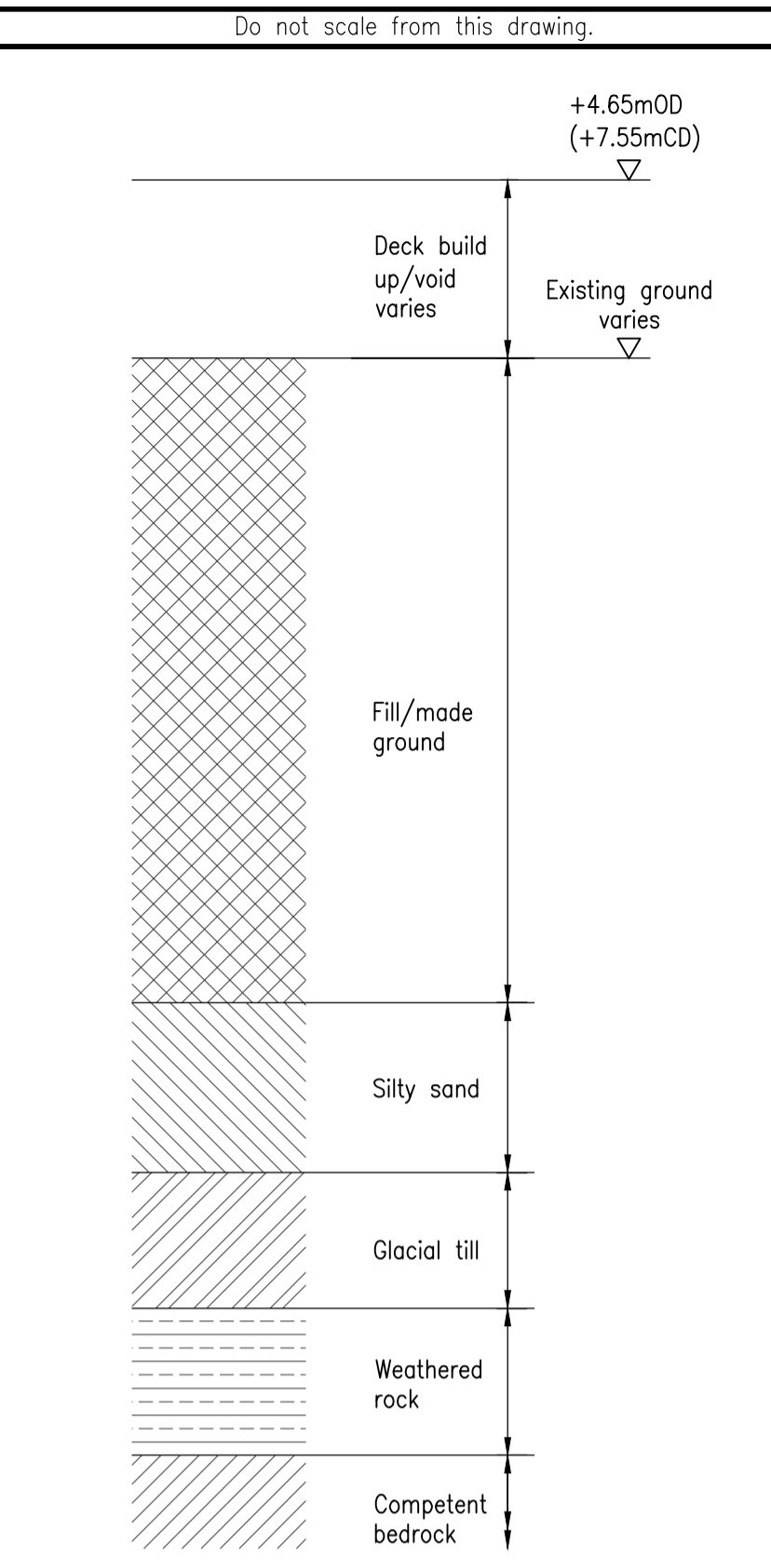
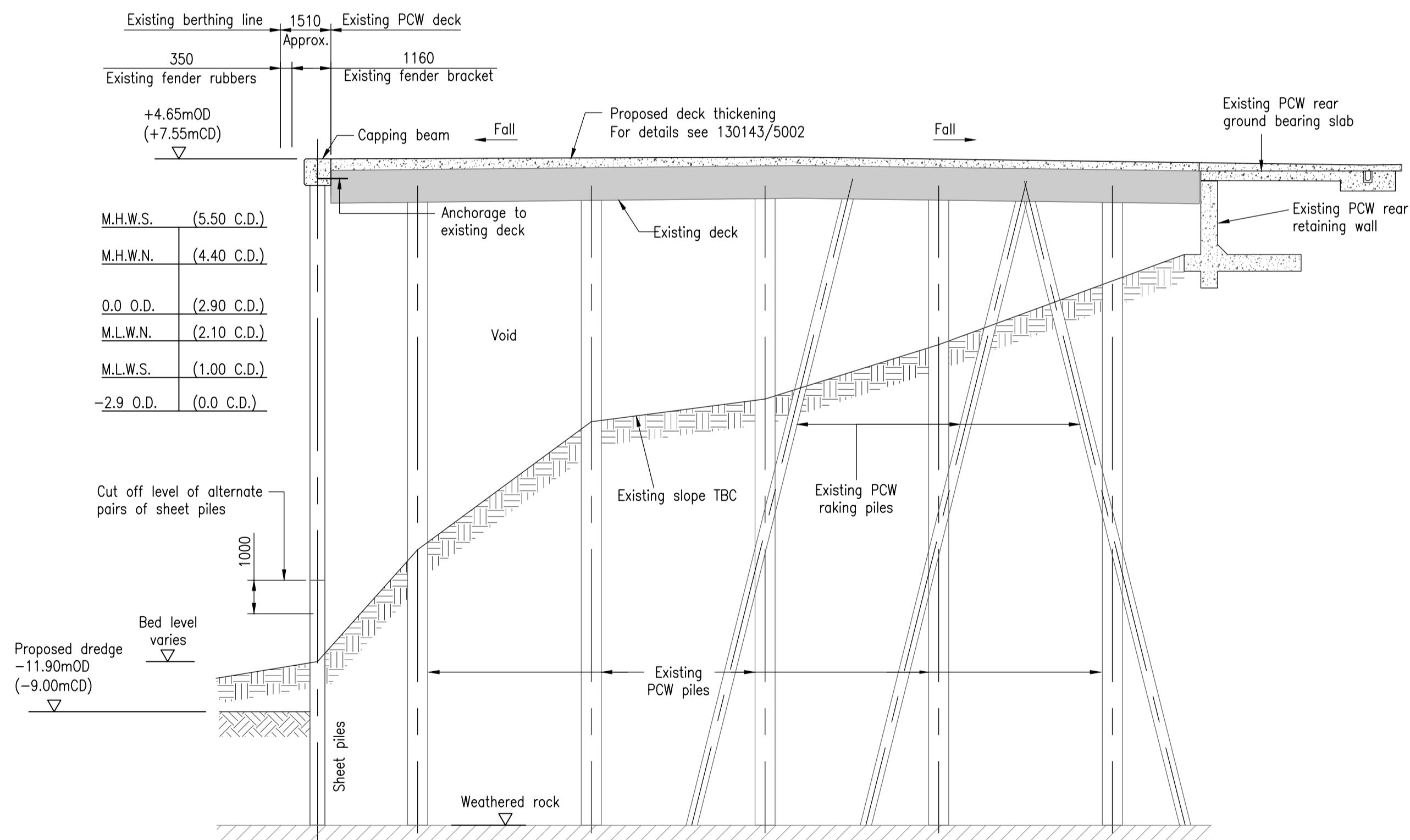
PLAN ON PROPOSED WORKS
Scale 1-100



SECTION A-A
Scale 1-125



SECTION B-B
Scale 1-125



TYPICAL SECTION THROUGH GROUND STRATA
Scale 1-125
Refer to Ground Investigation report D/I/D/130143/18

DRAWING FOR ILLUSTRATION PURPOSES ONLY AND NOT FOR CONSTRUCTION

SAFETY HEALTH AND ENVIRONMENTAL INFORMATION

IN ADDITION TO THE HAZARD/RISKS NORMALLY ASSOCIATED WITH THE TYPES OF WORK DETAILED ON THIS DRAWING, NOTE THE FOLLOWING RISKS AND INFORMATION.

RISKS LISTED HERE ARE NOT EXHAUSTIVE. REFER TO DESIGN ASSESSMENT FORM NO.

CONSTRUCTION

UNSTABLE STRUCTURES - PRECAST UNITS.
WORKING AT HEIGHT
TIDAL WORKING

DEMOLITION

NO ABNORMAL HAZARDS

FOR INFORMATION RELATING TO USE, CLEANING AND MAINTENANCE SEE THE HEALTH AND SAFETY FILE

IT IS ASSUMED THAT ALL WORKS WILL BE CARRIED OUT BY A COMPETENT CONTRACTOR WORKING, WHERE APPROPRIATE, TO AN APPROVED METHOD STATEMENT.

- PILING OBSTRUCTIONS.
- CORRECT SEQUENCING TO ENSURE STABILITY.
- MAINTAIN CORRECT FILE GRID AROUND OBSTRUCTIONS.
- AS BUILT SURVEY PRIOR TO ORDERING REBAR.
- CAPWAP TESTING OF INITIAL 10% OF PILES AND ALSO ADDITIONAL 10% OF FINAL PILES.

Notes:
Condition surveys and archive drawings for existing PCW are included in site information. Refer to 130143/5000 for location. Refer to specification D/I/D/130143/30 for loading requirements.

Rev.	Date	Description	Drawn	Checked	Approved
E	04/02/20	TOPO UPDATED	SB	MD	MC
D	20/01/20	MINOR REVISIONS	SB	MD	MC
C	13/01/20	REVISED TO SUIT CLIENTS COMMENTS	SB	MD	MC
B	08/01/20	REVISED TO SUIT CLIENTS COMMENTS	SB	MD	MC
A	23/12/19	MINOR REVISIONS	SB	MD	MC



Client: **FORTH PORTS DUNDEE**

Project Title: **PORT OF DUNDEE EAST REDEVELOPMENT**

Drawing Title: **MARINE WORKS RORO BERTH COMBI END WALL GENERAL ARRANGEMENT**

FAIRHURST

1 Arngrove Court, Barrack Road, Newcastle-upon-Tyne, NE4 6QB
Tel: 0191 221 9505 Fax: 0844 381 4412

Scale at: AS SHOWN
Status: Preliminary

Drawn: SB
Checked: MD
Approved: MC

Date: 12/12/19
Date: 12/12/19
Date: 12/12/19

Drawing No.: 130143/5003
Revision: E