



Eastern Green Link 2 - Marine Scheme

Environmental Appraisal Report Volume 3

Appendix 6.2 - Commercial Fisheries Consultation Report

nationalgrid



National Grid Electricity Transmission and Scottish Hydro Electric Transmission plc

June 2022

Table of Contents

6.5	Commercial Fisheries Consultation Report	1
6.5.1	Introduction.....	1
6.5.2	Consultation Process	1
6.5.3	Information Gathered During Consultation.....	2
6.5.4	Scallop Dredging	11
Appendix A	14

Figures

Figure 1: Potting/creeling grounds identified by Scottish fisheries stakeholders (BMM, 2022) (darker colours shown where grounds from various vessels overlap)	5
Figure 2: Scottish Whitefish Producers Association Creel Positions (February 2019 to February 2022)	6
Figure 3: Potting grounds identified by English fisheries stakeholders (BMM, 2022) (darker colours shown where grounds from various vessels overlap)	10
Figure 4: Scallop dredging grounds identified by Scottish fisheries stakeholders (BMM, 2022) (darker colours shown where grounds from various vessels overlap)	13

Tables

Table 1: Scottish Fisheries Stakeholders Consulted	1
Table 2: English Fisheries Stakeholders Consulted	2
Table 3: Questionnaires Returned by Vessel's Home Port and Fishing Method.....	2
Table 4: Information gathered from Scottish Potters/Creelers	4
Table 5: Information gathered from English Potters/Creelers	8
Table 6: Information Gathered from Vessels Engaged in Scallop Dredging	12

6.5 Commercial Fisheries Consultation Report

6.5.1 Introduction

This report summarises the baseline consultation undertaken with fisheries stakeholders by Brown & May Marine Ltd (BMM) for the Marine Scheme. The purpose of the consultation was to collect information on fishing activities to help inform the development of the baseline, and to meaningfully engage with fisheries in order to identify the key concerns of the fishing industry in relation to the Marine Installation Corridor. This was undertaken to inform Chapter 14: Commercial Fisheries of the Environmental Appraisal Report (EAR) for the Marine Scheme.

6.5.2 Consultation Process

A summary of the consultation undertaken with Scottish and English fisheries stakeholders is provided in Table 1 and Table 2 respectively and described in Section 6.4.1 of the EAR.

As shown, consultation was carried out with national and regional organisations via Teams meetings. In addition, a sample of local fisheries stakeholders were consulted face-to-face at local ports using a questionnaire as the basis for consultation (Appendix A). Where willing, fisheries stakeholders who were unable to meet in person were contacted by BMM via email/phone and submitted questionnaires electronically.

As shown in Table 1 and Table 2, most local fisheries stakeholders contacted provided information on their activities.

Completed questionnaires were returned with information on the activities of a total of 46 fishing vessels (14 based at local Scottish ports and 32 based at local English ports).

Table 1: Scottish Fisheries Stakeholders Consulted

Meeting Date	Format	Organisation/Association/Fishermen Consulted	Completed questionnaires returned
2/11/2021	Teams call	Scottish Fishermen's Federation (SFF) and Scottish White Fish Producers Association (SWFPA)	n/a
9/11/2021	Teams call	North & East Coast Regional Inshore Fisheries Group (N&EC RIFG)	
9/12/2021 – 19/12/2021	Email	Local fishermen based in Peterhead, Fraserburgh and Boddam	Yes
17/12/2021	Face-to-face meeting	Buchan Inshore Fisheries Association	No
9/12/2021	Email	Local fisheries representative representing scallop dredgers active in the area with home ports in Peterhead, Fraserburgh, Dumfries ¹ , Shoreham ¹ and Brixham ¹	Yes
01/02/2022	Face-to-face meeting	Local fisherman based in Eyemouth	Yes

¹. Some nomadic scallop dredgers for which questionnaires were returned have home ports in England (Shoreham and Brixham), however, they are operated by Scottish companies and therefore have been included under the Scottish fisheries stakeholder consultation list

Table 2: English Fisheries Stakeholders Consulted

Meeting Date	Format	Organisation/Association/Fishermen Consulted	Completed questionnaires returned
11/11/2021	Teams call	National Federation of Fisherman's Organisations (NFFO)	n/a
1/12/2021	Teams call	North Eastern Inshore Fisheries Conservation Authority (NEIFCA)	
8/12/2021	Face-to-face meeting	Local fisheries representatives based in Bridlington	Yes
9/12/2021	Face-to-face meeting	Local fishermen based in Scarborough	Yes
9/12/2021	Face-to-face meeting	Local fishermen based in Whitby	Yes

6.5.3 Information Gathered During Consultation

Information from a total of 46 vessels was collected during consultation (Table 3).

All the data gathered was anonymised. Information on fishing grounds (i.e., grounds drawn on paper charts and gear locations/towing tracks from plotter shots) was georeferenced where possible and amalgamated separately by fishing method for Scottish and English vessels (Figure 1 to Figure 4).

Table 3: Questionnaires Returned by Vessel's Home Port and Fishing Method

Scottish/English Stakeholder	Home Port	No. Potters/Creelers	No. Dredgers
Scottish	Boddam Harbour	2	-
	Eyemouth	1	-
	Fraserburgh	-	1
	Peterhead	2	2
	Dumfries	-	4
	Shoreham	-	1
	Brixham	-	1
English	Bridlington	24	-
	Scarborough	4	-
	Whitby	3	-
	Flamborough	1	-
Total		37	9

6.5.3.1 Potting / Creeling

A total of 37 vessels that engage in potting / creeling as their primary fishing activity in areas of relevance to the Marine Installation Corridor provided information during consultation (five Scottish, 32 English). A summary of the information provided by these vessels is provided in the sections below.

6.5.3.1.1 Scottish Potters / Creelers

Only five Scottish creelers returned completed questionnaires. This included vessels based at Peterhead, Boddam Harbour and Eyemouth. The Buchan Inshore Fisheries Organisation was contacted, however, declined to provide information on the activities of their members at the time of the consultation.

Vessel length ranged from 6.02 m to 11.95 m. The duration of a typical fishing trip was reported to be between three and 24 hours. Steaming distances ranged from two to 30 nautical miles (NM).

The primary target species identified by the Scottish creelers/potters consulted were brown crab, lobster and velvet crab.

The number of pots used was reported to range from a minimum of 70 to a maximum of 1,280, with number of fleets ranging between seven and 32.

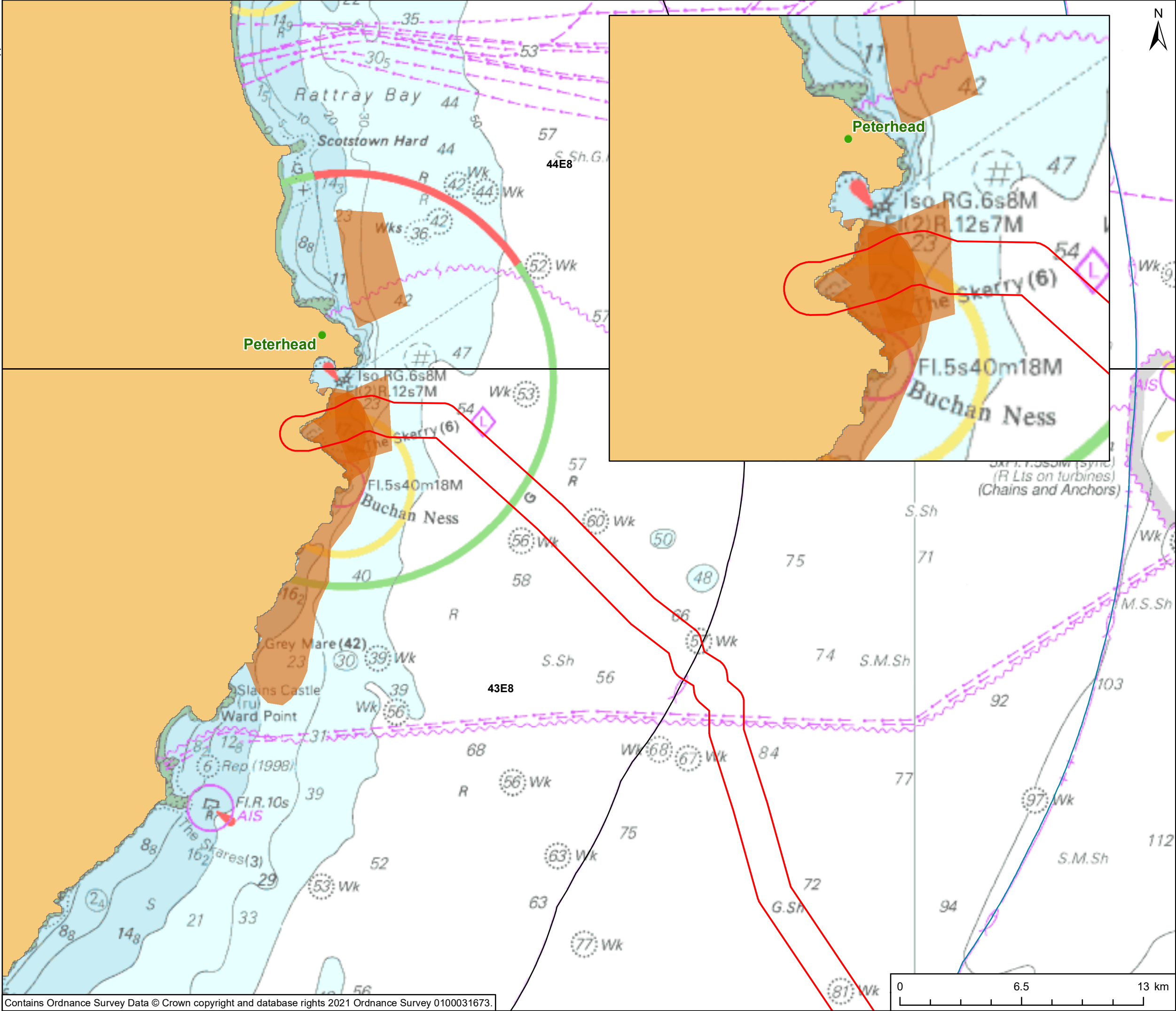
Vessels generally identified the main season to run between March and October/November.

The distribution of potting/creeling activity by the Scottish vessels consulted in areas of relevance to the Marine Installation Corridor is illustrated in Figure 1. As shown, these vessels concentrate their activity in inshore areas around the Scottish landfall.

Although at lower levels, it is understood that some Scottish vessels target offshore grounds which may overlap with other sections of the Marine Installation Corridor. During consultation, a questionnaire was returned by a creeler based in Eyemouth that identified creeling grounds overlapping with the Marine Installation Corridor in areas around ICES rectangles 42E8, 41E8 and 41E9. As illustrated in Figure 2, the presence of static gear around this area has been reported to the SWFPA. In addition, records from the SWFPA, also suggest some potential offshore potting/creeling activity in areas that overlap with the Marine Installation Corridor within rectangle 43E8 (Figure 2).

Table 4: Information gathered from Scottish Potters/Creelers

Vessel Length (m)	Average No. Days Fishing Per Year	Typical Fishing Trip Duration	Steamed Distance (NM)	Fishing Gear	Seasonality	Target species
6.02	200	5 hours	2 NM	120 mixed creels	Creels from 01 March until 01 November. Mackerel line fishing from 01 July until 01 October.	Lobster and velvet crab using creels. Mackerel on the lines
6.3	100	5 hours	6 NM	Pots and Hooks and Lines Double eyed lobster pots, 100 pots in fleets of up to 5	March to October	Lobster
11.95	240	24 hours	4 hours at 7/8 knots (28 -32 NM)	32 fleets, 40 pots per fleet.	-	Crab, lobster
6.25	50	3 hours	2 NM	70 creels, fleets of ten	Seasonal	Crab, lobster, velvets
9.4	200	8 hours	-	20 fleets, 20 pots per fleet	-	Velvet and Lobster



Contains Ordnance Survey Data © Crown copyright and database rights 2021 Ordnance Survey 0100031673.

Coordinate System: WGS 1984 World Mercator

Scale @ A3 1:190,000

PROJECT
Eastern Green Link 2

- KEY
- Marine Installation Corridor
 - 6 NM Limit
 - UK Territorial Sea Limit
 - ICES Rectangles
 - Scottish Potting Fishing Grounds

NOTES;



TITLE
**Figure 1
Potting Grounds identified
by Scottish Fisheries Stakeholders
During Consultation
Peterhead**

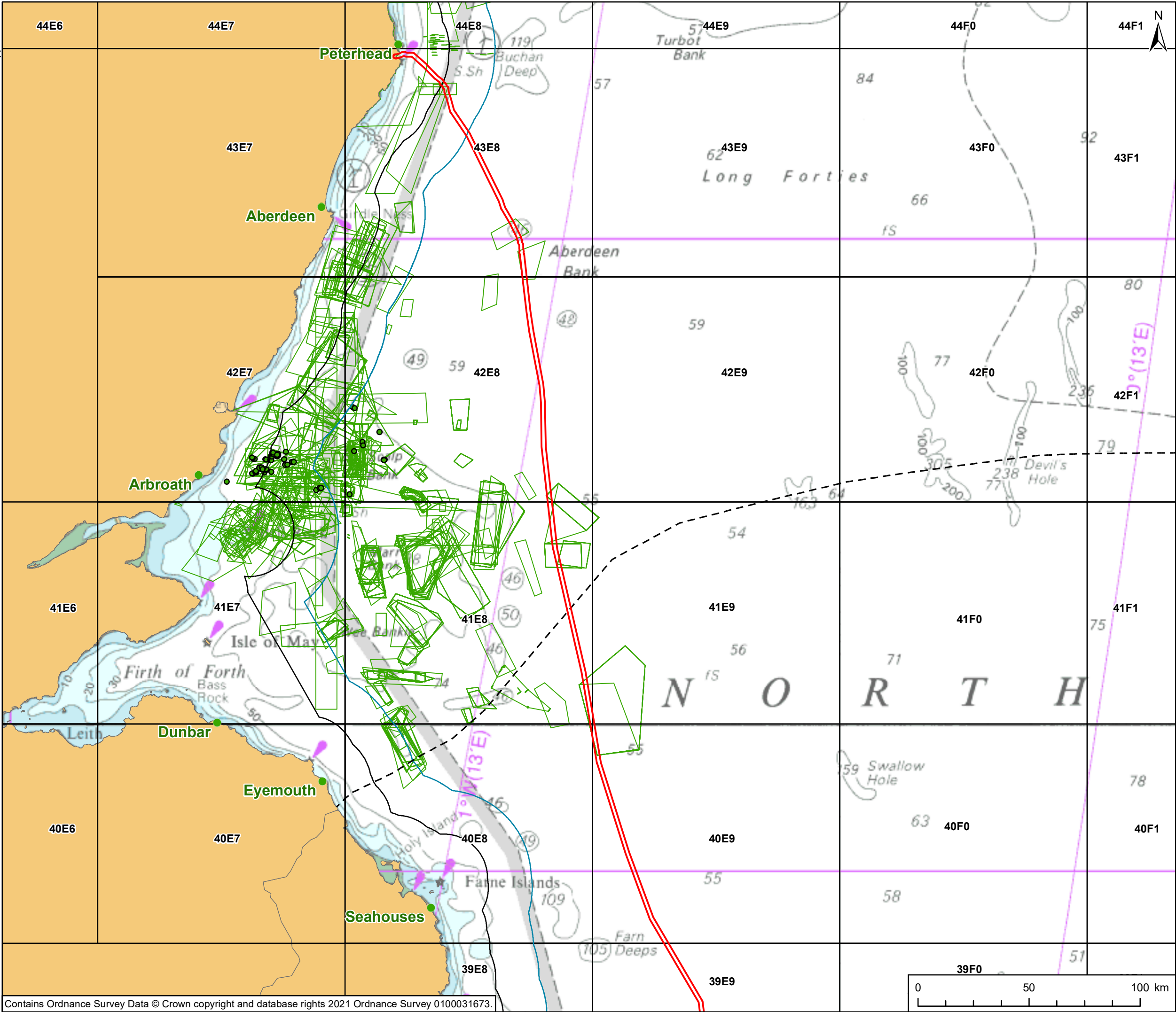
REFERENCE
AEC_SEGL2-03-FG-CON-004

SHEET NUMBER
1 of 1

DATE
20/05/2022

This drawing has been prepared for the use of AECOM's client. It may not be used, modified, reproduced or relied upon by third parties, except as agreed by AECOM or as required by law. AECOM accepts no responsibility, and denies any liability whatsoever, to any party that uses or relies on this drawing without AECOM's express written consent. Do not scale this document. All measurements must be obtained from the stated dimensions.

GIS: VC Checked: HF Approved: SX



Contains Ordnance Survey Data © Crown copyright and database rights 2021 Ordnance Survey 0100031673.

Coordinate System: WGS 1984 World Mercator



PROJECT
Eastern Green Link 2

- KEY
- Marine Installation Corridor
 - Scottish/English Water Border
 - 6 NM Limit
 - UK Territorial Sea Limit
 - ICES Rectangles
 - SWFPA Creel Locations January 2019 to February 2022
 - SWFPA Creel Locations January 2019 to February 2022
 - SWFPA Creel Locations January 2019 to February 2022

NOTES;



TITLE
**Figure 2
Scottish White Fish
Producers Association
Creel Positions
January 2019 to February 2022**

REFERENCE
AEC_SEGL2-03-FG-CON-005

SHEET NUMBER
1 of 1

DATE
20/05/2022

This drawing has been prepared for the use of AECOM's client. It may not be used, modified, reproduced or relied upon by third parties, except as agreed by AECOM or as required by law. AECOM accepts no responsibility, and denies any liability whatsoever, to any party that uses or relies on this drawing without AECOM's express written consent. Do not scale this document. All measurements must be obtained from the stated dimensions.

Scale @ A3 1:1,600,000

6.5.3.2 English Potters/Creelers

During consultation, information was collected for a total of 32 English potters/creelers.

As shown in Table 5, vessel length ranged from 6.2 m to 17.3 m. The primary species targeted by these vessels are lobster and brown crab and activity occurs all year round. Some vessels, however, noted that they target whelk, generally from December to March, when crab numbers drop.

The number of pots used per vessel were reported to be generally over 2,000, with fleet numbers between 60 and 70 and up to 40 pots per fleet.

The distribution of potting/creeling grounds is illustrated in Figure 3 based on information provided by fishermen during consultation.

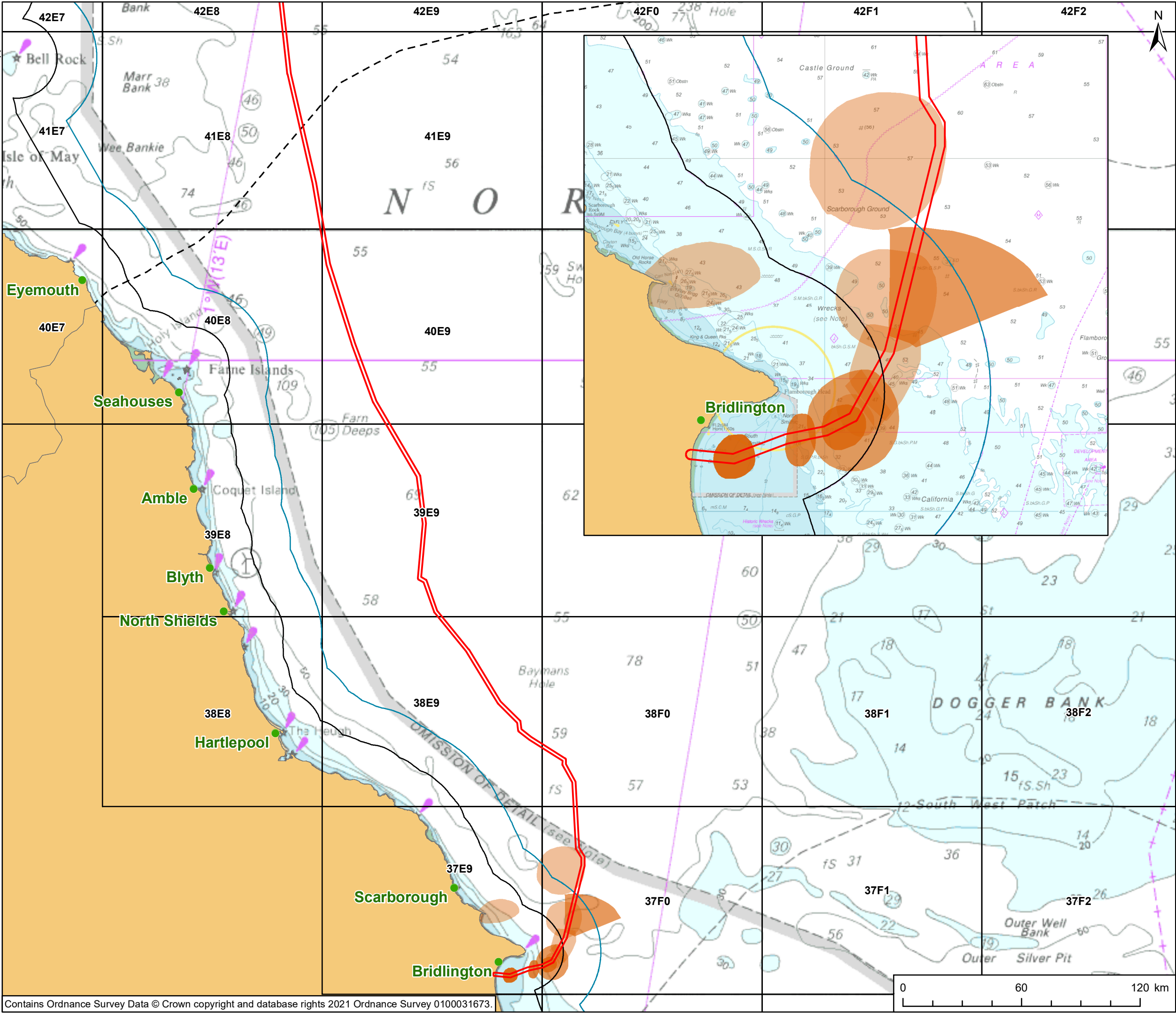
As shown potting/creeling grounds of English vessels concentrate for the most part within the 12 NM limit in areas around the landfall (Figure 3).

Table 5: Information gathered from English Potters/Creelers

Vessel Length (m)	Average No. Days Fishing Per Year	Typical Fishing Trip Duration	Steamed Distance (NM)	Fishing Gear	Seasonality	Target species
11.75	-	-	-	2000 + pots, 60 - 75 fleets of approximately 40 pots	-	-
13.07	-	-	-	2000 + pots, 60 - 75 fleets of approximately 40 pots	-	-
9.85	-	-	-	2000 + pots, 60 - 75 fleets of approximately 40 pots	Whelking from December to March when crab numbers drop	-
14.99	-	-	-	-	-	-
14.99	-	-	-	-	-	-
11.28	-	-	-	2000 + pots, 60 - 75 fleets of approximately 40 pots	-	-
13.95	-	-	-	-	-	-
11.7	-	-	-	2000 + pots, 60 - 75 fleets of approximately 40 pots	Whelking from December to March when crab numbers drop	-
11.92	-	-	-	2000 + pots, 60 - 75 fleets of approximately 40 pots	-	-
15.61	-	-	-	2000 + pots, 60 - 75 fleets of approximately 40 pots	-	-
7.93	-	-	-	-	-	-
14	-	-	-	-	-	-
11.77	-	-	-	2000 + pots, 60 - 75 fleets of approximately 40 pots	-	-
12.49	-	-	-	2000 + pots, 60 - 75 fleets of approximately 40 pots	-	-
12.49	-	-	-	2000 + pots, 60 - 75 fleets of approximately 40 pots	Whelking from December to March when crab numbers drop	-
14.95	-	-	-	2000 + pots, 60 - 75 fleets of approximately 40 pots	Whelking from December to March when crab numbers drop	-

Vessel Length (m)	Average No. Days Fishing Per Year	Typical Fishing Trip Duration	Steamed Distance (NM)	Fishing Gear	Seasonality	Target species
13.6	-	-	-	2000 + pots, 60 - 75 fleets of approximately 40 pots	-	-
8.84	-	-	-	2000 + pots, 60 - 75 fleets of approximately 40 pots	-	-
12.15	-	-	-	-	-	-
12.38	-	-	-	-	-	-
7	-	-	-	-	-	-
9.98	-	-	-	-	-	-
9.75	-	-	-	-	-	-
9.83	-	-	-	-	-	-
9.39	-	-	-	-	-	-
9.8	-	-	-	-	-	-
9.92	-	-	-	-	-	-
14.11	-	-	-	2000 + pots, 60 - 75 fleets of approximately 40 pots		
17.3	-	-	-	-	-	-
6.26	-	-	-	-	-	-
7.93	-	-	-	-	-	-
9.73	-	-	-	-	-	-

GIS: VC Checked: HF Approved: SX



PROJECT
Eastern Green Link 2

- KEY
- Marine Installation Corridor
 - Scottish/English Water Border
 - 6 NM Limit
 - UK Territorial Sea Limit
 - ICES Rectangles
 - English Potting Fishing Grounds

NOTES;

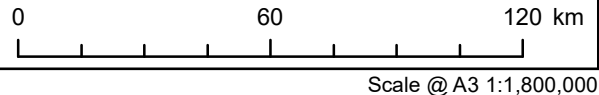


TITLE
**Figure 3
Potting Grounds identified
by English Fisheries Stakeholders
During Consultation**

REFERENCE
AEC_SEGL2-03-FG-CON-001

SHEET NUMBER
1 of 1

DATE
20/05/2022



This drawing has been prepared for the use of AECOM's client. It may not be used, modified, reproduced or relied upon by third parties, except as agreed by AECOM or as required by law. AECOM accepts no responsibility, and denies any liability whatsoever, to any party that uses or relies on this drawing without AECOM's express written consent. Do not scale this document. All measurements must be obtained from the stated dimensions.

6.5.4 Scallop Dredging

Questionnaires were completed and returned for a total of nine scallop dredgers (all Scottish) (Table 6). In all cases, these were nomadic vessels, ranging in length from 21.34 m to 40.11 m.

Fishing trip durations were reported to be from five to seven days and steamed distances typically ranged between 30 and 90 NM from shore.

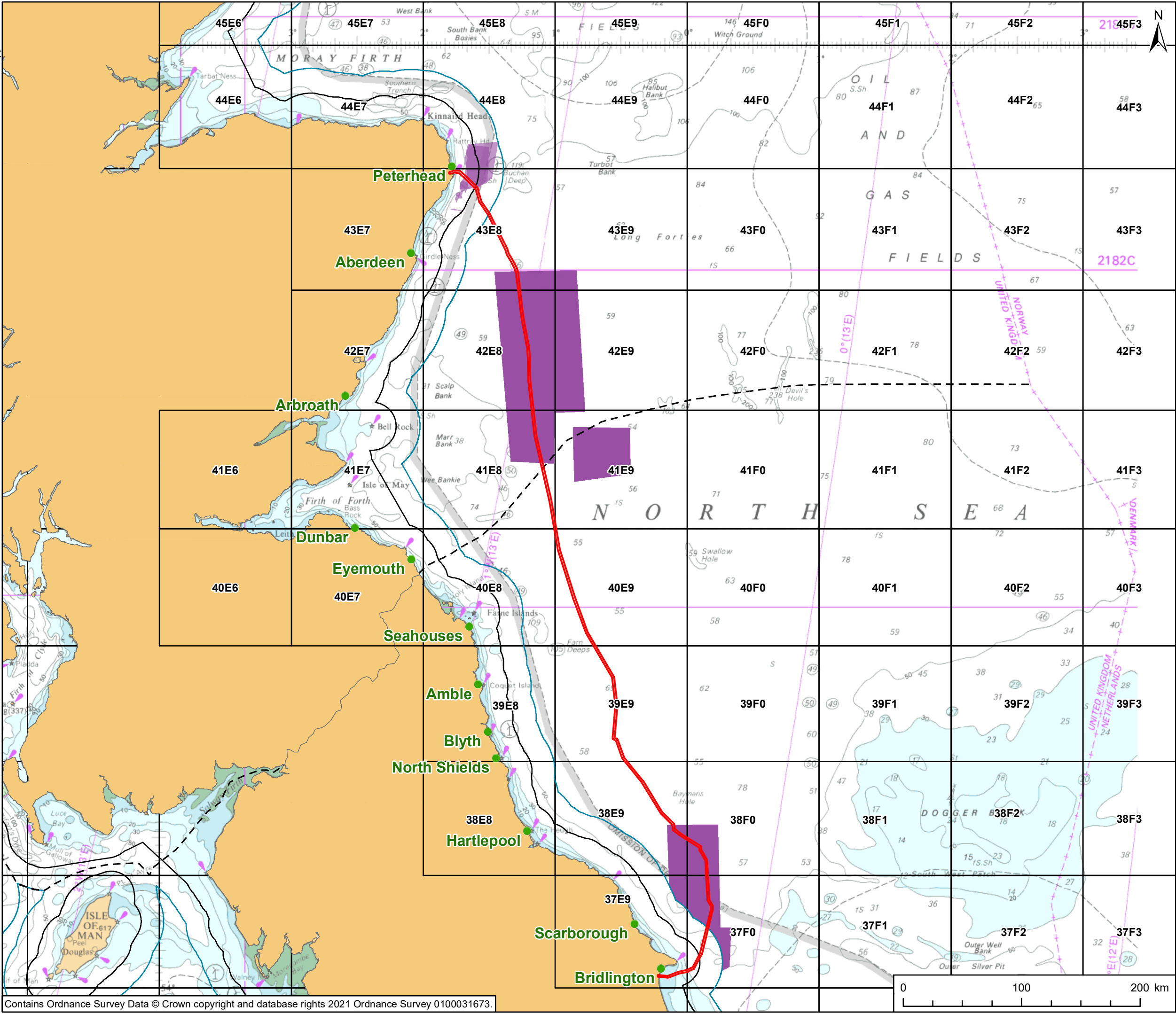
All scallop dredgers identified king scallops as the primary target species, with fishing taking place all year round.

The majority of the vessels consulted operate 14 dredges per side in Scottish waters and up to 18 in English waters.

An indication of the distribution of scallop dredging grounds reported during consultation is provided in Figure 4. As shown, dredging grounds have been identified at various locations along the Marine Installation Corridor in Scottish waters, including around the Scottish landfall, in areas between the 6 – 12 NM limit, and larger grounds in areas that overlap with the Marine Installation Corridor around ICES rectangles 43E8/42E8 and 41E8. In addition, grounds overlapping with the Marine Installation Corridor were reported off the coast of Scarborough, in areas beyond the 12 NM limit, in ICES rectangles 38E9, 38F0 and 37F0.

Table 6: Information Gathered from Vessels Engaged in Scallop Dredging

Vessel Length (m)	Average No. Days Fishing Per Year	Typical Fishing Trip Duration	Steamed Distance (NM)	Fishing Gear	Seasonality	Target species
23.97	275	6-7 days	30 - 90 NM	10 dredges per side	All year	King scallops
34.9	275	6-7 days	30 - 90 NM	14 dredges per side in Scottish waters, 17 dredges per side in English waters	All year	King scallops
35.77	275	6-7 days	30 - 90 NM	14 dredges per side in Scottish waters, 17 dredges per side in English waters	All year	King scallops
40.11	275	6-7 days	30 - 90 NM	14 dredges per side in Scottish waters, 18 dredges per side in English waters	All year	King scallops
36.75	275	6-7 days	30 - 90 NM	14 dredges per side in Scottish waters, 17 dredges per side in English waters	All year	King scallops
23	280	5-6 days	-	12 per side, 10 inside Scottish territorial waters	All year	King scallops
29.16	275	6-7 days	30 - 90 NM	14 dredges per side in Scottish waters, 17 dredges per side in English waters	All year	King scallops
21.34	220	5-6 days	6 NM out to 40 NM from any landfall location	10 per side, 8 per side if inside 6 nm	All year round. Main fishing season off Peterhead is May to October	King scallops
37.89	275	6-7 days	30 - 90 NM	14 dredges per side in Scottish waters, 18 dredges per side in English waters	All year	King scallops



PROJECT
Eastern Green Link 2

- KEY
- Marine Installation Corridor
 - Scottish/English Water Border
 - 6 NM Limit
 - UK Territorial Sea Limit
 - ICES Rectangles
 - Scottish Scallop Dredging Fishing Grounds

NOTES;



TITLE
**Figure 4
Scallop Dredging Grounds identified
by Scottish Fisheries Stakeholders
During Consultation**

REFERENCE
AEC_SEGL2-03-FG-CON-003

SHEET NUMBER
1 of 1

DATE
20/05/2022

Appendix A

COMMERCIAL FISHING ACTIVITIES – EASTERN GREEN LINK 2 CONSULTATION

Skipper name	
Vessel name	
Reg. No	
Home port	
Fishing Association	

VESSEL DETAILS		
Length		metres
Beam		metres
Draft		metres
Vessel tonnage		tonnes
Main engine HP		HP

Average no. of days fishing per year		days
Days at sea allocation this year		days

Typical fishing trip duration		Hours/days
Typical distance steamed per fishing trip		n.miles
Average steaming speed		knots

<p>Principal fishing method(s) (potting, trawling etc.)</p> <p>If main method is potting, what type of pots are used? No. fleets? No. of pots per fleet?</p> <p>If scallops, how many dredges per side?</p> <p>If demersal trawling, twin or single rig?</p>	
<p>Seasonality of fishing method(s) (if multiple methods, seasons for each)</p>	
<p>Main species targeted by method(s)</p>	
<p>Main fishing areas by species, method & month (illustrate on chart provided or provide plotter shot)</p>	