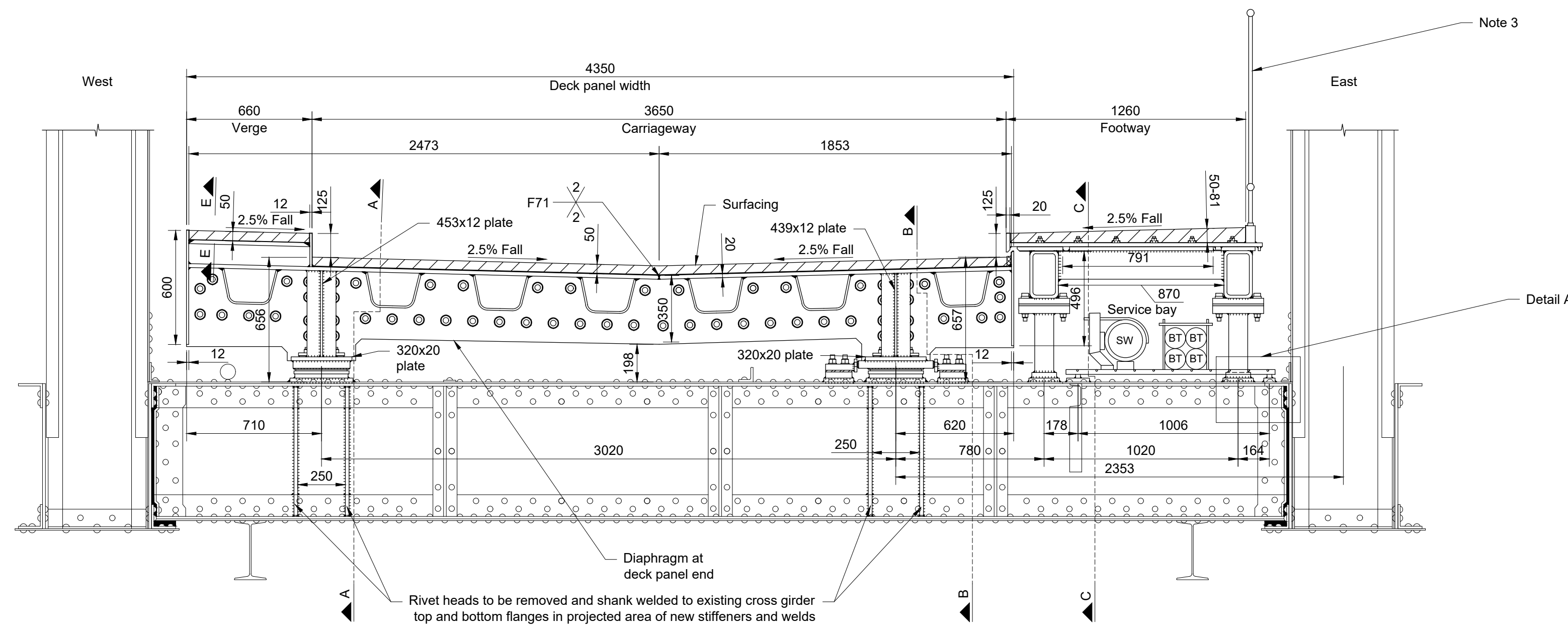


Notes:

- See Safety, Health and Environmental Information on Drawing No. 14/NW/1203/037/036.
- Gullies typically located at mid-span, refer to drawings no. 14/NW/1203/037/041, 14/NW/1203/037/043 and 14/NW/1203/037/046 for other locations.
- Pedestrian guardrail to CD 377. Overall height of 1.10m above walking surface. Geometrical and technical requirements for design and manufacture to PD CEN TR 16949. Panel and mesh fill as per Figure E.2 in PD CEN TR 16949. Spaces and voids to match existing handrail. Expansion joints to be provided coincident with end and intermediate expansion joints of new deck.
- Hole positions of new spacer plates to be taken from site templates to clear existing rivet heads. In order that weld leg length is not reduced by clash with existing rivet heads, transverse dimension of new spacer plates may be increased to locate welds between existing rivet heads. Otherwise, existing rivet heads would be removed and shank welded to existing parent plate.
- Optional, assuming poor condition of existing floor plate and/or transverse stiffeners. If they are in good condition, they may be kept and no new grid flooring would be installed. TBC on site.
- Vertical waterproof polyurethane elastic sealant with movement capacity not less than  $\pm 35\%$ . 20mm (joint width) x 12mm (edge plate thickness). Sikaflex PRO-3 or similar approved by BEAR Scotland. Vertical temporary/permanent waterproof closed cell polyethylene foam backing rod will be used as per manufacturer's requirements.
- Trafficable polyurethane elastic sealant. ARCON Arbothane 1245 or similar approved by BEAR Scotland, to be applied as per manufacturer's instructions.
- GCPAT ZED S94 Steel Primer + Eliminator membrane + Tack Coat No. 2, or similar waterproofing system approved by BEAR Scotland. Mastic asphalt binder course + mastic asphalt wearing course, 50mm overall thickness of waterproofing and surfacing over verge, to be applied as per instructions from manufacturers.
- GCPAT SL Reinforcing Scrim or similar approved by BEAR Scotland, to be applied as per manufacturer's instructions.
- Waterproofing membrane with  $\pm 10\text{mm}$  horizontal movement capacity. Debonding tapes and adhesive to waterproofing lapping stripe will be as per instructions from waterproofing's manufacturer. It will cover verge deck plate width (636mm) and will be turned over inner and top faces of verge upstands.

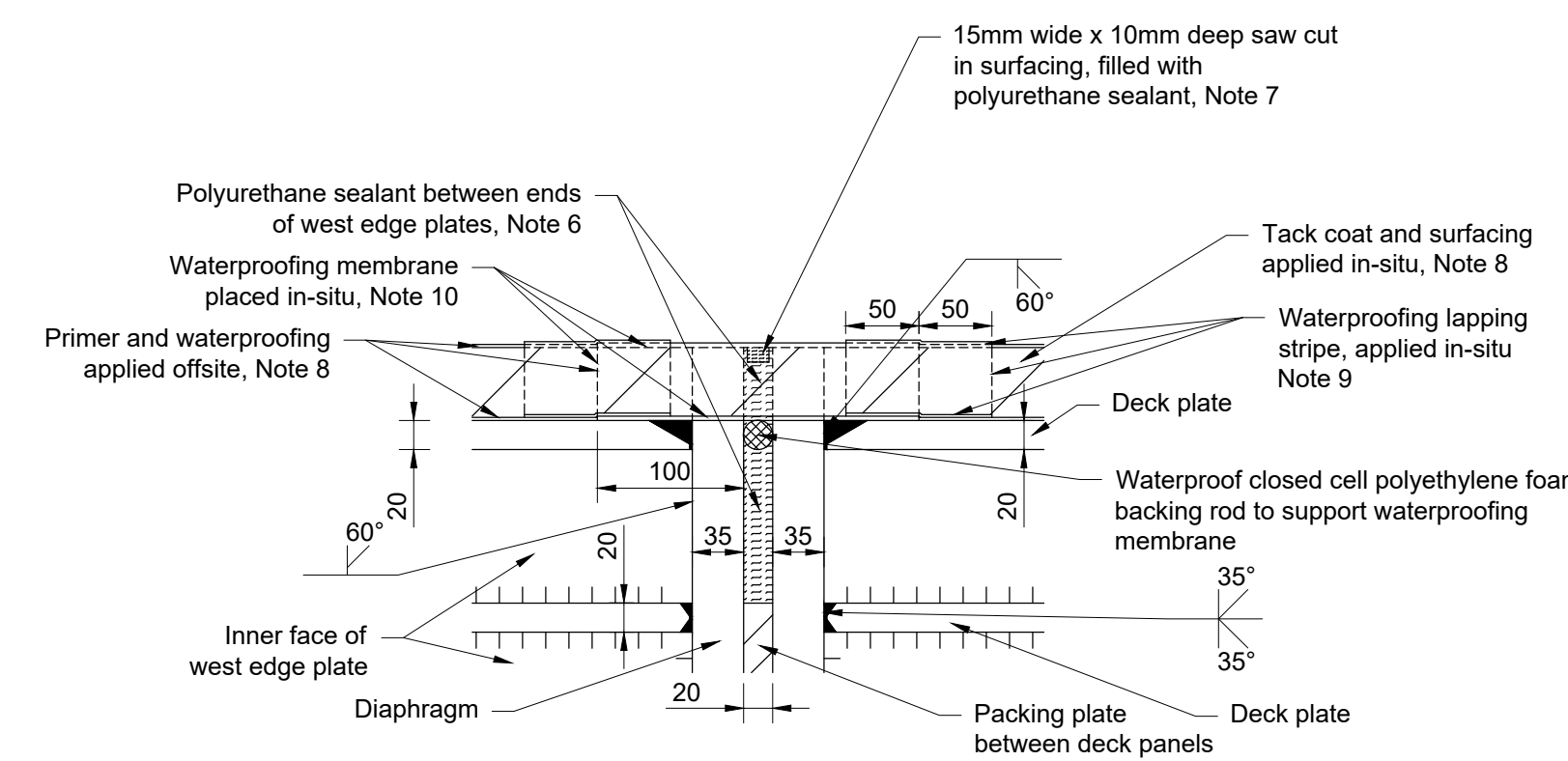


TYPICAL CROSS SECTION D-D

SCALE 1:20

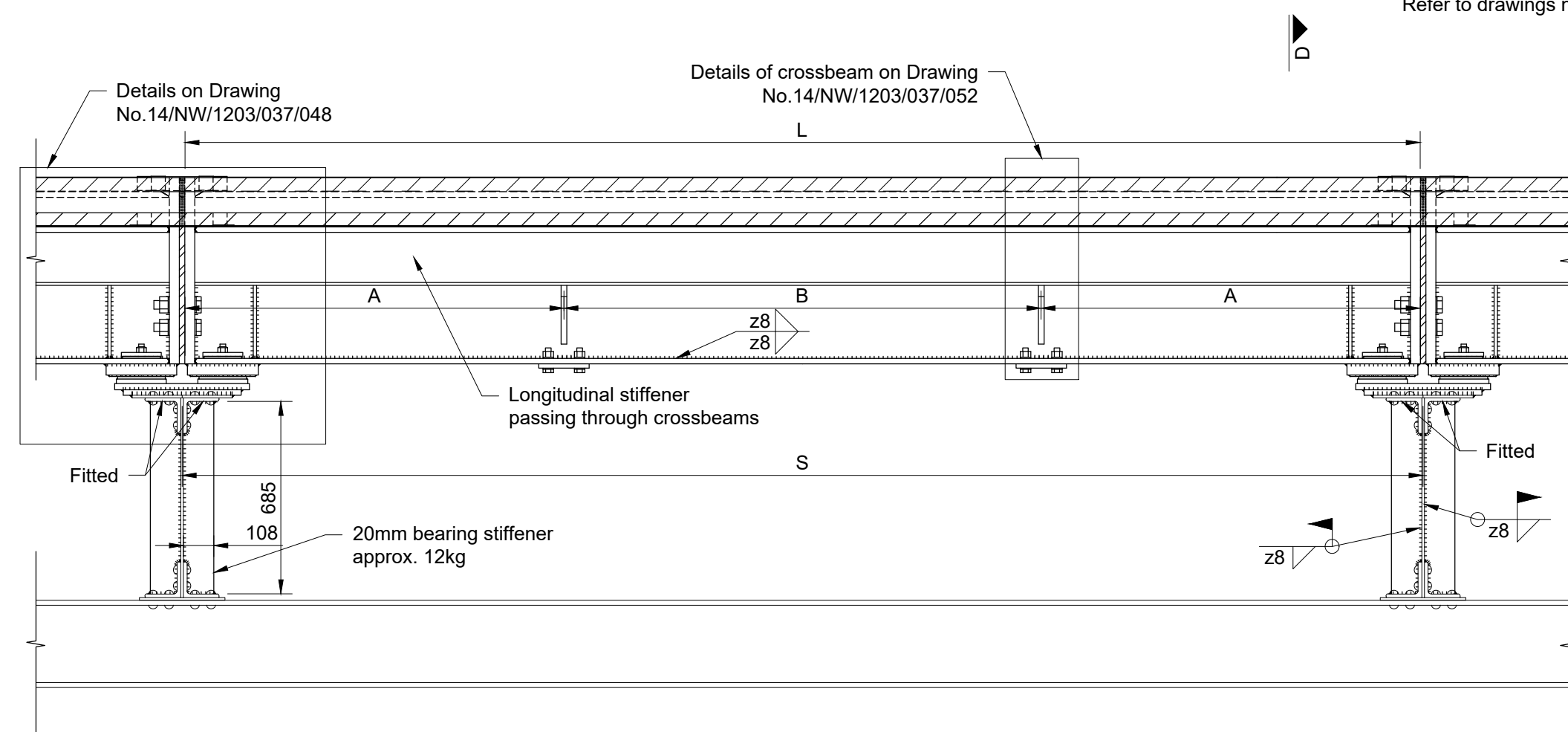
Panel mark	S	A	B	L
MSB to MSO	4420	1350	1700	4400
SCC, SCJ, SCK, SCL, SCM, NCM, NCL, NCK, NCJ, NCC	4864	1500	1844	4844
SCB, NCB	4655	1400	1835	4635
SCD, SCE, NCE, NCD	4191	1250	1671	4171
SCF, SCG, SCP, NCP, NCG, NCF	4458	1350	1738	4438
SCH, SCI, SCN, SCO, NCO, NCN, NCI, NCH	4737	1450	1817	4717

Panel marks are as noted on Drawing No. 14/NW/1203/037/041 Refer to drawings no. 14/NW/1203/037/043, 14/NW/1203/037/044 and 14/NW/1203/037/045 for panel marks adjacent to expansion joints



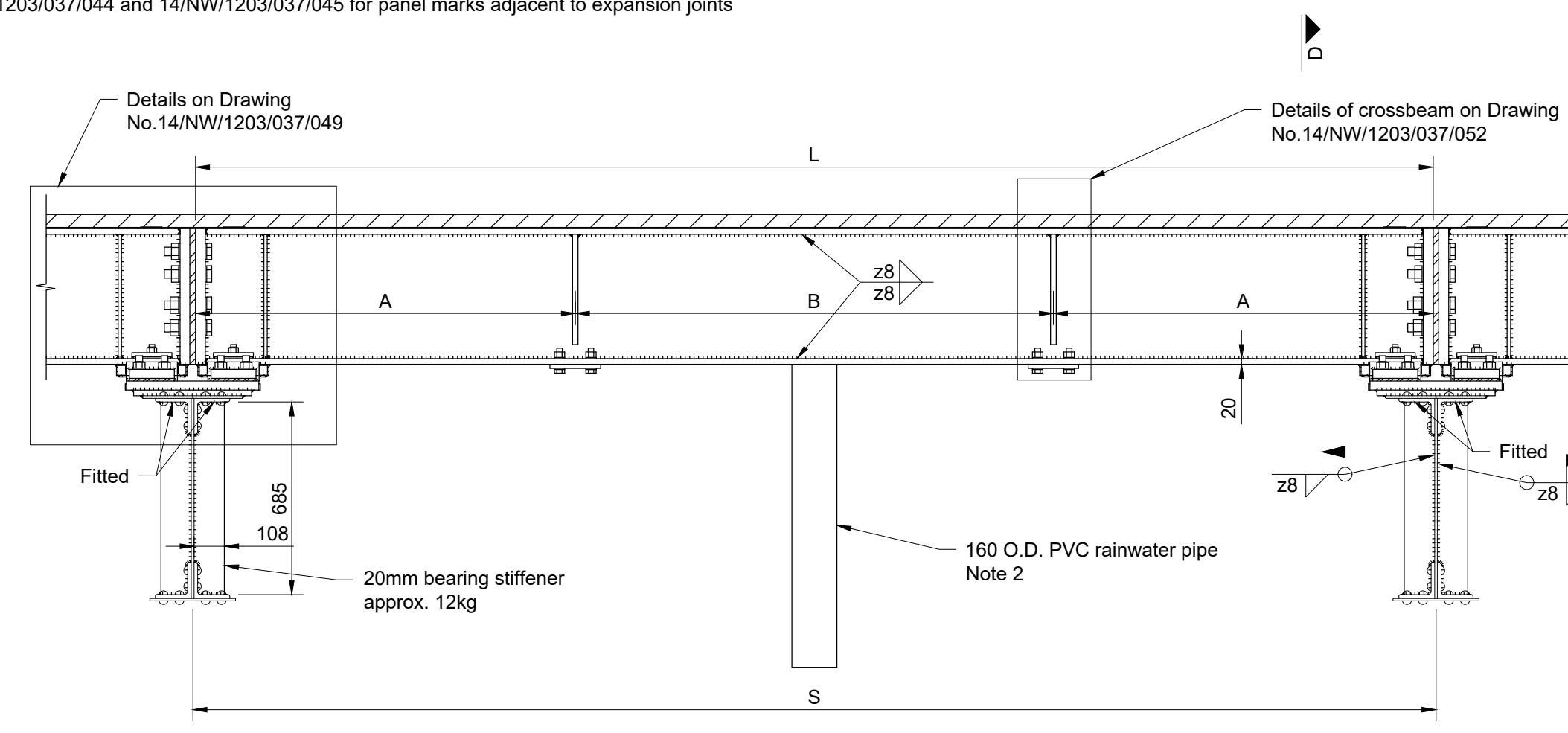
SECTION E-E

SCALE 1:5



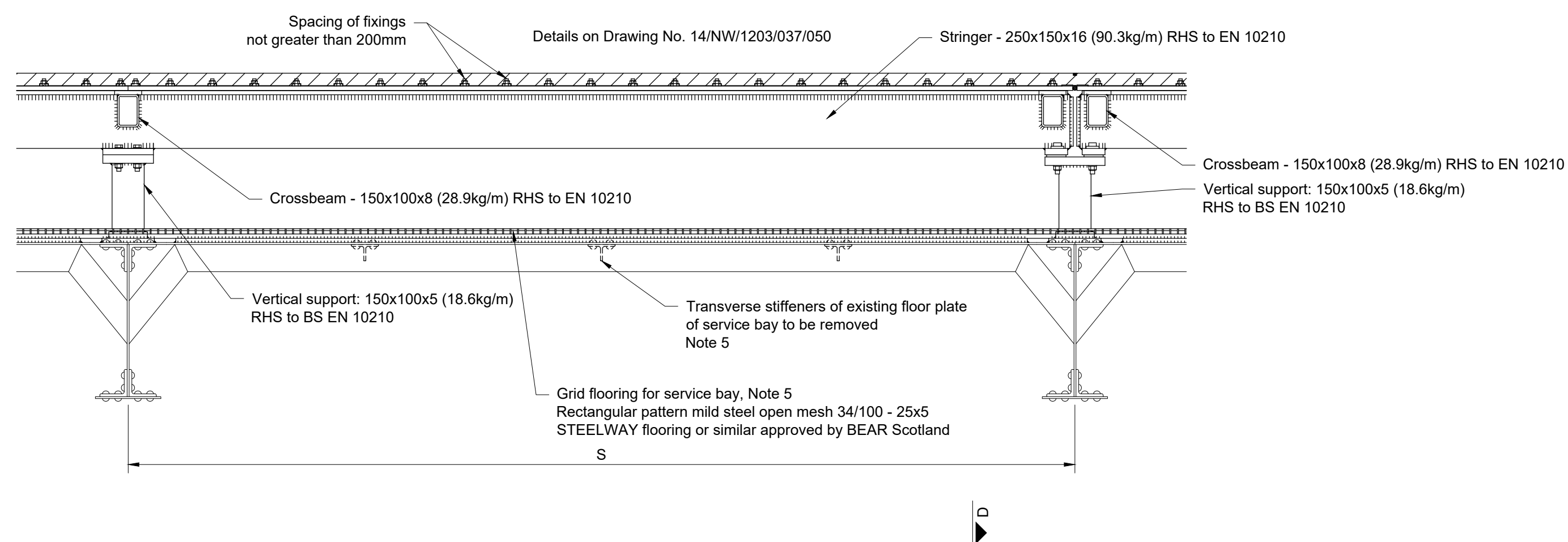
SECTION A-A

SCALE 1:20



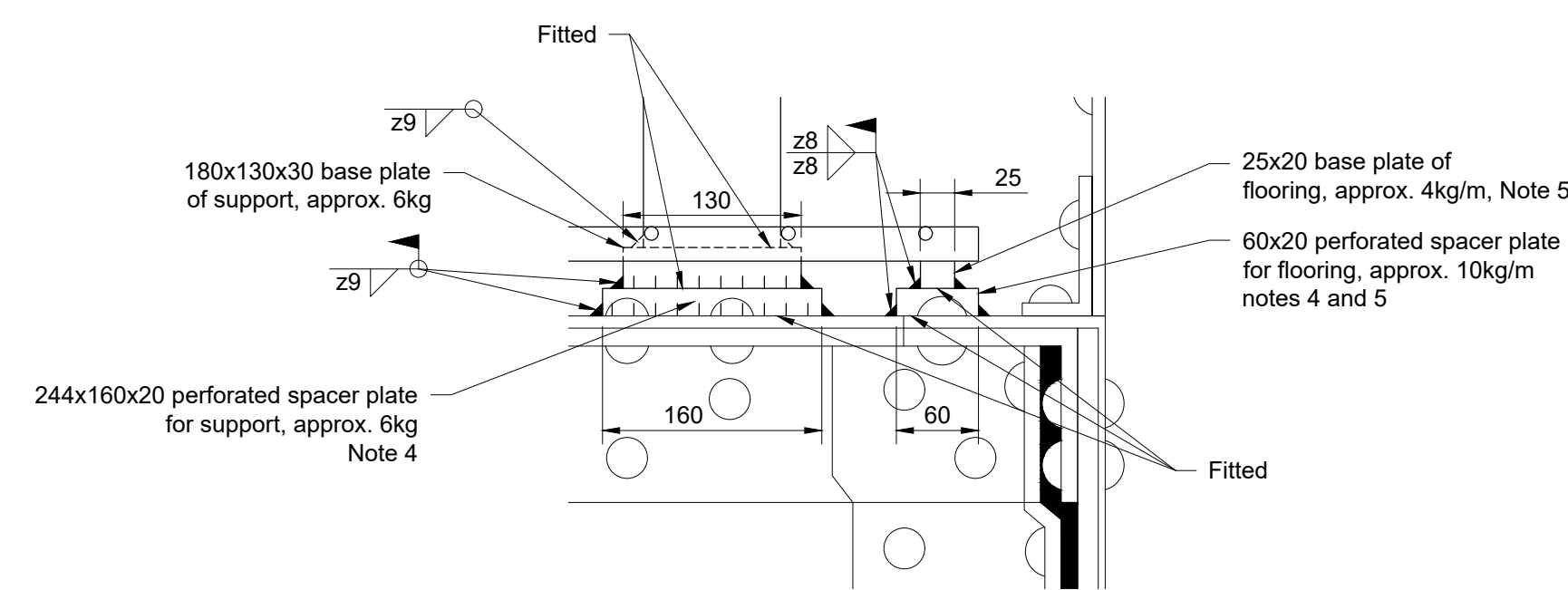
SECTION B-B

SCALE 1:20



SECTION C-C

SCALE 1:20



DETAIL A

SCALE 1:5

Do not scale this drawing

Rev	Date	Comments	Checked
2	09/04/21	Comments addressed	JL DFM
1	10/11/20	Comments addressed	JL DFM
0	16/06/20	Draft for Comments	JL DFM



Status: **DRAFT FOR COMMENTS**

Project: A828 Connel - Glencoe Trunk Road A828 10 CONNELL BRIDGE

Title: North West Major Structures Programme DECK REPLACEMENT NEW GENERAL ARRANGEMENT (2/2)

Drawing No.	14/NW/1203/037/042	0	1	2
Scale	As Shown @ A1	Date	16/06/2020	
	Drawn PM	Checked JL	Approved DFM	