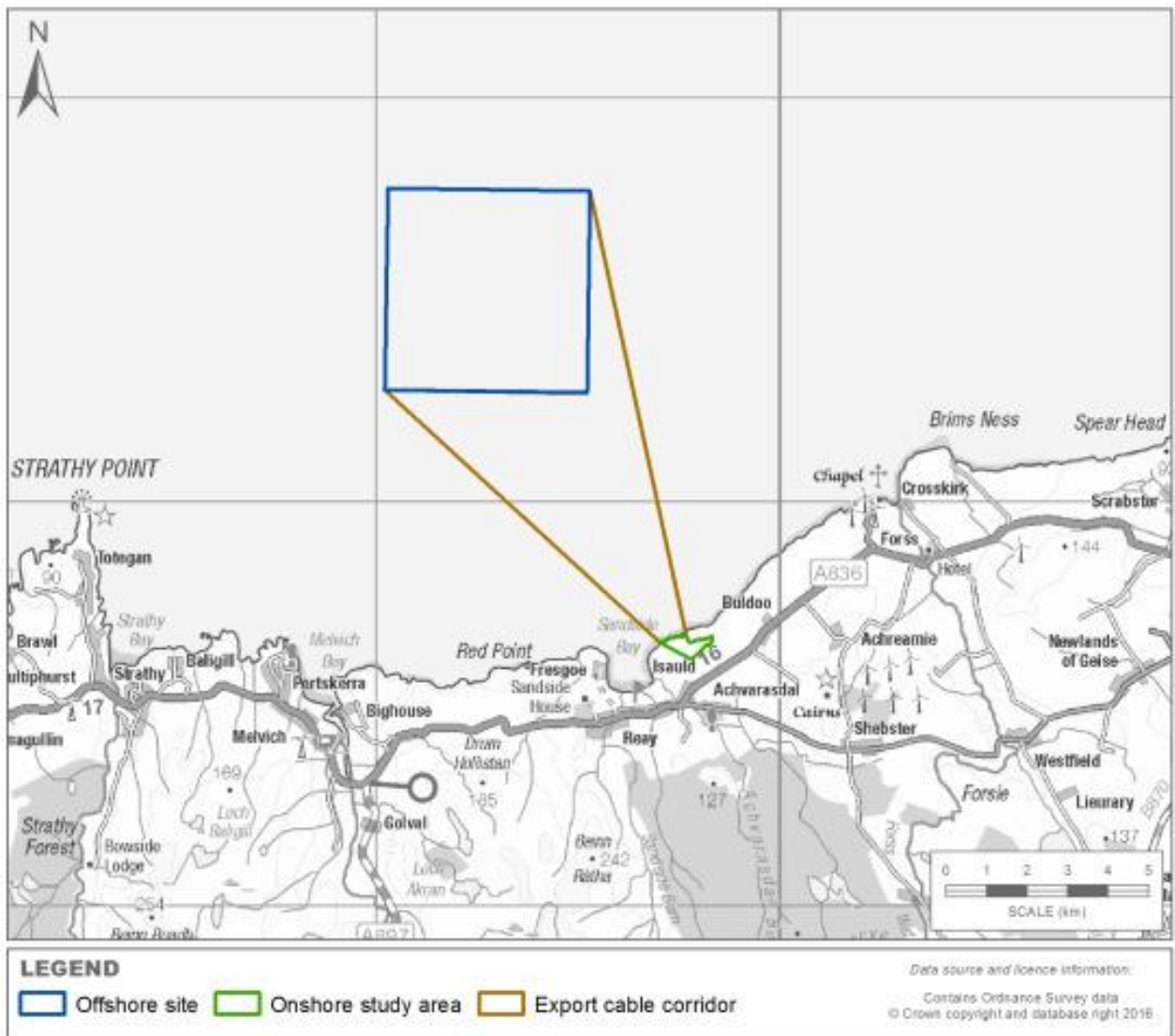


**Figure 1: Dounreay Trì Floating Wind Demonstration Project Onshore and Offshore Project Boundary.**



**Figure 2: Dounreay Tri Floating Wind Demonstration Project - Onshore Project Boundary, export cable corridor to shore, and onshore cable corridor option 1 and option 2**

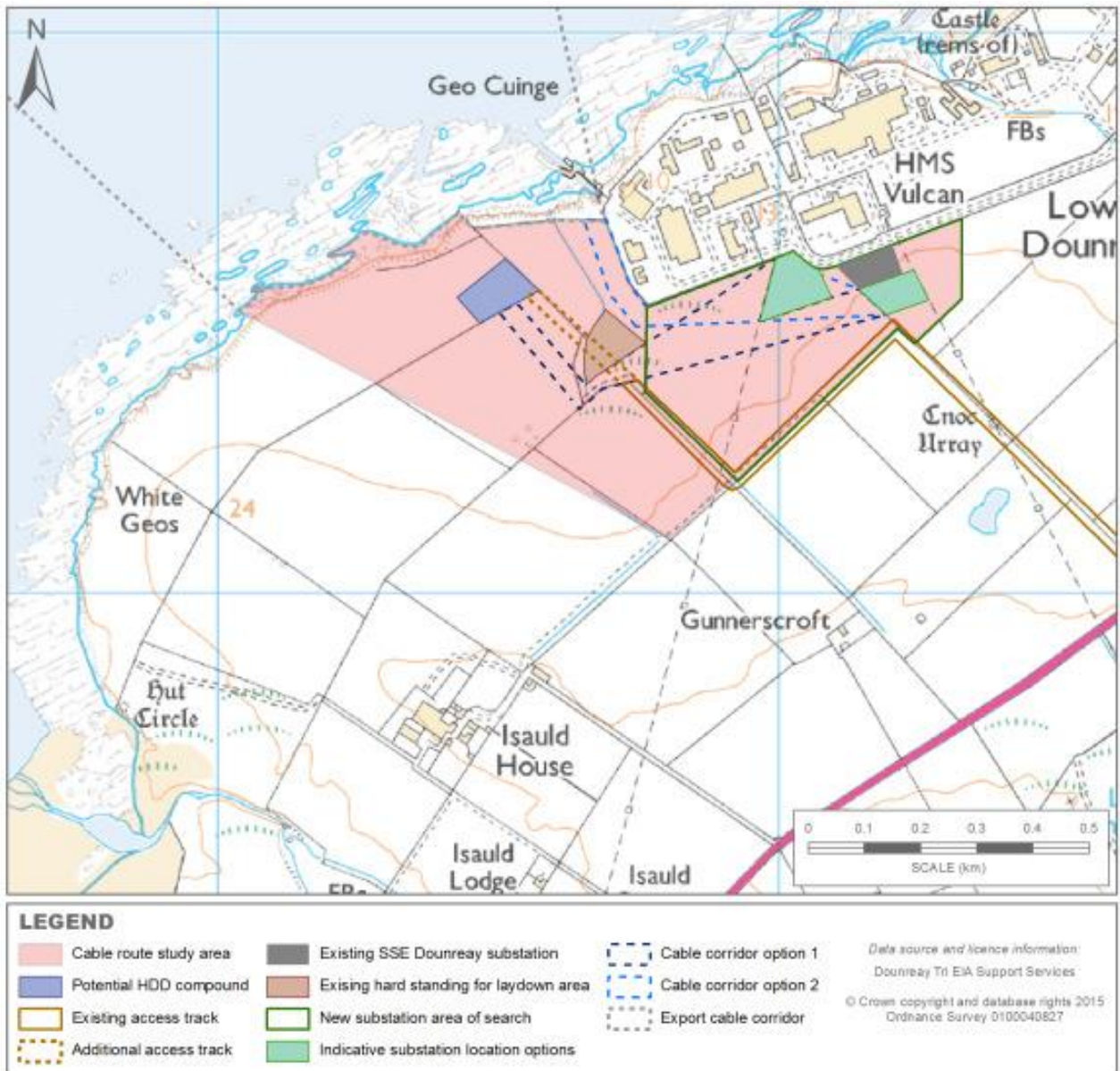
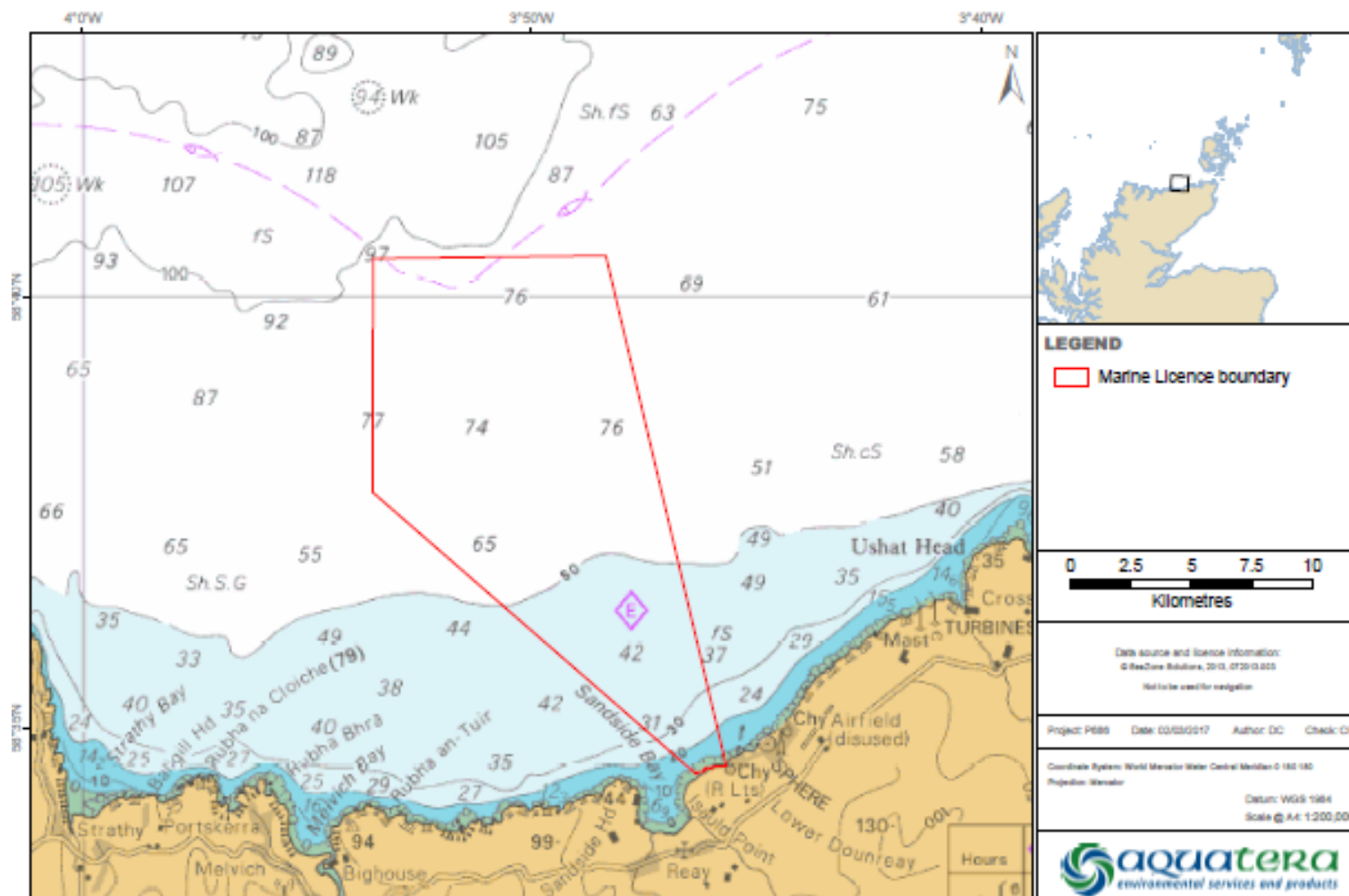


Figure 3: Dounreay Trì Floating Wind Demonstration Project Offshore export cable corridor



### Export Cable Corridor Coordinates

<b>Point</b>	<b>Latitude</b>	<b>Longitude</b>
<b>NW</b>	58°37'44.0	3°53'31.9
<b>NE</b>	58°40'27.7	3°48'24.7
<b>SE</b>	58°37'46.0	3°45'34.3
<b>SW</b>	58°34'28.9	3°46'14.2

### Offshore coordinates

<b>Point</b>	<b>Latitude</b>	<b>Longitude</b>
<b>NW</b>	58°40'25.6	3°53'36.0
<b>NE</b>	58°40'27.7	3°48'25.7
<b>SE</b>	58°37'46.0	3°48'22.0
<b>SW</b>	58°37'44.0	3°53'31.9