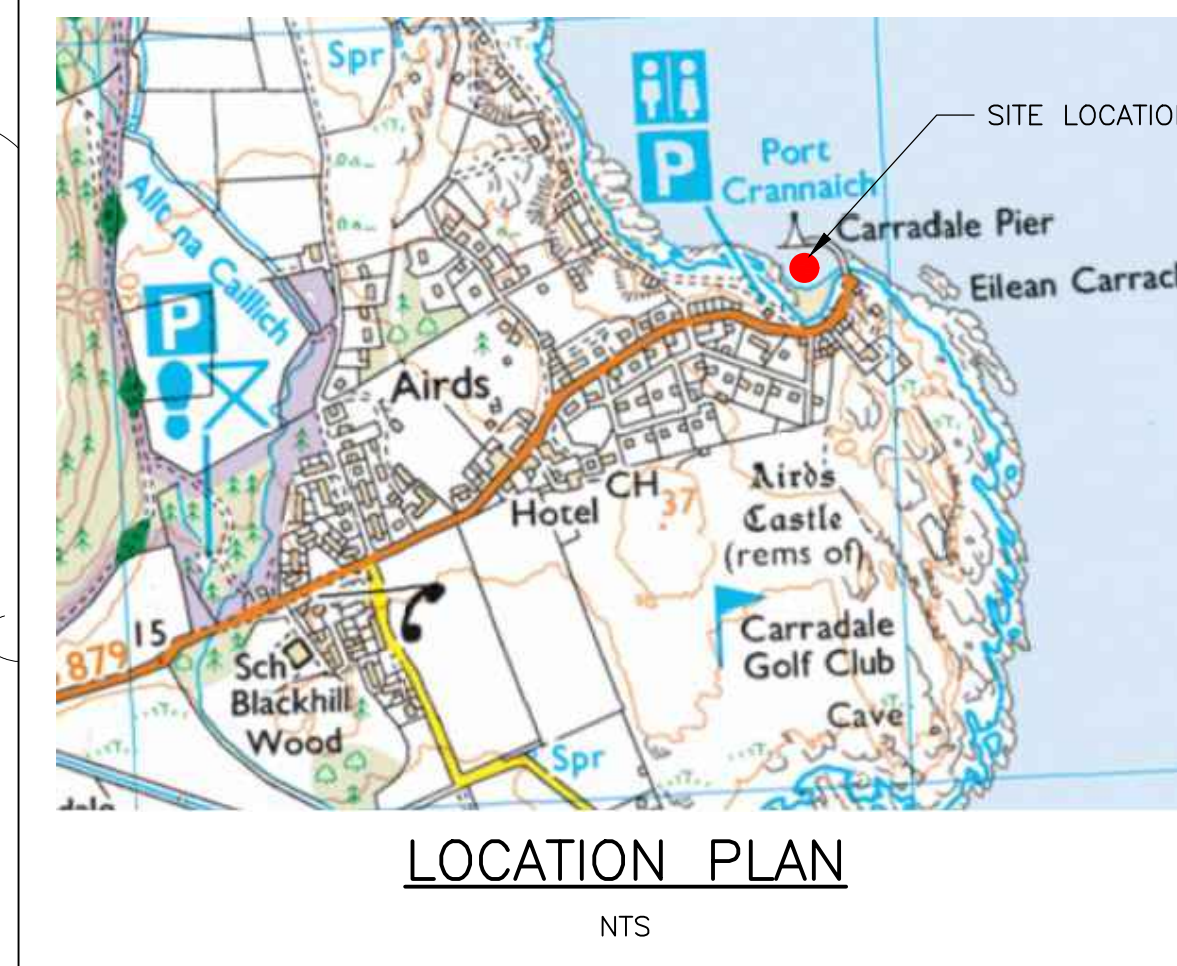
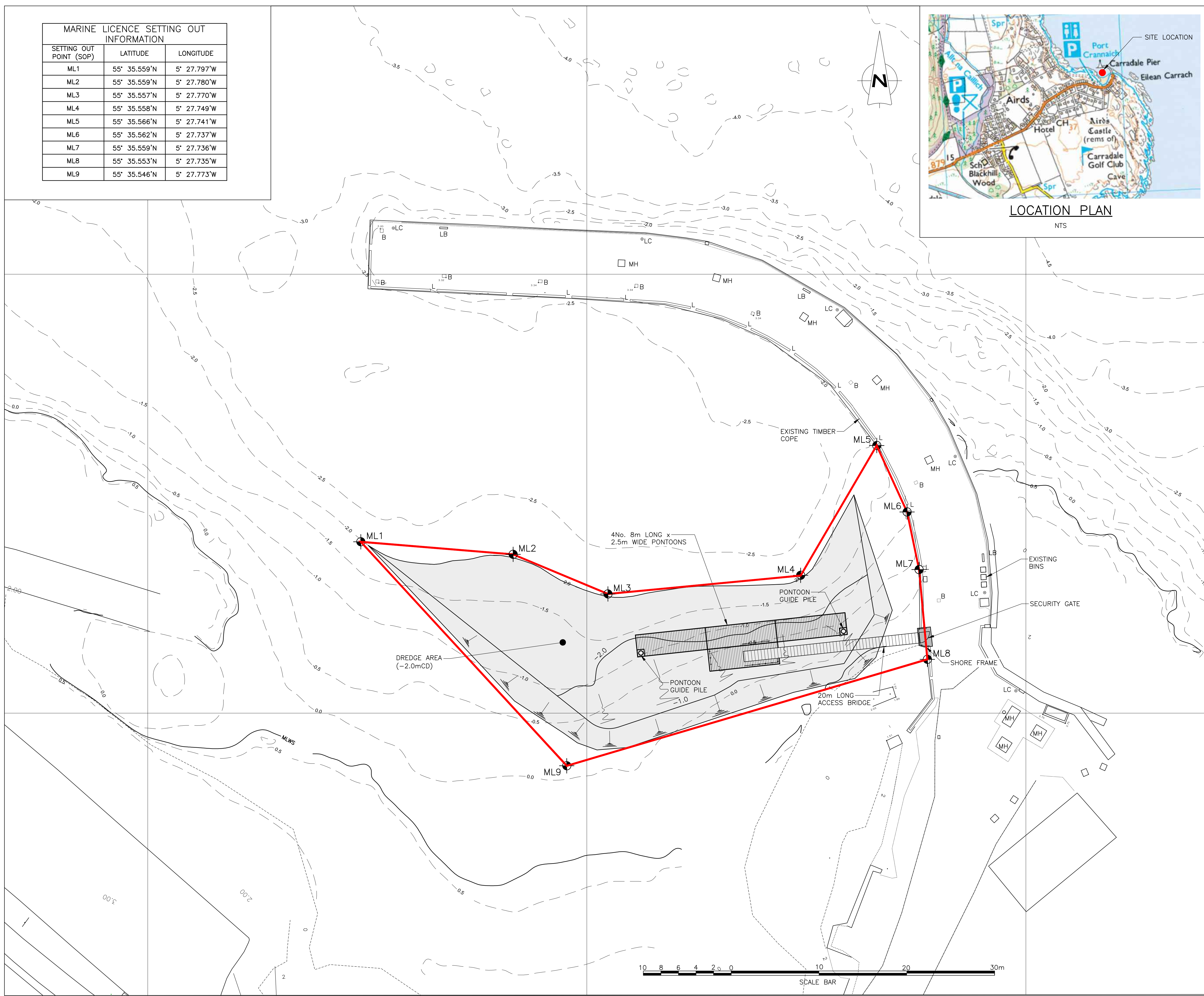


MARINE LICENCE SETTING OUT INFORMATION		
SETTING OUT POINT (SOP)	LATITUDE	LONGITUDE
ML1	55° 35.559'N	5° 27.797'W
ML2	55° 35.559'N	5° 27.780'W
ML3	55° 35.557'N	5° 27.770'W
ML4	55° 35.558'N	5° 27.749'W
ML5	55° 35.566'N	5° 27.741'W
ML6	55° 35.562'N	5° 27.737'W
ML7	55° 35.559'N	5° 27.736'W
ML8	55° 35.553'N	5° 27.735'W
ML9	55° 35.546'N	5° 27.773'W



- GENERAL NOTES
1. ALL LEVELS ARE IN METRES AND RELATE TO CHART DATUM.
  2. ALL DIMENSIONS ARE IN MILLIMETRES, UNLESS NOTED OTHERWISE.
  3. TIDE LEVELS ARE AS FOLLOWS  
 HAT +3.5mCD  
 MHWS +3.1mCD  
 MHWN +2.6mCD  
 MLWN +1.1mCD  
 MLWS +0.4mCD  
 LAT -0.2mCD
  4. CHART DATUM IS 1.62m BELOW ORDANCE DATUM.



- LEGEND
- B = BOLLARD
  - L = LADDER
  - LC = LIGHTING COLUMN
  - LB = LIFE BUOY
  - MH = MANHOLE
  - = MARINE LICENSE BOUNDARY
  - - - = BATHY CONTOURS (CD)

REV	DATE	DETAILS	DRAWN	CHK'D	APP'D

AMENDMENTS

CLIENT  
MOWI SCOTLAND LTD

PROJECT  
CARRADALE PONTON

**Wallace Stone**  
Consulting Civil Engineers

GLASGOW 0141 554 8233  
glasgow@wallacestone.co.uk

DINGWALL 01349 866775  
dingwall@wallacestone.co.uk

STORNOWAY 01851 600220  
stornoway@wallacestone.co.uk

DRAWING TITLE  
MARINE LICENCE APPLICATION  
PROPOSED SITE PLAN

DRAWN	CHECKED	APPROVED
AB	JA	GB
DATE	DATE	DATE
AUG 24	AUG 24	AUG 24
SCALE (A1)	STAGE	REV
1:200	CONSENTS	P01

DRAWING No.  
2239-WS-XX-XX-D-C-0054

