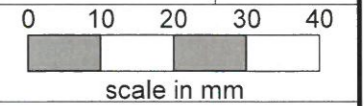


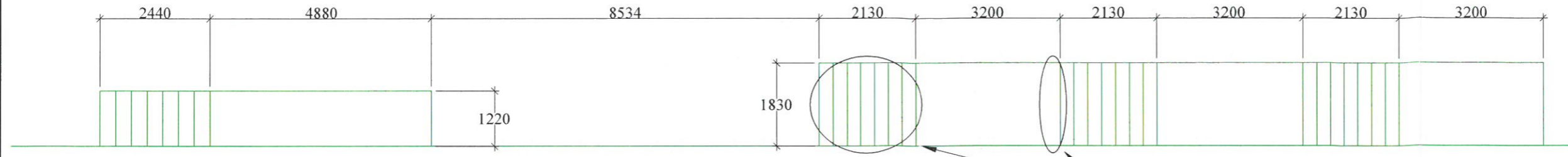
ALL DIMENSIONS NOMINAL

original drawing size

A3

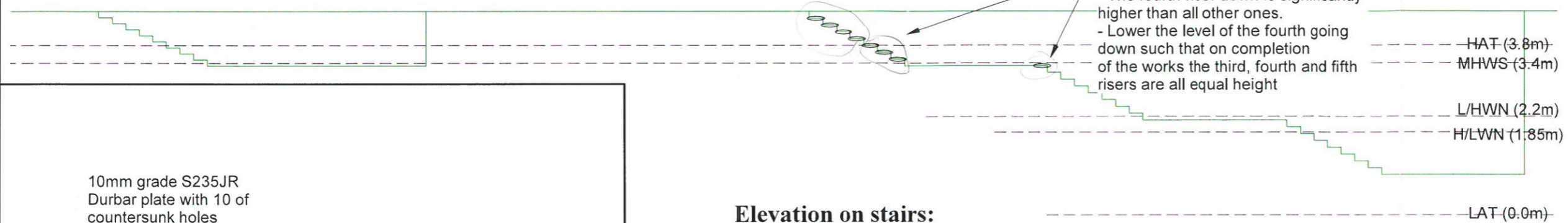


NOTES:
 - This drawing to be read in conjunction with all other Engineers drawings, notes, specifications and schedules.
 - Green lines represent the original concrete.



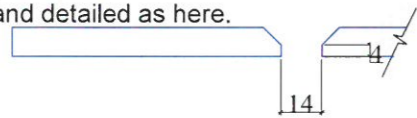
Plan view on stairs:

- Indicates location of new Durbar plate, total 8 of.
- The fourth riser down is significantly higher than all other ones.
- Lower the level of the fourth going down such that on completion of the works the third, fourth and fifth risers are all equal height



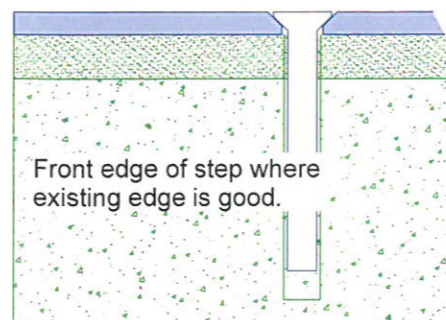
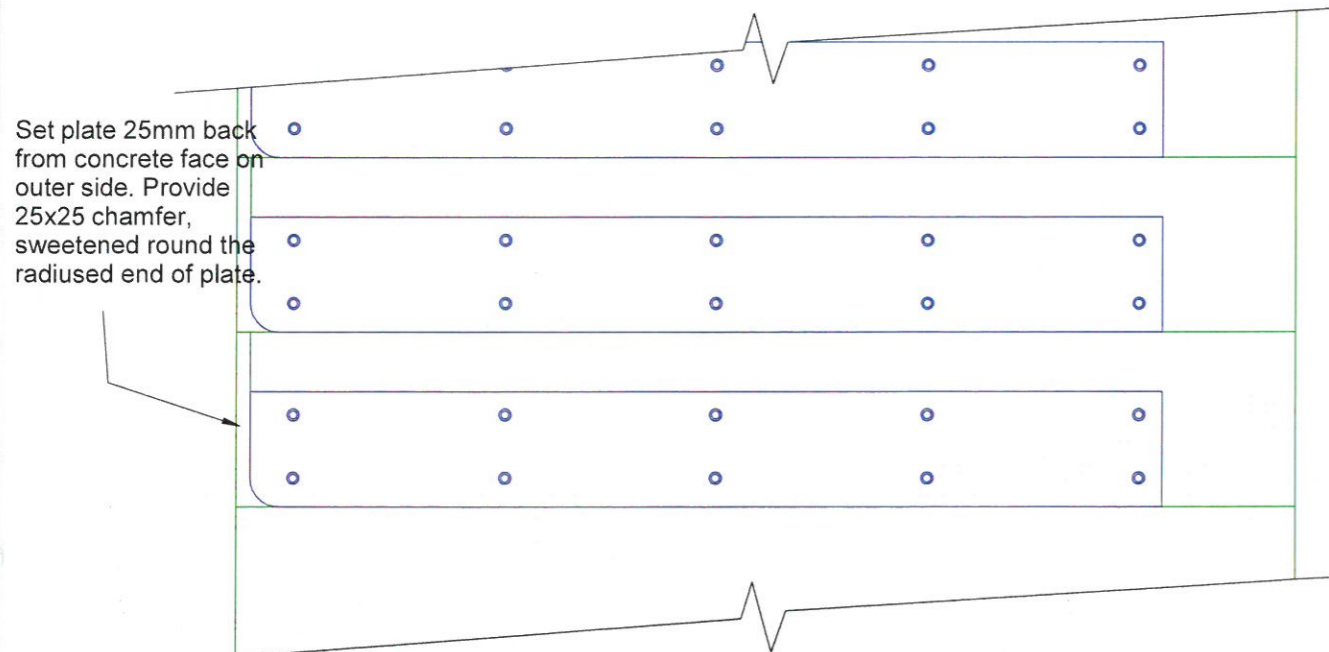
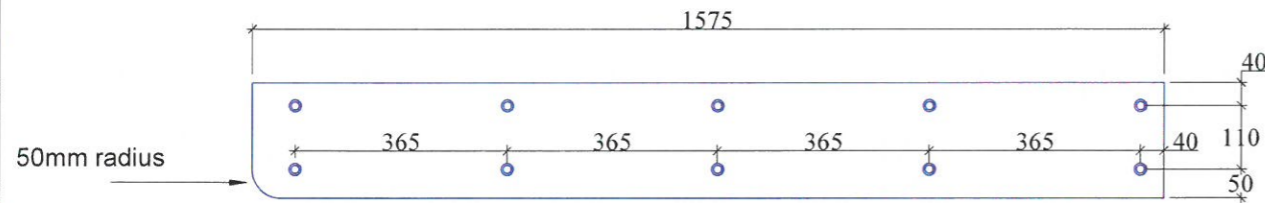
Elevation on stairs:

10mm grade S235JR Durbar plate with 10 of countersunk holes positioned as shown and detailed as here.

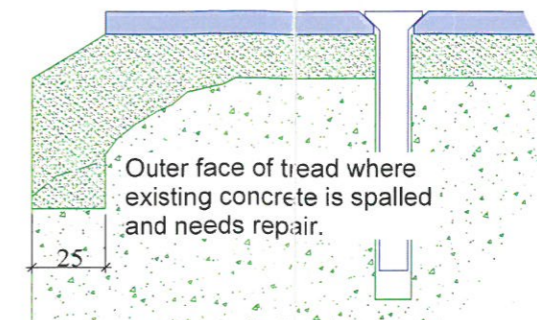


- Prepare existing steps by removing any poor or loose concrete to ensure min 10mm/max 25mm grout.
- Where the existing concrete has failed, on the vertical faces in such a way that the repair would lead to a feather edge, cut min 25mm square into the concrete and suitably prepare.
- Provide total 12 No. (4 spare) 10mm Durbar plate grade S235 as per details opposite and hot dipped galvanised after fabrication.
- Plate to be positioned 25mm in from outer vertical face and flush with riser vertical face.
- Level the plates end to end and front to back. Tolerances, end to end 3mm; front to back 2mm; dip in length of plate 1.5mm
- Fix plates down using Spit Tapcon Xtreme stainless steel CSK 10x90/35/5 fixings (provide additional 40 fixings for spare plates)
- Grout fill under plate - poured through a "letterbox" at the front of the step to drive any air out. Fill until grout level behind plate rises to level with plate, finish any gap between plate and vertical faces with a trowelled finish.

- Grout to be high flow rapid setting cementitious or epoxy grout min 50N/mm². To be proposed by the contractor for approval by the Engineer.
- Cut excess grout of front lip once it has reached strength to leave a square and flush finish.
- Ensure outer edge in finished square and flush.



Front edge of step where existing edge is good.



Outer face of tread where existing concrete is spalled and needs repair.

| | | | |
|-------------|---------|------|---|
| Drawing No. | 2098/13 | Rev. | C |
|-------------|---------|------|---|

| | |
|--|----------|
| Revisions | Date |
| B - steel flight stairs removed. Durbar plate details added. | July '19 |

John Peden Associates
 CONSULTING CIVIL & STRUCTURAL ENGINEERS

Askival, Glenmore Road, Oban, Argyll, PA34 4PG
 Tel 01631 570170

Client **National Trust for Scotland**

Project **St Kilda Pier**

Drawing Title **Stairs reference plans and details**

| | | | |
|-------------|---------|---------|----------|
| Drawn | AOA | Checked | JPA |
| Scale | 1:100 | Date | Feb 2019 |
| Drawing No. | 2098/13 | Rev | C |
| | | Draft | - |