

A photograph of an offshore wind farm at sunset. The sky is a mix of orange, yellow, and light blue. Several wind turbines are visible, their silhouettes against the bright sky. In the foreground, dark, choppy waves are breaking, with white foam and spray. The overall mood is serene and powerful.

Salamander Offshore Wind Farm

Offshore EIA Report

Volume ER.A.4, Annex 17.1: Setting Sieving Exercise



Powered by Ørsted and
Simply Blue Group



Salamander Offshore Wind Farm Offshore EIA Report

Volume ER.A.4, Annex 17.1: Setting
Sieving Exercise

PREPARED FOR

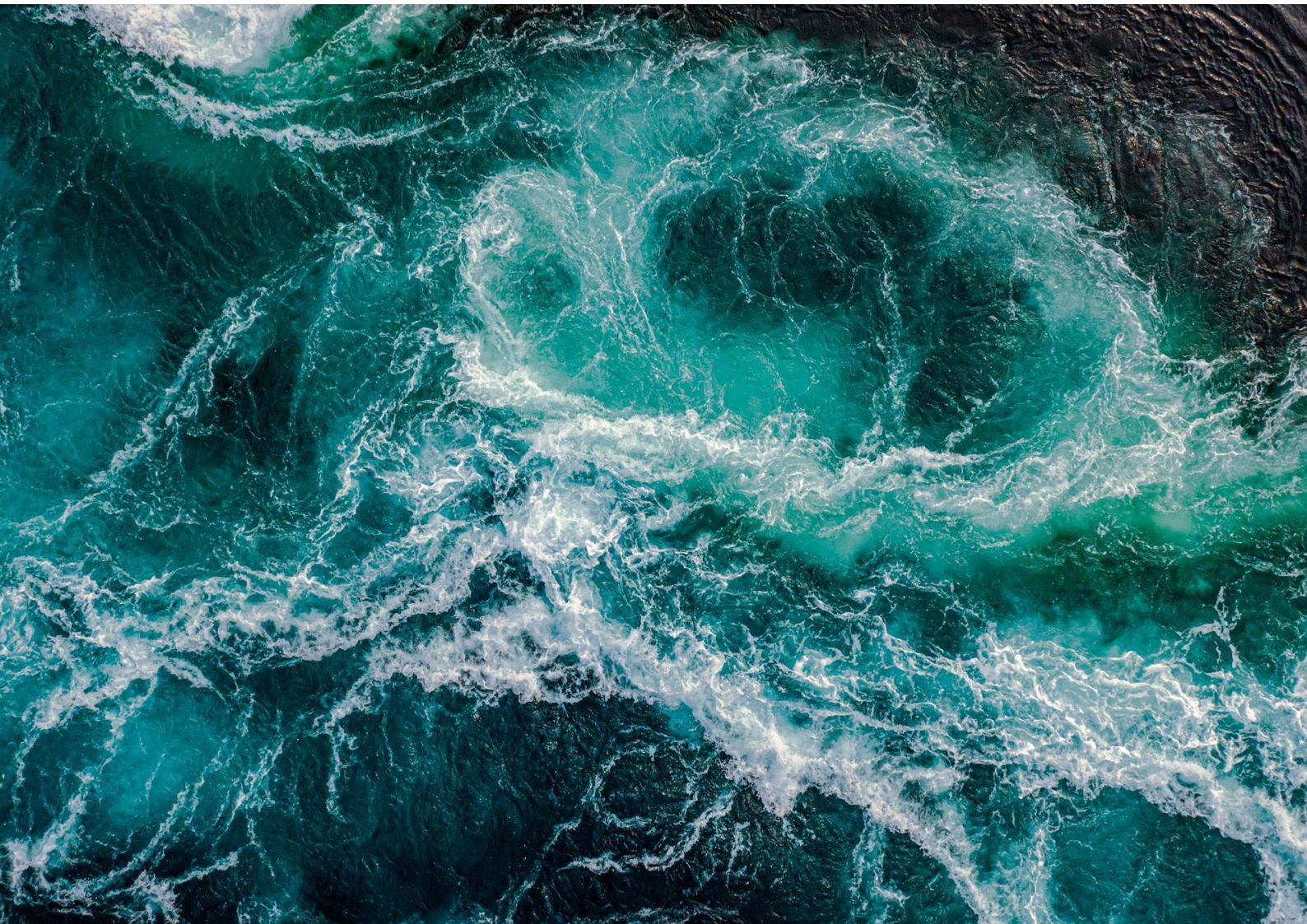
Salamander Wind Project Company
Ltd.

DATE

April 2024

REFERENCE

0689625



DOCUMENT DETAILS

The details entered below are automatically shown on the cover and the main page footer. PLEASE NOTE: This table must NOT be removed from this document.

DOCUMENT TITLE	Salamander Offshore Wind Farm Offshore EIA Report
DOCUMENT SUBTITLE	Volume ER.A.4, Annex 17.1: Setting Sieving Exercise
PROJECT NUMBER	0689625
Date	April 2024
Version	1.0
Author	Chris Swales, Sam Strutton
Client name	Salamander Wind Project Company Ltd. (SWPC)

DOCUMENT HISTORY

				ERM APPROVAL TO ISSUE		
VERSION	REVISION	AUTHOR	REVIEWED BY	NAME	DATE	COMMENTS
Draft 1	1.0	Christopher Swales	Ryan Maidment	Alex Hampson	16/02/2024	1st issue

DATA LICENCES

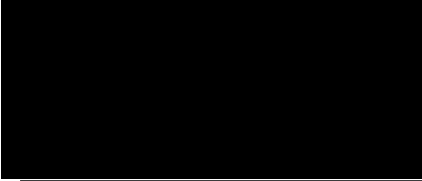
© Crown Copyright 2023. All rights reserved.

Charts NOT TO BE USED FOR NAVIGATION.

SIGNATURE PAGE

Salamander Offshore Wind Farm Offshore EIA Report

Volume ER.A.4, Annex 17.1: Setting Sieving Exercise
0689625



Ryan Maidment
Principal Consultant

ERM's London Office
2nd Floor Exchequer Court
33 St Mary Axe
London
United Kingdom
EC3A 8AA
T: +44 20 3206 5200

© Copyright 2024 by The ERM International Group Limited and/or its affiliates ('ERM'). All Rights Reserved.
No part of this work may be reproduced or transmitted in any form or by any means, without prior written permission of ERM.

CONTENTS

1.	OVERVIEW OF OFFSHORE ASPECTS	2
1.1	SCOPE OF THIS REPORT	2
1.2	THE OFFSHORE ARRAY	2
2.	METHODOLOGY	3
2.1	OVERALL APPROACH TO ASSESSING SETTING IMPACTS	3
2.1.1	Visibility of Offshore Array from land-based receptors	4
2.1.2	Study Area	4
2.1.3	Zones of Theoretical Visibility (ZTV)	6
2.1.4	Setting site visit	6
3.	OVERVIEW OF ASSETS	7
3.1	SUMMARY OF ASSETS CONSIDERED FOR ASSESSMENT	7
3.2	REFINEMENT FOLLOWING USE OF ZTV	7
3.3	REFINEMENT FOLLOWING SETTING SITE VISIT	51
4.	ASSETS TAKEN FORWARD TO ASSESSMENT	54

LIST OF FIGURES

FIGURE 2-1	SETTING STUDY AREA	5
------------	--------------------	---

LIST OF TABLES

TABLE 3.1:	LIST OF ASSETS CONSIDERED FOR SETTING ASSESSMENT AND RATIONALE FOR INCLUSION/EXCLUSION	9
TABLE 3.2:	LIST OF ASSETS REMOVED FROM CONSIDERATION FOLLOWING SETTING SITE VISIT	52
TABLE 4.1:	LIST OF ASSETS TAKEN FORWARD TO ASSESSMENT	55

1. OVERVIEW OF OFFSHORE ASPECTS

1.1 SCOPE OF THIS REPORT

This sieving exercise is a Technical Annex to **Volume ER.A.3, Chapter 17: Marine Archaeology and Cultural Heritage** of the Salamander Offshore Wind Farm Offshore EIA Report. This document details the methodology and assessment, through which the final list of heritage assets selected for the EIAR gazetteer and subsequent detailed assessment of setting impacts, was derived. The setting assessment associated with the Offshore Development of the Salamander Project is provided within **Volume ER.A.4, Annex 17.2: Setting Assessment**.

1.2 THE OFFSHORE ARRAY

This sieving exercise presents a summary of the appropriate design parameters required within this review of the Salamander Project. Full details of the Offshore Development Infrastructure are provided within **Volume ER.A.2, Chapter 4: Project Description**. Setting impacts are limited in scope to the permanent (in relation to the operational lifetime of the Salamander Project) above sea surface components of the offshore infrastructure, the Offshore Array (wind turbine generators (WTGs)), as detailed within **Volume ER.A.2, Chapter 4: Project Description** and summarised below.

The Offshore Array Area is approximately 35 km due east of Peterhead, at its closest. The Salamander Project may construct up to 7 WTGs (the Offshore Array). A range of WTG models will be considered, and the final model of WTG will be selected post-consent. The worst-case design scenario for the WTGs is shown in **Table 4-4** and **Figure 4-4** within **Volume ER.A.2, Chapter 4: Project Description** of the EIA Report which serves to define the parameters of the WTG envelope. This worse case design would mean a maximum blade tip height of 310 m with a blade diameter of 250 m.

Please note that the design of the Salamander Project has developed while this Annex (and the SLVIA Chapter, from which the setting review is associated) has been prepared and therefore the Project Design Envelope parameters presented above and in **Volume ER.A.2, Chapter 4: Project Description** are now smaller than those originally assessed in the settings assessment and presented in the associated figures and SLVIA photomontages. Therefore, effects presented are conservative and the final Salamander Project will not have effects worse than those presented here.

2. METHODOLOGY

A full summary of consultation undertaken with key stakeholders is provided within **Volume ER.A.3, Chapter 17: Marine Archaeology and Cultural Heritage** of the Salamander Offshore Wind Farm EIA Report.

Following consultation with Historic Environment Scotland (HES) and the Planning Archaeologist to Aberdeenshire Council (AC) (further detail is provided in **Volume ER.A.3, Chapter 17: Marine Archaeology and Cultural Heritage**), the methodology for assessing Setting impacts associated with the Offshore Array is set out below.

2.1 OVERALL APPROACH TO ASSESSING SETTING IMPACTS

The final decision on which assets included for assessment were based on feedback received from stakeholders as well as professional judgement, with heritage assets removed from consideration when it is demonstrated that they do not meet the following criteria:

- Firstly, the asset must lie within the Zones of Theoretical Visibility (ZTV);
- Secondly, the asset must have potential for views of the Offshore Array;
- Thirdly, the asset must derive part of its setting, and therefore cultural significance, from either a historic relationship to the offshore site or through views taking in the coastline and/or the distant seascape; and
- Fourth, an assets' setting, and therefore cultural significance, is partly derived from views towards the asset from offshore, i.e. from the Offshore Development Area looking onshore.

Setting is not simply the visual aspect of the asset in question. It is, rather, the surroundings of an asset that are relevant to the cultural significance of the asset. In general, there will be an appreciable historical relationship between the asset and its setting, either in terms of a physical relationship, or a more distant visual relationship. Some assets' cultural significance will relate to an aesthetic relationship with their surroundings which may result from design or be fortuitous.

In relation to the Offshore Array Area, an asset must derive part of its cultural significance from either a historic link to the Offshore Development Area, or more generally to/from coastal views. Given the distance from onshore assets, the relationship of an asset to coastal waters, the surrounding seascape and associated shipping lanes will be the chief consideration when assessing impacts to setting and subsequent effects to cultural significance.

It should also be noted that within the current setting there are already operational turbines present, both onshore and offshore from developments such as Hywind OWF, which all help to form the landscape baseline against which changes to setting are measured. As such, operational turbines, both onshore and offshore are included within discussions around setting impacts to the identified assets, where this is relevant, and are included within supporting visualisations.

2.1.1 VISIBILITY OF OFFSHORE ARRAY FROM LAND-BASED RECEPTORS

Scottish Natural Heritage (SNH, 2017)¹, on visual representation and impacts from windfarms, recommends that for WTG heights greater than 150 m (above waterline to blade tip) a Zone of Theoretical Visibility (ZTV) out to 45 km is used to assess visual impact.

Setting assessments will assume clear days with good visibility from coastal heritage assets out to the Offshore Array. Assets will not be sieved out based on the percentage of days annually with clear visibility to the Offshore Array.

2.1.2 STUDY AREA

An initial 45 km buffer on the Offshore Array Area forming the Settings Study Area was used to compile a list of designated heritage assets², which may be subject to a change in setting; **Figure 2-1**. Assets within 45 km were included in the assessment if they met the criteria set out in **Section 2.1**. Due consideration was also given to assets beyond 45 km that fall within the ZTV, and those that may suffer long-distance visual/seascape impacts, such as lighthouses situated prominently on elevated headlands.

¹ Scottish Natural Heritage. 2017. Visual representation of wind farms – Guidance. Available online at: <https://www.kintradwell-windfarm.co.uk/media/2641816/cd007009-visual-representation-of-wind-farms-v22-february-2017.pdf>.

² A designated heritage asset is the legal recognition of some of our most important historic sites and places and may include a monument, site, place, building, area or landscape identified as having a degree of significance, because of its heritage and cultural interest. The asset may be designated (nationally) under the relevant national legislation (listed buildings, scheduled monuments, registered historic gardens and landscapes and registered historic battlefields), or by UNESCO (world heritage sites) and locally under relevant legislation (such as conservation areas) to ensure that it is protected and that any change to our valued historic environment can be carefully managed in a way that preserves or further enhances them (HES, 2020; HE, 2021).

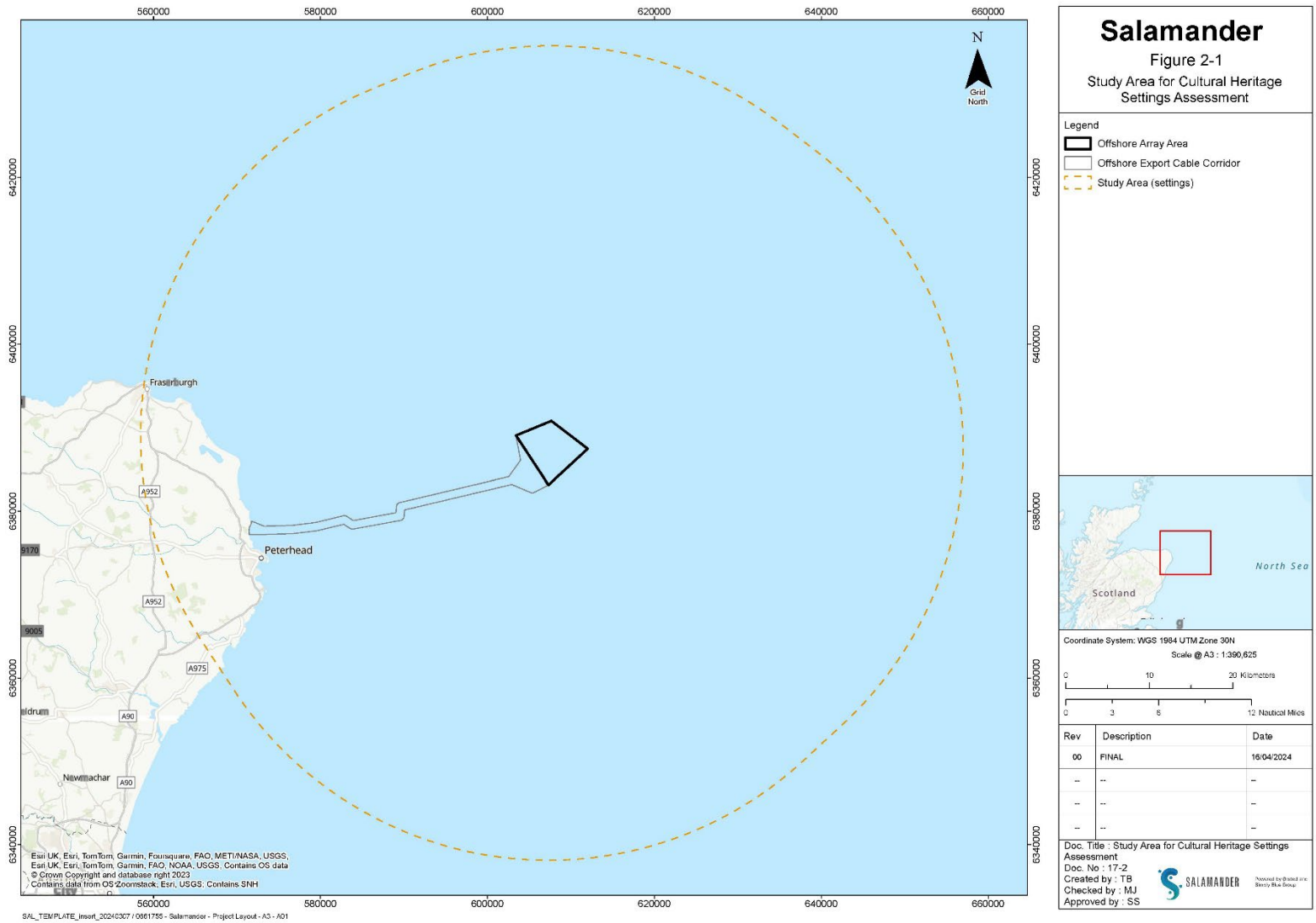


Figure 2-1 Setting Study Area



2.1.3 ZONES OF THEORETICAL VISIBILITY (ZTV)

A combination of a bare earth ZTV and a screened ZTV was used to identify heritage assets that may have visibility of the Offshore Array and may be subject to an adverse change in setting.

2.1.4 SETTING SITE VISIT

A setting site visit was undertaken in August 2023 to ground truth the bare earth and screened ZTV's and to help identify assets for inclusion/exclusion within the forthcoming assessment of setting impacts. All cultural heritage receptors identified for inclusion within the detailed Setting Assessment were visited by members of the ERM Cultural Heritage Team. In addition, key coastal settlements and their associated heritage assets were visited in order to ground truth the bare earth and screened ZTV and identify assets initially excluded which may need to be assessed further. Assets between Cruden Bay and Fraserburgh were visited. Photographs were captured along the length of the coastline and from heritage assets to support the Setting Assessment as required.

3. OVERVIEW OF ASSETS

3.1 SUMMARY OF ASSETS CONSIDERED FOR ASSESSMENT

The initial 45 km Study Area used for this assessment takes in a number of coastal settlements along the north-east coast of Scotland, inclusive of (moving north to south):

- Fraserburgh;
- Cairnbulg/Inverallochy;
- St Combs;
- Peterhead;
- Boddam; and
- Port Erroll/Crudan Bay.

All of these settlements contain designated heritage assets for which either the immediate coastline or the wider seascape makes some contribution to their setting and cultural significance.

In addition, this stretch of coastline is home to several 18th to 19th century lighthouses and coastal beacons for which setting and long-distance views are intrinsic to their value and function. Key lighthouses and beacons include those at:

- Kinnaird Head Lighthouse (Fraserburgh);
- Cairnbulg Point;
- Rattray Head Lighthouse;
- Peterhead Harbour; and
- Buchan Ness Lighthouse (Boddam).

A total of 448 designated assets are located within the 45 km Study Area. These include:

- 37 Scheduled Monuments (17 within 35 km, a further 11 between 35 and 40 km and a further 9 between 40 and 45 km from the Offshore Array);
- 2 Gardens and Designed Landscapes (located within 40 km of the Offshore Array);
- 401 Listed buildings of which 13 are Category A (181 within 35 km, a further 101 between 35 and 40 km and a further 119; and between 40 and 45 km from the Offshore Array);
- 8 Conservation Areas (3 located within 35 km, a further 2 located between 35 and 40 km and a further 3 located between 40 and 45 km from the Offshore Array).

3.2 REFINEMENT FOLLOWING USE OF ZTV

Of these 448 designated assets, 371 are located within the bare earth ZTV and were initially considered for assessment.

These 371 designated assets consisted of:

- 27 Scheduled Monuments;
- 1 Garden and Designed Landscape;
- 336 Listed buildings; and
- 7 Conservation Areas.

A detailed sieving exercise was undertaken for all 371 designated assets initially selected for assessment that fell within the bare earth ZTV. This sieving exercise considered the following:

- Was the asset within the screened ZTV as well as the bare earth ZTV;
- Did the setting site visit confirm the asset was screened;
- Was the setting of the asset reliant on a historic relationship to the offshore site or through long distance views taking in the coastline and/or the distant seascape; and
- Do views of the asset from sea contribute to setting of the asset.

A summary of this sieving exercise is provided within Table 3.1 below. The table provides a list of all assets and their associated asset reference, which equates to the HES unique identification number, within the bare earth ZTV along with a rationale for inclusion or exclusion within the forthcoming assessment of setting impacts. The bare earth and screened ZTV are provided as figures within **Volume ER.A.5, Annex 16.1: SLVIA Visualisations** and **Volume ER.A.5, Annex 17.1: Cultural Heritage Visualisation** of the Salamander Offshore Wind Farm Offshore EIA Report.

TABLE 3.1: LIST OF ASSETS CONSIDERED FOR SETTING ASSESSMENT AND RATIONALE FOR INCLUSION/EXCLUSION

Asset type	Asset ref	Listed Building Category	Asset name	Distance	Within Screened ZTV	Included for assessment	Rationale
Reviewed and included in assessment							
Scheduled Monument	SM11315	-	Ratray Line, pill box 80m E of Annachie Bridge	Within 35 km	Y	Y	Within the ZTV and coastal views integral to setting
Scheduled Monument	SM5622	-	St Fergus's Church, old parish church	Within 35 km	Y	Y	Within the ZTV and coastal views integral to setting
Scheduled Monument	SM11314	-	Ratray Line, pill box 960m NNW of Annachie Bridge	Within 35 km	Y	Y	Within the ZTV and coastal views integral to setting
Scheduled Monument	SM11320	-	Ratray Line, pill box 1550m SSE of Home Farm	Within 35 km	Y	Y	Within the ZTV and coastal views integral to setting
Scheduled Monument	SM11313	-	Ratray Line, pill box 1150m SSE of Home Farm	Within 35 km	Y	Y	Within the ZTV and coastal views integral to setting
Scheduled Monument	SM11316	-	Ratray Line, pill box 675m NE of Old Ratray	Within 35 km	Y	Y	Within the ZTV and coastal views integral to setting
Scheduled Monument	SM11317	-	Ratray Line, pill box 875m ENE of Old Ratray	Within 35 km	Y	Y	Within the ZTV and coastal views integral to setting
Scheduled Monument	SM11318	-	Ratray Line, pill box 460m WNW of Seatown	Within 35 km	Y	Y	Within the ZTV and coastal views integral to setting
Scheduled Monument	SM11319	-	Ratray Line, pill box at Seatown	Within 35 km	Y	Y	Within the ZTV and coastal views integral to setting
Scheduled Monument	SM11307	-	Ratray Line, pill box 55m SE of Ratray Head Shore Station	Within 35 km	Y	Y	Within the ZTV and coastal views integral to setting
Scheduled Monument	SM11308	-	Ratray Line, pill box 780m ENE of Middleton of Ratray	Within 35 km	Y	Y	Within the ZTV and coastal views integral to setting
Scheduled Monument	SM11311	-	Ratray Line, pill box 640m SE of Ratray House	Within 35 km	Y	Y	Within the ZTV and coastal views integral to setting
Scheduled Monument	SM3259	-	Castle Hill, motte SW of Hallmoss Farm	Within 40 km	Y	Y	Within the ZTV. Defensive site over River Ugie. River Ugie the coastal road key relationship for

Asset type	Asset ref	Listed Building Category	Asset name	Distance	Within Screened ZTV	Included for assessment	Rationale
							setting. However, coastal views have some significance.
Scheduled Monument	SM3252	-	Boddam Castle	Within 40 km	Y	Y	Within the ZTV and coastal views integral to setting
Scheduled Monument	SM11116	-	St Combs, St Columba's Church	Within 40 km	Y	Y	Within the ZTV. Coastal village and coastal views integral to setting.
Scheduled Monument	SM97	-	Inverallochy Castle	Within 40 km	Y	Y	Within the ZTV. Views towards coastal road integral to setting.
Scheduled Monument	SM90344	-	Wine Tower, tower	Within 45 km	Y	Y	Within the ZTV. Associated with Kinnaird Head Castle and as defensive site coastal views are integral to its setting.
Conservation Area	CA425	-	Peterhead Buchanhaven	Within 35 km	Y	Y	Within the ZTV and coastal views integral to setting
Conservation Area	CA426	-	Peterhead Roanheads	Within 35 km	Y	Y	Within the ZTV and coastal views integral to setting
Conservation Area	CA427	-	Peterhead Central	Within 35 km	Y	Y	Within the ZTV and coastal views integral to setting
Conservation Area	CA428	-	Boddam	Within 40 km	Y	Y	Within the ZTV and coastal views integral to setting
Conservation Area	CA414	-	Broadsea Fraserburgh	Within 45 km	Partial	Y	Within the ZTV and coastal views integral to setting
Conservation Area	CA663	-	Fraserburgh Town Centre	Within 45 km	Y	Y	Within the ZTV and coastal views integral to setting
Listed Building	LB16536	B	Old Churchyard of St Fergus	Within 35 km	Y	Y	Within the ZTV and coastal views integral to setting
Listed Building	LB3036	C	Middleton Of Rattray	Within 35 km	Y	Y	Within the ZTV and coastal views integral to setting
Listed Building	LB3038	B	Rattray House	Within 35 km	Y	Y	Within the ZTV and coastal views integral to setting
Listed Building	LB3039	B	Walled Garden, Rattray House	Within 35 km	Y	Y	Within the ZTV and coastal views integral to setting

Asset type	Asset ref	Listed Building Category	Asset name	Distance	Within Screened ZTV	Included for assessment	Rationale
Listed Building	LB3040	B	Ratray House Home Farm	Within 35 km	Y	Y	Within the ZTV and coastal views integral to setting
Listed Building	LB3041	C	Laundry, Ratray House	Within 35 km	Y	Y	Within the ZTV and coastal views integral to setting
Listed Building	LB3042	B	Ratray Head Lighthouse	Within 35 km	Y	Y	Within the ZTV and coastal views integral to setting
Listed Building	LB39737	C	Former Sale Rooms, 1, 3 Bridge Street, Peterhead	Within 35 km	Y	Y	Within core settlement of Peterhead with views overlooking the waterfront. Coastal views make significant contribution to setting.
Listed Building	LB39738	C	5, 7, 8 Bridge Street, Peterhead	Within 35 km	Y	Y	Within core settlement of Peterhead with views overlooking the waterfront. Coastal views make significant contribution to setting.
Listed Building	LB39739	B	Harbour Garage, 1 Harbour Street, Peterhead	Within 35 km	Y	Y	Within core settlement of Peterhead and situated on streets overlooking the coast. Views largely unobscured by surrounding settlement.
Listed Building	LB39828	C	6 North Street, Peterhead	Within 35 km	Y	Y	Within the ZTV in CA426 on coastal periphery of Peterhead closest to Offshore Development.
Listed Building	LB39829	C	8 North Street, Peterhead	Within 35 km	Y	Y	Within the ZTV in CA426 on coastal periphery of Peterhead closest to Offshore Development.
Listed Building	LB39830	C	10 North Street, Peterhead	Within 35 km	Y	Y	Within the ZTV in CA426 on coastal periphery of Peterhead closest to Offshore Development.
Listed Building	LB39831	C	20 North Street, 18, Peterhead	Within 35 km	Y	Y	Within the ZTV in CA426 on coastal periphery of Peterhead closest to Offshore Development.
Listed Building	LB39832	C	22, 24, 26 North Street, Peterhead	Within 35 km	Y	Y	Within the ZTV in CA426 on coastal periphery of Peterhead closest to Offshore Development.
Listed Building	LB39833	C	28 North Street, Peterhead	Within 35 km	Y	Y	Within the ZTV in CA426 on coastal periphery of Peterhead closest to Offshore Development.
Listed Building	LB39834	C	30 North Street, Peterhead	Within 35 km	Y	Y	Within the ZTV in CA426 on coastal periphery of Peterhead closest to Offshore Development.

Asset type	Asset ref	Listed Building Category	Asset name	Distance	Within Screened ZTV	Included for assessment	Rationale
Listed Building	LB39835	C	Rattray View, 46 North Street, Peterhead	Within 35 km	Y	Y	Within the ZTV in CA426 on coastal periphery of Peterhead closest to Offshore Development.
Listed Building	LB39836	C	Fairview Cottage, East North Street, Peterhead	Within 35 km	Y	Y	Within the ZTV in CA426 on coastal periphery of Peterhead closest to Offshore Development.
Listed Building	LB39837	C	1, 2, 3, 4, 5, 6, 7, 8, 9, 10 Great Stuart Street, Peterhead	Within 35 km	Y	Y	Within the ZTV in CA426 on coastal periphery of Peterhead closest to Offshore Development.
Listed Building	LB39838	C	4, 6, 10, 12, 14, 16, 18, 20, 22, 24, 25, 26, 27, 30, 32, 34 Port Henry Road, Peterhead	Within 35 km	Y	Y	Within the ZTV in CA426 on coastal periphery of Peterhead closest to Offshore Development.
Listed Building	LB39839	C	9, 11, 13, 15, 17, 19, 21, 23, 25, 27, 29, 31, 33, 35, 37, 39 Port Henry Road, Peterhead	Within 35 km	Y	Y	Within the ZTV in CA426 on coastal periphery of Peterhead closest to Offshore Development.
Listed Building	LB39840	C	1, 3, 5 Gladstone Road, Peterhead	Within 35 km	Y	Y	Within the ZTV in CA426 on coastal periphery of Peterhead closest to Offshore Development.
Listed Building	LB39841	C	7, 9, 11, 13, 15, 17, 19, 21, 23, 25, 27, 29, 31, 33, 35, 37 Gladstone Road, Peterhead	Within 35 km	Y	Y	Within the ZTV in CA426 on coastal periphery of Peterhead closest to Offshore Development.
Listed Building	LB39842	C	12, 14, 16, 18, 20, 22, 24, 26, 28, 30, 36, 38, 40, 42 Gladstone Road, Peterhead	Within 35 km	Y	Y	Within the ZTV in CA426 on coastal periphery of Peterhead closest to Offshore Development.
Listed Building	LB39843	C	1, 3, 5, 7, 9, 11, 13, 15, 17, Almanythie Road, Peterhead	Within 35 km	Y	Y	Within the ZTV in CA426 on coastal periphery of Peterhead closest to Offshore Development.
Listed Building	LB39844	C	2, 4, 6, 10, 12, 14, 16, 18 Almanythie Road, Peterhead	Within 35 km	Y	Y	Within the ZTV in CA426 on coastal periphery of Peterhead closest to Offshore Development.
Listed Building	LB39845	C	2, 4, 6, 10, 12, New Street, Peterhead	Within 35 km	Y	Y	Within the ZTV in CA426 on coastal periphery of Peterhead closest to Offshore Development.
Listed Building	LB39846	C	1, 3, 5, 7, 9, 11 New Street, Peterhead	Within 35 km	Y	Y	Within the ZTV in CA426 on coastal periphery of Peterhead closest to Development.
Listed Building	LB39847	B	The Fish House, Golf Road, Buchanhaven, Peterhead	Within 35 km	Y	Y	Within the ZTV and coastal views integral to setting

Asset type	Asset ref	Listed Building Category	Asset name	Distance	Within Screened ZTV	Included for assessment	Rationale
Listed Building	LB13889	B	12 Earls Court, Boddam	Within 40 km	Y	Y	Within the ZTV and coastal views integral to setting.
Listed Building	LB13890	C	Workshop And Garage, 1A Queen's Road, Boddam	Within 40 km	Y	Y	Within the ZTV and coastal views integral to setting.
Listed Building	LB16144	C	Parish Church, Inverallochy	Within 40 km	Y	Y	Within the ZTV and coastal views integral to setting.
Listed Building	LB16145	B	26 Shore Street, Inverallochy	Within 40 km	Y	Y	Within the ZTV and coastal views integral to setting.
Listed Building	LB16312	C	22 Queen's Road, Boddam	Within 40 km	Y	Y	Within the ZTV and coastal views integral to setting.
Listed Building	LB16313	C	Brethren Meeting House, 26 Gordon Street, Boddam	Within 40 km	Y	Y	Within the ZTV and coastal views integral to setting.
Listed Building	LB16314	C	Parish Church Of Boddam, Manse Terrace, Boddam	Within 40 km	Y	Y	Within the ZTV and coastal views integral to setting.
Listed Building	LB16335	C	22 Earl's Court, Boddam	Within 40 km	Y	Y	Within the ZTV and coastal views integral to setting.
Listed Building	LB16336	C	24 Earl's Court, Boddam	Within 40 km	Y	Y	Within the ZTV and coastal views integral to setting.
Listed Building	LB16337	B	Masonic Lodge No. 1087, 5, 7, 9 Rocksley Drive, Boddam	Within 40 km	Y	Y	Within the ZTV and coastal views integral to setting.
Listed Building	LB16338	C	11, 13 Rocksley Drive, Boddam	Within 40 km	Y	Y	Within the ZTV and coastal views integral to setting.
Listed Building	LB16339	C	15 Rocksley Drive, Boddam	Within 40 km	Y	Y	Within the ZTV and coastal views integral to setting.
Listed Building	LB16340	C	2 Rocksley Drive, Boddam	Within 40 km	Y	Y	Within the ZTV and coastal views integral to setting.
Listed Building	LB16341	C	6 Rocksley Drive, Boddam	Within 40 km	Y	Y	Within the ZTV and coastal views integral to setting.
Listed Building	LB16342	C	5 Harbour Street, Boddam	Within 40 km	Y	Y	Within the ZTV and coastal views integral to setting.

Asset type	Asset ref	Listed Building Category	Asset name	Distance	Within Screened ZTV	Included for assessment	Rationale
Listed Building	LB16343	C	7 Harbour Street, Boddam	Within 40 km	Y	Y	Within the ZTV and coastal views integral to setting.
Listed Building	LB16344	C	9 Harbour Street, Boddam	Within 40 km	Y	Y	Within the ZTV and coastal views integral to setting.
Listed Building	LB16345	C	Three Seats, Harbour Street, Boddam	Within 40 km	Y	Y	Within the ZTV and coastal views integral to setting.
Listed Building	LB16346	B	1 Queen's Road, Boddam	Within 40 km	Y	Y	Within the ZTV and coastal views integral to setting.
Listed Building	LB16347	C	3 Queen's Road, Boddam	Within 40 km	Y	Y	Within the ZTV and coastal views integral to setting.
Listed Building	LB16348	C	5 Queen's Road, Boddam	Within 40 km	Y	Y	Within the ZTV and coastal views integral to setting.
Listed Building	LB16349	C	7 Queen's Road, Boddam	Within 40 km	Y	Y	Within the ZTV and coastal views integral to setting.
Listed Building	LB16350	C	9 Queen's Road, Boddam	Within 40 km	Y	Y	Within the ZTV and coastal views integral to setting.
Listed Building	LB16351	C	11 Queen's Road, Boddam	Within 40 km	Y	Y	Within the ZTV and coastal views integral to setting.
Listed Building	LB16352	C	13 Queen's Road, Boddam	Within 40 km	Y	Y	Within the ZTV and coastal views integral to setting.
Listed Building	LB16353	C	15 Queen's Road, Boddam	Within 40 km	Y	Y	Within the ZTV and coastal views integral to setting.
Listed Building	LB16354	C	17 Queen's Road, Boddam	Within 40 km	Y	Y	Within the ZTV and coastal views integral to setting.
Listed Building	LB16355	C	2 Queen's Road, Boddam	Within 40 km	Y	Y	Within the ZTV and coastal views integral to setting.
Listed Building	LB16356	C	6 Queen's Road, Boddam	Within 40 km	Y	Y	Within the ZTV and coastal views integral to setting.
Listed Building	LB16357	C	8 Queen's Road, Boddam	Within 40 km	Y	Y	Within the ZTV and coastal views integral to setting.

Asset type	Asset ref	Listed Building Category	Asset name	Distance	Within Screened ZTV	Included for assessment	Rationale
Listed Building	LB16358	C	10, 12 Queen's Road, Boddam	Within 40 km	Y	Y	Within the ZTV and coastal views integral to setting.
Listed Building	LB16359	C	16 Queen's Road, Boddam	Within 40 km	Y	Y	Within the ZTV and coastal views integral to setting.
Listed Building	LB16360	C	20 Queen's Road, 18, Boddam	Within 40 km	Y	Y	Within the ZTV and coastal views integral to setting.
Listed Building	LB16362	B	Reform Tower, Meethill, Invernettie	Within 40 km	Y	Y	Within the ZTV and coastal views integral to setting.
Listed Building	LB16364	B	Sandford Lodge	Within 40 km	Y	Y	Within the ZTV and coastal views integral to setting.
Listed Building	LB16365	C	Walled Garden, Sandford Lodge	Within 40 km	Y	Y	Within the ZTV and coastal views integral to setting.
Listed Building	LB16366	B	Buchanness Cottage, Boddam	Within 40 km	Y	Y	Within the ZTV and coastal views integral to setting.
Listed Building	LB16367	A	Buchan Ness Lighthouse, Boddam	Within 40 km	Y	Y	Within the ZTV and coastal views integral to setting.
Listed Building	LB16368	C	1 Harbour Street, Boddam	Within 40 km	Y	Y	Within the ZTV and coastal views integral to setting.
Listed Building	LB16369	C	3, 4 Harbour Street, Boddam	Within 40 km	Y	Y	Within the ZTV and coastal views integral to setting.
Listed Building	LB16370	C	Retaining Wall, Harbour Street And Bridge Street, Boddam	Within 40 km	Y	Y	Within the ZTV and coastal views integral to setting.
Listed Building	LB16371	C	1 Bridge Street, Boddam	Within 40 km	Y	Y	Within the ZTV and coastal views integral to setting.
Listed Building	LB16372	C	3 Bridge Street, Boddam	Within 40 km	Y	Y	Within the ZTV and coastal views integral to setting.
Listed Building	LB16373	C	5 Bridge Street, Boddam	Within 40 km	Y	Y	Within the ZTV and coastal views integral to setting.
Listed Building	LB16374	C	7 Bridge Street, Boddam	Within 40 km	Y	Y	Within the ZTV and coastal views integral to setting.

Asset type	Asset ref	Listed Building Category	Asset name	Distance	Within Screened ZTV	Included for assessment	Rationale
Listed Building	LB16375	C	9 Bridge Street, Boddam	Within 40 km	Y	Y	Within the ZTV and coastal views integral to setting.
Listed Building	LB16376	C	11 Bridge Street, Boddam	Within 40 km	Y	Y	Within the ZTV and coastal views integral to setting.
Listed Building	LB16377	C	1 Earl's Court, Boddam	Within 40 km	Y	Y	Within the ZTV and coastal views integral to setting.
Listed Building	LB16378	C	5 Earl's Court, Boddam	Within 40 km	Y	Y	Within the ZTV and coastal views integral to setting.
Listed Building	LB16379	C	Outbuildings Between 7 And 9 Earl's Court, Boddam	Within 40 km	Y	Y	Within the ZTV and coastal views integral to setting.
Listed Building	LB16380	C	7 Earl's Court, Boddam	Within 40 km	Y	Y	Within the ZTV and coastal views integral to setting.
Listed Building	LB16382	C	11 Earl's Court, Boddam	Within 40 km	Y	Y	Within the ZTV and coastal views integral to setting.
Listed Building	LB16383	C	2, 4 Earl's Court, Boddam	Within 40 km	Y	Y	Within the ZTV and coastal views integral to setting.
Listed Building	LB16384	C	10 Earl's Court, 8, Boddam	Within 40 km	Y	Y	Within the ZTV and coastal views integral to setting.
Listed Building	LB16385	C	14 Earl's Court, Boddam	Within 40 km	Y	Y	Within the ZTV and coastal views integral to setting.
Listed Building	LB16386	C	16 Earl's Court, Boddam	Within 40 km	Y	Y	Within the ZTV and coastal views integral to setting.
Listed Building	LB16387	C	18 Earl's Court, Boddam	Within 40 km	Y	Y	Within the ZTV and coastal views integral to setting.
Listed Building	LB19779	C	1 Charles Street, Inverallochy	Within 40 km	Y	Y	Within the ZTV and coastal views integral to setting.
Listed Building	LB19794	C	1 Rocksley Drive, Boddam	Within 40 km	Y	Y	Within the ZTV and coastal views integral to setting.
Listed Building	LB19795	C	4 Rocksley Drive, Boddam	Within 40 km	Y	Y	Within the ZTV and coastal views integral to setting.

Asset type	Asset ref	Listed Building Category	Asset name	Distance	Within Screened ZTV	Included for assessment	Rationale
Listed Building	LB19796	C	4 Queen's Road, Boddam	Within 40 km	Y	Y	Within the ZTV and coastal views integral to setting
Listed Building	LB19797	C	14 Queen's Road, Boddam	Within 40 km	Y	Y	Within the ZTV and coastal views integral to setting
Listed Building	LB19798	C	3 Earl's Court, Boddam	Within 40 km	Y	Y	Within the ZTV and coastal views integral to setting
Listed Building	LB19799	C	Lunderton House	Within 40 km	Y	Y	Within the ZTV and coastal views integral to setting
Listed Building	LB3060	B	St James' Chapel, Chapel Hill, Cruden	Within 45 km	Y	Y	Within the ZTV and associated with coastal village of Cruden Bay
Listed Building	LB3061	C	The Old Rectory, Cruden	Within 45 km	Y	Y	Within the ZTV and associated with coastal village of Cruden Bay
Listed Building	LB3062	B	Erroll School House	Within 45 km	Y	Y	Within the ZTV and associated with coastal village of Cruden Bay
Listed Building	LB16392	B	Dales House, Peterhead	Within 40 km	Y	Y	Within the ZTV and coastal views integral to setting
Listed Building	LB3074	C	Hay Farm	Within 45 km	Y	Y	Within the ZTV. Coastal farm. Coastal views contribute to setting.
Listed Building	LB31865	B	Old Parish Church, Fraserburgh	Within 45 km	Y	Y	Within the ZTV and coastal views integral to setting
Listed Building	LB31866	B	Saltoun Mausoleum, Old Parish Church, Fraserburgh	Within 45 km	Y	Y	Within the ZTV and coastal views integral to setting
Listed Building	LB31867	A	Market Cross, Saltoun Square, Fraserburgh	Within 45 km	Y	Y	Within the ZTV and coastal views integral to setting
Listed Building	LB31868	B	Town House, 1, 3, Police Station, 3 Kirk Brae, Fraserburgh	Within 45 km	Y	Y	Within the ZTV and coastal views integral to setting
Listed Building	LB31869	B	14-16 Saltoun Square, Fraserburgh	Within 45 km	Y	Y	Within the ZTV and coastal views integral to setting
Listed Building	LB31870	B	Saltoun Arms Hotel, Saltoun Square, Fraserburgh	Within 45 km	Y	Y	Within the ZTV and coastal views integral to setting

Asset type	Asset ref	Listed Building Category	Asset name	Distance	Within Screened ZTV	Included for assessment	Rationale
Listed Building	LB31871	B	Clydesdale Bank, 34 Broad Street, Fraserburgh	Within 45 km	Y	Y	Within the ZTV and coastal views integral to setting
Listed Building	LB31872	B	50, 52, 54 Broad Street, Fraserburgh	Within 45 km	Y	Y	Within the ZTV and coastal views integral to setting
Listed Building	LB31873	A	Custom House, Broad Street, Fraserburgh	Within 45 km	Y	Y	Within the ZTV and coastal views integral to setting
Listed Building	LB31874	B	Britannic Assurance Company, 81, 83 Broad Street, Fraserburgh	Within 45 km	Y	Y	Within the ZTV and coastal views integral to setting
Listed Building	LB31875	B	7, 9 Commerce Street, Fraserburgh	Within 45 km	Y	Y	Within the ZTV and coastal views integral to setting
Listed Building	LB31876	B	3, 5 Commerce Street, Fraserburgh	Within 45 km	Y	Y	Within the ZTV and coastal views integral to setting
Listed Building	LB31877	B	Government Offices, 10 Commerce Street, Fraserburgh	Within 45 km	Y	Y	Within the ZTV and coastal views integral to setting
Listed Building	LB31878	B	South Parish Church, Seaforth Street, Fraserburgh	Within 45 km	Y	Y	Within the ZTV and coastal views integral to setting
Listed Building	LB31879	C	Harbour Works Office At Middle Jetty, Fraserburgh	Within 45 km	Y	Y	Within the ZTV and coastal views integral to setting
Listed Building	LB31880	B	World's End, 11 Dalrymple Street, Fraserburgh	Within 45 km	Y	Y	Within the ZTV and coastal views integral to setting
Listed Building	LB31881	C	Dalrymple Hall, 13, 15 Dalrymple Street, Fraserburgh	Within 45 km	Y	Y	Within the ZTV and coastal views integral to setting
Listed Building	LB31882	C	3 Duke Lane, Fraserburgh	Within 45 km	Y	Y	Within the ZTV and coastal views integral to setting
Listed Building	LB31883	C	3 And 1/2 Duke Lane, Fraserburgh	Within 45 km	Y	Y	Within the ZTV and coastal views integral to setting
Listed Building	LB31884	C	5 Duke Lane, Fraserburgh	Within 45 km	Y	Y	Within the ZTV and coastal views integral to setting
Listed Building	LB31885	C	7 Duke Lane, Fraserburgh	Within 45 km	Y	Y	Within the ZTV and coastal views integral to setting

Asset type	Asset ref	Listed Building Category	Asset name	Distance	Within Screened ZTV	Included for assessment	Rationale
Listed Building	LB31886	C	9 Duke Lane, Fraserburgh	Within 45 km	Y	Y	Within the ZTV and coastal views integral to setting
Listed Building	LB31887	C	2 Duke Lane, Fraserburgh	Within 45 km	Y	Y	Within the ZTV and coastal views integral to setting
Listed Building	LB31888	A	Former Kinnaird Head Lighthouse, Stevenson Road, Fraserburgh. Inclusive of Engine House, Assistant Keeper's Cottage, Head Keeper's Cottage, Boundary Walls and Fog Horn	Within 45 km	Y	Y	Within the ZTV and coastal views integral to setting
Listed Building	LB31890	C	89 High Street, Fraserburgh	Within 45 km	Y	Y	Within the ZTV and coastal views integral to setting
Listed Building	LB31891	B	Salvation Army Citadel, 66 Frithside Street, Fraserburgh	Within 45 km	Y	Y	Within the ZTV and coastal views integral to setting
Listed Building	LB31892	C	62 Frithside Street, Fraserburgh	Within 45 km	Y	Y	Within the ZTV and coastal views integral to setting
Listed Building	LB31893	C	41 Commerce Street, Fraserburgh	Within 45 km	Y	Y	Within the ZTV and coastal views integral to setting
Listed Building	LB31894	C	1, 3 Lodge Walk, Fraserburgh	Within 45 km	Y	Y	Within the ZTV and coastal views integral to setting
Listed Building	LB31895	C	Craigielea, 7 Saltoun Place, Fraserburgh	Within 45 km	Y	Y	Within the ZTV and coastal views integral to setting
Listed Building	LB31896	B	24, 26, 28, 30, 32 Saltoun Place, Fraserburgh	Within 45 km	Y	Y	Within the ZTV and coastal views integral to setting
Listed Building	LB31897	C	21-23 Saltoun Place, Fraserburgh	Within 45 km	Y	Y	Within the ZTV and coastal views integral to setting
Listed Building	LB31898	C	25 Saltoun Place, Fraserburgh	Within 45 km	Y	Y	Within the ZTV and coastal views integral to setting
Listed Building	LB31899	C	27, 29 Saltoun Place, Fraserburgh	Within 45 km	Y	Y	Within the ZTV and coastal views integral to setting

Asset type	Asset ref	Listed Building Category	Asset name	Distance	Within Screened ZTV	Included for assessment	Rationale
Listed Building	LB31900	C	31-33, 35 Saltoun Place, Fraserburgh	Within 45 km	Y	Y	Within the ZTV and coastal views integral to setting
Listed Building	LB31901	B	60, 62, 64, 66, 68, 70 Saltoun Place, Fraserburgh	Within 45 km	Y	Y	Within the ZTV and coastal views integral to setting
Listed Building	LB31902	B	War Memorial, Saltoun Place, Fraserburgh	Within 45 km	Y	Y	Within the ZTV and coastal views integral to setting
Listed Building	LB31903	B	St Peter's School, Victoria Street, Fraserburgh	Within 45 km	Y	Y	Within the ZTV and coastal views integral to setting
Listed Building	LB31904	B	St Peter's Rectory, 39 Victoria Street, Fraserburgh	Within 45 km	Y	Y	Within the ZTV and coastal views integral to setting
Listed Building	LB31905	B	St Peter's Episcopal Church, Charlotte Street, Fraserburgh	Within 45 km	Y	Y	Within the ZTV and coastal views integral to setting
Listed Building	LB31906	B	Central School, Charlotte Street, Fraserburgh	Within 45 km	Y	Y	Within the ZTV and coastal views integral to setting
Listed Building	LB31907	C	113 Charlotte Street, Fraserburgh	Within 45 km	Y	Y	Within the ZTV and coastal views integral to setting
Listed Building	LB31908	B	Windmill Stump, Fraserburgh	Within 45 km	Y	Y	Within the ZTV and coastal views integral to setting
Listed Building	LB31909	B	2, 4, 6, 8, 10, 12, 14, 16 College Bounds, Fraserburgh	Within 45 km	Y	Y	Within the ZTV and coastal views integral to setting
Listed Building	LB31968	C	2 Noble Street, Fraserburgh	Within 45 km	Y	Y	Within the ZTV and coastal views integral to setting
Listed Building	LB31969	C	3, 5 Broadsea Road, Fraserburgh	Within 45 km	Y	Y	Within the ZTV and coastal views integral to setting
Listed Building	LB31970	B	Fountain, Saltoun Place, Fraserburgh	Within 45 km	Y	Y	Within the ZTV and coastal views integral to setting
<i>Reviewed but not included in assessment</i>							
Scheduled Monument	SM5661	-	St Peter's Church, old parish church, Peterhead	Within 35 km	Y	N	Within the ZTV. However, assets key views are to the SE over Learwicks Point and Harbour.

Asset type	Asset ref	Listed Building Category	Asset name	Distance	Within Screened ZTV	Included for assessment	Rationale
							Development to NE with whole of Peterhead settlement between it and turbines.
Scheduled Monument	SM3303	-	Burgh of Rattray, St Mary's Chapel and Castle Hill, Old Rattray	Within 35 km	N	N	Whilst coastal views are integral to setting the asset sits outwith the ZTV
Scheduled Monument	SM11312	-	Rattray Line, pill box 855m SE of Rattray House	Within 35 km	N	N	Whilst coastal views are integral to setting the asset sits outwith the ZTV.
Scheduled Monument	SM11309	-	Rattray Line, pill box 650m E of Rattray House	Within 35 km	N	N	Whilst coastal views are integral to setting the asset sits outwith the ZTV.
Scheduled Monument	SM11310	-	Rattray Line, pill box 585m SE of Rattray House	Within 35 km	N	N	Whilst coastal views are integral to setting the asset sits outwith the ZTV.
Scheduled Monument	SM6137	-	Boddam Den, flint mining complex, Sandfordhill	Within 40 km	Partial	N	Only minimally within the ZTV. Coastal views not integral to setting and significant modern development between asset and Offshore Development
Scheduled Monument	SM3999	-	Mount Pleasant, enclosure	Within 40 km	Y	N	Within the ZTV but coastal views not integral to setting. River Urgie key contributor to setting.
Scheduled Monument	SM35	-	Netherton, standing stones & stone circle	Within 40 km	Y	N	Within the ZTV but coastal views not integral to setting.
Scheduled Monument	SM2496	-	Ravenscraig Castle	Within 40 km	Partial	N	Within the ZTV coastal views not integral to setting. River Urgie key contributor to setting.
Scheduled Monument	SM11119	-	Crimond old parish church, 240m NW of Kirkton Croft	Within 40 km	Y	N	Within the ZTV but coastal views not integral to setting.
Scheduled Monument	SM4331	-	Loch of Strathbeg, windmill W of	Within 40 km	N	N	Outwith the ZTV and coastal views not integral to setting
Scheduled Monument	SM98	-	Inverugie Castle	Within 40 km	Y	N	Within the ZTV but heavily screened by trees. Coastal views not integral to setting. River Urgie key contributor to setting.
Scheduled Monument	SM3251	-	Corbie Knap, cairn	Within 45 km	Y	N	Within the ZTV but setting linked to valley to west and not coastal views to east.
Scheduled Monument	SM3276	-	Cairn Catto, long cairn	Within 45 km	N	N	Outwith the ZTV and setting linked to valley to west and not coastal views to east.

Asset type	Asset ref	Listed Building Category	Asset name	Distance	Within Screened ZTV	Included for assessment	Rationale
Scheduled Monument	SM8220	-	Fraserburgh Cemetery, pill box 280m ENE of Kirkton Cottages	Within 45 km	N	N	Outwith the ZTV. Whilst coastal views are integral to setting, the key views are north to Fraserborough coast and not east to Offshore Development.
Scheduled Monument	SM8	-	Berrybrae, stone circle 470m NNE of	Within 45 km	Y	N	Within the ZTV but coastal views not integral to setting.
Scheduled Monument	SM11138	-	Knockmonean Cairn	Within 45 km	Y	N	Within the ZTV but views to the north over the Water of Philarth and the coast key, and not coastal views east to the Offshore Development.
Scheduled Monument	SM11141	-	Trefor Hill, motte. Views over northern road to Fraserborough key to setting.	Within 45 km	N	N	Outwith ZTV and coastal views not integral to setting. Views over north road to Fraserborough integral to setting.
Scheduled Monument	SM13679	-	Easterton of Lenabo, airship station 750m ESE of	Within 45 km	N	N	Outwith the ZTV despite coastal views and North Sea key to setting.
Scheduled Monument	SM5810	-	St Ethernan's, Rathen old parish church	Within 45 km	N	N	Outwith ZTV and coastal views not integral to setting. Local setting of Rathen village.
Garden and Designed Landscape	GDL00396	-	Cairness	Within 40 km	Partial	N	Grade A Listed Cairness House outwith the ZTV along with majority of policy. Long distance views of coast are not integral to setting.
Garden and Designed Landscape	GDL00397	-	Crimonmogate	Within 40 km	Y	N	Grade A Listed Cromingate House sits within a wooden estate and is screened from the Offshore Development. The policy and associated structures, walkways and driveways are largely inward facing and insular. Coastal views are not integral to setting which is more focused on the historic A90 between Fraserborough and Aberdeen.
Conservation Area	CA416	-	Crimonmogate	Within 40 km	Y	N	Within the ZTV but setting associated with Crimongate House and Estate. Coastal views are not integral to setting.

Asset type	Asset ref	Listed Building Category	Asset name	Distance	Within Screened ZTV	Included for assessment	Rationale
Conservation Area	CA429	-	Port Errol Cruden Bay	Within 45 km	N	N	Outwith the ZTV and not included despite coastal position.
Listed Building	LB39669	B	Churchyard, Old St Peter's Church, South Road, Peterhead	Within 35 km	Y	N	Within core settlement of Peterhead with views interrupted by housing and commercial properties. Unlikely to be 'Significant Effects' from Offshore Development.
Listed Building	LB39670	B	Kirkburn House, South Road, Peterhead	Within 35 km	Y	N	Within core settlement of Peterhead with views interrupted by housing and commercial properties. Unlikely to be 'Significant Effects' from Offshore Development.
Listed Building	LB39671	A	Old Parish Church, Erroll Street, Peterhead	Within 35 km	N	N	Within core settlement of Peterhead with views interrupted by housing and commercial properties. Unlikely to be 'Significant Effects' from Offshore Development.
Listed Building	LB39672	B	16, 18, 20, 24, 26 Marischal Street, Peterhead	Within 35 km	Y	N	Within core settlement of Peterhead with views interrupted by housing and commercial properties. Unlikely to be 'Significant Effects' from Offshore Development.
Listed Building	LB39673	B	Reform Monument, Broad Street, Peterhead	Within 35 km	Y	N	Within core settlement of Peterhead with views interrupted by housing and commercial properties. Unlikely to be 'Significant Effects' from Offshore Development.
Listed Building	LB39674	B	Town House, Broad Street, Peterhead	Within 35 km	Y	N	Within core settlement of Peterhead with views interrupted by housing and commercial properties. Unlikely to be 'Significant Effects' from Offshore Development.
Listed Building	LB39675	B	Statue Of Field Marshall Keith, Broad Street, Peterhead	Within 35 km	Y	N	Within core settlement of Peterhead with views interrupted by housing and commercial properties. Unlikely to be 'Significant Effects' from Offshore Development.
Listed Building	LB39676	C	Royal Hotel 17, 19, 21, 23, 27 Broad Street, Peterhead	Within 35 km	Y	N	Within core settlement of Peterhead with views interrupted by housing and commercial

Asset type	Asset ref	Listed Building Category	Asset name	Distance	Within Screened ZTV	Included for assessment	Rationale
							properties. Unlikely to be 'Significant Effects' from Offshore Development.
Listed Building	LB39677	C	25, 29, 31, 33 Broad Street, Peterhead	Within 35 km	Y	N	Within core settlement of Peterhead with views interrupted by housing and commercial properties. Unlikely to be 'Significant Effects' from Offshore Development.
Listed Building	LB39679	C	35 Broad Street, Peterhead	Within 35 km	Y	N	Within core settlement of Peterhead with views interrupted by housing and commercial properties. Unlikely to be 'Significant Effects' from Offshore Development.
Listed Building	LB39680	C	53, 55 Broad Street, Peterhead	Within 35 km	Y	N	Within core settlement of Peterhead with views interrupted by housing and commercial properties. Unlikely to be 'Significant Effects' from Offshore Development.
Listed Building	LB39681	B	59 Broad Street, Peterhead	Within 35 km	Y	N	Within core settlement of Peterhead with views interrupted by housing and commercial properties. Unlikely to be 'Significant Effects' from Offshore Development.
Listed Building	LB39682	C	61, 63 Broad Street, Peterhead	Within 35 km	Y	N	Within core settlement of Peterhead with views interrupted by housing and commercial properties. Unlikely to be 'Significant Effects' from Offshore Development.
Listed Building	LB39683	B	65, 67, 69, 71 Broad Street, Peterhead	Within 35 km	Y	N	Within core settlement of Peterhead with views interrupted by housing and commercial properties. Unlikely to be 'Significant Effects' from Offshore Development.
Listed Building	LB39684	B	Former Clydesdale Bank, 75 Broad Street, Peterhead	Within 35 km	Y	N	Within core settlement of Peterhead with views interrupted by housing and commercial properties. Unlikely to be 'Significant Effects' from Offshore Development.
Listed Building	LB39685	B	77 Broad Street, Peterhead	Within 35 km	Y	N	Within core settlement of Peterhead with views interrupted by housing and commercial

Asset type	Asset ref	Listed Building Category	Asset name	Distance	Within Screened ZTV	Included for assessment	Rationale
							properties. Unlikely to be 'Significant Effects' from Offshore Development.
Listed Building	LB39686	C	79, 81 Broad Street, Peterhead	Within 35 km	Y	N	Within core settlement of Peterhead with views interrupted by housing and commercial properties. Unlikely to be 'Significant Effects' from Offshore Development.
Listed Building	LB39687	B	1, 3, 10, 12, 14, 16 Broad Street, Peterhead	Within 35 km	Y	N	Outwith the ZTV despite being within core settlement of Peterhead with views interrupted by housing and commercial properties. Unlikely to be 'Significant Effects' from Offshore Development.
Listed Building	LB39688	B	National Commercial Bank, 30 Broad Street, 28, Peterhead	Within 35 km	Y	N	Within core settlement of Peterhead with views interrupted by housing and commercial properties. Unlikely to be 'Significant Effects' from Offshore Development.
Listed Building	LB39689	B	Bank Of Scotland Building, Broad Street, Peterhead	Within 35 km	Y	N	Within core settlement of Peterhead with views interrupted by housing and commercial properties. Unlikely to be 'Significant Effects' from Offshore Development.
Listed Building	LB39690	B	34 Broad Street, Peterhead	Within 35 km	Y	N	Within core settlement of Peterhead with views interrupted by housing and commercial properties. Unlikely to be 'Significant Effects' from Offshore Development.
Listed Building	LB39691	C	36, 38 Broad Street, Peterhead	Within 35 km	Y	N	Within core settlement of Peterhead with views interrupted by housing and commercial properties. Unlikely to be 'Significant Effects' from Offshore Development.
Listed Building	LB39692	C	40, 42, 44, 46 Broad Street, Peterhead	Within 35 km	Y	N	Within core settlement of Peterhead with views interrupted by housing and commercial properties. Unlikely to be 'Significant Effects' from Offshore Development.
Listed Building	LB39693	B	60 Broad Street, Peterhead	Within 35 km	Y	N	Within core settlement of Peterhead with views interrupted by housing and commercial

Asset type	Asset ref	Listed Building Category	Asset name	Distance	Within Screened ZTV	Included for assessment	Rationale
							properties. Unlikely to be 'Significant Effects' from Offshore Development.
Listed Building	LB39694	B	Arbutnot House, Broad Street, Peterhead	Within 35 km	Y	N	Within core settlement of Peterhead with views interrupted by housing and commercial properties. Unlikely to be 'Significant Effects' from Offshore Development.
Listed Building	LB39695	B	Union Bar, 1, 3 Union Street, Peterhead	Within 35 km	Y	N	Within core settlement of Peterhead with views interrupted by housing and commercial properties. Unlikely to be 'Significant Effects' from Offshore Development.
Listed Building	LB39696	C	4 Union Street, Peterhead	Within 35 km	Y	N	Within core settlement of Peterhead with views interrupted by housing and commercial properties. Unlikely to be 'Significant Effects' from Offshore Development.
Listed Building	LB39697	C	17 James Street, Peterhead	Within 35 km	Y	N	Within core settlement of Peterhead with views interrupted by housing and commercial properties. Unlikely to be 'Significant Effects' from Offshore Development.
Listed Building	LB39698	C	21 James Street, Peterhead	Within 35 km	Y	N	Within core settlement of Peterhead with views interrupted by housing and commercial properties. Unlikely to be 'Significant Effects' from Offshore Development.
Listed Building	LB39699	C	23, 25 James Street, Peterhead	Within 35 km	Y	N	Within core settlement of Peterhead with views interrupted by housing and commercial properties. Unlikely to be 'Significant Effects' from Offshore Development.
Listed Building	LB39700	C	18, 20 James Street, Peterhead	Within 35 km	Y	N	Within core settlement of Peterhead with views interrupted by housing and commercial properties. Unlikely to be 'Significant Effects' from Offshore Development.
Listed Building	LB39701	B	22, 24, 26 James Street, Peterhead	Within 35 km	Y	N	Within core settlement of Peterhead with views interrupted by housing and commercial

Asset type	Asset ref	Listed Building Category	Asset name	Distance	Within Screened ZTV	Included for assessment	Rationale
							properties. Unlikely to be 'Significant Effects' from Offshore Development.
Listed Building	LB39702	C	30 James Street, 28, Peterhead	Within 35 km	Y	N	Within core settlement of Peterhead with views interrupted by housing and commercial properties. Unlikely to be 'Significant Effects' from Offshore Development.
Listed Building	LB39703	C	7 Saint Andrew Street, Peterhead	Within 35 km	Y	N	Within core settlement of Peterhead with views interrupted by housing and commercial properties. Unlikely to be 'Significant Effects' from Offshore Development.
Listed Building	LB39704	B	Warehouse, 17 Saint Andrew Street, Peterhead	Within 35 km	Y	N	Within core settlement of Peterhead with views interrupted by housing and commercial properties. Unlikely to be 'Significant Effects' from Offshore Development.
Listed Building	LB39705	C	25 Saint Andrew Street, Peterhead	Within 35 km	Y	N	Within core settlement of Peterhead with views interrupted by housing and commercial properties. Unlikely to be 'Significant Effects' from Offshore Development.
Listed Building	LB39706	C	27 Saint Andrew Street, Peterhead	Within 35 km	Y	N	Within core settlement of Peterhead with views interrupted by housing and commercial properties. Unlikely to be 'Significant Effects' from Offshore Development.
Listed Building	LB39707	B	4, 6 Saint Andrew Street, Peterhead	Within 35 km	Y	N	Within core settlement of Peterhead with views interrupted by housing and commercial properties. Unlikely to be 'Significant Effects' from Offshore Development.
Listed Building	LB39708	B	8, 10, 12, 14 Saint Andrew Street, Peterhead	Within 35 km	Y	N	Within core settlement of Peterhead with views interrupted by housing and commercial properties. Unlikely to be 'Significant Effects' from Offshore Development.
Listed Building	LB39709	C	16 Saint Andrew Street, Peterhead	Within 35 km	Y	N	Within core settlement of Peterhead with views interrupted by housing and commercial

Asset type	Asset ref	Listed Building Category	Asset name	Distance	Within Screened ZTV	Included for assessment	Rationale
							properties. Unlikely to be 'Significant Effects' from Offshore Development.
Listed Building	LB39710	C	20 Saint Andrew Street, 18, Peterhead	Within 35 km	Y	N	Within core settlement of Peterhead with views interrupted by housing and commercial properties. Unlikely to be 'Significant Effects' from Offshore Development.
Listed Building	LB39711	C	32 Saint Andrew Street, Peterhead	Within 35 km	Y	N	Within core settlement of Peterhead with views interrupted by housing and commercial properties. Unlikely to be 'Significant Effects' from Offshore Development.
Listed Building	LB39712	C	34, 36 Saint Andrew Street, Peterhead	Within 35 km	Y	N	Within core settlement of Peterhead with views interrupted by housing and commercial properties. Unlikely to be 'Significant Effects' from Offshore Development.
Listed Building	LB39713	B	1 Maiden Street, Peterhead	Within 35 km	N	N	Within core settlement of Peterhead with views interrupted by housing and commercial properties. Unlikely to be 'Significant Effects' from Offshore Development.
Listed Building	LB39714	B	3 Maiden Street, Peterhead	Within 35 km	N	N	Within core settlement of Peterhead with views interrupted by housing and commercial properties. Unlikely to be 'Significant Effects' from Offshore Development.
Listed Building	LB39715	B	5 Maiden Street, Peterhead	Within 35 km	N	N	Within core settlement of Peterhead with views interrupted by housing and commercial properties. Unlikely to be 'Significant Effects' from Offshore Development.
Listed Building	LB39716	B	7 Maiden Street, Peterhead	Within 35 km	Y	N	Within core settlement of Peterhead with views interrupted by housing and commercial properties. Unlikely to be 'Significant Effects' from Offshore Development.
Listed Building	LB39717	B	9, 11 Maiden Street, Peterhead	Within 35 km	Y	N	Within core settlement of Peterhead with views interrupted by housing and commercial

Asset type	Asset ref	Listed Building Category	Asset name	Distance	Within Screened ZTV	Included for assessment	Rationale
							properties. Unlikely to be 'Significant Effects' from Offshore Development.
Listed Building	LB39718	C	13 Maiden Street, Peterhead	Within 35 km	N	N	Within core settlement of Peterhead with views interrupted by housing and commercial properties. Unlikely to be 'Significant Effects' from Offshore Development.
Listed Building	LB39719	C	17, 19 Maiden Street, Peterhead	Within 35 km	N	N	Within core settlement of Peterhead with views interrupted by housing and commercial properties. Unlikely to be 'Significant Effects' from Offshore Development.
Listed Building	LB39720	C	23, 25 Maiden Street, Peterhead	Within 35 km	Y	N	Within core settlement of Peterhead with views interrupted by housing and commercial properties. Unlikely to be 'Significant Effects' from Offshore Development.
Listed Building	LB39721	C	27 Maiden Street, Peterhead	Within 35 km	Y	N	Within core settlement of Peterhead with views interrupted by housing and commercial properties. Unlikely to be 'Significant Effects' from Offshore Development.
Listed Building	LB39722	B	29, 31 Maiden Street, Peterhead	Within 35 km	N	N	Within core settlement of Peterhead with views interrupted by housing and commercial properties. Unlikely to be 'Significant Effects' from Offshore Development.
Listed Building	LB39723	B	39, 41 Maiden Street, Peterhead	Within 35 km	N	N	Within core settlement of Peterhead with views interrupted by housing and commercial properties. Unlikely to be 'Significant Effects' from Offshore Development.
Listed Building	LB39724	C	43 Maiden Street, Peterhead	Within 35 km	N	N	Within core settlement of Peterhead with views interrupted by housing and commercial properties. Unlikely to be 'Significant Effects' from Offshore Development.
Listed Building	LB39725	C	45 Maiden Street, Peterhead	Within 35 km	N	N	Within core settlement of Peterhead with views interrupted by housing and commercial

Asset type	Asset ref	Listed Building Category	Asset name	Distance	Within Screened ZTV	Included for assessment	Rationale
							properties. Unlikely to be 'Significant Effects' from Offshore Development.
Listed Building	LB39731	C	36, 38 Maiden Street, Peterhead	Within 35 km	N	N	Within core settlement of Peterhead with views interrupted by housing and commercial properties. Unlikely to be 'Significant Effects' from Offshore Development.
Listed Building	LB39732	B	4, 6, 8, 10, 42, 44, 46 Love Lane, Peterhead	Within 35 km	N	N	Within core settlement of Peterhead with views interrupted by housing and commercial properties. Unlikely to be 'Significant Effects' from Offshore Development.
Listed Building	LB39733	B	Dry Dock, Harbour, Peterhead	Within 35 km	N	N	Outwith the ZTV, despite being within core settlement of Peterhead and situated on streets overlooking the coast. Views largely unobscured by surrounding settlement.
Listed Building	LB39734	C	1B-3 Shiprow, Peterhead	Within 35 km	Y	N	Within core settlement of Peterhead with views interrupted by housing and commercial properties. Unlikely to be 'Significant Effects' from Offshore Development.
Listed Building	LB39735	B	Fish Processing Factory, Castle Street, Peterhead	Within 35 km	Y	N	Within core settlement of Peterhead with views interrupted by housing and commercial properties. Unlikely to be 'Significant Effects' from Offshore Development.
Listed Building	LB39736	C	Fish Processing Factory, Castle Street, Peterhead	Within 35 km	Y	N	Within core settlement of Peterhead with views interrupted by housing and commercial properties. Unlikely to be 'Significant Effects' from Offshore Development.
Listed Building	LB39740	C	2 Harbour Street, Peterhead	Within 35 km	Y	N	Within core settlement of Peterhead with views interrupted by housing and commercial properties. Unlikely to be 'Significant Effects' from Offshore Development.
Listed Building	LB39741	C	3 Harbour Street, Peterhead	Within 35 km	Y	N	Within core settlement of Peterhead with views interrupted by housing and commercial

Asset type	Asset ref	Listed Building Category	Asset name	Distance	Within Screened ZTV	Included for assessment	Rationale
							properties. Unlikely to be 'Significant Effects' from Offshore Development.
Listed Building	LB39742	B	4 Harbour Street, Peterhead	Within 35 km	Y	N	Within core settlement of Peterhead with views interrupted by housing and commercial properties. Unlikely to be 'Significant Effects' from Offshore Development.
Listed Building	LB39743	B	5 Harbour Street, Peterhead	Within 35 km	Y	N	Within core settlement of Peterhead with views interrupted by housing and commercial properties. Unlikely to be 'Significant Effects' from Offshore Development.
Listed Building	LB39744	B	The Brae, 6 Harbour Street, Peterhead	Within 35 km	Y	N	Within core settlement of Peterhead with views interrupted by housing and commercial properties. Unlikely to be 'Significant Effects' from Offshore Development.
Listed Building	LB39745	B	Custom Office, 12, 13, 14 Harbour Street, Peterhead	Within 35 km	Y	N	Within core settlement of Peterhead with views interrupted by housing and commercial properties. Unlikely to be 'Significant Effects' from Offshore Development.
Listed Building	LB39746	C	15, 16, 17 Harbour Street, Peterhead	Within 35 km	Y	N	Within core settlement of Peterhead with views interrupted by housing and commercial properties. Unlikely to be 'Significant Effects' from Offshore Development.
Listed Building	LB39747	B	19 Harbour Street, 18, Peterhead	Within 35 km	Y	N	Within core settlement of Peterhead with views interrupted by housing and commercial properties. Unlikely to be 'Significant Effects' from Offshore Development.
Listed Building	LB39748	C	22 Harbour Street, Harbour Office, 20, 21 Harbour Street, Peterhead	Within 35 km	Y	N	Within core settlement of Peterhead with views interrupted by housing and commercial properties. Unlikely to be 'Significant Effects' from Offshore Development.
Listed Building	LB39749	B	23 Harbour Street, Peterhead	Within 35 km	Y	N	Within core settlement of Peterhead with views interrupted by housing and commercial

Asset type	Asset ref	Listed Building Category	Asset name	Distance	Within Screened ZTV	Included for assessment	Rationale
							properties. Unlikely to be 'Significant Effects' from Offshore Development.
Listed Building	LB39750	B	Warehouse, 26-32 Harbour Street, Peterhead	Within 35 km	Y	N	Within core settlement of Peterhead and situated on streets overlooking the coast. Views largely unobscured by surrounding settlement.
Listed Building	LB39751	B	Bath House, Bath Street, Peterhead	Within 35 km	Y	N	Within core settlement of Peterhead with views interrupted by housing and commercial properties. Unlikely to be 'Significant Effects' from Offshore Development.
Listed Building	LB39752	C	1, 2 Bath Street, Peterhead	Within 35 km	Y	N	Within core settlement of Peterhead with views interrupted by housing and commercial properties. Unlikely to be 'Significant Effects' from Offshore Development.
Listed Building	LB39753	C	2 Charlotte Street, Peterhead	Within 35 km	Y	N	Within core settlement of Peterhead with views interrupted by housing and commercial properties. Unlikely to be 'Significant Effects' from Offshore Development.
Listed Building	LB39754	C	3, 4 Charlotte Street, Peterhead	Within 35 km	Y	N	Within core settlement of Peterhead with views interrupted by housing and commercial properties. Unlikely to be 'Significant Effects' from Offshore Development.
Listed Building	LB39755	C	6 Charlotte Street, Peterhead	Within 35 km	N	N	Within core settlement of Peterhead with views interrupted by housing and commercial properties. Unlikely to be 'Significant Effects' from Offshore Development.
Listed Building	LB39756	B	10 Charlotte Street, Peterhead	Within 35 km	N	N	Within core settlement of Peterhead with views interrupted by housing and commercial properties. Unlikely to be 'Significant Effects' from Offshore Development.
Listed Building	LB39757	C	Warehouse, 11, 12, 13, 14 Charlotte Street, Peterhead	Within 35 km	N	N	Within core settlement of Peterhead with views interrupted by housing and commercial

Asset type	Asset ref	Listed Building Category	Asset name	Distance	Within Screened ZTV	Included for assessment	Rationale
							properties. Unlikely to be 'Significant Effects' from Offshore Development.
Listed Building	LB39758	C	Bay View, 15 Charlotte Street, Peterhead	Within 35 km	N	N	Within core settlement of Peterhead with views interrupted by housing and commercial properties. Unlikely to be 'Significant Effects' from Offshore Development.
Listed Building	LB39759	C	Craignabo, 16 Charlotte Street, Peterhead	Within 35 km	N	N	Within core settlement of Peterhead with views interrupted by housing and commercial properties. Unlikely to be 'Significant Effects' from Offshore Development.
Listed Building	LB39760	B	18 Charlotte Street, Peterhead	Within 35 km	N	N	Within core settlement of Peterhead with views interrupted by housing and commercial properties. Unlikely to be 'Significant Effects' from Offshore Development.
Listed Building	LB39761	C	19 Charlotte Street, Peterhead	Within 35 km	N	N	Within core settlement of Peterhead with views interrupted by housing and commercial properties. Unlikely to be 'Significant Effects' from Offshore Development.
Listed Building	LB39762	C	Merlyne, 20 Charlotte Street, Peterhead	Within 35 km	N	N	Within core settlement of Peterhead with views interrupted by housing and commercial properties. Unlikely to be 'Significant Effects' from Offshore Development.
Listed Building	LB39763	C	21 Charlotte Street, Peterhead	Within 35 km	N	N	Within core settlement of Peterhead with views interrupted by housing and commercial properties. Unlikely to be 'Significant Effects' from Offshore Development.
Listed Building	LB39764	C	22 Charlotte Street, Peterhead	Within 35 km	N	N	Within core settlement of Peterhead with views interrupted by housing and commercial properties. Unlikely to be 'Significant Effects' from Offshore Development.
Listed Building	LB39765	C	3 Rose Street, Peterhead	Within 35 km	Y	N	Within core settlement of Peterhead with views interrupted by housing and commercial

Asset type	Asset ref	Listed Building Category	Asset name	Distance	Within Screened ZTV	Included for assessment	Rationale
							properties. Unlikely to be 'Significant Effects' from Offshore Development.
Listed Building	LB39766	C	7, 9, 11 Rose Street, Peterhead	Within 35 km	Y	N	Within core settlement of Peterhead with views interrupted by housing and commercial properties. Unlikely to be 'Significant Effects' from Offshore Development.
Listed Building	LB39767	C	13, 15, 17 Rose Street, 32 James Street, Peterhead	Within 35 km	Y	N	Within Core settlement of Peterhead with views interrupted by housing and commercial properties. Unlikely to be 'Significant Effects' from Offshore Development.
Listed Building	LB39768	C	4, 6, 10 Rose Street, 8, Peterhead	Within 35 km	Y	N	Within Core settlement of Peterhead with views interrupted by housing and commercial properties. Unlikely to be 'Significant Effects' from Offshore Development.
Listed Building	LB39769	B	Warehouse, 1, 3 Jamaica Street, Peterhead	Within 35 km	Y	N	Within Core settlement of Peterhead with views interrupted by housing and commercial properties. Unlikely to be 'Significant Effects' from Offshore Development.
Listed Building	LB39770	C	7, 9 Jamaica Street, Peterhead	Within 35 km	Y	N	Within Core settlement of Peterhead with views interrupted by housing and commercial properties. Unlikely to be 'Significant Effects' from Offshore Development.
Listed Building	LB39771	B	11 Jamaica Street, Peterhead	Within 35 km	Y	N	Within Core settlement of Peterhead with views interrupted by housing and commercial properties. Unlikely to be 'Significant Effects' from Offshore Development.
Listed Building	LB39772	B	13, 15 Jamaica Street, Peterhead	Within 35 km	Y	N	Within Core settlement of Peterhead with views interrupted by housing and commercial properties. Unlikely to be 'Significant Effects' from Offshore Development.
Listed Building	LB39773	B	17, 19, 21 Jamaica Street, Peterhead	Within 35 km	Y	N	Within Core settlement of Peterhead with views interrupted by housing and commercial

Asset type	Asset ref	Listed Building Category	Asset name	Distance	Within Screened ZTV	Included for assessment	Rationale
							properties. Unlikely to be 'Significant Effects' from Offshore Development.
Listed Building	LB39774	B	23 Jamaica Street, Peterhead	Within 35 km	Y	N	Within Core settlement of Peterhead with views interrupted by housing and commercial properties. Unlikely to be 'Significant Effects' from Offshore Development.
Listed Building	LB39775	B	25 Jamaica Street, Peterhead	Within 35 km	Y	N	Within Core settlement of Peterhead with views interrupted by housing and commercial properties. Unlikely to be 'Significant Effects' from Offshore Development.
Listed Building	LB39776	B	27 Jamaica Street, Peterhead	Within 35 km	Y	N	Within Core settlement of Peterhead with views interrupted by housing and commercial properties. Unlikely to be 'Significant Effects' from Offshore Development.
Listed Building	LB39777	C	1, 4 Saint Andrew Street, Peterhead	Within 35 km	Y	N	Within Core settlement of Peterhead with views interrupted by housing and commercial properties. Unlikely to be 'Significant Effects' from Offshore Development.
Listed Building	LB39778	C	6 Jamaica Street, Peterhead	Within 35 km	Y	N	Within Core settlement of Peterhead with views interrupted by housing and commercial properties. Unlikely to be 'Significant Effects' from Offshore Development.
Listed Building	LB39779	C	10, 12 Jamaica Street, Peterhead	Within 35 km	Y	N	Within Core settlement of Peterhead with views interrupted by housing and commercial properties. Unlikely to be 'Significant Effects' from Offshore Development.
Listed Building	LB39780	B	14 Jamaica Street, Peterhead	Within 35 km	Y	N	Within Core settlement of Peterhead with views interrupted by housing and commercial properties. Unlikely to be 'Significant Effects' from Offshore Development.
Listed Building	LB39781	B	16 Jamaica Street, Peterhead	Within 35 km	Y	N	Within Core settlement of Peterhead with views interrupted by housing and commercial

Asset type	Asset ref	Listed Building Category	Asset name	Distance	Within Screened ZTV	Included for assessment	Rationale
							properties. Unlikely to be 'Significant Effects' from Offshore Development.
Listed Building	LB39782	B	18 Jamaica Street, Peterhead	Within 35 km	Y	N	Within Core settlement of Peterhead with views interrupted by housing and commercial properties. Unlikely to be 'Significant Effects' from Offshore Development.
Listed Building	LB39783	B	20, 22 Jamaica Street, Peterhead	Within 35 km	Y	N	Within Core settlement of Peterhead with views interrupted by housing and commercial properties. Unlikely to be 'Significant Effects' from Offshore Development.
Listed Building	LB39784	B	24 Jamaica Street, Peterhead	Within 35 km	Y	N	Within Core settlement of Peterhead with views interrupted by housing and commercial properties. Unlikely to be 'Significant Effects' from Offshore Development.
Listed Building	LB39785	B	26 Jamaica Street, Peterhead	Within 35 km	Y	N	Within Core settlement of Peterhead with views interrupted by housing and commercial properties. Unlikely to be 'Significant Effects' from Offshore Development.
Listed Building	LB39786	B	11, 13 Merchant Street, Peterhead	Within 35 km	Y	N	Within Core settlement of Peterhead with views interrupted by housing and commercial properties. Unlikely to be 'Significant Effects' from Offshore Development.
Listed Building	LB39787	B	17, 19, 21 Merchant Street, Peterhead	Within 35 km	Y	N	Within Core settlement of Peterhead with views interrupted by housing and commercial properties. Unlikely to be 'Significant Effects' from Offshore Development.
Listed Building	LB39788	B	23 Merchant Street, Peterhead	Within 35 km	Y	N	Within Core settlement of Peterhead with views interrupted by housing and commercial properties. Unlikely to be 'Significant Effects' from Offshore Development.
Listed Building	LB39789	C	25, 27 Merchant Street, Peterhead	Within 35 km	Y	N	Within Core settlement of Peterhead with views interrupted by housing and commercial

Asset type	Asset ref	Listed Building Category	Asset name	Distance	Within Screened ZTV	Included for assessment	Rationale
							properties. Unlikely to be 'Significant Effects' from Offshore Development.
Listed Building	LB39790	B	29 Merchant Street, Peterhead	Within 35 km	Y	N	Within Core settlement of Peterhead with views interrupted by housing and commercial properties. Unlikely to be 'Significant Effects' from Offshore Development.
Listed Building	LB39791	B	31 Merchant Street, Peterhead	Within 35 km	Y	N	Within Core settlement of Peterhead with views interrupted by housing and commercial properties. Unlikely to be 'Significant Effects' from Offshore Development.
Listed Building	LB39792	C	37 Merchant Street, Peterhead	Within 35 km	Y	N	Within Core settlement of Peterhead with views interrupted by housing and commercial properties. Unlikely to be 'Significant Effects' from Offshore Development.
Listed Building	LB39793	C	39 Merchant Street, Peterhead	Within 35 km	Y	N	Within Core settlement of Peterhead with views interrupted by housing and commercial properties. Unlikely to be 'Significant Effects' from Offshore Development.
Listed Building	LB39794	C	41 Merchant Street, Peterhead	Within 35 km	Y	N	Within Core settlement of Peterhead with views interrupted by housing and commercial properties. Unlikely to be 'Significant Effects' from Offshore Development.
Listed Building	LB39795	C	43 Merchant Street, Peterhead	Within 35 km	Y	N	Within Core settlement of Peterhead with views interrupted by housing and commercial properties. Unlikely to be 'Significant Effects' from Offshore Development.
Listed Building	LB39796	C	45, 47 Merchant Street, Peterhead	Within 35 km	Y	N	Within Core settlement of Peterhead with views interrupted by housing and commercial properties. Unlikely to be 'Significant Effects' from Offshore Development.
Listed Building	LB39797	C	2 Wallace Street, Peterhead	Within 35 km	Y	N	Within Core settlement of Peterhead with views interrupted by housing and commercial

Asset type	Asset ref	Listed Building Category	Asset name	Distance	Within Screened ZTV	Included for assessment	Rationale
							properties. Unlikely to be 'Significant Effects' from Offshore Development.
Listed Building	LB39798	B	49 Merchant Street, Peterhead	Within 35 km	Y	N	Within Core settlement of Peterhead with views interrupted by housing and commercial properties. Unlikely to be 'Significant Effects' from Offshore Development.
Listed Building	LB39799	C	51 Merchant Street, Peterhead	Within 35 km	Y	N	Within Core settlement of Peterhead with views interrupted by housing and commercial properties. Unlikely to be 'Significant Effects' from Offshore Development.
Listed Building	LB39800	C	6 Merchant Street, Peterhead	Within 35 km	Y	N	Within Core settlement of Peterhead with views interrupted by housing and commercial properties. Unlikely to be 'Significant Effects' from Offshore Development.
Listed Building	LB39801	C	8 Merchant Street, Peterhead	Within 35 km	Y	N	Within Core settlement of Peterhead with views interrupted by housing and commercial properties. Unlikely to be 'Significant Effects' from Offshore Development.
Listed Building	LB39802	B	Waverley Hotel, 10 Merchant Street, Peterhead	Within 35 km	Y	N	Within Core settlement of Peterhead with views interrupted by housing and commercial properties. Unlikely to be 'Significant Effects' from Offshore Development.
Listed Building	LB39803	B	12, 14 Merchant Street, Peterhead	Within 35 km	Y	N	Within Core settlement of Peterhead with views interrupted by housing and commercial properties. Unlikely to be 'Significant Effects' from Offshore Development.
Listed Building	LB39804	B	16, 18 Merchant Street, Peterhead	Within 35 km	Y	N	Within Core settlement of Peterhead with views interrupted by housing and commercial properties. Unlikely to be 'Significant Effects' from Offshore Development.
Listed Building	LB39805	C	20 Merchant Street, Peterhead	Within 35 km	Y	N	Within Core settlement of Peterhead with views interrupted by housing and commercial

Asset type	Asset ref	Listed Building Category	Asset name	Distance	Within Screened ZTV	Included for assessment	Rationale
							properties. Unlikely to be 'Significant Effects' from Offshore Development.
Listed Building	LB39806	C	Hall, St Peter's Episcopal Church, Merchant Street, Peterhead	Within 35 km	Y	N	Within Core settlement of Peterhead with views interrupted by housing and commercial properties. Unlikely to be 'Significant Effects' from Offshore Development.
Listed Building	LB39807	B	St Peter's Episcopal Church, Merchant Street, Peterhead	Within 35 km	Y	N	Within Core settlement of Peterhead with views interrupted by housing and commercial properties. Unlikely to be 'Significant Effects' from Offshore Development.
Listed Building	LB39808	C	24 Merchant Street, Peterhead	Within 35 km	Y	N	Within Core settlement of Peterhead with views interrupted by housing and commercial properties. Unlikely to be 'Significant Effects' from Offshore Development.
Listed Building	LB39809	C	28 Merchant Street, Peterhead	Within 35 km	Y	N	Within Core settlement of Peterhead with views interrupted by housing and commercial properties. Unlikely to be 'Significant Effects' from Offshore Development.
Listed Building	LB39810	C	30 Merchant Street, Peterhead	Within 35 km	Y	N	Within Core settlement of Peterhead with views interrupted by housing and commercial properties. Unlikely to be 'Significant Effects' from Offshore Development.
Listed Building	LB39811	C	42 Merchant Street, Peterhead	Within 35 km	Y	N	Within Core settlement of Peterhead with views interrupted by housing and commercial properties. Unlikely to be 'Significant Effects' from Offshore Development.
Listed Building	LB39812	C	12 Uphill Lane, Peterhead	Within 35 km	Y	N	Within Core settlement of Peterhead with views interrupted by housing and commercial properties. Unlikely to be 'Significant Effects' from Offshore Development.
Listed Building	LB39813	B	2, 4 Threadneedle Street, Peterhead	Within 35 km	N	N	Within Core settlement of Peterhead with views interrupted by housing and commercial

Asset type	Asset ref	Listed Building Category	Asset name	Distance	Within Screened ZTV	Included for assessment	Rationale
							properties. Unlikely to be 'Significant Effects' from Offshore Development.
Listed Building	LB39816	B	1 St Peter Street, Peterhead	Within 35 km	Y	N	Within Core settlement of Peterhead with views interrupted by housing and commercial properties. Unlikely to be 'Significant Effects' from Offshore Development.
Listed Building	LB39817	B	3 St Peter Street, Peterhead	Within 35 km	Y	N	Within Core settlement of Peterhead with views interrupted by housing and commercial properties. Unlikely to be 'Significant Effects' from Offshore Development.
Listed Building	LB39818	B	St Peter's Roman Catholic Church and Presbytery, 30 St Peter Street, Peterhead	Within 35 km	Y	N	Within Core settlement of Peterhead with views interrupted by housing and commercial properties. Unlikely to be 'Significant Effects' from Offshore Development.
Listed Building	LB39819	B	West Associate Church, St Peter Street, Peterhead	Within 35 km	Y	N	Within Core settlement of Peterhead with views interrupted by housing and commercial properties. Unlikely to be 'Significant Effects' from Offshore Development.
Listed Building	LB39821	B	36, 38 Queen Street, Peterhead	Within 35 km	Y	N	Within Core settlement of Peterhead with views interrupted by housing and commercial properties. Unlikely to be 'Significant Effects' from Offshore Development.
Listed Building	LB39822	C	68, 70, 72 Queen Street, Peterhead	Within 35 km	Y	N	Within Core settlement of Peterhead with views interrupted by housing and commercial properties. Unlikely to be 'Significant Effects' from Offshore Development.
Listed Building	LB39823	B	76 Queen Street, Peterhead	Within 35 km	Y	N	Within Core settlement of Peterhead with views interrupted by housing and commercial properties. Unlikely to be 'Significant Effects' from Offshore Development.
Listed Building	LB39824	C	80 Queen Street, 78, Peterhead	Within 35 km	Y	N	Within Core settlement of Peterhead with views interrupted by housing and commercial

Asset type	Asset ref	Listed Building Category	Asset name	Distance	Within Screened ZTV	Included for assessment	Rationale
							properties. Unlikely to be 'Significant Effects' from Offshore Development.
Listed Building	LB39825	C	82, 84, 86 Queen Street, Peterhead	Within 35 km	Y	N	Within Core settlement of Peterhead with views interrupted by housing and commercial properties. Unlikely to be 'Significant Effects' from Offshore Development.
Listed Building	LB39826	B	Child Guidance Clinic, 16 Prince Street, Peterhead	Within 35 km	Y	N	Within Core settlement of Peterhead with views interrupted by housing and commercial properties. Unlikely to be 'Significant Effects' from Offshore Development.
Listed Building	LB39827	B	27 Prince Street, Peterhead	Within 35 km	Y	N	Within Core settlement of Peterhead with views interrupted by housing and commercial properties. Unlikely to be 'Significant Effects' from Offshore Development.
Listed Building	LB39848	C	26 Cairntrodlie, Peterhead	Within 35 km	Y	N	Within Core settlement of Peterhead with views interrupted by housing and commercial properties. Unlikely to be 'Significant Effects' from Development.
Listed Building	LB39849	C	28 Cairntrodlie, Peterhead	Within 35 km	Y	N	Within Core settlement of Peterhead with views interrupted by housing and commercial properties. Unlikely to be 'Significant Effects' from Development.
Listed Building	LB50145	C	St Andrew's Church Of Scotland Parish Church, Queen Street and Boundary Walls	Within 35 km	Y	N	Within Core settlement of Peterhead with views interrupted by housing and commercial properties. Unlikely to be 'Significant Effects' from Development.
Listed Building	LB52606	C	Library and museum, Peterhead	Within 35 km	Y	N	Within Core settlement of Peterhead with views interrupted by housing and commercial properties. Unlikely to be 'Significant Effects' from Development.
Listed Building	LB13717	C	The Pavilions, Lonmay	Within 40 km	N	N	Outwith the ZTV. Coastal views not integral to setting.

Asset type	Asset ref	Listed Building Category	Asset name	Distance	Within Screened ZTV	Included for assessment	Rationale
Listed Building	LB13718	B	Sundial, Crimonmogate House	Within 40 km	N	N	Outwith the ZTV. Coastal views not integral to setting.
Listed Building	LB16361	C	Lodge, Whitehill House	Within 40 km	N	N	Outwith the ZTV and coastal views not integral to setting
Listed Building	LB16363	B	Windmill Tower, Glenugie Distillery, Peterhead	Within 40 km	N	N	Outwith the ZTV and coastal views not integral to setting
Listed Building	LB16388	B	Balmoor Bridge, Inverugie	Within 40 km	N	N	Outwith the ZTV and coastal views not integral to setting
Listed Building	LB16389	C	Howe O'Buchan	Within 40 km	Y	N	Within the ZTV but coastal views not integral to setting
Listed Building	LB16390	B	Richmondhill House, Richmondhill	Within 40 km	N	N	Outwith the ZTV and coastal views not integral to setting
Listed Building	LB16391	C	Cocklaw Mains	Within 40 km	Y	N	Within the ZTV but coastal views not integral to setting
Listed Building	LB16393	B	Dovecot, Mountpleasant House	Within 40 km	Y	N	Within the ZTV but coastal views not integral to setting
Listed Building	LB16394	B	Berryhill	Within 40 km	Y	N	Within the ZTV but coastal views not integral to setting
Listed Building	LB16395	B	Blackhill House	Within 40 km	Y	N	Within the ZTV but coastal views integral to setting
Listed Building	LB16531	B	St Fergus Parish Church And Churchyard, St Fergus	Within 40 km	Y	N	Within the ZTV but coastal views integral to setting
Listed Building	LB16532	C	The Glebe (former Manse of St Fergus), Kirktown, St Fergus, Peterhead	Within 40 km	Y	N	Within the ZTV but coastal views integral to setting
Listed Building	LB16535	C	The Gables, St Fergus	Within 40 km	Y	N	Within the ZTV but coastal views integral to setting
Listed Building	LB16537	C	Inverugie Bridge, River Ugie, Inverugie	Within 40 km	N	N	Outwith the ZTV and coastal views not integral to setting
Listed Building	LB18960	C	Farmhouse, Richmond Farm	Within 40 km	Y	N	Within the ZTV but coastal views integral to setting

Asset type	Asset ref	Listed Building Category	Asset name	Distance	Within Screened ZTV	Included for assessment	Rationale
Listed Building	LB18976	C	Kinloch	Within 40 km	Y	N	Within the ZTV but coastal views integral to setting
Listed Building	LB3028	A	Crimond Parish Church, Crimond	Within 40 km	Y	N	Within the ZTV but coastal views integral to setting
Listed Building	LB3029	B	Old School And Schoolhouse, Crimond	Within 40 km	Y	N	Within the ZTV but coastal views integral to setting
Listed Building	LB3031	C	Manse, Crimond Parish Church, Crimond	Within 40 km	Y	N	Within the ZTV but coastal views integral to setting
Listed Building	LB3032	C	Hillhead Farmhouse	Within 40 km	Y	N	Within the ZTV but coastal views integral to setting
Listed Building	LB3033	C	Dipplebrae Farmhouse	Within 40 km	Y	N	Within the ZTV but coastal views integral to setting
Listed Building	LB3034	A	Haddo House	Within 40 km	N	N	Outwith the ZTV and coastal views not integral to setting
Listed Building	LB3035	C	Steading, Haddo House	Within 40 km	N	N	Outwith the ZTV and coastal views not integral to setting
Listed Building	LB3037	B	Lodge, Rattray House	Within 40 km	N	N	Outwith the ZTV and coastal views not integral to setting
Listed Building	LB3043	C	Mill Of Crimond	Within 40 km	Y	N	Within the ZTV but coastal views not integral to setting. Setting linked to Crimongate Estate and policy.
Listed Building	LB6738	C	Farmhouse, Mill Of Crimonmogate	Within 40 km	Y	N	Within the ZTV but coastal views not integral to setting. Setting linked to Crimongate Estate and policy.
Listed Building	LB9240	C	Game Larder, Crimonmogate House	Within 40 km	Y	N	Within the ZTV but coastal views not integral to setting. Setting linked to Crimongate Estate and policy.
Listed Building	LB9241	B	Monument, Crimonmogate House	Within 40 km	Y	N	Within the ZTV but coastal views not integral to setting. Setting linked to Crimongate Estate and policy.

Asset type	Asset ref	Listed Building Category	Asset name	Distance	Within Screened ZTV	Included for assessment	Rationale
Listed Building	LB9245	C	Outhouses And Garden Wall, Crimonmogate House	Within 40 km	Y	N	Within the ZTV but coastal views not integral to setting. Setting linked to Crimongate Estate and policy.
Listed Building	LB9252	B	East Lodge, Crimonmogate House	Within 40 km	Y	N	Within the ZTV but coastal views not integral to setting. Setting linked to Crimongate Estate and policy.
Listed Building	LB9253	C	Estate Bridge, Crimonmogate House	Within 40 km	Y	N	Within the ZTV but coastal views not integral to setting. Setting linked to Crimongate Estate and policy.
Listed Building	LB9254	C	Former Mill, Mill Of Crimonmogate	Within 40 km	Y	N	Within the ZTV but coastal views not integral to setting. Setting linked to Crimongate Estate and policy.
Listed Building	LB9262	B	Old Parish Church, Lonmay	Within 40 km	Y	N	Within the ZTV but coastal views not integral to setting. Setting linked to Cairness Estate.
Listed Building	LB9265	C	Walled Garden And Sundial, Cairness House	Within 40 km	Y	N	Within the ZTV but coastal views not integral to setting. Setting linked to Cairness Estate.
Listed Building	LB9270	A	Crimonmogate House	Within 40 km	Y	N	Within the ZTV but coastal views not integral to setting. Setting linked to Crimongate Estate and policy.
Listed Building	LB16081	C	New Bridge Of Gaval, North Ugie Water	Within 45 km	N	N	Outwith the ZTV. No association with coast and coastal views not integral to setting.
Listed Building	LB16121	C	West Lodge, Mormond House	Within 45 km	N	N	Outwith the ZTV. Country House. Coastal views not integral to setting.
Listed Building	LB16138	C	Rathen West Parish Church	Within 45 km	N	N	Outwith the ZTV. Associated with village of Rathen. Coastal views not integral to setting.
Listed Building	LB16140	C	Old Parish Churchyard, Rathen	Within 45 km	N	N	Outwith the ZTV. Associated with village of Rathen. Coastal views not integral to setting.
Listed Building	LB16141	C	Rathen House	Within 45 km	N	N	Outwith the ZTV. Associated with village of Rathen. Coastal views not integral to setting.
Listed Building	LB16142	C	Kirkmill House, former Rathen Manse Offices, Rathen	Within 45 km	N	N	Outwith the ZTV. Associated with village of Rathen. Coastal views not integral to setting.

Asset type	Asset ref	Listed Building Category	Asset name	Distance	Within Screened ZTV	Included for assessment	Rationale
Listed Building	LB16143	A	Cairnbulg Castle	Within 45 km	N	N	Outwith the ZTV despite being coastal asset.
Listed Building	LB16546	B	Church And Manse, New Leeds	Within 45 km	N	N	Outwith the ZTV. Rural church and coastal views not integral to setting.
Listed Building	LB19778	B	Cortes House	Within 45 km	Y	N	Within ZTV but a Country House. Surrounding rural landscape and not coastal views not integral to setting.
Listed Building	LB3057	B	Cruden Parish Church	Within 45 km	N	N	Outwith the ZTV and not included despite association with coastal village of Cruden Bay.
Listed Building	LB3058	C	Churchyard, Cruden Parish Church	Within 45 km	N	N	Outwith the ZTV and not included despite association with coastal village of Cruden Bay.
Listed Building	LB3059	B	Bishop's Bridge	Within 45 km	N	N	Outwith the ZTV and not included despite association with coastal village of Cruden Bay.
Listed Building	LB3063	B	Grain Mill, Nethermill	Within 45 km	N	N	Outwith the ZTV and not included despite association with coastal village of Cruden Bay.
Listed Building	LB3064	C	Old Bridge, Water Of Cruden, Nethermill	Within 45 km	N	N	Outwith the ZTV and not included despite association with coastal village of Cruden Bay.
Listed Building	LB3065	C	New Bridge, Water Of Cruden, Nethermill	Within 45 km	N	N	Outwith the ZTV and not included despite association with coastal village of Cruden Bay.
Listed Building	LB3066	B	Aucheries School	Within 45 km	N	N	Outwith the ZTV. Country school. Coastal views are not integral to setting.
Listed Building	LB3067	C	Old Bridge, Water Of Cruden, Midmill	Within 45 km	N	N	Outwith the ZTV. Coastal views are not integral to setting.
Listed Building	LB3068	B	Aldie	Within 45 km	Y	N	Within the ZTV. Country House. Coastal views not integral to setting.
Listed Building	LB3069	C	Bridge, Bridge Street, Cruden Bay	Within 45 km	N	N	Outwith the ZTV and not included despite association with coastal village of Cruden Bay.
Listed Building	LB3070	C	Icehouse, Harbour Street, Port Erroll	Within 45 km	N	N	Outwith the ZTV and not included despite association with coastal village of Cruden Bay.
Listed Building	LB3071	B	Bridge, Castle Road, Cruden Bay	Within 45 km	N	N	Outwith the ZTV and not included despite association with coastal village of Cruden Bay.

Asset type	Asset ref	Listed Building Category	Asset name	Distance	Within Screened ZTV	Included for assessment	Rationale
Listed Building	LB44724	C	Golf Professional's Shop And Starting Box, Aulton Road, Cruden Bay	Within 45 km	N	N	Outwith the ZTV. Not included despite coastal views associated with golf course.
Listed Building	LB49839	B	Longhaven House inclusive of Walled Garden With Fountain and Ancillary Buildings	Within 45 km	N	N	Outwith the ZTV. Country House. Coastal views are not integral to setting.
Listed Building	LB49840	C	St Columba's Episcopal Church, Lonmay inclusive of Lych Gate	Within 45 km	Y	N	Within the ZTV. Associated with Cairness House Estate and rural periphery. Coastal views not integral to setting.
Listed Building	LB51987	C	Office Block, Former Consolidated Pneumatic Tool Works Site, Kessock Road, Maconochie Road, Fraserburgh inclusive of Sawtoothed Machine Shop and workshop	Within 45 km	Y	N	Within the ZTV but an industrial building on the edge of Fraserburgh not associated with fishing or coastal industry.
Listed Building	LB52471	B	New Slains Castle, Cruden Bay	Within 45 km	Y	Y	Within the ZTV. Coastal views integral to setting.
Listed Building	LB9242	B	Stable Block, Crimonmogate House	Within 45 km	Y	N	Within the ZTV. Associated with Crimongate House Estate and rural periphery. Coastal views not integral to setting.
Listed Building	LB9243	B	Dairy, Crimonmogate House	Within 45 km	Y	N	Within the ZTV. Associated with Crimongate House Estate and rural periphery. Coastal views not integral to setting.
Listed Building	LB9244	C	Old Laundry, Crimonmogate House	Within 45 km	Y	N	Within the ZTV. Associated with Crimongate House Estate and rural periphery. Coastal views not integral to setting.
Listed Building	LB9246	B	Dovecot, Crimonmogate House	Within 45 km	Y	N	Within the ZTV. Associated with Crimongate House Estate and rural periphery. Coastal views not integral to setting.
Listed Building	LB9247	C	North Lodge, Crimonmogate House	Within 45 km	Y	N	Within the ZTV. Associated with Crimongate House Estate and rural periphery. Coastal views not integral to setting.

Asset type	Asset ref	Listed Building Category	Asset name	Distance	Within Screened ZTV	Included for assessment	Rationale
Listed Building	LB9248	B	West Lodge, Crimonmogate House	Within 45 km	Y	N	Within the ZTV. Associated with Crimongate House Estate and rural periphery. Coastal views not integral to setting.
Listed Building	LB9249	C	Walled Garden, Crimonmogate House	Within 45 km	Y	N	Within the ZTV. Associated with Crimongate House Estate and rural periphery. Coastal views not integral to setting.
Listed Building	LB9250	C	Kennels, Crimonmogate House	Within 45 km	Y	N	Within the ZTV. Associated with Crimongate House Estate and rural periphery. Coastal views not integral to setting.
Listed Building	LB9251	C	The Lythe, Crimonmogate House	Within 45 km	Y	N	Within the ZTV. Associated with Crimongate House Estate and rural periphery. Coastal views not integral to setting.
Listed Building	LB9255	B	Logie Gate-Lodge	Within 45 km	Y	N	Within the ZTV. Associated with Crimongate House Estate and rural periphery. Coastal views not integral to setting.
Listed Building	LB9256	B	The Coachhouse, Logie House	Within 45 km	Y	Y	Within the ZTV. Associated with Crimongate House Estate and rural periphery. Coastal views not integral to setting.
Listed Building	LB9257	B	Lumbs	Within 45 km	Y	N	Within the ZTV. Associated with Crimongate House Estate and rural periphery. Coastal views not integral to setting.
Listed Building	LB9259	C	Kininmonth House	Within 45 km	Y	N	Within the ZTV. Country House. Coastal views not integral to setting.
Listed Building	LB9260	C	Church, Kininmonth	Within 45 km	Y	N	Within the ZTV. Country church. Coastal views not integral to setting.
Listed Building	LB9261	B	Lonmay Parish Church And Burial-Ground	Within 45 km	Y	N	Within the ZTV. Associated with Cairness House Estate and rural periphery. Coastal views not integral to setting.
Listed Building	LB9263	A	Cairness House	Within 45 km	Y	N	Within the ZTV. Country House and Estate. Coastal views not integral to setting.

Asset type	Asset ref	Listed Building Category	Asset name	Distance	Within Screened ZTV	Included for assessment	Rationale
Listed Building	LB9264	A	South Lodge, Cairness House	Within 45 km	Y	N	Within the ZTV. Associated with Cairness House Estate and rural periphery. Coastal views not integral to setting.
Listed Building	LB9266	C	Home Farm, Cairness House	Within 45 km	Y	N	Within the ZTV. Associated with Cairness House Estate and rural periphery. Coastal views not integral to setting.
Listed Building	LB9267	C	Craigellie	Within 45 km	Y	N	Within the ZTV. Country House and Estate. Coastal views not integral to setting.
Listed Building	LB9268	C	Old House Of Craigellie inclusive of walled garden	Within 45 km	Y	N	Within the ZTV. Country House and Estate. Coastal views not integral to setting.
Listed Building	LB9269	C	West Gate-Lodge, Craigellie	Within 45 km	Y	N	Within the ZTV. Country House and Estate. Coastal views not integral to setting.
Listed Building	LB9410	A	Old Parish Church, Longside	Within 45 km	Y	N	Within the ZTV. Associated with rural village of Longside and coastal views not integral to setting.
Listed Building	LB9411	B	Parish Church, Inn Brae, Longside	Within 45 km	Y	N	Within the ZTV. Associated with rural village of Longside and coastal views not integral to setting.
Listed Building	LB9412	A	Churchyard Gateway, Inn Brae, Longside	Within 45 km	Y	N	Within the ZTV. Associated with rural village of Longside and coastal views not integral to setting.
Listed Building	LB9413	C	Burial Ground, Inn Brae, Longside	Within 45 km	Y	N	Within the ZTV. Associated with rural village of Longside and coastal views not integral to setting.
Listed Building	LB9415	C	Bruce Arms Hotel, 39 Main Street, Longside	Within 45 km	Y	N	Within the ZTV. Associated with rural village of Longside and coastal views not integral to setting.
Listed Building	LB9416	B	Marshlands, 40 Main Street, Longside	Within 45 km	Y	N	Within the ZTV. Associated with rural village of Longside and coastal views not integral to setting.

Asset type	Asset ref	Listed Building Category	Asset name	Distance	Within Screened ZTV	Included for assessment	Rationale
Listed Building	LB9417	B	Rowanlea, 56 Main Street, Longside	Within 45 km	Y	N	Within the ZTV. Associated with rural village of Longside and coastal views not integral to setting.
Listed Building	LB9418	C	Viewfield, 5 Inverquhomery Road, Longside	Within 45 km	Y	N	Within the ZTV. Associated with rural village of Longside and coastal views not integral to setting.
Listed Building	LB9419	B	Saint John's Church And Chapel Well, Longside	Within 45 km	N	N	Within the ZTV. Associated with rural village of Longside and coastal views not integral to setting.
Listed Building	LB9420	C	House And Garden Walls, Cairngall House	Within 45 km	Y	N	Within the ZTV. Associated with rural village of Longside and coastal views not integral to setting.
Listed Building	LB9421	B	Millbank House	Within 45 km	N	N	Outwith the ZTV. Country House. Coastal views not integral to setting.
Listed Building	LB9422	B	Bridge Of Rora	Within 45 km	N	N	Outwith the ZTV. No association with coast and coastal views not integral to setting.
Listed Building	LB9423	B	Mill Of Rora	Within 45 km	N	N	Outwith the ZTV. No association with coast and coastal views not integral to setting.
Listed Building	LB9424	C	Glenugie Bridge	Within 45 km	N	N	Outwith the ZTV. No association with coast and coastal views not integral to setting.
Listed Building	LB9425	B	Steading, Inverquhomery	Within 45 km	N	N	Outwith the ZTV. No association with coast and coastal views not integral to setting.
Listed Building	LB9426	B	Ne Dovecot, Centre Dovecot, SW Dovecot Inverquhomery	Within 45 km	N	N	Outwith the ZTV. No association with coast and coastal views not integral to setting.
Listed Building	LB9588	B	St Medan's Church And Philorth Churchyard, Fraserburgh	Within 45 km	N	N	Outwith ZTV deposite being coastal asset.
Listed Building	LB9589	B	Bridge Of Philorth	Within 45 km	N	N	Outwith the ZTV. Coastal views not integral to setting.
Listed Building	LB9590	C	Bridge Over Water Of Philorth, Fraserburgh	Within 45 km	N	N	Outwith the ZTV. Coastal views not integral to setting.

Asset type	Asset ref	Listed Building Category	Asset name	Distance	Within Screened ZTV	Included for assessment	Rationale
Listed Building	LB9591	B	Dovecot, Kinbog Farm	Within 45 km	Y	N	Within the ZTV. Setting associated with northern road to Fraserburgh and surrounding rural landscape.
Listed Building	LB9592	C	Kinglasser	Within 45 km	Y	N	Within the ZTV. Setting associated with northern road to Fraserburgh and surrounding rural landscape.

3.3 REFINEMENT FOLLOWING SETTING SITE VISIT

A setting site visit was undertaken in August 2023 to ground truth the bare earth ZTV, establish the reliability of the screened ZTV and to help refine the number of assets to be taken forward to assessment. Following this setting site visit a further round of sieving was undertaken, with further assets removed from consideration.

A total of 16 assets were removed from consideration following the setting site visit. Table 3.2 lists these assets along with a rationale for their exclusion.

TABLE 3.2: LIST OF ASSETS REMOVED FROM CONSIDERATION FOLLOWING SETTING SITE VISIT

Asset type	Asset ref	Listed Building Category	Asset name	Distance	Within Screened ZTV	Included for assessment	Rationale
Listed Building	LB16392	B	Dales House, Peterhead	40 km	Y	N	Within urban setting with obscured views. Coastal views largely lost.
Listed Building	LB19799	C	Lunderton House	40 km	Y	N	Coastal views largely obscured by screening from trees and farm buildings. Coastal views not integral to setting.
Listed Building	LB31895	C	Craigielea, 7 Saltoun Place, Fraserburgh	45 km	Y	N	Coastal views largely obscured by buildings. Coastal views not integral to setting.
Listed Building	LB31896	B	24, 26, 28, 30, 32 Saltoun Place, Fraserburgh	45 km	Y	N	Coastal views largely obscured by buildings. Coastal views not integral to setting.
Listed Building	LB31897	C	21-23 Saltoun Place, Fraserburgh	45 km	Y	N	Coastal views largely obscured by buildings. Coastal views not integral to setting.
Listed Building	LB31898	C	25 Saltoun Place, Fraserburgh	45 km	Y	N	Coastal views largely obscured by buildings. Coastal views not integral to setting.
Listed Building	LB31899	C	27, 29 Saltoun Place, Fraserburgh	45 km	Y	N	Coastal views largely obscured by buildings. Coastal views not integral to setting.
Listed Building	LB31900	C	31-33, 35 Saltoun Place, Fraserburgh	45 km	Y	N	Coastal views largely obscured by buildings. Coastal views not integral to setting.
Listed Building	LB31902	B	War Memorial, Saltoun Place, Fraserburgh	45 km	Y	N	Coastal views largely obscured by buildings. Coastal views not integral to setting.
Listed Building	LB31903	B	St Peter's School, Victoria Street, Fraserburgh	45 km	Y	N	Coastal views obscured by buildings. Coastal views not integral to setting.
Listed Building	LB31904	B	St Peter's Rectory, 39 Victoria Street, Fraserburgh	45 km	Y	N	Coastal views obscured by buildings. Coastal views not integral to setting.
Listed Building	LB31905	B	St Peter's Episcopal Church, Charlotte Street, Fraserburgh	45 km	Y	N	Coastal views obscured by buildings. Coastal views not integral to setting.
Listed Building	LB31906	B	Central School, Charlotte Street, Fraserburgh	45 km	Y	N	Coastal views obscured by buildings. Coastal views not integral to setting.
Listed Building	LB31907	C	113 Charlotte Street, Fraserburgh	45 km	Y	N	Coastal views obscured by buildings. Coastal views not integral to setting.

Asset type	Asset ref	Listed Building Category	Asset name	Distance	Within Screened ZTV	Included for assessment	Rationale
Listed Building	LB31908	B	Windmill Stump, Fraserburgh	45 km	Y	N	Coastal views obscured by buildings. Coastal views not integral to setting.
Listed Building	LB31909	B	2, 4, 6, 8, 10, 12, 14, 16 College Bounds, Fraserburgh	45 km	Y	N	Coastal views obscured by buildings. Coastal views not integral to setting.

4. ASSETS TAKEN FORWARD TO ASSESSMENT

Of the 371 assets within the bare earth ZTV initially selected for assessment of setting impacts, a total of 155 were included within the final list of assets taken forward to assessment. Following consultation with the Aberdeenshire Council it was confirmed no undesignated assets warranted assessment of setting impacts. The 155 designated assets taken forward to assessment include:

- 17 Scheduled Monuments;
- 6 Conservation Areas; and
- 132 Listed Buildings.

Table 4.1 below provides a full list of assets taken forward for assessment. Figures presenting the locations of these assets are provided in the **Volume ER.A.3, Chapter 17: Marine Archaeology and Cultural Heritage**.

It should be noted that the six Conservation Areas (CA425 Peterhead Buchanhaven, CA426 Peterhead Roanheads, CA427 Peterhead Central, CA428 Boddam, CA414 Broadsea Fraserburgh and CA663 Fraserburgh Town Centre) contain a number of listed buildings within the boundary of their respective Conservation Areas. Due to limited potential of the Offshore Development to generate meaningful adverse setting impacts or create significant adverse effect to the cultural significance of the listed buildings associated with these Conservation Areas, all listed buildings (with the exception of Category A buildings with specific coastal settings) are grouped within their respective Conservation Area and assessed collectively.

TABLE 4.1: LIST OF ASSETS TAKEN FORWARD TO ASSESSMENT

Asset type	Asset ref	Listed Building Category	Asset name
Scheduled Monument	SM11315	-	Ratray Line, pill box 80m E of Annachie Bridge
Scheduled Monument	SM5622	-	St Fergus's Church,old parish church
Scheduled Monument	SM11314	-	Ratray Line, pill box 960m NNW of Annachie Bridge
Scheduled Monument	SM11320	-	Ratray Line, pill box 1550m SSE of Home Farm
Scheduled Monument	SM11313	-	Ratray Line, pill box 1150m SSE of Home Farm
Scheduled Monument	SM11316	-	Ratray Line, pill box 675m NE of Old Ratray
Scheduled Monument	SM11317	-	Ratray Line, pill box 875m ENE of Old Ratray
Scheduled Monument	SM11318	-	Ratray Line, pill box 460 m WNW of Seatown
Scheduled Monument	SM11319	-	Ratray Line, pill box at Seatown
Scheduled Monument	SM11307	-	Ratray Line, pill box 55 m SE of Ratray Head Shore Station
Scheduled Monument	SM11308	-	Ratray Line, pill box 780 m ENE of Middleton of Ratray
Scheduled Monument	SM11311	-	Ratray Line, pill box 640 m SE of Ratray House
Scheduled Monument	SM3259	-	Castle Hill,motte SW of Hallmoss Farm
Scheduled Monument	SM3252	-	Boddam Castle
Scheduled Monument	SM11116	-	St Combs, St Columba's Church
Scheduled Monument	SM97	-	Inverallochy Castle
Scheduled Monument	SM90344	-	Wine Tower, tower
Conservation Area	CA425	-	Peterhead Buchanhaven
Conservation Area	CA426	-	Peterhead Roanheads
Conservation Area	CA427	-	Peterhead Central
Conservation Area	CA428	-	Bodam
Conservation Area	CA414	-	Broadsea Fraserburgh
Conservation Area	CA663	-	Fraserburgh town centre
Listed Building	LB16536	B	Old Churchyard of St Fergus
Listed Building	LB3036	C	Middleton Of Ratray

Asset type	Asset ref	Listed Building Category	Asset name
Listed Building	LB3038	B	Ratray House
Listed Building	LB3039	B	Walled Garden, Ratray House
Listed Building	LB3040	B	Ratray House Home Farm
Listed Building	LB3041	C	Laundry, Ratray House
Listed Building	LB3042	B	Ratray Head Lighthouse
Listed Building	LB39737	C	Former Sale Rooms, 1, 3 Bridge Street, Peterhead
Listed Building	LB39738	C	5, 7, 8 Bridge Street, Peterhead
Listed Building	LB39739	B	Harbour Garage, 1 Harbour Street, Peterhead
Listed Building	LB39828	C	6 North Street, Peterhead
Listed Building	LB39829	C	8 North Street, Peterhead
Listed Building	LB39830	C	10 North Street, Peterhead
Listed Building	LB39831	C	20 North Street, 18, Peterhead
Listed Building	LB39832	C	22, 24, 26 North Street, Peterhead
Listed Building	LB39833	C	28 North Street, Peterhead
Listed Building	LB39834	C	30 North Street, Peterhead
Listed Building	LB39835	C	Ratray View, 46 North Street, Peterhead
Listed Building	LB39836	C	Fairview Cottage, East North Street, Peterhead
Listed Building	LB39837	C	1, 2, 3, 4, 5, 6, 7, 8, 9, 10 Great Stuart Street, Peterhead
Listed Building	LB39838	C	4, 6, 10, 12, 14, 16, 18, 20, 22, 24, 25, 26, 27, 30, 32, 34 Port Henry Road, Peterhead
Listed Building	LB39839	C	9, 11, 13, 15, 17, 19, 21, 23, 25, 27, 29, 31, 33, 35, 37, 39 Port Henry Road, Peterhead
Listed Building	LB39840	C	1, 3, 5 Gladstone Road, Peterhead
Listed Building	LB39841	C	7, 9, 11, 13, 15, 17, 19, 21, 23, 25, 27, 29, 31, 33, 35, 37 Gladstone Road, Peterhead
Listed Building	LB39842	C	12, 14, 16, 18, 20, 22, 24, 26, 28, 30, 36, 38, 40, 42 Gladstone Road, Peterhead
Listed Building	LB39843	C	1, 3, 5, 7, 9, 11, 13, 15, 17, Almanythie Road, Peterhead
Listed Building	LB39844	C	2, 4, 6, 10, 12, 14, 16, 18 Almanythie Road, Peterhead
Listed Building	LB39845	C	2, 4, 6, 10, 12, New Street, Peterhead

Asset type	Asset ref	Listed Building Category	Asset name
Listed Building	LB39846	C	1, 3, 5, 7, 9, 11 New Street, Peterhead
Listed Building	LB39847	B	The Fish House, Golf Road, Buchanhaven, Peterhead
Listed Building	LB13889	B	12 Earls Court, Boddam
Listed Building	LB13890	C	Workshop And Garage, 1A Queen's Road, Boddam
Listed Building	LB16144	C	Parish Church, Inverallochy
Listed Building	LB16145	B	26 Shore Street, Inverallochy
Listed Building	LB16312	C	22 Queen's Road, Boddam
Listed Building	LB16313	C	Brethren Meeting House, 26 Gordon Street, Boddam
Listed Building	LB16314	C	Parish Church Of Boddam, Manse Terrace, Boddam
Listed Building	LB16335	C	22 Earl's Court, Boddam
Listed Building	LB16336	C	24 Earl's Court, Boddam
Listed Building	LB16337	B	Masonic Lodge No. 1087, 5, 7, 9 Rocksley Drive, Boddam
Listed Building	LB16338	C	11, 13 Rocksley Drive, Boddam
Listed Building	LB16339	C	15 Rocksley Drive, Boddam
Listed Building	LB16340	C	2 Rocksley Drive, Boddam
Listed Building	LB16341	C	6 Rocksley Drive, Boddam
Listed Building	LB16342	C	5 Harbour Street, Boddam
Listed Building	LB16343	C	7 Harbour Street, Boddam
Listed Building	LB16344	C	9 Harbour Street, Boddam
Listed Building	LB16345	C	Three Seats, Harbour Street, Boddam
Listed Building	LB16346	B	1 Queen's Road, Boddam
Listed Building	LB16347	C	3 Queen's Road, Boddam
Listed Building	LB16348	C	5 Queen's Road, Boddam
Listed Building	LB16349	C	7 Queen's Road, Boddam
Listed Building	LB16350	C	9 Queen's Road, Boddam
Listed Building	LB16351	C	11 Queen's Road, Boddam

Asset type	Asset ref	Listed Building Category	Asset name
Listed Building	LB16352	C	13 Queen's Road, Boddam
Listed Building	LB16353	C	15 Queen's Road, Boddam
Listed Building	LB16354	C	17 Queen's Road, Boddam
Listed Building	LB16355	C	2 Queen's Road, Boddam
Listed Building	LB16356	C	6 Queen's Road, Boddam
Listed Building	LB16357	C	8 Queen's Road, Boddam
Listed Building	LB16358	C	10, 12 Queen's Road, Boddam
Listed Building	LB16359	C	16 Queen's Road, Boddam
Listed Building	LB16360	C	20 Queen's Road, 18, Boddam
Listed Building	LB16362	B	Reform Tower, Meethill, Invernettie
Listed Building	LB16364	B	Sandford Lodge
Listed Building	LB16365	C	Walled Garden, Sandford Lodge
Listed Building	LB16366	B	Buchanness Cottage, Boddam
Listed Building	LB16367	A	Buchan Ness Lighthouse, Boddam
Listed Building	LB16368	C	1 Harbour Street, Boddam
Listed Building	LB16369	C	3, 4 Harbour Street, Boddam
Listed Building	LB16370	C	Retaining Wall, Harbour Street And Bridge Street, Boddam
Listed Building	LB16371	C	1 Bridge Street, Boddam
Listed Building	LB16372	C	3 Bridge Street, Boddam
Listed Building	LB16373	C	5 Bridge Street, Boddam
Listed Building	LB16374	C	7 Bridge Street, Boddam
Listed Building	LB16375	C	9 Bridge Street, Boddam
Listed Building	LB16376	C	11 Bridge Street, Boddam
Listed Building	LB16377	C	1 Earl's Court, Boddam
Listed Building	LB16378	C	5 Earl's Court, Boddam
Listed Building	LB16379	C	Outbuildings Between 7 And 9 Earl's Court, Boddam

Asset type	Asset ref	Listed Building Category	Asset name
Listed Building	LB16380	C	7 Earl's Court, Boddam
Listed Building	LB16382	C	11 Earl's Court, Boddam
Listed Building	LB16383	C	2, 4 Earl's Court, Boddam
Listed Building	LB16384	C	10 Earl's Court, 8, Boddam
Listed Building	LB16385	C	14 Earl's Court, Boddam
Listed Building	LB16386	C	16 Earl's Court, Boddam
Listed Building	LB16387	C	18 Earl's Court, Boddam
Listed Building	LB19779	C	1 Charles Street, Inverallochy
Listed Building	LB19794	C	1 Rocksley Drive, Boddam
Listed Building	LB19795	C	4 Rocksley Drive, Boddam
Listed Building	LB19796	C	4 Queen's Road, Boddam
Listed Building	LB19797	C	14 Queen's Road, Boddam
Listed Building	LB19798	C	3 Earl's Court, Boddam
Listed Building	LB3060	B	St James' Chapel, Chapel Hill, Cruden
Listed Building	LB3061	C	The Old Rectory, Cruden
Listed Building	LB3062	B	Erroll School House
Listed Building	LB3074	C	Hay Farm
Listed Building	LB31865	B	Old Parish Church, Fraserburgh
Listed Building	LB31866	B	Saltoun Mausoleum, Old Parish Church, Fraserburgh
Listed Building	LB31867	A	Market Cross, Saltoun Square, Fraserburgh
Listed Building	LB31868	B	Town House, 1, 3, Police Station, 3 Kirk Brae, Fraserburgh
Listed Building	LB31869	B	14-16 Saltoun Square, Fraserburgh
Listed Building	LB31870	B	Saltoun Arms Hotel, Saltoun Square, Fraserburgh
Listed Building	LB31871	B	Clydesdale Bank, 34 Broad Street, Fraserburgh
Listed Building	LB31872	B	50, 52, 54 Broad Street, Fraserburgh
Listed Building	LB31873	A	Custom House, Broad Street, Fraserburgh

Asset type	Asset ref	Listed Building Category	Asset name
Listed Building	LB31874	B	Britannic Assurance Company, 81, 83 Broad Street, Fraserburgh
Listed Building	LB31875	B	7, 9 Commerce Street, Fraserburgh
Listed Building	LB31876	B	3, 5 Commerce Street, Fraserburgh
Listed Building	LB31877	B	Government Offices, 10 Commerce Street, Fraserburgh
Listed Building	LB31878	B	South Parish Church, Seaforth Street, Fraserburgh
Listed Building	LB31879	C	Harbour Works Office At Middle Jetty, Fraserburgh
Listed Building	LB31880	B	World's End, 11 Dalrymple Street, Fraserburgh
Listed Building	LB31881	C	Dalrymple Hall, 13, 15 Dalrymple Street, Fraserburgh
Listed Building	LB31882	C	3 Duke Lane, Fraserburgh
Listed Building	LB31883	C	3 And 1/2 Duke Lane, Fraserburgh
Listed Building	LB31884	C	5 Duke Lane, Fraserburgh
Listed Building	LB31885	C	7 Duke Lane, Fraserburgh
Listed Building	LB31886	C	9 Duke Lane, Fraserburgh
Listed Building	LB31887	C	2 Duke Lane, Fraserburgh
Listed Building	LB31888	A	Former Kinnaird Head Lighthouse, Stevenson Road, Fraserburgh. Inclusive of Engine House, Assistant Keeper's Cottage, Head Keeper's Cottage, Boundary Walls and Fog Horn
Listed Building	LB31890	C	89 High Street, Fraserburgh
Listed Building	LB31891	B	Salvation Army Citadel, 66 Frithside Street, Fraserburgh
Listed Building	LB31892	C	62 Frithside Street, Fraserburgh
Listed Building	LB31893	C	41 Commerce Street, Fraserburgh
Listed Building	LB31894	C	1, 3 Lodge Walk, Fraserburgh
Listed Building	LB31901	B	60, 62, 64, 66, 68, 70 Saltoun Place, Fraserburgh
Listed Building	LB31968	C	2 Noble Street, Fraserburgh
Listed Building	LB31969	C	3, 5 Broadsea Road, Fraserburgh
Listed Building	LB31970	B	Fountain, Saltoun Place, Fraserburgh
Listed Building	LB52471	B	New Slains Castle, Cruden Bay

Asset type	Asset ref	Listed Building Category	Asset name
Listed Building	LB9256	B	The Coachhouse, Logie House



ERM HAS OVER 160 OFFICES ACROSS THE FOLLOWING COUNTRIES AND TERRITORIES WORLDWIDE

Argentina	The Netherlands
Australia	New Zealand
Belgium	Peru
Brazil	Poland
Canada	Portugal
China	Puerto Rico
Colombia	Romania
France	Senegal
Germany	Singapore
Ghana	South Africa
Guyana	South Korea
Hong Kong	Spain
India	Switzerland
Indonesia	Taiwan
Ireland	Tanzania
Italy	Thailand
Japan	UAE
Kazakhstan	UK
Kenya	US
Malaysia	Vietnam
Mexico	
Mozambique	

ERM's London Office
2nd Floor Exchequer Court
33 St Mary Axe
London
United Kingdom
EC3A 8AA
T: +44 20 3206 5200

www.erm.com