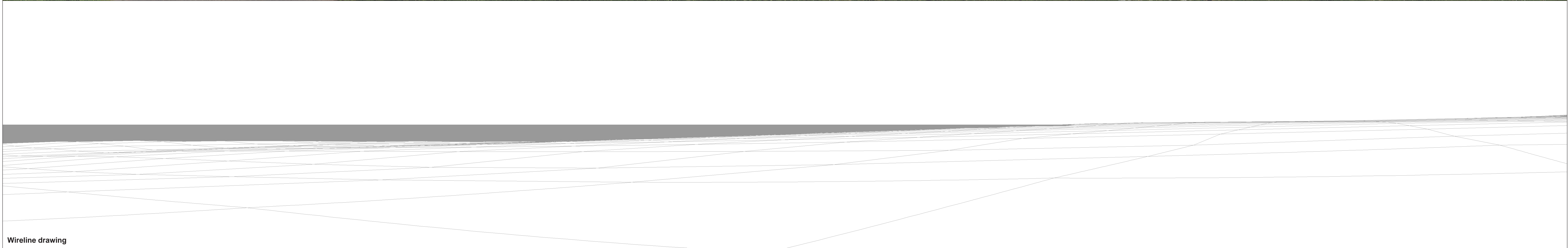




Baseline photograph

This image provides landscape and visual context only

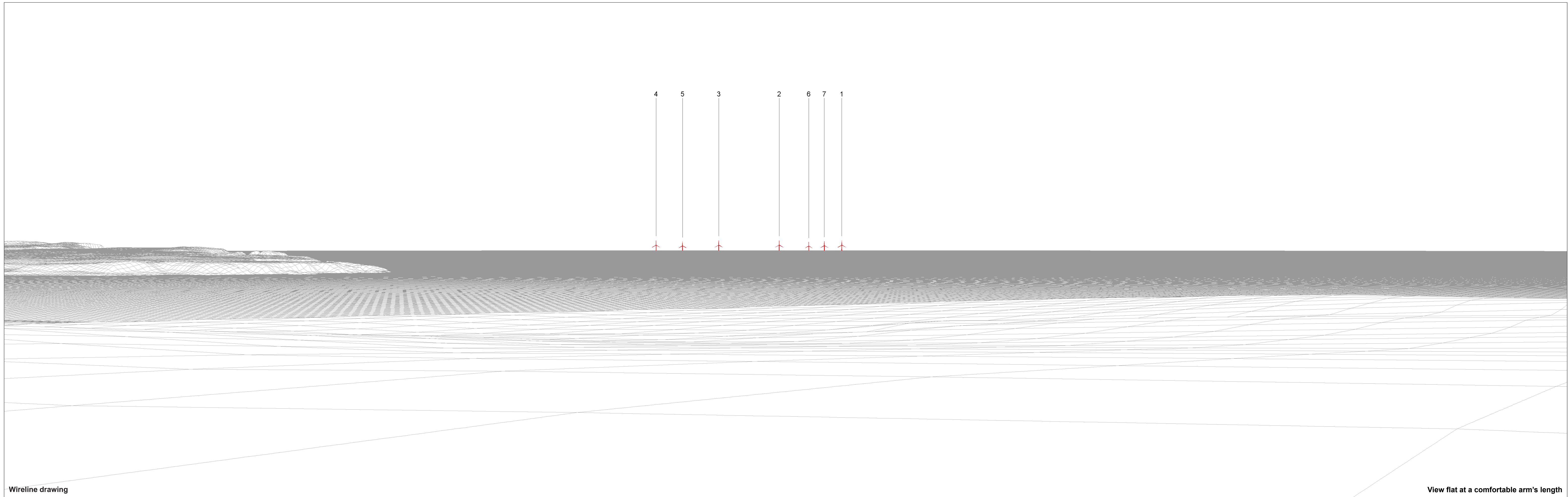


Wireline drawing

OS reference: 407805 E 833428 N  
 Eye level: 48.7 mAOD  
 Direction of view: 149°  
 Nearest turbine: 45.58 km

Horizontal field of view: 90° (cylindrical projection)  
 Principal distance: 522 mm  
 Paper size: 841 x 297 mm (half A1)  
 Correct printed image size: 820 x 130 mm

Camera: Canon EOS 6D  
 Lens: Canon EF 50mm f/1.4  
 Camera height: 1.5 m  
 Date and time: 08.06.2023 17:29



Wireline drawing

View flat at a comfortable arm's length

**OS reference:** 407805 E 833428 N  
**Eye level:** 48.7 mAOD  
**Direction of view:** 59°  
**Nearest turbine:** 45.58 km

**Horizontal field of view:** 53.5° (planar projection)  
**Principal distance:** 812.5 mm  
**Paper size:** 841 x 297 mm (half A1)  
**Correct printed image size:** 820 x 260 mm

**Camera:** Canon EOS 6D  
**Lens:** Canon EF 50mm f/1.4  
**Camera height:** 1.5 m  
**Date and time:** 08.06.2023 17:29

**Figure 16.27d**  
**Viewpoint 14: Cruden Bay (East Sandend)**  
**Salamander**  
© Crown copyright, All rights reserved (2023). Licence number 0100031673



Baseline Photograph

View flat at a comfortable arm's length

**OS reference:** 407805 E 833428 N  
**Eye level:** 48.7 mAOD  
**Direction of view:** 59°  
**Nearest turbine:** 45.58 km

**Horizontal field of view:** 53.5° (planar projection)  
**Principal distance:** 812.5 mm  
**Paper size:** 841 x 297 mm (half A1)  
**Correct printed image size:** 820 x 260 mm

**Camera:** Canon EOS 6D  
**Lens:** Canon EF 50mm f/1.4  
**Camera height:** 1.5 m  
**Date and time:** 08.06.2023 17:29

**Figure 16.27e**  
**Viewpoint 14: Cruden Bay (East Sandend)**  
**Salamander**  
© Crown copyright. All rights reserved (2023). Licence number 0100031673



Photomontage: Proposed Development

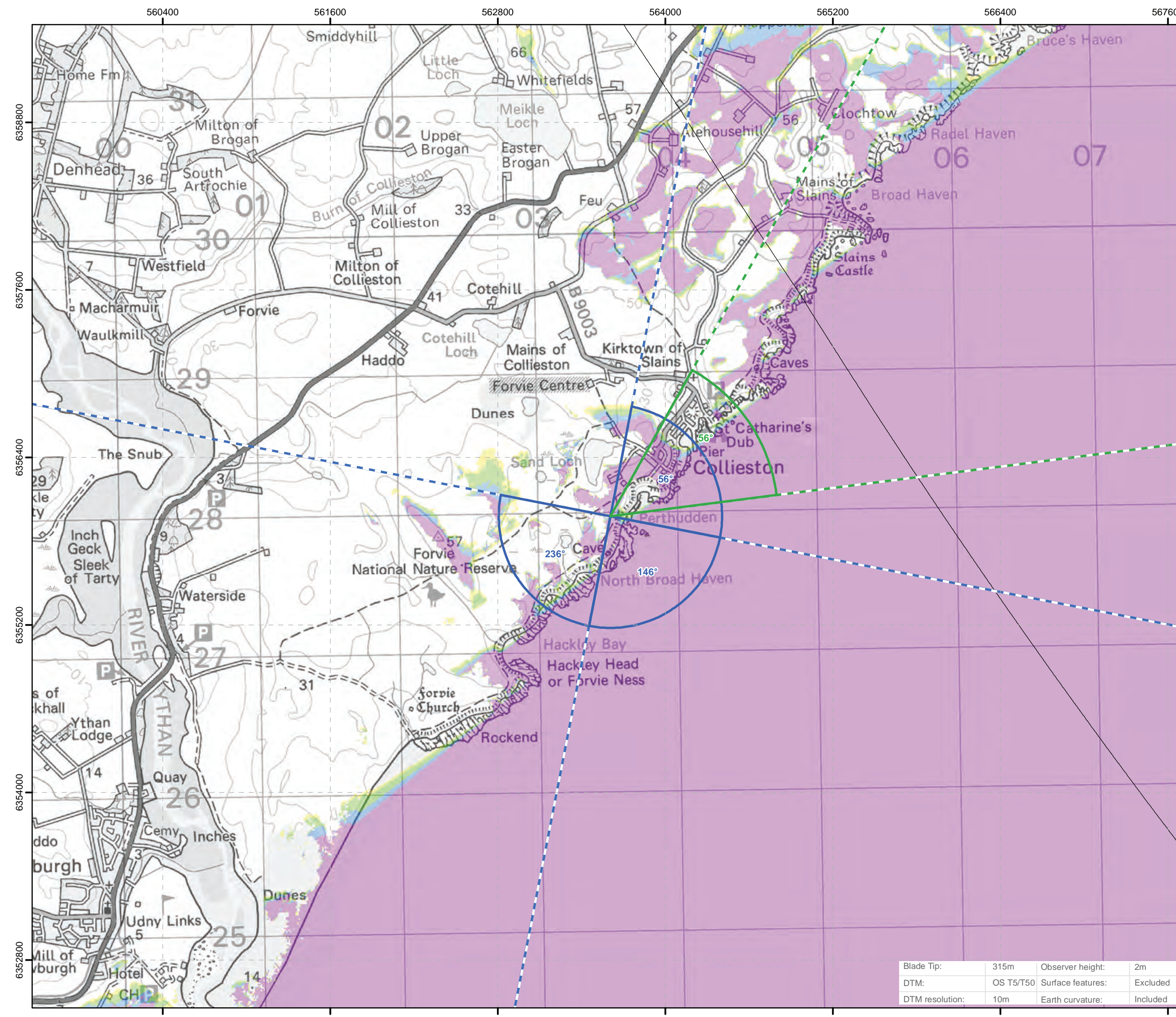
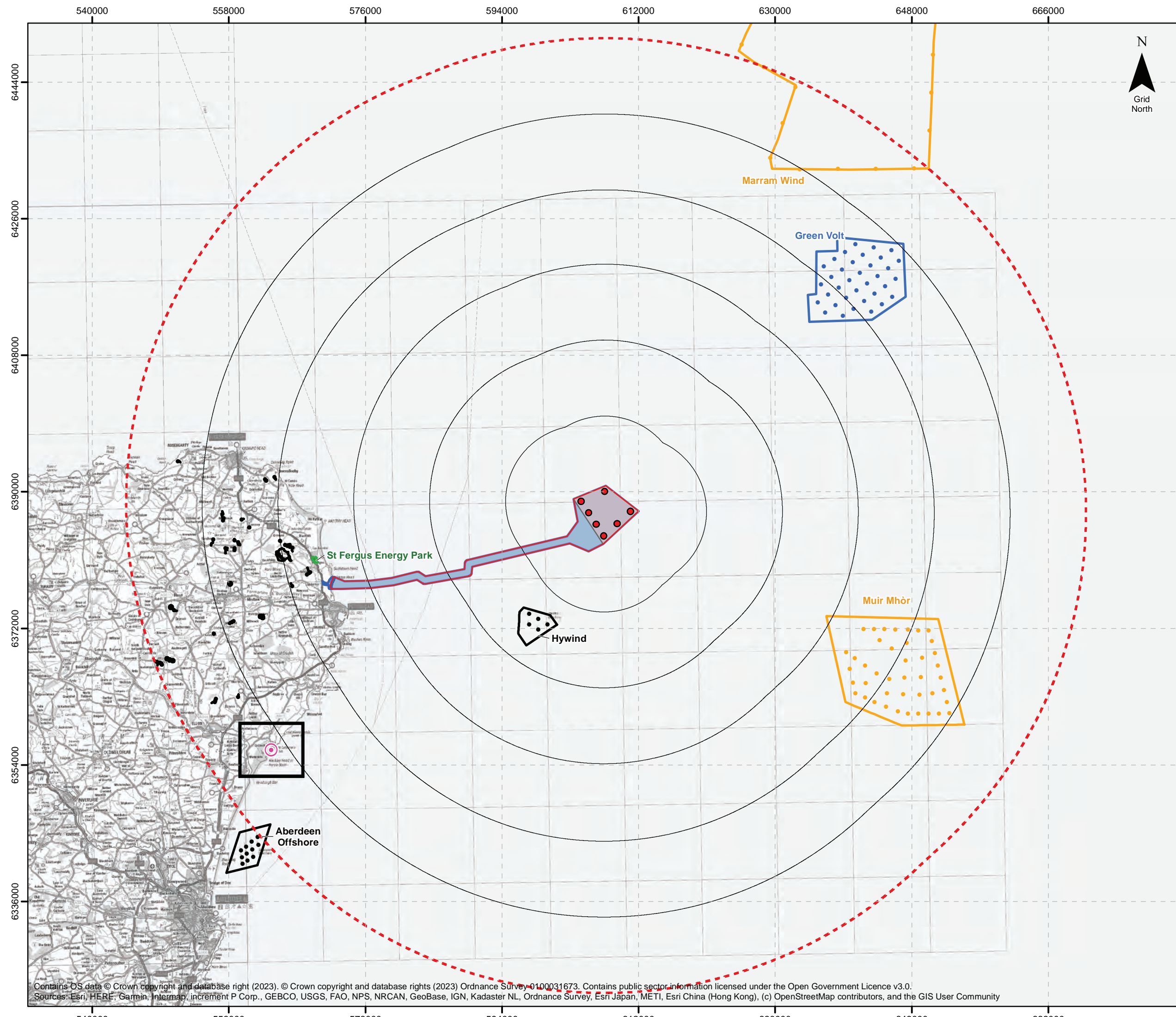
View flat at a comfortable arm's length

**OS reference:** 407805 E 833428 N  
**Eye level:** 48.7 mAOD  
**Direction of view:** 59°  
**Nearest turbine:** 45.58 km

**Horizontal field of view:** 53.5° (planar projection)  
**Principal distance:** 812.5 mm  
**Paper size:** 841 x 297 mm (half A1)  
**Correct printed image size:** 820 x 260 mm

**Camera:** Canon EOS 6D  
**Lens:** Canon EF 50mm f/1.4  
**Camera height:** 1.5 m  
**Date and time:** 08.06.2023 17:29

**Figure 16.27f**  
**Viewpoint 14: Cruden Bay (East Sandend)**  
**Salamander**  
© Crown copyright. All rights reserved (2023). Licence number 0100031673



## Salamander

### Figure 16.28a

#### Viewpoint 15 - Forvie National Nature Reserve

**Legend**

- WTG Location
- Offshore Development Area
- Offshore Array Area
- Offshore Export Cable Corridor
- Indicative Onshore Development Area
- 10km Radii
- 60km Study Area
- Viewpoint

**Cumulative Boundary Status**

- Appeal / Application
- Consented
- Operational
- Scoping

**Cumulative Turbine Status**

- Operational
- Consented
- Application
- Scoping

**Cumulative Turbine Status**

- Panorama with Wireline (90°HFOV)
- Photomontage and Wireline (53.5°HFOV)

**Blade Tip ZTV**

No. of Blade Tips Theoretically Visible

- 1 - 2
- 3 - 4
- 5 - 6
- 7

Coordinate System: WGS 1984 UTM Zone 30N  
Vertical Datum : ODN      Scale @ A3 : 460,000

0 5 10 20 Kilometers  
0 2.5 5 10 Miles

Rev	Description	Date
00	FINAL	04/03/2024
----	----	----

Doc. Title : Viewpoint Plan  
Viewpoint 15: Forvie National Nature Reserve  
Doc. No : SWF01OP1016  
Created by : NL  
Checked by : SM  
Approved by : SM

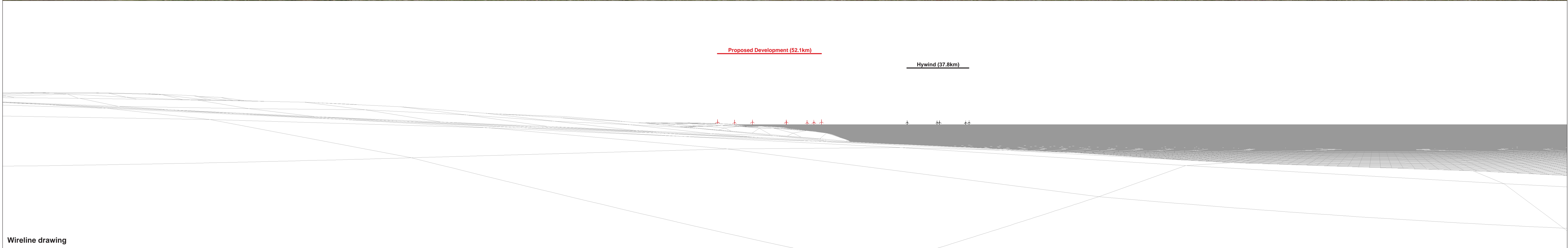
Powered by Global Wind  
Simply Blue Group

Contains OS data © Crown copyright and database right (2023). © Crown copyright and database rights (2023) Ordnance Survey 0100031673. Contains public sector information licensed under the Open Government Licence v3.0. Sources: Esri, HERE, Garmin, Intelmap, increment P Corp., GEBCO, USGS, FAO, NPS, NRCAN, GeoBase, IGN, Kadaster NL, Ordnance Survey, Esri Japan, METI, Esri China (Hong Kong), (c) OpenStreetMap contributors, and the GIS User Community



Baseline photograph

This image provides landscape and visual context only



Wireline drawing

OS reference: 403519 E 827974 N  
 Eye level: 41.5 mAOD  
 Direction of view: 56°  
 Nearest turbine: 52.10 km

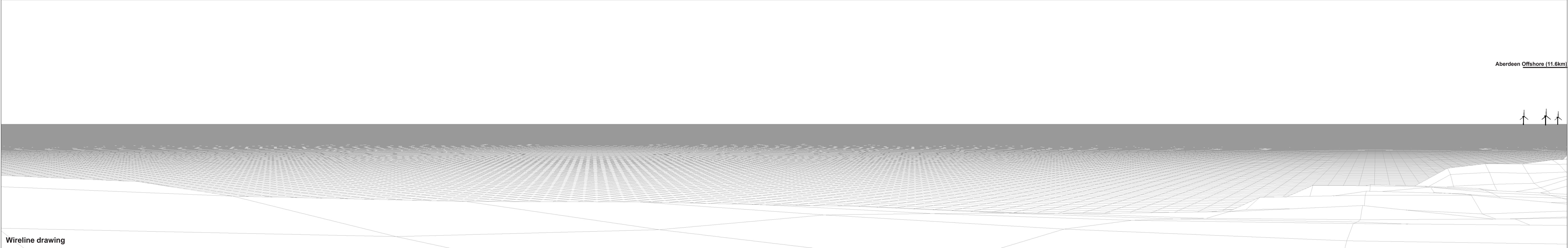
Horizontal field of view: 90° (cylindrical projection)  
 Principal distance: 522 mm  
 Paper size: 841 x 297 mm (half A1)  
 Correct printed image size: 820 x 130 mm

Camera: Canon EOS 6D  
 Lens: Canon EF 50mm f/1.5  
 Camera height: 2.5 m  
 Date and time: 29.06.2023 14:00



Baseline photograph

This image provides landscape and visual context only



Aberdeen Offshore (11.6km)

Wireline drawing

<b>OS reference:</b> 403519 E 827974 N	<b>Horizontal field of view:</b> 90° (cylindrical projection)	<b>Camera:</b> Canon EOS 6D
<b>Eye level:</b> 41.5 mAOD	<b>Principal distance:</b> 522 mm	<b>Lens:</b> Canon EF 50mm f/1.5
<b>Direction of view:</b> 146°	<b>Paper size:</b> 841 x 297 mm (half A1)	<b>Camera height:</b> 2.5 m
<b>Nearest turbine:</b> 52.10 km	<b>Correct printed image size:</b> 820 x 130 mm	<b>Date and time:</b> 29.06.2023 14:00

**Figure 16.28c**  
**Viewpoint 15: Forvie National Nature Reserve**  
**Salamander**

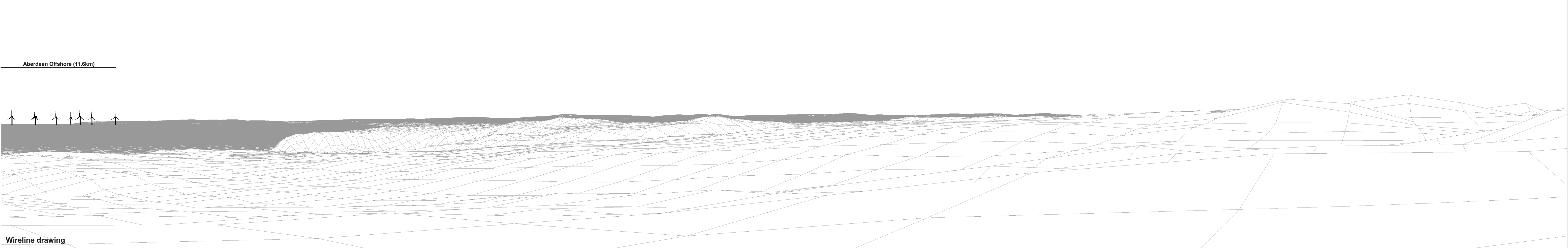
© Crown copyright. All rights reserved (2023). Licence number 0100031673





Baseline photograph

This image provides landscape and visual context only



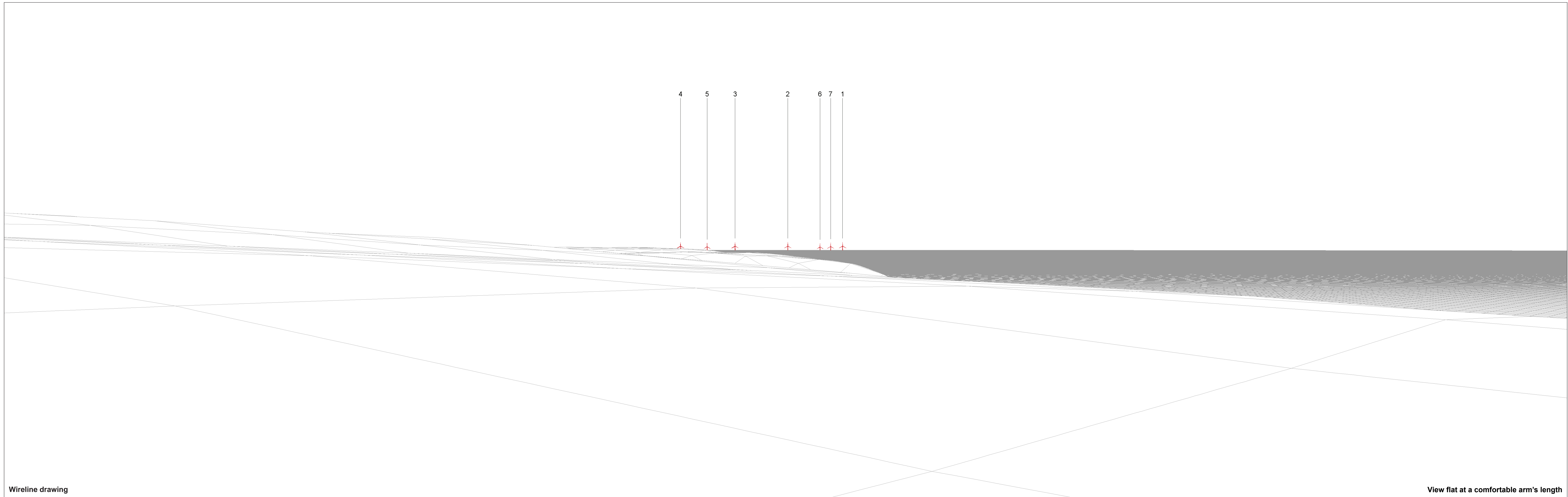
Aberdeen Offshore (11.6km)

Wireline drawing

<b>OS reference:</b> 403519 E 827974 N	<b>Horizontal field of view:</b> 90° (cylindrical projection)	<b>Camera:</b> Canon EOS 6D
<b>Eye level:</b> 41.5 mAOD	<b>Principal distance:</b> 522 mm	<b>Lens:</b> Canon EF 50mm f/1.5
<b>Direction of view:</b> 236°	<b>Paper size:</b> 841 x 297 mm (half A1)	<b>Camera height:</b> 2.5 m
<b>Nearest turbine:</b> 52.10 km	<b>Correct printed image size:</b> 820 x 130 mm	<b>Date and time:</b> 29.06.2023 14:00

Figure 16.28d  
Viewpoint 15: Forvie National Nature Reserve  
Salamander

© Crown copyright, All rights reserved (2023). Licence number 0100031673



Wireline drawing

View flat at a comfortable arm's length

**OS reference:** 403519 E 827974 N  
**Eye level:** 41.5 mAOD  
**Direction of view:** 56°  
**Nearest turbine:** 52.10 km

**Horizontal field of view:** 53.5° (planar projection)  
**Principal distance:** 812.5 mm  
**Paper size:** 841 x 297 mm (half A1)  
**Correct printed image size:** 820 x 260 mm

**Camera:** Canon EOS 6D  
**Lens:** Canon EF 50mm f/1.5  
**Camera height:** 2.5 m  
**Date and time:** 29.06.2023 14:00

**Figure 16.28e**  
**Viewpoint 15: Forvie National Nature Reserve**  
**Salamander**  
© Crown copyright, All rights reserved (2023). Licence number 0100031673



Photomontage: Proposed Development

View flat at a comfortable arm's length

<b>OS reference:</b> 403519 E 827974 N	<b>Horizontal field of view:</b> 53.5° (planar projection)	<b>Camera:</b> Canon EOS 6D
<b>Eye level:</b> 41.5 mAOD	<b>Principal distance:</b> 812.5 mm	<b>Lens:</b> Canon EF 50mm f/1.5
<b>Direction of view:</b> 56°	<b>Paper size:</b> 841 x 297 mm (half A1)	<b>Camera height:</b> 2.5 m
<b>Nearest turbine:</b> 52.10 km	<b>Correct printed image size:</b> 820 x 260 mm	<b>Date and time:</b> 29.06.2023 14:00

Figure 16.28f  
Viewpoint 15: Forvie National Nature Reserve  
Salamander  
© Crown copyright. All rights reserved (2023). Licence number 0100031673



Photomontage: Proposed Development

View flat at a comfortable arm's length

<b>OS reference:</b> 403519 E 827974 N	<b>Horizontal field of view:</b> 53.5° (planar projection)	<b>Camera:</b> Canon EOS 6D
<b>Eye level:</b> 41.5 mAOD	<b>Principal distance:</b> 812.5 mm	<b>Lens:</b> Canon EF 50mm f/1.5
<b>Direction of view:</b> 56°	<b>Paper size:</b> 841 x 297 mm (half A1)	<b>Camera height:</b> 2.5 m
<b>Nearest turbine:</b> 52.10 km	<b>Correct printed image size:</b> 820 x 260 mm	<b>Date and time:</b> 29.06.2023 14:00

Figure 16.28g  
Viewpoint 15: Forvie National Nature Reserve  
Salamander  
© Crown copyright. All rights reserved (2023). Licence number 0100031673