



Scotland England Green Link 1 / Eastern Link 1 - Marine Scheme

Environmental Appraisal Report
Volume 3

Appendix 14.1 - Report on Baseline Consultation with Fisheries Stakeholders

nationalgrid  **SP TRANSMISSION**

National Grid Electricity Transmission and Scottish Power Transmission

May 2022



**Scotland to England Green Link 1/Eastern Link 1 Project
Marine Scheme
Report on Baseline Consultation with Fisheries
Stakeholders**

1.0 Introduction

This report summarises the baseline consultation undertaken with fisheries stakeholders by Brown & May Marine Ltd (BMM) on behalf of the Scotland to England Green Link (SEGL) 1/ Eastern Link (EL) 1 Project (hereafter referred to as the “Project”). The purpose of the consultation was to collect information on fishing activities and identify the key concerns of the fishing industry in respect of the Project. This was undertaken with a view to help inform the commercial fisheries chapter of the non-statutory environmental appraisal.

2.0 Consultation Process

A summary of the consultation undertaken with Scottish and English fisheries stakeholders is provided in Table 2.1 and Table 2.2, respectively.

As shown, consultation was carried out with national and regional organisations via Teams meetings. In addition, a sample of local fisheries stakeholders were consulted face-to-face at local ports using a questionnaire as the basis for consultation (Appendix 1). Where willing, fisheries stakeholders who were unable to meet in person were contacted by BMM via email/phone and submitted questionnaires electronically.

As shown in Table 2.1 and Table 2.2, the majority of local fisheries stakeholders contacted provided information on their activities.

Completed questionnaires were returned with information on the activities of a total of 67 fishing vessels (34 based at local Scottish ports and 33 based at local English ports).

Table 2.1 Consultation undertaken with Scottish Fisheries Stakeholders

Meeting Date	Format	Organisation/Association/Fishermen Consulted	Completed questionnaires returned?
2/11/2021	Teams call	Scottish Fishermen's Federation (SFF) and Scottish White Fish Producers Association (SWFPA)	n/a ¹
9/11/2021	Teams call	North & East Coast Regional Inshore Fisheries Group (N&EC RIFG)	
30/11/2021	Face-to-face meeting	Local fishermen based in Eyemouth	Yes
30/11/2021, 01/12/2021	Face-to-face meeting	Local fishermen based in Dunbar	Yes
	Email		Yes
30/11/2021	Face-to-face meeting	Local fishermen based in Cove	Yes
01/12/2021	Face-to-face meeting	Local representative based in Port Seton	Yes
	Email		Yes
03/12/2021	Face-to-face meeting	Local representative based in St Andrews	No
03/12/2021	Face-to-face meeting	Local representative based in Pittenweem	No
13/01/2022	Email	Local fisherman based in Burnmouth	Yes
07/02/2022	Post	Local fisherman based in St Abbs	Yes

¹ N/a applies to organisations which were not consulted via questionnaires

Table 2.2 Consultation undertaken with English Fisheries Stakeholders

Meeting Date	Format	Organisation/Association/Fishermen Consulted	Completed questionnaires returned?
4/11/2021	Teams call	Northumberland Inshore Fisheries Conservation Authority (NIFCA)	n/a
11/11/2021	Teams call	National Federation of Fisherman's Organisations (NFFO)	
1/12/2021	Teams call	North Eastern Inshore Fisheries Conservation Authority (NEIFCA)	
29/11/2021	Face-to-face meeting	Local fisherman based in Berwick Upon Tweed	Yes
29/11/2021, 10/12/2021	Face-to-face meeting	Local fishermen based in Holy Island	Yes
29/11/2021	Face-to-face meeting	Local fishermen based in Seahouses	Yes
30/11/2021	Face-to-face meeting	Local fishermen based in Beadnell	Yes
30/11/2021	-	Craster visited, no fishermen in port	No
30/11/2021	Face-to-face meeting	Local fishermen based in Amble	Yes
30/11/2021	-	Newbiggin-by-the-Sea visited, no fishermen in port	No
30/11/2021	Face-to-face meeting	Local fishermen based in Blyth	Yes
01/12/2021	Face-to-face meeting	Local fishermen based in North Shields	Yes
01/12/2021, 10/12/2021	Face-to-face meeting	Sunderland visited on 01/12/2021, no fishermen in port. Revisited on 10/12/2021 and local fishermen consulted.	Yes
01/12/2021	Face-to-face meeting	Local fishermen based in Seaham	Yes
10/12/2021	Face-to-face meeting	Local fishermen based in Hartlepool	Yes

3.0 Information Gathered During Consultation

Information from a total of 67 vessels was collected during consultation (All the data gathered was anonymised. Information on fishing grounds (i.e. grounds drawn on paper charts and gear locations/towing tracks from plotter shots) was georeferenced where possible, and amalgamated separately by fishing method for Scottish and English vessels.

Table 3.1).

All the data gathered was anonymised. Information on fishing grounds (i.e. grounds drawn on paper charts and gear locations/towing tracks from plotter shots) was georeferenced where possible, and amalgamated separately by fishing method for Scottish and English vessels.

Table 3.1 Number of Questionnaires by Port and Method

Scotland/England	Home Port	No. Potters/Creelers	No. Trawlers
Scotland	Burnmouth	4	-
	Cove	3	-
	Dunbar	17	6
	Eyemouth	-	2
	Port Seton	-	1
	St Abbs	1	
England	Amble	3	2
	Beadnell	1	-
	Berwick	1	-
	Blyth	2	2
	Hartlepool	-	4
	Holy Island	3	-
	North Shields	2	6
	Seahouses	3	-
	Sunderland	3	-
Total		43	24

3.1.1 Potting/Creeling

A total of 43 vessels that engage in potting/creeling as their primary fishing activity in areas of relevance to the Project completed consultation questionnaires (25 Scottish, 18 English). A summary of the information provided by Scottish and English vessels is outlined in the sections below.

Scottish Potters/Creelers

A total of 25 Scottish creelers returned completed questionnaires. As shown in Table 3.2, vessel length ranged from 4.8 m to 11.98 m and the duration of fishing trips was generally reported to be between 10 – 12 hours. Steaming distances typically ranged between few hundred metres to 12- 15 nautical miles (nm) (up to 30-50 nm in few cases).

The primary target species identified by the Scottish creelers/potters consulted with were brown crab, lobster and velvet crab.

The number of pots used was reported to range generally from a minimum of 105 to a maximum of 1,200, with some vessels working over 2,500 pots. Fleet numbers were generally between 5-10 and 40, with some vessels working up to 85 fleets.

The majority of vessels indicated that they work all year round. Three vessels, however, noted their main season runs over the spring, summer and autumn months (between March and December).

The distribution of potting/creeling activity by the Scottish vessels consulted in areas of relevance to the Project is illustrated in Figure 3.1. As shown, their potting/creeling grounds concentrate predominantly within the 6 nm limit, although some of the fishing grounds reported extend further offshore.

The grounds reported by Scottish vessels primarily overlap with the section of the Project that is located within Scottish waters, however some vessels extend their activity to adjacent English waters, primarily within International Council for the Exploration of the Sea (ICES) rectangle 40E8.

Table 3.2 Information gathered from Scottish Potters/ Creelers

Vessel Length (m)	Average No. Days Fishing Per Year	Typical Fishing Trip Duration	Steamed (nm)	Distance	Fishing Gear	Seasonality	Target species
8.89	365	8 - 10 hours	20 - 40		40 fleets, 30 per fleet	All year	Crab, lobster
5.6	250	8 hours	12		13 fleets, 15 pots per fleet	All year	Crab, lobster
11.98	240	14 hours	3 to 50 nm		85 fleets, between 30 and 50 pots per fleet	All year	Crab, lobster, velvets
11.98	240	14 hours	3 to 50 nm		85 fleets, between 30 and 50 pots per fleet	All year	Crab, lobster, velvets
6.6	200	10-12 hours	4		25 fleets, 20 pots per fleet	All year	Crab, lobster, velvets
4.8	200	6-8 hours	2		20 fleets, 8 – 12 pots per fleet	All year	Crab, lobster, velvets
7.9	220	10-12 hours	10		25 fleets, 25 pots per fleet	All year	Crab, lobster, velvets
7.9	200	10-12 hours	100 m to 4 nm		40 fleets, 25pots per fleet	All year	Crab, lobster
9.18	300	10 hours	14 - 15		14 fleets, 25 pots per fleet	All year	Crab, lobster
9.92	200	8-10 hours	100m to 2.5 nm		5 - 10 fleets, 35pots per fleet	All year, further offshore in the winter	Crab, lobster, velvets
8.3	200	10hours	3.5 to 12 nm		25 fleets, 25 pots per fleet	All year	Crab, lobster, velvets
7.7	200	10-12 hours	4		24 fleets, 20 pots per fleet	All year	Crab, lobster, velvets
7.01	200	10-12 hours	4		24 fleets, 20 pots per fleet	All year	Crab, lobster, velvets
8.14	200	10-12 hours	3		26 fleets, 20 pots per fleet	All year	Crab, lobster, velvets
9.98	200	10-12 hours	4		27 fleets, 20 pots per fleet	All year	Crab, lobster, velvets
5.4	200	10-12 hours	100 m to 1.5 nm		20 fleets, 15 pots per fleet	March - December	Crab, lobster
8.41	365	12 hours	4		40 fleets, 20 pots per fleet	All year	Crab, lobster, velvets

Vessel Length (m)	Average No. Days Fishing Per Year	Typical Fishing Trip Duration	Steamed (nm)	Distance	Fishing Gear	Seasonality	Target species
7.9	200	10-12 hours	100 m to 2.5 nm		30 fleets, 30 pots per fleet. Capabilities to trawl (single-rig) if required.	All year, further offshore in the winter	Crab, lobster, velvets
5.55	213	12 hours	1		20 fleets, 15 pots per fleet	May to November	Crab, lobster, velvets
8.12	250	8 - 10 hours	-		26 fleets, 20 - 25 pots per fleet	All year	Crab, lobster, velvets
8.58	365	10-12 hours	20 - 30		600 pots	All year	Crab, lobster
8.01	200	10-12 hours	4		26 fleets, 25 pots per fleet	All year	Crab, lobster, velvets
7.38	200	10-12 hours	100 m to 4 nm		30 fleets, 25 pots per fleet	All year	Crab, lobster
6.9	200	6-8 hours	3.5 to 12nm		7 fleets, 15 pots per fleet	April to October, possible December (weather permitting)	Crab, lobster, velvets
8.05	220 - 280	8 hours	20 nm		30 pots per fleet Line fishing	All year	Lobster and Crab Mackerel

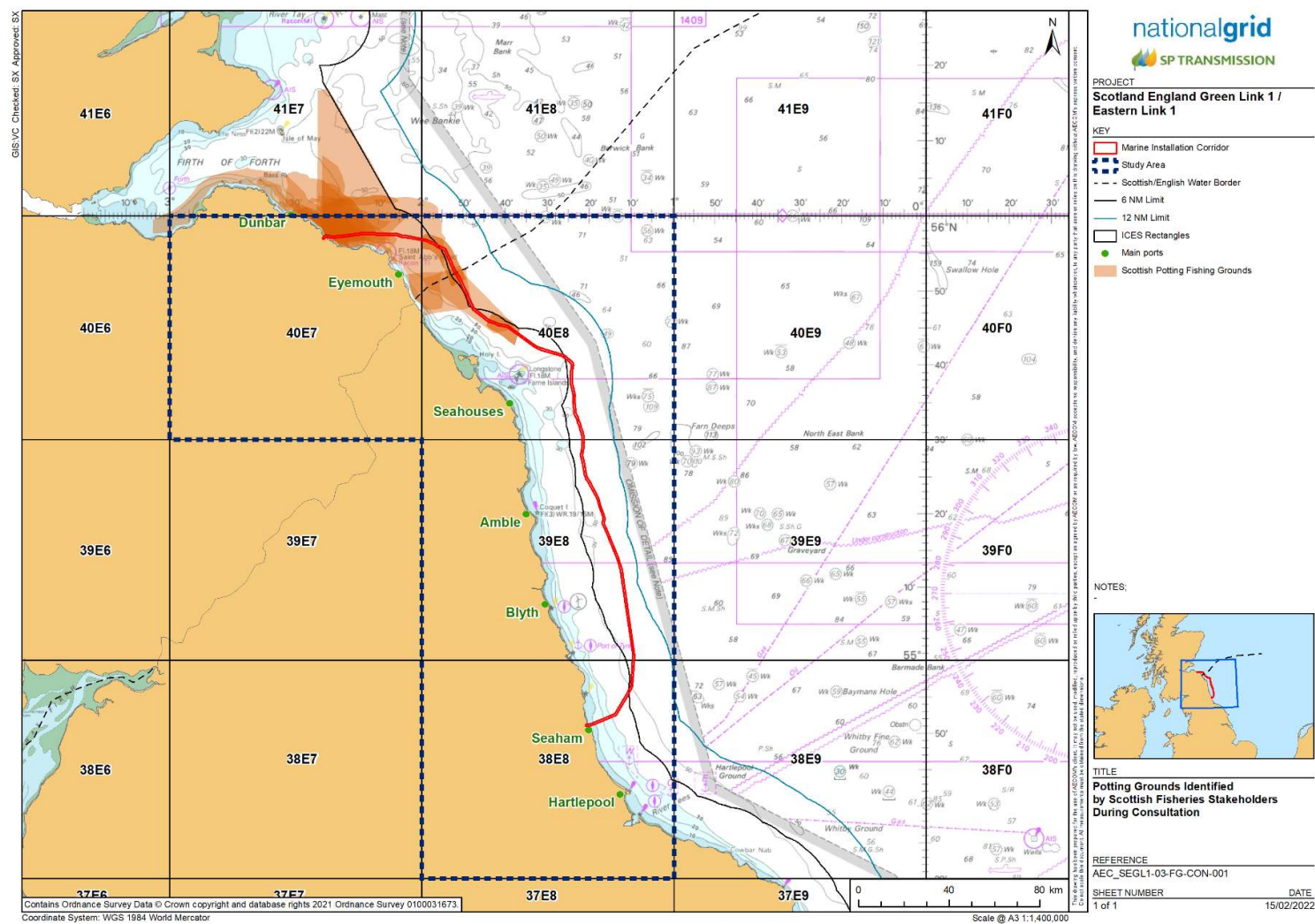


Figure 3.1 Potting/creeling grounds identified by Scottish fisheries stakeholders (BMM, 2022) (darker colours shown where grounds from various vessels overlap)

English Vessels

Information for a total of 18 English potters/creelers was collected during consultation. As shown in Table 3.3, vessel length ranged from 6.1 m to 11.5 m, with just six vessels above 10 m in length. The duration of a typical fishing trip was reported to be 10 – 12 hours long, with the shortest trip being six hours, and the longest ranging from 16 to 18 hours.

The primary target species identified by English potters/creelers are brown crab, lobster and velvet crab. Few vessels, however, reported to also target *Nephrops* using pots either as their main target species or as a secondary catch. In addition, four vessels reported using additional methods to potting at times (predominantly netting for fish and trawling for fish and *Nephrops*).

The number of pots used ranged from a minimum of 160 pots to a maximum of 800 pots, with fleet numbers between 12 and 40 by vessel. Three vessels indicated that they use a significantly higher number of pots in the summer months compared to winter.

The majority of English potters/creelers reported to engage in fishing activities all year round. Some vessels indicated that during the winter their activity moves further offshore, similar to the pattern reported by some Scottish vessels.

An indication of the distribution of the potting/creeling grounds of the English vessels consulted in areas of relevance to the Project is illustrated in Figure 3.2. As shown, for the most part, they concentrate within the 6 nm limit, although some grounds extend out to 12 nm and further offshore. The majority of grounds are within English waters, although some grounds reach adjacent areas in Scottish waters. Potting/creeling grounds of various vessels overlap with a section of the Project that runs through ICES rectangle 40E8, in the area around the Farne Islands. In addition, there is also overlap between potting/creeling grounds and various other discrete sections of the Project, including around the landfall.

Table 3.3 Information gathered from English Potters/ Creelers

Vessel Length (m)	Average No. Days Fishing Per Year	Typical Fishing Trip Duration	Steamed Distance (nm)	Fishing Gear	Seasonality	Target species
6.63	150	8 hours	6	Total 800, 20 fleets, 25 pots per fleet	Offshore in the winter	Crab, lobster and velvets
9.81	200	12 hours	10 - 15	800 pots total, 30 fleets, 38 pots per fleet across both boats	Winter months out to edge of Farn Deep	<i>Nephrops</i>
9.98	200	12 hours	10 - 15	800 pots total, 30 fleets, 38 pots per fleet across both boats	Winter months out to edge of Farn Deep	<i>Nephrops</i>
8.24	100	6 hrs	3	450 pots in summer, 300 in winter	All year	Crab and lobster
9	250	12	12	20 - 30 per fleet, 500 total. Tangle nets for turbot/monkfish always in water, checked each trip.	All year	Turbot, monkfish, crab and lobster
9.51	-	-	-	Pots	Day fishing November	<i>Nephrops</i>
6.1	-	-	-	Pots	Day fishing November	<i>Nephrops</i>
9.93	175	16 - 18 hours	-	Total 360 pots, 30 per fleet	All year	<i>Nephrops</i> , small amount of fish, crab and lobster
9.83	200	6-12 hours	6 - 7	300 pots in winter, 500 in summer - 30 per fleet. Gill netting for salmon	Summer close inshore for lobster, winter deeper water. Salmon April/May at Pier	Crab, lobster, velvets and salmon
11.52	250	10 - 12 hours	3 - 25	110 fleets shared between vessels, 25 - 30 pots per fleet	Nearshore in summer. Some pots in shelter of Farne islands. During winter period venture to Berwick Bank.	Crab and lobster (small amount of <i>Nephrops</i>)
9.83	250	10 - 12 hours	3 - 25	110 fleets shared between vessels, 25 - 30 pots per fleet	-	Crab and lobster (small amount of <i>Nephrops</i>)

Vessel Length (m)	Average No. Days Fishing Per Year	Typical Fishing Trip Duration	Steamed Distance (nm)	Fishing Gear	Seasonality	Target species
10.4	180	10-12 hours	12	Parlour pots, 18 fleets, 40 pots per fleet	All year. Offshore traditionally in winter for crabs however catching lobster in areas which were normally crab grounds	Crab, lobster and velvets
6.52	150	6 hours	4	250 pots winter, 400 - 500 summer. 35 fleets	Grounds inshore in summer, out to 4 nm all year. 5 weeks no fishing	Crab, lobster and velvets occasionally
9.9	260	8-9 hours	20	800 total, 22 - 40 pots per fleet	All year	Crab and lobster
10.4	260	8 hours	20	800 total, 20 fleets, 40 pots	All year	Crab and lobster
10.5	240	12 hours	30	400 pots total, 40 pots per fleet, 1/2 mile between buoys	All year	Crab and lobster
11	240	12 hours	25-30	40 fleets, 400 pots total	All year	Crab and lobster
11	240	12 hours	25-30	40 fleets, 400 pots total	All year	Crab and lobster

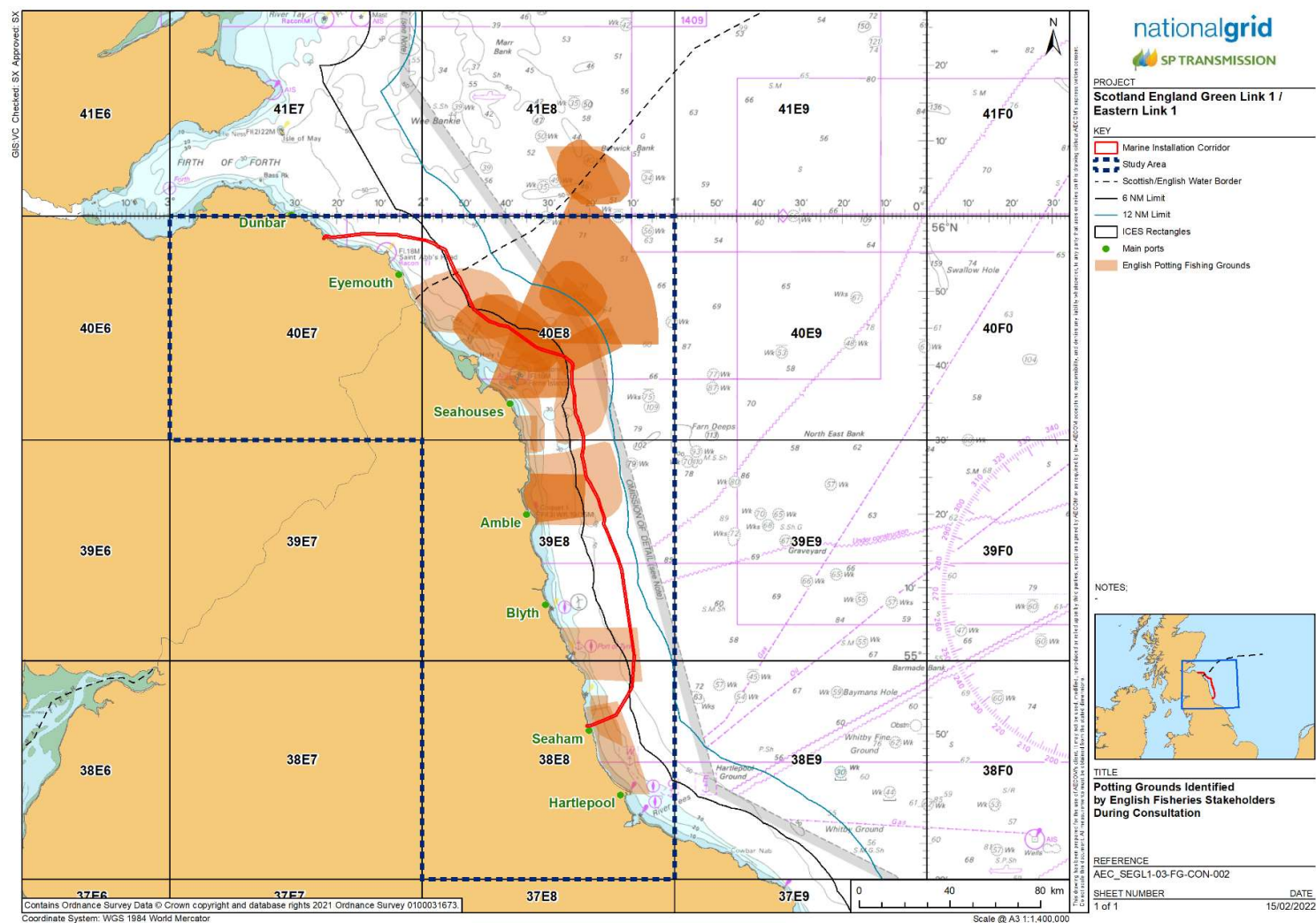


Figure 3.2 Potting grounds identified by English fisheries stakeholders (BMM, 2022) (darker colours shown where grounds from various vessels overlap)

3.2 Demersal Trawling

24 of the vessels consulted (nine Scottish, 15 English) use demersal trawling as their primary fishing method. A summary of the information gathered during consultation from both Scottish and English demersal trawlers is provided in the following sections.

Scottish Vessels

Nine of the 24 demersal trawlers consulted were based in local Scottish ports. The length of these vessels ranged from 10.8 to 17.9 m.

The fishing trip durations reported ranged from 12 - 14 hours to up to 4 days and steamed distances ranged between two and 60 nm from shore.

The primary target species identified by the Scottish demersal trawlers consulted was *Nephrops*. The majority of vessels, however, noted that they also target squid.

The Scottish vessels consulted predominantly use twin-rigged trawls to target *Nephrops*, and switch to single-rig trawls to target squid. However, few of the Scottish trawlers consulted, were single-rig only.

With regard to seasonality, in general terms, vessels engaged in the *Nephrops* fishery reported activity all year round. Few vessels indicated that their main season in the Firth of Forth runs from May to July whilst fishing in grounds off Dunbar and in the Farn Deep is normally undertaken over the autumn/winter (September to January and October to January, respectively). Scottish trawlers that reported to target squid indicated that the main season for this species runs over late summer and through the autumn (August to December).

An indication of the distribution of trawling grounds targeted by Scottish vessels in areas of relevance to the Project is illustrated in Figure 3.3 based on information provided by fishermen during consultation (from plotter shots and/or grounds drawn on paper charts).

The majority of Scottish demersal trawlers consulted predominantly concentrate their activity within the Firth of Forth, off Dunbar and down to Holy Island. In these areas they generally work grounds within the 12 nm limit. Vessels that also fish for squid in areas of relevance to the Project, generally target this species in grounds located close to shore (normally in nearshore areas within the 6 nm limit). As shown in Figure 3.3, the majority of the section of the Project that is located between the Scottish landfall and Holy Island overlaps with these grounds.

Additionally, some Scottish vessels, also target *Nephrops* in the Farn Deep grounds, including in areas which overlap with the Project within the grounds (Figure 3.3).

Table 3.4 Information Gathered from Scottish Demersal Trawlers

Vessel Length (m)	Average No. Days Fishing/Year	Typical Fishing Trip Duration	Steamed Distance (nm)	Fishing Gear	Seasonality	Target Species
13.1	4-5 days/week	14 hours	4 -15	Twin-rig trawling for <i>Nephrops</i>	<i>Nephrops</i> all year Squid September- November	<i>Nephrops</i> , squid
12.2	200	24 - 36 hours	2-50	Single-rig trawling	All year round Firth of Forth May to July Farn Deeps October to January Dunbar September to January. Squid – August to December	<i>Nephrops</i> , squid
11.58	4-5 days/week	14 hours	4 - 15	Twin-rig trawling for <i>Nephrops</i> , single-rig trawling for squid	<i>Nephrops</i> all year Squid September -November	<i>Nephrops</i> , squid
11	200	24 - 36 hours	2-50	Twin-rig trawling	All year round Firth of Forth May to July. Farn Deeps October to January. Dunbar September to January.	<i>Nephrops</i> , squid

Vessel Length (m)	Average No. Days Fishing/Year	Typical Fishing Trip Duration	Steamed Distance (nm)	Fishing Gear	Seasonality	Target Species
					Squid – August to December	
11.9	200	24 - 36 hours	2-50	Twin-rig trawling	<p>All year round.</p> <p>Firth of Forth May to July. Farn Deep's October to January. Dunbar September to January.</p> <p>Squid – August to December</p>	<i>Nephrops</i> , squid
10.8	200	24 - 36 hours	2-50	Single-rig trawling	<p>All year round.</p> <p>Firth of Forth May to July. Farn Deep's October to January. Dunbar September to January.</p> <p>Squid – August to December</p>	<i>Nephrops</i> , squid
17.95	180	1-4 days	2-60	Twin-rig trawling, with the option to single-rig (used inside 12 nm off North Shields)	All year. Squid in August - October/Nov	<i>Nephrops</i> , squid

Vessel Length (m)	Average No. Days Fishing/Year	Typical Fishing Trip Duration	Steamed Distance (nm)	Fishing Gear	Seasonality	Target Species
14	200	1-2 days	5 - 20	Single rig-trawling Dredges (6 per side)	<p>All year-round fishing.</p> <p>Varies each year depending on catch levels from one fishery.</p> <p>2021 - 85% <i>Nephrops</i> fishing. 2020 - Mostly <i>Nephrops</i> due to markets with COVID. 2019 - 80% <i>Nephrops</i>. 2018 - 80% Scallops.</p> <p>2015 last time squid fishing, poor fishing in the last few years.</p>	<i>Nephrops</i> , scallops
12.2	250	12 – 14 hours		Single-rig trawling	All year	<i>Nephrops</i>

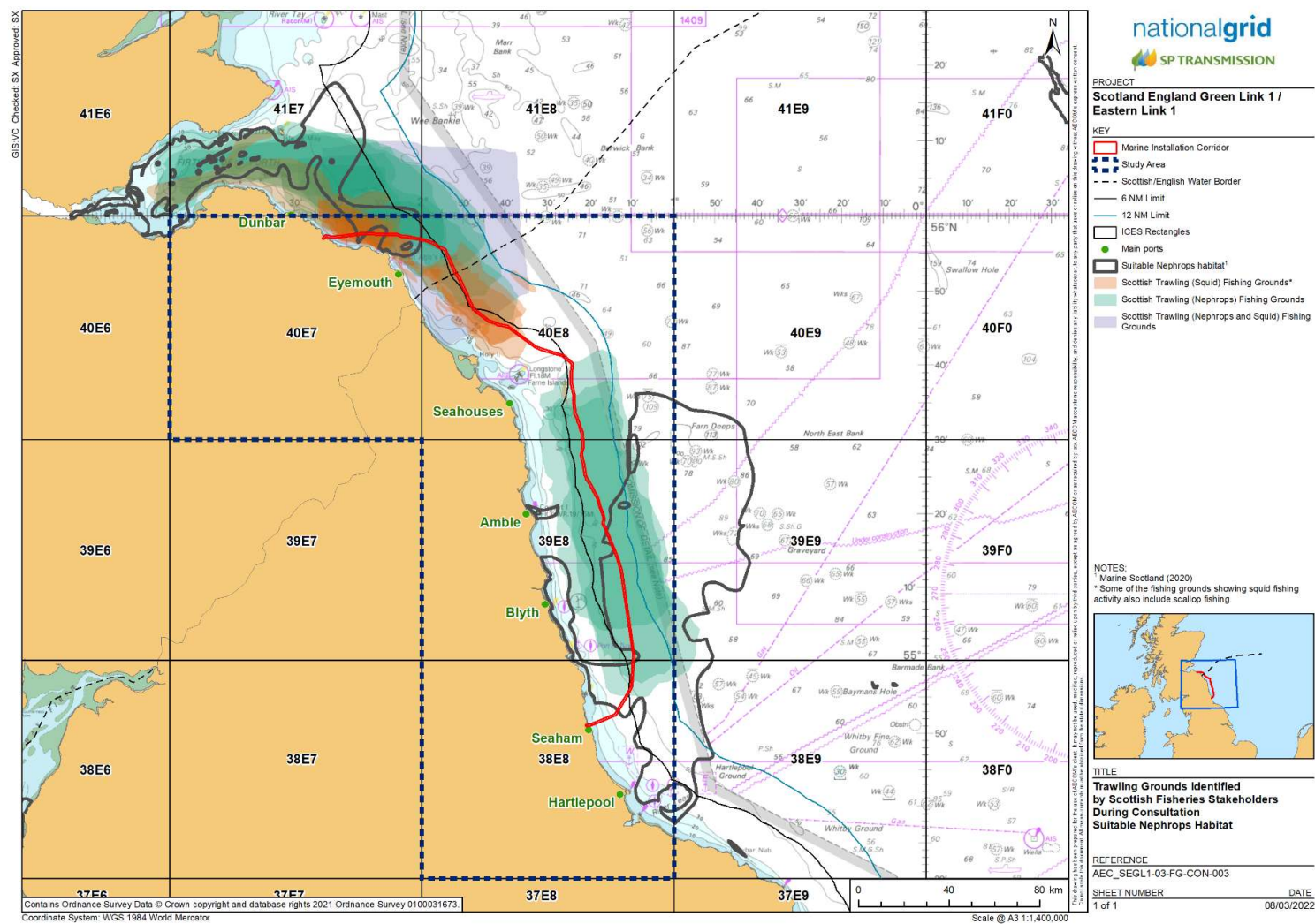


Figure 3.3 Trawling grounds identified by Scottish fisheries stakeholders (BMM, 2021) (darker colours shown where grounds from various vessels overlap)

English Vessels

15 of the 24 demersal trawlers consulted were based in local English ports. The length of these vessels ranged from 8.8 to 17.1 m.

Fishing trip durations generally ranged between 12 and 18 hours, although some vessels reported making fishing trips of up to four days duration. Steamed distances were identified to be anywhere between four and 30 nm.

Nephrops was reported as the primary target species of the English demersal trawlers consulted, with whitefish also being of importance to some vessels, particularly during times when *Nephrops* catches are low. The majority of these vessels use single rig trawls.

The English trawlers consulted reported to fish for *Nephrops* all year round. However, some vessels, identified late summer/autumn as their main fishing season.

In addition, some of the English trawlers consulted noted that they use pots as a secondary fishing method, often during the summer months, to target lobster and crab.

An indication of the distribution of demersal trawling grounds of English vessels in areas of relevance to the Project is illustrated in Figure 3.4, based on information provided by fishermen during consultation (from plotter shots and/or grounds drawn on paper charts). As shown, the English demersal trawlers consulted with target *Nephrops* in the Farn Deep grounds, including within the section of the Project that overlaps with these grounds.

Table 3.5 Information Gathered from English Demersal Trawlers

Scotland/ England	Home Port	Vessel Length (m)	Average No. Days Fishing/Year	Typical Fishing Trip Duration	Steamed Distance (nm)	Fishing Gear	Seasonality	Target Species
England	Amble	16.73	200 - 250	12 hours - 3 days	30	Twin-rig trawling, with the option to single-rig	-	<i>Nephrops</i> , whitefish
England	Amble	16.5	200 - 250	12 hours - 3 days	30	Twin-rig trawling, with the option to single-rig	Late summer was good this year (2021). Just day fishing in the winter. Normally poor catches in Farn Deep during the winter.	<i>Nephrops</i> , whitefish
England	Blyth	9.98	170-200	12 hours	-	Single- rig trawling	Autumn	<i>Nephrops</i> (whitefish if no <i>Nephrops</i>)
England	Blyth	9.95	170 - 200	12 hours	-	Single- rig trawling	Autumn	<i>Nephrops</i> (whitefish if no <i>Nephrops</i>)
England	Blyth	9.9	200	16 hours		Single- rig trawling	All year, summer catch really good. <i>Nephrops</i> soft shelled but good prices.	<i>Nephrops</i>
England	North Shields	17.07	200	3 days	4	Twin-rig trawling, with the option to single-rig	-	<i>Nephrops</i>

Scotland/ England	Home Port	Vessel Length (m)	Average No. Days Fishing/Year	Typical Fishing Trip Duration	Steamed Distance (nm)	Fishing Gear	Seasonality	Target Species
England	North Shields	8.85	200	16 - 18 hours	-	Single- rig trawling (20 pots)	-	<i>Nephrops</i> (crab and lobster in the summer)
England	North Shields	9.96	200	16 - 18 hours	-	Single- rig trawling	-	<i>Nephrops</i>
England	North Shields	14.99	200	16 - 18 hours	-	Single- rig trawling	-	<i>Nephrops</i>
England	North Shields	11.35	200	18 hours	20	Single- rig trawling	All year. <i>Nephrops</i> soft-shelled in summer.	<i>Nephrops</i>
England	North Shields	9.9	200	18 hours	20	Single- rig trawling	All year. <i>Nephrops</i> soft-shelled in summer.	<i>Nephrops</i>
England	Hartlepool	9.9	200	14 hours	25	Single- rig trawling	Potting in the summer. Trawling in the summer, autumn winter, (sometimes spring)	<i>Nephrops</i> , prime whitefish (crab and lobster in the summer)
England	Hartlepool	9.95	180	15 hours	25	Single- rig trawling (30 pots)	Potting in the summer. Trawling all year.	<i>Nephrops</i> (crab and lobster in the summer)
England	Hartlepool	9.99	160	15 hours	50	Single- rig trawling (25 pots)	All year	<i>Nephrops</i>

Scotland/ England	Home Port	Vessel Length (m)	Average No. Days Fishing/Year	Typical Fishing Trip Duration	Steamed Distance (nm)	Fishing Gear	Seasonality	Target Species
England	Hartlepool	9.6	180 - 200	12 hours	18	Single- rig trawling	All year	<i>Nephrops</i> , whitefish (cod, haddock, whiting, plaice, turbot, brill, lemon sole, dover sole), squid

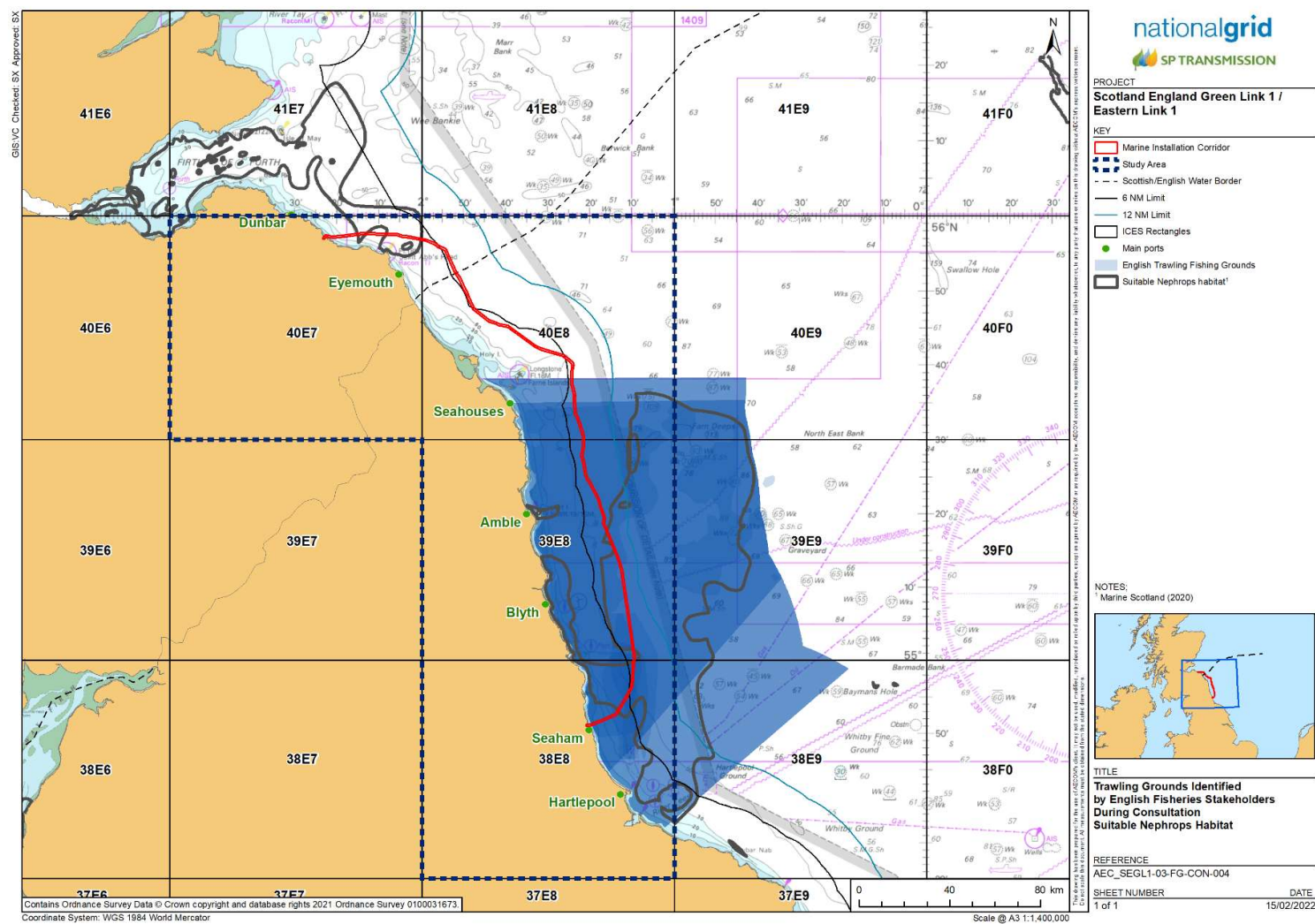


Figure 3.4 Trawling grounds identified by English fisheries stakeholders (BMM, 2021) (darker colours shown where grounds from various vessels overlap)

Appendix 1 – SEGL1/EL1 Consultation Questionnaire

COMMERCIAL FISHING ACTIVITIES - SEGL1/EL1 CONSULTATION

Skipper name	
Vessel name	
Reg. No	
Home port	
Fishing Association	

VESSEL DETAILS		
Length		metres
Beam		metres
Draft		metres
Vessel tonnage		tonnes
Main engine HP		HP

Average no. of days fishing per year		days
Days at sea allocation this year		days

Typical fishing trip duration		Hours/days
Typical distance steamed per fishing trip		n.miles
Average steaming speed		knots

<p>Principal fishing method(s) (potting, trawling etc.)</p> <p>If main method is potting, what type of pots are used?</p> <p>No. fleets?</p> <p>No. of pots per fleet?</p> <p>If scallops, how many dredges per side?</p> <p>If demersal trawling, twin or single rig?</p>	
<p>Seasonality of fishing method(s) (if multiple methods, seasons for each)</p>	
<p>Main species targeted by method(s)</p>	
<p>Main fishing areas by species, method & month (illustrate on chart provided or provide plotter shot)</p>	