

Legend

- Marine Scheme Boundary
- Shipping and Navigation Study Area
- Scotland Adjacent Waters Limit

Hydrographic Office
UK
CHART SERIES
NORTH SEA
CENTRAL SHEET
 DEPTHS IN METRES
 SCALE: 1:750 000 at lat 58°30'

Depths are in metres and are reduced to Chart Datum, which is generally the level of Lowest Astronomical Tide.

Vertical scale is in metres.

Additional marks: IALA Maritime Buoyage System (Red to port).

Projection: Mercator.

Note: Reference should be made to larger scale charts for the information.

OBSTACLES
 Obstructions and associated structures, including tanker moorings, platforms on pipelines, (U) lights, aircraft audible fog signals. Obstruction is prohibited all such structures.

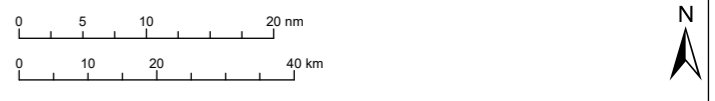
SUBMARINE CABLES AND PIPELINES
 Mariners should not anchor, trawl or engage in seabed operations in the vicinity of submarine cables and pipelines. Submarine cables support national infrastructure; damage to them may affect critical services and can result in serious consequences, as well as creating a potential hazard to mariners. Willful or neglectful damage to a cable may result in legal action. Pipelines are not always buried and their presence may be indicated by a symbol ++ is used for

04	-	-	-	-	-
03	-	-	-	-	-
02	-	-	-	-	-
01	27/04/2023	FOR ISSUE	DS	LC	SSE
Rev	Date	Status	Drwn	Chkd	Appd

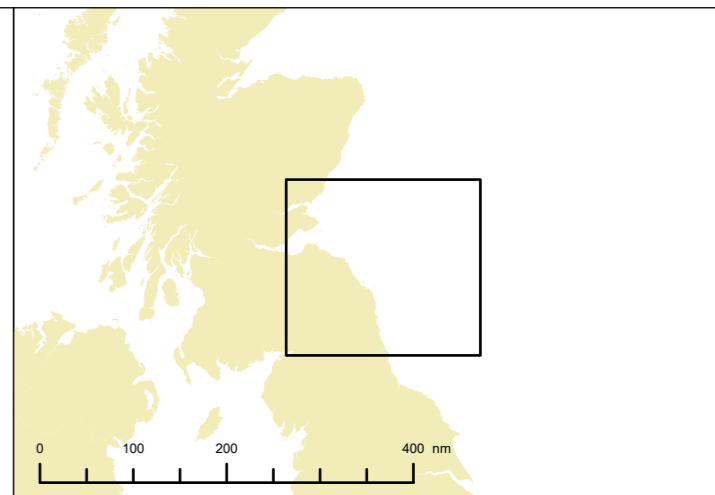
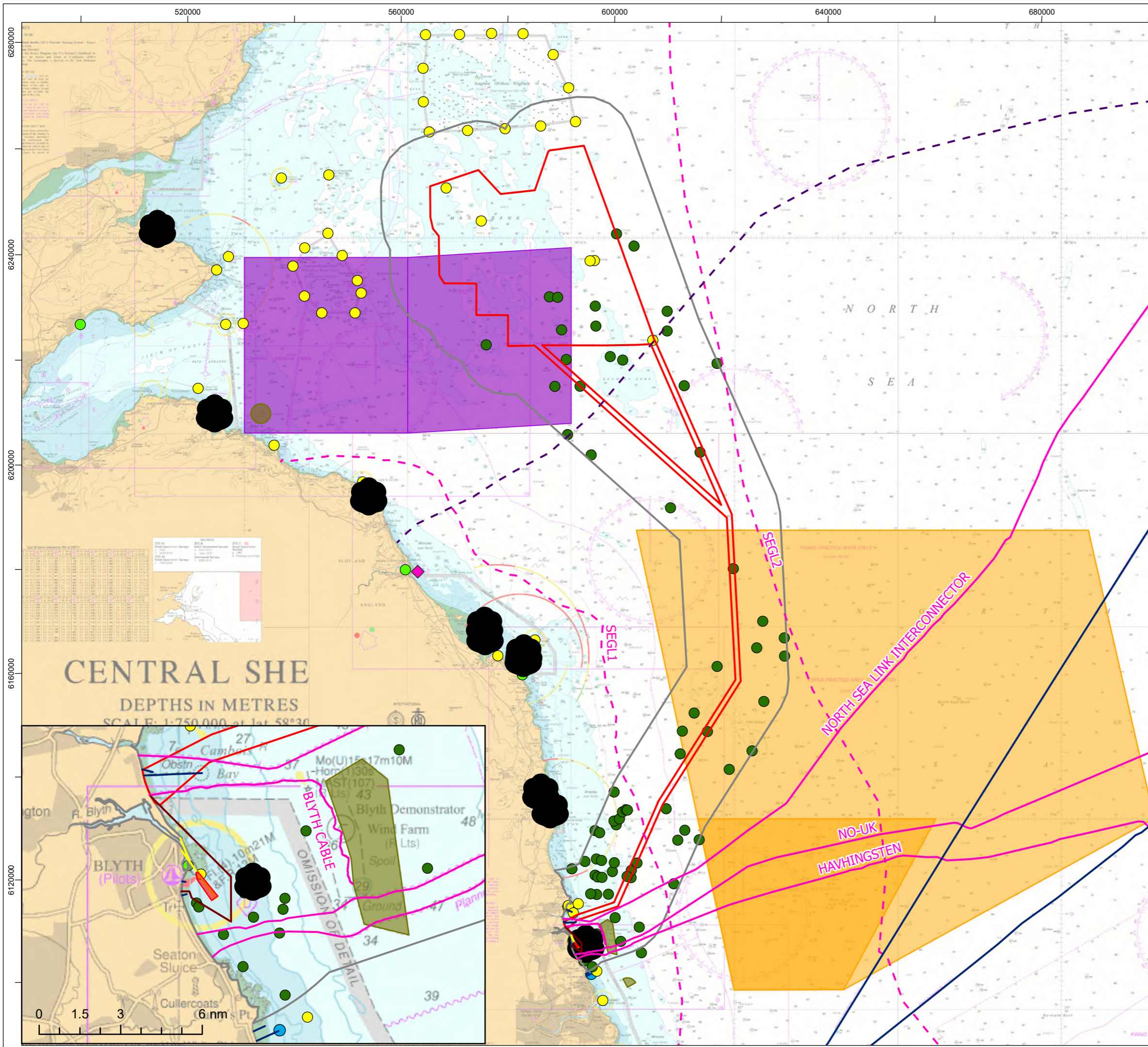


Project
CAMBOIS CONECTION

Title
Figure 13.1
Shipping and Navigation Study Area



© Copyright SSE 2022. Berwick Bank Wind Farm does not warrant that this document is definitive or free of error and does not accept liability for any loss caused or arising from reliance upon the information provided.			
Scale	Plot Size	Datum	Projection
1:1,100,000	A3	WGS84	World Mercator
Drawing Number	A100796_S01_13.1		Sheet No. 001 OF 001



Legend

Marine Scheme Boundary	Dredged Channel
Shipping and Navigation Study Area	Firing Practice Area
Aid to Navigation	Military Practice Area
Charted Wreck	Scotland Adjacent Waters Limit
Diffuser	Leading Line
Port/Harbour	Blyth Harbour Commission Seaward Limit
Pilot Boarding Area	Pipeline
Reported Anchorage	Subsea Cable
Spoil Ground	Planned
	Operational

© Crown copyright 2023. All rights reserved. EK001-542200

04					
03					
02					
01	27/04/2023	FOR ISSUE	DS	LC	SSE
Rev	Date	Status	Drwn	Chkd	Appd



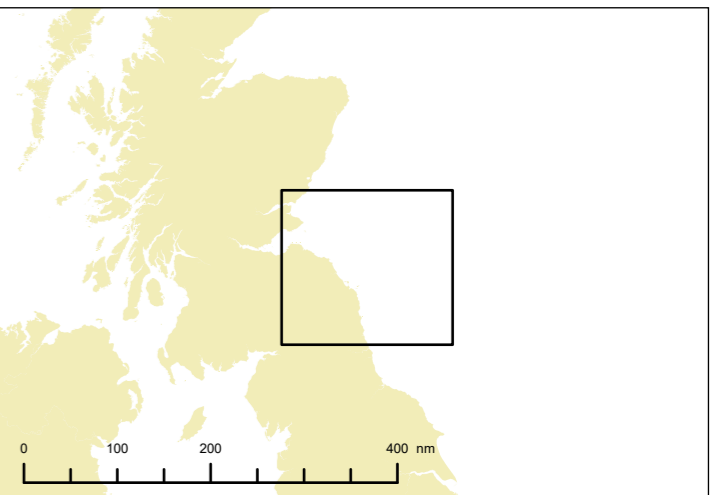
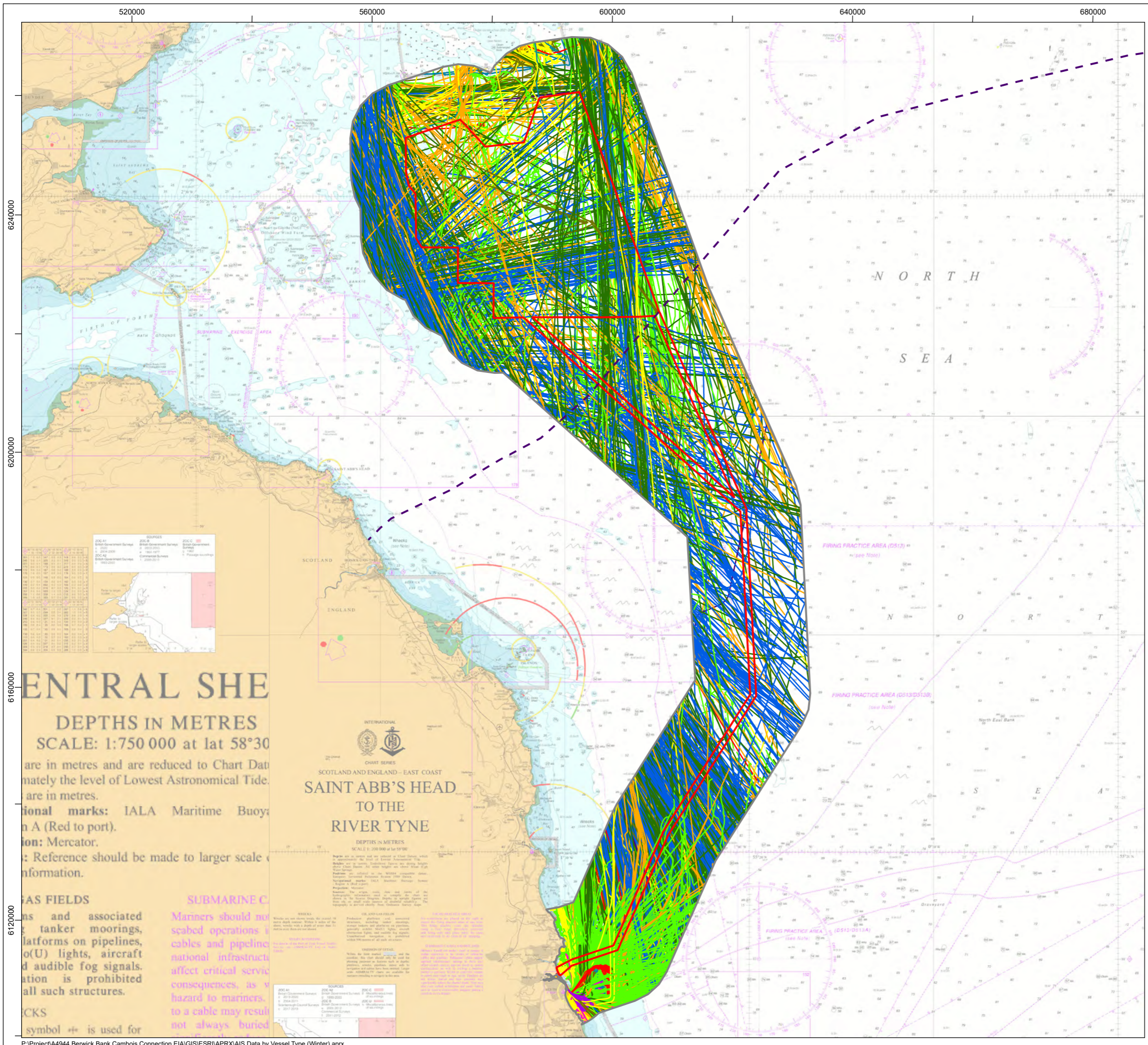
Project
CAMBOIS CONECTION

Title
**Figure 13.2
Navigational Features**



© Copyright SSE 2022. Berwick Bank Wind Farm does not warrant that this document is definitive or free of error and does not accept liability for any loss caused or arising from reliance upon the information provided.

Scale	Plot Size	Datum	Projection
1:1,250,000	A3	WGS84	World Mercator
Drawing Number	A100796_S01_13.2		Sheet No. 001 OF 001



Legend

- Marine Scheme Boundary
- Shipping and Navigation Study Area
- Scotland Adjacent Waters Limit

Vessel Type

- Fishing
- Military
- Dredger/Underwater Ops
- Tug
- Passenger
- Cargo
- Tanker
- Other
- Recreational
- Oil and Gas
- Wind Farm
- Pilot Vessel

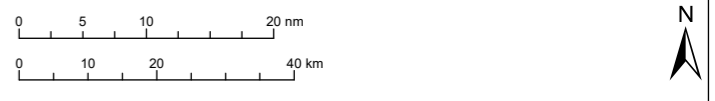
© Crown copyright 2023. All rights reserved. EK001-542200

04	-	-	-	-	-
03	-	-	-	-	-
02	-	-	-	-	-
01	27/04/2023	FOR ISSUE	DS	LC	SSE
Rev	Date	Status	Drwn	Chkd	Appd



Project
CAMBOIS CONECTION

Title
**Figure 13.3
AIS Data by Vessel Type (Winter)**



© Copyright SSE 2022. Berwick Bank Wind Farm does not warrant that this document is definitive or free of error and does not accept liability for any loss caused or arising from reliance upon the information provided.

Scale	Plot Size	Datum	Projection
1:1,100,000	A3	WGS84	World Mercator
Drawing Number	A100796_S01_13.3		Sheet No.
			001 OF 001

CENTRAL SHEET
DEPTHS IN METRES
SCALE: 1:750 000 at lat 58°30'

Depths are in metres and are reduced to Chart Datum, which is approximately the level of Lowest Astronomical Tide. Soundings in fathoms are in metres.

Navigation marks: IALA Maritime Buoyage System (Red to port).

Projection: Mercator.

Reference: should be made to larger scale charts for more information.

WIND FIELDS
Towers and associated moorings, platforms on pipelines, (U) lights, aircraft audible fog signals. Installation is prohibited all such structures.

SUBMARINE CABLES
Manned and unmanned seabed operations, cables and pipeline infrastructure affect critical services, consequences, as a hazard to mariners. A cable may result in not always buried.

CHART SYMBOLS
Symbol ++ is used for

**SCOTLAND AND ENGLAND - EAST COAST
TO THE RIVER TYNE**
DEPTHS IN METRES
SCALE 1:100 000 at lat 58°30'

Begin at 0 in metres and are reduced to Chart Datum, which is approximately the level of Lowest Astronomical Tide. Soundings in fathoms are in metres.

Navigation marks: IALA Maritime Buoyage System (Red to port).

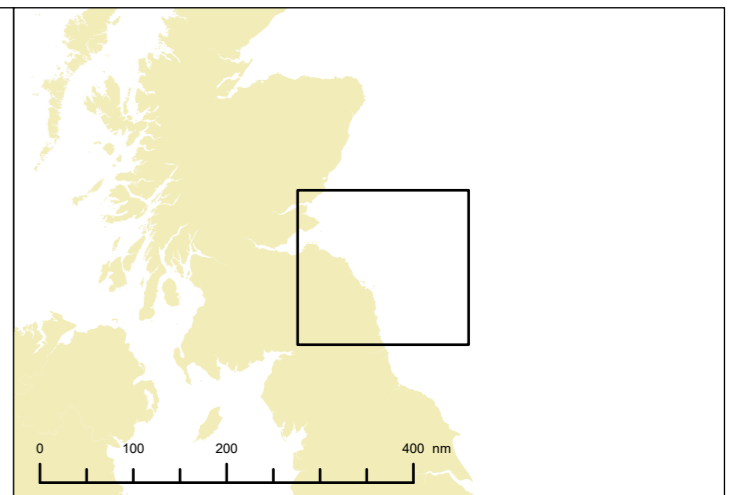
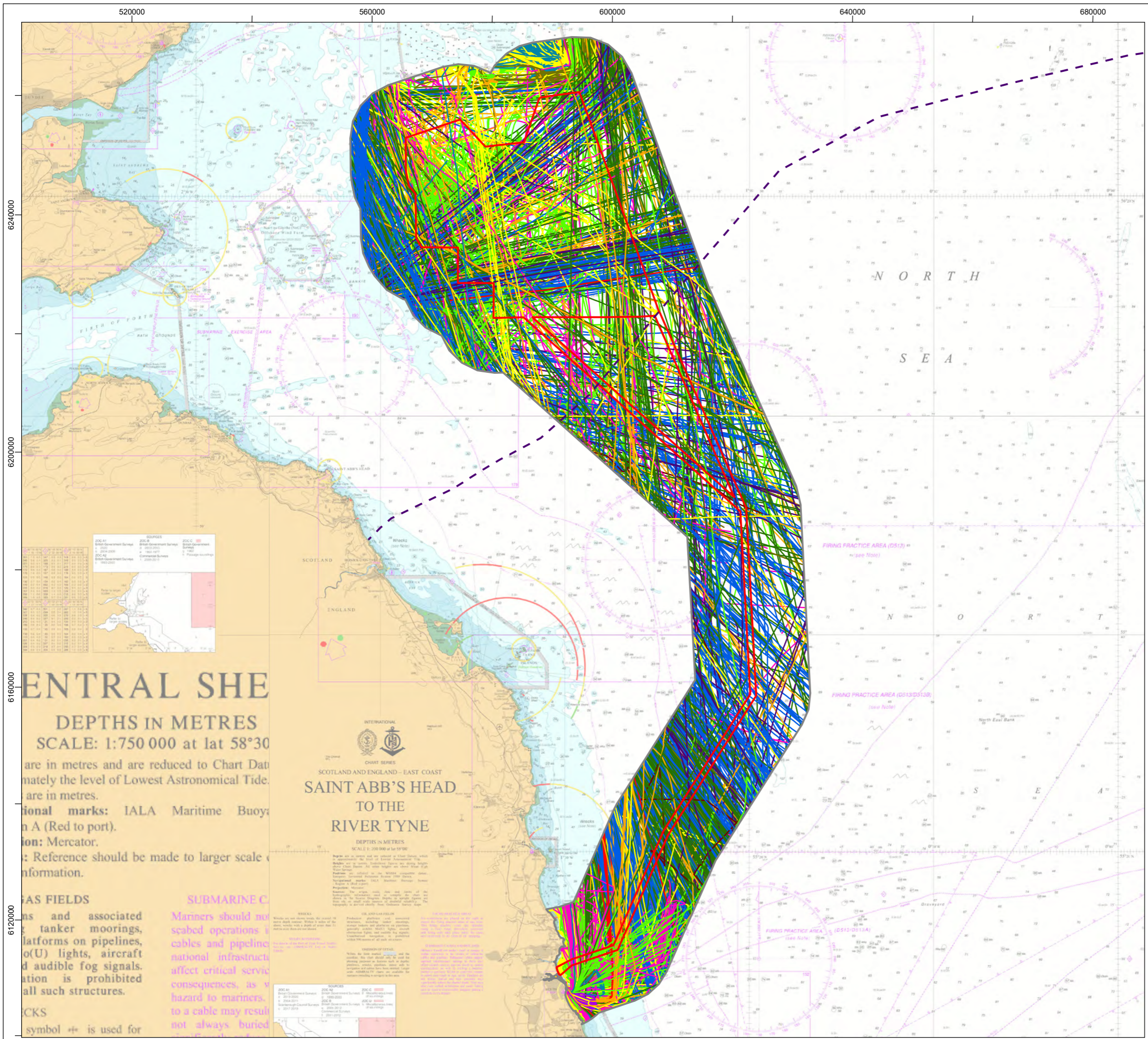
Projection: Mercator.

Reference: should be made to larger scale charts for more information.

WIND FIELDS
Towers and associated moorings, platforms on pipelines, (U) lights, aircraft audible fog signals. Installation is prohibited all such structures.

SUBMARINE CABLES
Manned and unmanned seabed operations, cables and pipeline infrastructure affect critical services, consequences, as a hazard to mariners. A cable may result in not always buried.

CHART SYMBOLS
Symbol ++ is used for



Legend

- Marine Scheme Boundary
- Shipping and Navigation Study Area
- Scotland Adjacent Waters Limit

Vessel Type

- Fishing
- Military
- Dredger/Underwater Ops
- Tug
- Passenger
- Cargo
- Tanker
- Other
- Recreational
- Oil and Gas
- Wind Farm
- Pilot Vessel

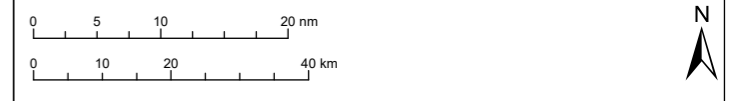
© Crown copyright 2023. All rights reserved. EK001-542200

04	-	-	-	-	-
03	-	-	-	-	-
02	-	-	-	-	-
01	27/04/2023	FOR ISSUE	DS	LC	SSE
Rev	Date	Status	Drwn	Chkd	Appd



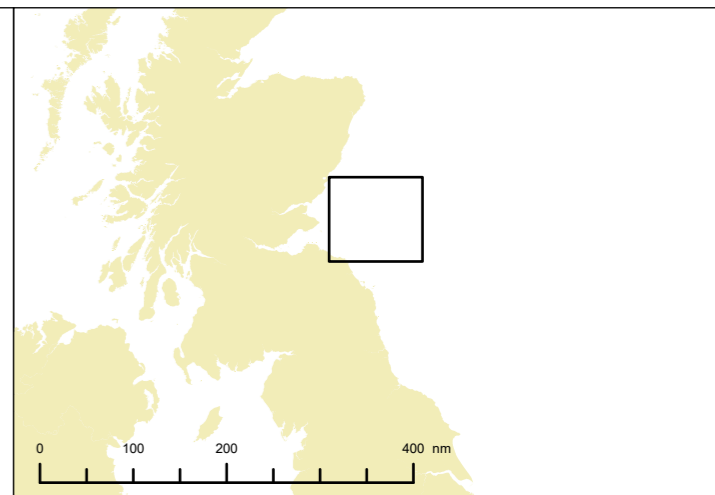
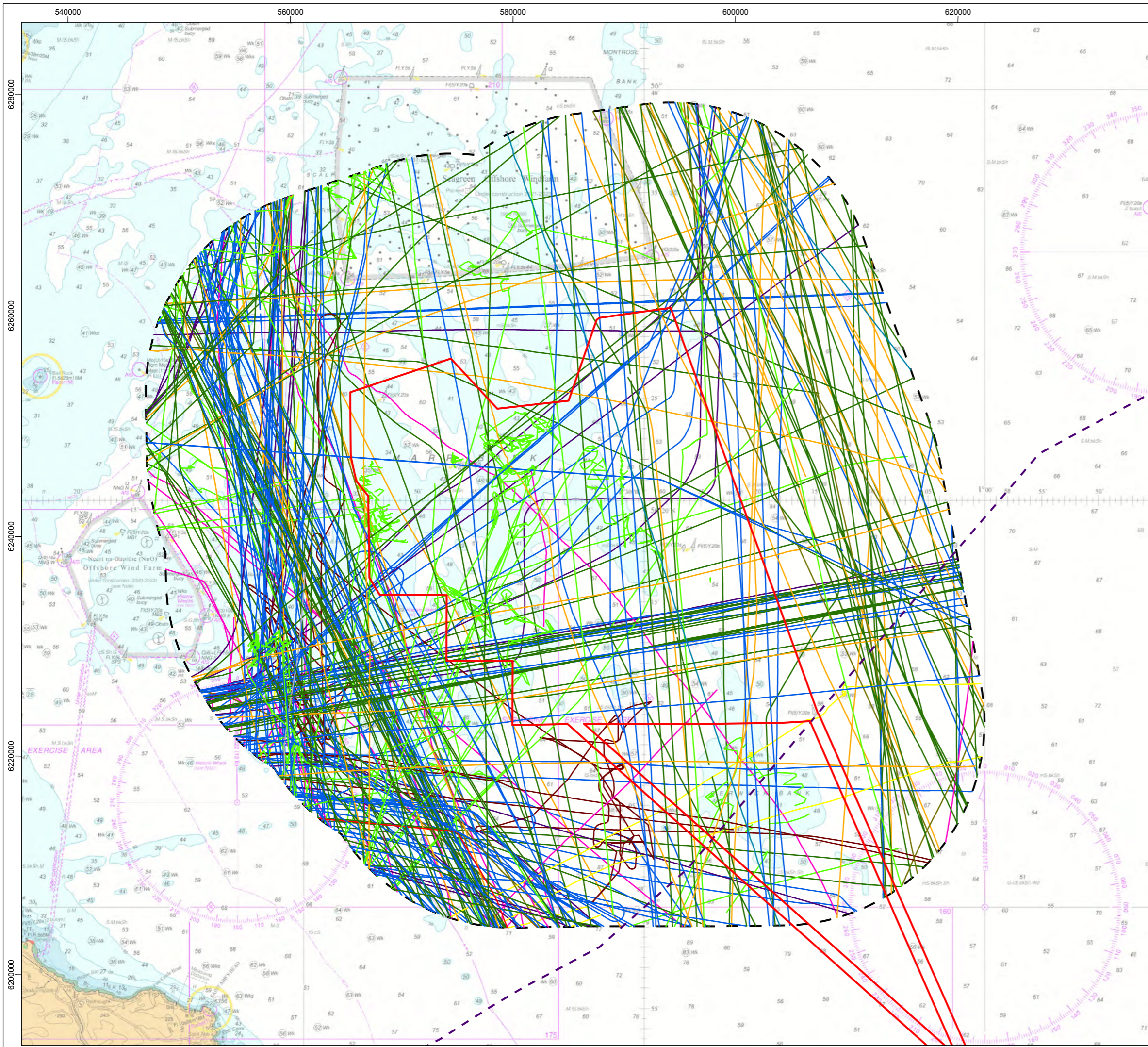
Project
CAMBOIS CONECTION

Title
**Figure 13.4
AIS Data by Vessel Type (Summer)**



© Copyright SSE 2022. Berwick Bank Wind Farm does not warrant that this document is definitive or free of error and does not accept liability for any loss caused or arising from reliance upon the information provided.

Scale	Plot Size	Datum	Projection
1:1,100,000	A3	WGS84	World Mercator
Drawing Number	A100796_S01_13.4		Sheet No.
			001 OF 001



Legend

- Marine Scheme Boundary
- Berwick Bank NRA Study Area
- Scotland Adjacent Waters Limit

Vessel Type

- Unspecified
- Fishing
- Military
- Dredger/Underwater Ops
- Tug
- Passenger
- Cargo
- Tanker
- Other
- Recreational
- Oil and Gas
- Wind Farm

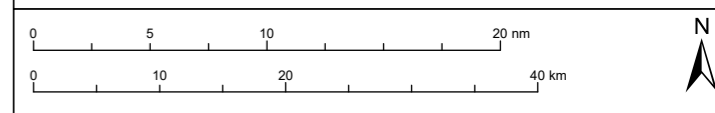
© Crown copyright 2023. All rights reserved. EK001-542200

04	-	-	-	-	-
03	-	-	-	-	-
02	-	-	-	-	-
01	28/04/2023	FOR ISSUE	DS	LC	SSE
Rev	Date	Status	Drwn	Chkd	Appd



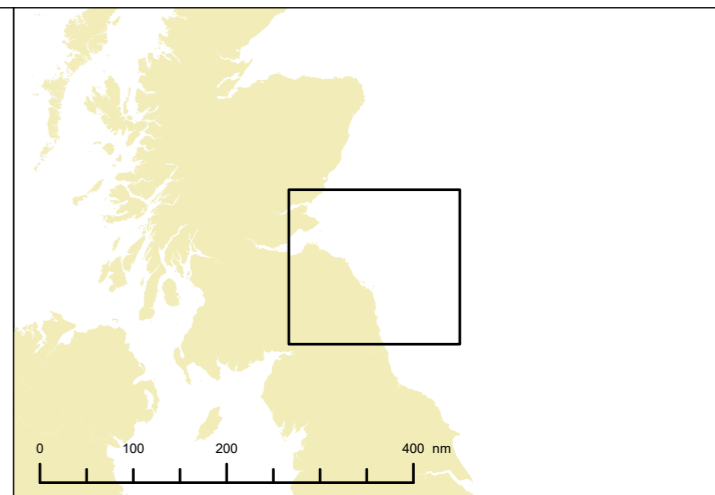
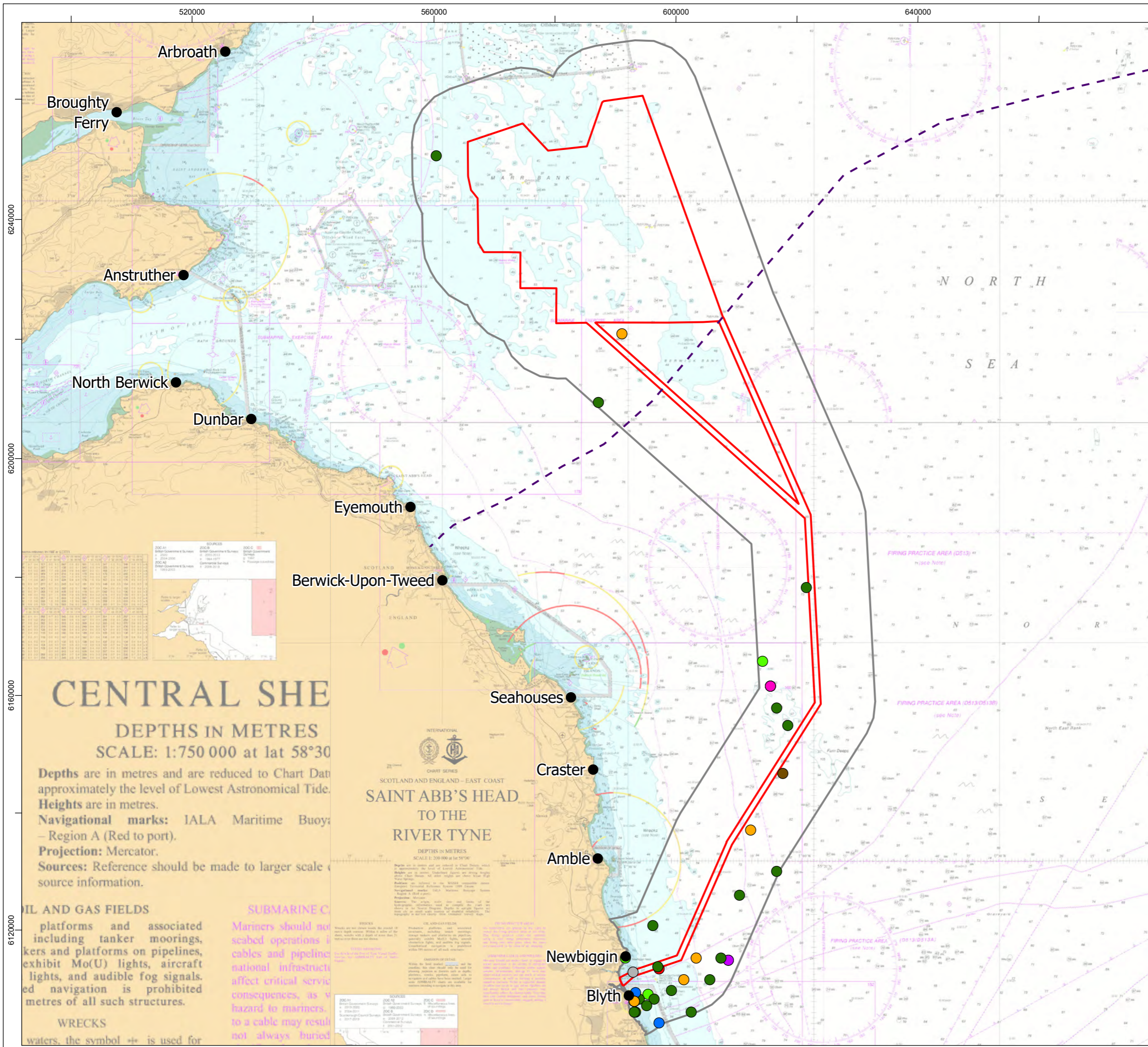
Project
CAMBOIS CONNECTION

Title
**Figure 13.5
NRA Survey Data by Vessel Type (28 Days)**



© Copyright SSE 2022. Berwick Bank Wind Farm does not warrant that this document is definitive or free of error and does not accept liability for any loss caused or arising from reliance upon the information provided.

Scale	Plot Size	Datum	Projection
1:600,000	A3	WGS84	World Mercator
Drawing Number	A100796_S01_13.5		Sheet No. 001 OF 001



Legend

- Marine Scheme Boundary
- Shipping and Navigation Study Area
- Scotland Adjacent Waters Limit
- RNLi Station

MAIB Incident Type

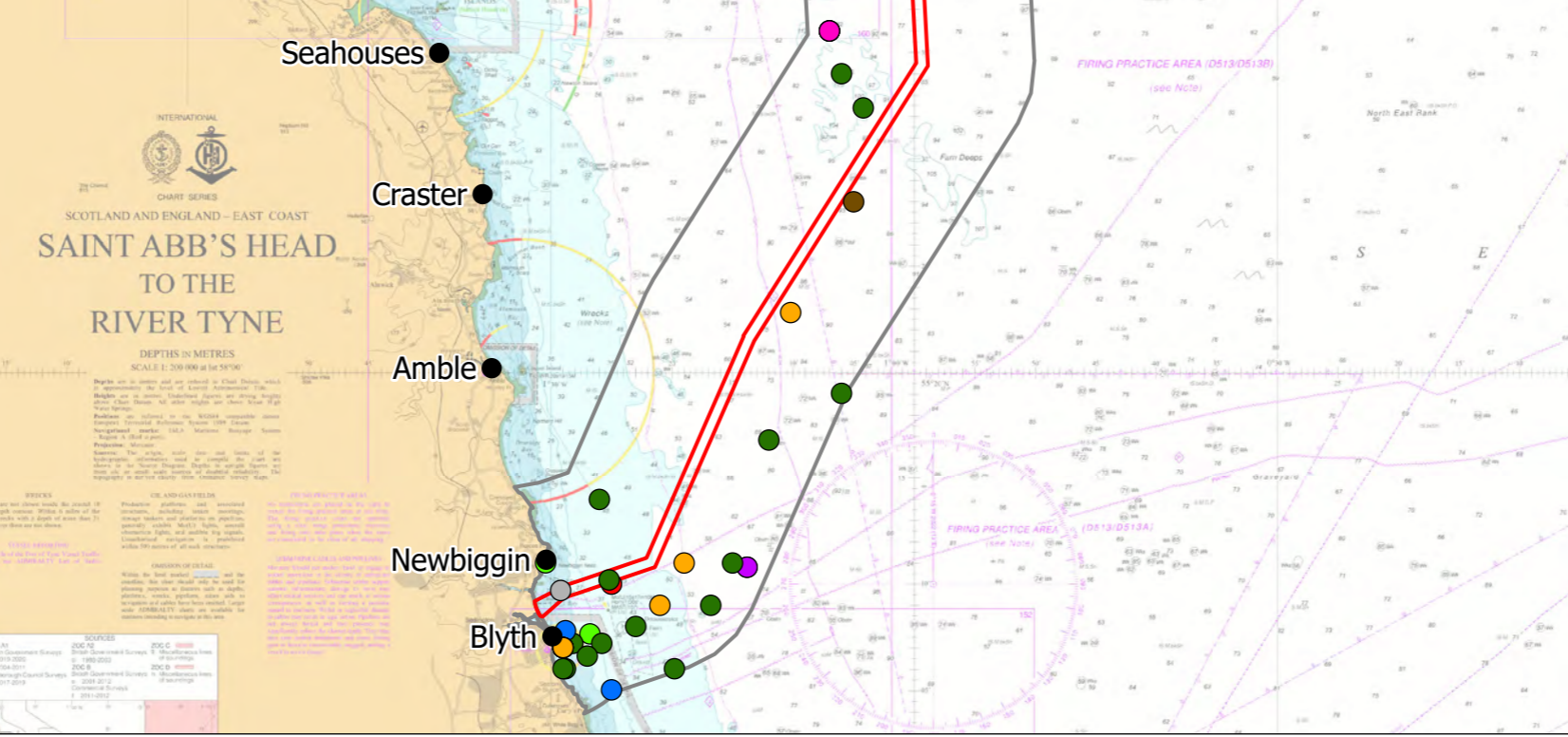
- Accident to Person
- Capsizing/Listing
- Collision
- Fire/Explosion
- Flooding/Foundering
- Hazardous Incident
- Loss of control
- Machinery Failure
- Pollution
- Other

CENTRAL SHEET
DEPTHS IN METRES
 SCALE: 1:750 000 at lat 58°30'

Depths are in metres and are reduced to Chart Datum approximately the level of Lowest Astronomical Tide. Heights are in metres. Navigational marks: IALA Maritime Buoyage System – Region A (Red to port). Projection: Mercator. Sources: Reference should be made to larger scale charts for source information.

WRECKS
 In shallow waters, the symbol \oplus is used for wrecks. In deep waters, the symbol \oplus is used for wrecks. In deep waters, the symbol \oplus is used for wrecks.

SUBMARINE CABLES
 Mariners should not engage in seabed operations which may affect submarine cables and pipelines. National infrastructure cables and pipelines affect critical services. Mariners should not engage in seabed operations which may affect submarine cables and pipelines. National infrastructure cables and pipelines affect critical services.



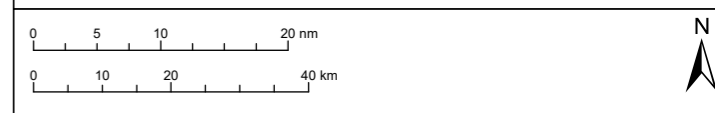
© Crown copyright 2023. All rights reserved. EK001-542200

04	-	-	-	-	-
03	-	-	-	-	-
02	-	-	-	-	-
01	28/04/2023	FOR ISSUE	DS	LC	SSE
Rev	Date	Status	Drwn	Chkd	Appd



Project
CAMBOIS CONECTION

Title
**Figure 13.6
 MAIB Incident Type (2010-2019)
 and RNLi Lifeboat Stations**



© Copyright SSE 2022. Berwick Bank Wind Farm does not warrant that this document is definitive or free of error and does not accept liability for any loss caused or arising from reliance upon the information provided.

Scale	Plot Size	Datum	Projection
1:1,100,000	A3	WGS84	World Mercator
Drawing Number	A100796_S01_13.6		Sheet No. 001 OF 001