

- Legend**
- Marine Scheme Boundary
 - Berwick Bank Wind Farm Array Area
 - Marine Scheme Offshore Export Cable Corridor
 - Marine Archaeology Study Area
 - UK 12 Nautical Mile Limit
 - Scotland/England Territorial Waters

© Crown copyright 2023. All rights reserved. EK001-542200
 © Crown copyright and database rights 2023 Ordnance Survey 0100031673.
 OceanWise, Esri, DeLorme, NaturalVue, Esri UK, Esri, HERE, Garmin, Foursquare, FAO, METI/NASA, USGS.

04	-	-	-	-	-
03	-	-	-	-	-
02	-	-	-	-	-
01	25/05/2023	-	-	KF	SS AB
Rev	Date	Status		Drwn	Chkd Appd



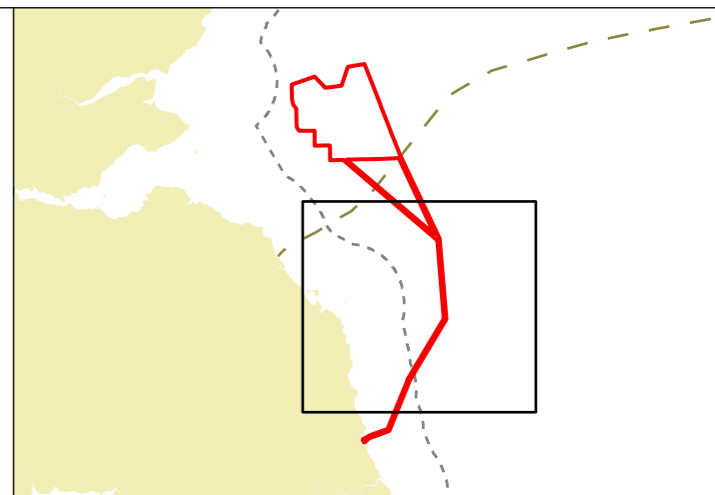
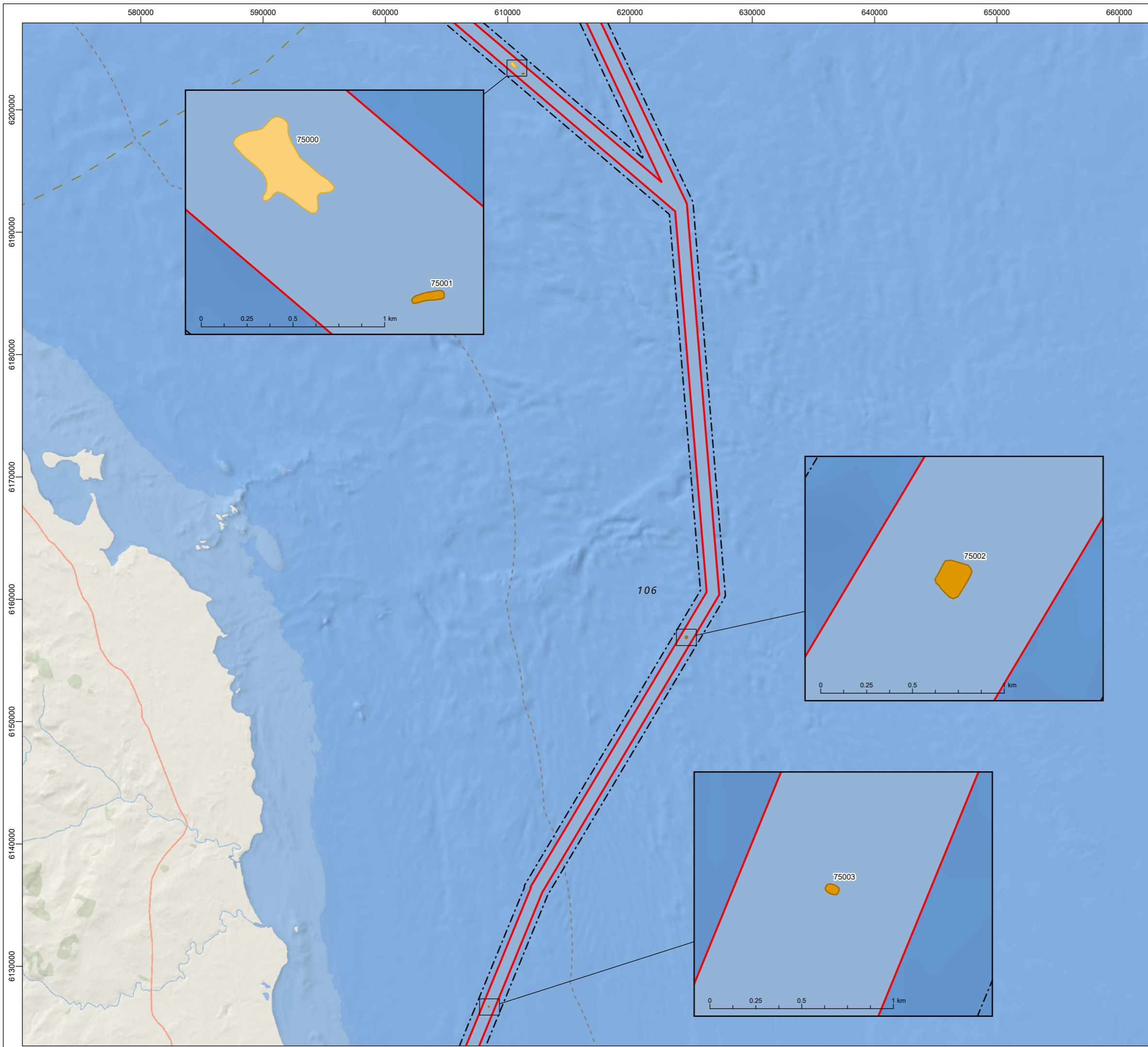
Project
CAMBOIS CONNECTION

Title
**FIGURE 14.1
 SITE LOCATION**



© Copyright SSE 2022. Berwick Bank Wind Farm does not warrant that this document is definitive or free of error and does not accept liability for any loss caused or arising from reliance upon the information provided.

Scale	Plot Size	Datum	Projection
1:600,000	A3	WGS84	UTM30N
Drawing Number			Sheet No.
A100796_S01_14.1			001 OF 001



- Legend**
- Marine Scheme Boundary
 - Marine Scheme Offshore Export Cable Corridor
 - Marine Archaeology Study Area
 - UK 12 Nautical Mile Limit
 - Scotland/England Territorial Waters
- Palaeogeographic features of archaeological potential**
- Cut and fill
 - Dune feature

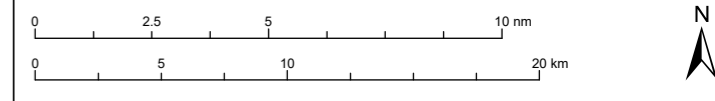
© Crown copyright 2023. All rights reserved. EK001-542200
© Crown copyright and database rights 2023 Ordnance Survey 0100031673.
OceanWise, Esri, DeLorme, NaturalVue, Esri UK, Esri, HERE, Garmin, Foursquare, GeoTechnologies, Inc, METI/NASA, USGS.

04	-	-	-	-	-
03	-	-	-	-	-
02	-	-	-	-	-
01	25/05/2023	-	-	KF	SS AB
Rev	Date	Status		Drwn	Chkd Appd



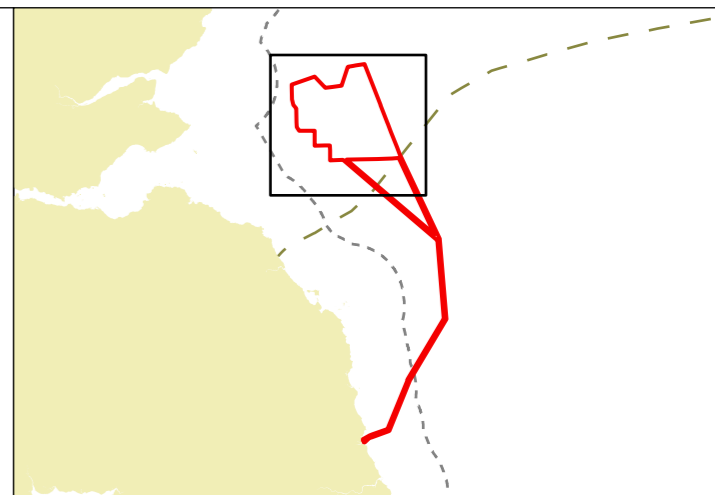
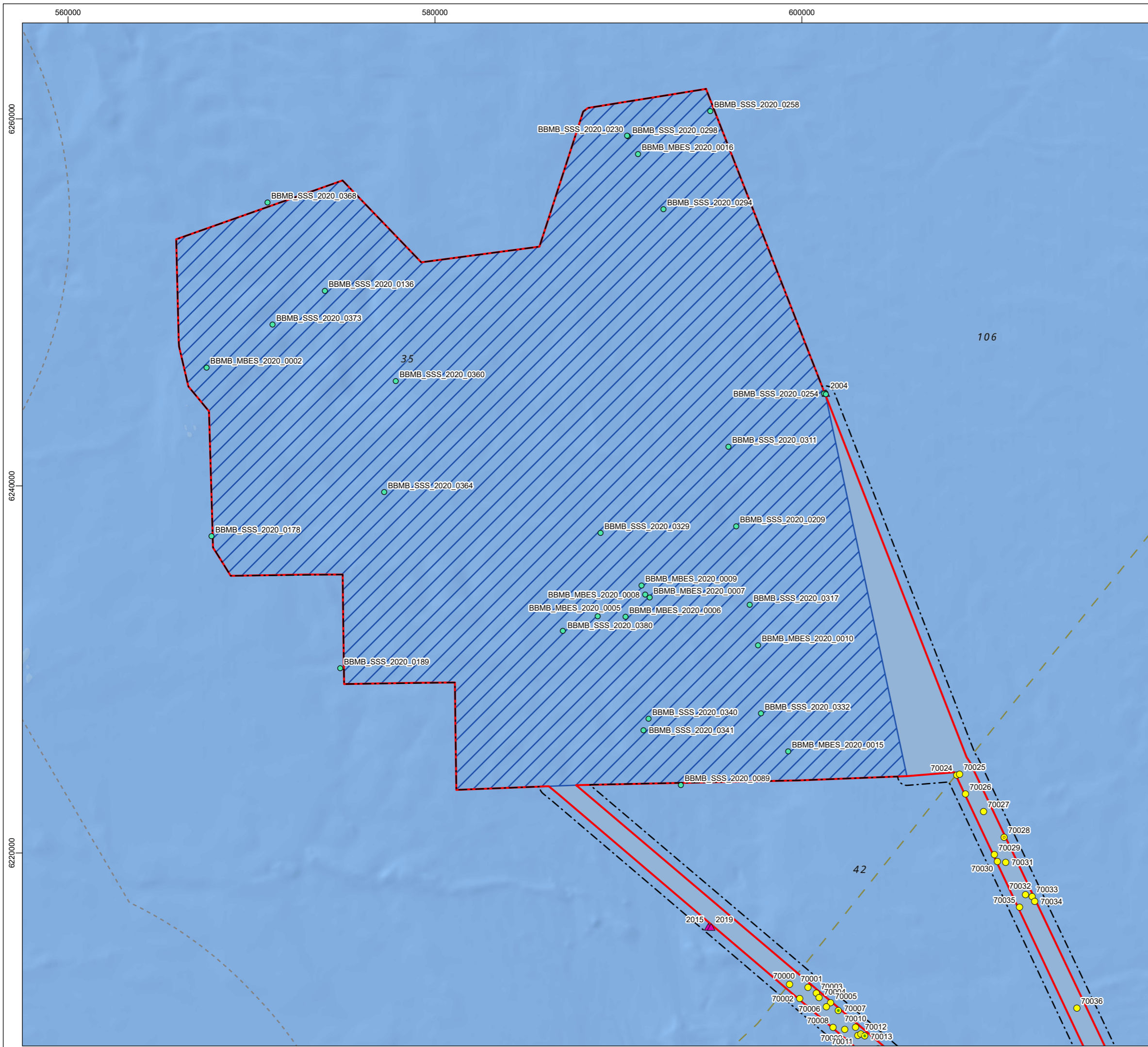
Project
CAMBOIS CONNECTION

Title
**FIGURE 14.2
PALAEOGEOGRAPHIC FEATURES OF
ARCHAEOLOGICAL POTENTIAL**



© Copyright SSE 2022. Berwick Bank Wind Farm does not warrant that this document is definitive or free of error and does not accept liability for any loss caused or arising from reliance upon the information provided.

Scale	Plot Size	Datum	Projection
1:300,000	A3	WGS84	UTM30N
Drawing Number	A100796_S01_14.2		Sheet No. 001 OF 001



- Legend**
- Marine Scheme Boundary
 - Berwick Bank Wind Farm Array Area
 - Marine Scheme Offshore Export Cable Corridor
 - Marine Archaeology Study Area
 - UK 12 Nautical Mile Limit
 - Scotland/England Territorial Waters
 - ▲ Marine Heritage Assets (Cambois Connection)
 - Marine Heritage Assets (Berwick Bank Wind Farm Surveys)
- Seabed features of archaeological potential (Cambois Connection surveys)**
- A2_I – Uncertain origin of possible archaeological interest (low priority)

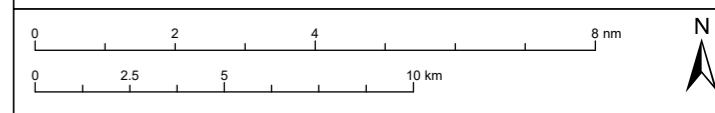
© Crown copyright 2023. All rights reserved. EK001-54220
© Crown copyright and database rights 2023 Ordnance Survey 0100031673.
OceanWise, Esri, DeLorme, NaturalVue, Esri UK, Esri, HERE, Garmin, Foursquare, METI/NASA, USGS.

04	-	-	-	-	-
03	-	-	-	-	-
02	-	-	-	-	-
01	25/05/2023	-	-	KF	SS AB
Rev	Date	Status		Drwn	Chkd Appd



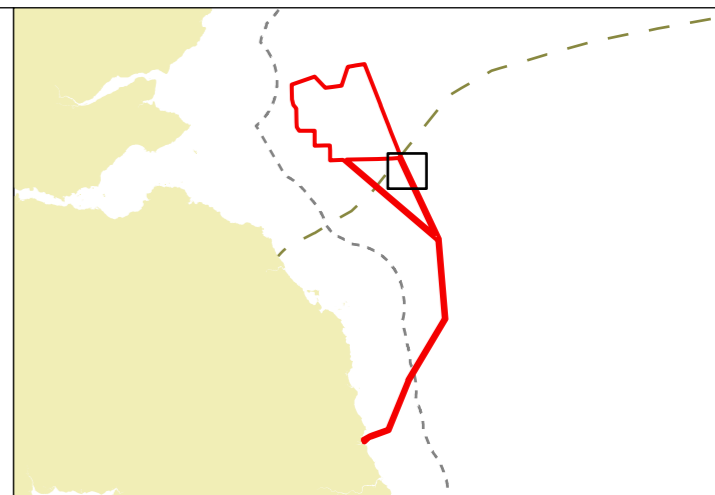
Project
CAMBOIS CONNECTION

Title
**FIGURE 14.3A
MARINE HERITAGE ASSETS**



© Copyright SSE 2022. Berwick Bank Wind Farm does not warrant that this document is definitive or free of error and does not accept liability for any loss caused or arising from reliance upon the information provided.

Scale	Plot Size	Datum	Projection
1:200,000	A3	WGS84	UTM30N
Drawing Number	A100796_S01_14.3A		Sheet No.
			001 OF 011



Legend

- Marine Scheme Boundary
- Berwick Bank Wind Farm Array Area
- Marine Scheme Offshore Export Cable Corridor
- Marine Archaeology Study Area
- UK 12 Nautical Mile Limit
- Scotland/England Territorial Waters

Seabed features of archaeological potential (Cambois Connection surveys)

- A2_1 – Uncertain origin of possible archaeological interest (low priority)

Seabed feature boundaries

- Depression

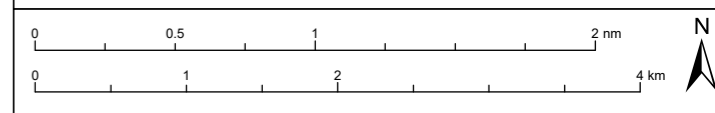
© Crown copyright 2023. All rights reserved. EK001-542200
© Crown copyright and database rights 2023 Ordnance Survey 0100031673.
Esri UK, Esri, HERE, Garmin, Foursquare, GeoTechnologies, Inc, METI/NASA, USGS, Esri, DeLorme, NaturalVue.

04	-	-	-	-	-
03	-	-	-	-	-
02	-	-	-	-	-
01	04/07/2023	-	-	KF	LA AB
Rev	Date	Status	Drwn	Chkd	Appd



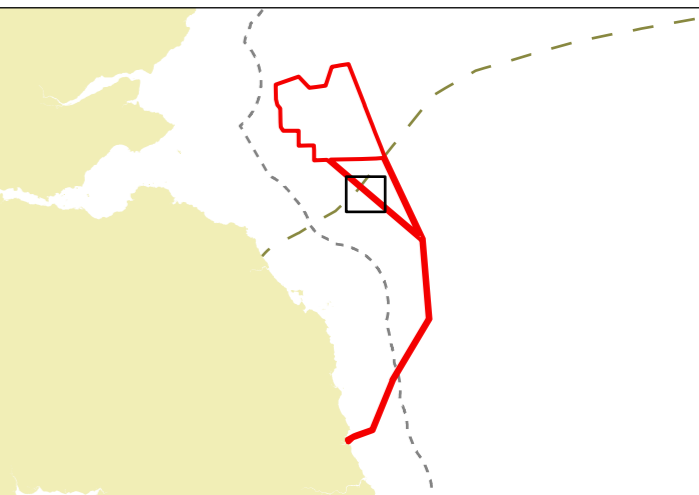
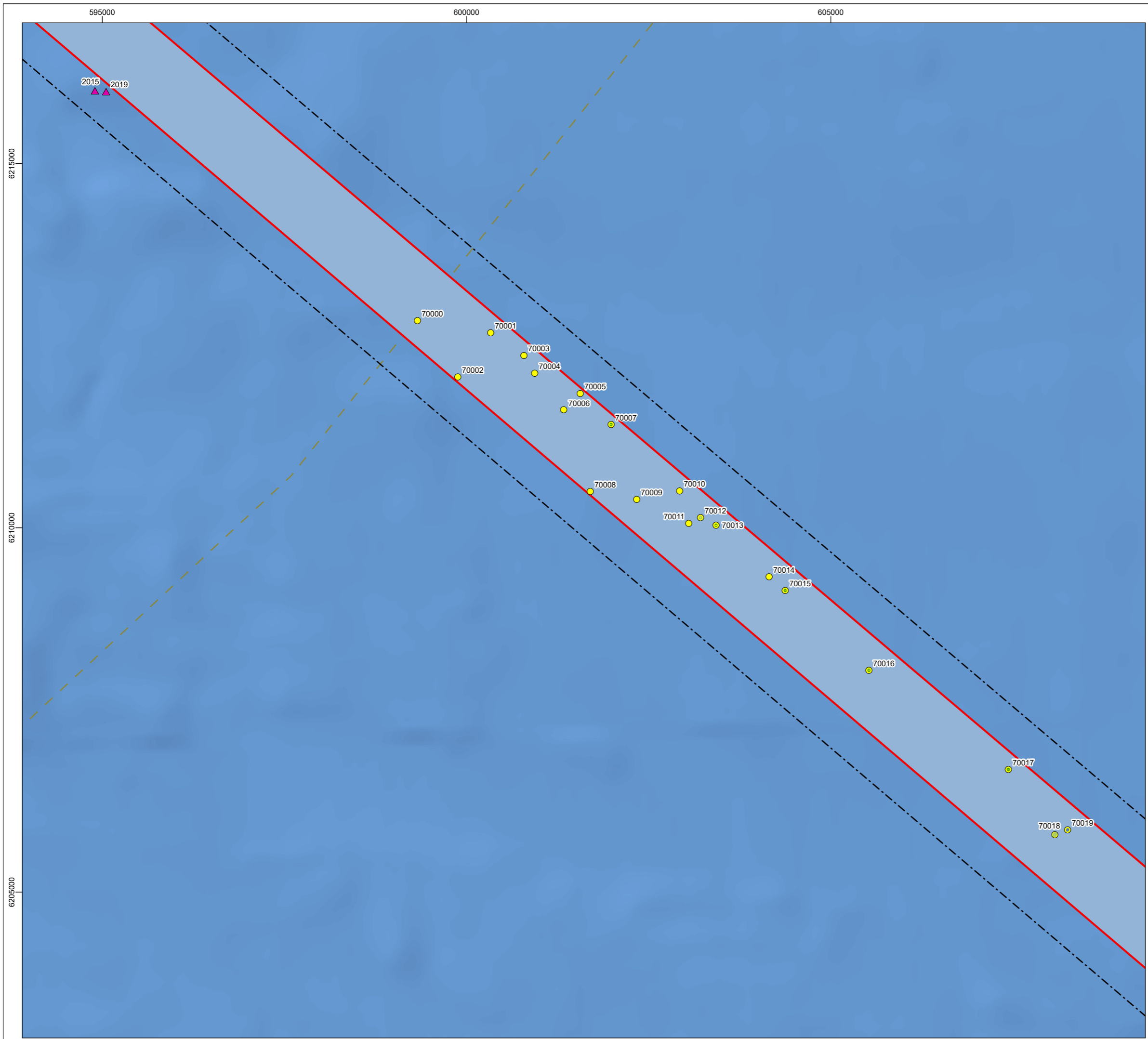
Project
CAMBOIS CONNECTION

Title
**FIGURE 14.3B
MARINE HERITAGE ASSETS**



© Copyright SSE 2022. Berwick Bank Wind Farm does not warrant that this document is definitive or free of error and does not accept liability for any loss caused or arising from reliance upon the information provided.

Scale	Plot Size	Datum	Projection
1:50,000	A3	WGS84	UTM30N
Drawing Number	Sheet No.		
A100796_S01_14.3B	002 OF 011		



Legend

- Marine Scheme Boundary
- Marine Scheme Offshore Export Cable Corridor
- Marine Archaeology Study Area
- UK 12 Nautical Mile Limit
- Scotland/England Territorial Waters
- ▲ Marine Heritage Assets (Cambois Connection)

Seabed features of archaeological potential (Cambois Connection surveys)

- A2_1 – Uncertain origin of possible archaeological interest (low priority)

Seabed feature boundaries

- Seabed disturbance
- Bright reflector
- Dark reflector

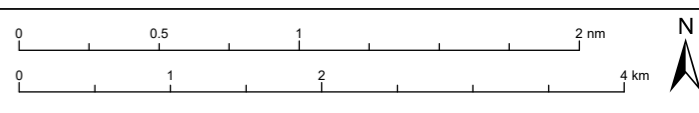
© Crown copyright 2023. All rights reserved. EK001-542200
 © Crown copyright and database rights 2023 Ordnance Survey 0100031673.
 Esri UK, Esri, HERE, Garmin, Foursquare, GeoTechnologies, Inc, METI/NASA, USGS, Esri, DeLorme, NaturalVue.

04	-	-	-	-	-
03	-	-	-	-	-
02	-	-	-	-	-
01	04/07/2023	-	-	KF	LA AB
Rev	Date	Status	Drwn	Chkd	Appd



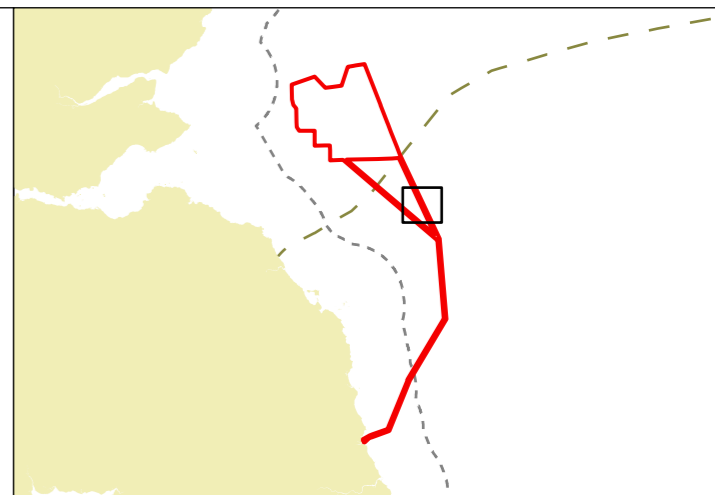
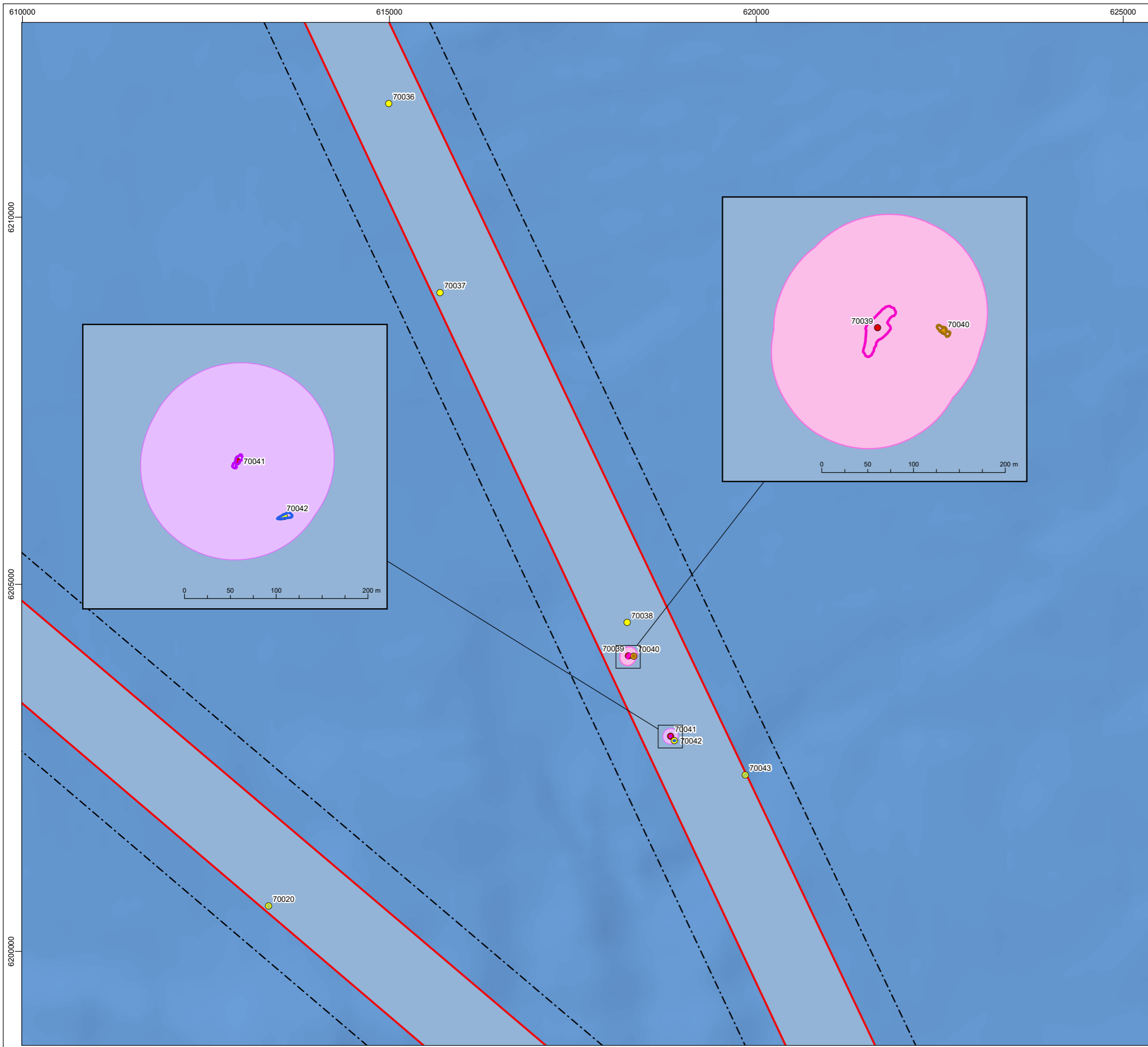
Project
CAMBOIS CONNECTION

Title
**FIGURE 14.3C
MARINE HERITAGE ASSETS**



© Copyright SSE 2022. Berwick Bank Wind Farm does not warrant that this document is definitive or free of error and does not accept liability for any loss caused or arising from reliance upon the information provided.

Scale	Plot Size	Datum	Projection
1:50,000	A3	WGS84	UTM30N
Drawing Number	Sheet No.		
A100796_S01_14.3C	003 OF 011		



- Legend**
- Marine Scheme Boundary
 - Marine Scheme Offshore Export Cable Corridor
 - Marine Archaeology Study Area
 - UK 12 Nautical Mile Limit
 - Scotland/England Territorial Waters
- Seabed features of archaeological potential (Cambois Connection surveys)**
- A1 – Anthropogenic origin of archaeological interest
 - A2_h – Uncertain origin of possible archaeological interest (high priority)
 - A2_l – Uncertain origin of possible archaeological interest (low priority)
- Seabed feature boundaries**
- Wreck
 - Debris
 - Depression
 - Seabed disturbance
 - Dark reflector
- Recommended Archaeological Exclusion Zones**
- Wreck
 - Debris

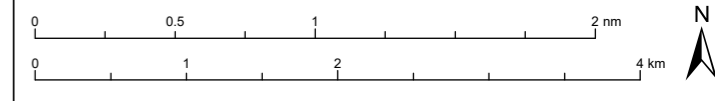
© Crown copyright 2023. All rights reserved. EK001-542200
 © Crown copyright and database rights 2023 Ordnance Survey 0100031673.
 OceanWise, Esri, DeLorme, NaturalVue, Esri UK, Esri, HERE, Garmin, Foursquare, GeoTechnologies, Inc, METI/NASA, USGS.

04	-	-	-	-	-
03	-	-	-	-	-
02	-	-	-	-	-
01	04/07/2023	-	-	KF	LA AB
Rev	Date	Status	Drwn	Chkd	Appd



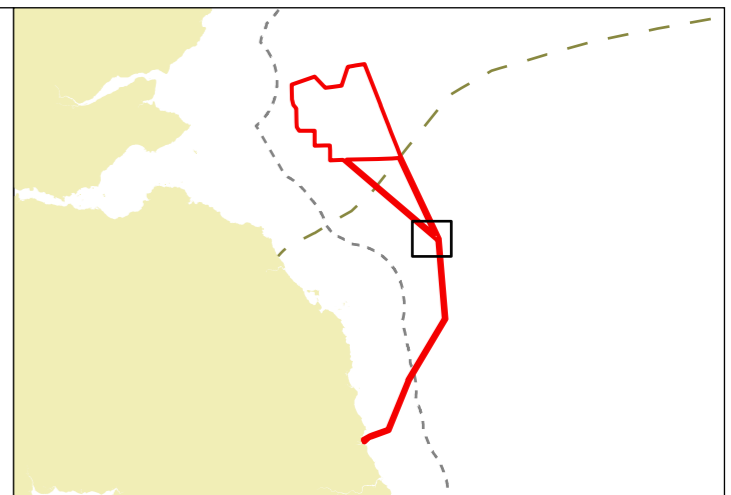
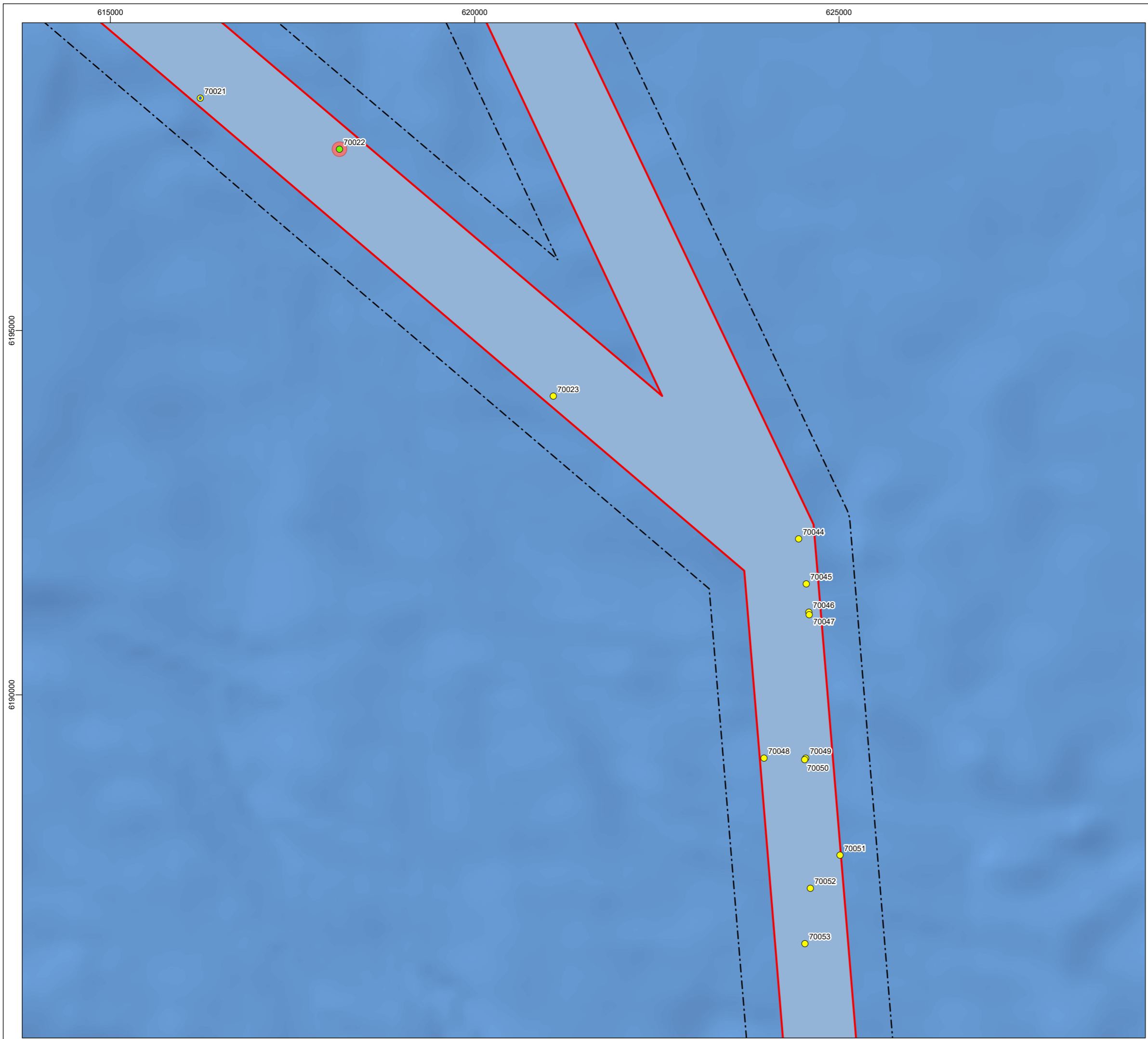
Project
CAMBOIS CONNECTION

Title
**FIGURE 14.3D
 MARINE HERITAGE ASSETS**



© Copyright SSE 2022. Berwick Bank Wind Farm does not warrant that this document is definitive or free of error and does not accept liability for any loss caused or arising from reliance upon the information provided.

Scale	Plot Size	Datum	Projection
1:50,000	A3	WGS84	UTM30N
Drawing Number	Sheet No.		
A100796_S01_14.3D	004 OF 011		



Legend

- Marine Scheme Boundary
- Marine Scheme Offshore Export Cable Corridor
- Marine Archaeology Study Area
- UK 12 Nautical Mile Limit
- Scotland/England Territorial Waters

Seabed features of archaeological potential (Cambois Connection surveys)

- A2_1 – Uncertain origin of possible archaeological interest (low priority)
- A3 – Historic record of possible archaeological interest with no corresponding geophysical anomaly

Seabed feature boundaries

- Dark reflector

Recommended Archaeological Exclusion Zones

- Recorded wreck

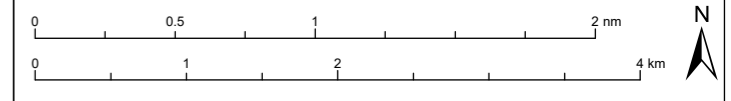
© Crown copyright 2023. All rights reserved. EK001-542200
 © Crown copyright and database rights 2023 Ordnance Survey 0100031673.
 Esri UK, Esri, HERE, Garmin, Foursquare, GeoTechnologies, Inc, METI/NASA, USGS, Esri, DeLorme, NaturalVue.

04	-	-	-	-	-
03	-	-	-	-	-
02	-	-	-	-	-
01	04/07/2023	-	-	KF	LA AB
Rev	Date	Status	Drwn	Chkd	Appd



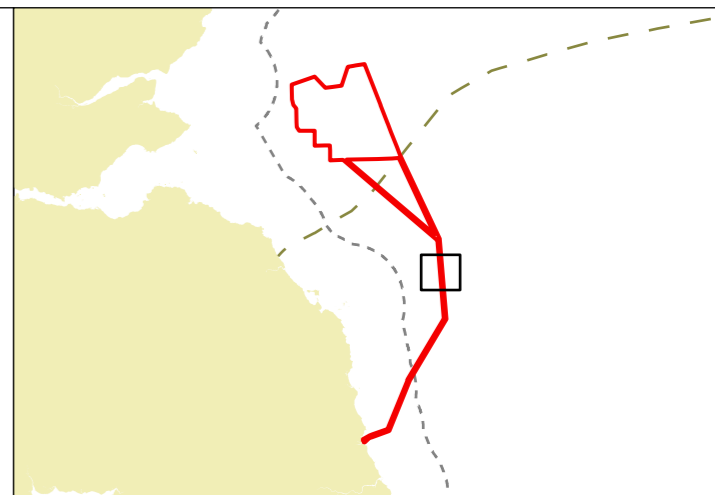
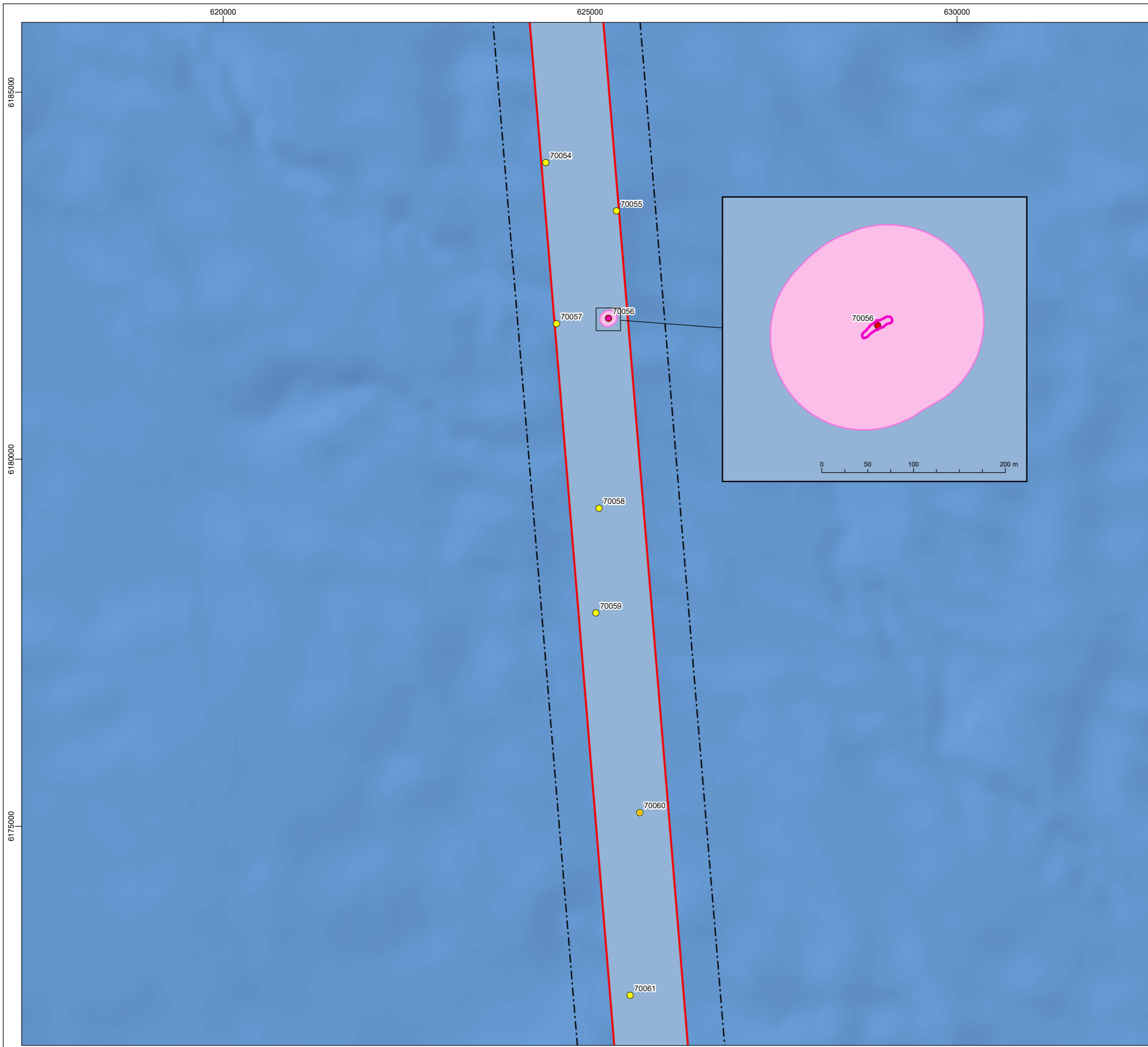
Project
CAMBOIS CONNECTION

Title
**FIGURE 14.3E
MARINE HERITAGE ASSETS**



© Copyright SSE 2022. Berwick Bank Wind Farm does not warrant that this document is definitive or free of error and does not accept liability for any loss caused or arising from reliance upon the information provided.

Scale	Plot Size	Datum	Projection
1:50,000	A3	WGS84	UTM30N
Drawing Number	Sheet No.		
A100796_S01_14.3E	005 OF 011		



- Legend**
- Marine Scheme Boundary
 - Marine Scheme Offshore Export Cable Corridor
 - Marine Archaeology Study Area
 - UK 12 Nautical Mile Limit
 - Scotland/England Territorial Waters
- Seabed features of archaeological potential (Cambois Connection surveys)**
- A1 – Anthropogenic origin of archaeological interest
 - A2_1 – Uncertain origin of possible archaeological interest (low priority)
- Seabed feature boundaries**
- Wreck
 - Mound
- Recommended Archaeological Exclusion Zones**
- Wreck

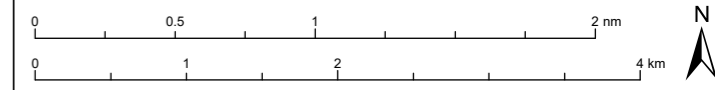
© Crown copyright 2023. All rights reserved. EK001-542200
 © Crown copyright and database rights 2023 Ordnance Survey 0100031673.
 OceanWise, Esri, DeLorme, NaturalVue, Esri UK, Esri, HERE, Garmin, Foursquare, GeoTechnologies, Inc, METI/NASA, USGS.

04	-	-	-	-	-
03	-	-	-	-	-
02	-	-	-	-	-
01	04/07/2023	-	-	KF	LA AB
Rev	Date	Status	Drwn	Chkd	Appd



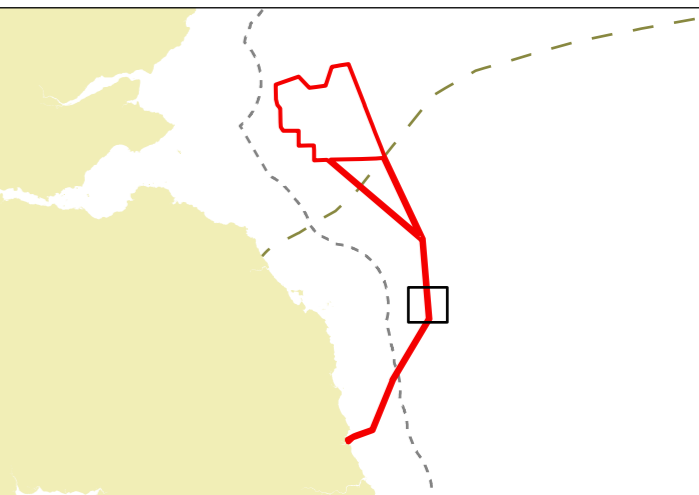
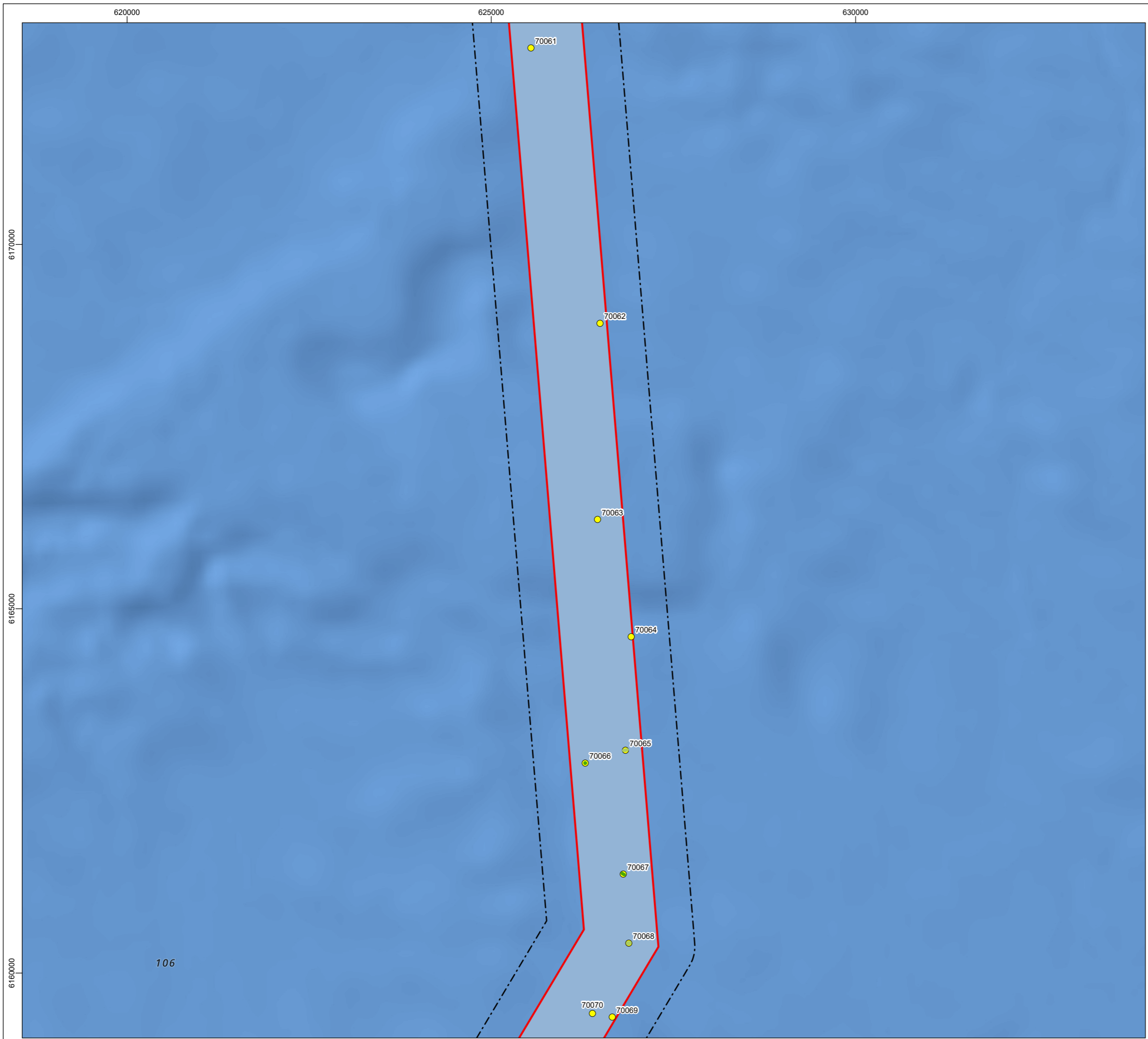
Project
CAMBOIS CONNECTION

Title
**FIGURE 14.3F
MARINE HERITAGE ASSETS**



© Copyright SSE 2022. Berwick Bank Wind Farm does not warrant that this document is definitive or free of error and does not accept liability for any loss caused or arising from reliance upon the information provided.

Scale	Plot Size	Datum	Projection
1:50,000	A3	WGS84	UTM30N
Drawing Number	A100796_S01_14.3F		Sheet No.
			006 OF 011



Legend

- Marine Scheme Boundary
- Marine Scheme Offshore Export Cable Corridor
- Marine Archaeology Study Area
- UK 12 Nautical Mile Limit
- Scotland/England Territorial Waters

Seabed features of archaeological potential (Cambois Connection surveys)

- A2_1 – Uncertain origin of possible archaeological interest (low priority)

Seabed feature boundaries

- Seabed disturbance
- Bright reflector

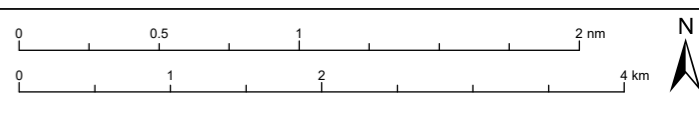
© Crown copyright 2023. All rights reserved. EK001-542200
 © Crown copyright and database rights 2023 Ordnance Survey 0100031673.
 OceanWise, Esri, DeLorme, NaturalVue, Esri UK, Esri, HERE, Garmin, Foursquare, GeoTechnologies, Inc, METI/NASA, USGS.

04	-	-	-	-	-
03	-	-	-	-	-
02	-	-	-	-	-
01	04/07/2023	-	KF	LA	AB
Rev	Date	Status	Drwn	Chkd	Appd



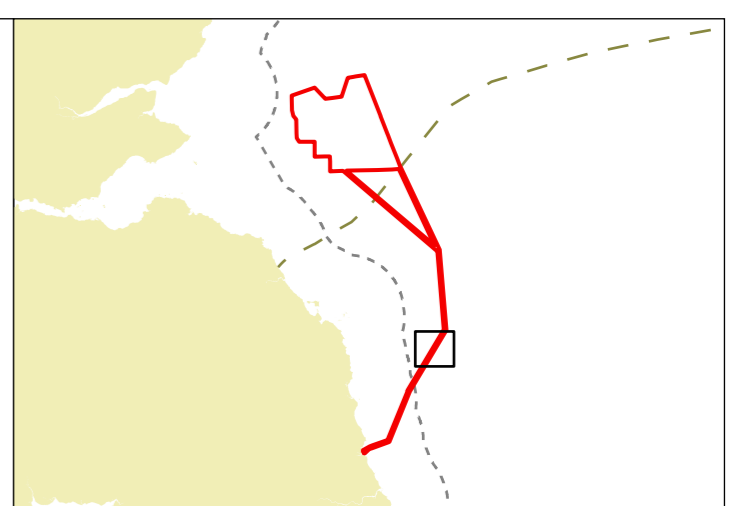
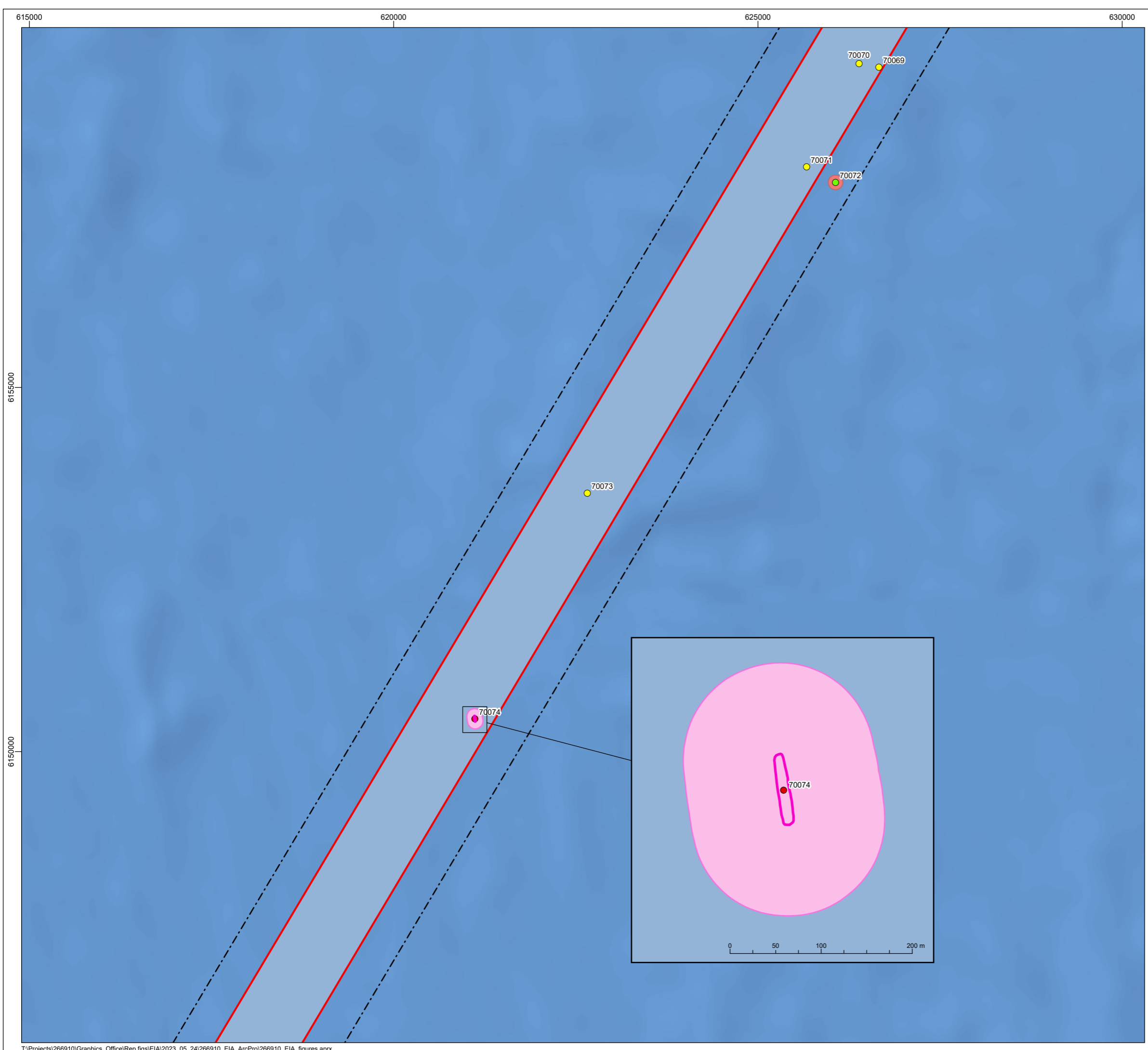
Project
CAMBOIS CONNECTION

Title
**FIGURE 14.3G
 MARINE HERITAGE ASSETS**



© Copyright SSE 2022. Berwick Bank Wind Farm does not warrant that this document is definitive or free of error and does not accept liability for any loss caused or arising from reliance upon the information provided.

Scale	Plot Size	Datum	Projection
1:50,000	A3	WGS84	UTM30N
Drawing Number	A100796_S01_14.3G		Sheet No.
			007 OF 011



- Legend**
- Marine Scheme Boundary
 - Marine Scheme Offshore Export Cable Corridor
 - Marine Archaeology Study Area
 - UK 12 Nautical Mile Limit
 - Scotland/England Territorial Waters
- Seabed features of archaeological potential (Cambois Connection surveys)**
- A1 – Anthropogenic origin of archaeological interest
 - A2_1 – Uncertain origin of possible archaeological interest (low priority)
 - A3 – Historic record of possible archaeological interest with no corresponding geophysical anomaly
- Seabed feature boundaries**
- Wreck
- Recommended Archaeological Exclusion Zones**
- Wreck
 - Recorded wreck

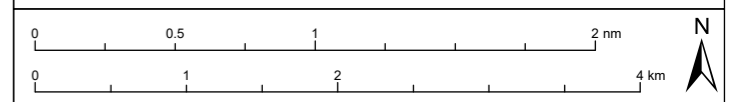
© Crown copyright 2023. All rights reserved. EK001-542200
© Crown copyright and database rights 2023 Ordnance Survey 0100031673.
OceanWise, Esri, DeLorme, NaturalVue, Esri UK, Esri, HERE, Garmin, Foursquare, GeoTechnologies, Inc, METI/NASA, USGS.

04	-	-	-	-	-
03	-	-	-	-	-
02	-	-	-	-	-
01	04/07/2023	-	-	KF	LA AB
Rev	Date	Status	Drwn	Chkd	Appd



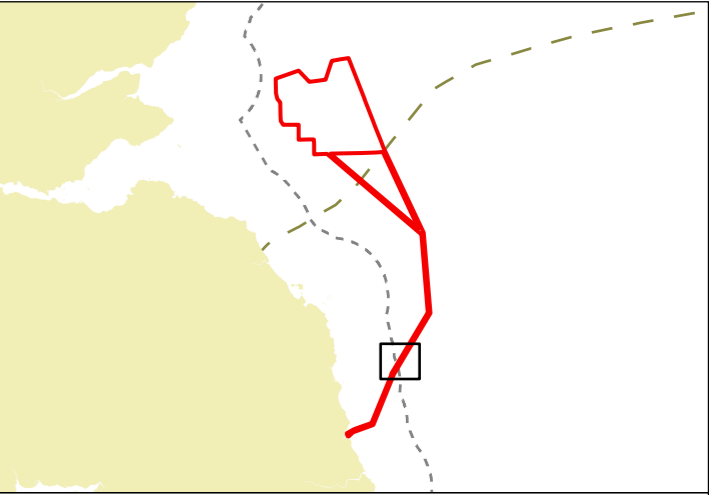
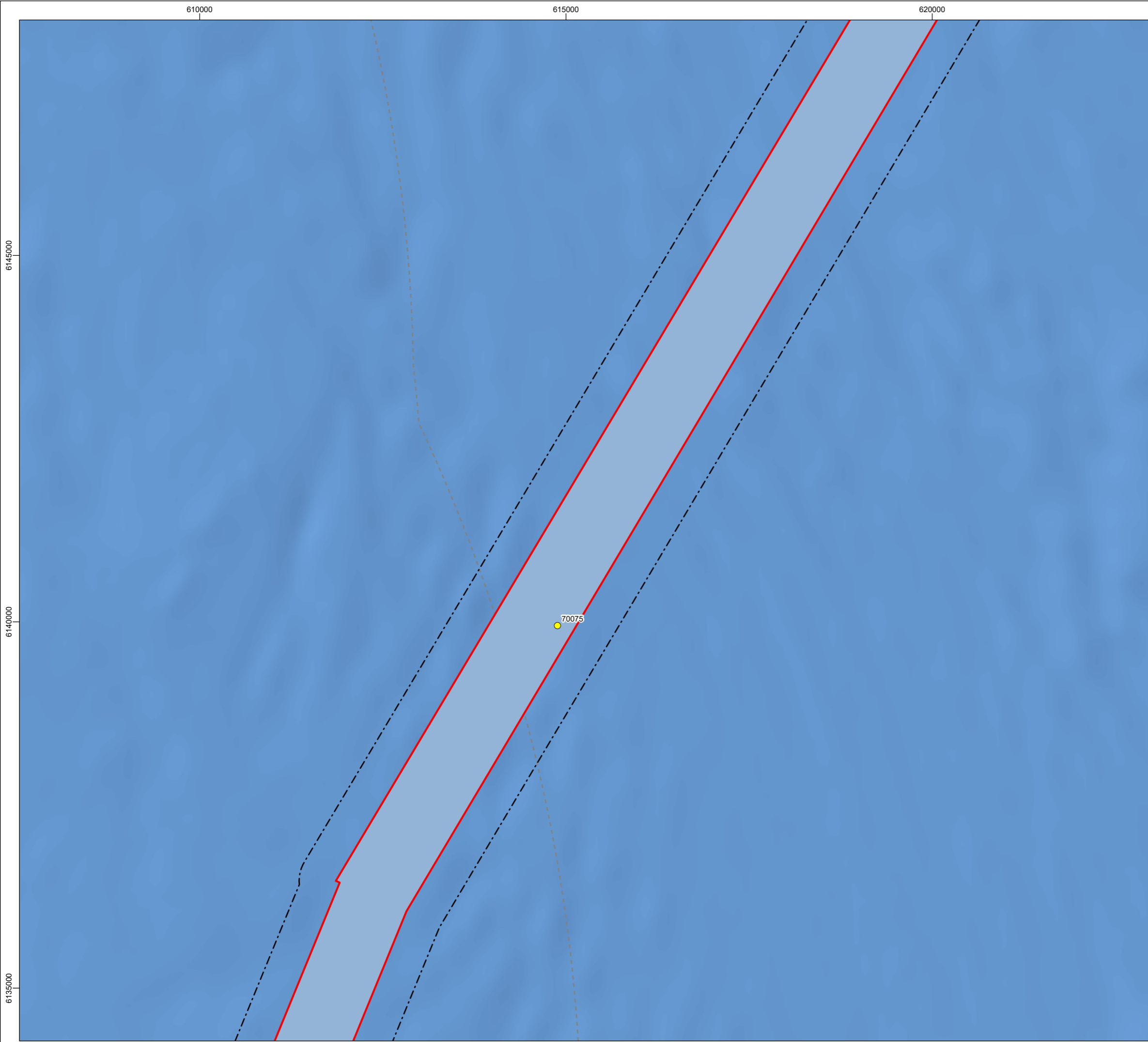
Project
CAMBOIS CONNECTION

Title
**FIGURE 14.3H
MARINE HERITAGE ASSETS**



© Copyright SSE 2022. Berwick Bank Wind Farm does not warrant that this document is definitive or free of error and does not accept liability for any loss caused or arising from reliance upon the information provided.

Scale	Plot Size	Datum	Projection
1:50,000	A3	WGS84	UTM30N
Drawing Number A100796_S01_14.3H			Sheet No. 008 OF 011



- Legend**
- Marine Scheme Boundary
 - Marine Scheme Offshore Export Cable Corridor
 - Marine Archaeology Study Area
 - UK 12 Nautical Mile Limit
 - Scotland/England Territorial Waters
- Seabed features of archaeological potential (Cambois Connection surveys)
- A2_1 – Uncertain origin of possible archaeological interest (low priority)

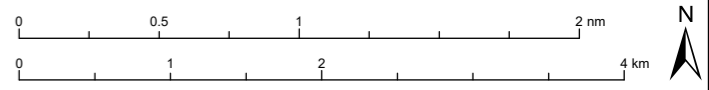
© Crown copyright 2023. All rights reserved. EK001-542200
 © Crown copyright and database rights 2023 Ordnance Survey 0100031673.
 OceanWise, Esri, DeLorme, NaturalVue, Esri UK, Esri, HERE, Garmin, Foursquare, GeoTechnologies, Inc, METI/NASA, USGS.

04	-	-	-	-	-
03	-	-	-	-	-
02	-	-	-	-	-
01	04/07/2023	-	KF	LA	AB
Rev	Date	Status	Drwn	Chkd	Appd



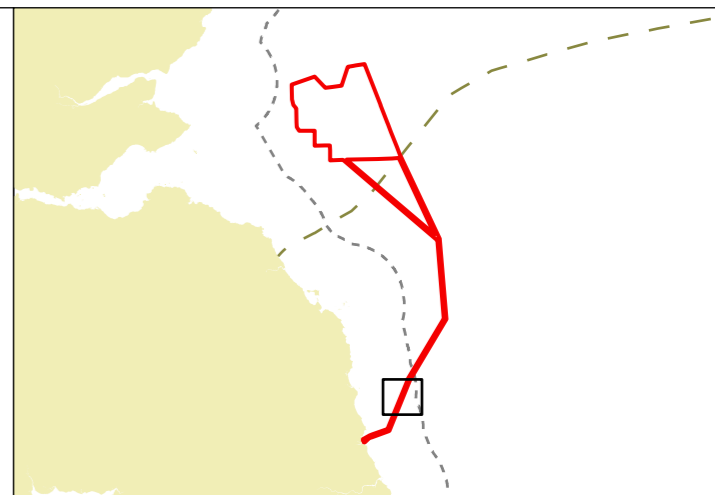
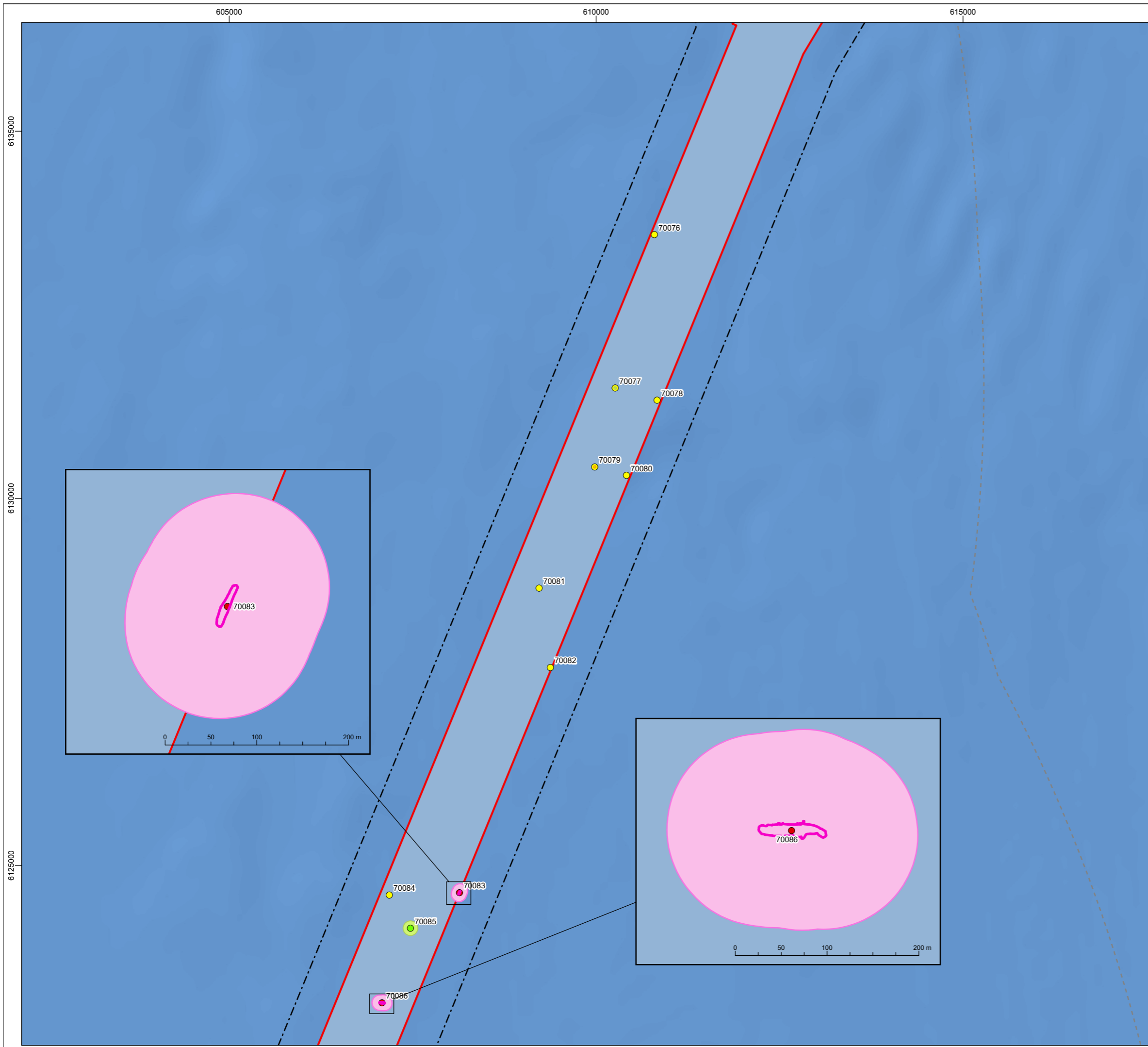
Project
CAMBOIS CONNECTION

Title
**FIGURE 14.31
 MARINE HERITAGE ASSETS**

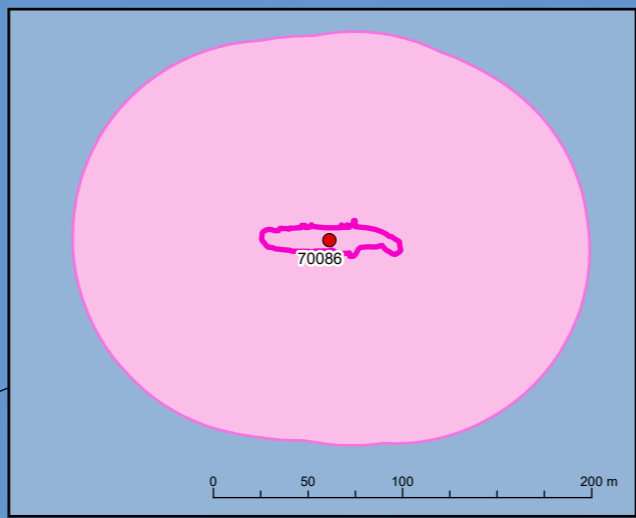
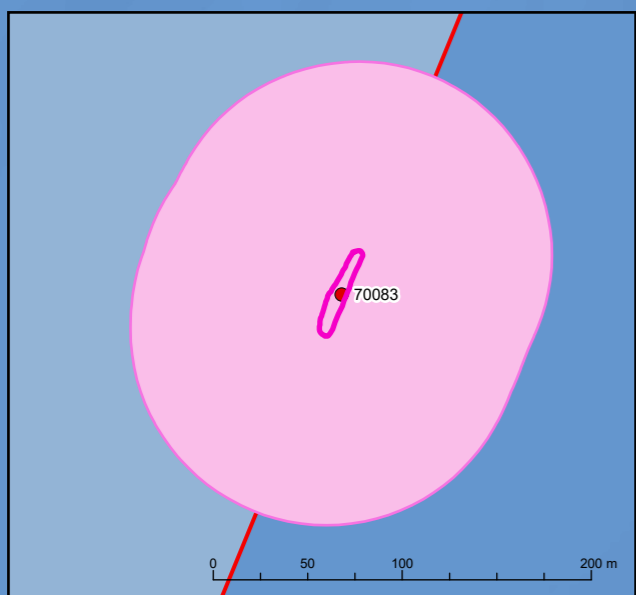


© Copyright SSE 2022. Berwick Bank Wind Farm does not warrant that this document is definitive or free of error and does not accept liability for any loss caused or arising from reliance upon the information provided.

Scale	Plot Size	Datum	Projection
1:50,000	A3	WGS84	UTM30N
Drawing Number			Sheet No.
A100796_S01_14.31			009 OF 011



- Legend**
- Marine Scheme Boundary
 - Marine Scheme Offshore Export Cable Corridor
 - Marine Archaeology Study Area
 - UK 12 Nautical Mile Limit
 - Scotland/England Territorial Waters
- Seabed features of archaeological potential (Cambois Connection surveys)**
- A1 – Anthropogenic origin of archaeological interest
 - A2_1 – Uncertain origin of possible archaeological interest (low priority)
 - A3 – Historic record of possible archaeological interest with no corresponding geophysical anomaly
- Seabed feature boundaries**
- Wreck
 - Mound
 - Seabed disturbance
- Recommended Archaeological Exclusion Zones**
- Wreck
 - Recorded obstruction



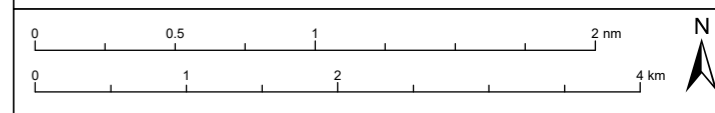
© Crown copyright 2023. All rights reserved. EK001-542200
© Crown copyright and database rights 2023 Ordnance Survey 0100031673.
OceanWise, Esri, DeLorme, NaturalVue, Esri UK, Esri, HERE, Garmin, Foursquare, GeoTechnologies, Inc, METI/NASA, USGS.

04	-	-	-	-	-
03	-	-	-	-	-
02	-	-	-	-	-
01	04/07/2023	-	-	KF	LA AB
Rev	Date	Status	Drwn	Chkd	Appd



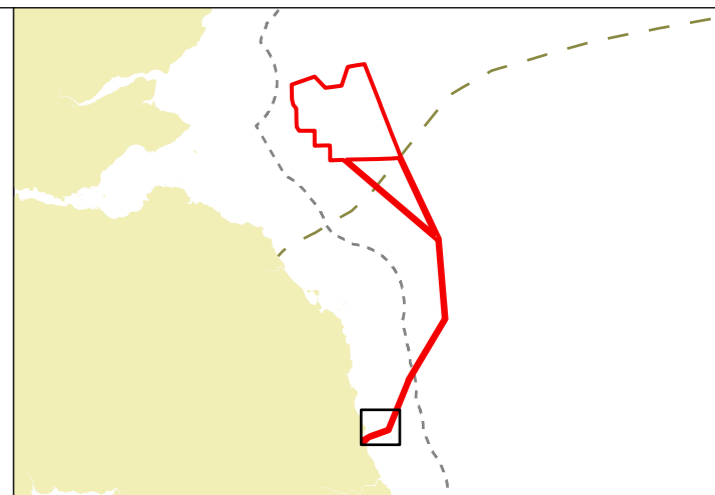
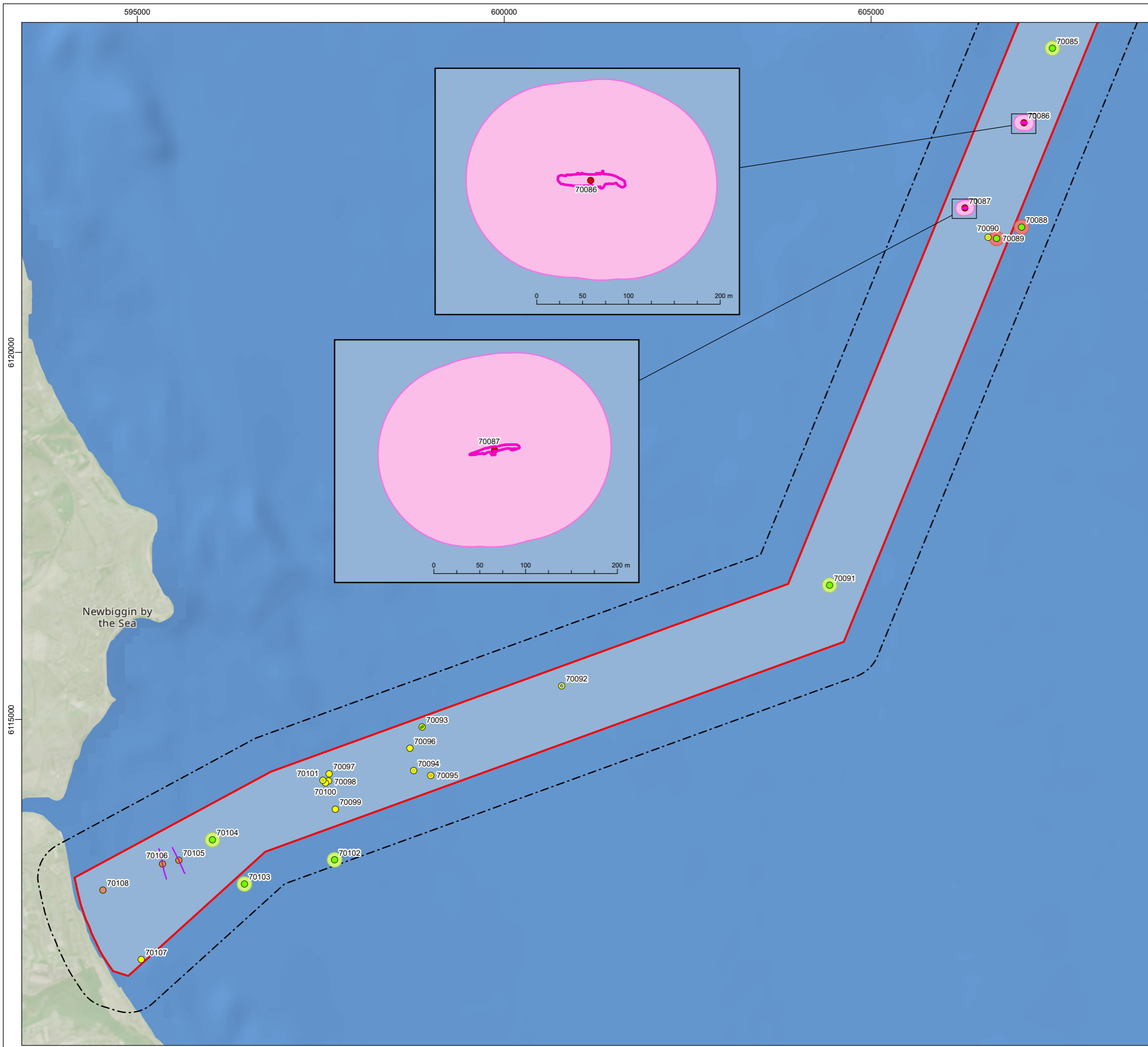
Project
CAMBOIS CONNECTION

Title
**FIGURE 14.3J
MARINE HERITAGE ASSETS**



© Copyright SSE 2022. Berwick Bank Wind Farm does not warrant that this document is definitive or free of error and does not accept liability for any loss caused or arising from reliance upon the information provided.

Scale	Plot Size	Datum	Projection
1:50,000	A3	WGS84	UTM30N
Drawing Number	Sheet No.		
A100796_S01_14.3J	010 OF 011		



- Legend**
- Marine Scheme Boundary
 - Marine Scheme Offshore Export Cable Corridor
 - Marine Archaeology Study Area
 - UK 12 Nautical Mile Limit
 - Scotland/England Territorial Waters
- Seabed features of archaeological potential (Cambois Connection surveys)**
- A1 – Anthropogenic origin of archaeological interest
 - A2_h – Uncertain origin of possible archaeological interest (high priority)
 - A2_l – Uncertain origin of possible archaeological interest (low priority)
 - A3 – Historic record of possible archaeological interest with no corresponding geophysical anomaly
- Seabed feature boundaries**
- Wreck
 - Debris field
 - Mound
 - Seabed disturbance
 - Bright reflector
 - Dark reflector
- Linear seabed features**
- Linear debris
- Recommended Archaeological Exclusion Zones**
- Wreck
 - Recorded wreck
 - Recorded obstruction

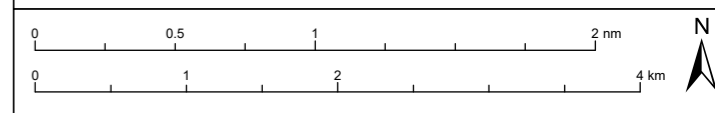
© Crown copyright 2023. All rights reserved. EK001-542200
© Crown copyright and database rights 2023 Ordnance Survey 0100031673.
OceanWise, Esri, DeLorme, NaturalVue, Esri UK, Esri, HERE, Garmin, Foursquare, GeoTechnologies, Inc, METI/NASA, USGS.

04	-	-	-	-	-
03	-	-	-	-	-
02	-	-	-	-	-
01	04/07/2023	-	-	KF	LA AB
Rev	Date	Status	Drwn	Chkd	Appd



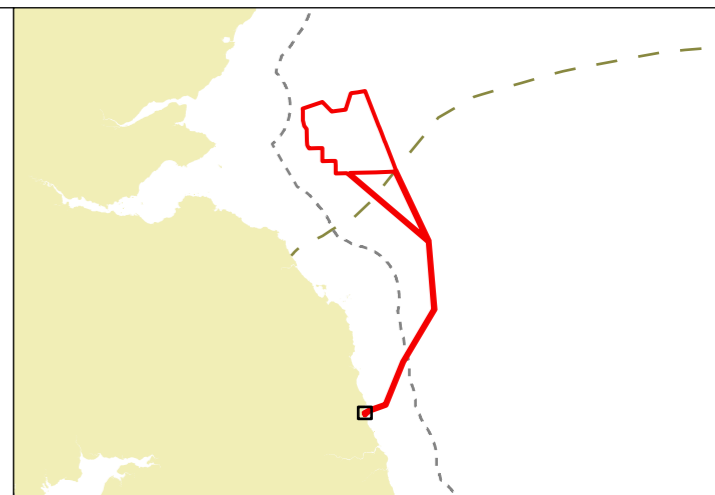
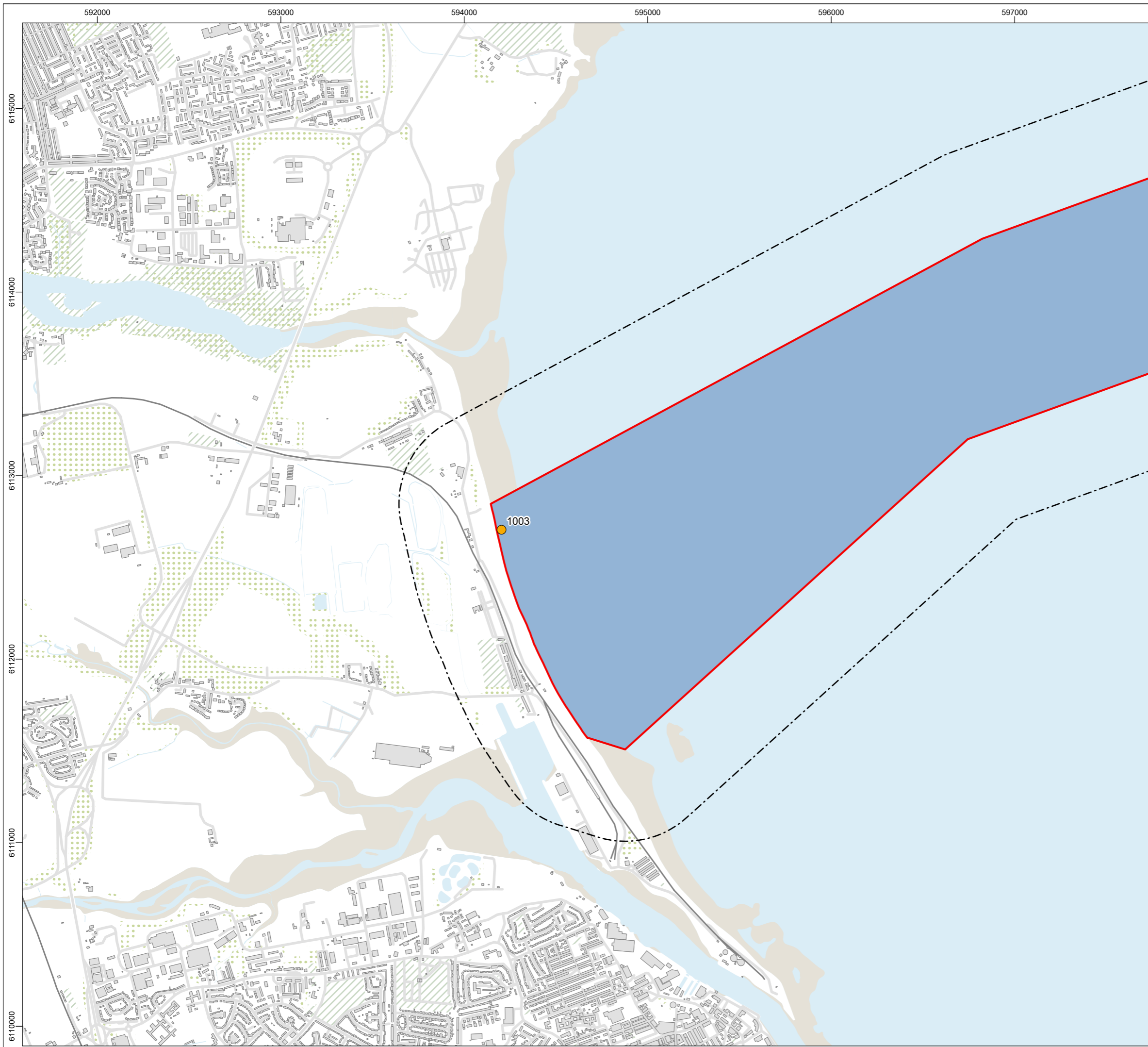
Project
CAMBOIS CONNECTION

Title
**FIGURE 14.3K
MARINE HERITAGE ASSETS**



© Copyright SSE 2022. Berwick Bank Wind Farm does not warrant that this document is definitive or free of error and does not accept liability for any loss caused or arising from reliance upon the information provided.

Scale	Plot Size	Datum	Projection
1:50,000	A3	WGS84	UTM30N
Drawing Number	A100796_S01_14.3K		Sheet No.
			011 OF 011



- Legend**
- Marine Scheme Boundary
 - Marine Scheme Offshore Export Cable Corridor
 - Marine Archaeology Study Area
 - Intertidal Heritage Assets

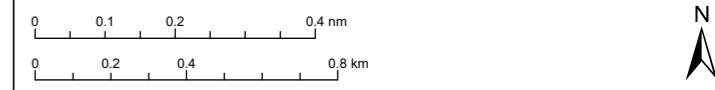
© Crown copyright 2023. All rights reserved. EK001-542200
 © Crown copyright and database rights 2023 Ordnance Survey 0100031673.

04	-	-	-	-	-
03	-	-	-	-	-
02	-	-	-	-	-
01	25/05/2023	-	-	KF	SS AB
Rev	Date	Status		Drwn	Chkd Appd



Project
CAMBOIS CONNECTION

Title
**FIGURE 14.4
 INTERTIDAL HERITAGE ASSETS**



© Copyright SSE 2022. Berwick Bank Wind Farm does not warrant that this document is definitive or free of error and does not accept liability for any loss caused or arising from reliance upon the information provided.

Scale	Plot Size	Datum	Projection
1:20,000	A3	WGS84	UTM30N
Drawing Number	A100796_S01_14.4		Sheet No.
			001 OF 001