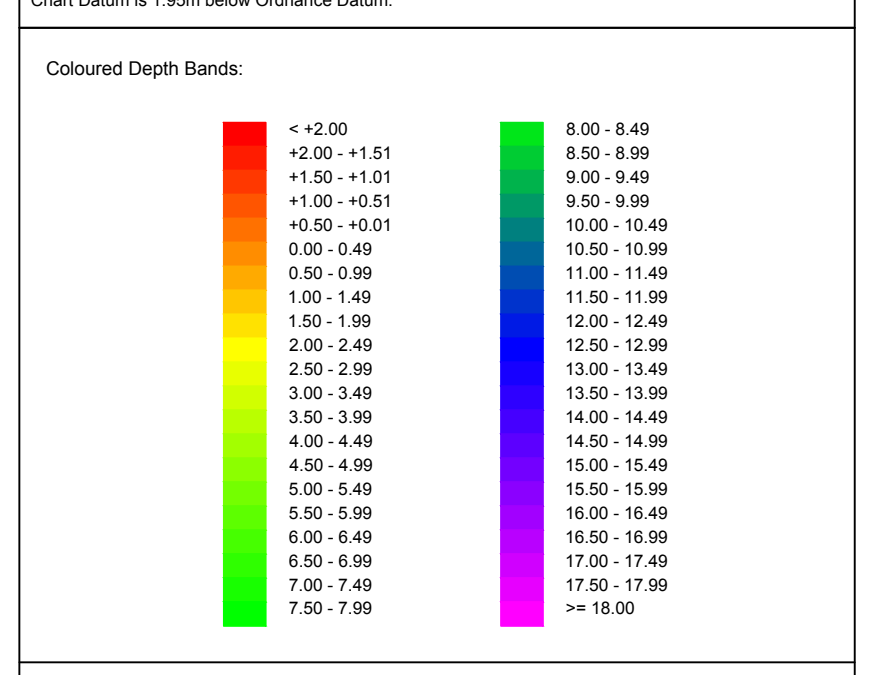


Link Feature Legend		Point Feature Legend	
Bottom of bank	--- (dashed blue)	Culvert	Cg ^h
Building	--- (dashed orange)	Post	P
Fence	--- (dashed purple)	Spot level	+
Top of bank	--- (dashed red)		
Verge	--- (dashed black)		
Wall	--- (dashed grey)		

Survey Parameters & Equipment	
Survey Vessel:	Echoboot
Positioning System:	Trimble Applinx POS MV
GPS Correction Source:	Corrections From Base Station
Echosounder:	R2Sonic 2020 Multibeam System 400kHz
Motion Compensator:	Trimble Applinx POS MV
Positioning System Spheroid & Datum:	ETRS89
Grid System:	National Grid of Great Britain
Geod Model:	OSGM15
Transformation Parameters:	OSTN15
Spheroid:	Airy
Semi Major Axis:	6377563.396
Flattening (1/f):	299.324964600
Vertical Datum (Topographic):	Chart Datum
Vertical Datum (Hydrographic):	Chart Datum
Distance Unit:	Metre



Notes:
Horizontal and vertical datums were referenced to control stations on site.

Heights in metres above Ordnance Datum (Port Appin)			
MHWS	MHWN	MLWN	MLWS
4.2	3.1	1.9	0.8

CONTROL STATION COORDINATES (CD)			
STN	EASTING	NORTHING	LEVEL
1	190642.357	743510.812	5.694
2	190628.334	743526.338	5.410

A	3.7.19	REDRAWN FOR PLANNING APPLICATION.	G.B.	H.A.
REV	DATE	REVISION DESCRIPTION	DRN	VER

THIS DRAWING IS COPYRIGHT. DO NOT SCALE FROM THIS DRAWING.

Arch Henderson 1919

Civil Engineers
Structural Engineers
Principal Designers
Architects
Geotechnical services
Environmental services

142 St. Vincent Street, Glasgow G2 5LA
Tel: 0141 227 3060 - Fax: 0141 249 9542
www.arch-henderson.co.uk - email: glasgow@arch-henderson.co.uk

Offices in: Aberdeen, Dundee, Falkland Islands, Glasgow, Inverness, Lewick, Southampton, Stromness and Thurso

PROJECT :
**ISLE OF ERIKA HOTEL
PONTOON DEVELOPMENT**

TITLE :
EXISTING SITE AND BATHYMETRIC SURVEY

DRAWN : G.B.	DATE : 14.6.19	VERIFIED : H.A.	APPROVED :
SCALE : (A1) 1:250		DRAWING STATUS : PLANNING	

DRAWING No : 185032-013	REV : A
----------------------------	------------

COPYRIGHT RESERVED ©

DO NOT SCALE