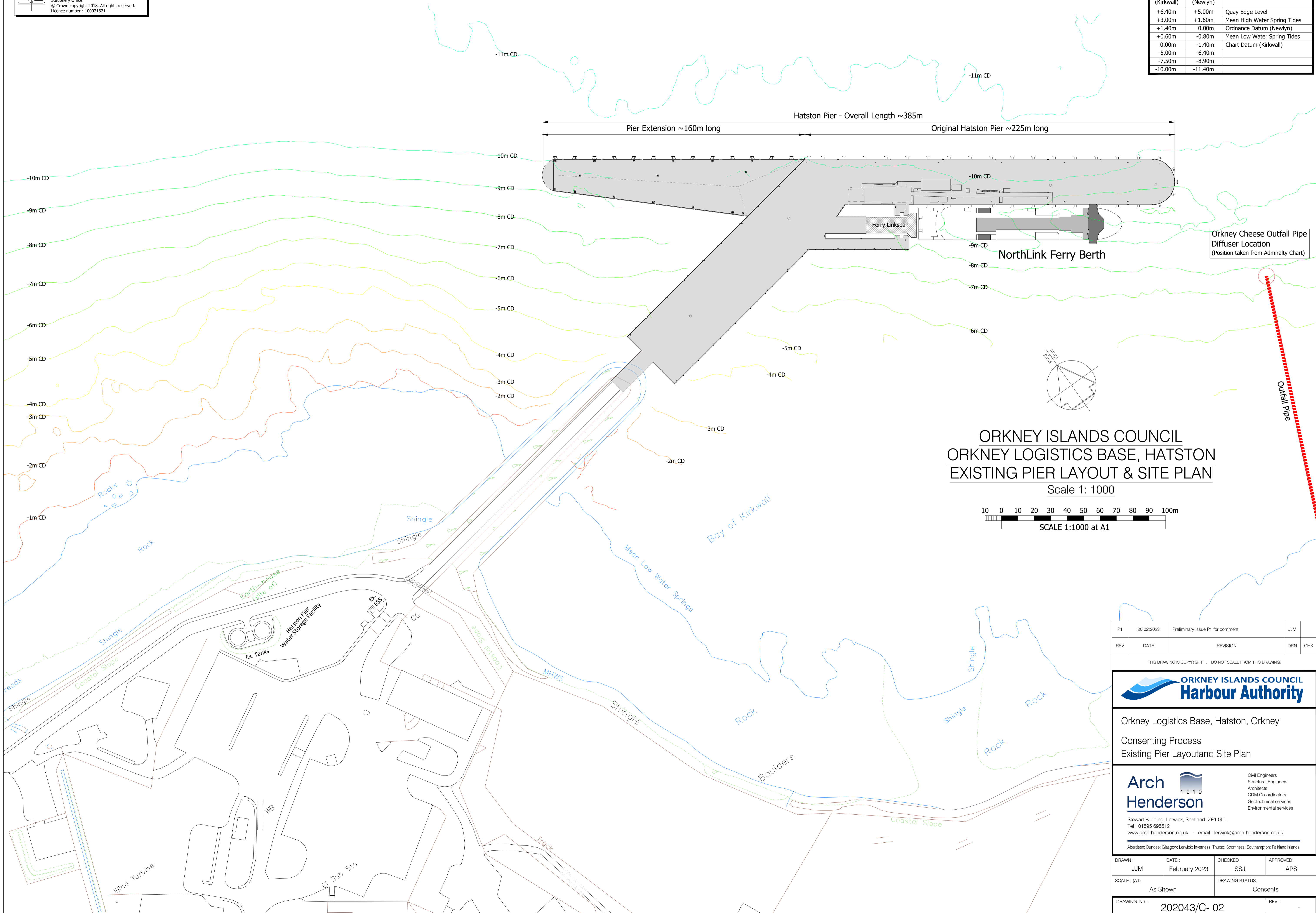


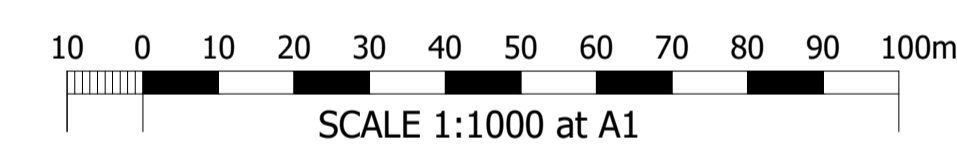
Reproduced by permission of Ordnance Survey® on behalf of The Controller of Her Majesty's Stationery Office.  
 © Crown copyright 2018. All rights reserved.  
 Licence number : 100021621

Chart Datum (Kirkwall)	Ordnance Datum (Newlyn)	Quay Heights and Tide Data Hatston Pier, Kirkwall
+6.40m	+5.00m	Quay Edge Level
+3.00m	+1.60m	Mean High Water Spring Tides
+1.40m	0.00m	Ordnance Datum (Newlyn)
+0.60m	-0.80m	Mean Low Water Spring Tides
0.00m	-1.40m	Chart Datum (Kirkwall)
-5.00m	-6.40m	
-7.50m	-8.90m	
-10.00m	-11.40m	



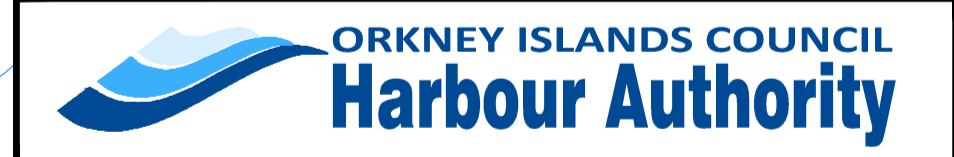
ORKNEY ISLANDS COUNCIL  
 ORKNEY LOGISTICS BASE, HATSTON  
 EXISTING PIER LAYOUT & SITE PLAN

Scale 1: 1000



P1	20-02-2023	Preliminary Issue P1 for comment	JJM
REV	DATE	REVISION	DRN
			CHK

THIS DRAWING IS COPYRIGHT . DO NOT SCALE FROM THIS DRAWING.



Orkney Logistics Base, Hatston, Orkney  
 Consenting Process  
 Existing Pier Layout and Site Plan

**Arch Henderson** 1919  
 Civil Engineers  
 Structural Engineers  
 Architects  
 CDM Co-ordinators  
 Geotechnical services  
 Environmental services  
 Stewart Building, Lerwick, Shetland, ZE1 0LL.  
 Tel : 01595 695512  
 www.arch-henderson.co.uk - email : lerwick@arch-henderson.co.uk  
 Aberdeen; Dundee; Glasgow; Lerwick; Inverness; Thurso; Stromness; Southampton; Falkland Islands

DRAWN :	DATE :	CHECKED :	APPROVED :
JJM	February 2023	SSJ	APS

SCALE : (A1)	DRAWING STATUS :
As Shown	Consents

DRAWING No : 202043/C- 02 REV : -