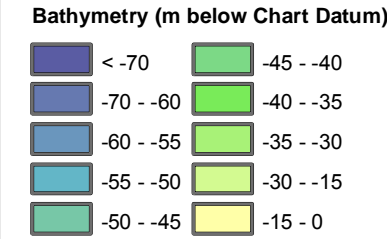


- Legend**
- Wind Farm Project Boundary
 - Transmission Asset Project
 - Immediate Study Area
 - Firth of Forth Round 3 Zone 2



Coordinate System
UTM Zone 30 North (WGS84)
Projection: Transverse Mercator
Central Meridian: -3° East
Scale Factor: 0.9996
Latitude of Origin: 0° North
False Easting: 500000.0
False Northing: 0.0
Reference Spheroid: WGS84
Semi-major Axis: 6378137.0
Inverse Flattening: 298.2572236



Title:
Firth of Forth Offshore Wind Farm



Figure / Drawing Title:
BATHYMETRY

Figure/Drawing Number: **FIGURE 7.5**

UNLESS THE REVISION IS B OR HIGHER THE DRAWING IS NOT TO BE
USED FOR DESIGN OR CONSTRUCTION

REV	DATE	DESCRIPTION	BY	CKD	APPR DEV	APPR ENG
B1	15 OCT 12	FOR FORMAL SUBMISSION	AZ	DB	PP	NC

© British Crown and SeaZone Solutions Limited, 2012. Data License Agreement
122008.001 All rights reserved.