

# Site Extents

## Point A

**Degrees Minutes (WGS84)** N 55° 51' 55.0476 E -4° 18' 45.1188

Lat: 55 ° 51' 55.0476 " (N) Lon: -4 ° 18' 45.1188 " (E)

**Degrees Minutes Seconds (WGS84)** N 55° 51' 55.0476 E -4° 18' 45.1188

Lat: 55 ° 51' 55.0476 " (N) Lon: -4 ° 18' 45.1188 " (E)

## Point B

**Degrees Minutes (WGS84)** N 55° 51' 54.99 E -4° 18' 45.2844

Lat: 55 ° 51' 54.99 " (N) Lon: -4 ° 18' 45.2844 " (E)

**Degrees Minutes Seconds (WGS84)** N 55° 51' 54.99 E -4° 18' 45.2844

Lat: 55 ° 51' 54.99 " (N) Lon: -4 ° 18' 45.2844 " (E)

## Point C

**Degrees Minutes (WGS84)** N 55° 51' 55.152 E -4° 18' 45.1188

Lat: 55 ° 51' 55.152 " (N) Lon: -4 ° 18' 45.1188 " (E)

**Degrees Minutes Seconds (WGS84)** N 55° 51' 55.152 E -4° 18' 45.1188

Lat: 55 ° 51' 55.152 " (N) Lon: -4 ° 18' 45.1188 " (E)

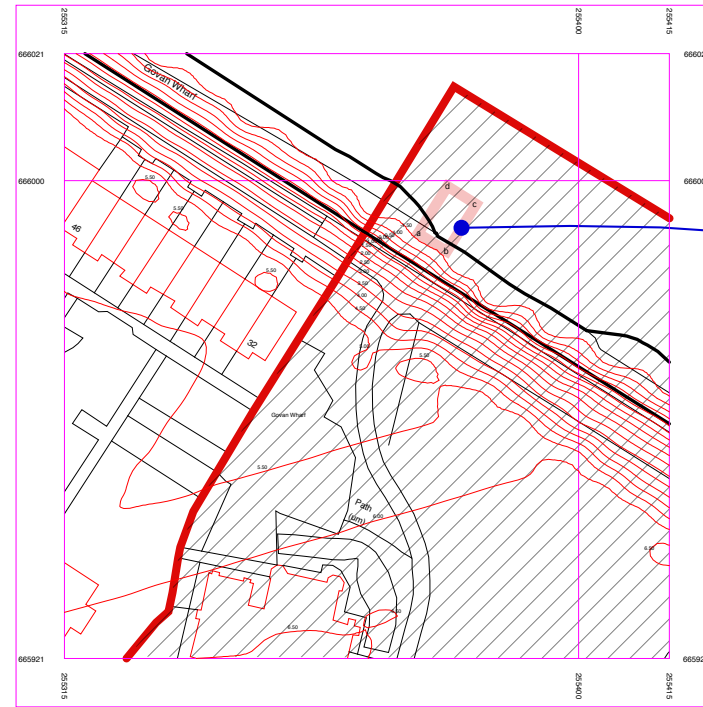
## Point D

**Degrees Minutes (WGS84)** N 55° 51' 55.152 E -4° 18' 45.1188

Lat: 55 ° 51' 55.152 " (N) Lon: -4 ° 18' 45.1188 " (E)

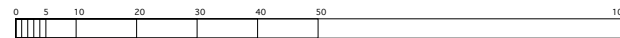
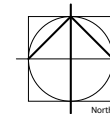
**Degrees Minutes Seconds (WGS84)** N 55° 51' 55.152 E -4° 18' 45.1188

Lat: 55 ° 51' 55.152 " (N) Lon: -4 ° 18' 45.1188 " (E)



Hatched area indicates Govan Conservation Area (GCC) in relation to the proposed development

MHWS at Site: 4.4m



Ordnance Survey  
Serial number: 261901  
© Crown copyright and database right 2023  
Ordnance Survey licence 100048957  
Reproduction in whole or in part is prohibited  
without the prior permission of Ordnance Survey

Govan Heritage Trust  
Site for Extraction Pump  
River Source Heat Pump Development

Scale: 1 1250 at A4  
Date: 12 04 2023  
Drawing Nr: GHT LP 001  
Rev A: 24 04 2023/ WGS84 Extents added