

D BURGHEAD

SCALE 1: 6250

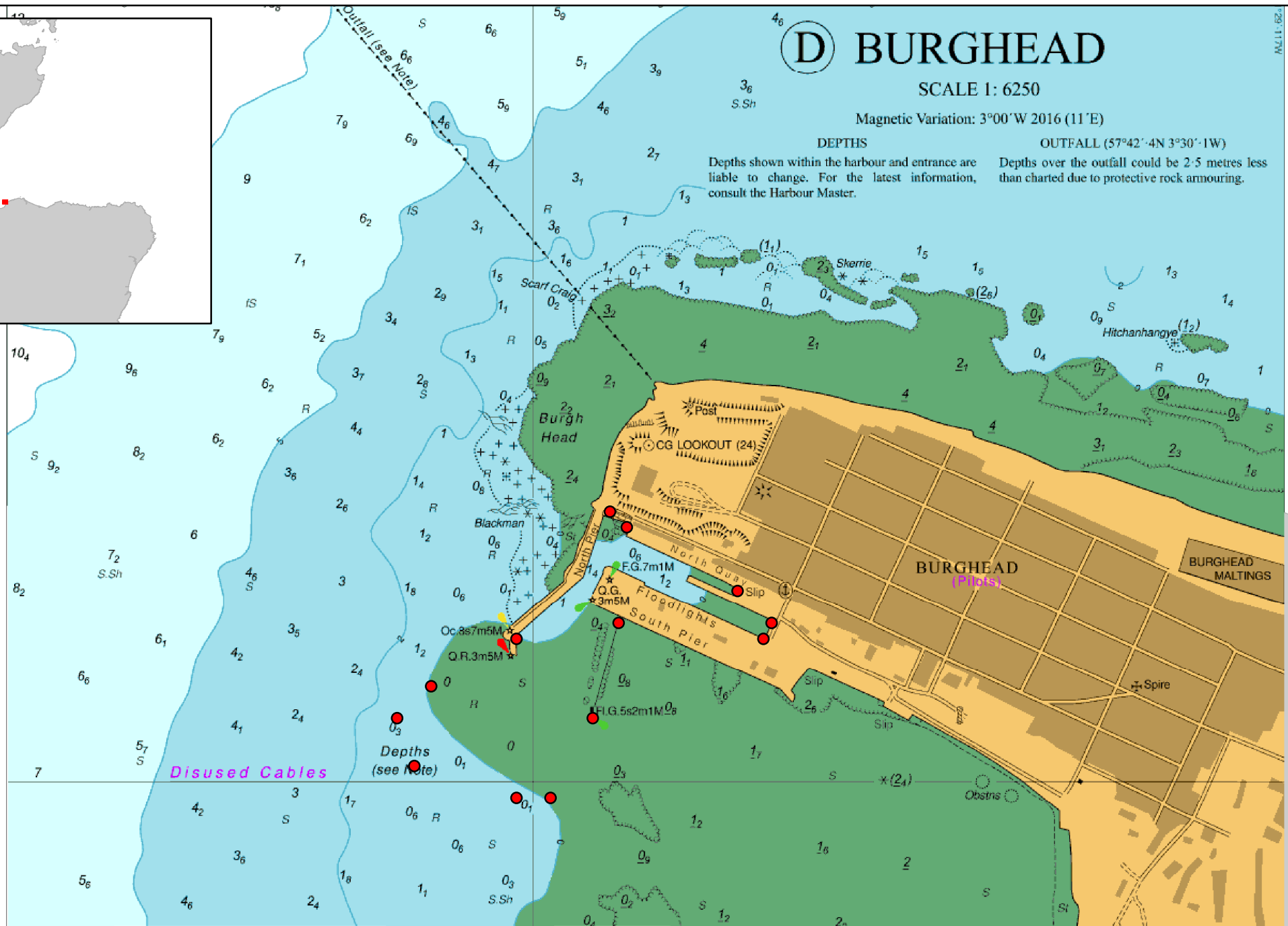
Magnetic Variation: 3°00'W 2016 (11'E)

DEPTHS

Depths shown within the harbour and entrance are liable to change. For the latest information, consult the Harbour Master.

OUTFALL (57°42'4N 3°30'1W)

Depths over the outfall could be 2.5 metres less than charted due to protective rock armouring.



Disused Cables

Depths (see note)

Feet 1000 500 0 1000 2000 Feet

Metres 100 0 500 1000 Metres

N.Miles 0-1 0

NOT FOR NAVIGATION. Created by Scottish Government (Marine Scotland) 2021.
© Crown Copyright, All rights reserved. OceanWise Licence No. EK001-20140401. Ordnance Survey Licence No. 100024655.