



Grutness Pier Improvement Works

A.1 Grutness Dredging Map

On behalf of



**Shetland
Islands
Council**

Project Ref:332511168| Rev: A | Date: November 2023

Front Cover Photograph provided by Brian Gray

Registered Office: Buckingham Court Kingsmead Business Park, London Road, High Wycombe, Buckinghamshire, HP11 1JU
Office Address: 3rd Floor, Capital Square, 58 Morrison Street, Edinburgh EH3 8BP
T: +44 (0)141 352 2360 E: info.Glasgow@stantec.com

439000

440000

441000

442000

11110000

11110000

11100000

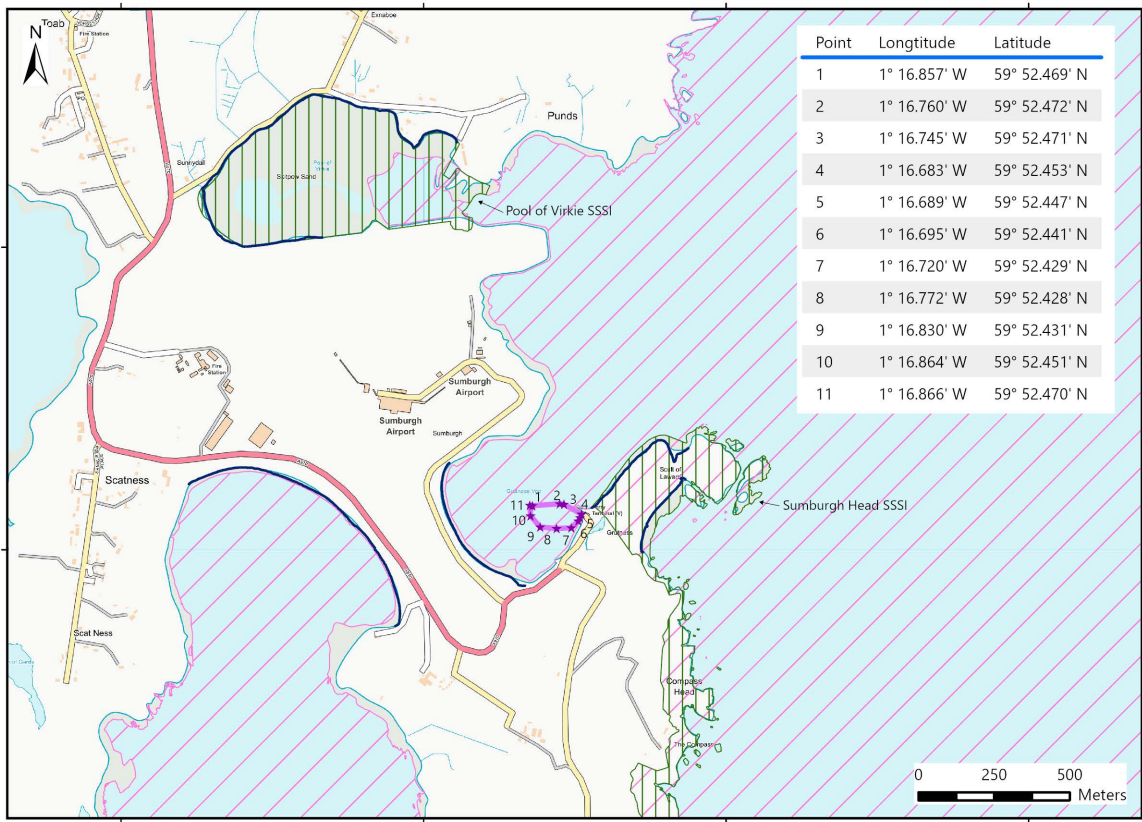
11100000

439000

440000

441000

442000



Point	Longitude	Latitude
1	1° 16.857' W	59° 52.469' N
2	1° 16.760' W	59° 52.472' N
3	1° 16.745' W	59° 52.471' N
4	1° 16.683' W	59° 52.453' N
5	1° 16.689' W	59° 52.447' N
6	1° 16.695' W	59° 52.441' N
7	1° 16.720' W	59° 52.429' N
8	1° 16.772' W	59° 52.428' N
9	1° 16.830' W	59° 52.431' N
10	1° 16.864' W	59° 52.451' N
11	1° 16.866' W	59° 52.470' N

★ Dredge boundary points

▭ Dredge boundary

▨ Site of Special Scientific Interest (SSSI)

▨ Sumburgh Head SPA

— Mean High Water Spring line (MHWS)

Date	By	QA
Nov 23	HKG	CRO

Coordinate System
British National Grid

Projection
Transverse Mercator

Project No. 5177
Fig_Designations_v2_A5