

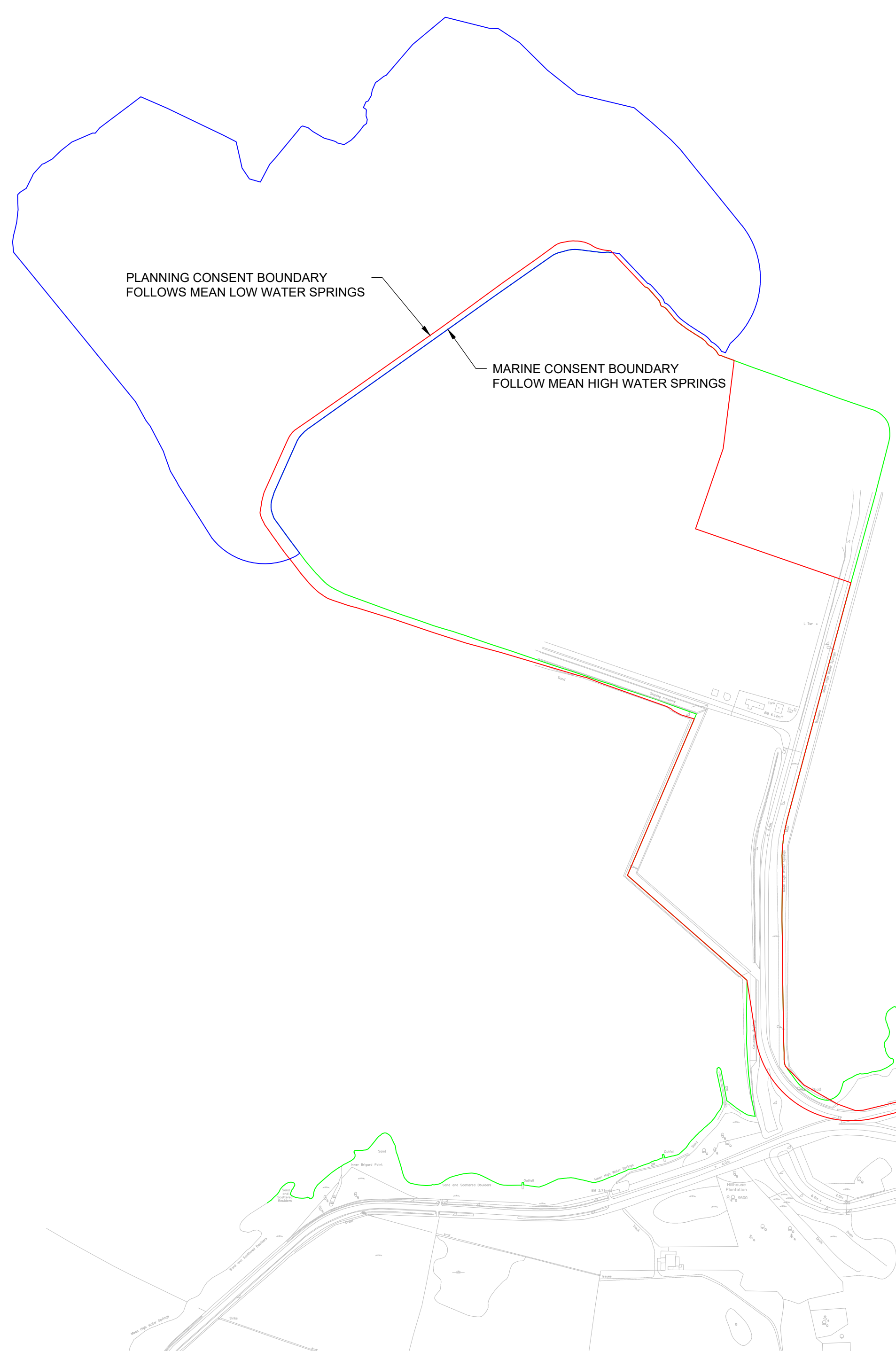
# TENDER DRAWING SITE INFORMATION

### NOTES

1. ALL DIMENSIONS IN MILLIMETRES UNLESS NOTED OTHERWISE.
2. ALL LEVELS ARE RELATIVE TO CHART DATUM.
3. THIS DRAWING TO BE READ IN CONJUNCTION WITH ALL RELEVANT ENGINEER'S AND SPECIALIST'S DRAWINGS AND THE CONTRACT SPECIFICATION DOCUMENTS. THE CLIENT IS TO BE ADVISED OF ANY DISCREPANCIES ENCOUNTERED ON SITE DURING CONSTRUCTION WORKS.

### LEGEND

- MARINE CONSENT BOUNDARY
- TERRESTRIAL PLANNING CONSENT BOUNDARY
- MEAN HIGH WATER SPRINGS



P02	17.05.2024	ISSUED FOR TENDER	AH	AK
P01	16.04.2024	ISSUED FOR FINAL COMMENTS	AH	MS
REV	DATE	REVISION DESCRIPTION	DRN	VER

THIS DRAWING IS COPYRIGHT © DO NOT SCALE FROM THIS DRAWING.



Civil Engineers  
Structural Engineers  
Principal Designers  
Architects  
Geotechnical services  
Environmental services

142 St. Vincent Street, Glasgow G2 5LA.  
Tel : 0141 227 3060 • Fax : 0141 248 9542  
www.arch-henderson.co.uk • email : glasgow@arch-henderson.co.uk

Offices in : Aberdeen, Dundee, Falkland Islands, Glasgow, Inverness, Lerwick, Southampton, Stromness and Thurso

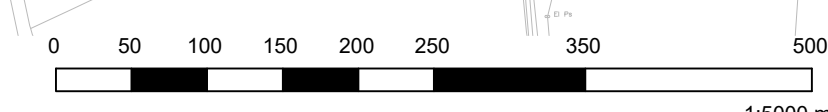
PROJECT :  
**CLYDEPORT OPERATIONS LTD  
HUNTERSTON CONSTRUCTION YARD**

TITLE :  
**CONSENTING BOUNDARIES PLAN  
MARINE AND PLANNING**

DRAWN : AH	DATE : 15.03.2024	VERIFIED : MW	APPROVED : KM
---------------	----------------------	------------------	------------------

SCALE : (A1) 1:5000	DRAWING STATUS : S4
------------------------	------------------------

DRAWING No : HMY-AHN-00-00-DR-C-0001	REV : P02
---	--------------



DO NOT SCALE