

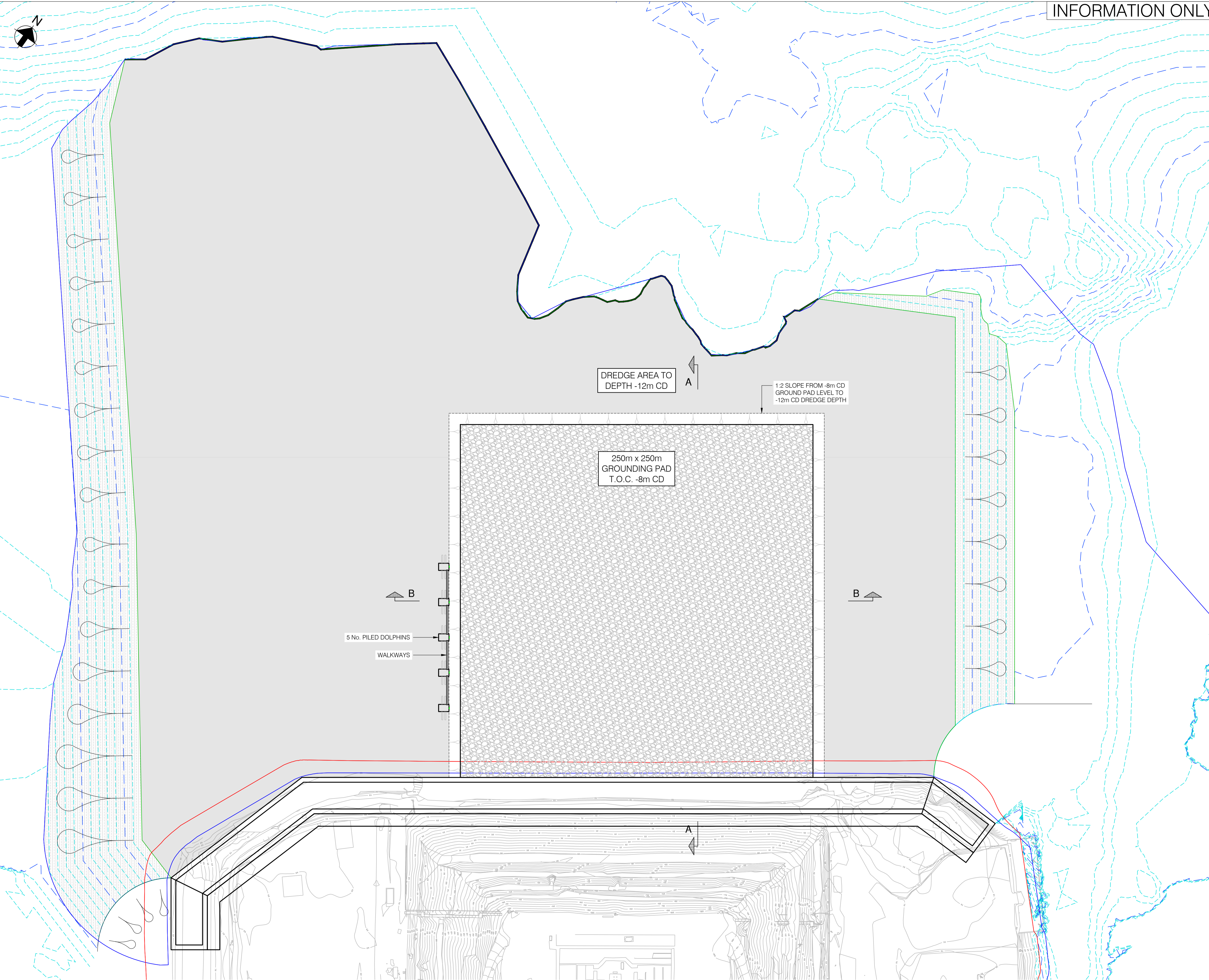
INFORMATION ONLY

- NOTES**
1. ALL DIMENSIONS IN MILLIMETRES UNLESS NOTED OTHERWISE.
 2. ALL LEVELS ARE RELATIVE TO CHART DATUM.
 3. THIS DRAWING TO BE READ IN CONJUNCTION WITH ALL RELEVANT ENGINEERS AND SPECIALISTS DRAWINGS AND THE CONTRACT SPECIFICATION DOCUMENTS. THE CLIENT IS TO BE ADVISED OF ANY DISCREPANCIES ENCOUNTERED ON SITE DURING CONSTRUCTION WORKS.

- LEGEND**
- MARINE CONSENT BOUNDARY
 - TERRESTRIAL PLANNING CONSENT BOUNDARY

- REFERENCE DRAWINGS**
- HMY-AHN-00-00-DR-C-9101 - 570m QUAY WALL SECTIONS

Tide level in metres above Chart Datum (Millport)			
MHWS	MHWN	MLWN	MLWS
3.40	2.70	1.00	0.40



REV	DATE	REVISION DESCRIPTION	DRN	VER
P01	23.05.2024	ISSUED FOR ENVIRONMENTAL IMPACT ASSESSMENT	AH	KM

THIS DRAWING IS COPYRIGHT - DO NOT SCALE FROM THIS DRAWING.

Arch Henderson 1919

Civil Engineers
Structural Engineers
Principal Designers
Architects
Geotechnical services
Environmental services

142 St Vincent Street, Glasgow G2 5LA
Tel: 0141 227 3060 - Fax: 0141 248 9542
www.arch-henderson.co.uk - email: glasgow@arch-henderson.co.uk

Offices in: Aberdeen, Dundee, Fife/Highland Islands, Glasgow, Inverness, Lewick, Southampton, Storness and Thurso

PROJECT :
**CLYDEPORT OPERATIONS LTD
HUNTERSTON CONSTRUCTION YARD**

TITLE :
**570m QUAY WALL
GENERAL ARRANGEMENT**

DRAWN : AH	DATE : 13.05.2024	VERIFIED : MS	APPROVED : KM
SCALE : (A1) 1:1250		DRAWING STATUS : S0	

DRAWING No: HMY-AHN-00-00-DR-C-9100 REV: P01



DO NOT SCALE