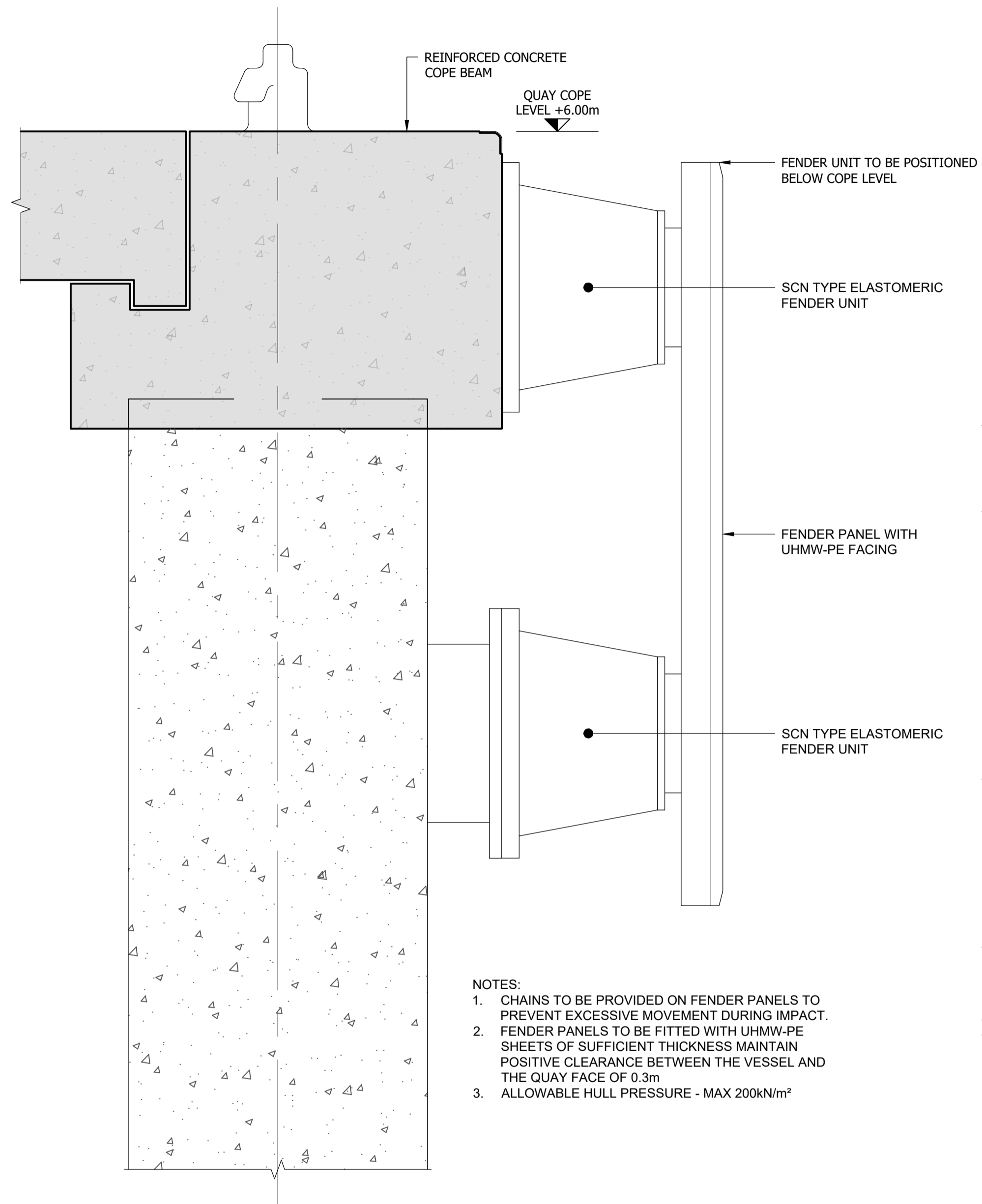


NOTES

1. ALL DIMENSIONS IN MILLIMETRES UNLESS NOTED OTHERWISE.
2. ALL LEVELS ARE RELATIVE TO CHART DATUM.
3. THIS DRAWING TO BE READ IN CONJUNCTION WITH ALL RELEVANT DRAWINGS SPECIFICATIONS.



TYPICAL FENDER SECTION

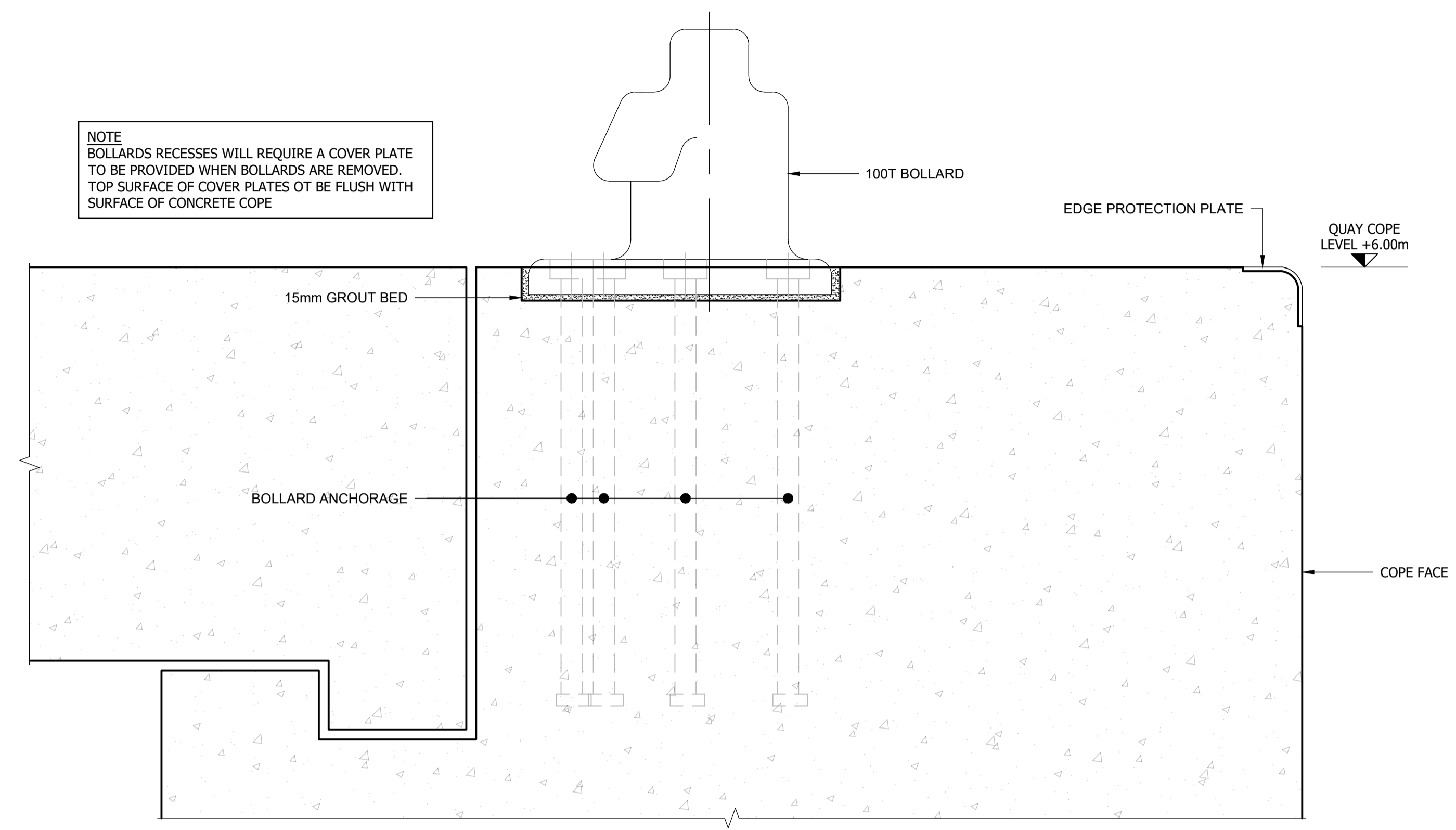
1:25

NOTES:

1. CHAINS TO BE PROVIDED ON FENDER PANELS TO PREVENT EXCESSIVE MOVEMENT DURING IMPACT.
2. FENDER PANELS TO BE FITTED WITH UHMW-PE SHEETS OF SUFFICIENT THICKNESS MAINTAIN POSITIVE CLEARANCE BETWEEN THE VESSEL AND THE QUAY FACE OF 0.3m
3. ALLOWABLE HULL PRESSURE - MAX 200kN/m²

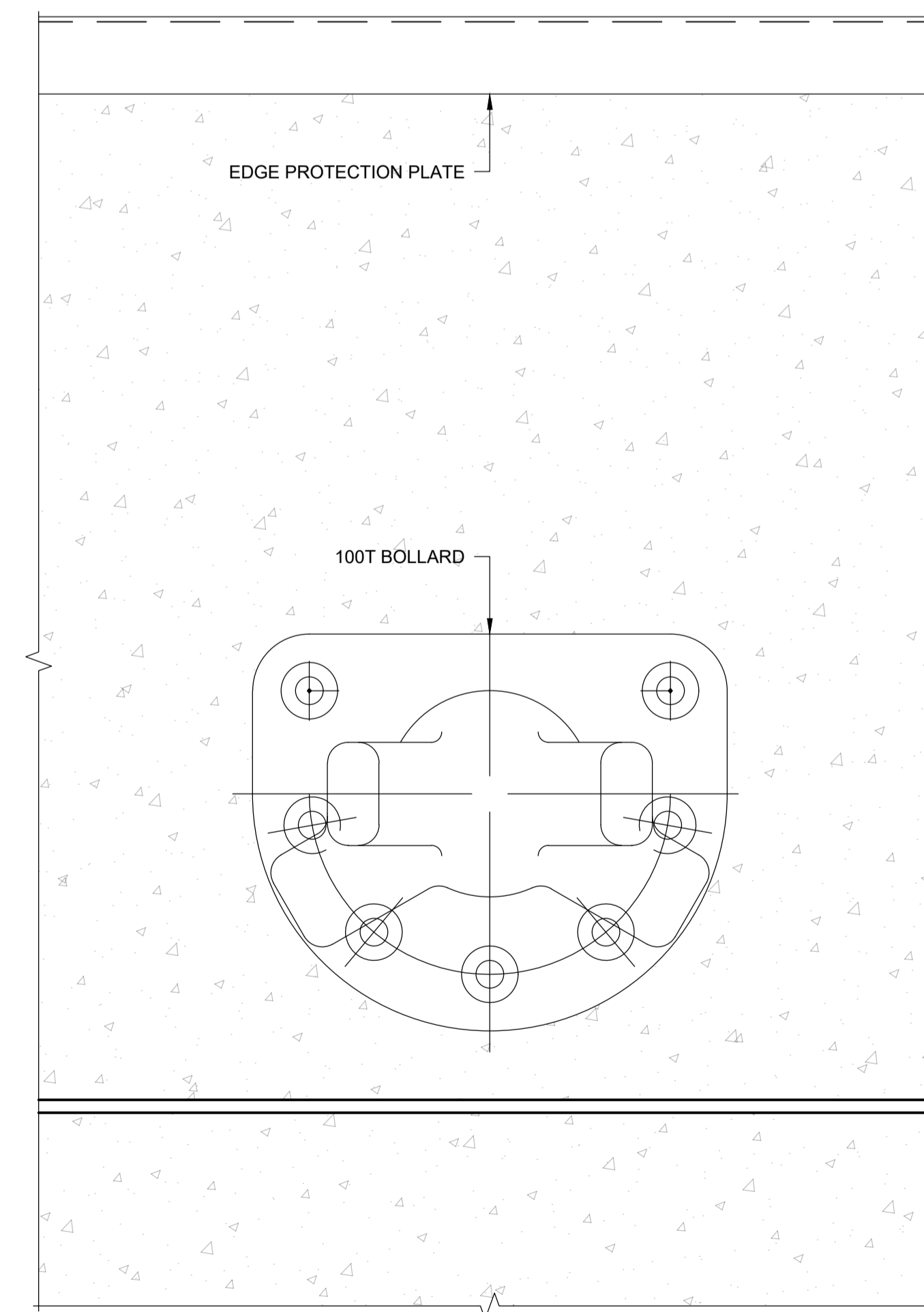
H.A.T.	+4.00m
M.H.W.S.	+3.40m
O.D.	+1.62m
M.L.W.S.	+0.40m
C.D.	0.00m
L.A.T.	-0.10m

NOTE
BOLLARDS RECESSES WILL REQUIRE A COVER PLATE TO BE PROVIDED WHEN BOLLARDS ARE REMOVED. TOP SURFACE OF COVER PLATES OT BE FLUSH WITH SURFACE OF CONCRETE COPE



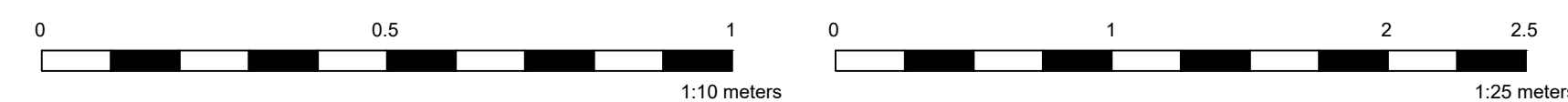
TYPICAL BOLLARD SECTION

1:10



TYPICAL BOLLARD PLAN

1:10



P01	23.05.2024	ISSUED FOR MARINE CONSTRUCTION LICENCE APPLICATION	AH	KM
REV	DATE	REVISION DESCRIPTION	DRN	VER

THIS DRAWING IS COPYRIGHT © DO NOT SCALE FROM THIS DRAWING.

Arch Henderson 1919

Civil Engineers
Structural Engineers
Principal Designers
Architects
Geotechnical services
Environmental services

142 St. Vincent Street, Glasgow G2 5LA.
Tel : 0141 227 3060 - Fax : 0141 248 9542
www.arch-henderson.co.uk - email : glasgow@arch-henderson.co.uk

Offices in : Aberdeen, Dundee, Falkland Islands, Glasgow, Inverness, Lerwick, Southampton, Stromness and Thurso

PROJECT :
**CLYDEPORT OPERATIONS LTD
HUNTERSTON CONSTRUCTION YARD**

TITLE :
**450m QUAY WALL TYPICAL DETAILS
FENDERS AND BOLLARDS**

DRAWN :	DATE :	VERIFIED :	APPROVED :
AH	21.05.2024	MS	KM

SCALE : (A1)	DRAWING STATUS :
1:25 U.N.O.	S0

DRAWING No :	REV :
HMY-AHN-00-00-DR-C-9210	P01