

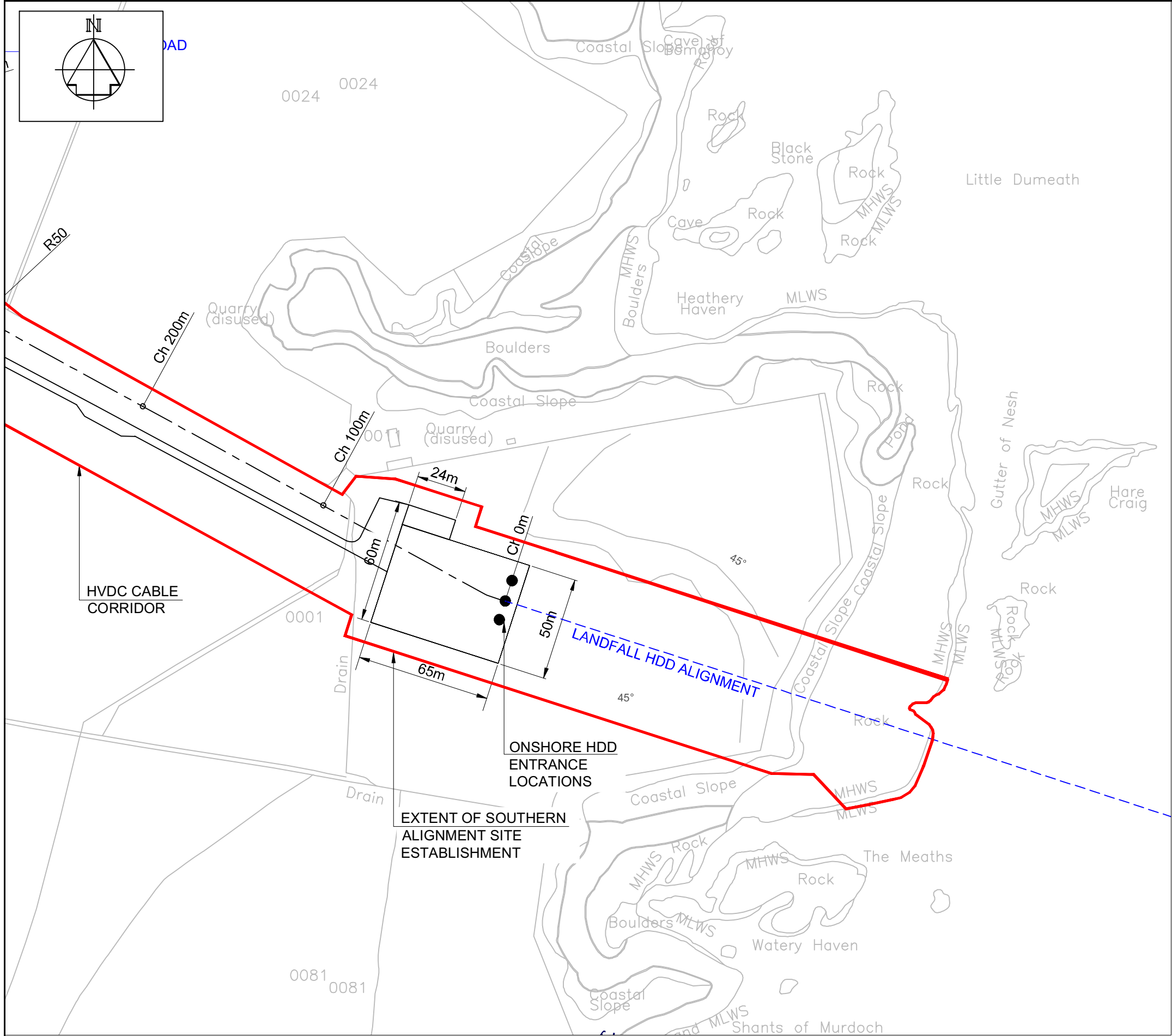
LEGEND

- PROPOSED WATER MAIN
- INDICATIVE HVDC CABLE ROUTE(S)
- RED LINE BOUNDARY
- PREVIOUSLY CONSENTED RED LINE BOUNDARY (REF: APP/2015/1121)
- OUTLINE OF PROPOSED CONVERTER BUILDING
- EXTENT OF LANDSCAPING BUNDS

NOTES

TO BE READ IN CONJUNCTION WITH DRAWING Nos. 0001-01, 0001-02, 0001-03 & 0001-04

2	RFU - UPDATED OS LICENSE NUMBER	24/07/2018	JAM	STM	GMC
1	RFU - UPDATED DRAWING AND LEGEND	23/07/2018	JAM	STM	GMC
0	IFU - FIRST ISSUE	10/07/2018	EH	GJD	GJD
REV NO	ISSUE REASON	DATE	PREPARED	CHECKED	APPROVED
PROJECT			NORTH CONNECT		
DRAWING TITLE			HVDC ONSHORE CABLE ROUTE MASTERPLAN		
DRAWING NO			NCGEN-NCT-Z-XE-0002-01		
SHEET	REVISION	FORMAT	SCALE	GEODETTIC REFERENCE SYSTEM	DRAWING PRODUCER DOC. NO./REV
01	2	A3	1:10000		DRAWING PRODUCER DOC. TAG NO.



LEGEND

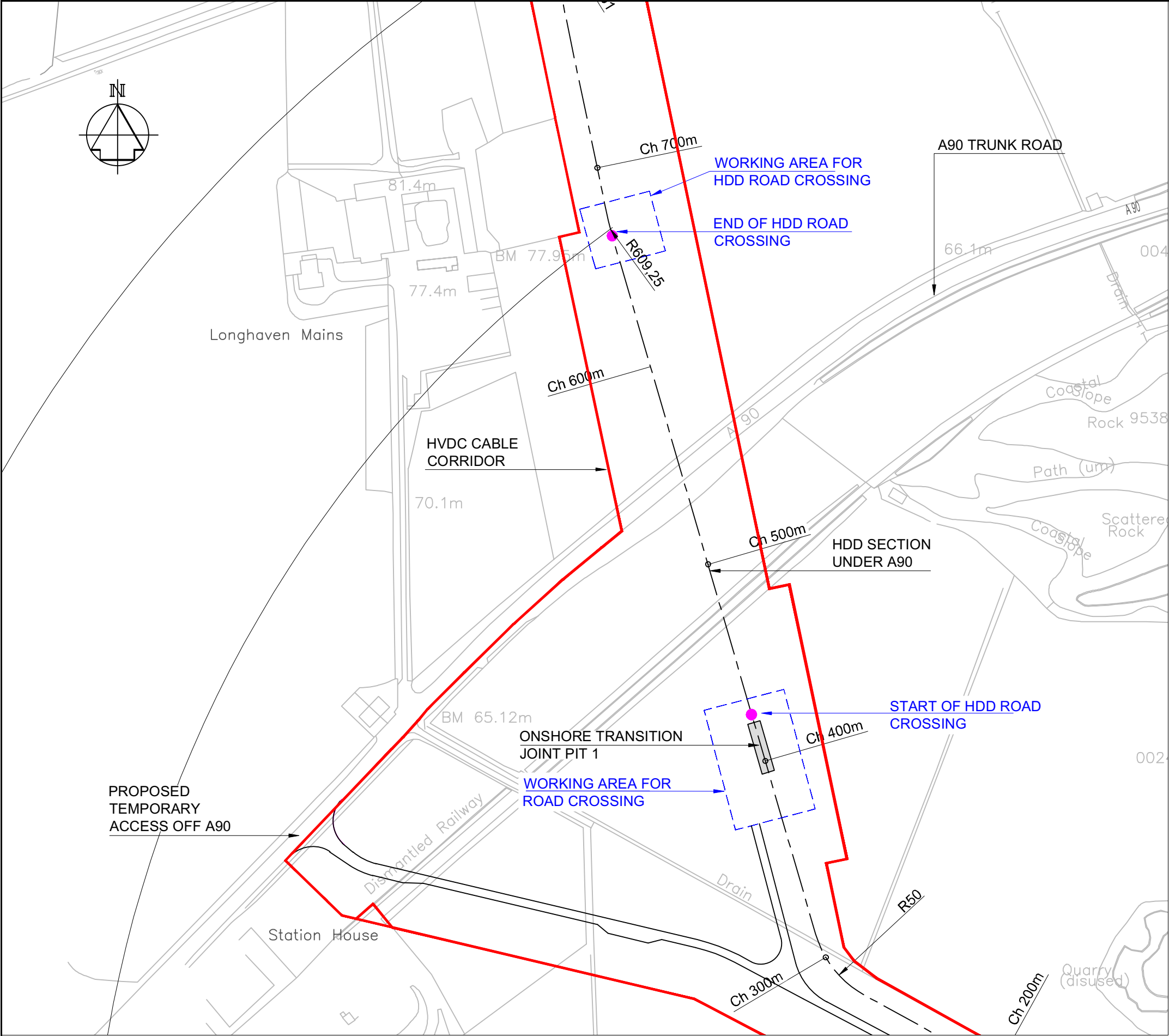
- PROPOSED LANDFALL HDD ALIGNMENT
- INDICATIVE CABLE ROUTE
- RED LINE BOUNDARY

NOTES

1. EARTHING REQUIREMENTS ALONG CABLE ROUTE TO BE CONFIRMED

TO BE READ IN CONJUNCTION WITH DRAWING Nos. 0002-01, 0001-02, 0001-03 & 0001-04

2	RFU - UPDATED OS LICENSE NUMBER	24/07/2018	JAM	STM	GMC
1	RFU - UPDATED DRAWING AND LEGEND	23/07/2018	JAM	STM	GMC
0	IFU - FIRST ISSUE	10/07/2018	EH	GJD	GJD
REV NO	ISSUE REASON	DATE	PREPARED	CHECKED	APPROVED
PROJECT			NORTH CONNECT		
DRAWING TITLE			HVDC ONSHORE CABLE GENERAL ARRANGEMENT SHEET 1 OF 4		
DRAWING NO			NCGEN-NCT-Z-XD-0001-01		
SHEET	REVISION	FORMAT	SCALE	GEODETTIC REFERENCE SYSTEM	DRAWING PRODUCER DOC. NO./REV
01	2	A3	1:2000		DRAWING PRODUCER DOC. TAG NO.
This document contains confidential information. Not to be copied to third parties without written authorization. © Copyright NorthConnect IS - All rights reserved. The sole responsibility of this publication lies with the author. The European Union is not responsible for any use that may be made of the information contained therein.					



LEGEND

INDICATIVE CABLE ROUTE - - - - -

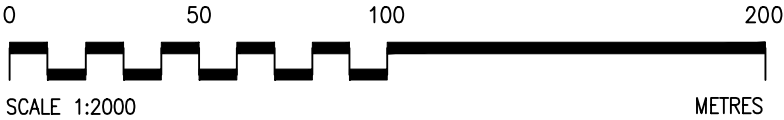
RED LINE BOUNDARY —————

WORKING AREA HDD ROAD CROSSING - - - - -

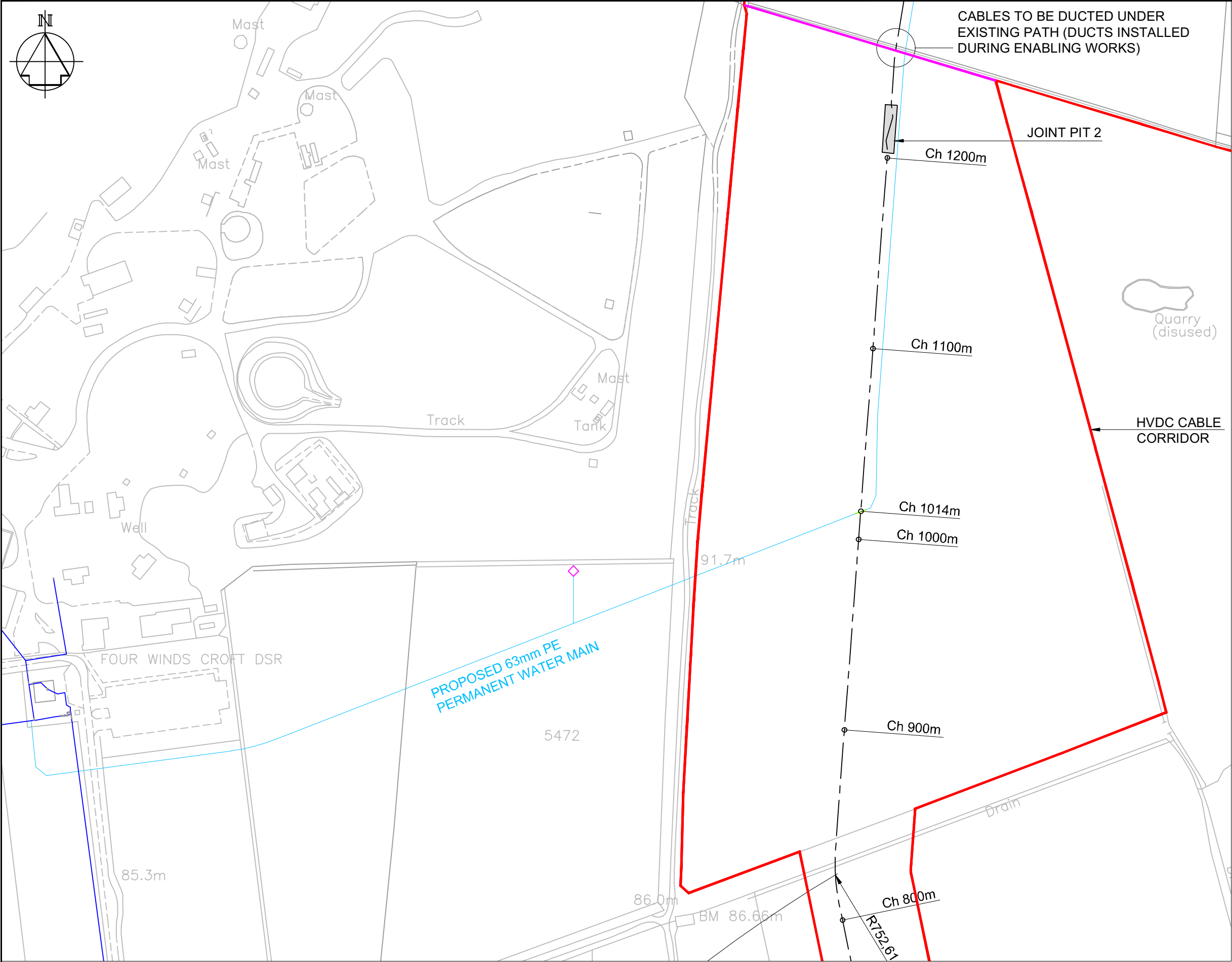
NOTES

1. EARTHING REQUIREMENTS ALONG CABLE ROUTE TO BE CONFIRMED

TO BE READ IN CONJUNCTION WITH DRAWING Nos. 0002-01, 0001-01, 0001-03 & 0001-04



2	RFU - UPDATED OS LICENSE NUMBER	24/07/2018	JAM	STM	GMC
1	RFU - UPDATED DRAWING AND LEGEND	23/07/2018	JAM	STM	GMC
0	IFU - FIRST ISSUE	10/07/2018	EH	GJD	GJD
REV NO	ISSUE REASON	DATE	PREPARED	CHECKED	APPROVED
PROJECT			NORTH CONNECT		
DRAWING TITLE			HVDC ONSHORE CABLE ROUTE GENERAL ARRANGEMENT SHEET 2		
DRAWING NO			NCGEN-NCT-Z-XD-0001-02		
SHEET	REVISION	FORMAT	SCALE	GEODEIC REFERENCE SYSTEM	DRAWING PRODUCER DOC. NO./REV
02	2	A3	1:2000		DRAWING PRODUCER DOC. TAG NO.
This document contains confidential information. Not to be copied to third parties without written authorization. © Copyright NorthConnect IS - All rights reserved. The sole responsibility of this publication lies with the author. The European Union is not responsible for any use that may be made of the information contained therein.					



LEGEND

PROPOSED WATER MAIN

INDICATIVE CABLE ROUTE

RED LINE BOUNDARY

EXISTING WATER MAIN

PREVIOUSLY CONSENTED RED LINE BOUNDARY (REF: APP/2015/1121)

NOTES

1. EARTHING REQUIREMENTS ALONG CABLE ROUTE TO BE CONFIRMED

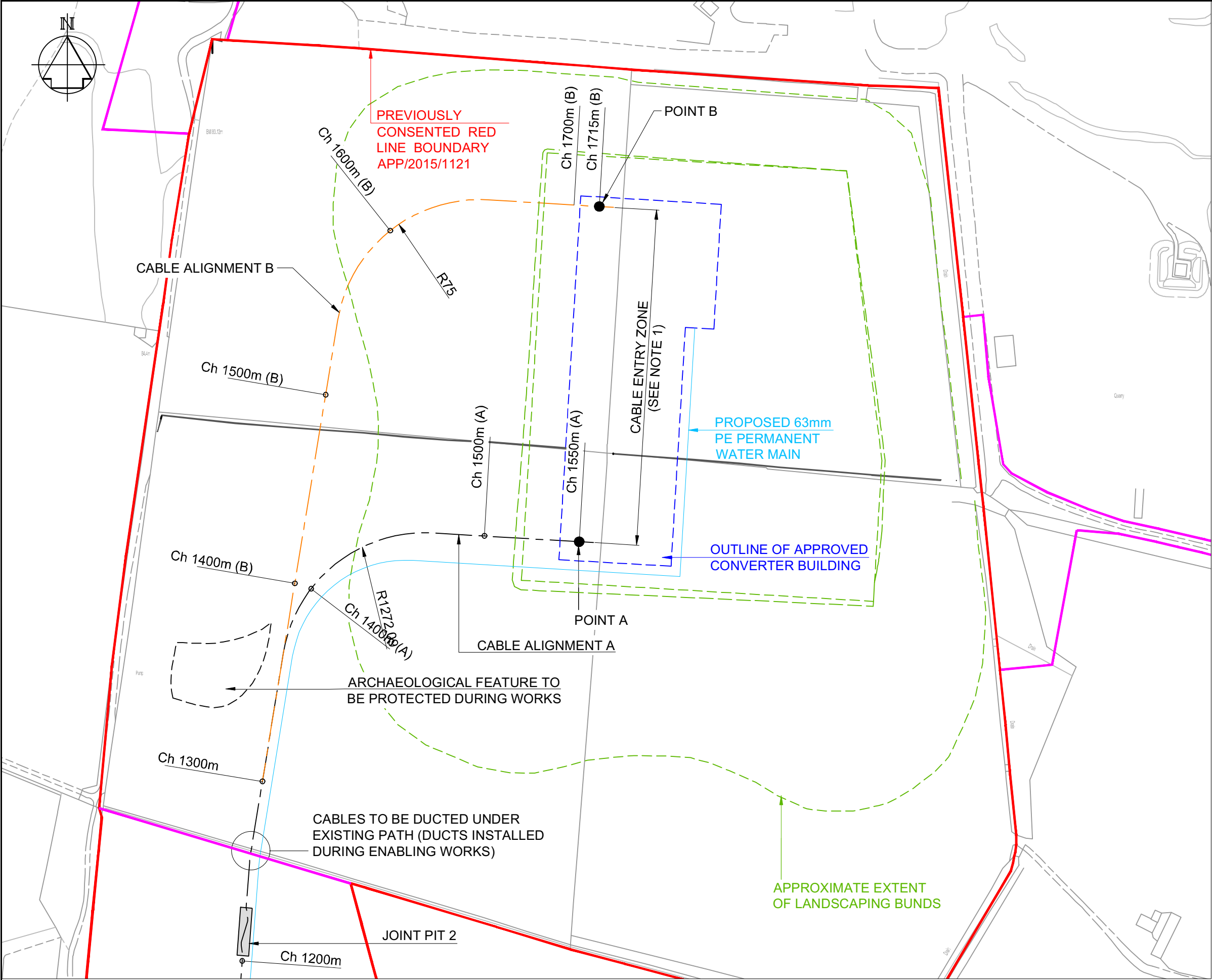
TO BE READ IN CONJUNCTION WITH DRAWING Nos. 0002-01, 0001-01, 0001-02 & 0001-04

0 50 100 200

SCALE 1:2000 METRES

© Crown copyright and database rights 2018 OS 100053143

2	RFU - UPDATED OS LICENSE NUMBER	24/07/2018	JAM	STM	GMC
1	RFU - UPDATED DRAWING AND LEGEND	23/07/2018	JAM	STM	GMC
0	IFU - FIRST ISSUE	10/07/2018	EH	GJD	GJD
REV NO	ISSUE REASON	DATE	PREPARED	CHECKED	APPROVED
PROJECT			NORTH CONNECT		
DRAWING TITLE			HVDC ONSHORE CABLE ROUTE GENERAL ARRANGEMENT SHEET 3		
DRAWING NO			NCGEN-NCT-Z-XD-0001-03		
SHEET	REVISION	FORMAT	SCALE	GEODETTIC REFERENCE SYSTEM	DRAWING PRODUCER DOC. NO./REV
03	2	A3	1:2000		DRAWING PRODUCER DOC. TAG NO.
This document contains confidential information. Not to be copied to third parties without written authorization. © Copyright NorthConnect IS - All rights reserved. The sole responsibility of this publication lies with the author. The European Union is not responsible for any use that may be made of the information contained therein.					



LEGEND

PROPOSED PERMANENT WATER MAIN

INDICATIVE CABLE ROUTE A

INDICATIVE CABLE ROUTE B

RED LINE BOUNDARY

OUTLINE OF PROPOSED CONVERTER BUILDING

PREVIOUSLY CONSENTED RED LINE BOUNDARY (REF: APP/2015/1121)

EXTENT OF LANDSCAPING BUNDS

- NOTES
1.

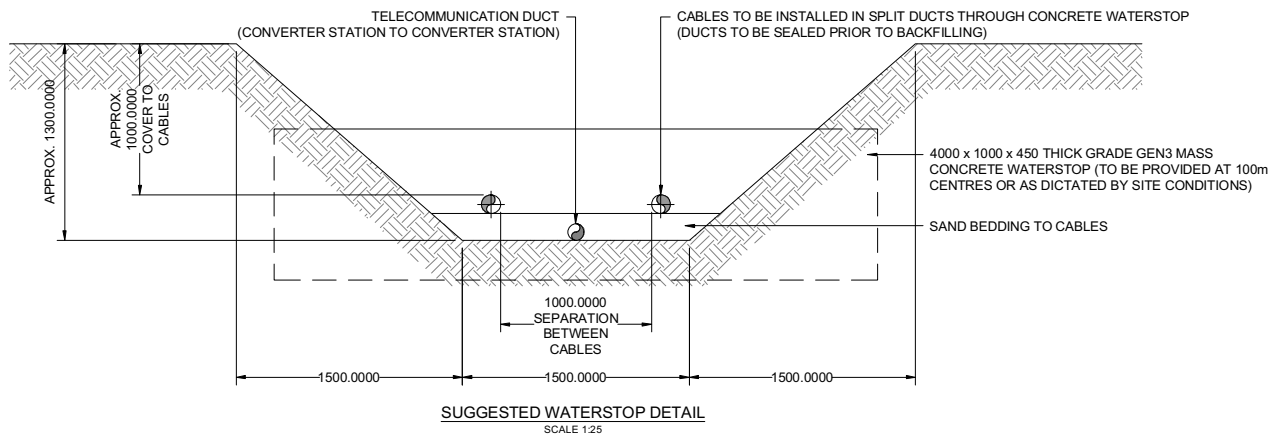
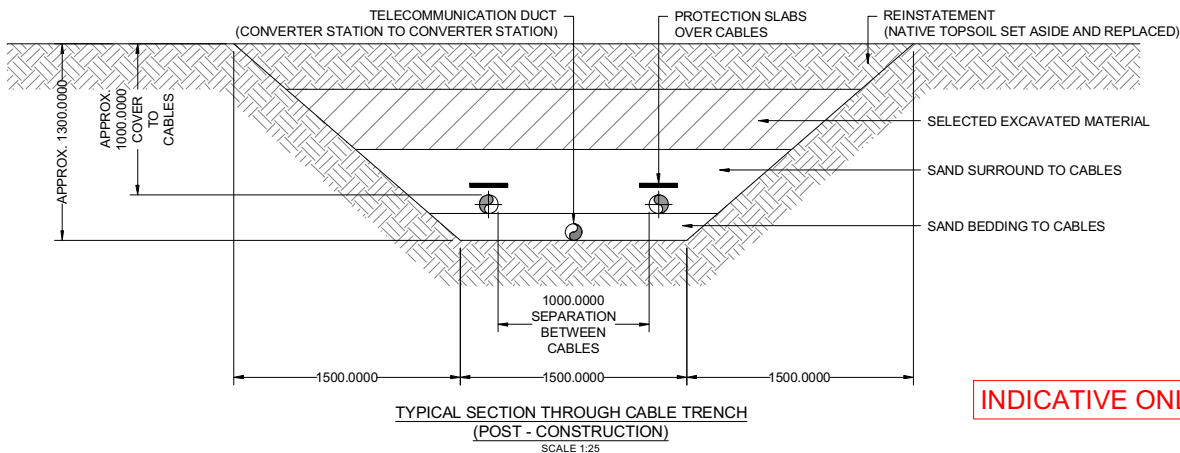
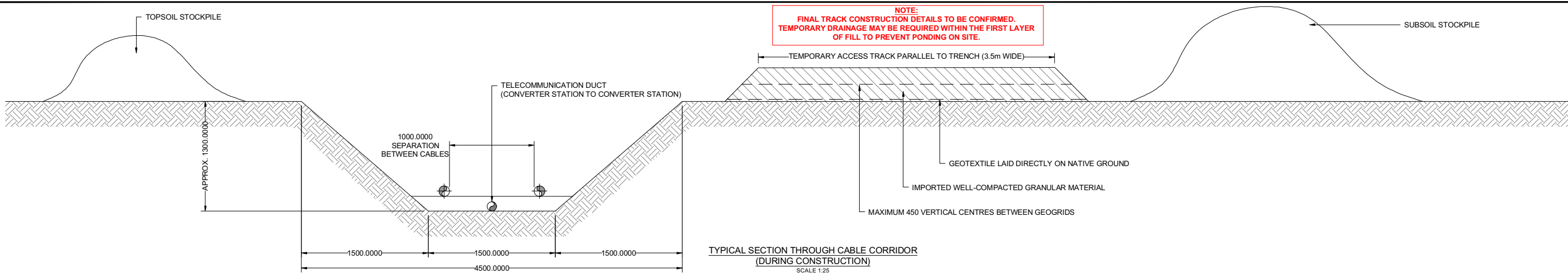
THE HVDC CABLE WILL BE ROUTED INTO AN APPROPRIATE LOCATION IN THE CONVERTER STATION, LINES SHOWN HERE ARE INDICATIVE ONLY.
2.

SEE DRG NO. *NCGEN-NCT-Z-XE-0004-01* FOR DETAILS OF CABLE DUCTS UNDER LANDSCAPING BUNDS.
3.

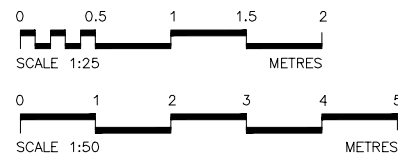
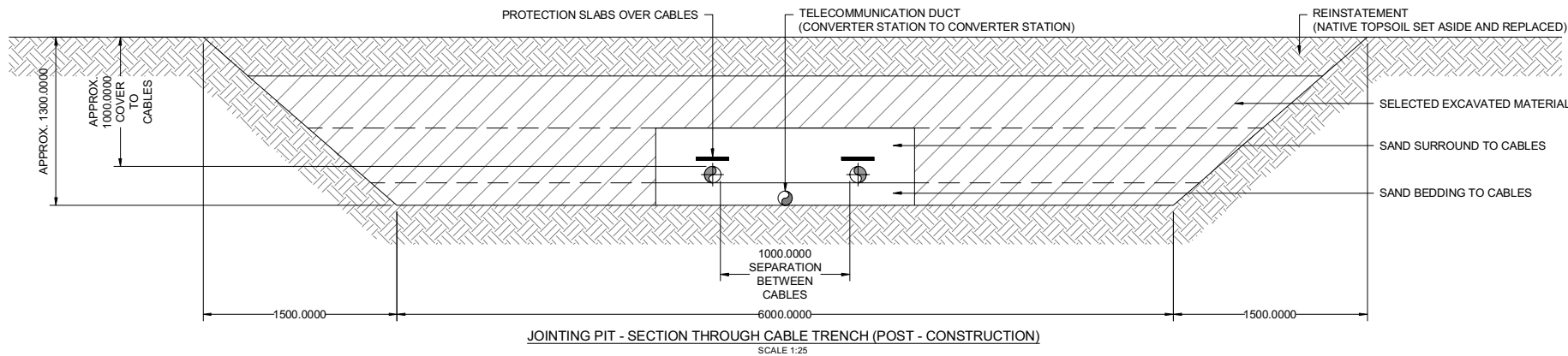
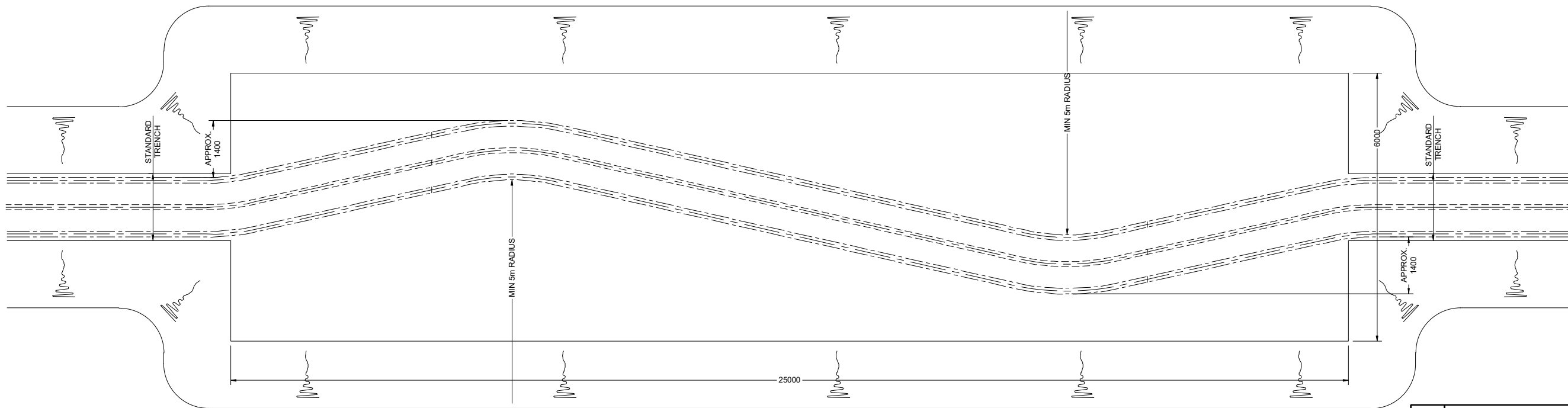
EARTHING REQUIREMENTS ALONG CABLE ROUTE TO BE CONFIRMED.

TO BE READ IN CONJUNCTION WITH DRAWING Nos. 0002-01, 0001-01, 0001-02 & 0001-03

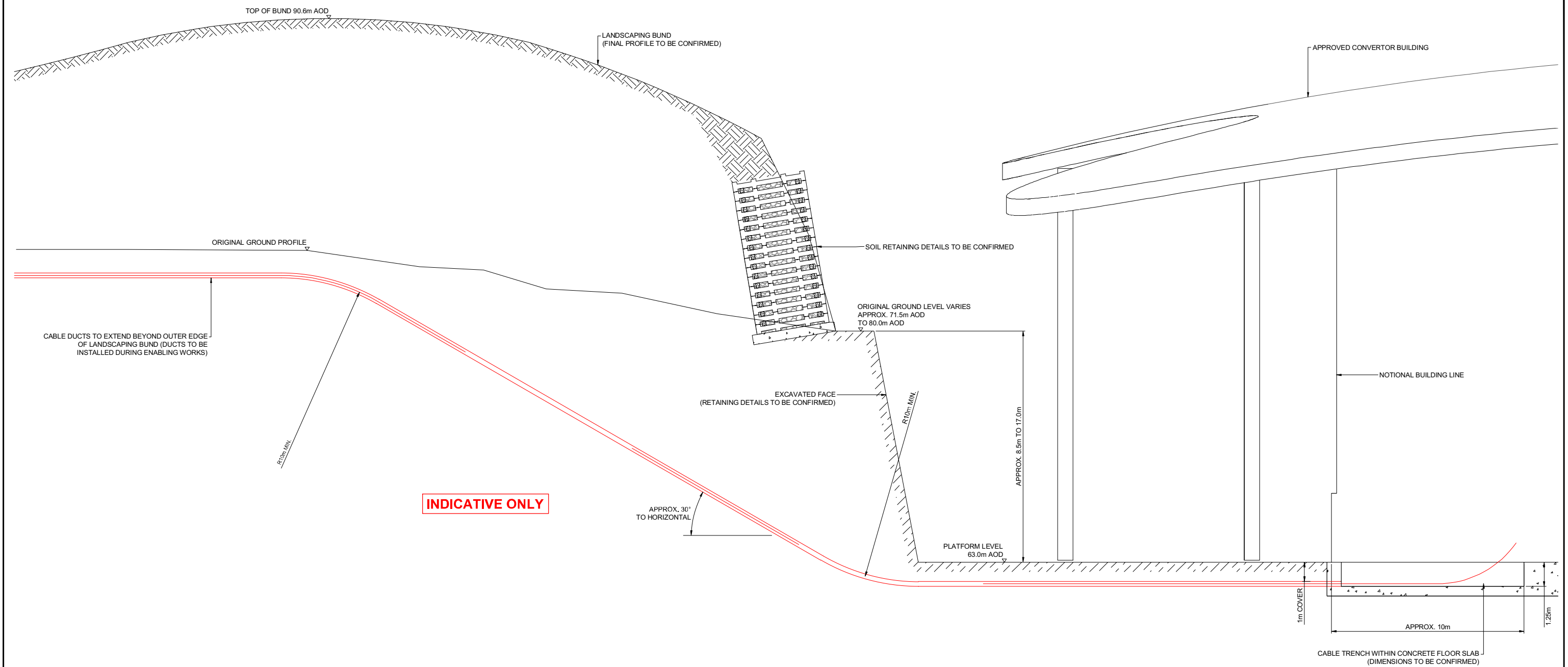
2	RFU - UPDATED OS LICENSE NUMBER	24/07/2018	JAM	STM	GMC
1	RFU - UPDATED DRAWING AND LEGEND	23/07/2018	JAM	STM	GMC
0	IFU - FIRST ISSUED	10/07/2018	EH	GJD	GJD
REV NO	ISSUE REASON	DATE	PREPARED	CHECKED	APPROVED
PROJECT			NORTH CONNECT		
DRAWING TITLE			HVDC ONSHORE CABLE ROUTE GENERAL ARRANGEMENT SHEET 4		
DRAWING NO			NCGEN-NCT-Z-XD-0001-04		
SHEET	REVISION	FORMAT	SCALE	GEODETTIC REFERENCE SYSTEM	DRAWING PRODUCER DOC. NO./REV
04	2	A3	1:2000		DRAWING PRODUCER DOC. TAG NO.



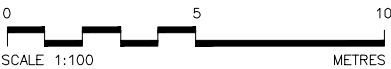
INDICATIVE ONLY






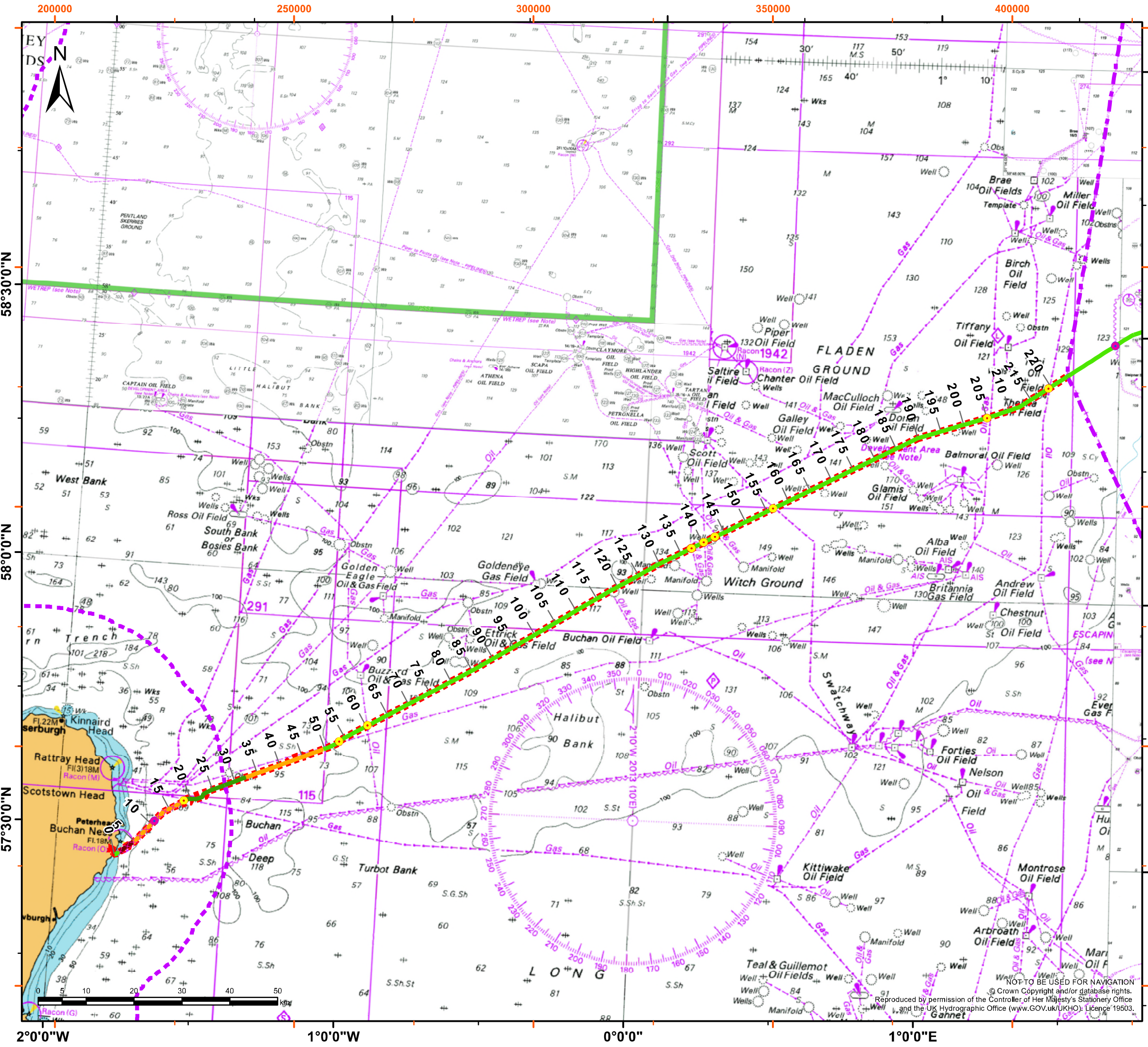
1	IFU - TELECOMMUNICATIONS DUCT ADDED TO CABLE TRENCH	25/07/2018	JM		
0	IFU - ISSUED FOR USE	10/07/2018	EH	GJD	GJD
REV NO	ISSUE REASON	DATE	PREPARED	CHECKED	APPROVED
PROJECT			NORTH CONNECT		
DRAWING TITLE			HVDC ONSHORE CABLE ROUTE DETAILS		
DRAWING NO			NCGEN-NCT-Z-XE-0003-01		
SHEET	REVISION	FORMAT	SCALE	GEODETTIC REFERENCE SYSTEM	DRAWING PRODUCER DOC. NO./REV
01	1	A1	As shown		DRAWING PRODUCER DOC. TAG NO.
This document contains confidential information. Not to be copied to third parties without written authorization. © Copyright NorthConnect ES - All rights reserved. The sole responsibility of this publication lies with the author. The European Union is not responsible for any use that may be made of the information contained therein.					



HVDC CABLE ENTRY TO CONVERTOR BUILDING
SCALE 1:100



1	IFU - NOTE ADDED (INDICATIVE ONLY)	25/07/2018	JM		
0	IFU - ISSUED FOR USE	10/07/2018	EH	GJD	GJD
REV NO	ISSUE REASON	DATE	PREPARED	CHECKED	APPROVED
PROJECT			 Co-financed by the European Union Connecting Europe Facility		
NORTH CONNECT					
DRAWING TITLE			 Co-financed by the European Union Connecting Europe Facility		
HVDC CABLE ENTRY TO CONVERTOR BUILDING					
DRAWING NO					
NCGEN-NCT-Z-XE-0004-01					
SHEET	REVISION	FORMAT	SCALE	GEODETIC REFERENCE SYSTEM	
01	1	A1	1:100	DRAWING PRODUCER DOC. NO./REV	
				DRAWING PRODUCER DOC. TAG NO.	
This document contains confidential information. Not to be copied to third parties without written authorization. © Copyright NorthConnect K5 - All rights reserved. The sole responsibility of this publication lies with the author. The European Union is not responsible for any use that may be made of the information contained therein.					

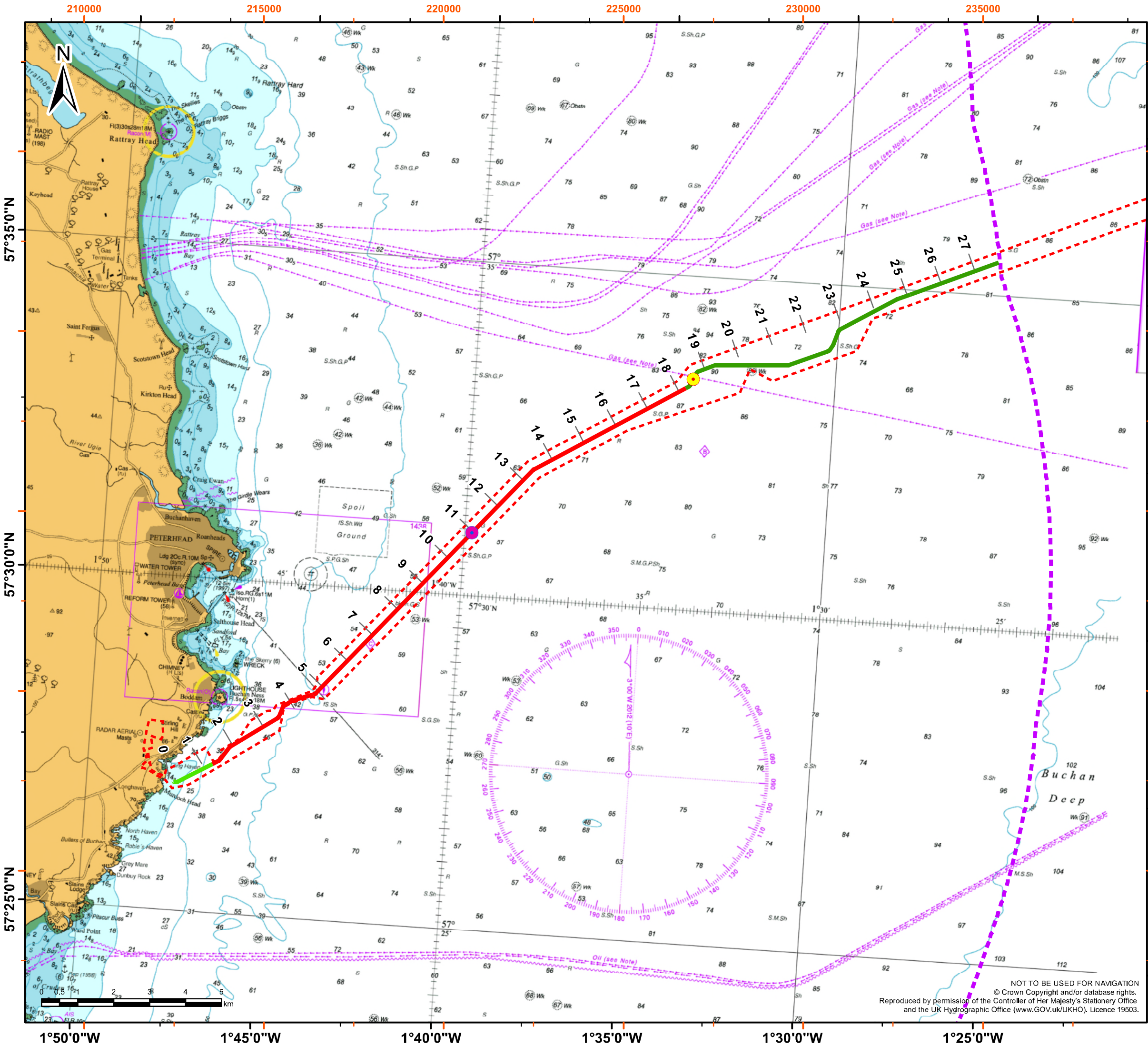


Legend

- Kilometer Post
- Exclusive Economic Zone
- Territorial Waters
- Redline Boundary
- Crossings Rock Placement
 - Cable
 - Pipeline
- Estimated Remedial Rock Placement Requirements
 - Percentage of Section Length
 - 0%
 - 0 - 2%
 - 2 - 8%
 - 8 - 12%
 - 100%
 - Prelay Plough Backfill Rock Placement

																																																																																																																																																																																																																																																																																																																																																																																																																																																																																																																																																																																																																																																																																																																																																																																																																																																																																																																																																																																																																																																																																																																																																																																																																																																																																																																																																																																																																																																																																						</
--	--	--	--	--	--	--	--	--	--	--	--	--	--	--	--	--	--	--	--	--	--	--	--	--	--	--	--	--	--	--	--	--	--	--	--	--	--	--	--	--	--	--	--	--	--	--	--	--	--	--	--	--	--	--	--	--	--	--	--	--	--	--	--	--	--	--	--	--	--	--	--	--	--	--	--	--	--	--	--	--	--	--	--	--	--	--	--	--	--	--	--	--	--	--	--	--	--	--	--	--	--	--	--	--	--	--	--	--	--	--	--	--	--	--	--	--	--	--	--	--	--	--	--	--	--	--	--	--	--	--	--	--	--	--	--	--	--	--	--	--	--	--	--	--	--	--	--	--	--	--	--	--	--	--	--	--	--	--	--	--	--	--	--	--	--	--	--	--	--	--	--	--	--	--	--	--	--	--	--	--	--	--	--	--	--	--	--	--	--	--	--	--	--	--	--	--	--	--	--	--	--	--	--	--	--	--	--	--	--	--	--	--	--	--	--	--	--	--	--	--	--	--	--	--	--	--	--	--	--	--	--	--	--	--	--	--	--	--	--	--	--	--	--	--	--	--	--	--	--	--	--	--	--	--	--	--	--	--	--	--	--	--	--	--	--	--	--	--	--	--	--	--	--	--	--	--	--	--	--	--	--	--	--	--	--	--	--	--	--	--	--	--	--	--	--	--	--	--	--	--	--	--	--	--	--	--	--	--	--	--	--	--	--	--	--	--	--	--	--	--	--	--	--	--	--	--	--	--	--	--	--	--	--	--	--	--	--	--	--	--	--	--	--	--	--	--	--	--	--	--	--	--	--	--	--	--	--	--	--	--	--	--	--	--	--	--	--	--	--	--	--	--	--	--	--	--	--	--	--	--	--	--	--	--	--	--	--	--	--	--	--	--	--	--	--	--	--	--	--	--	--	--	--	--	--	--	--	--	--	--	--	--	--	--	--	--	--	--	--	--	--	--	--	--	--	--	--	--	--	--	--	--	--	--	--	--	--	--	--	--	--	--	--	--	--	--	--	--	--	--	--	--	--	--	--	--	--	--	--	--	--	--	--	--	--	--	--	--	--	--	--	--	--	--	--	--	--	--	--	--	--	--	--	--	--	--	--	--	--	--	--	--	--	--	--	--	--	--	--	--	--	--	--	--	--	--	--	--	--	--	--	--	--	--	--	--	--	--	--	--	--	--	--	--	--	--	--	--	--	--	--	--	--	--	--	--	--	--	--	--	--	--	--	--	--	--	--	--	--	--	--	--	--	--	--	--	--	--	--	--	--	--	--	--	--	--	--	--	--	--	--	--	--	--	--	--	--	--	--	--	--	--	--	--	--	--	--	--	--	--	--	--	--	--	--	--	--	--	--	--	--	--	--	--	--	--	--	--	--	--	--	--	--	--	--	--	--	--	--	--	--	--	--	--	--	--	--	--	--	--	--	--	--	--	--	--	--	--	--	--	--	--	--	--	--	--	--	--	--	--	--	--	--	--	--	--	--	--	--	--	--	--	--	--	--	--	--	--	--	--	--	--	--	--	--	--	--	--	--	--	--	--	--	--	--	--	--	--	--	--	--	--	--	--	--	--	--	--	--	--	--	--	--	--	--	--	--	--	--	--	--	--	--	--	--	--	--	--	--	--	--	--	--	--	--	--	--	--	--	--	--	--	--	--	--	--	--	--	--	--	--	--	--	--	--	--	--	--	--	--	--	--	--	--	--	--	--	--	--	--	--	--	--	--	--	--	--	--	--	--	--	--	--	--	--	--	--	--	--	--	--	--	--	--	--	--	--	--	--	--	--	--	--	--	--	--	--	--	--	--	--	--	--	--	--	--	--	--	--	--	--	--	--	--	--	--	--	--	--	--	--	--	--	--	--	--	--	--	--	--	--	--	--	--	--	--	--	--	--	--	--	--	--	--	--	--	--	--	--	--	--	--	--	--	--	--	--	--	--	--	--	--	--	--	--	--	--	--	--	--	--	--	--	--	--	--	--	--	--	--	--	--	--	--	--	--	--	--	--	--	--	--	--	--	--	--	--	--	--	--	--	--	--	--	--	--	--	--	--	--	--	--	--	--	--	--	--	--	--	--	--	--	--	--	--	--	--	--	--	--	--	--	--	--	--	--	--	--	--	--	--	--	--	--	--	--	--	--	--	--	--	--	--	--	--	--	--	--	--	--	--	--	--	--	--	--	--	--	--	--	--	--	--	--	--	--	--	--	--	--	--	--	--	--	--	--	--	--	--	--	--	--	--	--	--	--	--	--	--	--	--	--	--	--	--	--	--	--	--	--	--	--	--	--	--	--	--	--	--	--	--	--	--	--	--	--	--	--	--	--	--	--	--	--	--	--	--	--	--	--	--	--	--	--	--	--	--	--	--	--	--	--	--	--	--	--	--	--	--	--	--	--	--	--	--	--	--	--	--	--	--	--	--	--	--	--	--	--	--	--	--	--	--	--	--	--	--	--	--	--	--	--	--	--	--	--	--	--	--	--	--	--	--	--	--	--	--	--	--	--	--	--	--	--	--	--	--	--	--	--	--	--	--	--	--	--	--	--	--	--	--	--	--	--	--	--	--	--	--	--	--	--	--	--	--	--	--	--	--	--	--	--	--	--	--	--	--	--	--	--	--	--	--	--	--	--	--	--	--	--	--	--	--	--	--	--	--	--	--	--	--	--	--	--	--	--	--	--	--	--	--	--	--	--	--	--	--	--	--	--	--	--	--	--	--	--	--	--	--	--	--	--	--	--	--	--	--	--	--	--	--	--	--	--	--	--	--	--	--	--	--	--	--	--	--	--	--	--	--	--	--	--	--	--	--	--	--	--	--	--	--	--	--	--	--	--	--	--	--	--	--	--	--	--	--	--	--	--	--	--	--	--	--	--	--	--	--	--	--	--	--	--	--	--	--	--	--	--	--	--	--	--	--	--	--	--	--	--	--	--	--	--	--	--	--	--	--	--	--	--	--	--	--	--	--	--	--	--	--	--	--	--	--	--	--	--	--	--	--	--	--	--	--	--	--	--	--	--	--	--	--	--	--	--	--	--	--	--	--	--	--	--	--	--	--	--	--	--	--	--	--	--	--	--	--	--	--	--	--	--	--	--	--	--	--	--	--	--	--	--	--	--	--	--	--	--	--	--	--	--	--	--	--	--	--	--	--	--	--	--	--	--	--	--	--	--	--	--	--	--	--	--	--	--	--	--	--	--	--	--	--	--	--	--	--	--	--	--	--	----

NOT TO BE USED FOR NAVIGATION
Reproduced by permission of the Controller of Her Majesty's Stationery Office
and the UK Hydrographic Office (www.GOV.UK/UKHO). Licence 19503.



Legend

- Kilometer Post
- Territorial Waters
- Redline Boundary

Crossings Rock Placement

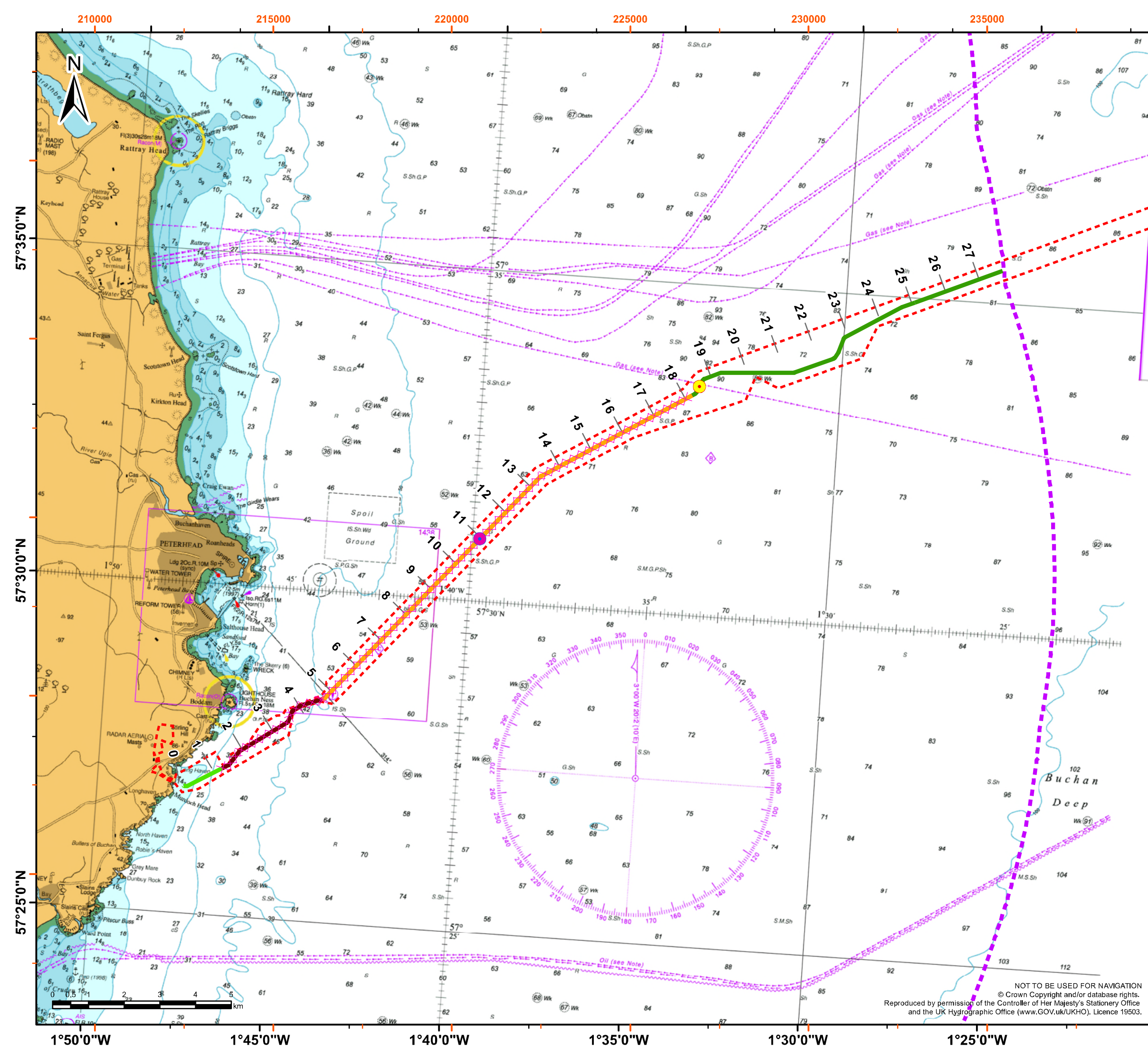
- Cable
- Pipeline

Estimated Remedial Rock Placement Requirements

Percentage of Section Length

- 0%
- 0 - 2%
- 2 - 8%
- 8 - 12%
- 100%

0	Issued for Use	09/07/2018	DAM	JOA	ECB	PEJ
A	Issued for Review	05/07/2018	DAM	JOA	ECB	PEJ
REV NO	ISSUE REASON	DATE	PREPARED	CHECKED	APPROVED	
PROJECT			NORTHCONNECT			
DRAWING TITLE			Predicted Remedial Rock Placement: Jetting Only – UKTW			
DRAWING NO.			NCOFF-NCT-X-XG-0006-01			
SHEET	REVISION	FORMAT	SCALE	GEODETIC REF. SYSTEM	DRAWING PRODUCER DOC. NO.	
000	0	A3	100,000	ETRS 1989 UTM Zone 31N	TK1323-01	
This document contains confidential information. Not to be copied to third parties without written authorization. © Copyright NorthConnect PS - All rights reserved. The sole responsibility of this publication lies with the author. The European Union is not responsible for any use that may be made of the information contained therein.					DRAWING PRODUCER DOC. REV.	
					0	



Legend

- Kilometer Post
- Territorial Waters
- Redline Boundary
- Crossings Rock Placement**
 - Cable
 - Pipeline
- Estimated Remedial Rock Placement Requirements**
Percentage of Section Length
 - 0%
 - 0 - 2%
 - 2 - 8%
 - 8 - 12%
 - 100%
- Preplay Plough Backfill Rock Placement

0	Issued for Use				09/07/2018	DAM	JOA	ECB	PEJ
A	Issued for Review				05/07/2018	DAM	JOA	ECB	PEJ
REV NO	ISSUE REASON				DATE	PREPARED	CHECKED	APPROVED	
PROJECT									
NORTHCONNECT									
DRAWING TITLE									
Predicted Remedial and Backfill Rock Placement – UKT Jetting + Prelay Polution – UKTW									
DRAWING NO.									
NCOFF-NCT-X-XG-0007-01									
SHEET		REVISION		FORMAT		SCALE		GEOIDETIC REF. SYSTEM	
000		0		A3		100,000		ETRS 1989 UTM Zone 31N	
DRAWING PRODUCER DOC. NO. TK1323-01									
DRAWING PRODUCER DOC. REV. 0									
<small>This document contains confidential information. Not to be copied to third parties without authorisation. © Copyright NorthConnect AS. All rights reserved. The sole responsibility of this publication lies with the author. The European Union is not responsible for any use of the information contained therein.</small>									

NOT TO BE USED FOR NAVIGATION
© Crown Copyright and/or database rights.
Reproduced by permission of the Controller of Her Majesty's Stationery Office
and the UK Hydrographic Office (www.GOV.UK/UKHO). Licence 19503.