

DEVELOPMENT LOCATION

APPLICATION FOR CONSENTS UNDER SECTION 36 OF THE ELECTRICITY ACT 1989 FOR THE CONSTRUCTION AND OPERATION OF THE INCH CAPE OFFSHORE WIND FARM ELECTRICITY GENERATING STATION, 15-22 KILOMETRES EAST OF THE ANGUS COASTLINE.

APPLICATIONS FOR TWO DECLARATIONS UNDER SECTION 36A OF THE ELECTRICITY ACT 1989 TO EXTINGUISH PUBLIC RIGHTS OF NAVIGATION SO FAR AS THEY PASS THROUGH THOSE PLACES WITHIN THE TERRITORIAL SEA WHERE STRUCTURES FORMING PART OF THE OFFSHORE WIND FARM ARE TO BE LOCATED.

See figure overleaf:

Figure 1. Inch Cape Offshore Wind Farm and Export Cable Location: and

Figure 2. Forth and Tay Offshore Wind farms.

SeaZone Solutions Limited, 2005 [04/2012, 008]. © British Crown Copyright, 2005. All rights Reserved.
Each Case Offshore Wind Farm © 2012. This document is the property of contractors and sub-contractors and shall not be reproduced nor transmitted without prior written approval.

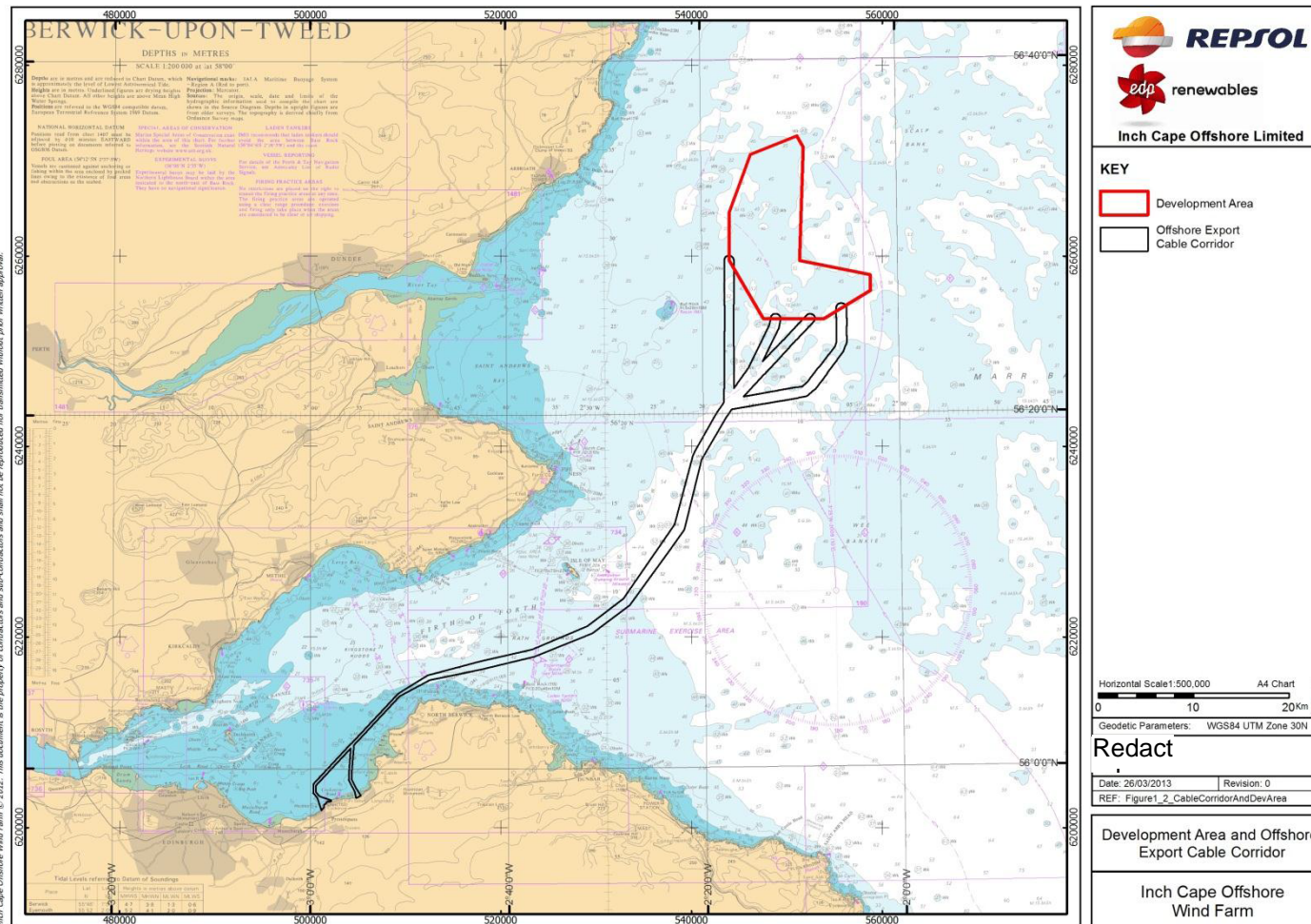


Figure 2. Forth and Tay Offshore Wind Farms.

