



# Kames

## Site Specific Modelling

28/07/21

Dr Jeffrey Lines & Tom Cryans

# Summary

farm	location	Zone and permitted area	Below threshold (permitted)		Above threshold (not permitted)	
			SPL and radius	Sea area	SPL and radius	Sea area
<b><u>North Moine (FS/0356)</u></b>	56° 9.338N 5° 32.113W	Zone G 2.98 km <sup>2</sup>	<b>181 dB</b> 2154 m	1.63 km <sup>2</sup>	n/a*	n/a
<b><u>Shuna Castle (FS/0465)</u></b>	56° 13.603N 5° 35.538W	Zone G 2.98 km <sup>2</sup>	<b>176 dB</b> 1148 m	2.78 km <sup>2</sup>	177 dB 1302 m	3.48 km <sup>2</sup>
<b><u>Kames Bay East (FS/0462)</u></b>	56° 14.861N 5° 30.833W	Zone G 2.98 km <sup>2</sup>	<b>181 dB</b> 2154 m	2.83 km <sup>2</sup>	n/a *	n/a
<b><u>Kames Bay West (FS/0271)</u></b>	56° 14.979N 5° 31.283W	Zone G 2.98 km <sup>2</sup>	<b>178 dB</b> 1477 m	2.97 km <sup>2</sup>	n/a**	n/a**
<b><u>Ardifuir (FS/1062)</u></b>	56° 7.062N 5° 34.031W	Zone G 2.98 km <sup>2</sup>	<b>177 dB</b> 1302 m	2.40 km <sup>2</sup>	178 dB 1477 m	3.07 km <sup>2</sup>
<b><u>Pooltiel West (FS/1310)</u></b>	57° 27.647N 6° 45.864W	Zone I 2.52 km <sup>2</sup>	<b>175 dB</b> 1013 m	2.18 km <sup>2</sup>	176 dB 1148 m	2.75 km <sup>2</sup>

# Site Locations

The site co-ordinates have been provided by Jamie McAndrew of Kames. Systems are deployed on sites as required whenever a seal problem is present. Systems can be deployed at any of the following sites.

## **Ace Aquatec Equipment rented:**

**US3s – 1**

**RT1s – 3**

**Systems are rotated according to requirements**

# Kames Aquaculture sites:

## Zone G

Zone G has a permitted disturbance area of 2.98 sq km

### North Moine (FS/0356)

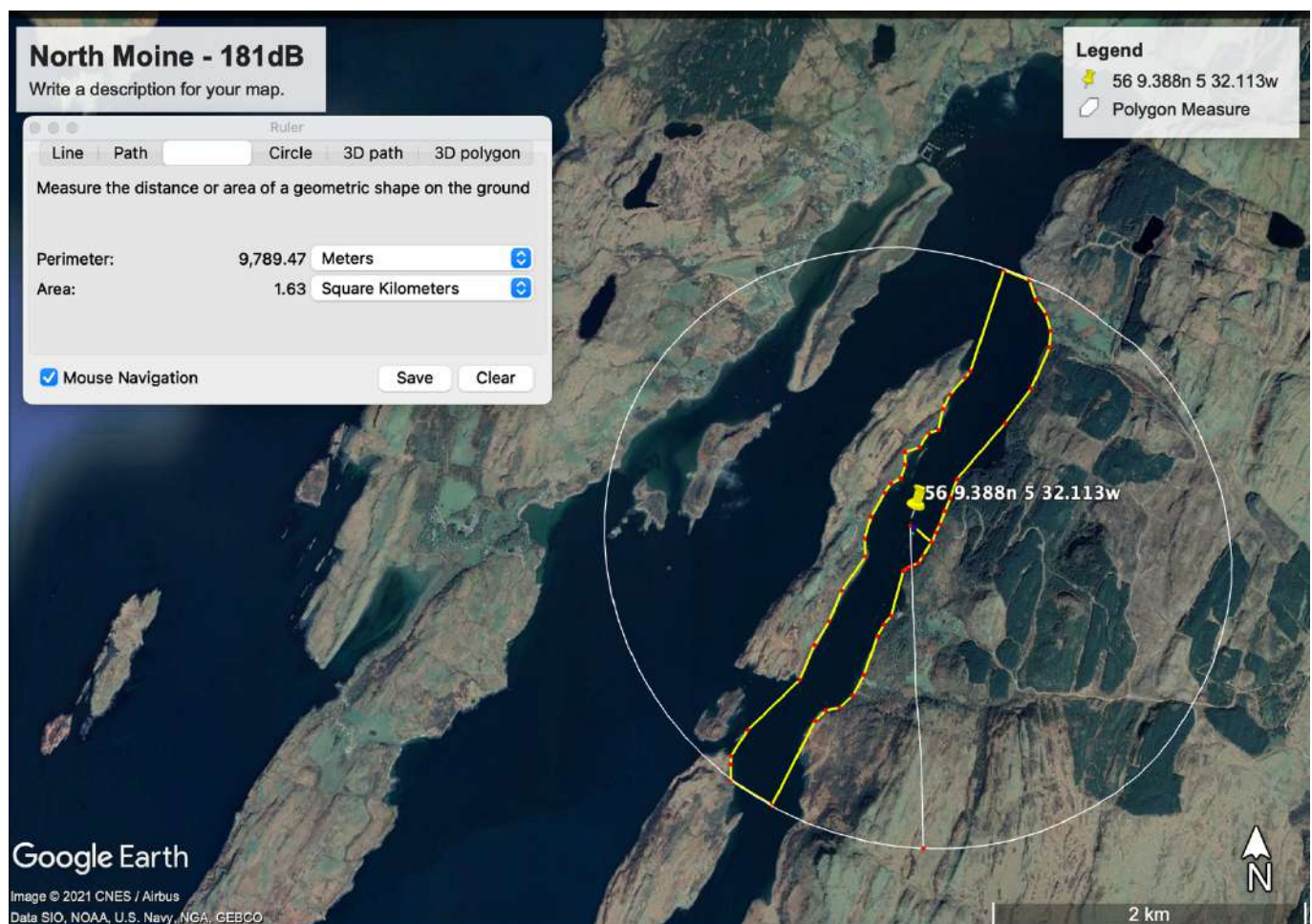
Latitude: 56 9.338N

Longitude: 5 32.113W

Maximum permitted SPL: 181dB (max output of devices)

Radius: 2154m

Disturbed Area: 1.63km<sup>2</sup>



**Shuna Castle (FS/0465)**

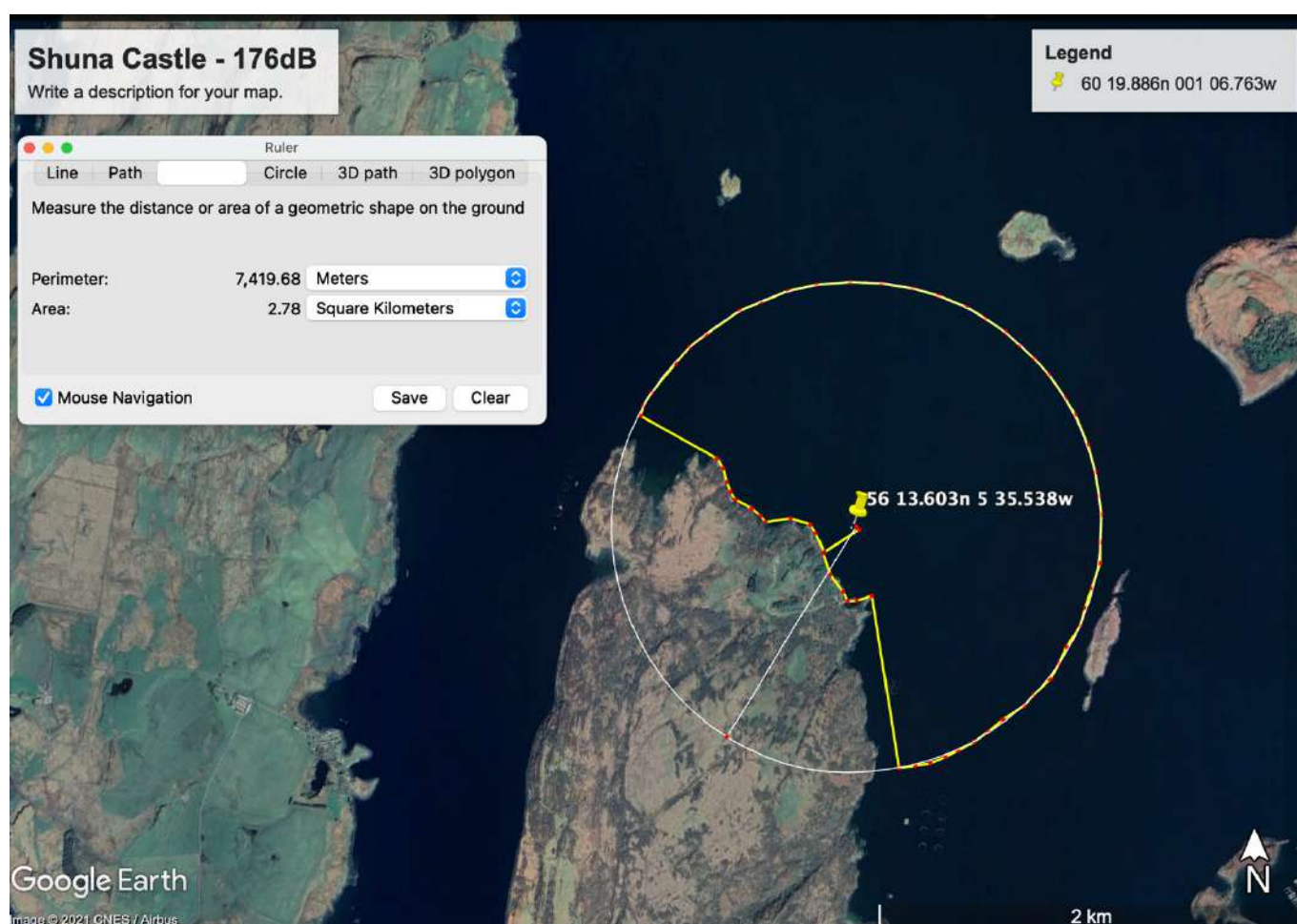
Latitude: 56 13.603N

Longitude: 5 35.538W

Maximum permitted SPL: 176dB

Radius: 1148m

Disturbed Area: 2.78km<sup>2</sup>





**Kames Bay East (FS/0462)**

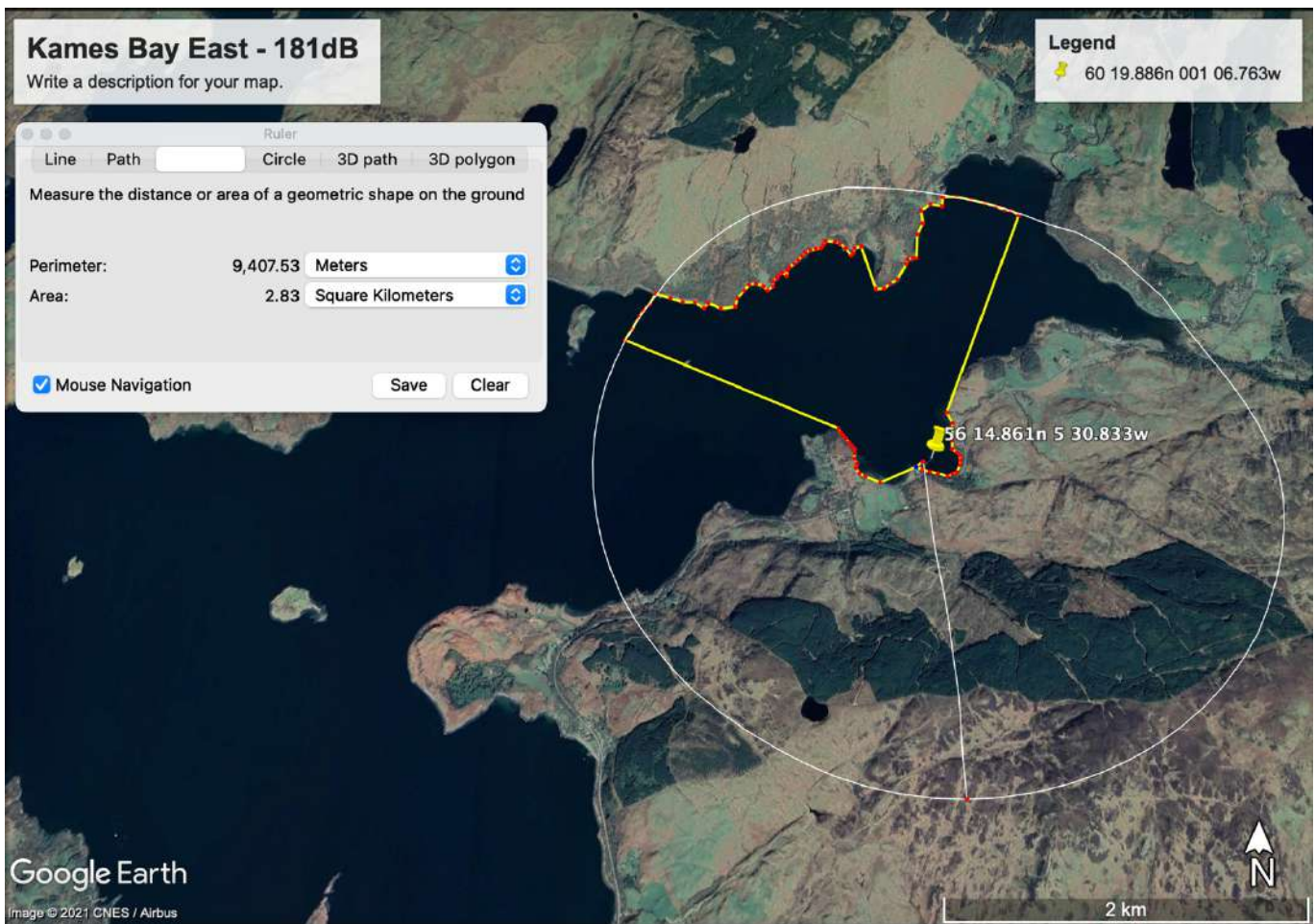
Latitude: 56 14.861N

Longitude: 5 30.833W

Maximum permitted SPL: 181dB

Radius: 2154m

Disturbed Area: 2.83km<sup>2</sup>



**Kames Bay West (FS/0271)**

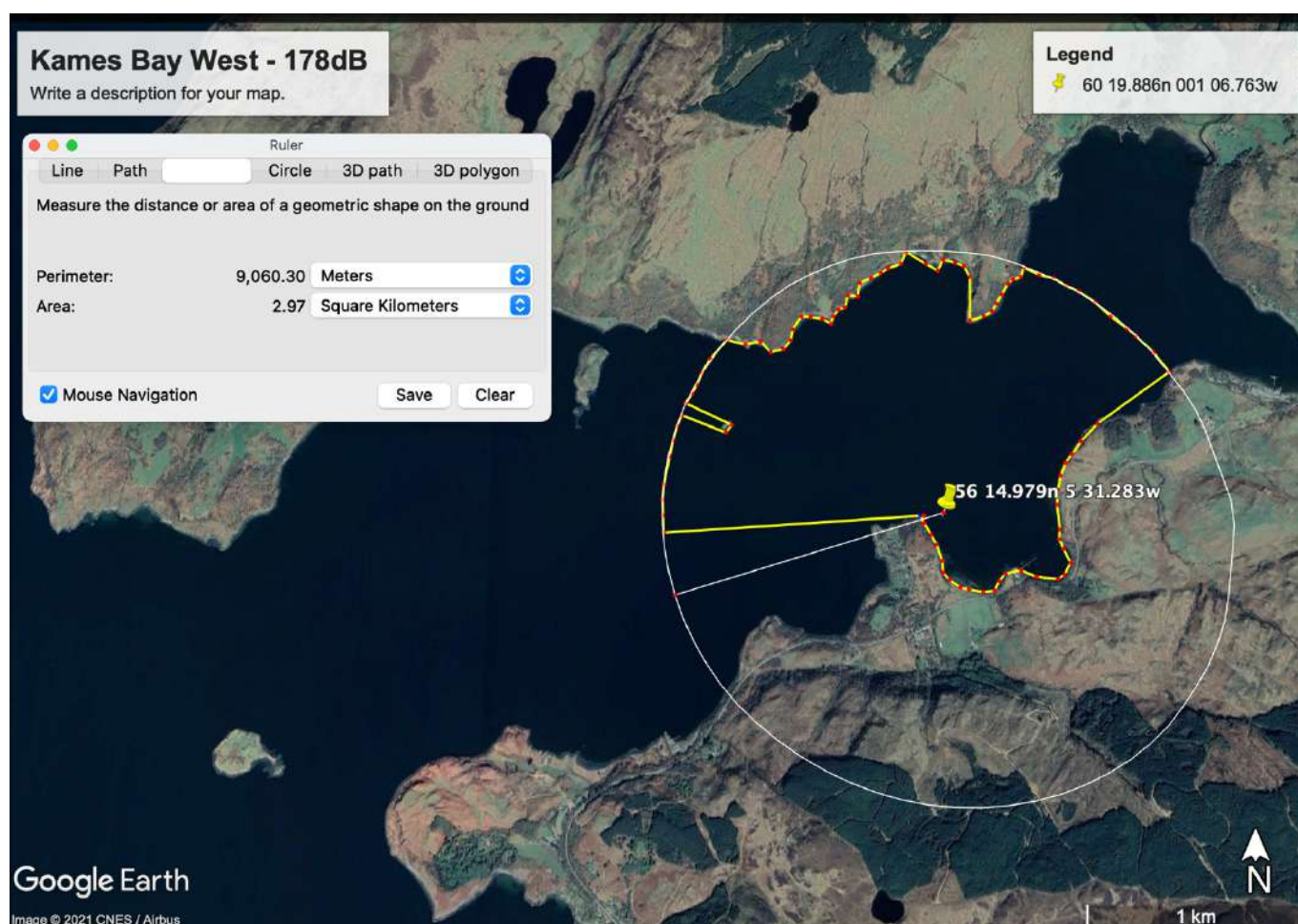
Latitude: 56 14.979N

Longitude: 5 31.283W

Maximum permitted SPL: 178dB

Radius: 1477m

Disturbed Area: 2.97km<sup>2</sup>



**Ardifuir (FS/1062)**

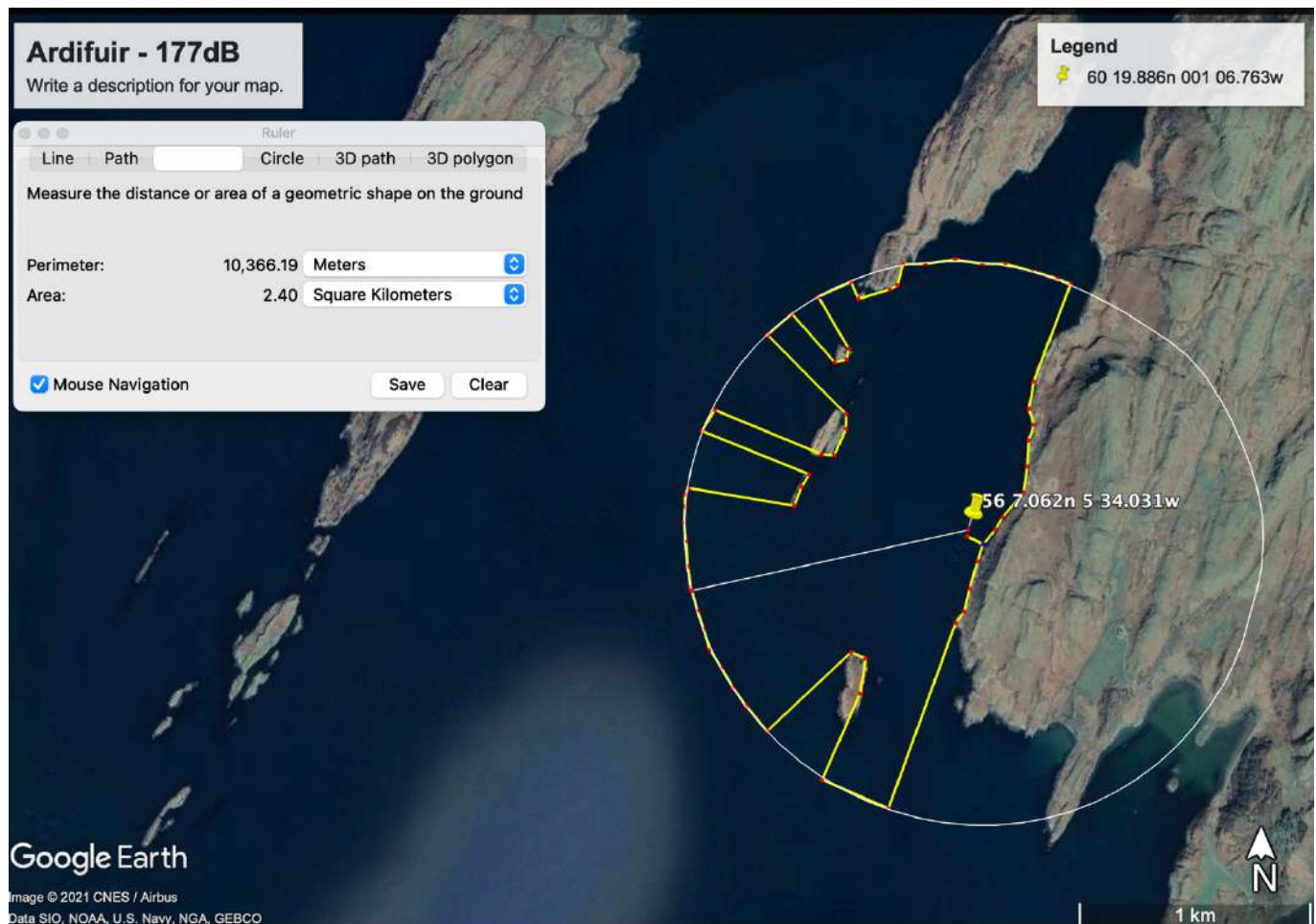
Latitude: 56 7.062N

Longitude: 5 34.031W

Maximum permitted SPL: 177dB

Radius: 1302m

Disturbed Area: 2.40 km<sup>2</sup>





## Zone I

Zone I has a permitted disturbance area of 2.52 sq km

### Pooltiel West (FS/1310)

Latitude: 57 27.647N

Longitude: 6 45.864W

Maximum permitted SPL: 175dB

Radius: 1013m

Disturbed Area: 2.18km<sup>2</sup>

