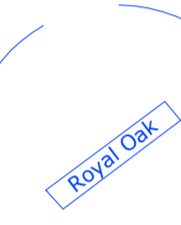


Scapa Bay

HMS Royal Oak
(200m Exclusion Zone)



Wide Approach to
Deep Water Quay

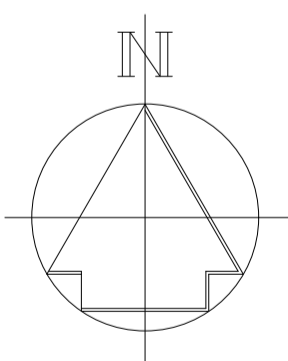
~200m

~575m

~835m

Works - Phase 1
Works - Phase 2

Ex. Fish Farm
(Location from Marine Chart)

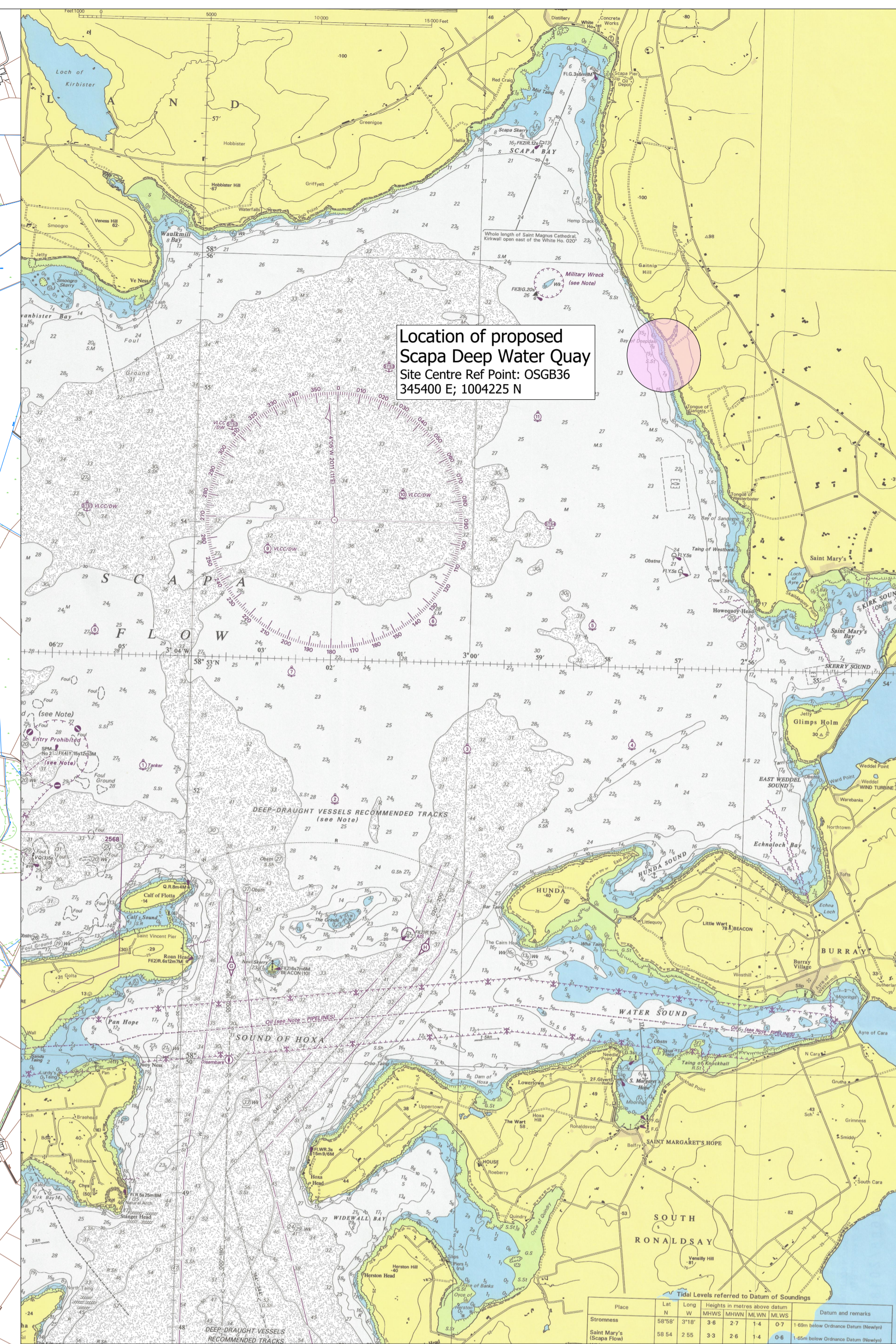


ORKNEY ISLANDS COUNCIL
SCAPA DEEP WATER QUAY
LOCATION PLAN
Scale 1: 10,000

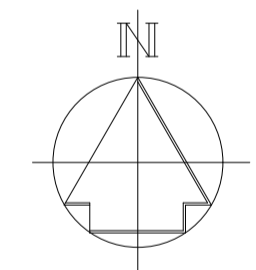


SCALE 1:10,000 at A1

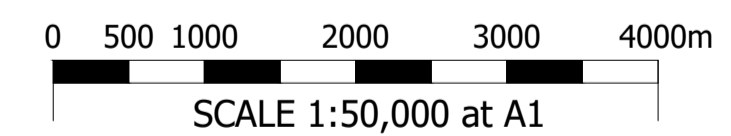
Reproduced by permission of Ordnance Survey®
on behalf of The Controller of Her Majesty's
Stationery Office.
© Crown copyright 2018. All rights reserved.
Licence number : 100021621



Location of proposed
Scapa Deep Water Quay
Site Centre Ref Point: OSGB36
345400 E; 1004225 N



SCAPA FLOW
LOCATION PLAN
Scale 1: 50,000
(Note: Chart aligned to OS Grid North)

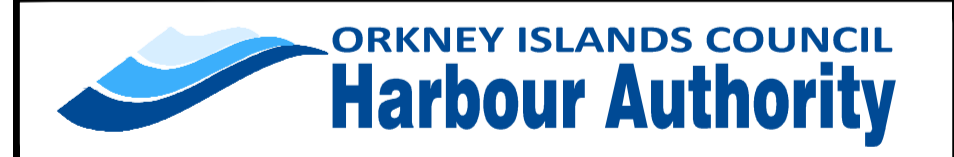


SCALE 1:50,000 at A1

Chart Datum (Scapa Flow)	Ordnance Datum (Newlyn)	Quay Heights and Tide Data Scapa Deep Water Quay
+7.00m	+5.31m	Quay Edge Level
+3.60m	+1.91m	Mean High Water Spring Tides
+1.69m	0.00m	Ordnance Datum (Newlyn)
+0.70m	-0.99m	Mean Low Water Spring Tides
0.00m	-1.69m	Chart Datum (Scapa Flow)
-5.00m	-6.69m	
-10.00m	-11.69m	
-15.00m	-16.69m	
-20.00m	-21.69m	

REV	DATE	REVISION	DRN	CHK
-	16.05.2023	E.I.A. Application Issue	JJM	SSJ

THIS DRAWING IS COPYRIGHT . DO NOT SCALE FROM THIS DRAWING.



Scapa Deep Water Quay
Site Location Plans

Arch Henderson 1919
Civil Engineers
Structural Engineers
Architects
CDM Co-ordinators
Geotechnical services
Environmental services

Stewart Building, Lerwick, Shetland, ZE1 0LL.
Tel : 01595 695512
www.arch-henderson.co.uk - email : lerwick@arch-henderson.co.uk

DRAWN :	DATE :	CHECKED :	APPROVED :
JJM	May 2023	SSJ	APS

SCALE: (A1) As Shown DRAWING STATUS: EIA Application

DRAWING No : 202042/EIA- 101 REV: -