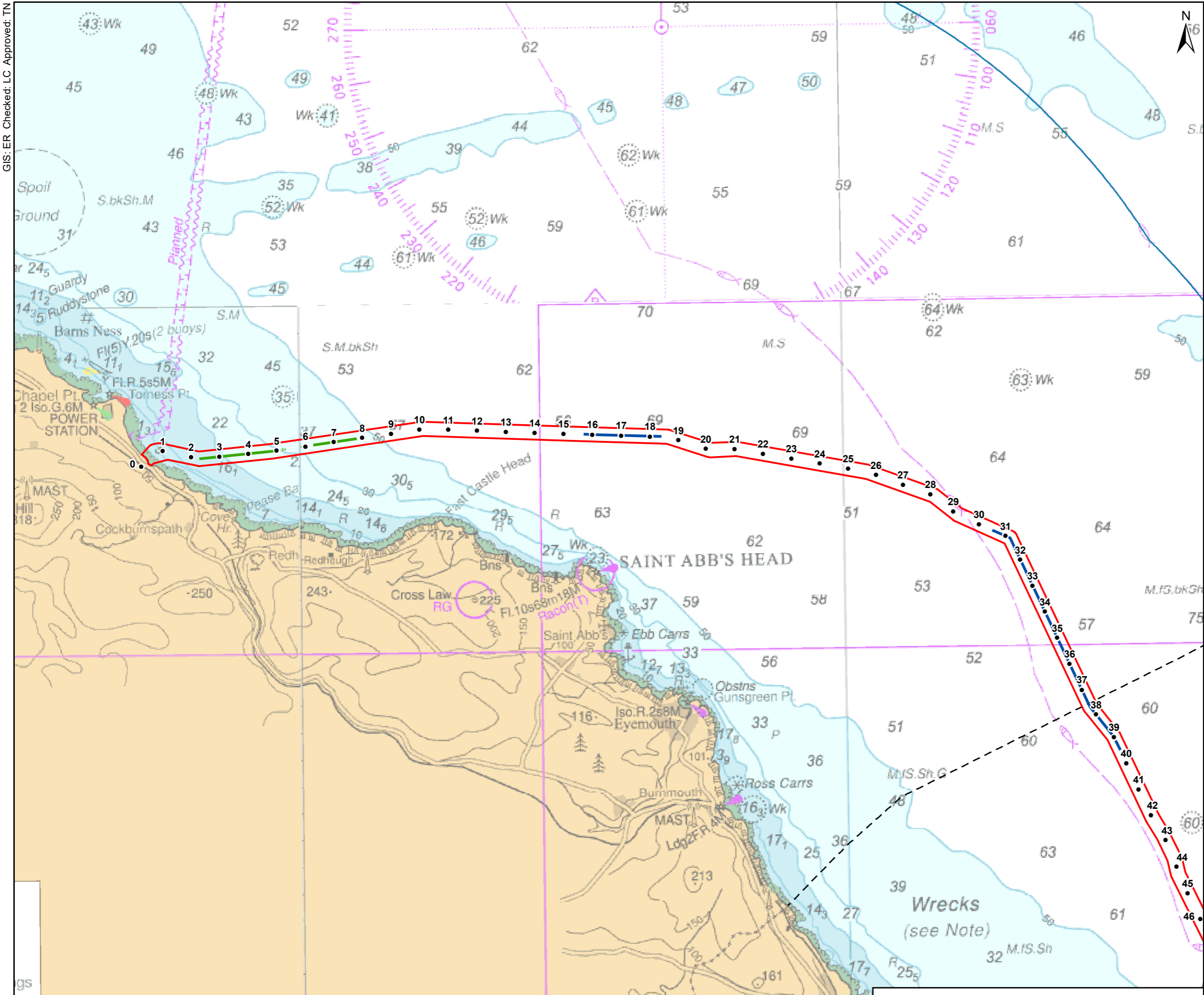


**PROJECT**  
**Scotland England Green Link 1 / Eastern Link 1**

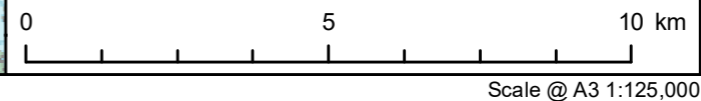
- KEY**
- Marine Installation Corridor
  - Kilometre Point (KP)
  - - - Scottish/English Water Border
  - UK Territorial Sea Limit
  - Indicative Rock Placement Location \*
  - Category 1 - 3%
  - Category 2 - 25%
  - Category 3 - 50%
  - Category 4 - 75%
  - Category 5 - 100%
- \* Categories are the percentage length of each zone where rock placement may be anticipated



**TITLE**  
**Figure 1**  
**Indicative Rock Placement Locations**

**REFERENCE**  
 SEGL1\_M\_MSLOT\_1\_v1\_20220623

GIS: ER Checked: LC Approved: TN



This drawing has been prepared for the use of AECOM's client. It may not be used, modified, reproduced or relied upon by third parties, except as agreed by AECOM or as required by law. AECOM accepts no responsibility, and denies any liability whatsoever, to any party that uses or relies on this drawing without AECOM's express written consent. Do not scale this document. All measurements must be obtained from the stated dimensions.