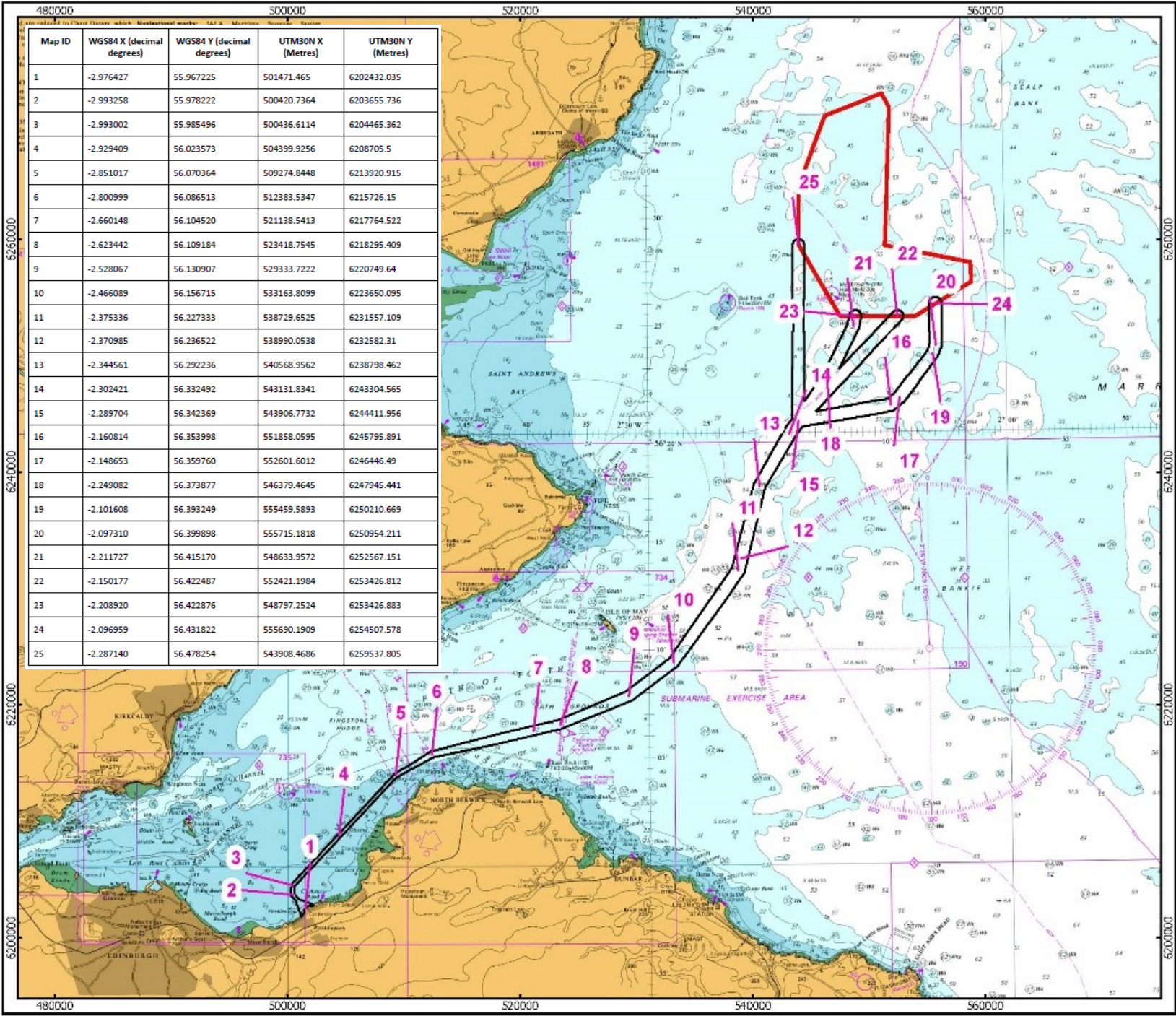


SeaZone Solutions Limited, 2017 (LR02017/0007). © British Crown Copyright, 2013. All rights reserved. Inch Cape Offshore Limited © 2018. This document is the property of contractors and sub-contractors and shall not be reproduced nor transmitted without prior written approval.



Map ID	WGS84 X (decimal degrees)	WGS84 Y (decimal degrees)	UTM30N X (Metres)	UTM30N Y (Metres)
1	-2.976427	55.967225	501471.465	6202432.035
2	-2.993258	55.978222	500420.7364	6203655.736
3	-2.993002	55.985496	500436.6114	6204465.362
4	-2.929409	56.023573	504399.9256	6208705.5
5	-2.851017	56.070364	509274.8448	6213920.915
6	-2.800999	56.086513	512383.5347	6215726.15
7	-2.660148	56.104520	521138.5413	6217764.522
8	-2.623442	56.109184	523418.7545	6218295.409
9	-2.528067	56.130907	529333.7222	6220749.64
10	-2.466089	56.156715	533163.8099	6223650.095
11	-2.375336	56.227333	538729.6525	6231557.109
12	-2.370985	56.236522	538990.0538	6232582.31
13	-2.344561	56.292236	540568.9562	6238798.462
14	-2.302421	56.332492	543131.8341	6243304.565
15	-2.289704	56.342369	543906.7732	6244411.956
16	-2.160814	56.353998	551858.0595	6245795.891
17	-2.148653	56.359760	552601.6012	6246446.49
18	-2.249082	56.373877	546379.4645	6247945.441
19	-2.101608	56.393249	555459.5893	6250210.669
20	-2.097310	56.399898	555715.1818	6250954.211
21	-2.211727	56.415170	548633.9572	6252567.151
22	-2.150177	56.422487	552421.1984	6253426.812
23	-2.208920	56.422876	548797.2524	6253426.883
24	-2.096959	56.431822	555690.1909	6254507.578
25	-2.287140	56.478254	543908.4686	6259537.805

Inch Cape Offshore Limited

---

**KEY**

- Offshore Export Cable Corridor
- Development Area

---

Horizontal Scale 1:450,000    A4 Chart

Geodetic Parameters: WGS84-UTM Zone 30N

Produced: DB  
 Reviewed: AB  
 Approved: TY

Date: 12/02/2018    Revision: 1  
 REF: int0275, figure 7.4, CableRouteCorridor

---

**Offshore Export Cable Corridor Coordinates**

---

Inch Cape Wind Farm