

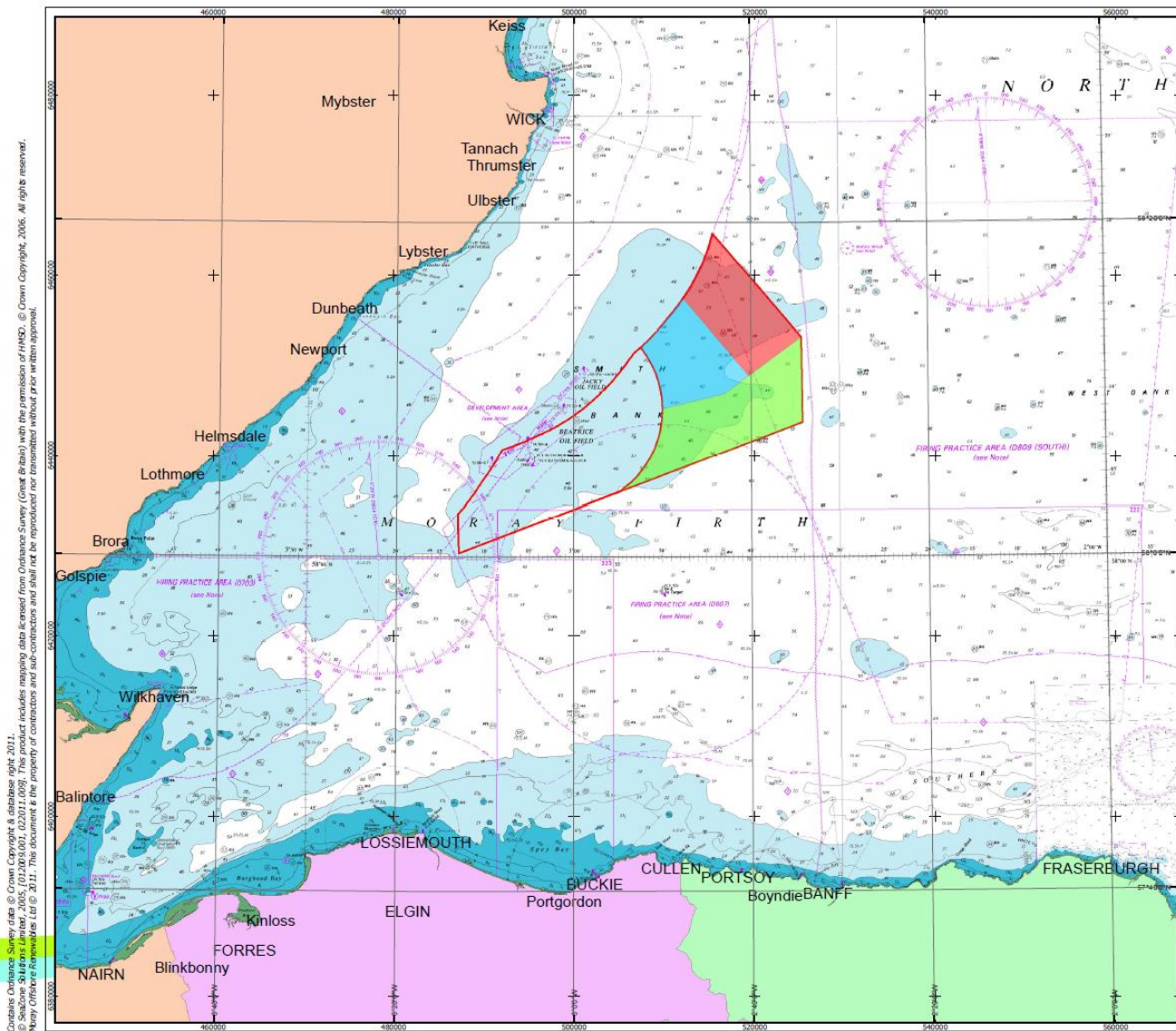
## **DEVELOPMENT LOCATION**

**APPLICATION FOR CONSENT UNDER SECTION 36 OF THE ELECTRICITY ACT 1989 FOR THE CONSTRUCTION AND OPERATION OF AN OFFSHORE GENERATING STATION, THE MACCOLL OFFSHORE WIND FARM, IN THE OUTER MORAY FIRTH.**



See figures overleaf:

Figure 1.1-2          MacColl Offshore Wind Farm Location

Figure 1.1-4          MacColl Offshore Wind Farm Location, showing the proposed export cable route to shore at Fraserburgh Beach and the proposed onshore cable route to the National Grid connection at Peterhead Power Station

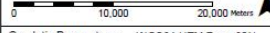


Creates: Ordnance Survey data © Crown Copyright & database right, 2011.  
 © Seabone Solutions Limited, 2005, (01208) 002, (0201) 009. This product includes mapping data licensed from Ordnance Survey (Great Britain) with the permission of HMSO. © Crown Copyright, 2006. All rights reserved.  
 All rights reserved. This document is the property of contractors and sub-contractors and shall not be reproduced or transmitted without prior written approval.


  

  
**Moray Offshore Renewables Ltd**

KEY	
	Telford Windfarm
	Stevenson Windfarm
	MacColl Windfarm
	MORL Zone Boundary

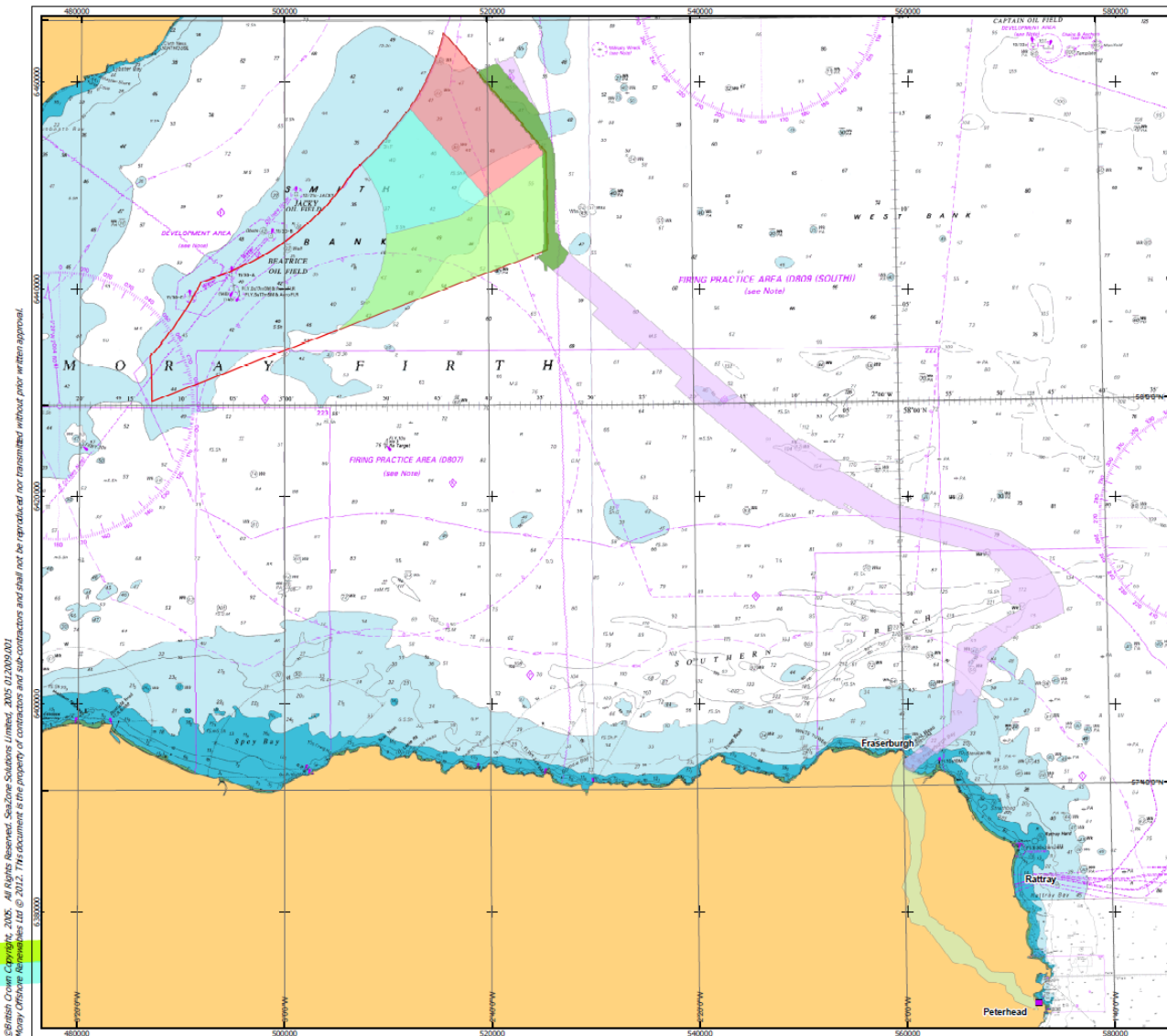
  

Horizontal Scale: 1:400,000	A3 Chart
	
Geodetic Parameters: WGS84 UTM Zone 30N	
Produced: RH	
Reviewed: AH	
Approved: CR	
Date: 20/12/2011	Revision: A
REF: 8460001-PPW0201-MOR-MAP-002	

**Fig 1.1-2 MORL Zone Boundaries**

Moray Offshore Renewables Ltd



©British Crown Copyright, 2005. All Rights Reserved. SeaZone Solutions Limited, 2005 01/20/09/001  
 Moray Offshore Renewables Ltd © 2012. This document is the property of contractors and sub-contractors and shall not be reproduced nor transmitted without prior written approval.



Moray Offshore Renewables Ltd

- KEY**
- Peterhead Grid Connection
  - Potential AC/DC Converter Station Location - 2km buffer to zone
  - MacColl Windfarm
  - Stevenson Windfarm
  - Telford Windfarm
  - MORL Zone Boundary
  - Onshore Export Cable Route
  - Offshore Export Cable Route

Horizontal Scale: 1:350,000 A3 Chart  
 0 7,500 15,000 Meters

Geodetic Parameters: WGS84 UTM Zone 30N

Produced: PH  
 Reviewed: CR  
 Approved: TL

Date: 02/03/2012 Revision: B

REF: 8480001-PPW0201-MOR-MAP-004

**Fig 1:1-4 Export Cable Route to Peterhead via Fraserburgh**

Moray Offshore Renewables Ltd