

# Magallanes ATIR 2.0

## EMEC Fall of Warness Test Site Navigational Risk Assessment Addendum

September 2025



## Document History

Revision	Date	Description	Originated by	Reviewed by	Approved by
1.0	02/08/2024	First draft	AM (EMEC)	DL (EMEC)	
2.0	09/09/2024	Final draft	AM (EMEC)	DL (EMEC)	
3.0	30/06/2025	Draft for resubmission	AM (EMEC)	DL (EMEC)	
3.1	11/08/2025	Draft resubmission	AM (EMEC)	DL (EMEC)	
3.2	17/09/2025	Draft for resubmission	AM (EMEC)	DL (EMEC)	

## Disclaimer

In no event will Magallanes FOW1 Ltd, the European Marine Energy Centre Ltd or their employees or agents, be liable to you or anyone else for any decision made or action taken in reliance on the information in this report or for any consequential, special or similar damages, even if advised of the possibility of such damages. While we have made every attempt to ensure that the information contained in the report has been obtained from reliable sources, neither the authors nor Magallanes FOW1 Ltd or the European Marine Energy Centre Ltd accept any responsibility for and exclude all liability for damages and loss in connection with the use of the information or expressions of opinion that are contained in this report, including but not limited to any errors, inaccuracies, omissions and misleading or defamatory statements, whether direct or indirect or consequential. Whilst we believe the contents to be true and accurate as at the date of writing, we can give no assurances or warranty regarding the accuracy, currency or applicability of any of the content in relation to specific situations or particular circumstances.

## Contents

1	Introduction	1
1.1	1.1 Company background	1
1.2	1.2 Technology background	2
1.3	1.3 Project background	3
2	Project Background	5
2.1	Device description	5
2.2	Mooring system	8
3	Key navigational themes	8
3.1	Vessel routing	9
3.2	Contact / allision risk	9
3.3	Effects of tide / tidal streams and weather	9
3.4	Under keel clearance	10
3.5	Collision risk and visual navigation	10
3.6	Communication, radar and positioning system	11
3.7	Moorings	11
3.8	Station keeping	11
3.9	Fishing activity	11
3.10	Recreational activity	11
3.11	Subsea cables	11
3.12	Search and rescue	11
3.13	Cumulative and in-combination	11
4	Risk controls	12
4.1	Site-wide risk controls	12
4.2	Project-specific risk controls	14
5	Summary and conclusion	16

## List of Figures

Figure 1. Evolution of the Magallanes Technology .....	2
Figure 2. Launch of the Prototype ATIR platform .....	2
Figure 3. ATIR platform showing 'blocks' .....	5
Figure 4. ATIR from above .....	6
Figure 5. Main components of the ATIR platform .....	7
Figure 6. Diagram of electrical power generation from tidal currents .....	8
Figure 7. Scheme of mooring system with clump weights .....	9
Figure 8. Key Dimensions of the ATIR 2.0 .....	10

## List of Tables

Table 1. Test campaigns with the full-scale prototype .....	3
Table 2. EMEC embedded risk controls for Fall of Warness test site .....	14
Table 3. Project-specific risk controls .....	16

---

# 1 Introduction

## 1.1 1.1 Company background

Magallanes FOW1 Limited is a leading developer of tidal energy technology. We are the UK branch of Magallanes Renovables and have been set up specifically to commercialise the Magallanes technology, leveraging the unparalleled expertise of the UK supply chain to do so. Magallanes FOW1 Limited is registered in Scotland.

Founded in 2007 Magallanes Renovables was created with the sole purpose of developing and commercialising a cost-effective tidal technology, overcoming the hurdles that have historically held the sector back. Our philosophy is simplicity and cost-effectiveness, which has led us to develop breakthrough systems, solving the many challenges encountered with innovative and cost-effective solutions.

Our technology is centered around a simple and reliable surface floating platform that leverages existing technology from the mature wind and naval industries, minimising technology risk. Our platforms deliver high output with low installation and maintenance costs.

We are a highly experienced multidisciplinary team with innovation, sustainability and quality as our core values. We have deployed and tested a full-scale platform in the unforgiving environment of the Orkney Islands. Previously we developed and tested 2 scale models to inform the full-scale design.

### **Key team experience**

Our multidisciplinary and highly skilled team has been the main driver of our success, each individual is in charge of one of the working areas for technology development. Important decisions are taken in quorum and teamwork is part of our open working structure.

In addition, Magallanes Renovables has collaborated very closely with skilled partners in different business and technology areas needed to develop a ground-breaking system in tidal energy generation.

Since its inception, the company has been involved in multiple R&D projects focused on developing floating tidal turbines:

- 2007 to 2011 – concept development and evaluation including partial systems tests at small scale – e.g., 1:30 turbine and rotor
- 2011 to 2012 - 1:10 scale model constructed to evaluate and validate the concept. Prototype tested in Bay of Vigo and Scotland with positive results.
- 2013 to 2015 – Design of full-scale platform and systems.
- 2016 to 2017 – Construction of full scale, 1.5MW platform in Spain
- 2018 to 2018 - Sea-trials of full-scale platform around Vigo.
- 2019 - 2024 - Platform installed and grid-connected at EMEC, Scotland in early 2019.
- 2020 – upgrades to key systems on the full scale platform
- 2024 – Decommissioning of prototype platform

The accumulated project experience in areas of structural design, marine operations, control systems, energy production, mooring systems, etc. has allowed us to achieve the goal of having a demonstrated and validated floating platform.

## 1.2 Technology background

Magallanes was established to investigate and develop new methods of extracting electrical power from tidal currents.

Magallanes Renovables has had a full scale (1.5MW) prototype at the EMEC facility from early 2019 until mid 2023. We have accumulated thousands of hours of operational experience and demonstrated, proven and verified the performance and advantages of the technology, as well as learned from associated challenges.

Previously we developed and tested 2 scale models to inform this prototype.



Figure 1. Evolution of the Magallanes Technology

The platform has been on station and generating on most tides, apart from periods of downtime due to maintenance, upgrades, trials of new and improved systems as well as grid outages (including an outage for over 7 months due to damage to the subsea interconnector serving the island of Eday where the EMEC tidal facility is located and an extended leadtime waiting for a replacement dynamic cable).



Figure 2. Launch of the Prototype ATIR platform

Testing and demonstration activities with the full scale prototype over the last 7 years can be summarised as follows:

Activities	Year	Site	Scope	Result
Launch	2017	Vigo	Assembly & launch from quayside	<ul style="list-style-type: none"> <li>• Assembly in 4 months.</li> <li>• Launched with cranes in Vigo Harbour.</li> <li>• Tow tests (not grid connected) in the bay of Vigo.</li> </ul>
Towing Tests	2018	Vigo	Towing Test, including generation	<ul style="list-style-type: none"> <li>• Towing test 500kW output</li> </ul>
Generation	2019 - 2023	FoW (Orkney)	<ul style="list-style-type: none"> <li>• Generation Test with 1 rotor</li> <li>• 2 rotor, low power</li> <li>• 2 rotor, rated power</li> </ul>	<ul style="list-style-type: none"> <li>• 1 rotor 400kW output</li> <li>• 2 rotors 3 months generation</li> <li>• 2 rotor 1.47MW.</li> <li>• Coeff &gt; 48% peaks</li> </ul>
Major maintenance	2022	Leith	Horizontal heeling and major maintenance	<ul style="list-style-type: none"> <li>• Platform horizontal in dry dock</li> <li>• O&amp;M works</li> </ul>
O&M	2019 - 2023	FoW (Orkney)	O&M Works in FoW Cable and mooring options	<ul style="list-style-type: none"> <li>• O&amp;M works</li> <li>• New cable options</li> <li>• Mooring O&amp;M</li> </ul>
Environmental	2019 - 2023	FoW (Orkney)	Environmental tests and resource assessment	<ul style="list-style-type: none"> <li>• Radar/Sonar</li> <li>• Mammal collision assessment</li> <li>• Birds</li> <li>• ADCP</li> </ul>
H&S	2019 - 2023	FoW (Orkney)	Safe operations	<ul style="list-style-type: none"> <li>• Platform visited more than 200 times</li> <li>• Zero incidents</li> </ul>

**Table 1. Test campaigns with the full-scale prototype**

Generation and operations with the prototype platform over the last 7 years have proven the concept and validated the technology.

Work on the design of the commercial (ATIR 2.0) platform is now complete and has taken lessons learned from the ATIR 1.0 prototype and working with trusted consultants and supply chain partners. The design has been certified by Bureau Veritas - Design Approval (Design Assessment Statement received in January 2024), with full Type Certification expected mid 2025 following construction and deployment of the commercial demonstrator.

### 1.3 1.3 Project background

The first full scale prototype ATIR device has been deployed and operated at EMECs Fall of Warness tidal test site, which has enabled us to assess its performance in real sea conditions over multiple years. This testing has allowed us to progress the ATIR design towards commercial viability.



---

This proposed project will see a new platform based on the commercial design of the technology (the ATIR 2.0), deployed for up to 10 years at the EMEC Fall of Warness site (Berth 1), beginning in 2025. It will replace the previous ATIR1.0 prototype that was deployed at the same berth from 2019 until 2023.

The project aims are as follows:

- Verify and validate the commercial version of the technology, including with an independent electrical power performance assessment.
- Gain experience installing and operating the new platform long term.
- Demonstrate the long term operational performance and reliability of the technology in a real, open sea environment.
- Learn and trial appropriate maintenance operations for long term deployments.
- Develop a business and marketing strategy to assist identification of potential customers.
- Develop the supply chain for further, commercial projects.

Data obtained from this period of testing will be crucial for future projects as it provides valuable information regarding long term operations and maintenance as well as validation of the power performance.

Existing funds have come from two separate funding sources: European Grants and the equity investment from the founder of Magallanes Renovables. These sources will secure the continuous development of Magallanes Renovables technology until its commercialisation, as well as the process of securing future projects.

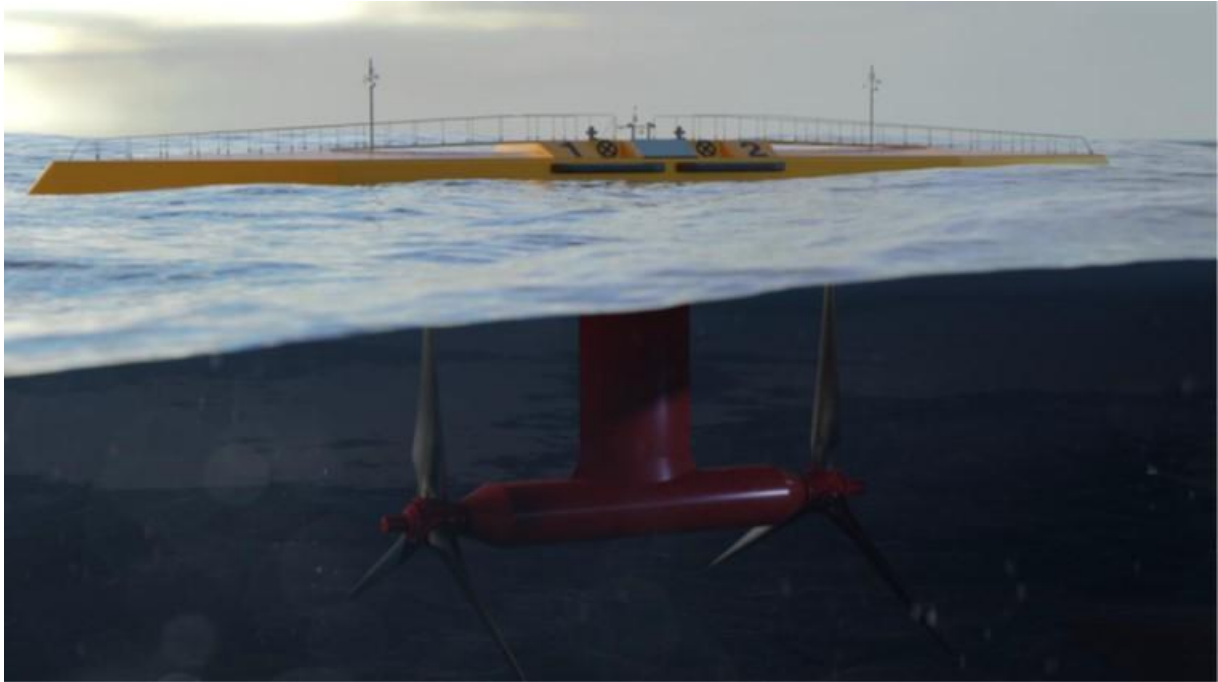


---

## 2 Project Background

### 2.1 Device description

The full scale floating tidal device to be deployed at EMEC under this proposed project consists of a surface floating platform (upper block), with a nacelle and rotors directly below it (lower block) and a 'mast' (vertical block) connecting the two.



**Figure 3. ATIR platform showing 'blocks'**

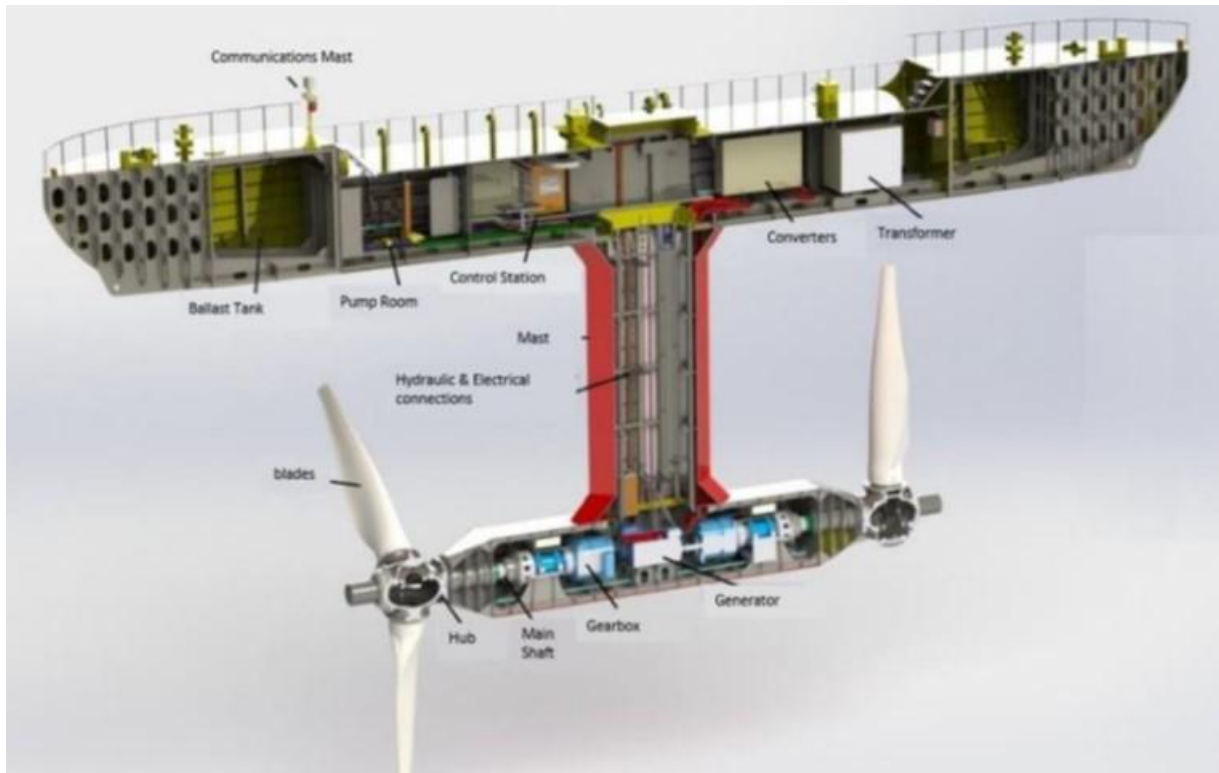
This floating tidal energy converter has a total length of 53.6m, 7m of beam, a minimum draft of 15m without blades and 24m with blades. Its maximum weight with ballast is approximately 600tons.



**Figure 4. ATIR from above**

It has two counter-rotating horizontal axis turbines in series, one behind the other, so that it counteracts the efforts of one turbine with those of the other to avoid list and yaw. Each rotor consists of 3 blades with a rotor diameter of 21m.

Each rotor is equipped with a generator of 850kW of nominal power, and an associated frequency converter; allowing for a peak power of up to 1.7MW; however, the nominal power is limited to 1.5MW. It's moored to the seabed through four mooring lines, two at each end. The device is able to orient itself to different directions of current in a passive way and to generate energy efficiently on both the ebb and flood currents.



**Figure 5. Main components of the ATIR platform**

The floating platform (upper block) is the visible part of the device. It has an upper deck, where the entrance hatches are located. It also has 2 inaccessible compartments on both ends of the block, which are part of the variable ballast system. The accessible part of this block is composed of 3 main rooms, the first of them houses pumps and emergency systems, the other 2 have been designed to accommodate transformers, frequency converters, electric panels and other auxiliary electrical or electronic systems.

The mast (vertical block) fixes the nacelle (lower block) to the platform (upper block). It is a hollow space through which the communication and low-voltage cables connect the equipment housed in the nacelle with the parts of the electrical systems within the upper block. Rigid pipes for environmental acceptable lubricant supply and draining, among others, are also installed in the mast. It also allows access to the lower block for inspection and maintenance.

The nacelle (lower block) is significantly smaller than the upper block and is dedicated to the mechanical PTO systems. This block is where the main shafts, gearboxes and generators are located. As the platform is equipped with two counter-rotating rotors, all the components for the PTO system are duplicated (one for each rotor).

The device has electronic power converters onboard the platform that adapts the energy output to the frequency and phase of the network, in addition, it will also have a step-up transformer that will establish the output voltage of the platform at 11kV - the connection voltage).

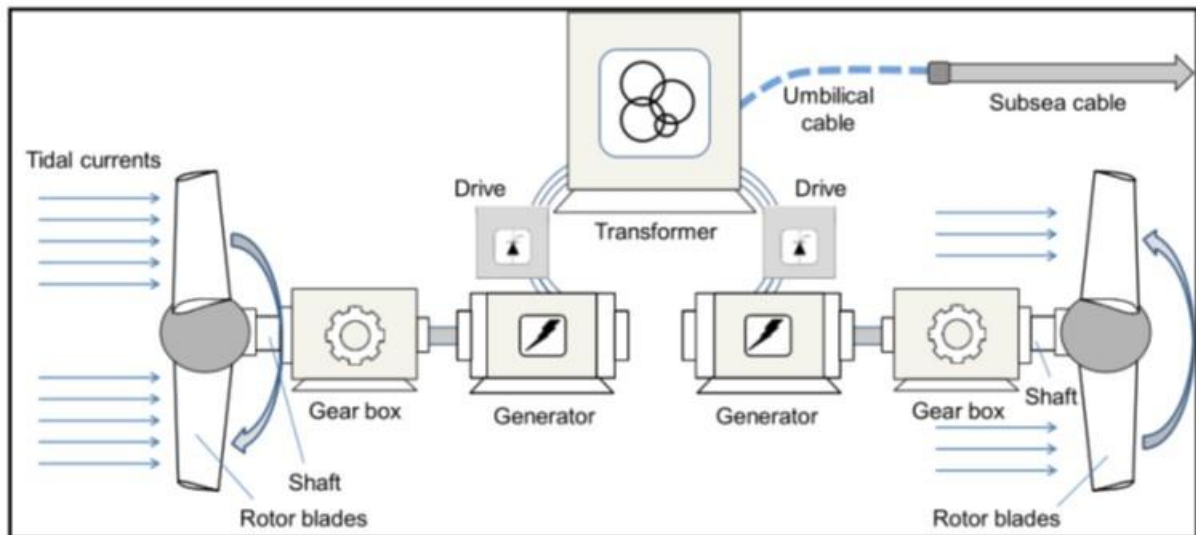


Figure 6. Diagram of electrical power generation from tidal currents

The platform will be connected to the existing EMEC export cable via a dynamic umbilical cable.

## 2.2 Mooring system

The ATIR 2.0 device will utilise the mooring system which currently exists on site and was used for the previously licensed ATIR device. The mooring system consists of 4 mooring lines, 2 at each end fixed to the platform, the mooring lines are redundantly dimensioned so that even if a line breaks, the other line on that side is capable of holding the platform on station.

The following parameters are currently estimated for the site, based on preliminary engineering analysis and modelling undertaken:

- Hull Attachment - A single padeye at the bow and stern, to which a single shackle is connected and from which two mooring lines are attached.
- The total length of chain per leg (including excursion limiters): approximately 290m of 76mm studlink chain.
- Mooring footprint diameter = approximately 500m (250m radius).

Gravity anchors (as detailed lower down) will be used. A basic scheme of the mooring system to be used is illustrated below in Figure 7. Gravity anchors used will be multiple chain clump weights (up to 12 per leg) with a total capacity (wet weight) varying between 90 and 165Te per leg. Anchor sizes will vary due to the statistically derived environmental loading and the larger environmental forces from the North.

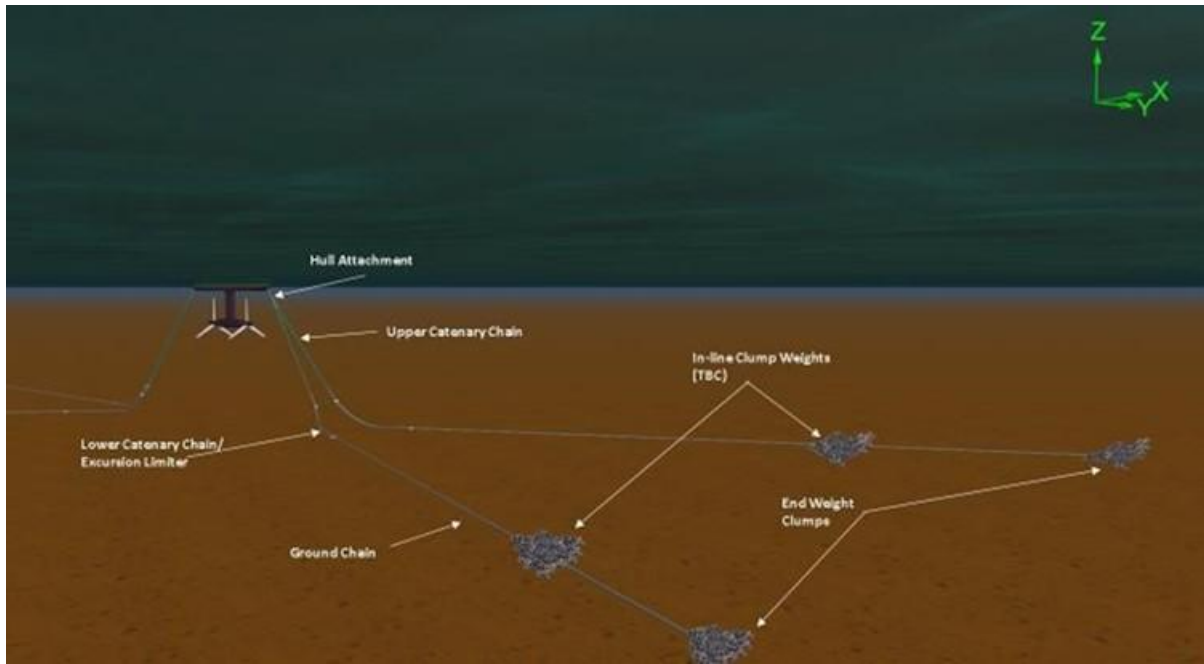


Figure 7. Scheme of mooring system with clump weights

### 3 Key navigational themes

In order to complete this project-specific assessment, a comprehensive review of the site-wide NRA for EMEC's Fall of Warness test site was conducted. The following navigational themes have been considered during the assessment.

#### 3.1 Vessel routing

The Fall of Warness test site is clear of major vessel routes and vessels currently transiting the site appear to be well aware of the deployments across the site.

#### 3.2 Contact / collision risk

Few vessels navigate within the site and the use of appropriate marking and lighting to alert other mariners to the assets onsite should mitigate the risk of contact. All assets onsite should be charted on the United Kingdom Hydrographic Office (UKHO) charts, this information will be promulgated to the UKHO via Notice to Mariners.

#### 3.3 Effects of tide / tidal streams and weather

Vessels take advantage of the lee behind the Muckle Green Holm when the tides are northwesterly. When the flow is from the south-east, vessels keep a wide berth from the Fall of Warness. The tidal streams therefore do not alter the routes of vessels to the area surrounding the platforms.

During consultation it was revealed that during bad weather it was common for ferries to come into the Fall of Warness site. During a strong south-easterly wind, significant overfalls, wave heights and a race can be expected to the south of Eday. Ferries would therefore pass to the east of Muckle Green Holm, come into the EMEC site passing to the north of the SR2000, before turning to come in close to the headland to the south-west of Eday. This allows the vessels some degree of shelter and means that they are not exposed beam on to the conditions.

### 3.4 Under keel clearance

The radius of the blades is 10.5 metres max and the apex of the swept area is 3 metres below the surface. Given the width of the surface platforms (7m), there are potentially 7 metres of swept area either side of the platforms.

For a navigating vessel to collide with the blades, the vessel must be within 7 metres of the device and drawing at least 3.6 metres. It is therefore far more likely that the vessel would collide with a platform than damage the blades, and small vessels would be incapable of contacting the blades. The mooring arrangements are chain and, given the depth of water, will not compromise Under Keel Clearance (UKC) including when scouring is taken into account.

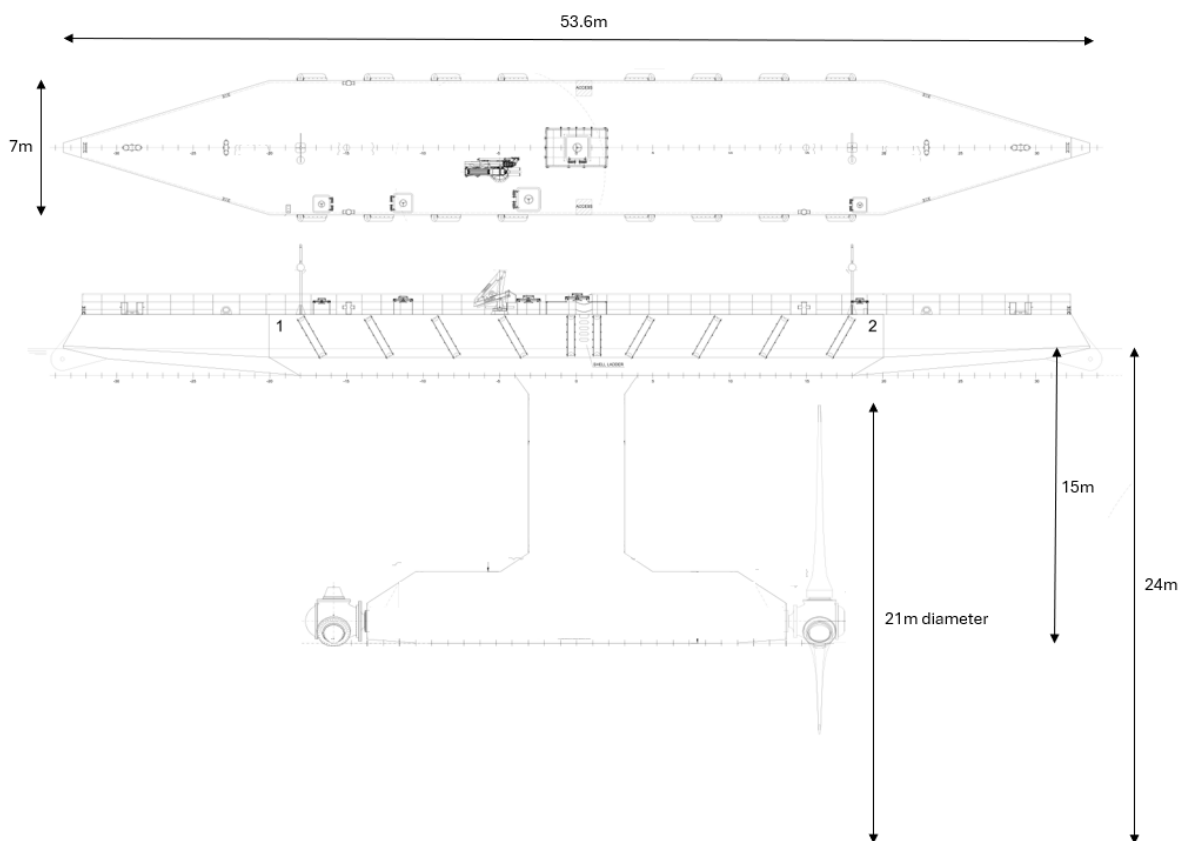


Figure 8. Key Dimensions of the ATIR 2.0

### 3.5 Collision risk and visual navigation

The device is less than 5.5 metres high (approx.4m above the water-line) and will therefore ensure that most vessels will be visible over the top when navigating in the area. The exception may be small craft such as open top RIBs or pleasure craft as well as maintenance vessels working on the device. Prudent mariners will provide sufficient clearance from the device when navigating and this will further reduce the chance of a hidden vessel emerging in a collision scenario.

The location is not on the leading line of any navigational aids nor will significantly alter the visibility of other lights or buoyage. It should be marked in accordance with the requirements



---

of the Northern Lighthouse Board and could serve as an additional aid to navigation for navigating vessels.

As the turbines are subsurface, there would be minimal noise generated and so it would not interfere with sound signals used by vessels or aids to navigation.

### **3.6 Communication, radar and positioning system**

The scale of the assets to be installed during this project are not likely to impact on electronic communication or positioning systems.

### **3.7 Moorings**

The Fall of Warness mooring systems consists of 4 chain catenary legs, two north and two south, attached to the hull at attachments in the bow and stern of each platform. The mooring systems hold the platforms in line with the current flow.

The anchor size has been supported by a statistical assessment of simulated loads using Orcaflex software, namely that the peaks in anchor tensions are momentary spikes of a few seconds in simulated one in 10-year storms.

### **3.8 Station keeping**

GPS Alerting for movement of the devices. Remote monitoring of the devices to detect any major movements that might indicate a breakout for immediate response.

### **3.9 Fishing activity**

Relatively little fishing takes place in the study area and fishermen would generally be expected to take precautions in order to avoid any underwater assets that may be present across the test site.

### **3.10 Recreational activity**

There is no racing or small boat sailing at the test site, most recreational vessels are yachts on passage.

### **3.11 Subsea cables**

There is no evidence of anchoring or gear snagging at Fall of Warness historically.

### **3.12 Search and rescue**

The device will not alter the capability of search and rescue operations in the area, or interfere with neither RNLI or helicopter operations.

### **3.13 Cumulative and in-combination**

The Fall of Warness site, as a device test centre, is home to other devices. Of these, most are well clear with the exception of the Orbital O2. For those deep draught vessels whose passage is through the Fall of Warness, it is likely that they would pass to the west of the ATIR platform and Orbital O2 rather than in between the two devices due to the limited sea room.



---

## 4 Risk controls

### 4.1 Site-wide risk controls

A number of risk controls are embedded by the processes EMEC has implemented in order to operate the site and the layout of the Fall of Warness test site. The embedded risk control measures are detailed in Table 2, with any project-specific actions including any divergence from the specified control discussed.

ID	Embedded control risk	Description
1.	PPE Requirement	Maintenance teams to wear suitable PPE when working on the assets, including life jackets.
2.	Training of staff	Staff to be trained to the required standards for their work and have suitable local knowledge of regulations and operations in the Orkney Islands.
3.	Emergency Response and Cooperation Plan (ERCoP)	ERCoP for site developed and agreed with the MCA and SAR bodies to be consulted.
4.	NtM and Promulgation	In addition to NtM, EMEC's Maritime Safety Information Standard Operating Procedures (SOP) ensures that all key navigational consultees are informed prior to any works. Distribution could include HMCG, Orkney Harbours (available via Orkney Islands Council Marine Services website), Orkney Marina noticeboards (as necessary), Orkney Fisheries Association, Scottish Fisheries Federation and UKHO. Stakeholders are targeted with information about relevant assets based on their activities and location.
5.	Incident monitoring and reporting	EMEC to encourage incident/near miss reporting and monitor any safety issues at the test site. If necessary, risk control to be reviewed. Risk assessments to be reviewed following any incidents.
6.	EMEC Procedures	EMEC has a number of SOPs and standards in place to reduce navigation risks, such as: <ul style="list-style-type: none"> <li>• Task risk assessment;</li> <li>• Control of work (permit to access)</li> <li>• Hazard identification reporting; and</li> <li>• Maritime safety information.</li> </ul>
7.	Hydrography	Contractual responsibility for developer to return the site to the original condition post-decommissioning.
8.	Charting	Site is marked on nautical charts including a chart note.

9.	Site Monitoring	EMEC's SCADA system provides real time status information, trends, alarms and remote-control access to facilitate a safe working environment, comprehensive assessment and safe operation of the sites.
10.	CCTV	Fall of Warness test site is monitored by CCTV, located at Caldale, EMEC's onshore substation, to satisfy operational requirements for control and monitoring of test site activities, visual checks of the test site environment, monitoring of lone worker safety, effective plant operation and substation security.
11.	Liaison with local stakeholders	EMEC regularly liaises with key local stakeholders to identify any potential issues as soon as possible. Regular updates include information regarding upcoming deployments and significant operations at the site.
12.	500m advisory ATBA	A 500m advisory ATBA exists around all test devices located at EMEC test sites.

**Table 2. EMEC embedded risk controls for Fall of Warness test site**

## 4.2 Project-specific risk controls

The following table provides a description of the risk controls that will be implemented during the project.

ID	Project-specific risk control	Description
1.	Radar reflectors	Use of radar reflectors to improve marking during times of poor visibility.
2.	AIS	Use of AtoN AIS (or virtual AIS if permitted) fitted to all surface piercing assets to improve visibility to passing vessels. AIS should be Category 3 with at least 97% up time and use Message 21, or as directed by the Northern Lighthouse Board (NLB).
3.	Heightened monitoring in adverse metocean conditions	During gale force winds, periodic monitoring of the assets is recommended to ensure excessive forces are not acting on the moorings which might cause a breakout.
4.	Inspection and maintenance programme	Regular maintenance regime by developer to check the asset, its fittings and any signs of wear and tear. This should identify any failings which might result in a mooring failure and breakout. Refer to the findings of your third party verification mitigation against device breakage.
5.	Remote shut down including feathering of blades	Device to be fitted with ability to shut down in an emergency, such as feathering any blades or braking to allow access or prevent contact with a vessel.
6.	GPS alert system for asset moving	Remote monitoring of device to detect any major movements that might indicate a breakout for immediate response. Implement GPS excursion monitoring.

7.	Marking and Lighting	Assets to be lit to the requirements of NLB and marked in line with IALA guidance, IALA Guidance G1162 (2021) <sup>1</sup> . The following is typically requested by the NLB: <ul style="list-style-type: none"> <li>• Yellow day marking/painting;</li> <li>• Flashing yellow special mark light (Category 1) (larger devices may require 2 lights at each end which are synchronised; light ranges should be at least 3 nautical miles);</li> <li>• Day top mark (if deemed necessary);</li> <li>• Radar reflector; and</li> <li>• AIS AtoN (mandatory for floating devices at EMEC).</li> </ul> Appropriate statutory sanctions must be in place to exhibit, alter or discontinue lighting.
8.	Tow risk assessment and passage plan	As required under Orkney Harbours Pilotage Directions 4(3) <sup>2</sup> , prior to conducting a towing operation, a risk assessment and passage plan for the move should be conducted. The plan should account for the size of the tow, maneuverability restrictions, tow arrangements and metocean conditions.
9.	Guard vessels	During major construction or maintenance activities, a guard vessel may be considered to assist in protecting the devices from contacts with passing vessel traffic. Due to the low density of traffic, this is not considered necessary except for extraordinary circumstances.  If guard vessels are to be used onsite, it is important that such vessels employed to guard the site follow appropriate guidelines, with clear instructions on when to intervene in a potential incident.

<sup>1</sup> When identifying the marking requirements, it must be taken into consideration that some tidal devices:

- Have fast-moving sub-surface elements such as whirling blades; and
- Do not allow for safe under keel clearance (UKC).

The level of marking should be decided after a risk assessment has been conducted.

It is recommended that:

- a) Subject to the proper risk assessment, areas containing on surface or sub-surface wave or tidal devices are marked by appropriate AtoN. In addition, radar reflectors, retro-reflecting material, racons and / or AIS transponders should be considered where the level of traffic and degree of risk requires.
- b) The AtoN must be visible to the mariner from all relevant directions in the horizontal plane, by day and lighted at night.
- c) Taking the results of a risk assessment into account, lights must have an appropriate nominal range and vertical divergence and may be synchronized.
- d) Individual wave and tidal energy devices within a site that extends above the surface are painted predominantly yellow above the waterline and have yellow retro-reflective tape as required by the competent authority. If navigation is permitted within site, marking of individual devices may be required.
- e) If marked, the individual devices should have flashing yellow lights. The flash character of such lights must be sufficiently different from those displayed on the boundary lights with a nominal range of not less than two Nautical miles.
- f) Floating AtoN could be located outside the moorings of the floating structures.

Based on risk assessment, a single wave or tidal energy extraction structure, standing alone, may be marked as follows:

- isolated Danger mark; or
- special mark.

The AtoN described herein should comply with IALA recommendations and guidelines and have an appropriate availability normally not less than 99.0% (IALA Category 2).

<sup>2</sup> Orkney Islands Council Competent Harbour Authority (2016) The Orkney Pilotage Direction 1988 (as amended 2007, 2010 and 2016).

10.	Liaison with local stakeholders	Consultation should be undertaken with Orkney Marine Services, the MCA and NLB prior to installation of device to confirm that adequate risk controls are in place.  EMEC also conducts regular stakeholder consultation events to ensure that local marine users are aware of the pipeline of activity.
11.	Installation, maintenance and removal	All vessels undertaking activities on site should comply with EMEC standard operating procedures. Vessels should be mindful of other navigating vessels and avoid disrupting the activities of others.
12.	ERCoP	Project-specific annex to be incorporated into site-wide ERCoP.

**Table 3. Project-specific risk controls**

## 5 Summary and conclusion

This document has been prepared to support a marine licence application for the Magallanes ATIR 2 platform in Berth 1. This document is provided as an addendum to and should be read in conjunction with the document 'Fall of Warness Tidal Site Navigational Risk Assessment (NRA) – REP315'. Consultation and drafting of a new site-wide NRA is currently underway and will be available for distribution very shortly. Stakeholders can be updated on progress as required.

In summary, the NRA has concluded that the deployment of the single device is low risk with suitable risk controls in place. EMEC recognises that array projects at the Fall of Warness test site should require a project-specific NRA. However a full project-specific NRA should not be required for this single deployment and the addendum should suffice.

The European Marine Energy Centre Limited

The Charles Clouston Building, ORIC, Back Road, Stromness, ORKNEY, KW16 3AW

**Tel:** 01856 852060

**Email:** [info@emec.org.uk](mailto:info@emec.org.uk)

**Web:** [www.emec.org.uk](http://www.emec.org.uk)

Registered in Scotland no.SC249331

VAT Registration Number: GB 828 8550 90

