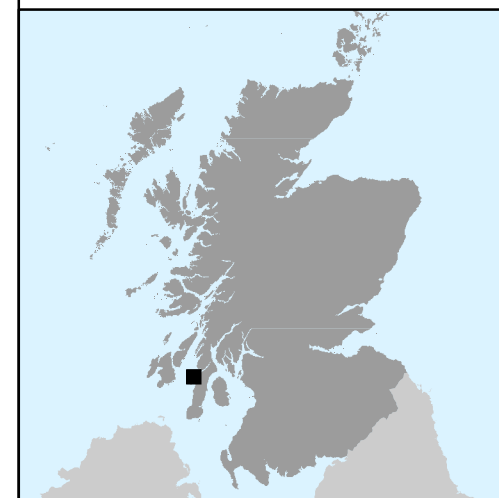
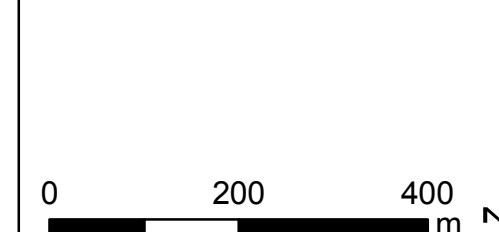




Legend

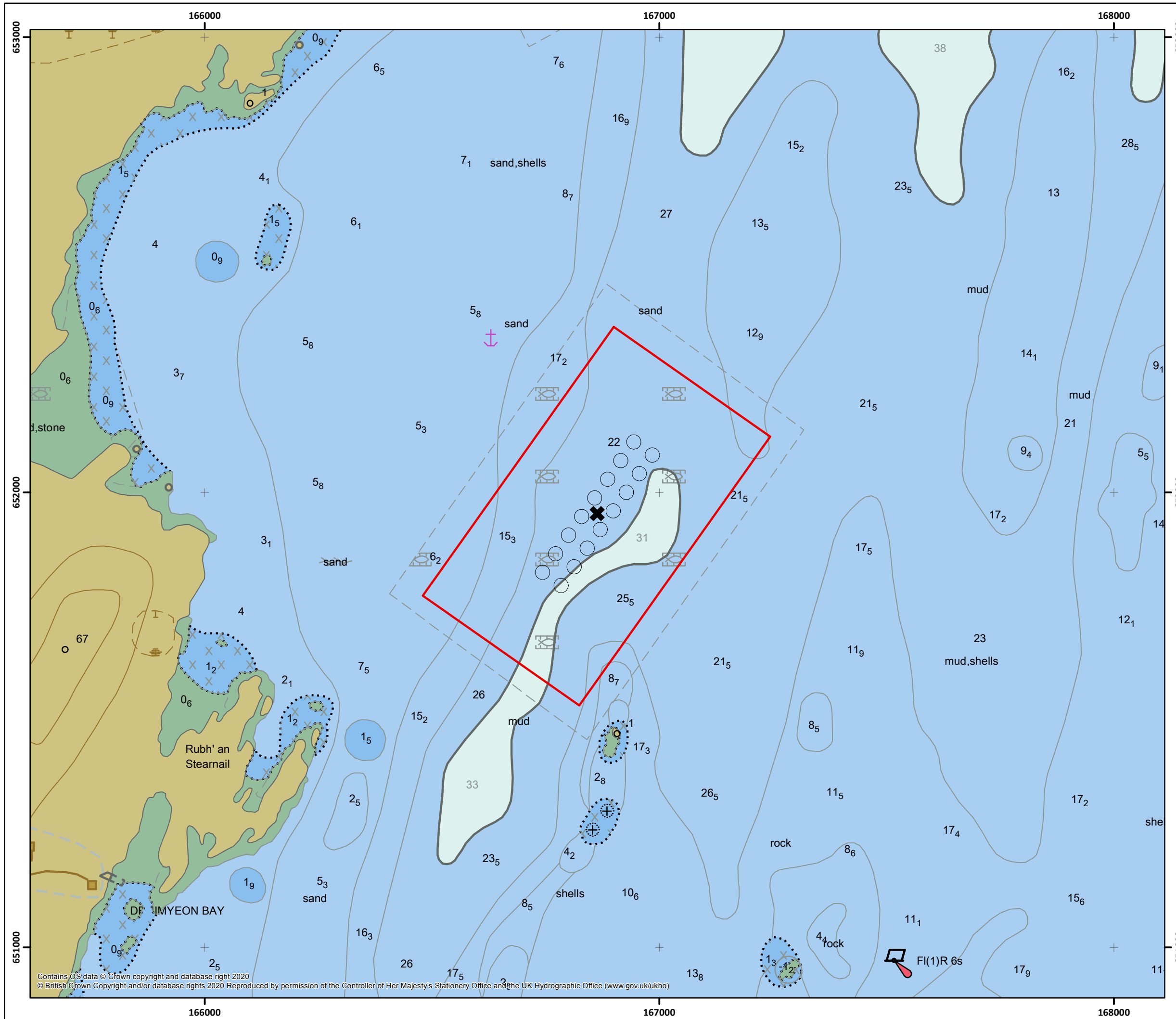
- Mooring Area
- Pen
- ✕ Site Centre
55° 42.288' N, 005° 42.733' W



Drawn by: MED	1:8,000 @A3
Checked by: PH	Revision: A1
Approved By: PH	Date: 09/07/2020

Site Location
Figure 1

Druimyeon Bay
Isle of Gigha



Contains OS data © Crown copyright and database right 2020
© British Crown Copyright and/or database rights 2020 Reproduced by permission of the Controller of Her Majesty's Stationery Office and the UK Hydrographic Office (www.gov.uk/ukho)