

Administration Page

Document Control

| | Name | Position |
|----------------------|---------------------------|--------------------------|
| Principal Author | Jimmy Slaughter | Range Operations Manager |
| Reviewed by | Russ Webster | Range Safety Manager |
| Authorised by | Scott Hammond | Operations Director |
| | | |
| Document Review Date | 18 th Aug 2024 | |

Printed copies of this document are uncontrolled.

Document Revision

| Version | Date | Changes |
|---------|------------|--|
| v1.0 | 19/05/2023 | Initial Issue |
| V1.1 | 18/08/2023 | Revisions post external consultation |
| V2.0 | 29/10/2023 | Further revisions post external consultation |
| | | |

MARITIME EMERGENCY RESPONSE PLAN

CONTENTS

| | |
|--|----|
| Administration Page | 1 |
| Abbreviations..... | 3 |
| 1 Introduction | 4 |
| 2 Site Location | 4 |
| 3 Types of launches | 6 |
| 4 Contact Information..... | 6 |
| 4.1 Onshore | 6 |
| 4.2 Offshore..... | 9 |
| 5 Emergency Response Structure..... | 11 |
| 6 Boundary Boat and Recovery Vessel Information..... | 11 |
| 6.1 Range Monitoring..... | 12 |
| 6.2 Hazard Markings and/or Lights on the Coast..... | 12 |
| 6.3 Pollutants or Environmental Hazards | 12 |
| 6.4 Nearest MRCC and SAR Resources | 13 |
| 7 Procedure in event of launch/rocket failure..... | 13 |
| 8 Shoreside Communications Responsibility | 13 |
| 8.1 Initial Holding Statement..... | 14 |
| Marine Emergency Action Card | 15 |

MARITIME EMERGENCY RESPONSE PLAN

Abbreviations

| | |
|------|--|
| AIS | Automatic Identification System |
| CAA | Civil Aviation Authority |
| CEO | Chief Executive Officer |
| GPS | Global Positioning System |
| HD | High Definition |
| HMCG | His Majesty's Coastguard |
| HP | High Pressure |
| LNLS | Lamba Ness Launch Site |
| LP | Low Pressure |
| MCA | Maritime and Coastguard Agency |
| MHWS | Mean High Water Springs |
| MMSI | Maritime Mobile Service Identity |
| MMF | Mission Management Facility |
| MOB | Man Overboard |
| MRCC | Maritime Rescue Coordination Centre |
| POC | Point of Contact |
| PLB | Personal Locator Beacon |
| ROV | Remotely Operated Vehicle |
| SAIA | Space Accident Investigation Authority |
| Saxa | SaxaVord Spaceport |
| SAR | Search and Rescue |
| VHF | Very High Frequency |

MARITIME EMERGENCY RESPONSE PLAN

1 INTRODUCTION

This Maritime Emergency Response Plan is the contingency plan developed to deal with a maritime related emergency. It has been written in conjunction with the Maritime and Coastguard Agency (MCA) and UK Hydrographic Office, and forms part of the wider Saxa Emergency Response Plan laid out in ERP-001-SAXA Emergency Response Plan. Saxa also has a Multi-Agency Initial Response Plan (ERP-0020MAIRP). The ERP and MAIRP are available on request.

There is a Marine Emergency Action Card (MEAC) at the end of this document. In the event of an emergency and if you have not read this document before or are not familiar with it, go straight to the MEAC and follow the steps within it.

Shetland Space Centre Ltd (trading as SaxaVord Spaceport) is the Duty Holder and the CEO is the Accountable Manager for the Spaceport and Range.

2 SITE LOCATION

SaxaVord Spaceport is located on the island of Unst, in the Shetland Islands, Scotland. SaxaVord Spaceport consists of 2 sites: the Mission Management Facility (MMF), which contains the Saxa Range and client Launch Control Centres, plus Support Facilities at Saxa Vord, and the Lamba Ness Launch Site (LNLS) which includes the Launch Vehicle/Payload Processing Facilities at Lamba Ness. The Range Control Centre acts as the coordinating hub for all range control services, including range safety. Saxa Range control services, operated by Saxa personnel, includes:

1. Co-ordinating arrangements for the activation and operation of the range;
2. Obtaining all necessary information for identifying the range and for co-ordinating its activation and operation;
3. Ensuring that notifications are issued for the protection of persons who might be put at risk by spacecraft or carrier aircraft within the range or in the vicinity of it;
4. Monitoring the range, and the spacecraft or carrier aircraft for which it is provided, to ascertain
 - a. whether the restrictions or exclusions to which the range is subject are complied with;
 - b. whether planned trajectories are adhered to;
5. Communicating any failure to comply with those restrictions or exclusions, or to adhere to those trajectories, for the purpose of enabling any appropriate actions to be taken in response;

The client Launch Control Centre is where the Launch Operator conducts their flight operations.

SaxaVord – Mission Management Facility Plus Support Facilities located at and close to:

60° 47'.871N, 0° 49'.462W.

Lamba Ness – Lamba Ness Launch Site and Launch Vehicle/Payload Processing Facilities occupies the entirety of the Lamba Ness peninsula, located at:

60° 49'.012N, 0° 46'.228W.

Figure 1 Lamba Ness Launch Site and Mission Management Facility in relation to each other.



Figure 1 Lamba Ness Launch Site and Mission Management Facility in relation to each other.

MARITIME EMERGENCY RESPONSE PLAN

3 TYPES OF LAUNCHES

SaxaVord Spaceport is a multi-user spaceport hosting vertical launch operators. Launches will be either sub-orbital or orbital in nature with launch azimuths between 330° and 030° True.

4 CONTACT INFORMATION

4.1 Onshore

Medical emergency

In the event of a medical emergency, dial 999 and ask for the Ambulance Service. During working hours, dialling 01957 711318 will connect to medical personnel at the Healthcare Centre in Unst directly. However, this is only to be considered as a secondary option. Figure 2 Unst Healthcare Centre in relation to the Mission Management Facility. The route between the two is shown by the black line. The distance is 4.5 miles and takes approximately 10 minutes to travel by motorised vehicle.

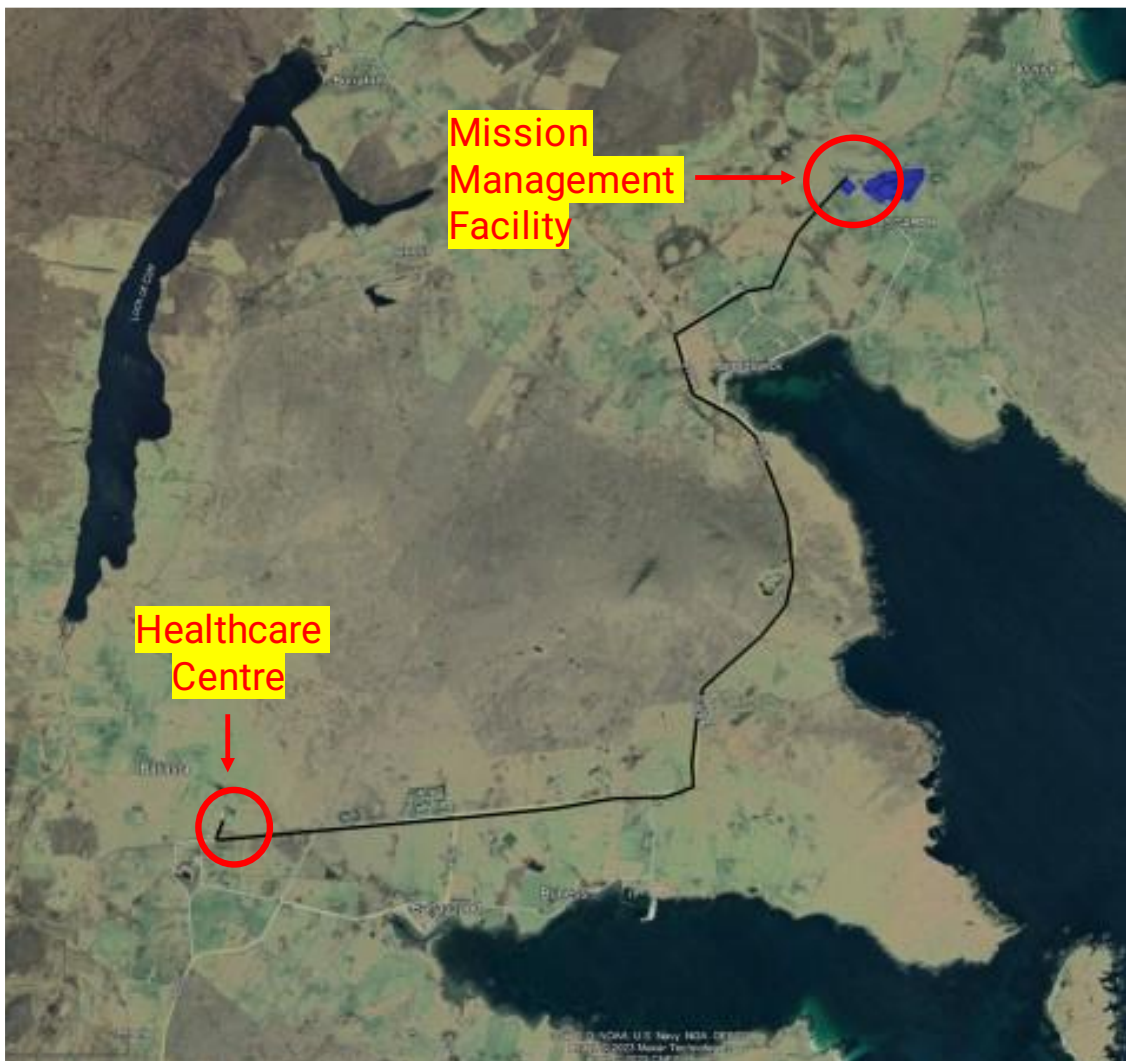


Figure 2 Unst Healthcare Centre in relation to the Mission Management Facility

Out of hours or at weekends, dialling **01595 743000** will connect you to the Gilbert Bain

MARITIME EMERGENCY RESPONSE PLAN

Hospital, Lerwick. Again, this should only be considered as a secondary option for any medical emergency. If calling the Gilbert Bain Hospital out of hours, follow the directions on the recorded message of the Health Centre.

DO NOT HANG UP FIRST. Let emergency personnel hang up first.

Ensure that the SaxaVord Spaceport Emergency Coordinator (currently the Site Engineering Manager) is informed immediately, so that someone can be stationed to direct Emergency Response personnel once they have arrived at the scene of the emergency.

Figure 3 shows the location of Baltasound Airfield in relation to the Healthcare Centre and Mission Management Facility. Medical centre, should airborne casualty evacuation be required. The airfield is also used by HMCG for operational and exercise purposes. The Airfield is approximately 5 miles from the MMF and the journey takes approximately 10 minutes by car. The Healthcare Centre is approximately 2 miles from the Airfield, and this journey takes approximately 5 minutes by car.

For all other emergencies, dial **999**

SaxaVord Spaceport Personnel

Spaceport Operations Manager –01806 220 403

[Site Engineering Manager – \(Phone Number TBC\) ross.gazey@shetlandspacecentre.com](mailto:ross.gazey@shetlandspacecentre.com)

Range Operations Manager – james.slaughter@shetlandspacecentre.com

Range Operations Manager Phone Number - 01479 782042 ext 1010

Range Operations Team - rangeops@shetlandspacecentre.com

Range Operations Team Phone Number - 01479 782040 ext 1008

Back up phone number - 01957 711711

An organisation chart can be seen at Figure 4.

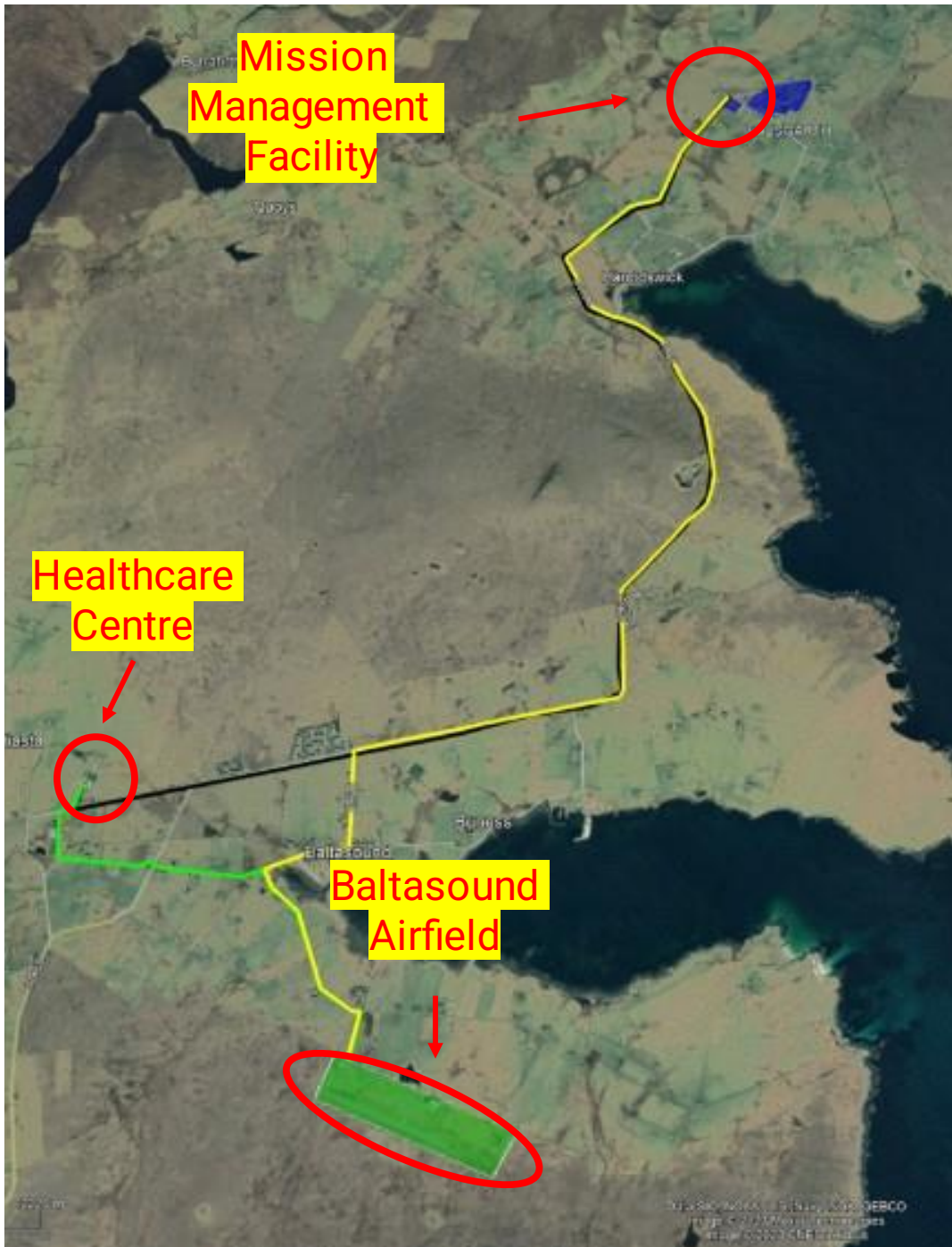


Figure 3 Healthcare Centre and Baltasound Airfield relative locations

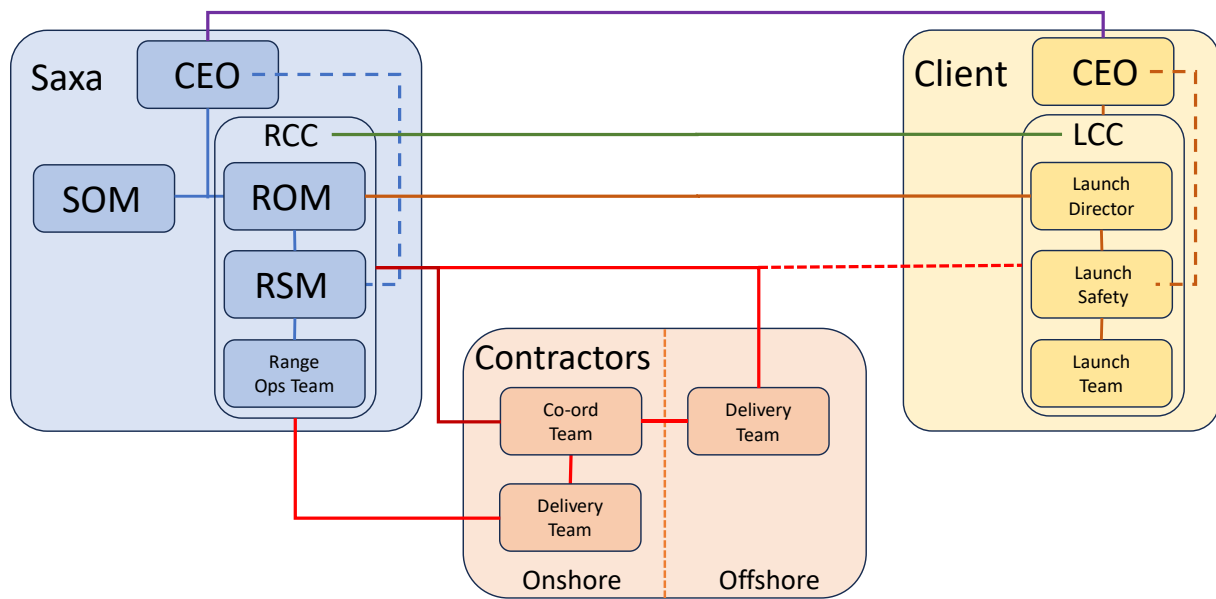


Figure 4 Saxa Organisation Chart

SOM: Spaceport Operations Manager
 ROM: Range Operations Manager
 RSM: Range Safety Manager

Marine Contractor (Boundary and Recovery Vessels)

The marine contractor responsible for the boundary and/or recovery vessel(s) will have a responsible person ashore, perhaps not located at any Saxa facility, who can coordinate any activities necessary from their side.

Details can be added accordingly when appropriate contractor(s) have been appointed.

4.2 Offshore

Medical emergency

Should there be a casualty onboard a vessel it is expected that first aid will be provided on board. This requirement fits under both the International Maritime Organisation (IMO) and the International Convention for the Safety of Life at Sea (SOLAS) and also, for UK based vessels, The Merchant Shipping Regulations.

Rated vessels (IMO and UK Merchant Shipping) are additionally required to follow the Standards of Training, Certification and Watchkeeping (STCW) coding for seafarers, in particular, Chapter 6, which deals with Emergencies and Medical Care.

The vessel should follow SOLAS procedure and activate the GMDSS and await a response. Vessels should consider using VHF means to contact HM Coastguard. Saxa Range Operations will maintain a listening watch on VHF and aid and assist with communications (ie dial 999 and ask for the Coastguard) if appropriate and/or requested.

MARITIME EMERGENCY RESPONSE PLAN

The Saxa MAIRP contains the following:

“On receipt of information from SaxaVord Spaceport concerning a major incident at/or near the Spaceport, Maritime Rescue Co-ordination Centre Shetland will:

- a) For all incidents at sea or below the high water line, HM Coastguard will coordinate the response and will take maritime units, coastal response units and initiate broadcast action to shipping
- b) In the event of coastguard assistance being requested or considered likely by SaxaVord Spaceport dispatch a Coastguard Mobile Unit and rescue team personnel to the Spaceport’s Rendezvous Point or, if off site, report to the Incident Officer
- c) Maintain an accurate log of events, recording all relevant signals and messages”

Maritime Rescue Coordination Centre Lerwick

HM Coastguard
The Knab
Knab Road
Lerwick
Shetland
ZE1 0AX

01595 692976

SAR

“RESCUE 900” based at Sumburgh Airport.

RNLI lifeboats at Aith and Lerwick

UKHO Contact information

Radio Navigation Warnings

Admiralty Way

Taunton

Somerset

TA12DN

Email: navwarnings@ukho.gov.uk

Telephone: +44 (0)1823 353448 (direct line)

Fax: +44 (0)1823 322352

Radio frequencies

Channel 16, 70 (digital selective calling channel) and Channel 67 (for routine purposes).

SaxaVord Spaceport, callsign “Saxa Range Control” and any Boundary Boat(s) or Recovery Vessel(s) used will maintain contact via Channel 16, mobile, and satellite phone links.

MARITIME EMERGENCY RESPONSE PLAN

There are existing procedures in place should HMCG need to contact Saxa for any reason (SAR mission, training exercise, requirement to land at Baltasound airfield etc). These procedures are:

5 EMERGENCY RESPONSE STRUCTURE

The person with the role of emergency planning co-ordination at SaxaVord Spaceport is the Spaceport Operations Manager, who will be based in the Mission Management Facility for the duration of the launch. That said, nothing in this plan shall relieve any person or organisation from any statutory obligation or responsibility.

In the event of an incident or emergency it is the responsibility of the Spaceport Operations Manager, or their nominated deputy, to initiate procedures set out in the Emergency Orders. The Emergency Orders form part of the spaceport manual.

The Range Operations Manager is responsible for coordinating emergency planning for incidents or emergencies that take place within the 'Range'¹ during spaceflight activities. Should an emergency on the seaward side of the MHWS of the Range take place, the Range Operations Manager (or their nominated deputy) will alert HM Coastguard.

HM Coastguard has responsibility for coordination of any required maritime SAR response.

It is essential that, at the earliest possible stage, in order to control access to a potentially dangerous incident location, that consideration is given to applications for both air and, if necessary, maritime exclusion zones around and above SaxaVord Spaceport. This will ensure the safety and security of the site, particularly during the initial response phase when there is likely to be considerable activity by the responding services and other agencies.

6 BOUNDARY BOAT AND RECOVERY VESSEL INFORMATION

In general, Saxa will contract a vessel hire on a launch-by-launch basis to undertake boundary and/or recovery duties. It could also be that the Launch Operator wishes to contract directly with the maritime operator: Saxa will work closely with the Launch Operator to ensure the proposed operation and requirements are fully understood. The MMF will coordinate all communications between vessels in the field during range clearance and recovery operations.

Vessel operators will be required to submit details of their on-board emergency procedures prior to launch operations. In the event of an emergency the vessel master will be responsible for informing the MMF, who will then contact the coastguard and inform any other vessels or aircraft in the field. The vessel will be responsible for initial response to the emergency and have stated procedures for, amongst others:

- Man overboard
- Fire
- Medical Emergency and MEDIVAC
- Oil/Fuel Spill at sea (also perhaps including RP-1 spill at sea)
- Main Engine, electrical power or Steering Failure

¹ "“Range” means a zone which (or two or more zones each of which) is subject to restrictions, exclusions or warnings." 5 (1) Space Industry Act 2018.

MARITIME EMERGENCY RESPONSE PLAN

- Abandoning ship

It is also expected that any vessel undertaking these duties will, as a minimum, be equipped with the following:

- VHF radio. Redundancy communications systems may also be required, such as satellite phone. VHF Channels monitored: 16, 67 and 70.
- Standard life saving equipment, MOB recovery equipment and firefighting equipment such as a deck wash hose or fire extinguishers.
- Medical Equipment – Cat C first aid kit (as required) plus standard workplace first aid kit and eyewash station
- Maritime radar system
- AIS transponder

Additional information on crew PLBs etc will be provided on a launch-by-launch basis.

6.1 Range Monitoring

SaxaVord Spaceport has the following equipment at the launch site to monitor the Space Launch Hazard Area:

- Maritime radar – with detection performance ranging from 6nm for small vessels to >40nm for large vessels
- Optical and thermal primary camera – detection ranges from 10 to 25nm
- AIS and ADS-B with ranges out to approx. 50nm or 250 km for aircraft

An application to enable visualisation of tracks and relevant imagery will be used within the Range Control Centre to allow manual observance of activity and alerts to vessels of interest.

Boundary boats must have radar and AIS on board. Communication will primarily be via VHF radio. A satellite phone will also be available for additional ship to shore communications: details TBD for each launch.4.2

6.2 Hazard Markings and/or Lights on the Coast

Nil

6.3 Pollutants or Environmental Hazards

Will be notified on a launch-by-launch basis. The marine contractor will be notified in advance if there are substances hazardous to health on-board recovered rocket components, especially if they are to recover debris.

Most launch vehicles will be propelled by a kerosene fuel (RP-1) with a liquid oxidiser (LOx) but some may contain more noxious substances and so due regard must be taken in assessing downwind safety distances for any craft at sea

Additionally, the marine contractor will be briefed on maintaining appropriate safety distances offshore as a Launch Vehicle may contain noxious substances. These measures will ensure that appropriate PPE is specified and available.

MARITIME EMERGENCY RESPONSE PLAN

6.4 Nearest MRCC and SAR Resources

Maritime Rescue Coordination Centre Lerwick, see section 4.2 above. Should HMCG need to contact Saxa due to a maritime emergency not associated with the launch activity (ie, a SAR event), then they should call:

Saxa Range Operations on 01479 782040 ext 1008

7 PROCEDURE IN EVENT OF LAUNCH/ROCKET FAILURE

In the event of a launch or rocket failure which effects the marine domain the operator must follow the following procedures:

- If debris falls within the planned Splashdown Area or Space Launch Hazard Area, a RNW will have already been issued and vessels do not need to be informed.
- If floating debris is still present in the maritime environment after the completion of any Launch Activity and cessation of supporting navigation warnings, issue an updated temporary RNW and HMCG must be informed within 30-minutes. Information provided should include size, material, mass, position and time of floating debris. Examples would include failed or aborted recovery of vehicles or debris.
- If debris falls outside of the planned Splashdown Area or Space Launch Hazard Area, issue an updated temporary RNW and HMCG must be informed within 30-minutes. Information provided should include size, material, and mass of likely floating debris; the estimated position and time and if recovery is expected.

Any reports of floating debris or other marine hazards made directly to the launch operator by vessels, aircraft or any other means, should be forwarded to UKHO to issue an official RNW and HMCG as soon as practicable after receiving the report.

8 SHORESIDE COMMUNICATIONS RESPONSIBILITY

The task of dealing with media pressure onshore at the scene of any major incident is primarily the responsibility of the Police once they are on-scene. Media personnel may already be on-site to cover a launch when an incident occurs or could attempt to reach SaxaVord Spaceport very quickly, as they will often have heard of the incident at the same time as the emergency services. In the case of a major incident it is likely to be prudent to hand over control of access to the Spaceport site to the Police as rapidly as possible as significant numbers of press arriving at an ongoing incident could jeopardise safety and control of the situation. For Search and Rescue Operations at sea, the MCA will lead the response.

It has been agreed that in the absence of the Police Public Communications Advisor, particularly during the initial stages of a major incident, advantage will be taken of the professional media personnel from Shetland Islands Council and Shetland Health Board to assist with all media related matters, in particular, the organisation and management of media briefings.

However, the police have the co-ordinating role in managing media response and any media release should only be made in liaison with Police Service of Scotland on call or designated media representative who can be contacted through the Area Control Room Inverness.

MARITIME EMERGENCY RESPONSE PLAN

- Saxa media POC: Paul Riddell paul.riddell@shetlandspacecentre.com
- Shetland Islands Council media POC – Carol Anderson. carol.anderson@shetland.gov.uk
- Shetland Health Board POC – Amy Gallivan. amy.gallivan2@nhs.scot
- Police media POC – NewsDesk@scotland.police.uk
- MCA – public.relations@mcga.gov.uk. Outside Mon Fri 0900-1700, bank holidays and weekends, media enquiries only should have #urgent in the subject title

8.1 Initial Holding Statement

This initial holding statement will be issued automatically by the Duty Officer, Police Service of Scotland Area Control Room, once it is clear that an incident has occurred at SaxaVord Spaceport. The statement will be along the following lines:

"An incident has occurred at (time and date) at SaxaVord Spaceport which is operated by Shetland Space Centre Limited. Emergency services are currently at the scene and an update will be given when further information becomes available."

The purpose of this initial holding statement is to provide time to create a more detailed and considered statement with the engagement of a number of relevant parties, most critically: Management and Media Liaison staff from Shetland Space Centre, representatives from the CAA Regulator and potentially the SAIA and UK Space Agency.

MARITIME EMERGENCY RESPONSE PLAN

MARINE EMERGENCY ACTION CARD

In the event of a casualty to shipping the following actions are to be taken in this Marine Emergency Action Card:

| No. | Saxa Control Actions (Range Control) | Comment / Tick |
|---|---|----------------|
| 1. | Contact vessel to gather information | |
| | a. Number of personnel on board | |
| | b. Type of cargo or any hazardous | |
| | c. Any personnel casualties | |
| | d. Nature of vessel casualty, damage, fire, flooding, stability | |
| | e. Any pollution or danger of pollution | |
| | f. What assistance required. | |
| 2. | Contact Coastguard who will instigate Search and Rescue response | |
| 3. | Contact other Emergency services as necessary | |
| 4. | Contact Spaceport Operations Manager, Range Operations Manager | |
| 5. | Broadcast navigational warnings to all ships in area, advising of the incident | |
| 6. | Ensure other vessels are not put at risk | |
| 7. | Record events in the log | |
| 8. | Obtain weather forecast and tidal information for next 24hrs | |
| 9. | Brief Ops Director and Accountable Manager | |
| Actions for Spaceport Operations Manager and Range Safety Manager | | |
| A | Provide information to the Coastguard in Search and Rescue | |
| B | Act as coordination centre for other emergency services (if required) | |
| C | Prepare media response (as instructed by Accountable Manager) | |
| D | Obligated to report to the Marine Accident Investigation Board (MAIB), this is a separate procedure | |
| E | Next of Kin: Communications, Travel and Accommodation (Hospital) | |
| F | Collate witness statements, gather evidence, draft Incident Report | |
| G | Review Emergency Response performance | |

MARITIME EMERGENCY RESPONSE PLAN

9 CONSOLIDATED CONTACT LIST

Unst Healthcare Centre: **01957 711 318**

Gilbert Bain Hospital, Lerwick: **01595 743 000**

Spaceport Operations Manager: **01806 220 403**

Range Operations Manager: **01479 782 042 ext 1010**

Range Operations Team Phone Number: **01479 782 040 ext 1008**

Back up phone number: **01957 711 711**

Maritime Rescue Coordination Centre Lerwick: **01595 692 976**

UKHO Radio Navigation Warnings: **01823 353448**