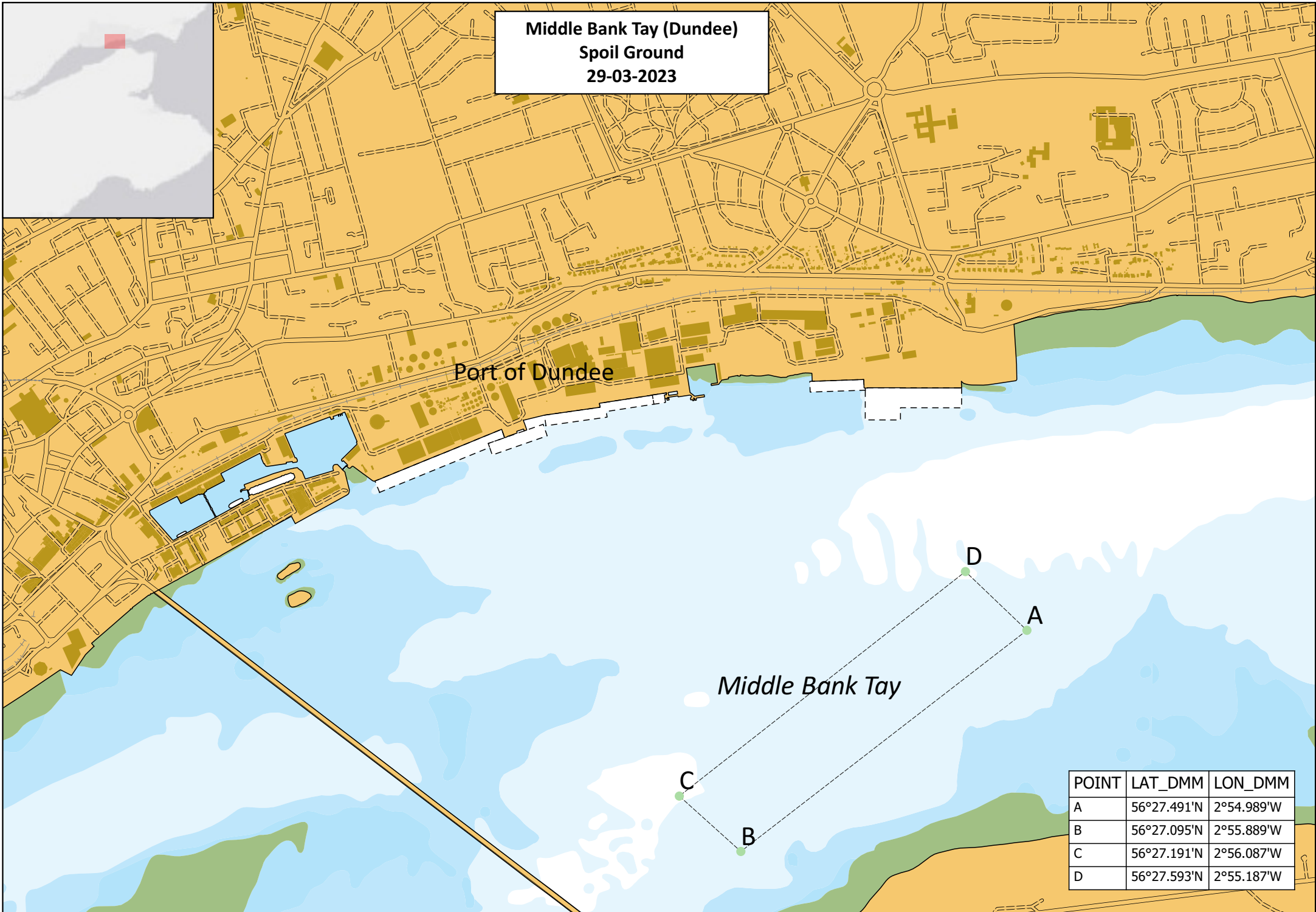


Middle Bank Tay (Dundee)
Spoil Ground
29-03-2023



Port of Dundee

Middle Bank Tay

POINT	LAT_DMM	LON_DMM
A	56°27.491'N	2°54.989'W
B	56°27.095'N	2°55.889'W
C	56°27.191'N	2°56.087'W
D	56°27.593'N	2°55.187'W