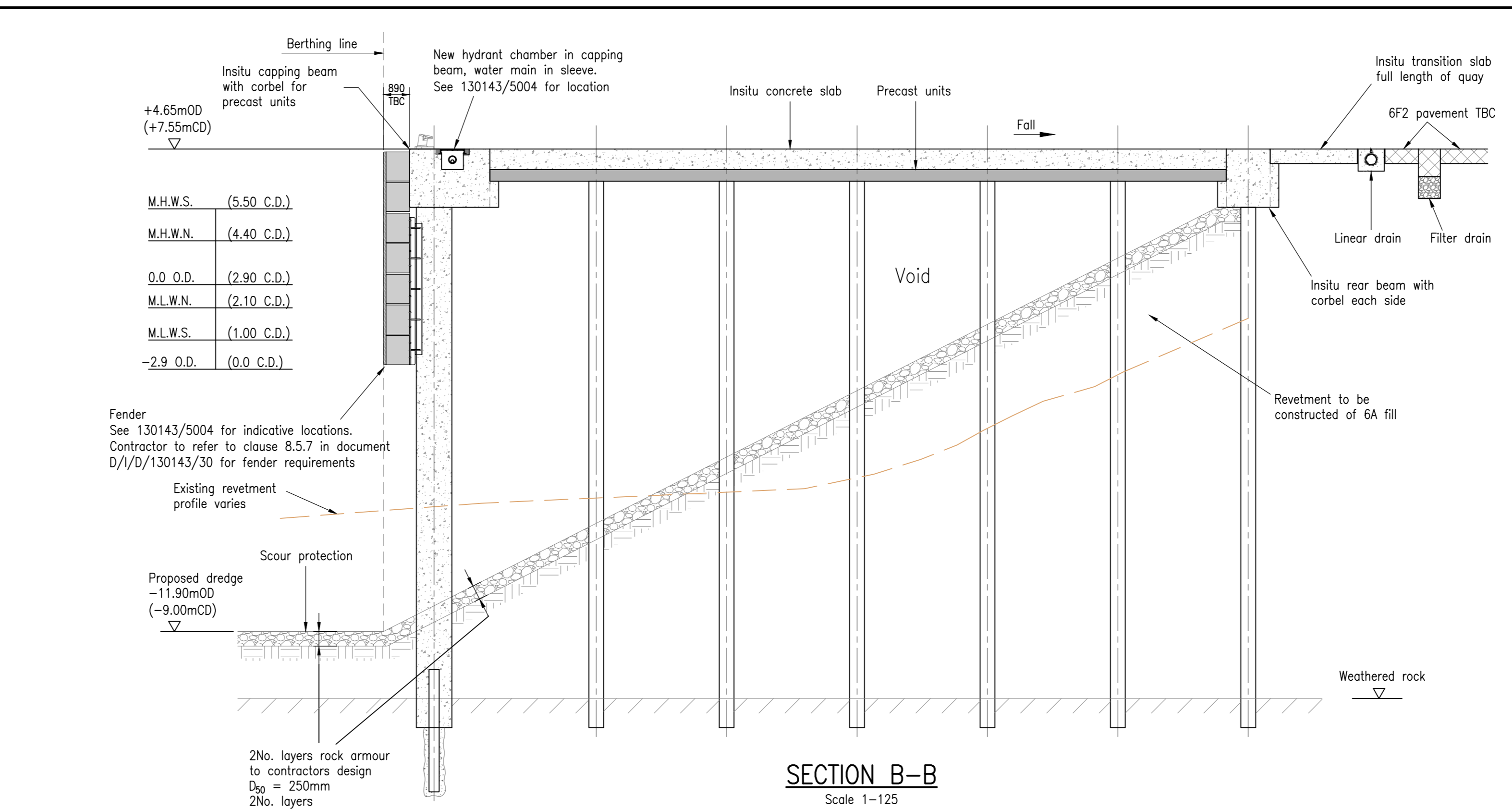
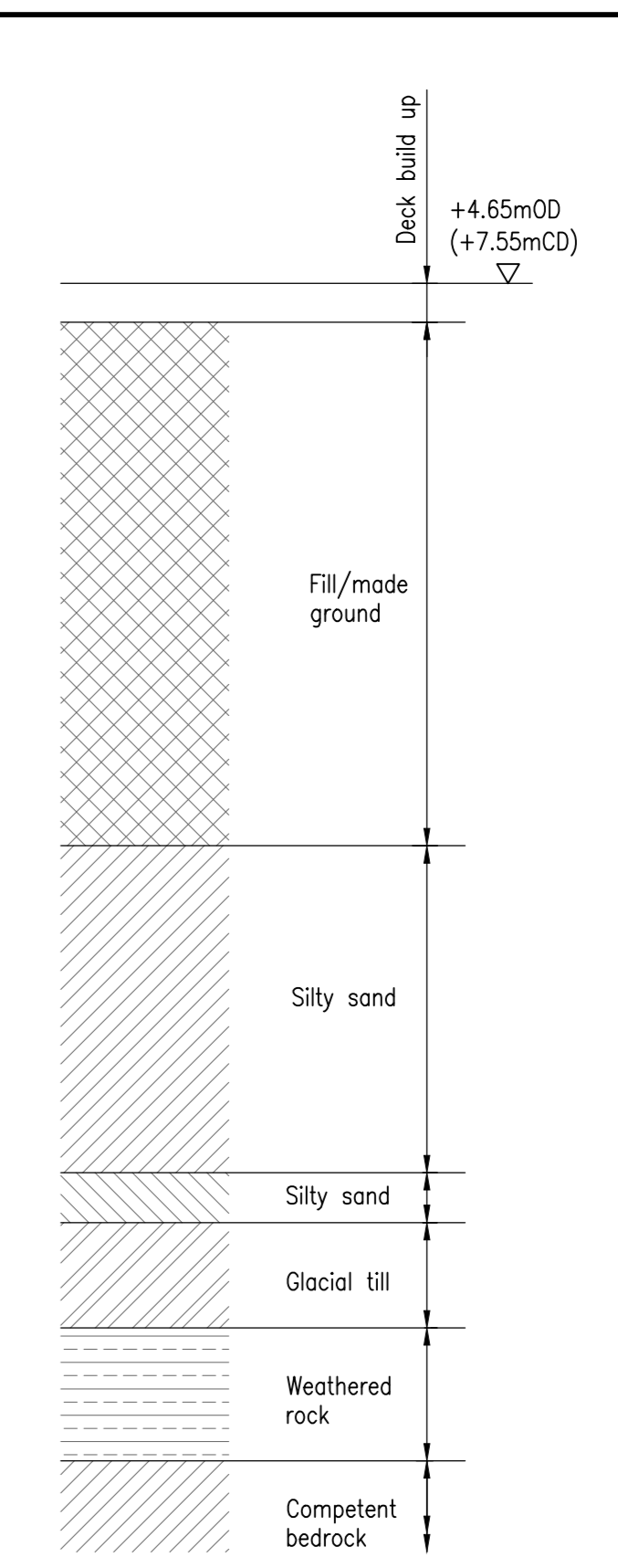


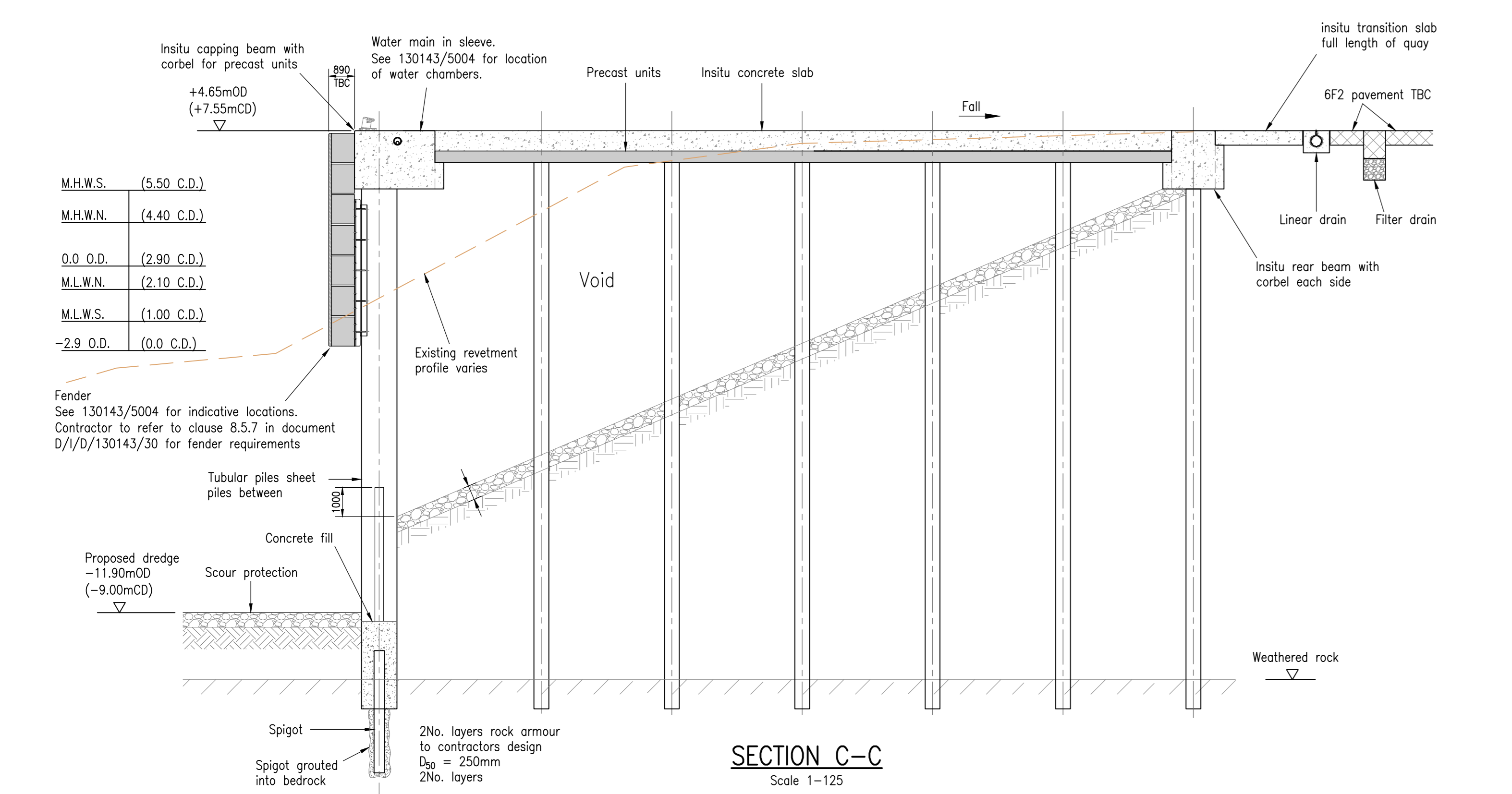
SECTION A-A
Scale 1-125



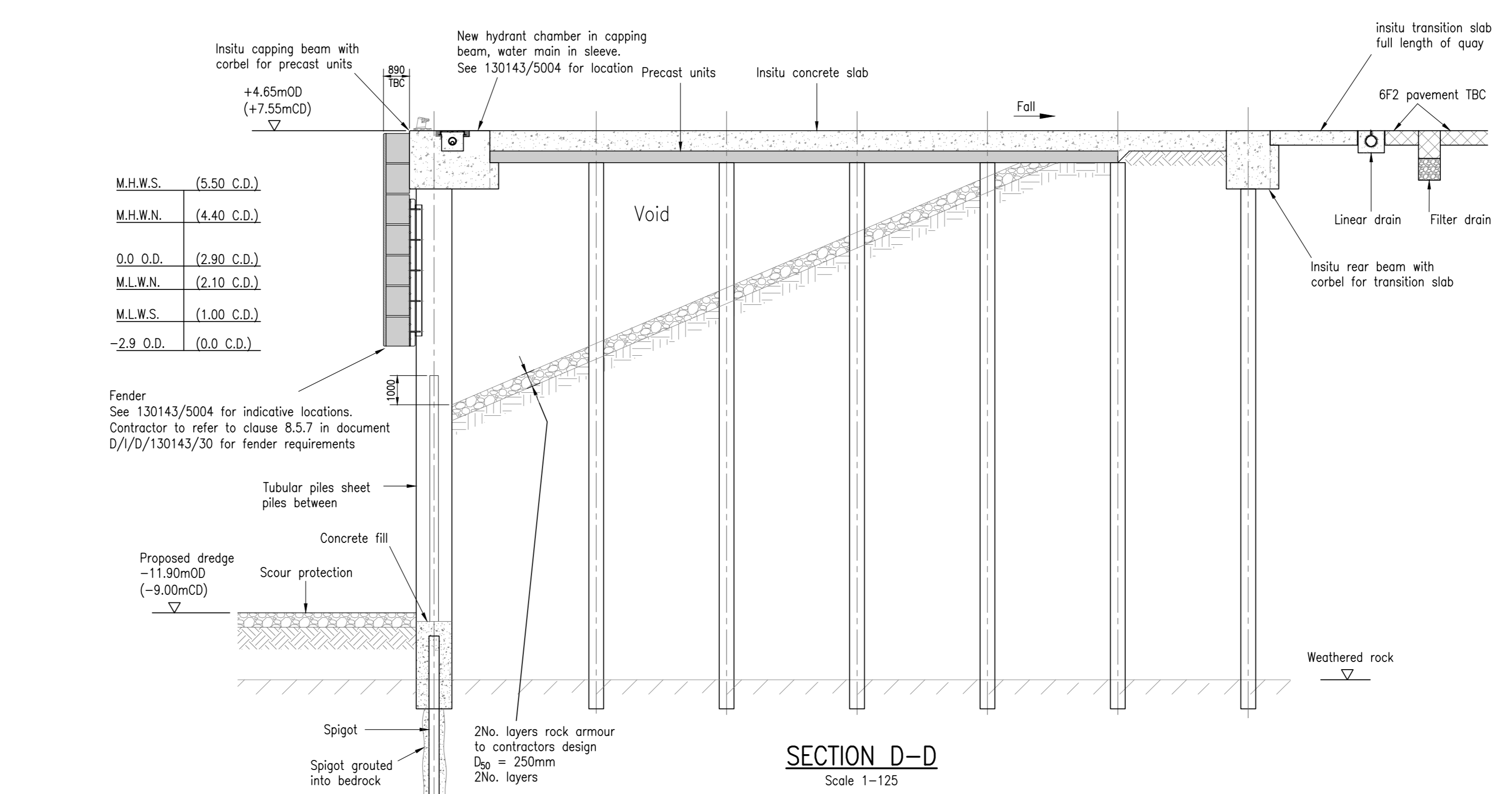
SECTION B-B
Scale 1-125



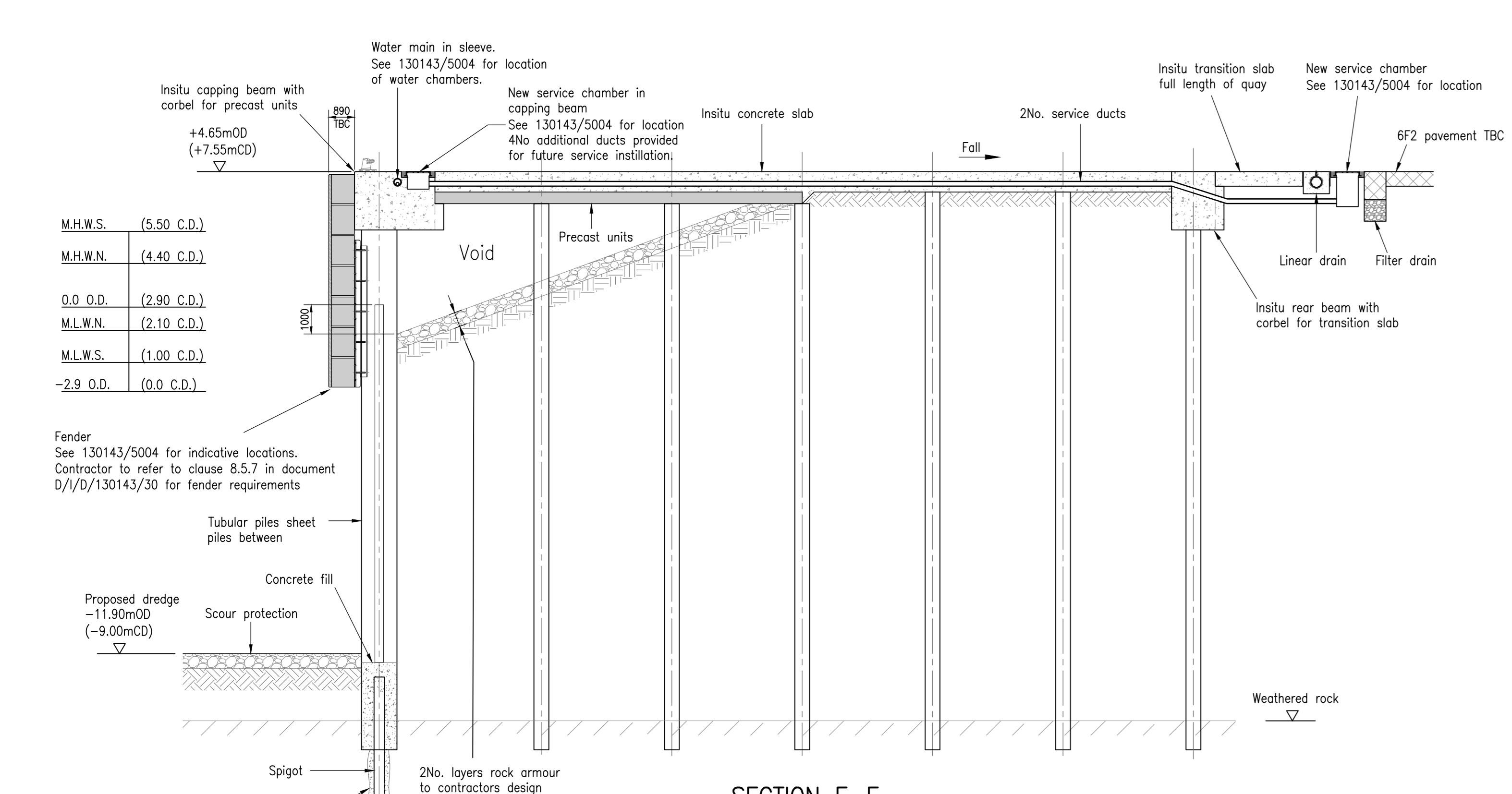
TYPICAL SECTION THROUGH GROUND STRATA
Scale 1-125



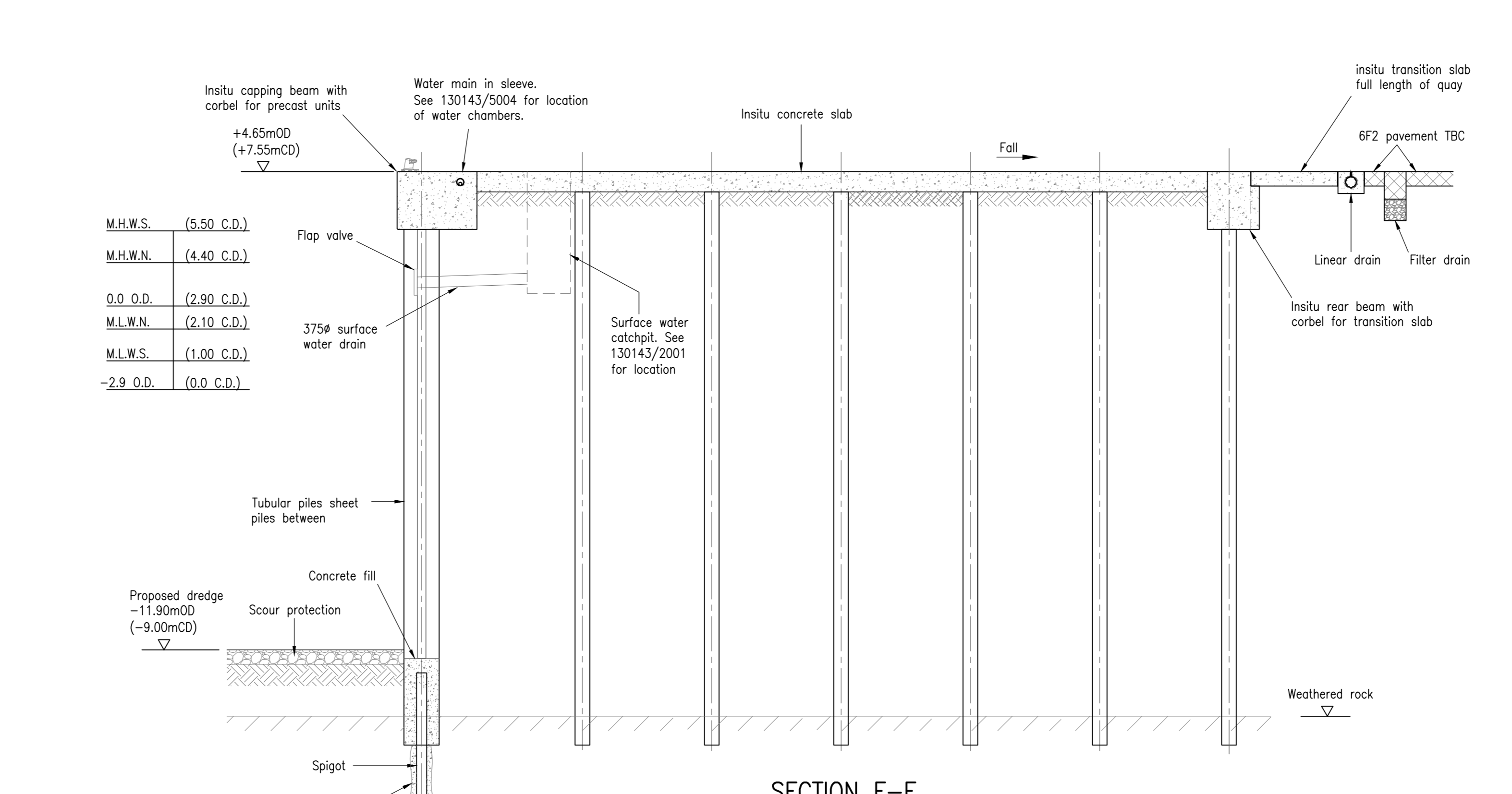
SECTION C-C
Scale 1-125



SECTION D-D
Scale 1-125



SECTION E-E
Scale 1-125



SECTION F-F
Scale 1-125

Do not scale from this drawing.

SAFETY HEALTH AND ENVIRONMENTAL INFORMATION

IN ADDITION TO THE HAZARD/RISKS NORMALLY ASSOCIATED WITH THE TYPES OF WORK DETAILED ON THIS DRAWING, NOTE THE FOLLOWING RISKS AND INFORMATION:

RISKS LISTED HERE ARE NOT EXHAUSTIVE. REFER TO DESIGN ASSESSMENT FORM NO.

CONSTRUCTION

UNSTABLE STRUCTURES - PRECAST UNITS.
WORKING AT HEIGHT
TIDAL WORKING

DEMOLITION

NO ABNORMAL HAZARDS

FOR INFORMATION RELATING TO USE, CLEANING AND MAINTENANCE SEE THE HEALTH AND SAFETY FILE

IT IS ASSUMED THAT ALL WORKS WILL BE CARRIED OUT BY A COMPETENT CONTRACTOR WORKING, WHERE APPROPRIATE, TO AN APPROVED METHOD STATEMENT.

• PILING OBSTRUCTIONS.
• CORRECT SEQUENCING TO ENSURE STABILITY.
• MAINTAIN CORRECT PILE GRID AROUND OBSTRUCTIONS.
• AS BUILT SURVEY PRIOR TO ORDERING REBAR.
• CAPWAP TESTING OF INITIAL 10% OF PILES AND ALSO ADDITIONAL 10% OF FINAL PILES.

Notes:

- Refer to S.I. data report D/I/D/130143/5004.
- Piles driven to top of weathered bedrock strata.

| Rev | Date | Description | Drawn | Checked | Approved |
|-----|----------|----------------------------------|-------|---------|----------|
| E | 04/02/20 | FENDER NOTE REVISED | SB | MD | MC |
| D | 20/01/20 | MINOR REVISIONS | SB | MD | MC |
| C | 13/01/20 | REVISED TO SUIT CLIENTS COMMENTS | SB | MD | MC |
| B | 08/01/20 | REVISED TO SUIT CLIENTS COMMENTS | SB | MD | MC |
| A | 23/12/19 | MINOR REVISIONS | SB | MD | MC |

Project Title: **PORT OF DUNDEE EAST REDEVELOPMENT**

FAIRHURST
1 Kingsway Court, Broom Road, Newcastle-upon-Tyne, NE4 6BE
Tel: 0191 231 0625 Fax: 0844 381 4412

Scale of A3: 1:125
Status: Preliminary

Drawn: SB
Checked: MD
Date: 12/12/19

Approved: MC
Date: 12/12/19

Drawing No: **130143/5005**

Project File: **MARINE WORKS NEW QUAYSIDE RORO BERTH SECTIONS**

FORTH PORTS DUNDEE

DRAWING FOR ILLUSTRATION PURPOSES ONLY AND NOT FOR CONSTRUCTION