

Do not scale from this drawing.

SAFETY HEALTH AND ENVIRONMENTAL INFORMATION

IN ADDITION TO THE HAZARD/RISKS NORMALLY ASSOCIATED WITH THE TYPES OF WORK DETAILED ON THIS DRAWING, NOTE THE FOLLOWING RISKS AND INFORMATION:

RISKS LISTED HERE ARE NOT EXHAUSTIVE. REFER TO DESIGN ASSESSMENT FORM NO.

CONSTRUCTION

UNSTABLE STRUCTURES - PRECAST UNITS.
WORKING AT HEIGHT
TIDAL WORKING

DEMOLITION

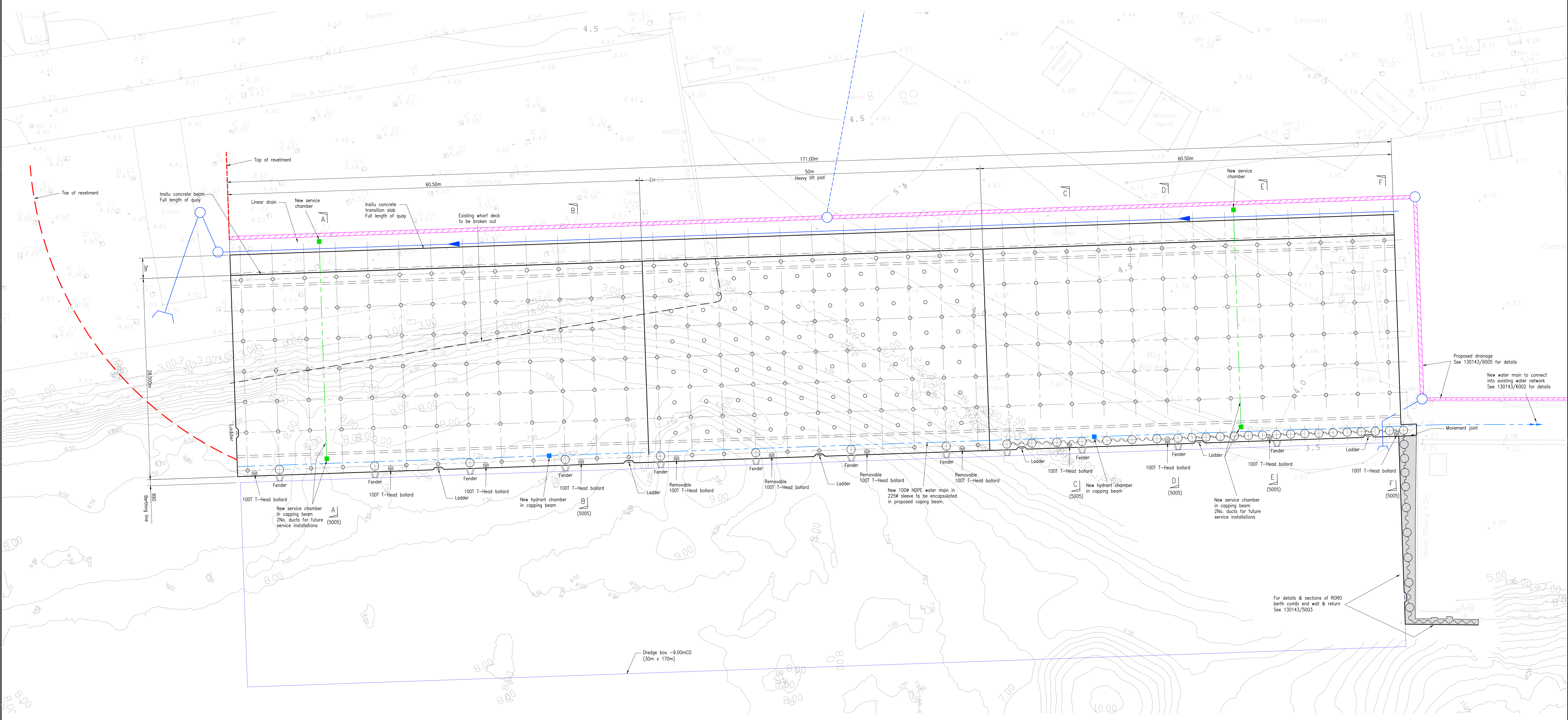
NO ABNORMAL HAZARDS

FOR INFORMATION RELATING TO USE, CLEANING AND MAINTENANCE SEE THE HEALTH AND SAFETY FILE

IT IS ASSUMED THAT ALL WORKS WILL BE CARRIED OUT BY A COMPETENT CONTRACTOR WORKING, WHERE APPROPRIATE, TO AN APPROVED METHOD STATEMENT.

PRINCIPAL RESIDUAL DESIGN RISKS

- PILING OBSTRUCTIONS.
- CORRECT SEQUENCING TO ENSURE STABILITY.
- MAINTAIN CORRECT PILE GRID AROUND OBSTRUCTIONS.
- AS BUILT SURVEY PRIOR TO ORDERING REBAR.
- CAPWAP TESTING OF INITIAL 10% OF PILES AND ALSO ADDITIONAL 10% OF FINAL PILES.



PLAN ON PROPOSED QUAY WORKS
Scale 1-200

Rev	Date	Description	Drawn	Checked	Approved
F	04/02/20	TOPO UPDATED	SB	MD	MC
E	24/01/20	REVISED TO SUIT CLIENTS COMMENTS	SB	MD	MC
D	20/01/20	MINOR REVISIONS	SB	MD	MC
C	13/01/20	REVISED TO SUIT CLIENTS COMMENTS	SB	MD	MC
B	08/01/20	REVISED TO SUIT CLIENTS COMMENTS	SB	MD	MC
A	11/12/19	MINOR REVISIONS	SB	MD	MC

- Notes:
- C.D. = -2.90m O.D.
 - All levels shown are metres relative to O.D. UNO
 - Indicates CHS deck bearing pile.
 - Indicates CHS fender pile. Piles to be concrete filled full length.
 - Insitu deck concrete & P.C. concrete to contractor design to BS8500-1 & BS6349.
 - Contractor to confirm dimensions on site prior to construction.
 - Exposed steel below L.A.T. to be protected by a C.P. system. (Contractor design)
 - Geographical stratigraphy may vary from that shown. Refer to SI reports.
 - All exposed edges to have 25mm chamfer U.N.O.
 - Finish to exposed concrete surface to be light brush finish.
 - Copwop tests to be carried out on an agreed 10% of bearing piles, to 2.0 x SWL.
 - Refer to specification D1/D/130143/30 for loading requirements.

For PCW strengthening details refer to drawings 130143/4201 & 4202.

For details & sections of RORO berth combi end wall & return See 130143/5003

FAIRHURST
1 Kingsway Court, Broomfield Road, Newcastle-upon-Tyne, NE4 6BE
Tel: 0191 221 0265 Fax: 0844 381 4412

FORTH PORTS
DUNDEE

Project Title: **PORT OF DUNDEE EAST REDEVELOPMENT**

Drawing No: **130143/5004**

Scale of A2: 1:200

Drawn: SB, Checked: MC, Date: 30/09/19

Approved: SB, Date: 30/09/19

Project Title: **MARINE WORKS NEW QUAYSIDE RORO BERTH GENERAL ARRANGEMENT**