


LOCATION PLAN

LEGEND

Consenting Boundary

**A1**

Registered Office:
NorthConnect KS
Serviceboks 603
Lundsliden
4606 Kristiansand
Norway

Telefon +47 38 60 70 00
Fax +47 38 60 70 01
E-post: post@northconnect.no
www.northconnect.no

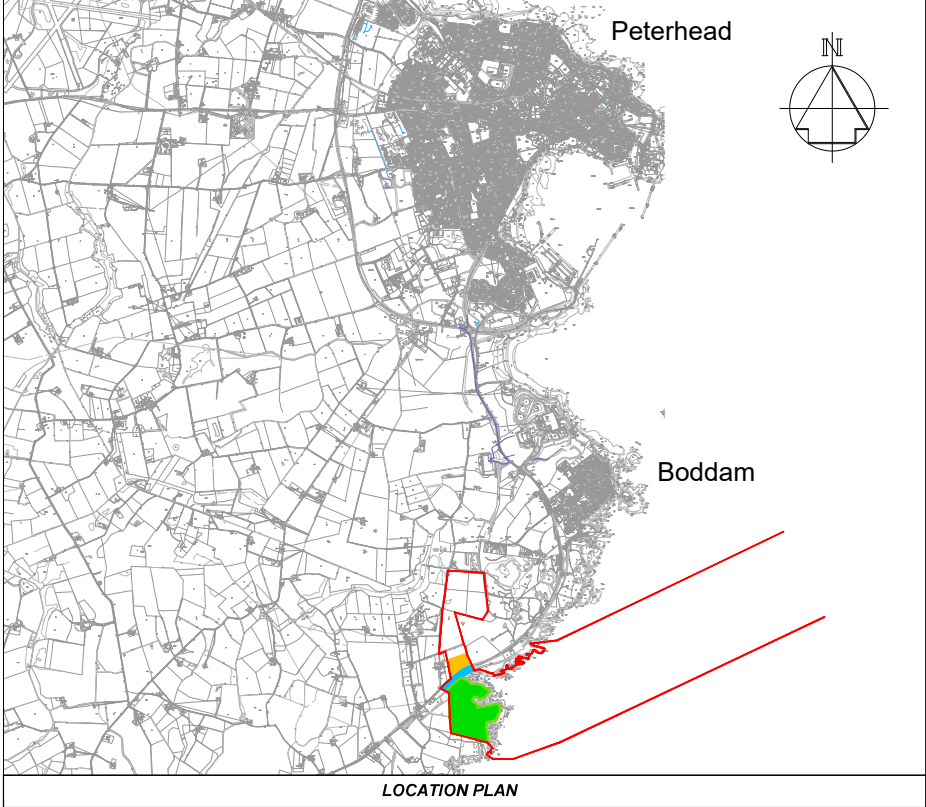
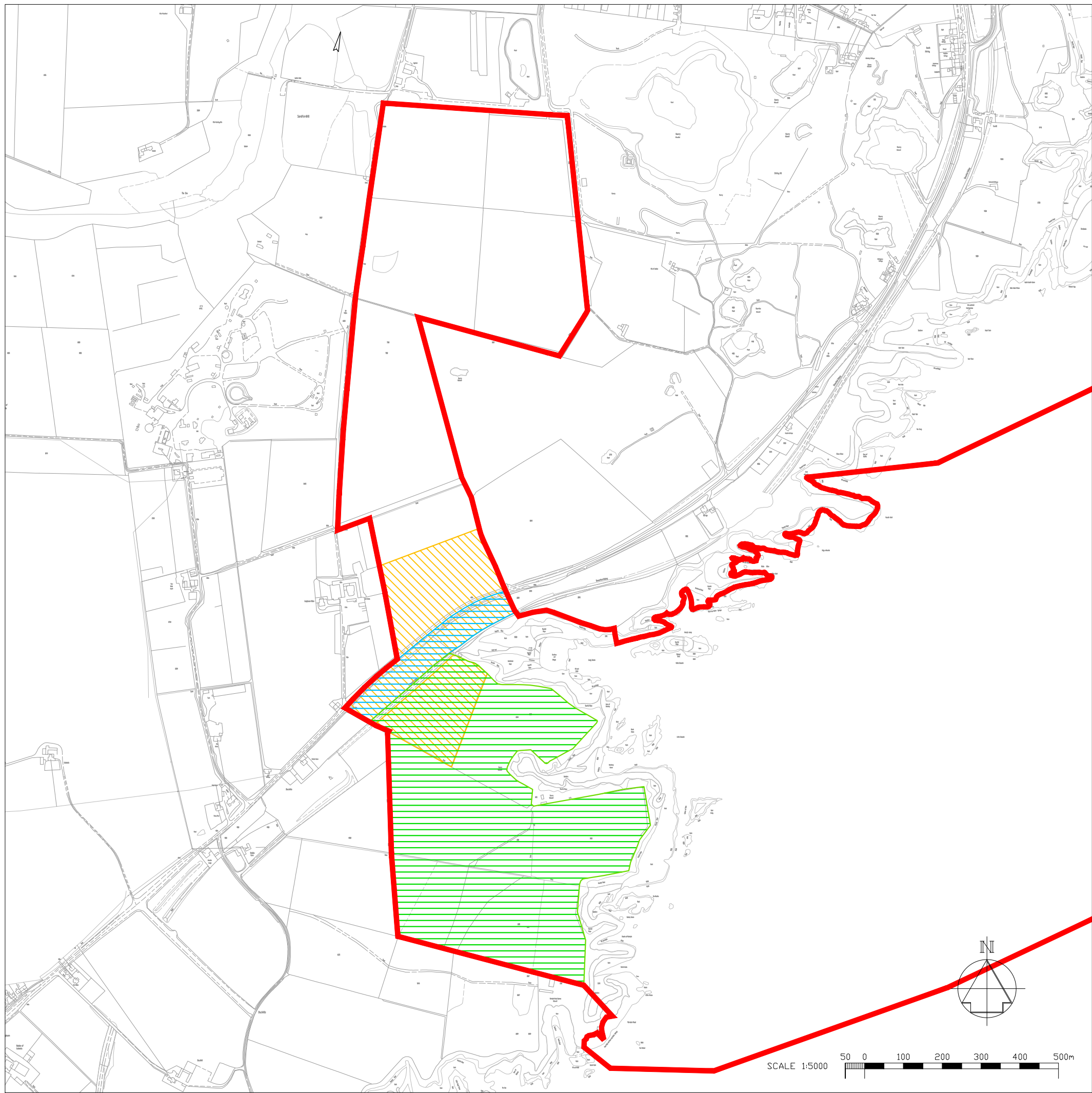
Drawing Status:
FOR INFORMATION

eRoom Doc Number:
2016.04.01_NORTHCONNECT_PER_DRA_HVDC_CONSENTING_BOUNDARY_(ONSHORE)_PLAN_3148_A

Title:
HVDC CONSENTING BOUNDARY (ONSHORE) PLAN


Location	Drawing Number 3148	Sht No 1	Rev No A
-----------------	-------------------------------	--------------------	--------------------

© 2016 NorthConnect AS



LEGEND

- Consenting Boundary
- Fibre Optic Utility Building Search Area
- HDD Entry Point, Laydown & Access Road search area
- HDD access road junction search area

**A1**

Registered Office:
NorthConnect KS
Serviceboks 603
Lundsliden
4606 Kristiansand
Norway

Telephone +47 38 60 70 00
Fax +47 38 60 70 01
E-post: post@northconnect.no
www.northconnect.no

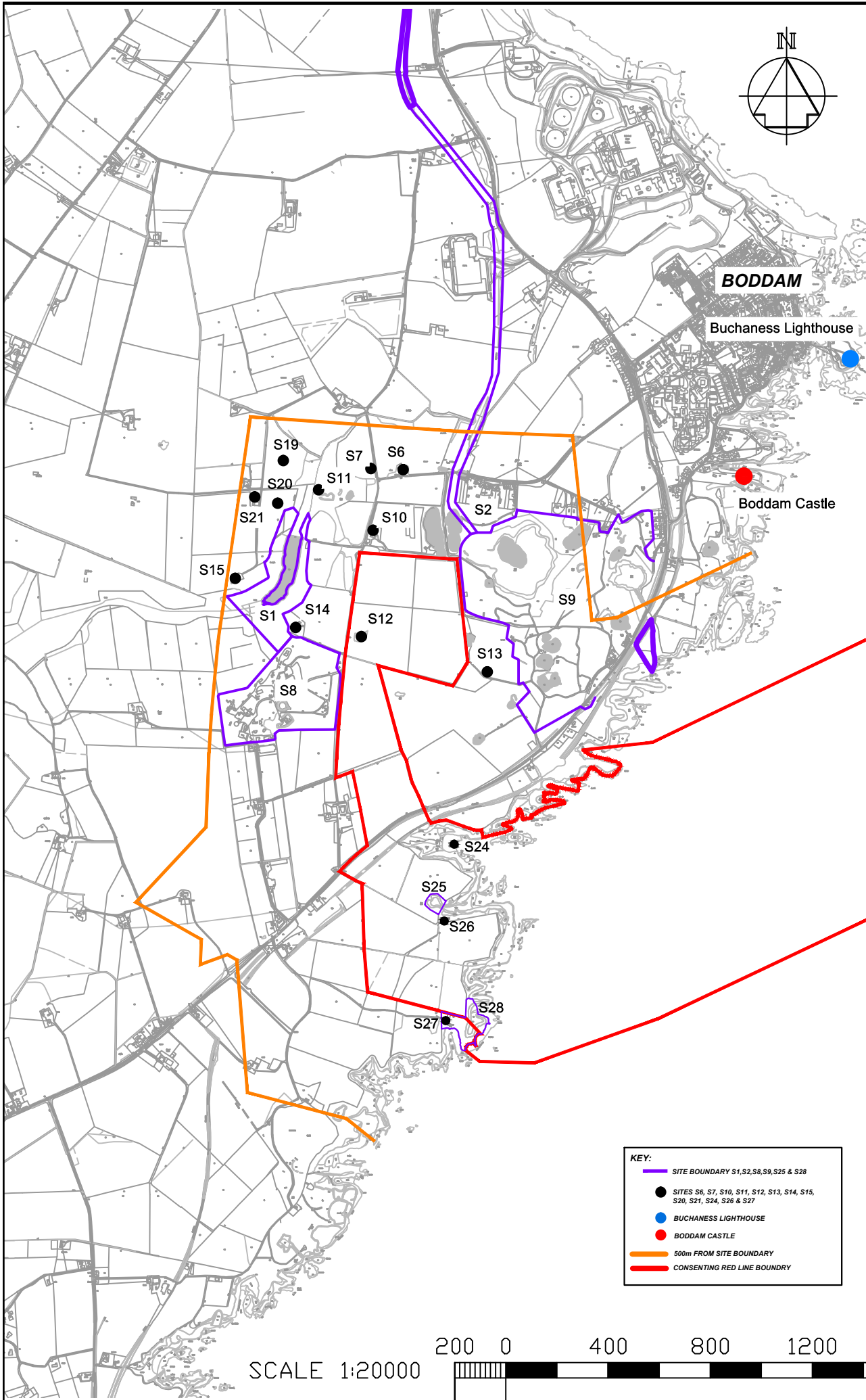
Drawing Status:
FOR INFORMATION

eRoom Doc Number:
2016.04.01_NORTHCONNECT_PER_DRA_HVDC_CONSENTING_BOUNDARY_HDD_ACCESS_HDD_ENTRY_POINT_AND_FIBRE_OPTIC_BUILDING_SEARCH_AREA_3149_A

Title:
HVDC CONSENTING BOUNDARY PLAN, HDD ACCESS, HDD ENTRY POINT AND FIBRE OPTIC BUILDING SEARCH AREA

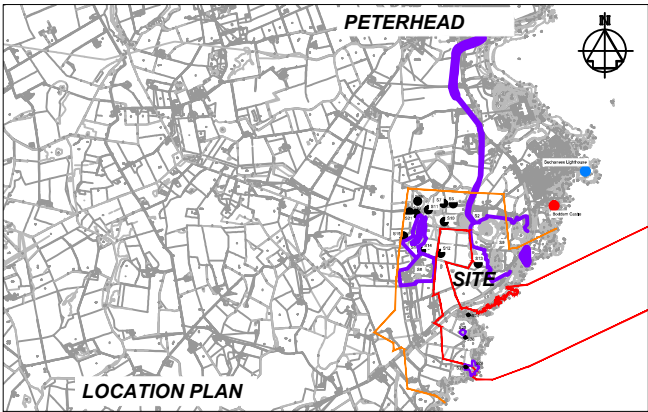
Location	Drawing Number 3149	Sht No 1	Rev No A
-----------------	-------------------------------	--------------------	--------------------


© 2016 NorthConnect AS



S1	Den of Boddam (Flint mining complex)	AMR Index: 6137 Canmore ID: 21303 HER ID: NK14SW0003	Centred On: NK 11470 41350	The remains of a chalk flint deposit, the major source of flint in Scotland, occurs, mainly above the 91m contour, on the ridge of high ground which runs westward for about 10 miles (13.4km) , from the coast between Invermettle (NK 12 44) and Stirling Hill (NK 12 41) to the west of Skelmuir Hill (NJ98 41) and Hill of Dudwick (NJ 97 37) . The flint, yellow in colour, occurs in the form of gravel, pebbles, nodules and boulders. Over 300 'flint pits' (the largest measuring about 7m across by 2m deep) and comparable with those on Skelmuir Hill are plainly visible lying in an irregular line near the top of both edges of a ravine about three-quarters of a mile long. Though the ground has not been cultivated, the edges of the pits are very broken. In one place numerous flakes, fragments and some anvils were found just below the peat.
S2	Den of Boddam	HER ID: NK14SW0061	Centred On: NK 1226 4289	Remains of the emankbments which mark the course of the old railway line built between the quarries at Stirling Hill and the breakwater. An elaborate little railway was built to convey convicts from Peterhead prison to the quarries. The total length of the line was only 2.5 miles, but the whole works were of very elaborate construction. The line contained some large engineering works including a massive granite viaduct of several spans, a steel girder bridge across the road, two masonry over bridges and several cuttings and embankments.
S6	Whinbush	Canmore ID: 21282 HER ID: NK14SW0027	NK 1186 4182	The OS 1st edition 1867 map shows an L-plan and a Z-plan building, each with a small attached rectangular enclosure. By the time of the OS 2nd edition 1888 map the eastern wing of the Z-plan building had been removed leaving an L-plan. The second building has also been altered at its north end; the enclosure formerly on its west side is no longer shown. A new small rectangular building has been added to the south on the opposite side of the track. All of the buildings are depicted as disused on current OS maps.
S7	Whinbush	HER ID: NK14SW0028	NK 1170 4178	Remains of a building, depicted on the 2nd edition OS map.
S8	Stirling Hill	Canmore ID: 81603 HER ID: NK14SW0021	NK 1120 4085	Radar site, established during World War II. After the war it was developed as part of the overhaul and improvement of the UK's air defences under codename ROTOR. At the beginning of that period it was a Ground Control Intercept Station, but in 1952 construction began on a standard underground 'R3' type operations block; it became operational in August 1953. It is still in use by the MOD. There was also a Royal Observer Post operated here during WWII.
S9	Stirling Hill	Canmore ID: 81603 HER ID: NK14SW0021	NK 1249 4125	The remains of Stirling Hill quarries lie c.2 miles south of Peterhead. Although in use by 1867 the construction of a large breakwater was begun by the Admiralty across Peterhead Bay to convert it into an all-weather harbour in 1884. The granite used in the concrete was excavated from the quarries at Stirling Hill by convict labour from Peterhead Prison. A small railway (NK14SW0061) was constructed to convey the convicts to and from the quarry and the granite to the breakwater. A number of smithies are visible on the OS maps 1867 and 1888 but only the remains of a few survive now. Site visit September 2014 recorded a number of surviving features including at least three magazines, with granite walls and concrete roofs; and a smithy. Two cottages next to the road at NK127411 may have been for quarry workers. Within the convict fenced area are foundations for a crane and an open fronted building, possibly for masons' bankers.
S10	Sandford Hill	Canmore ID: 143817 HER ID: NK14SW0030	NK 1158 4155	Site of a farmstead. The OS 1st edition 1867 map shows a long range with a smaller rectangular building to the south. Part of the eastern end of the range appears to have been removed by the time of the OS 2nd edition 1888 map, which also shows an enclosure attached on its south side. Current OS maps show that both buildings have since been removed, although a new dwelling has been built to the north.

S11	Sandford Hill	Canmore ID: 143817 HER ID: NK14SW0029	NK 1164 4155	Remains of a building. An L-shaped building with a small attached enclosure to its west, and two small enclosures to its east, are depicted on the OS map of 1867. By the 1888 edition only the L-shaped building with an attached enclosure to its NW is depicted. This ruined building is situated on a moderate N-facing slope in agricultural ground at an altitude of about 80m OD.
S12	Sandford Hill	HER ID: NK14SW0069	NK 1171 4117	Site of a farmstead depicted on OS 1st and 2nd edition OS maps, which show two rectangular buildings with a small enclosure to the S.
S13	Hill of Boddam	HER ID: NK14SW0032	NK 1219 4105	A small farmstead is depicted on the OS map of 1867 as a long range with a small extension to the west at its southern end. To the west is a house with attached garden enclosure. By the 1888 edition the small extension has gone but the rest remains as it is today, although the garden enclosure is no longer evident.
S14	Denend	Canmore ID: 143818 HER ID: NK14SW0031	NK 1145 4122	Remains of three buildings. They are depicted on the OS maps of 1867 and 1888.
S15	The Den	HER ID: NK14SW0026	NK 1137 4163	A single building with attached enclosure to the south is depicted on the OS map of 1867. By 1888 only the building is depicted. Today the building with small alterations stands within an enclosure.
S19	Denside Sandfordhill	Canmore ID: 156551	NK 1137 4163	A farmstead, comprising one roofed long building and one unroofed building is depicted on the 1st edition of the OS 6-inch map (Aberdeenshire 1872, sheet xxxii) , but it is not shown on the current edition of the OS 1:10000 map (1990)
S20	Denside Sandfordhill	NA	NA	Small square building on depicted on the OS 1st edition of the OS 6-inch map (Aberdeenshire 1872, sheet xxxii). Not depicted on the OS 2nd edition 6-inch map (Aberdeenshire 1872, sheet xxxii) or current mapping.
S21	Denside	HER ID: NK14SW0025	NK 1130 4170	Two buildings with an attached enclosure are depicted on the 2nd edition OS map of 1888 but not on the earlier 1867 edition. They are still in use today.
S24	Long Haven	HER ID: NK14SW0044	NK1208 4037	Shipwreck. During WW11 a boat carrying iron ore was run aground here deliberately after a bomb attack in order to save the cargo.
S25	Longhaven Quarry	HER ID: NK14SW0015	Centered On: NK1200 4013	Disused quarry. Distinctive Peterhead pink granite was quarried here for monumental and building purposes. The quarry was closed but subsequently re-opened c.1986 on a small scale, using a non-explosive carbon dioxide blasting method to extract the granite. Now disused and water filled.
S26	Heathery Haven, Salmon House	Canmore ID: 75962	NK1204 4007	The remains of a salmon house are situated at the head of the cliffs overlooking Heathery Haven. It is depicted as roofed (and noted as a 'Salmon house') on the first edition of the OS 6-inch map (Aberdeenshire, 1872, sheet 32) , which also shows a path dropping down to the beach below.
S27	Murdoch Head, Smithy	Canmore ID: 75946	NK1204 3967	This smithy, now reduced to its footings but depicted as roofed on the first edition of the OS 6-Inch map (Aberdeenshire, 1872, sheet 32) , is situated in the angle between two enclosed fields due west of Murdoch Head.
S28	Murdoch Head, Quarry	HER ID: NK13NW0033	Centered on: NK1212 3966	Remains of a granite quarry depicted on historic OS maps. The 1st edition shows the quarry with smithy to the west. By the time of the 2nd edition the quarry had been significantly enlarged and another two small buildings are shown between the quarry and smithy. Current maps show the remains of the smithy.





A3

Registered Office:
NorthConnect KS
Serviceboks 603
Lundsiden
4606 Kristiansand
Norway

Telephone +47 38 60 70 00
Fax +47 38 60 70 01
E-post: post@northconnect.no
www.northconnect.no

Drawing Status:

Room Doc Number:
2016.4.4_Northconnect_PER_DRA_Archaeological and Cultural Heritage
Sites within Archaeology Study Area_3150_A

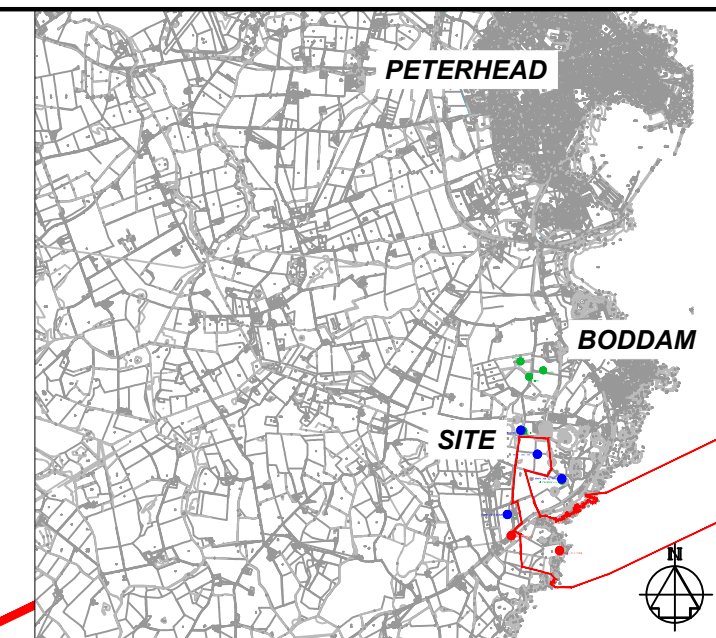
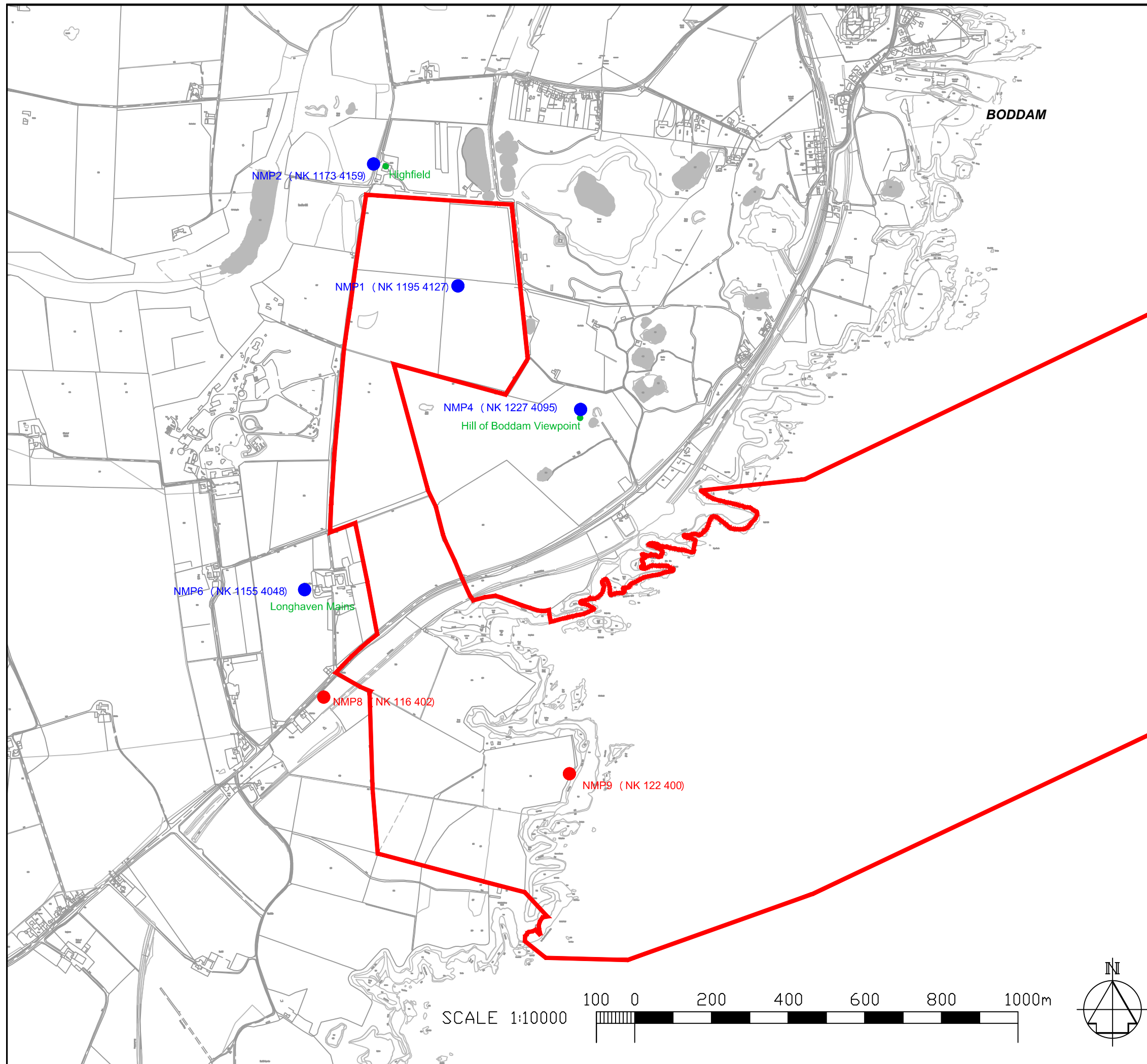
Title:
ARCHAEOLOGY STUDY AREA

Location

Drawing Number
3150


Sht No

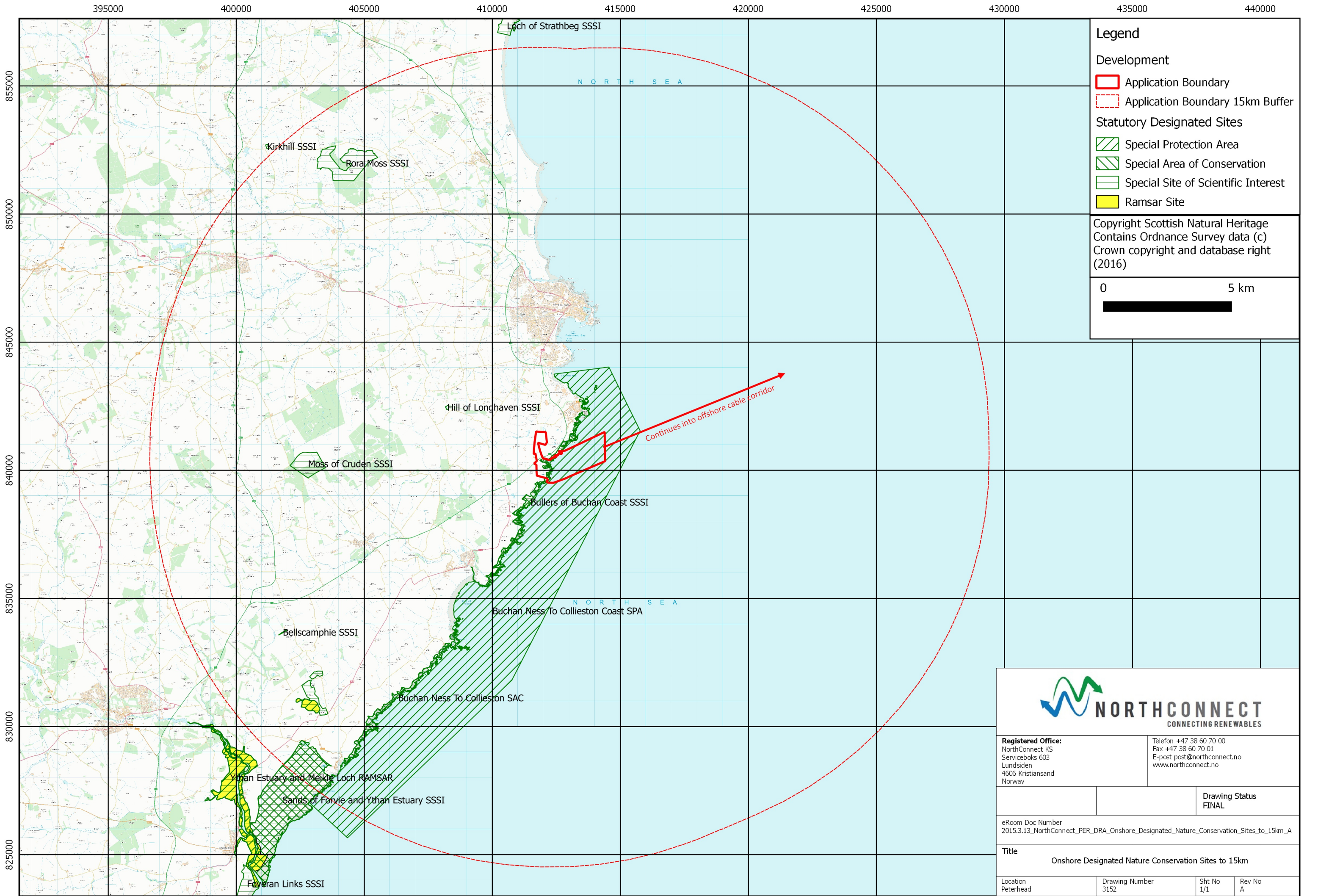
Rev No
A



LOCATION PLAN

- Noise Monitoring Point (2014)
- Proposed New Noise Monitoring Point (2016)
- HVDC Consenting Boundary

 NORTHCONNECT CONNECTING TO RENEWABLES		A3	
Registered Office: NorthConnect KS Serviceboks 603 Lundsiden 4606 Kristiansand Norway		Telefon +47 38 60 70 00 Fax +47 38 60 70 01 E-post: post@northconnect.no www.northconnect.no	
		Drawing Status: Preliminary	
eRoom Doc Number: 2016.4.4_Northconnect_PER_DRA_Noise Monitoring Points_3151_A			
Title: NOISE MONITORING POINTS			
Location	Drawing Number 3151	Sht No	Rev No A



Legend

Development

Application Boundary

Application Boundary 15km Buffer

Statutory Designated Sites

Special Protection Area

Special Area of Conservation

Special Site of Scientific Interest

Ramsar Site


Copyright Scottish Natural Heritage

Contains Ordnance Survey data (c)

Crown copyright and database right (2016)

0

5 km

**NORTHCONNECT**
CONNECTING RENEWABLES

Registered Office:
NorthConnect KS
Serviceboks 603
Lundsiden
4606 Kristiansand
Norway

Telefon +47 38 60 70 00
Fax +47 38 60 70 01
E-post post@northconnect.no
www.northconnect.no

Drawing Status
FINAL

eRoom Doc Number
2015.3.13_NorthConnect_PER_DRA_Onshore_Designated_Nature_Conservation_Sites_to_15km_A

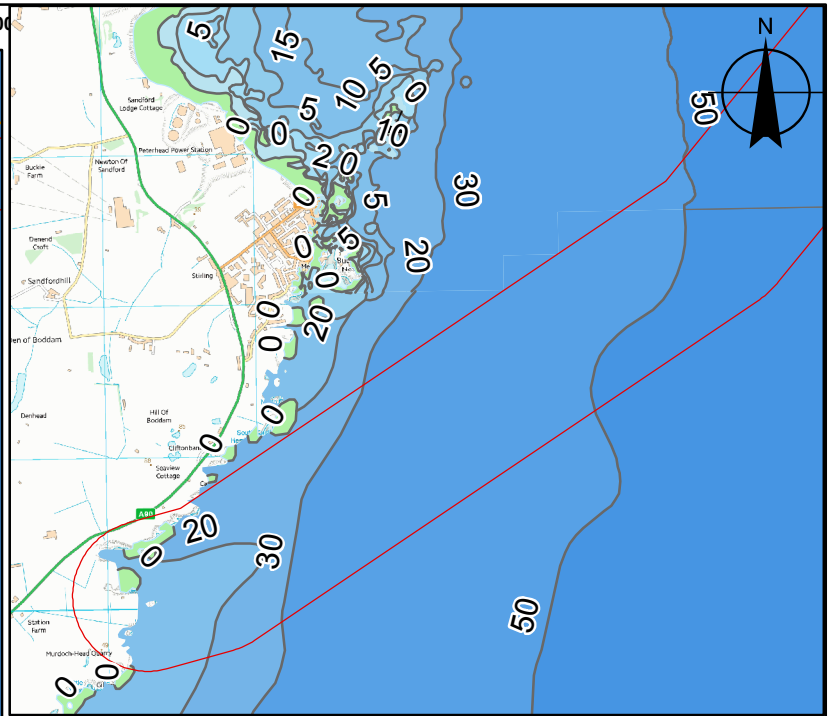
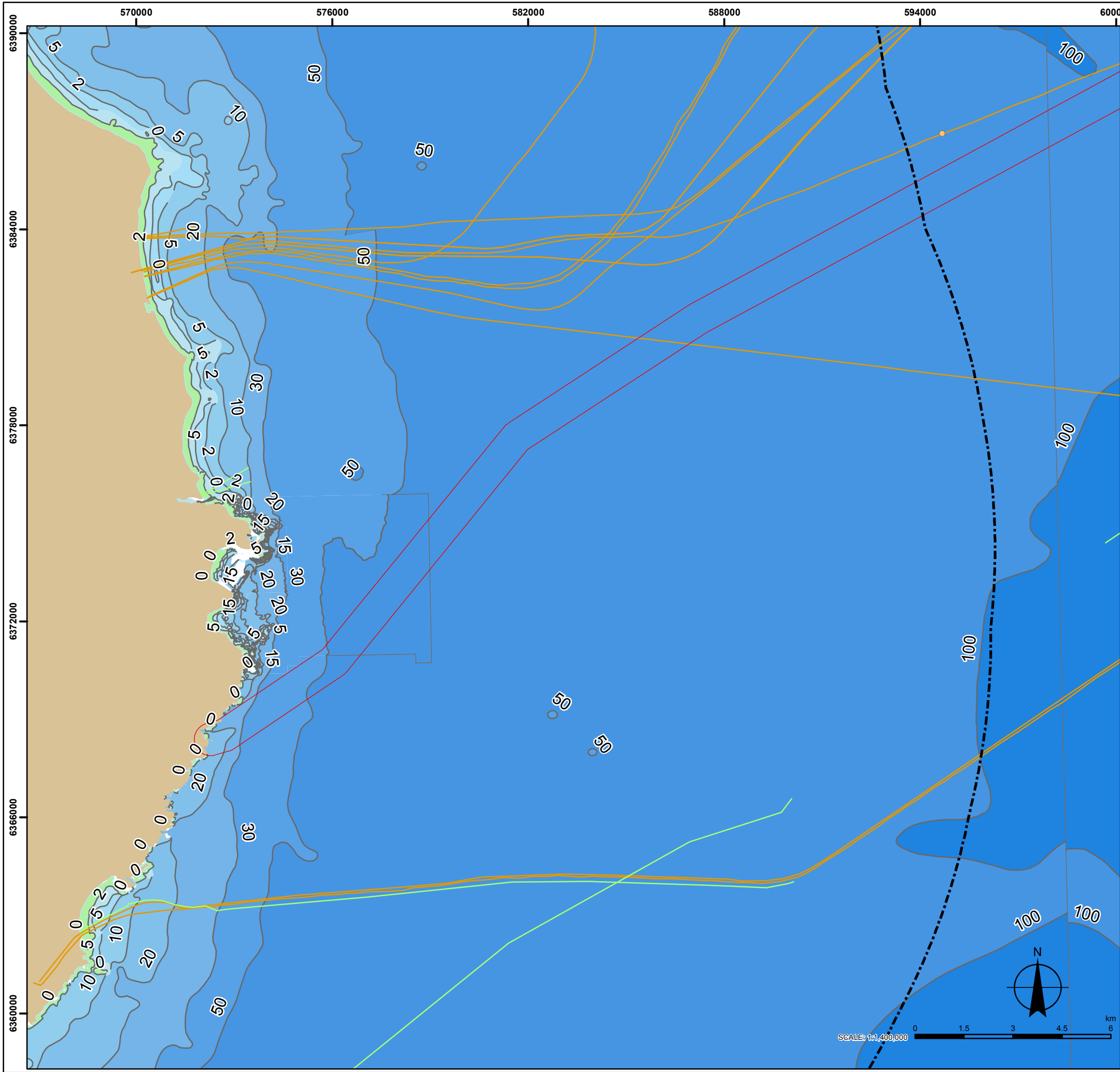
Title
Onshore Designated Nature Conservation Sites to 15km

Location
Peterhead

Drawing Number
3152

Sht No
1/1

Rev No
A



LOCATION PLAN

LEGEND

- Scottish Territorial Waters (12 nm)
- Preferred cable route corridor
- UK/Norway Median Line

Existing infrastructure

- Subsurface oil and gas infrastructure
- Plugged and abandoned wells
- Pipelines
- Cables



A3

Registered office:
NorthConnect KS
Servicebooks 603
Lundston
4608 Kristiansand
Norway

Phone +47 38 60 70 00
Fax +47 38 60 70 01
E.post: post@northconnect.no
www.northconnect.no

SOURCE:
© SeaZone Solutions Limited, 2016 (L042016.0004)
OceanMap 2016
UKoilandgasdata
Reproduced from Ordnance Survey digital map data

PROJECTION: WGS 1984 UTM Zone 30N

eRoom Doc Number:

2016.04.21_Northconnect_TEC_DRA_STWbathyinfrs_3400_A

Title:

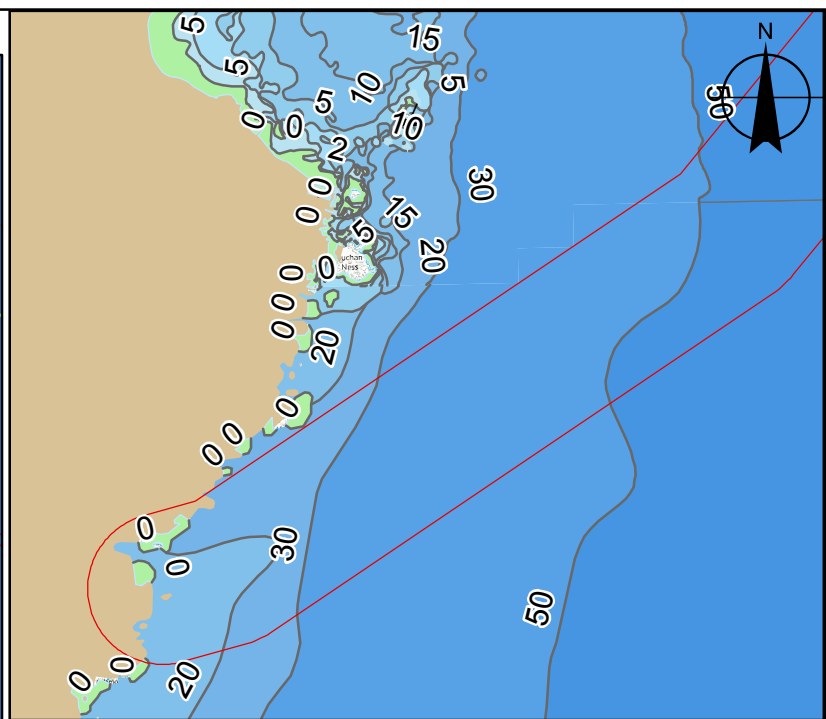
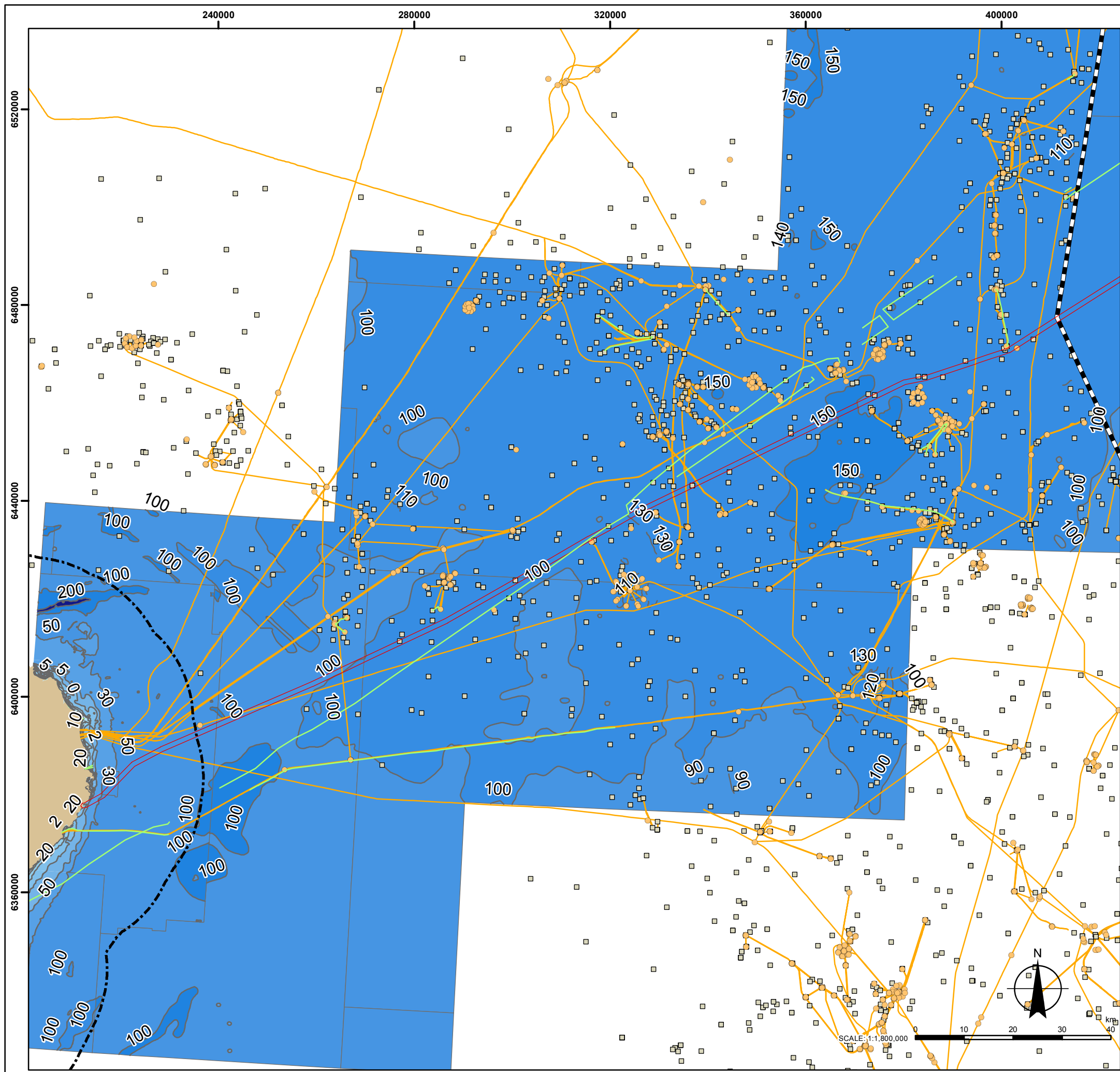
Bathymetry and existing infrastructure out to the Scottish
Territorial Waters (12 nm)

Location

Drawing Number
3400

Sht No
1

Rev No
A




LOCATION PLAN

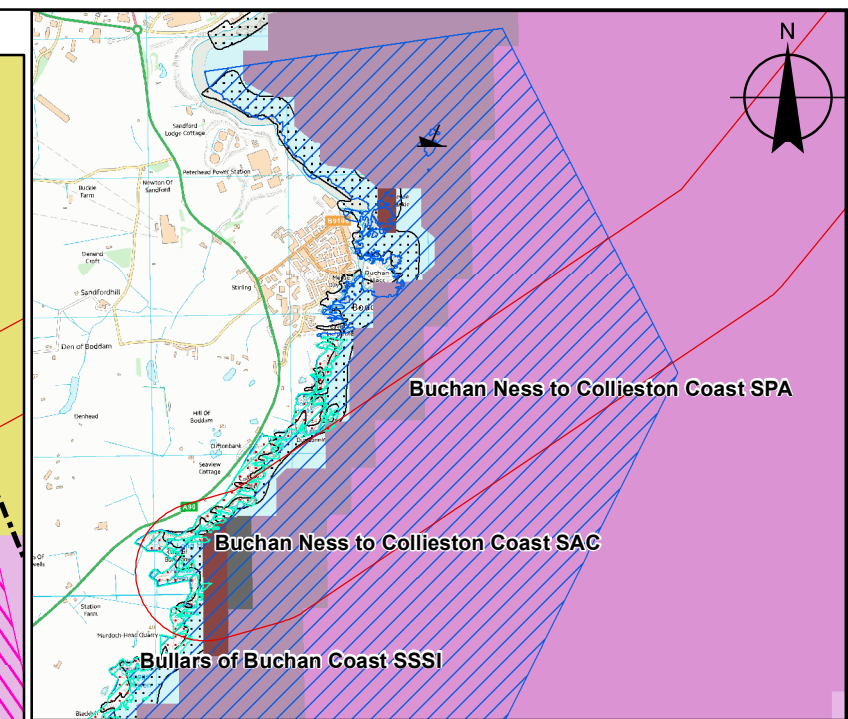
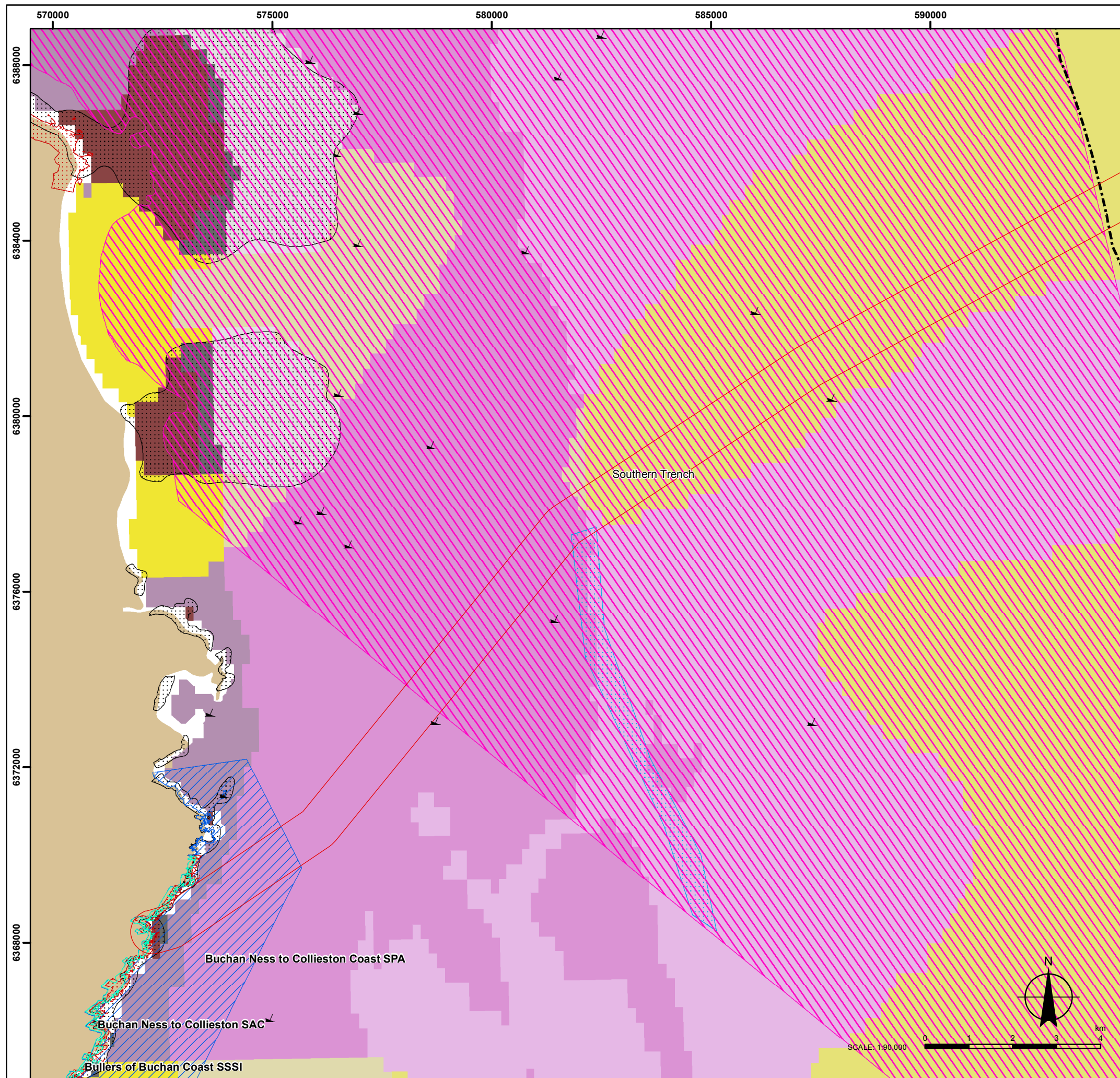
LEGEND

- Scottish Territorial Waters (12 nm)
- Preferred cable route corridor
- UK/Norway Median Line

Existing infrastructure

- Subsurface oil and gas infrastructure
- Plugged and abandoned wells
- Pipelines
- Cables

<div><div>NORTHCONNECT</div><div>CONNECTING RENEWABLES</div></div>				A3			
<div>Registered office: NorthConnect KS Serviceboks 603 Lundsten 4608 Kristiansand Norway</div>		<div>Telefon +47 38 60 70 00 Fax +47 38 60 70 01 E-post: post@northconnect.no www.northconnect.no</div>					
<div>SOURCE: © SeaZone Solutions Limited, 2016 [L042016.0004] UKnavigationsdata OceanMapper, 2016 Reproduced from Ordnance Survey digital map data</div>		<div>PROJECTION: WGS 1984 UTM Zone 31N</div>					
<div>eRoom Doc Number: 2016.04.21_Northconnect_TEC_DRA_MLbathyinfras_3401_A</div>							
<div>Title: Bathymetry and existing infrastructure out to the median line</div>							
Location	Drawing Number 3401	Sht No 1	Rev No A				



LOCATION PLAN

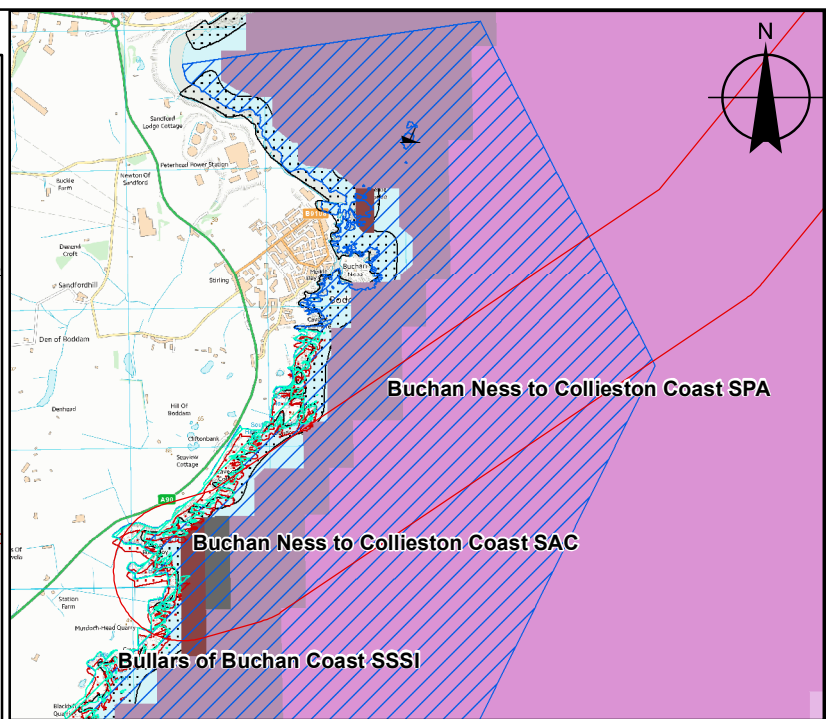
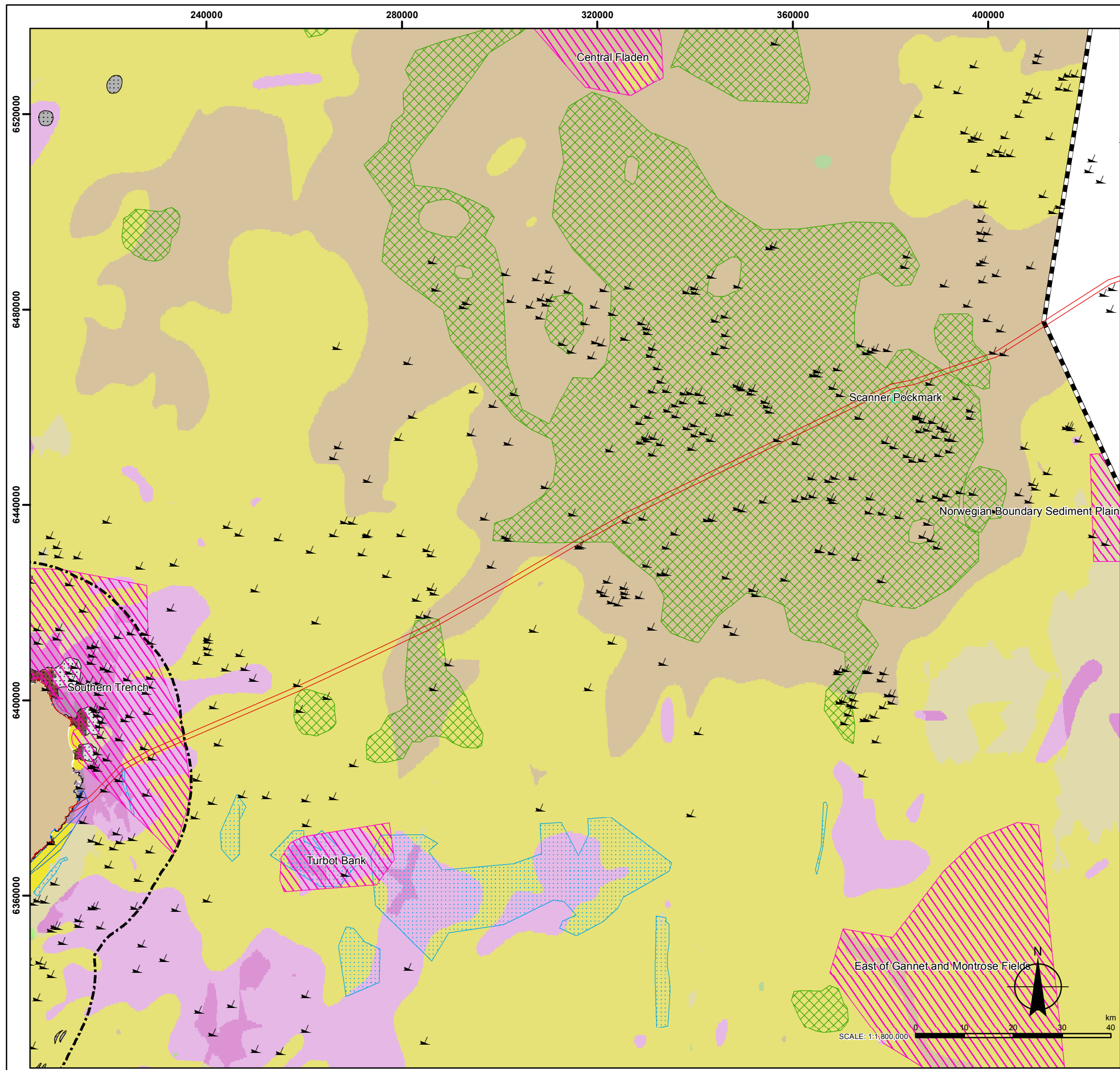
LEGEND

- Preferred cable route corridor
- Scottish Territorial Waters (12 nm)
- UK/Norway Median Line
- Designated sites**
 - Marine Protected Area (MPA)
 - Special Area of Conservation (SAC)
 - Special Protection Areas (SPA)
 - Site of Special Scientific Interest (SSSI)
- Potential Annex I habitat**
 - Fluid seeps
 - Reef
 - Not reef (sandeel grounds)
 - Wrecks
- UK SeaMap predicted habitat**
 - A3.1: Atlantic and Mediterranean high energy infralittoral rock
 - A3.2: Atlantic and Mediterranean moderate energy infralittoral rock
 - A4.2: Atlantic and Mediterranean moderate energy circalittoral rock
 - A5.13: Infralittoral coarse sediment
 - A5.14: Circalittoral coarse sediment
 - A5.15: Deep circalittoral coarse sediment
 - A5.23: Infralittoral fine sand or A5.24: Infralittoral muddy sand
 - A5.25: Circalittoral fine sand or A5.26: Circalittoral muddy sand
 - A5.27: Deep circalittoral sand



A3

Registered office: NorthConnect KS Serviceboats 603 Lundsden 4606 Kristiansand Norway		Telefon +47 38 60 70 00 Fax +47 38 60 70 01 E post: post@northconnect.no www.northconnect.no	
SOURCE: © SeaZone Solutions Limited, 2016 (L042016.0004) JNCC, SINH Reproduced from Ordnance Survey digital map data		PROJECTION: WGS 1984 UTM Zone 30N	
eRoom Doc Number: 2016.04.21_Northconnect_TEC_DRA_SWTdesignhab_3402_A			
Title: Designated sites and habitat mapping out to Scottish Territorial Waters (12 nm)			
Location	Drawing Number	Sht No	Rev No



LOCATION PLAN

LEGEND

- Preferred cable route corridor
- Scottish Territorial Waters (12 nm)
- UK/Norway Median Line

Designated sites

- Marine Protected Area (MPA)
- Site of Special Scientific Interest (SSSI)
- Special Area of Conservation (SAC)
- Special Protection Areas (SPA)

Potential Annex I habitat

- Fluid seeps
- Reef
- Not reef (sandeel grounds)
- Wrecks

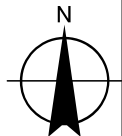
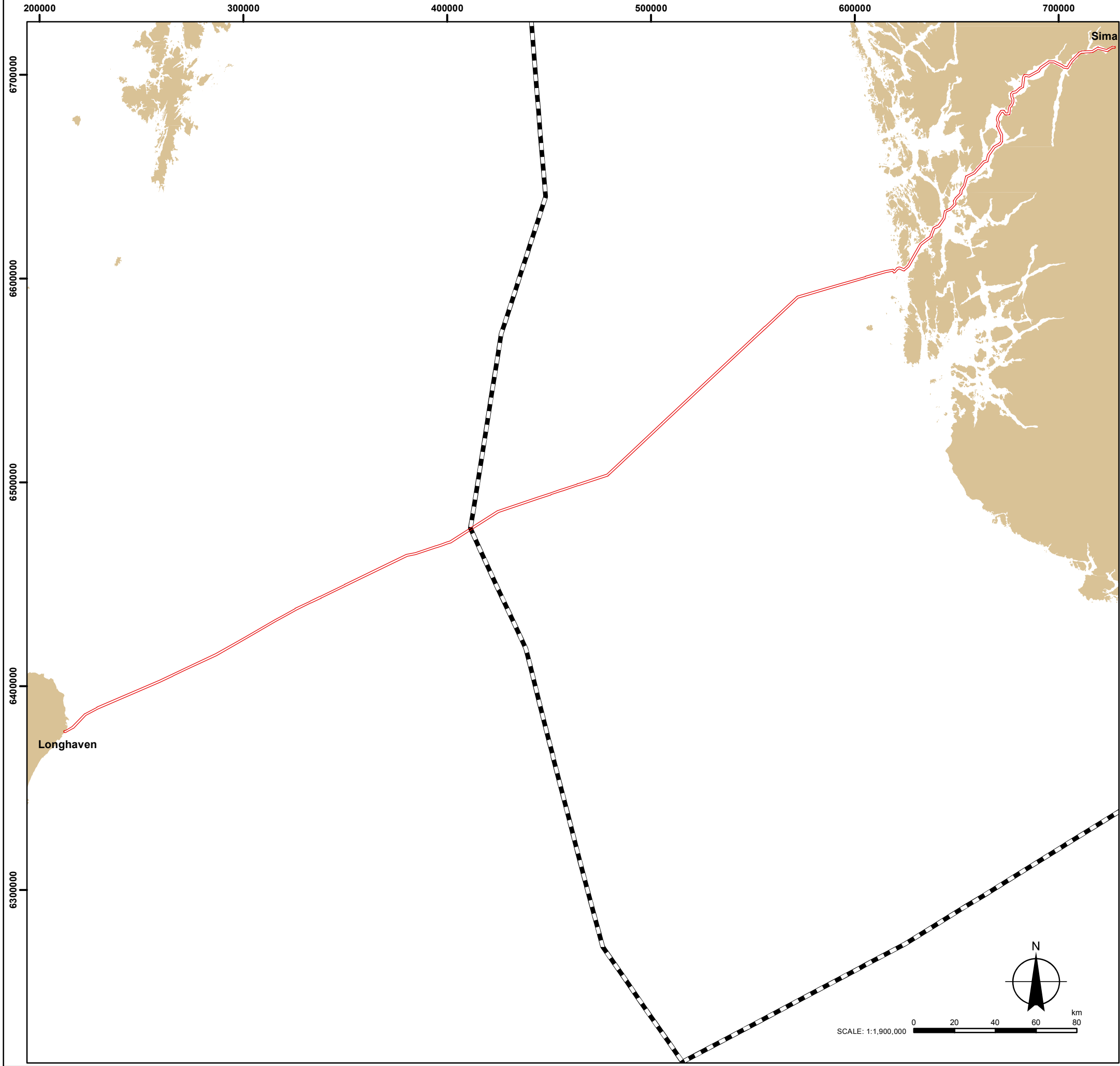
UK SeaMap predicted habitat

- A3.1: Atlantic and Mediterranean high energy infralittoral rock
- A3.2: Atlantic and Mediterranean moderate energy infralittoral rock
- A4.11: Very tide-swept faunal communities on circalittoral rock or A4.13: Mixed faunal turf communities on circalittoral rock
- A4.2: Atlantic and Mediterranean moderate energy circalittoral rock
- A4.27: Faunal communities on deep moderate energy circalittoral rock
- A5.13: Infralittoral coarse sediment
- A5.14: Circalittoral coarse sediment
- A5.15: Deep circalittoral coarse sediment
- A5.23: Infralittoral fine sand or A5.24: Infralittoral muddy sand
- A5.25: Circalittoral fine sand or A5.26: Circalittoral muddy sand
- A5.27: Deep circalittoral sand
- A5.37: Deep circalittoral mud
- A5.44: Circalittoral mixed sediments
- A5.45: Deep circalittoral mixed sediments
- Atlantic Slope sand and muddy sand
- Atlantic Slope mud and sandy mud




A3

Registered office: NorthConnect KS Servicebooks 603 Lundstien 4606 Kristiansand Norway		Tel: +47 38 60 70 00 Fax: +47 38 60 70 01 E-post: pos@northconnect.no www.northconnect.no	
SOURCE: © SeaZone Solutions Limited, 2016 [L042016.0004] JNCC, SNH Reproduced from Ordnance Survey digital map data		PROJECTION: WGS 1984 UTM Zone 31N	
eRoom Doc Number: 2016.04.21_Northconnect_TEC_DRA_MLdesignhab_3403_A			
Title: Designated sites and habitat mapping out to the median line			
Location	Drawing Number 3403	Sht No 1	Rev No A



LOCATION PLAN

- LEGEND
- Preferred cable route corridor
 - Median Line

<div><div>NORTHCONNECT CONNECTING RENEWABLES</div></div> <div>A3</div>			
Registered office: NorthConnect KS Serviceboks 603 Lundsten 4606 Kristiansand Norway		Telefon +47 38 60 70 00 Fax +47 38 60 70 01 E-post: post@northconnect.no www.northconnect.no	
SOURCE: UKHO all rights reserved		PROJECTION: WGS 1984 UTM Zone 31N	
eRoom Doc Number: 2016.04.19_Northconnect_TEC_DRA_Overview_3404_A			
Title: Route overview from Loghaven to Sima			
Location	Drawing Number 3404	Sht No 1	Rev No A