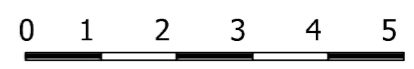


# Orbital O2 Tidal Turbine

## Legend

Installation works maximum extent



Scale: 1:100,000 @ A3

Projection WGS84 UTM 30N

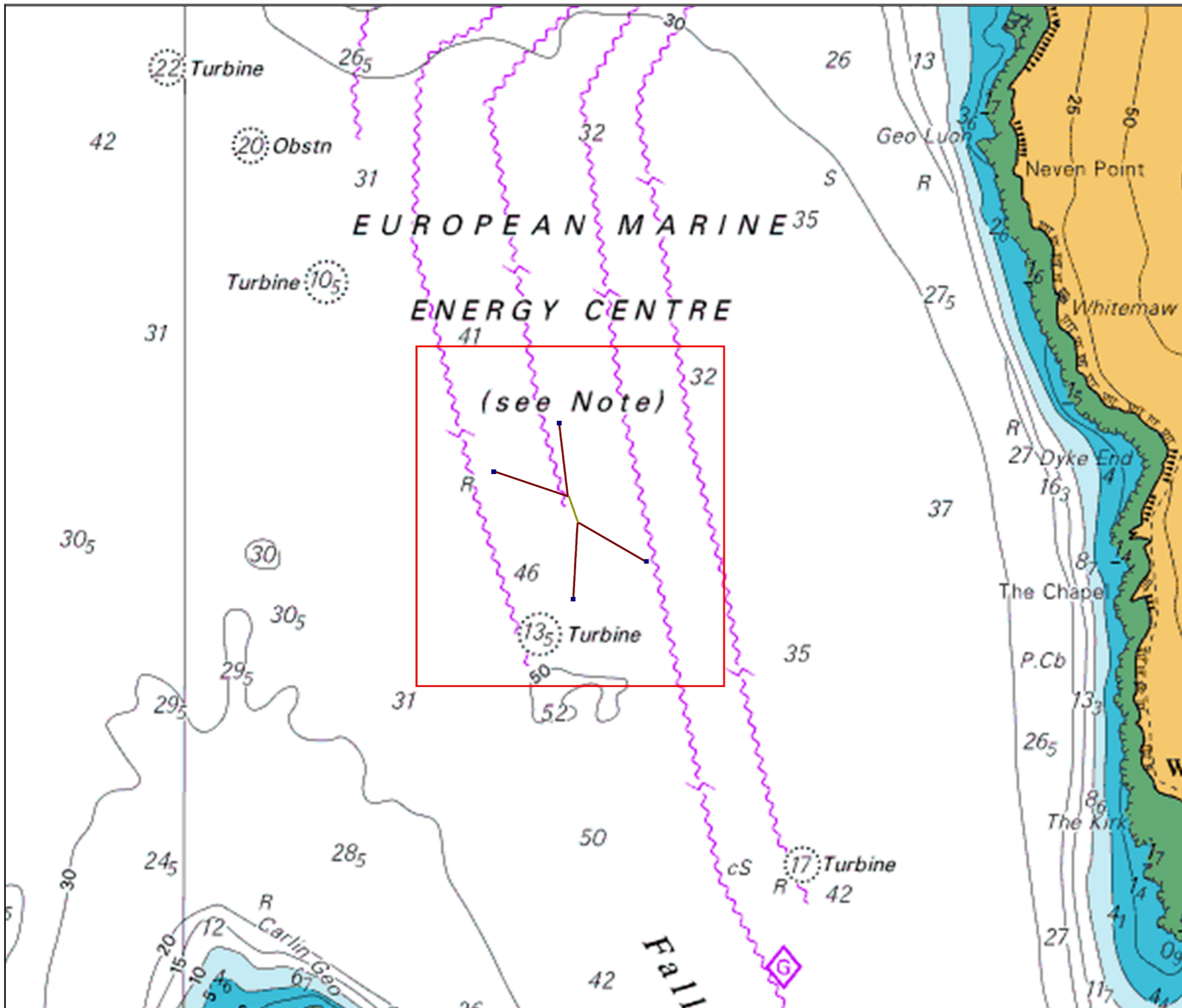


Figure 1. Site Location Plan

Date: 121018 [Redacted]

Drawing No: SR22\_002b

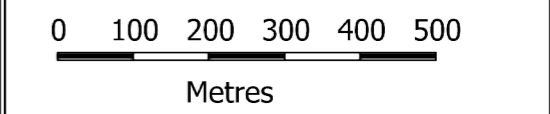




# Orbital O2 Tidal Turbine

- Legend**
- Installation works maximum extent
  - Orbital O2 turbine
  - Mooring line
  - Anchor (orientation may vary)

Element	Latitude (WGS84)	Longitude (WGS84)
NW Anchor	N 59 8.745	W 02 49.165
NE Anchor	N 59 8.810	W 02 48.997
SE Anchor	N 59 8.625	W 02 48.770
SW Anchor	N 59 8.576	W 02 48.958
Cable anchor	N 59 8.697	W 02 48.948
NW works extent	N 59 8.917	W 02 49.374
NE works extent	N 59 8.916	W 02 48.558
SE works extent	N 59 8.453	W 02 48.560
SW works extent	N 59 8.454	W 02 49.376



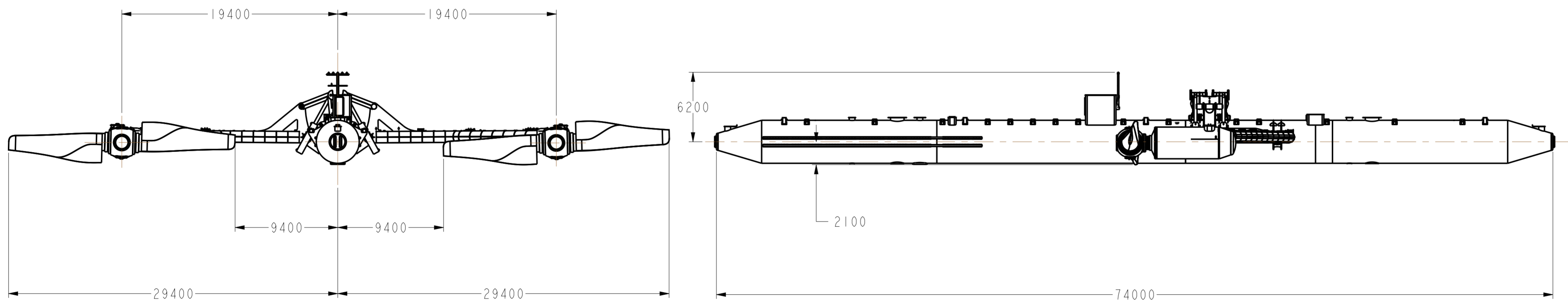
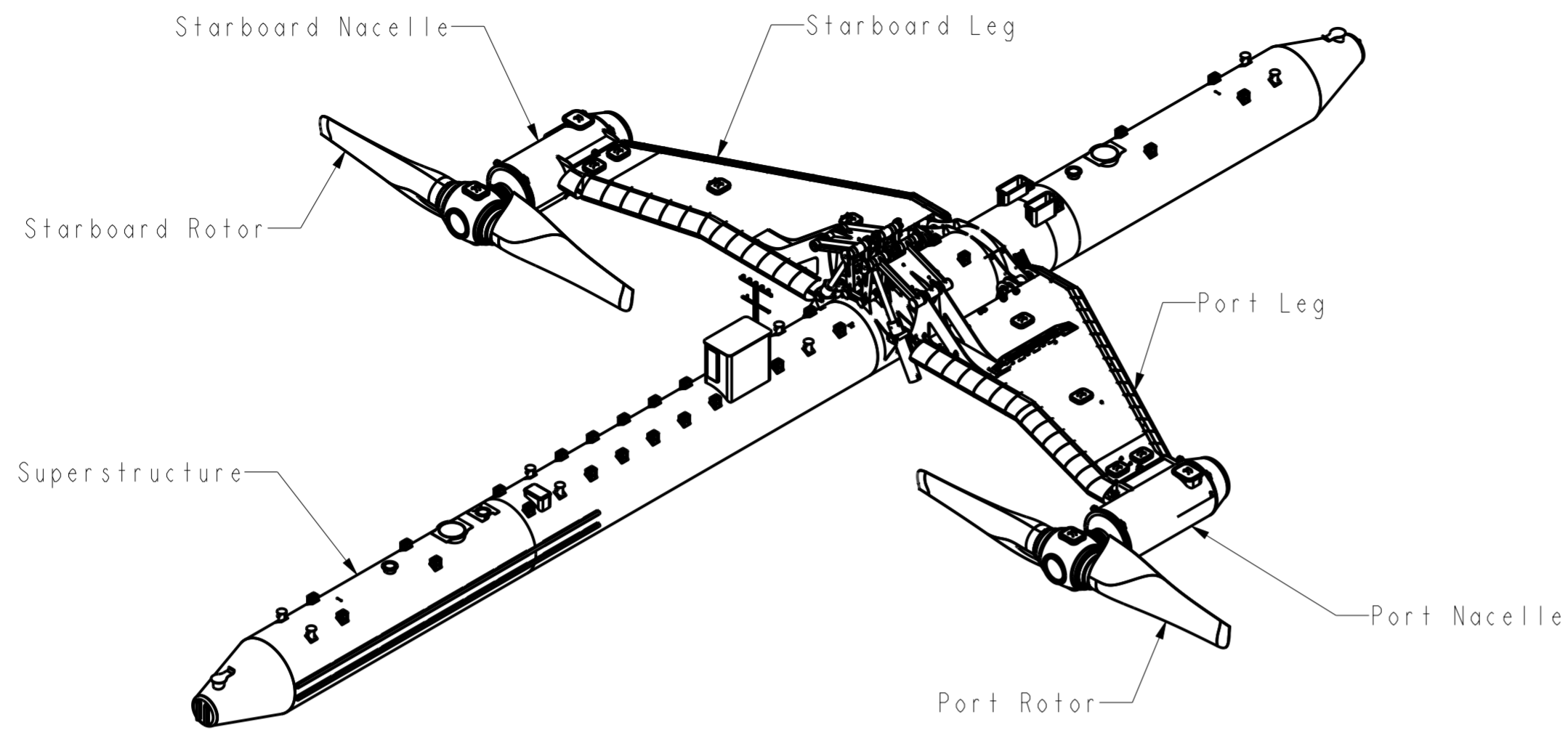
Scale: 1:10,000 @ A3  
 Projection WGS84 UTM 30N

Figure 2. Site layout plan

Date: 121018 | Drawn by: JM  
 Drawing No: SR22\_001b







FABRICATION TOLERANCES										WELD PREPARATIONS			PROJECT TITLE Orbital Marine Power (Orkney) plc	REV.	DATE	REVISION INFO	DRAWN BY	CHK	NOTES	
REQUIRED TOLERANCE UNLESS STATED ON DRAWING										SYMBOL	ANGLE	GAP								
LINEAR DIMENSIONS		TOLERANCE		ANGULAR DIMENSIONS		TOLERANCE		TOLERANCE TYPE		TOLERANCE		X	30°	1MM	DRAWING TITLE General Layout - Legs Up	A	18-Jan-17	Information	AB	
0	TO	500	MM	±	1	MM	0	TO	500	MM	±					2	MM	FLATNESS	1 MM IN	MM
500		3		500	1		ROUNDNESS													
1500		5		1500	0.5		STRAIGHTNESS													
3000		7		3000	0.3		CONCENTRICITY													
6000	AND OVER	10	6000	AND OVER	0.1	PARALLELISM	100	PERPENDICULARITY	100	Proprietary and confidential The information contained in this document is the sole property of Orbital Marine Power Ltd. Any reproduction in part or as a whole, without the written permission of Orbital Marine Power Ltd is prohibited.  PRODUCED IN ProE DO NOT CHANGE MANUALLY NOT TO SCALE UNLESS OTHERWISE STATED	SHEET SIZE A2	COMPONENT	ASSEMBLY							
THIRD ANGLE PROJECTION CONVENTION																			V	30°

Sheet Scale: 0.004  
Sheet 2 of 2