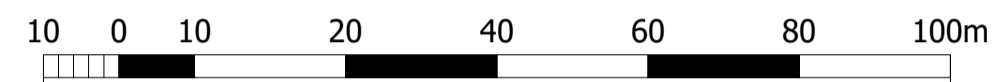


ORKNEY ISLANDS COUNCIL
 ORKNEY LOGISTICS BASE, HATSTON
 OVERALL PAN BOUNDARY

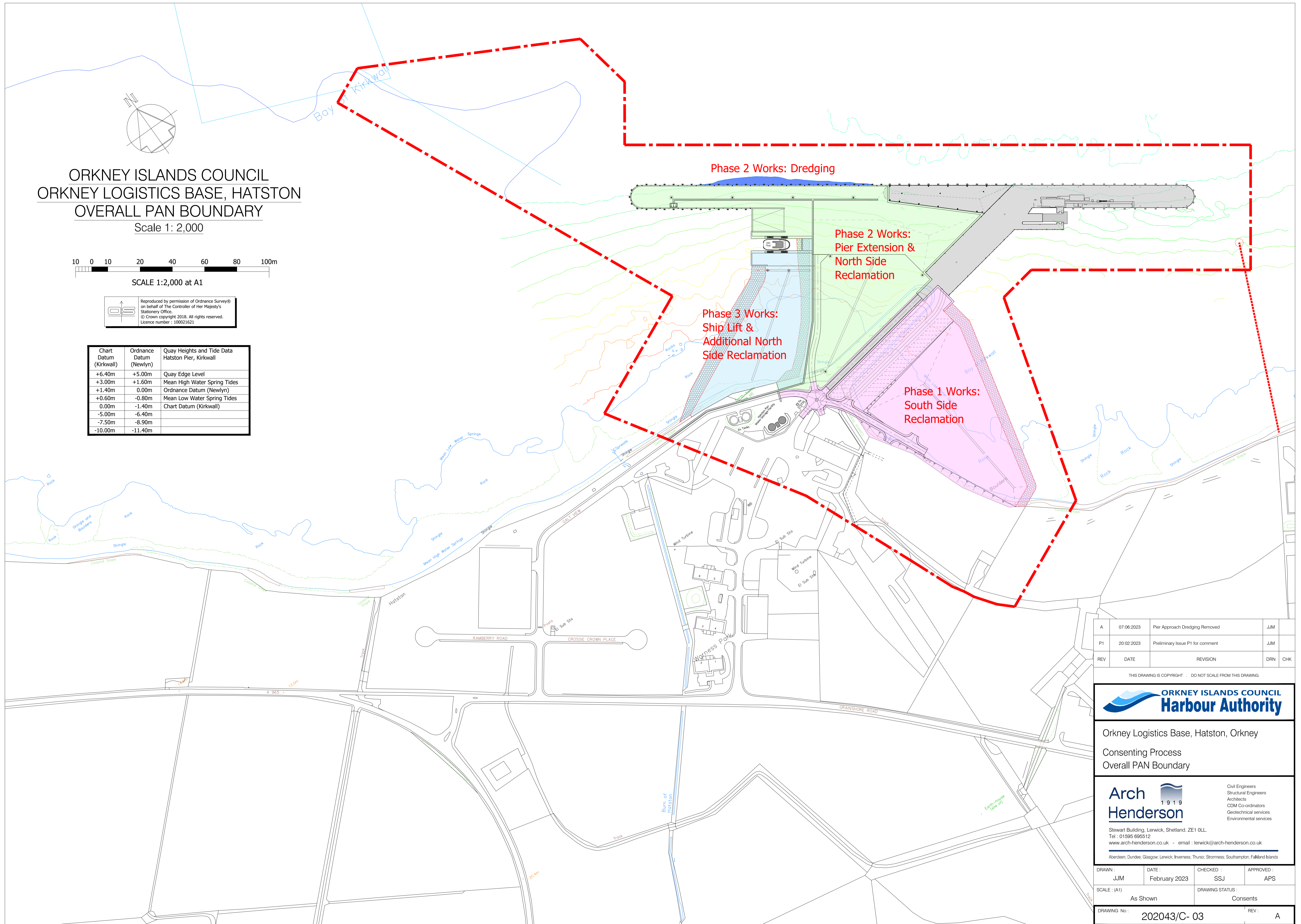
Scale 1: 2,000



SCALE 1:2,000 at A1

Reproduced by permission of Ordnance Survey®
 on behalf of The Controller of Her Majesty's
 Stationery Office.
 © Crown copyright 2018. All rights reserved.
 Licence number : 100021621

Chart Datum (Kirkwall)	Ordnance Datum (Newlyn)	Quay Heights and Tide Data Hatston Pier, Kirkwall
+6.40m	+5.00m	Quay Edge Level
+3.00m	+1.60m	Mean High Water Spring Tides
+1.40m	0.00m	Ordnance Datum (Newlyn)
+0.60m	-0.80m	Mean Low Water Spring Tides
0.00m	-1.40m	Chart Datum (Kirkwall)
-5.00m	-6.40m	
-7.50m	-8.90m	
-10.00m	-11.40m	



REV	DATE	REVISION	DRN	CHK
A	07.06.2023	Pier Approach Dredging Removed	JJM	
P1	20.02.2023	Preliminary Issue P1 for comment	JJM	

THIS DRAWING IS COPYRIGHT . DO NOT SCALE FROM THIS DRAWING.



Orkney Logistics Base, Hatston, Orkney
 Consenting Process
 Overall PAN Boundary

Arch Henderson 1919
 Civil Engineers
 Structural Engineers
 Architects
 CDM Co-ordinators
 Geotechnical services
 Environmental services

Stewart Building, Lerwick, Shetland, ZE1 0LL.
 Tel : 01595 695512
 www.arch-henderson.co.uk - email : lerwick@arch-henderson.co.uk

Aberdeen, Dundee, Glasgow, Lerwick, Inverness, Thurso, Stromness, Southampton, Falkland Islands

DRAWN : JJM	DATE : February 2023	CHECKED : SSJ	APPROVED : APS
SCALE : (A1) As Shown		DRAWING STATUS : Consents	
DRAWING No : 202043/C- 03			REV : A