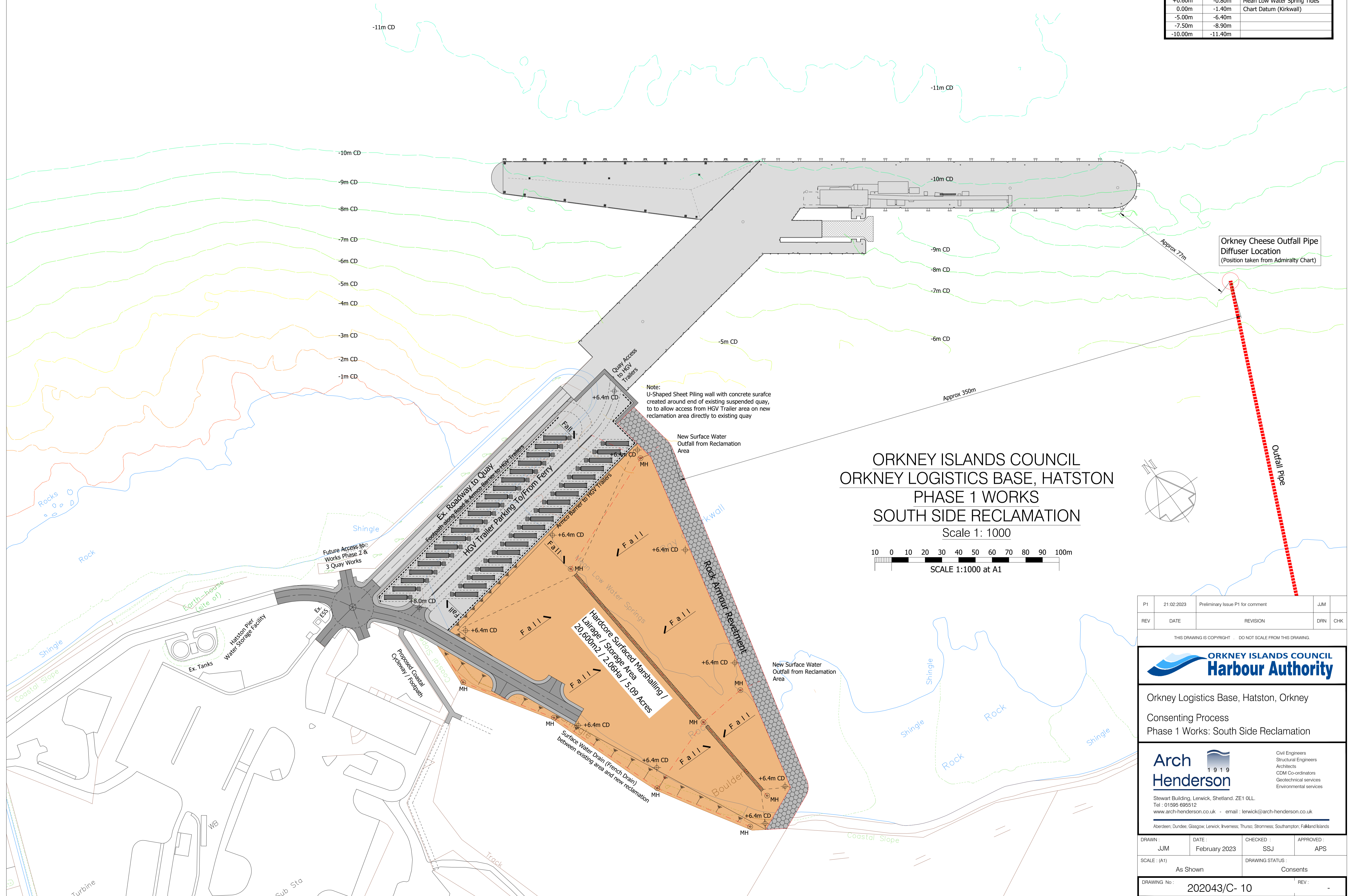
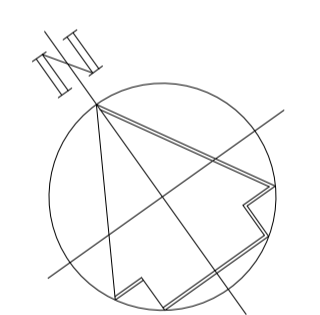
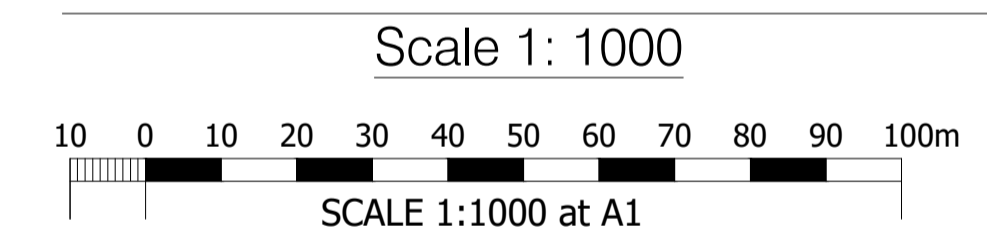


Chart Datum (Kirkwall)	Ordnance Datum (Newlyn)	Quay Heights and Tide Data Hatston Pier, Kirkwall
+6.40m	+5.00m	Quay Edge Level
+3.00m	+1.60m	Mean High Water Spring Tides
+1.40m	0.00m	Ordnance Datum (Newlyn)
+0.60m	-0.80m	Mean Low Water Spring Tides
0.00m	-1.40m	Chart Datum (Kirkwall)
-5.00m	-6.40m	
-7.50m	-8.90m	
-10.00m	-11.40m	



**ORKNEY ISLANDS COUNCIL
 ORKNEY LOGISTICS BASE, HATSTON
 PHASE 1 WORKS
 SOUTH SIDE RECLAMATION**



P1	21.02.2023	Preliminary Issue P1 for comment	JJM
REV	DATE	REVISION	DRN
			CHK

THIS DRAWING IS COPYRIGHT. DO NOT SCALE FROM THIS DRAWING.



Orkney Logistics Base, Hatston, Orkney
 Consenting Process
 Phase 1 Works: South Side Reclamation

Arch Henderson 1919

Civil Engineers
 Structural Engineers
 Architects
 CDM Co-ordinators
 Geotechnical services
 Environmental services

Stewart Building, Lerwick, Shetland, ZE1 0LL.
 Tel: 01595 695512
 www.arch-henderson.co.uk - email: lerwick@arch-henderson.co.uk

Aberdeen, Dundee, Glasgow, Lerwick, Inverness, Thurso, Stromness, Southampton, Falkland Islands

DRAWN:	DATE:	CHECKED:	APPROVED:
JJM	February 2023	SSJ	APS
SCALE: (A1)	As Shown	DRAWING STATUS:	Consents
DRAWING No:	202043/C- 10	REV:	-