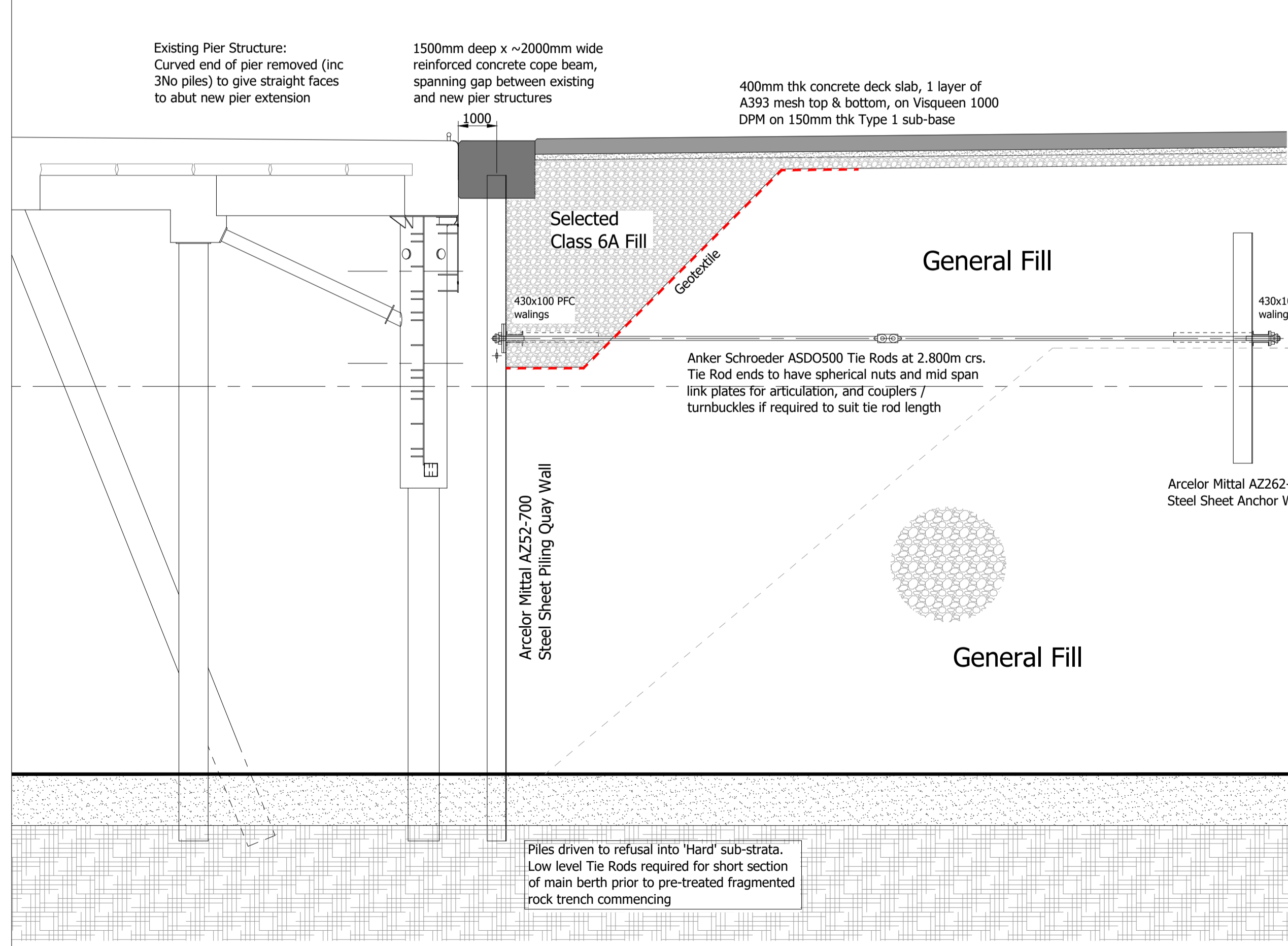
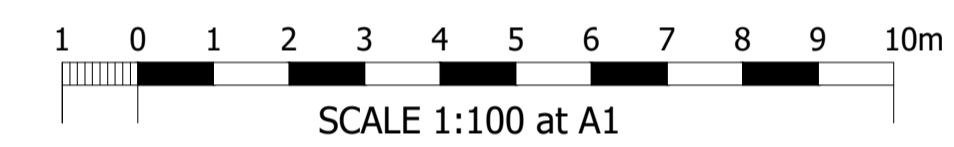
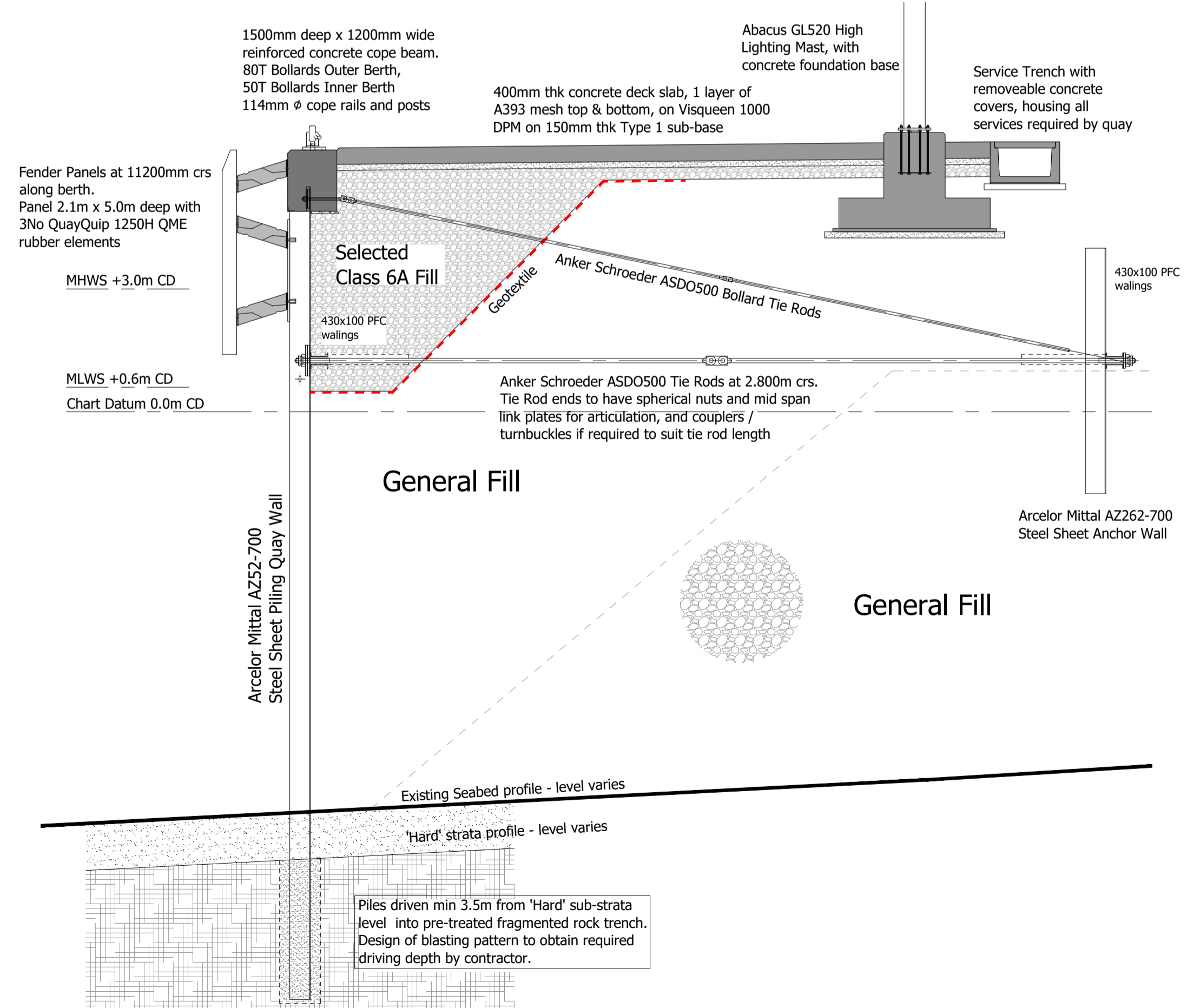


SECTION A-A
(Section Through Finger Pier with Elevation on Fixed ramp)

ORKNEY ISLANDS COUNCIL
ORKNEY LOGISTICS BASE, HATSTON
PHASE 2 WORKS
PIER EXTENSION - TYPICAL CROSS SECTIONS
Scale 1: 100



SECTION C-C
(Section Through New Pier / Existing Pier Junction)



SECTION B-B
(Section Through Main Berth Face near Existing Pier)

Chart Datum (Kirkwall)	Ordnance Datum (Newlyn)	Quay Heights and Tide Data Hatston Pier, Kirkwall
+6.40m	+5.00m	Quay Edge Level
+3.00m	+1.60m	Mean High Water Spring Tides
+1.40m	0.00m	Ordnance Datum (Newlyn)
+0.60m	-0.80m	Mean Low Water Spring Tides
0.00m	-1.40m	Chart Datum (Kirkwall)
-5.00m	-6.40m	
-7.50m	-8.90m	
-10.00m	-11.40m	

P1	DATE	REVISION	DRN	CHK
P1	21.02.2023	Preliminary Issue P1 for comment	JJM	

THIS DRAWING IS COPYRIGHT . DO NOT SCALE FROM THIS DRAWING.

Orkney Logistics Base, Hatston, Orkney
Consenting Process
Phase 2 Works: Pier Cross Sections

Civil Engineers
Structural Engineers
Architects
CDM Co-ordinators
Geotechnical services
Environmental services

Stewart Building, Lerwick, Shetland. ZE1 0LL.
Tel : 01595 695512
www.arch-henderson.co.uk - email : lerwick@arch-henderson.co.uk

Aberdeen, Dundee, Glasgow, Lerwick, Inverness, Thurso, Stromness, Southampton, Falkland Islands

DRAWN	DATE	CHECKED	APPROVED
JJM	February 2023	SSJ	APS

SCALE: (A1)
As Shown

DRAWING STATUS: Consents

DRAWING No: 202043/C- 24