

Klemm KR 709-2

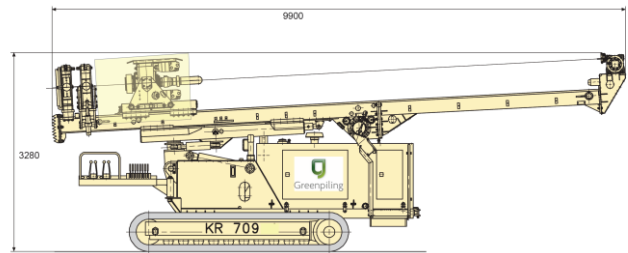
Rig Information Sheet



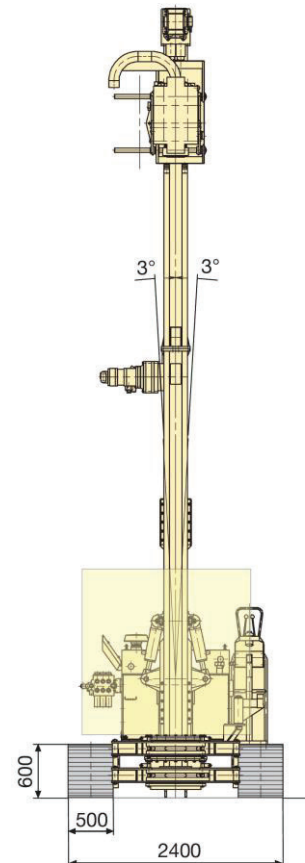
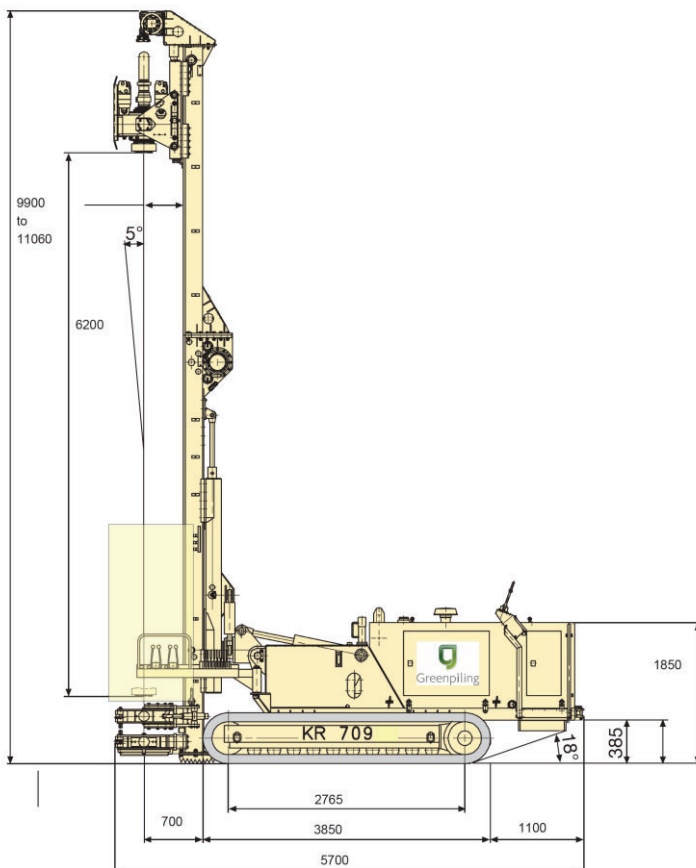
Technical Data

Specification		
Max drilling diameter	mm	508
Max clamping diameter	mm	508
Max pullback force	kN	130
Max Stroke	mm	6200
Nominal torque	kNm	32
Maximum retraction speed	m/min	6.2
Weight and Dimensions		
Transport width	mm	2400
Transport height	mm	3280
Operating height	mm	9900-11060
Gross weight	tonne	13.5
Overall length	mm	5700
Track shoe width	mm	500
Overall width	mm	2600
Typical Noise Level at 1m	dBa	111
Ground pressure	kPa	70

Transport Condition



Working Condition



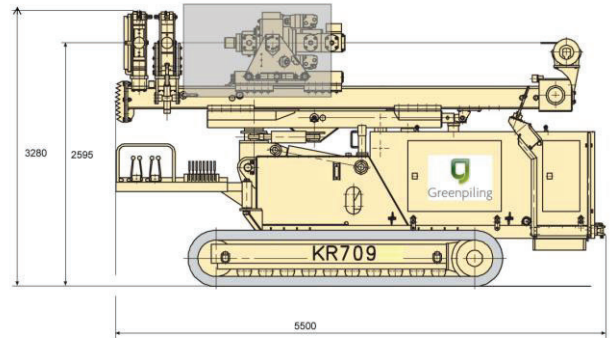
Klemm KR 709-2
Rig Information Sheet
Restricted



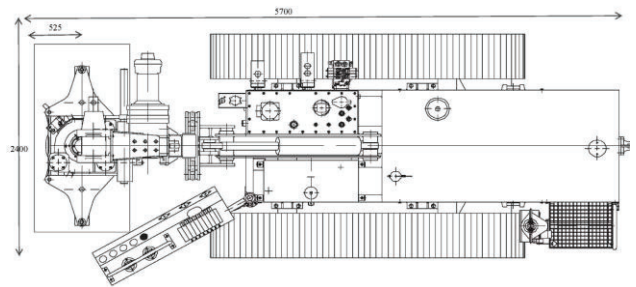
Technical Data

Specification		
Max drilling diameter	mm	508
Max clamping diameter	mm	508
Max pullback force	kN	130
Max Stroke	mm	1800-2950
Nominal torque	kNm	32
Maximum retraction speed	m/min	6.2
Weight and Dimensions		
Transport width	mm	2400
Transport height	mm	3280
Operating height	mm	5500-6660
Gross weight	tonne	13.2
Overall length	mm	5700
Track shoe width	mm	500
Overall width	mm	2600
Typical Noise Level at 1m	dBa	111
Ground pressure	kPa	48

Transport Condition



Plan



Working Condition

