

PUBLIC UTILITY LOCATIONS ARE APPROXIMATE, AND ARE INCLUDED FOR REFERENCE ONLY. THE SUB-CONTRACTOR MUST CONFIRM THESE LOCATIONS PRIOR TO WORKS COMMENCING

Drawing Number
21/NW/1201/044

NOTES

- LOCATION OF WORKS: E 185755; N 730464.
- ALL DIMENSIONS ARE IN MILLIMETERS UNLESS STATED OTHERWISE.
- ALL DIMENSIONS ARE APPROXIMATE. IT SHALL BE THE SUB-CONTRACTOR'S RESPONSIBILITY TO VERIFY ALL NECESSARY MEASUREMENTS PRIOR TO UNDERTAKING ANY WORKS.
- BEAR SCOTLAND HAS CONDUCTED AN INITIAL C2 INQUIRY AS PER NRSWA TO IDENTIFY ANY PUBLIC UTILITY APPARATUS IN THE VICINITY OF THE WORKS. ALL KNOWN SERVICES ARE NOTED ON THIS DRAWING. REFER TO PRE-CONSTRUCTION INFORMATION PACK FOR FURTHER DETAILS ON PUBLIC UTILITIES. SUB-CONTRACTOR OPERATIVES SHALL REMAIN VIGILANT FOR LOST OR UNRECORDED PUBLIC UTILITY APPARATUS.
- LOCATIONS OF SERVICES ARE INDICATIVE. IT SHALL BE THE SUB-CONTRACTOR'S RESPONSIBILITY TO VERIFY THESE LOCATIONS PRIOR TO UNDERTAKING ANY WORKS.
- REFER TO PRE-CONSTRUCTION INFORMATION PACK FOR FURTHER DETAILS.

LEGEND

- SITE EXTENTS
- SITE INFORMATION
- HAZARD INFORMATION
- ENVIRONMENTAL CONSTRAINT
- SSEN APPARATUS (HV AND LV CABLES)
- BT APPARATUS
- SGN APPARATUS
- SEWER
- SCOTTISH WATER MAINS
- MEAN HIGH WATER SPRINGS

Do not scale this drawing

Rev	Date	FIRST ISSUE	CHKD	RC

FOR INFORMATION

Rev.

O

Client

Project	4G NW NETWORK ROUTINE MAINTENANCE A85 679 W87 ESPLANADE SEA WALL REPAIRS
Title	SITE LOCATION AND SITE CONSTRAINTS GENERAL INFORMATION

Drawing No.	21/NW/1201/044				
Scale	AS SHOWN @ A1	Date	NOV 2021		
Designed	SZ	Drawn	SZ	Checked	CHKD
				Approved	APPR

NOTES

- THIS DRAWING IS TO BE READ IN CONJUNCTION WITH DRAWING NO. 21/NW/1201/044/001.
- ALL DIMENSIONS ARE IN MILLIMETERS UNLESS STATED OTHERWISE.
- ALL DIMENSIONS ARE APPROXIMATE. IT SHALL BE THE SUB-CONTRACTOR'S RESPONSIBILITY TO VERIFY ALL NECESSARY MEASUREMENTS PRIOR TO WORKS COMMENCING.
- ALL CONCRETE WORKS SHALL BE CARRIED OUT IN ACCORDANCE WITH MCHW VOL.1 SERIES 1700 AND THE SPECIFICATIONS OF THIS PROJECT.
- REFER TO PRE-CONSTRUCTION INFORMATION PACK FOR FURTHER DETAILS ON SPECIFICATION.
- ALL CONCRETE SHALL BE ST5 CONCRETE WITH MAXIMUM AGGREGATE SIZE OF 20mm AND SLUMP CLASS S2, AND SHALL CONFORM TO BS 8500-2.
- CONCRETE COVER TO FABRIC REINFORCEMENT AND DOWELS SHALL NOT BE LESS THAN 70mm
- EXACT LOCATION OF AND NUMBER OF DOWELS TO BE AGREED ON SITE WITH BEAR SCOTLAND'S ENGINEER.
- NEW HANDRAILS TO BE TIED IN WITH EXISTING ADJACENT HANDRAILS.
- POST LOCATIONS FOR PROPOSED HANDRAILS ARE INDICATIVE. EXACT LOCATIONS TO BE AGREED ON SITE BETWEEN BEAR SCOTLAND'S ENGINEER AND SUB-CONTRACTOR'S REPRESENTATIVE.

LEGEND

- CONCRETING WORKS
- REPOINTING WORKS
- FABRIC REINFORCEMENT
- PROPOSED HANDRAIL
- MEAN HIGH WATER SPRINGS

Do not scale this drawing

O	DATE	FIRST ISSUE	CHKD	RC
Rev	Date		Checked	

FOR INFORMATION

Rev.

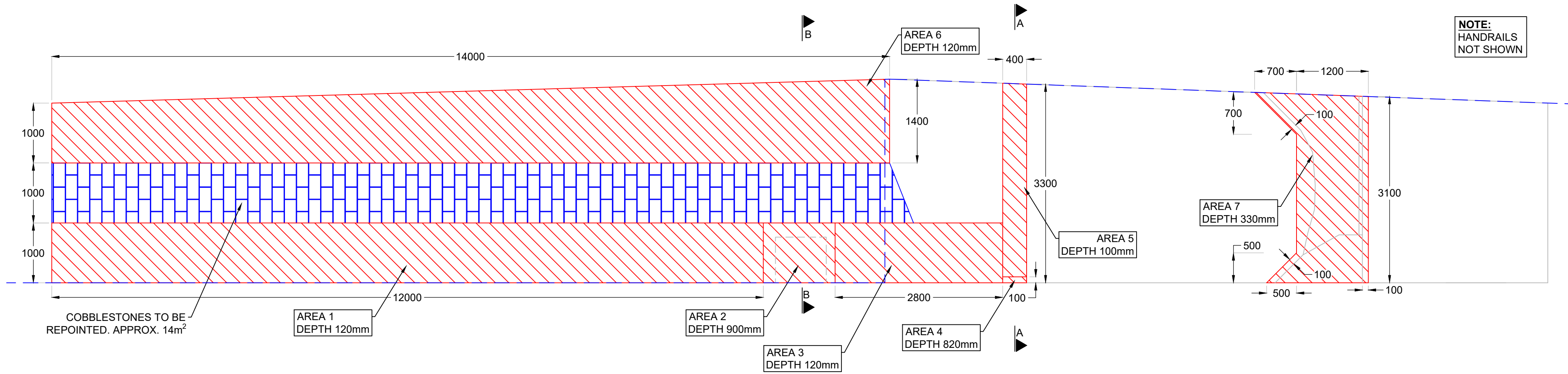
O



Project 4G NW NETWORK ROUTINE MAINTENANCE
A85 670 W87 ESPLANADE SEAWALL SCOUR REPAIRS

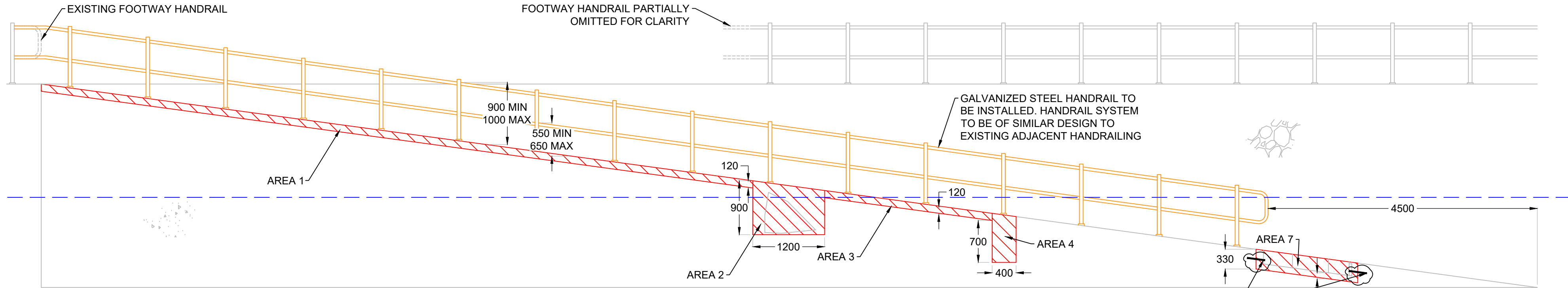
Title REPAIRS TO SLIPWAY AND ACCESS STEPS

Drawing No.	21/NW/1201/044/002				
Scale	AS SHOWN @ A1	Date	NOV 2021		
Designed	SZ	Drawn	SZ	Checked	CHKD
				Approved	APPR



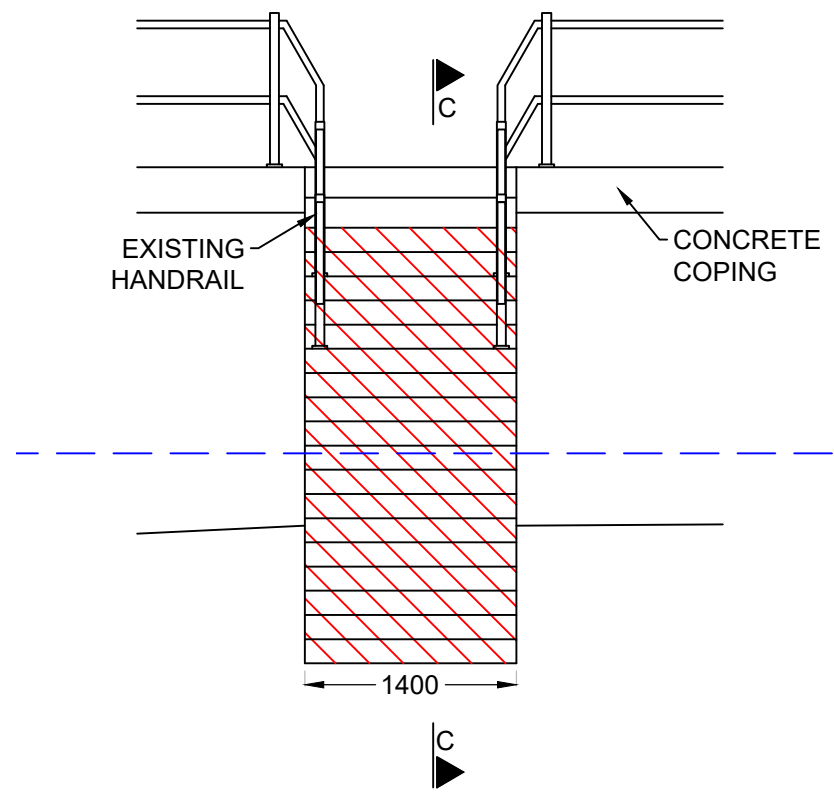
PLAN ON SLIPWAY

SCALE 1:50



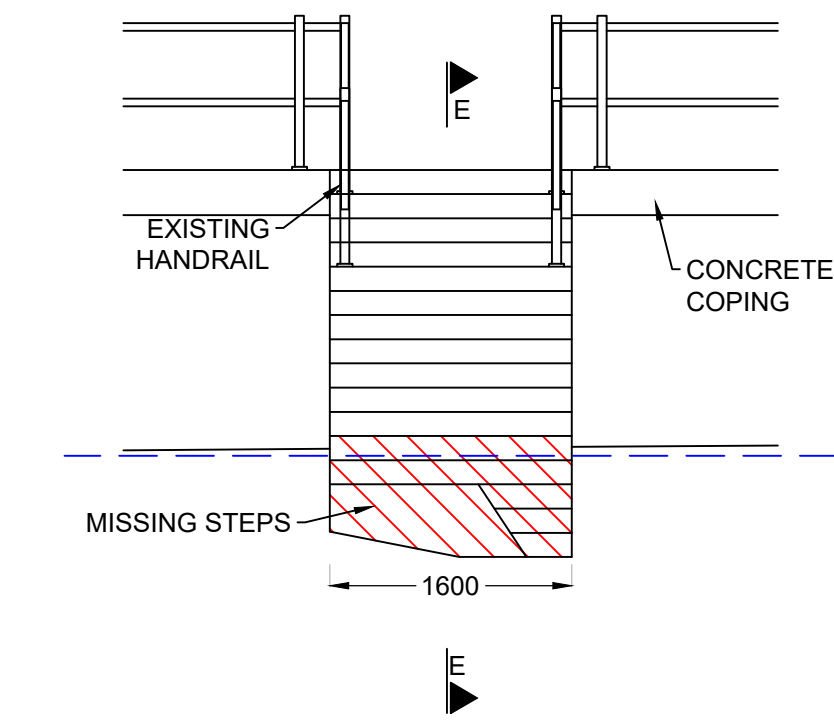
ELEVATION (EAST) ON SLIPWAY

SCALE 1:50



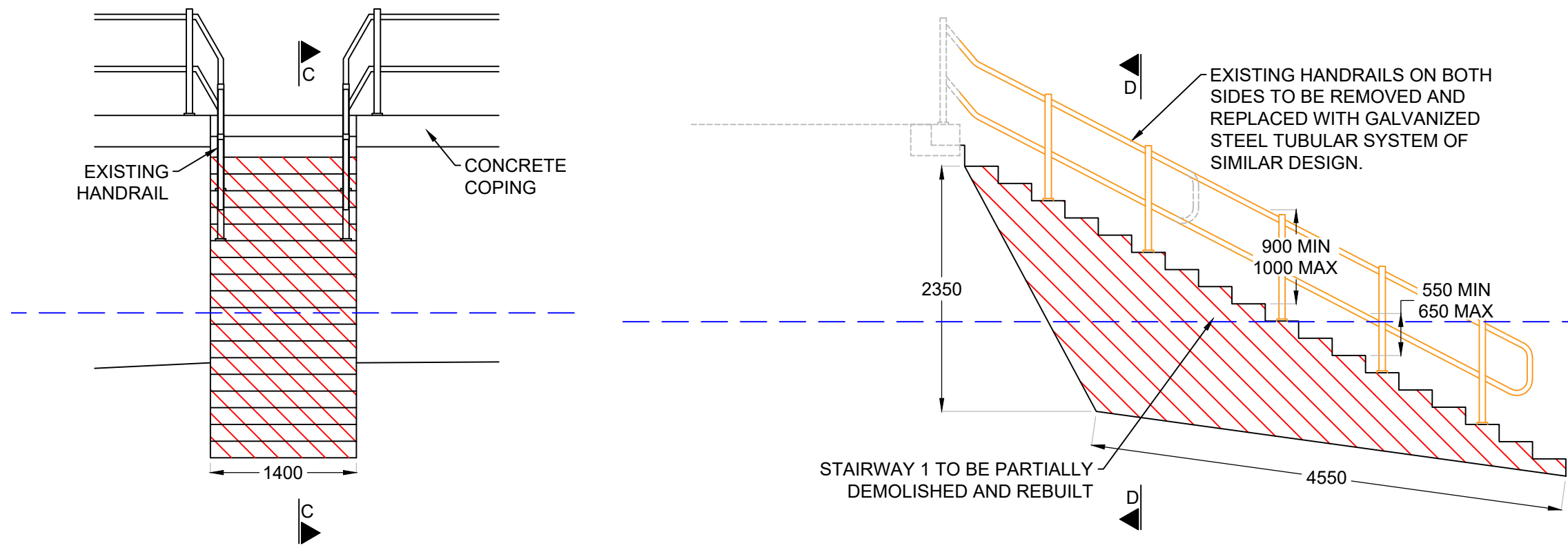
EAST ELEVATION ON STAIRWAY 1

SCALE 1:50



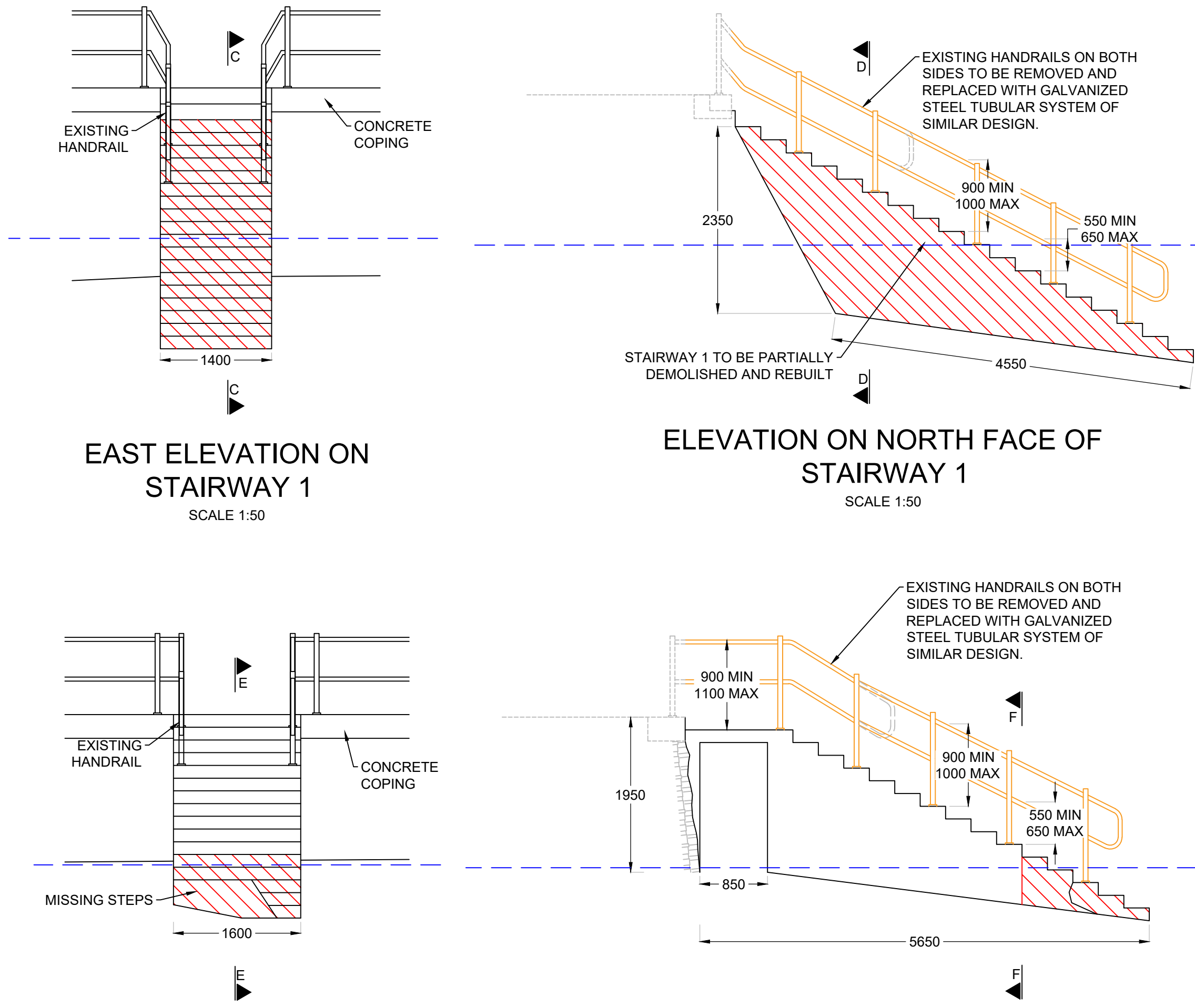
EAST ELEVATION ON STAIRWAY 2

SCALE 1:50



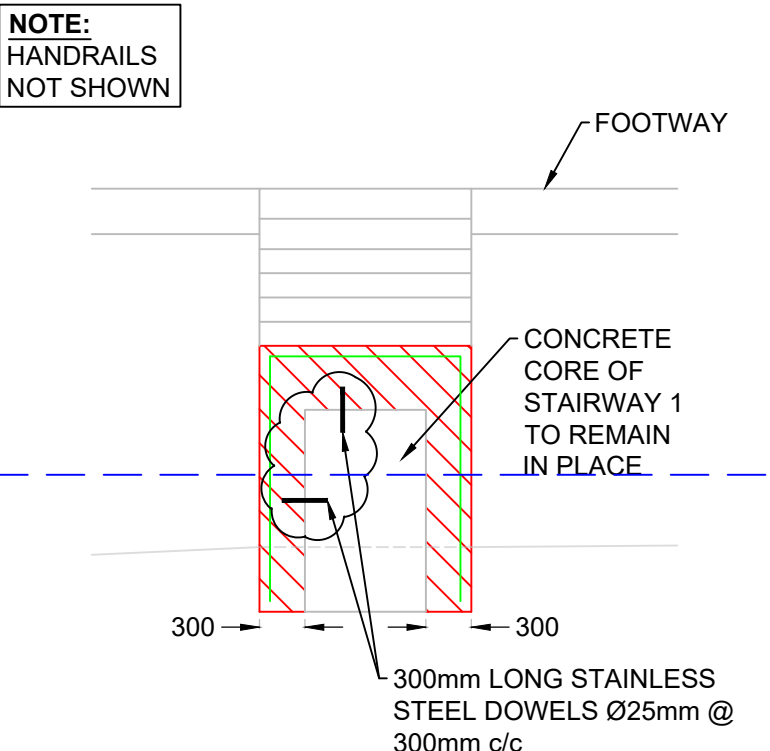
ELEVATION ON NORTH FACE OF STAIRWAY 1

SCALE 1:50



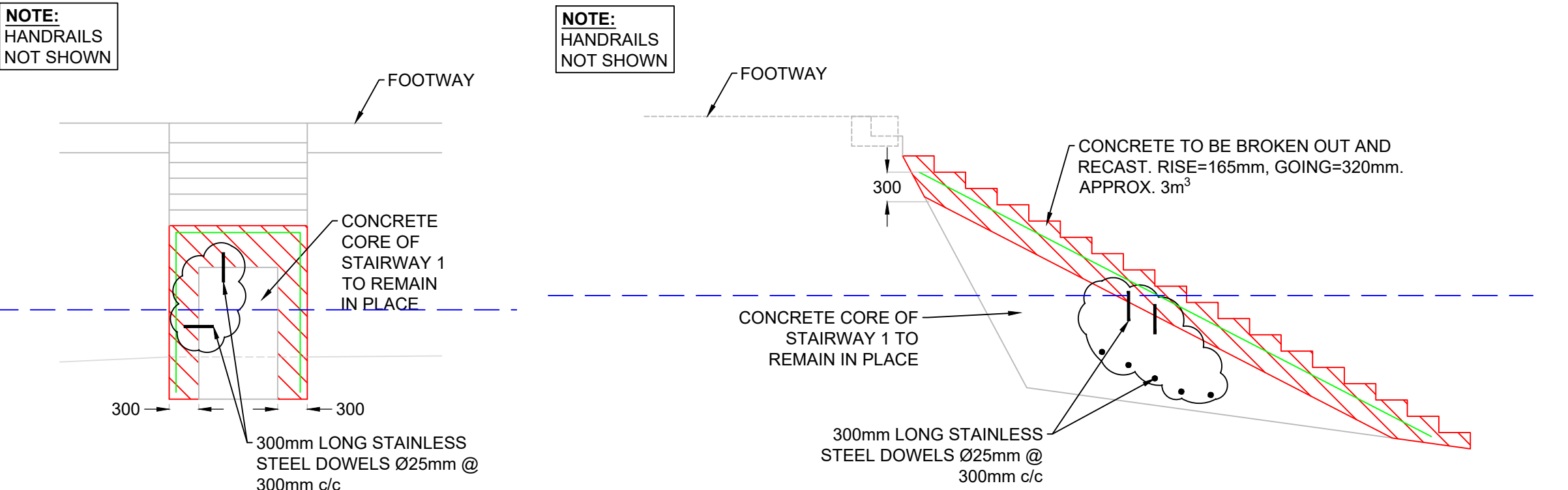
ELEVATION ON NORTH FACE OF STAIRWAY 2

SCALE 1:50



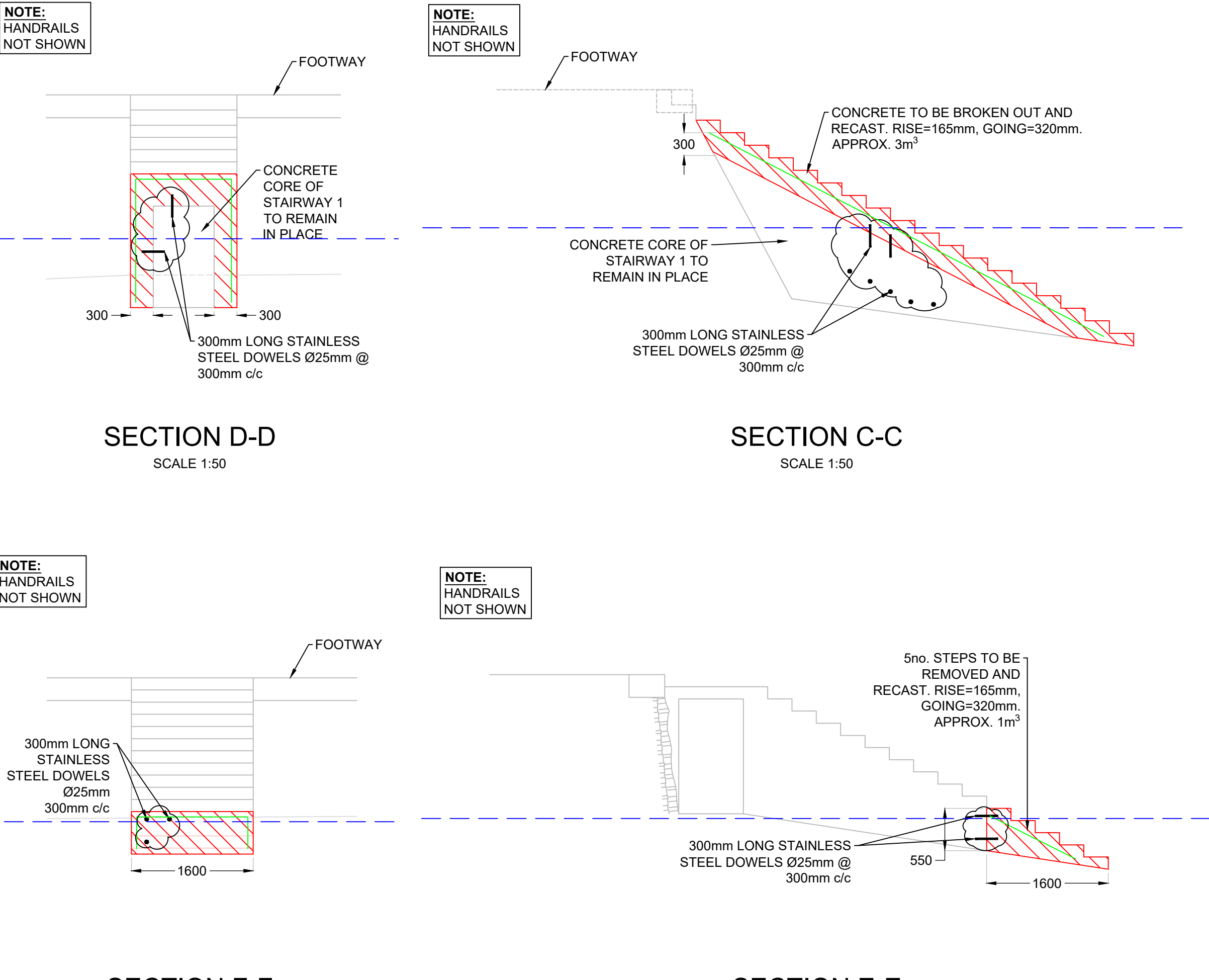
SECTION D-D

SCALE 1:50



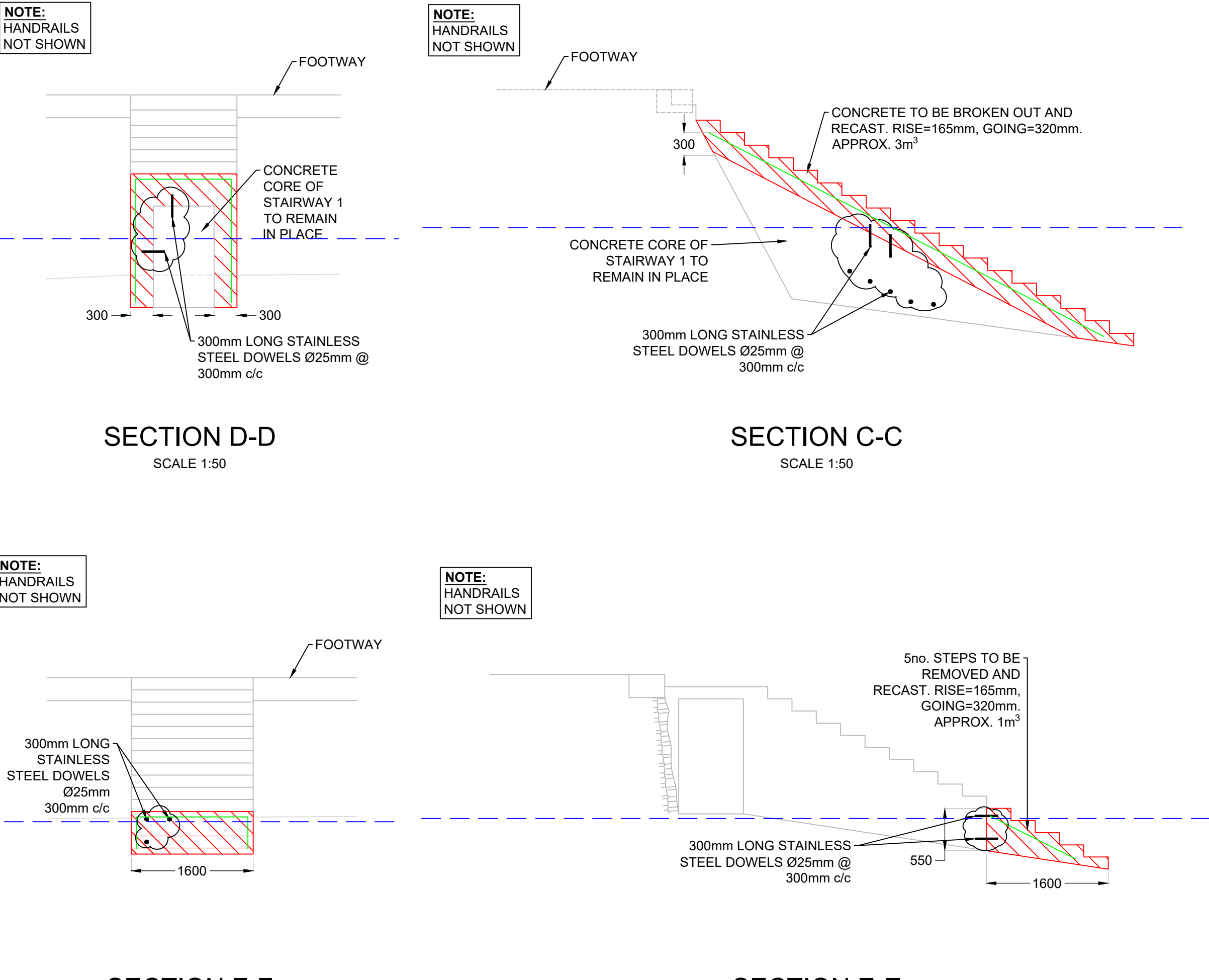
SECTION C-C

SCALE 1:50



SECTION E-E

SCALE 1:50



SECTION F-F

SCALE 1:50