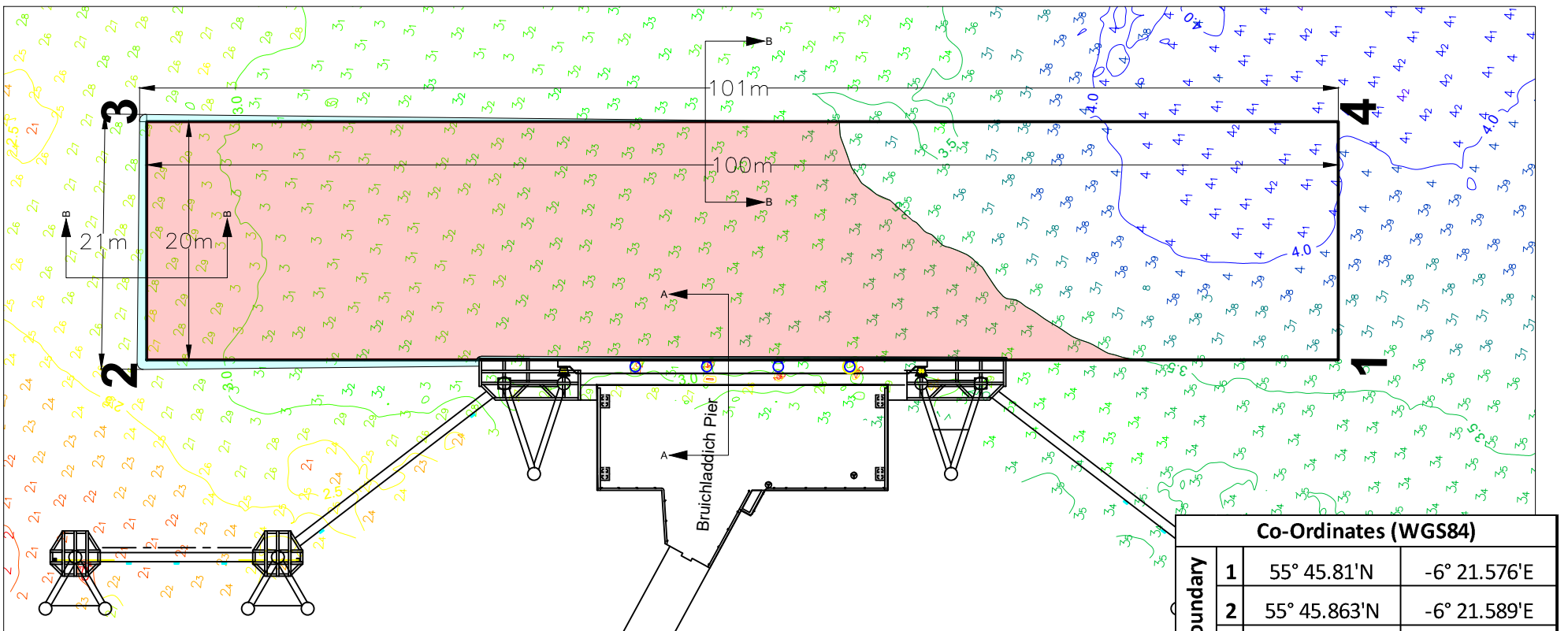


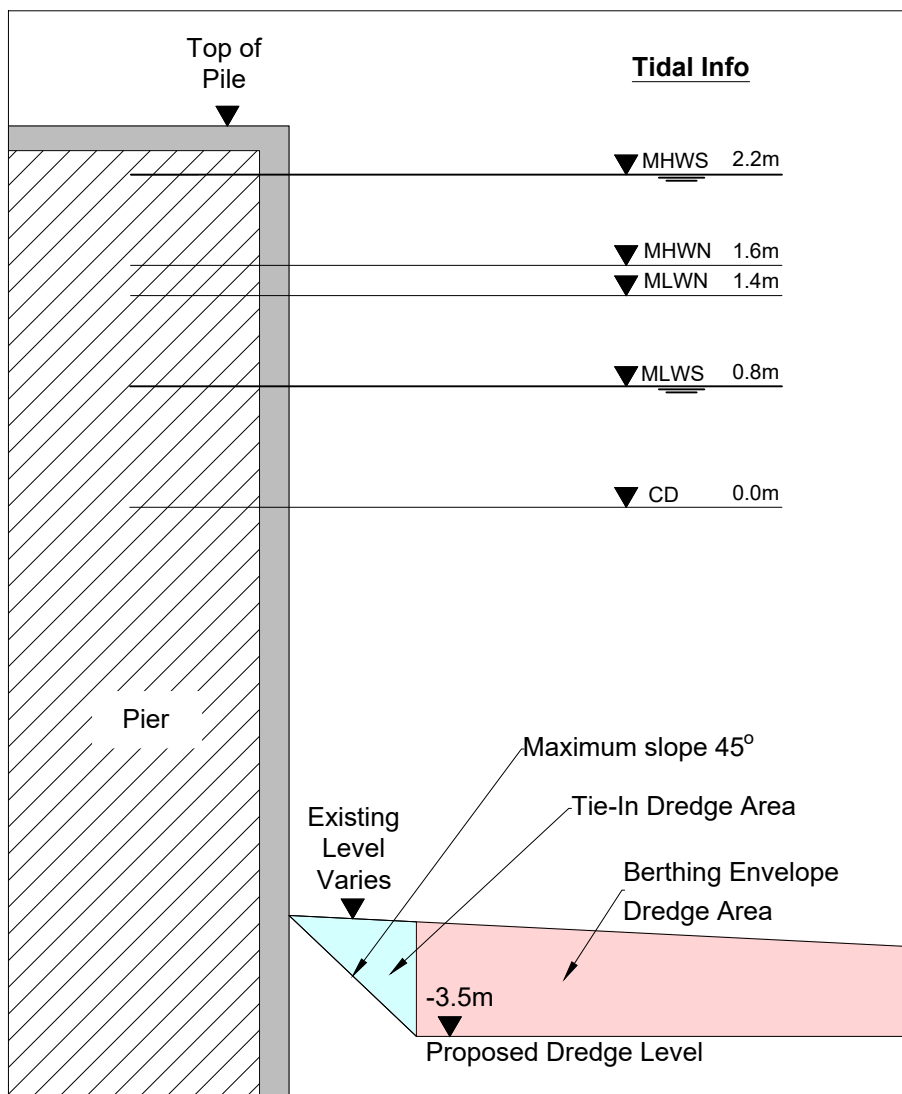
ARGYLL & BUTE COUNCIL --- DEVELOPMENT AND INFRASTRUCTURE SERVICES



Co-Ordinates (WGS84)		
Site Boundary	1	55° 45.81'N -6° 21.576'E
	2	55° 45.863'N -6° 21.589'E
	3	55° 45.864'N -6° 21.571'E
	4	55° 45.811'N -6° 21.557'E

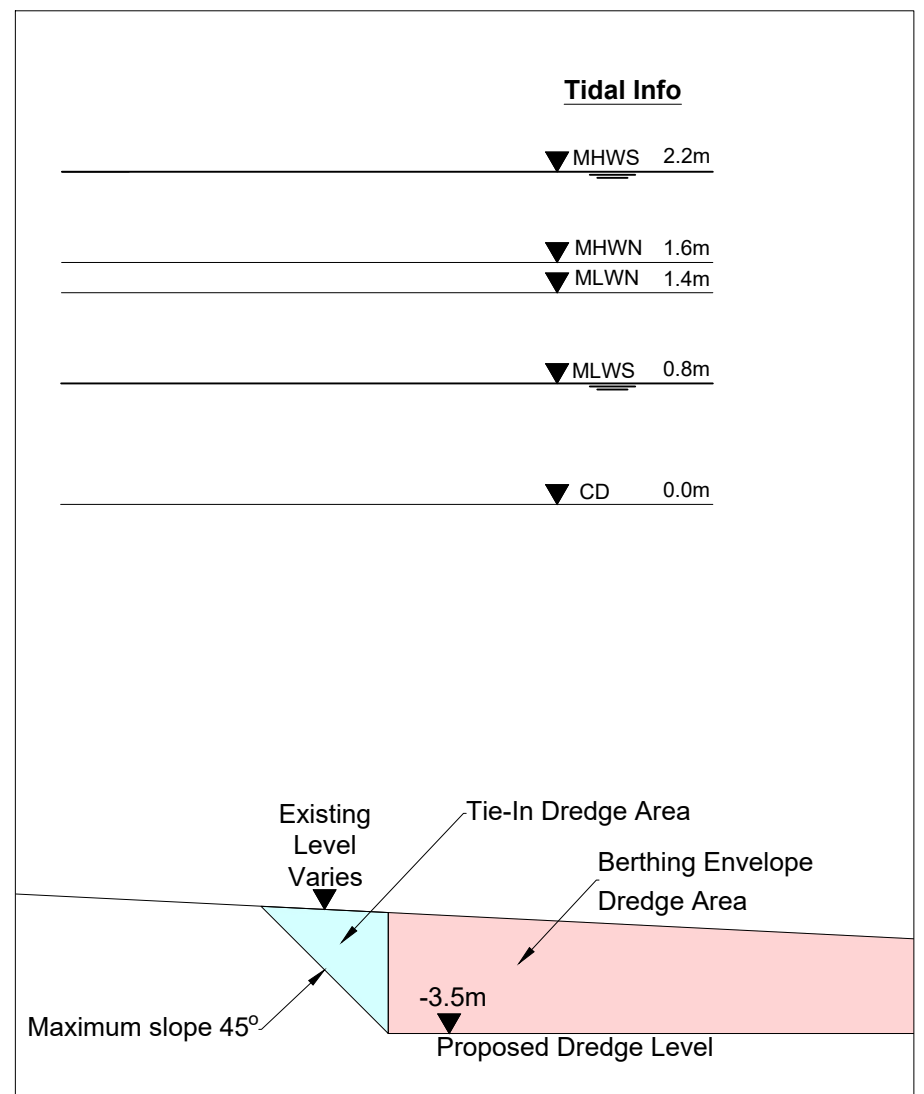
Proposed Dredge Area Plan

see note 3
Scale 1:500



Section A-A

Vertical Scale 1:50



Section B-B

Vertical Scale 1:50

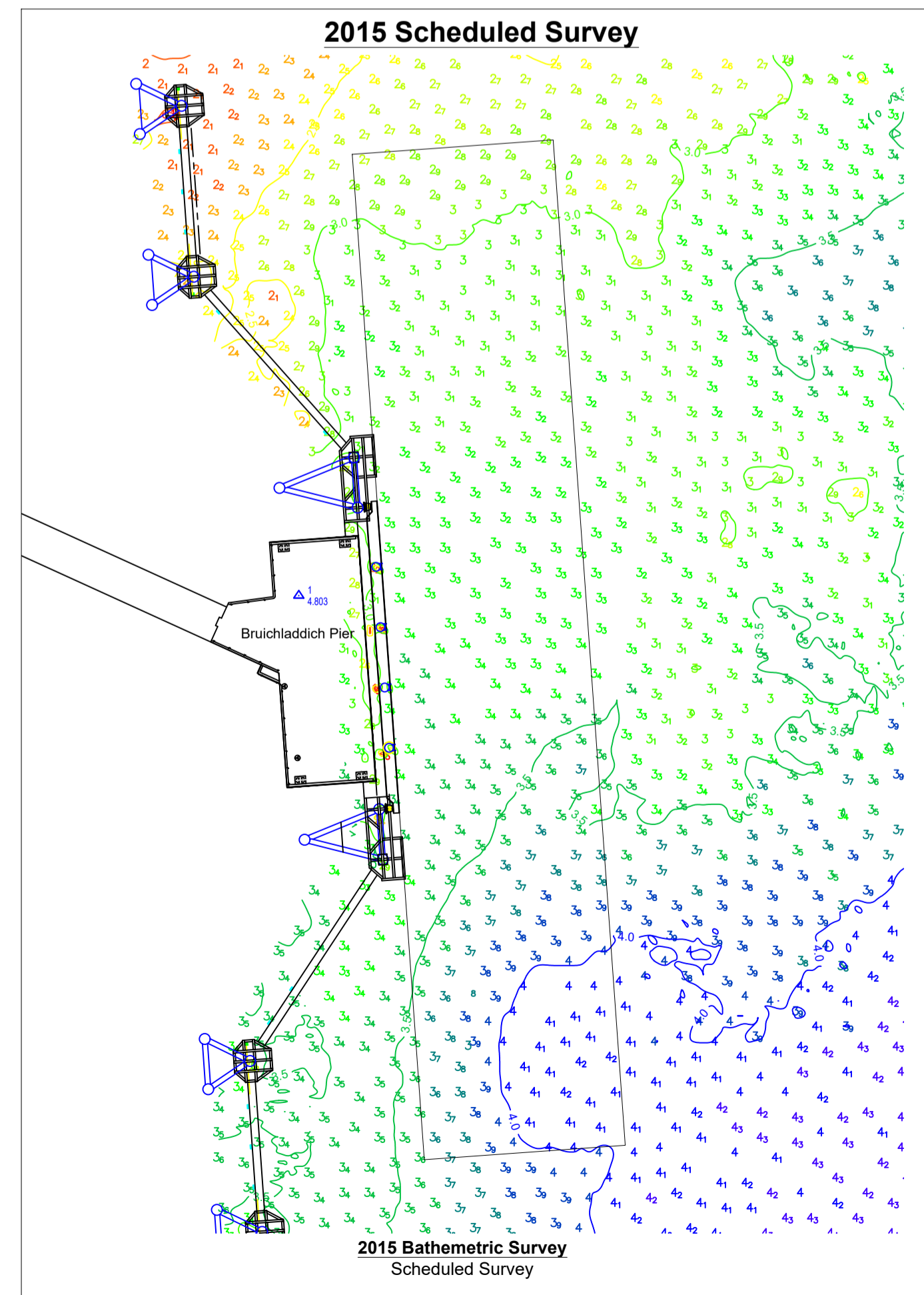
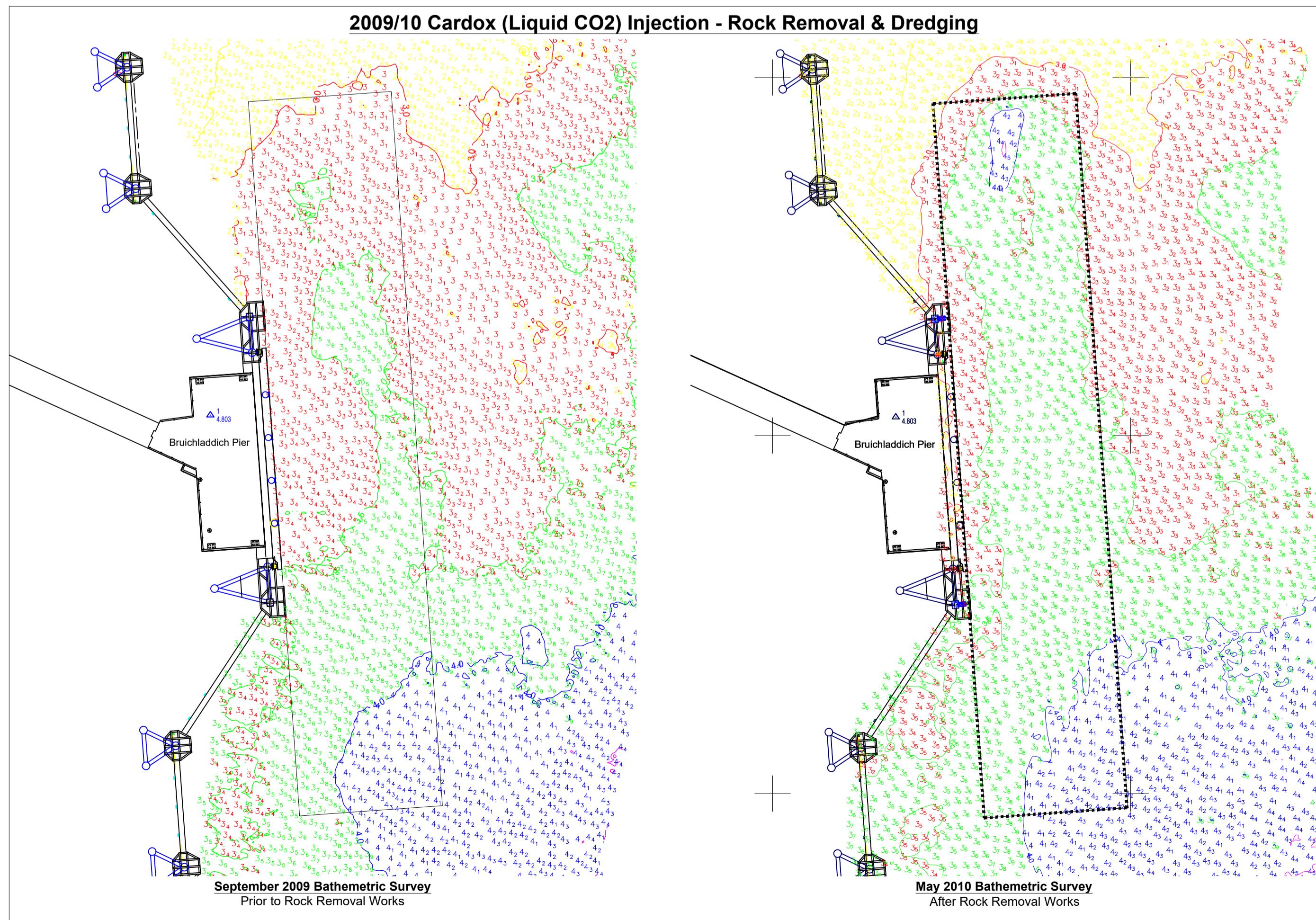
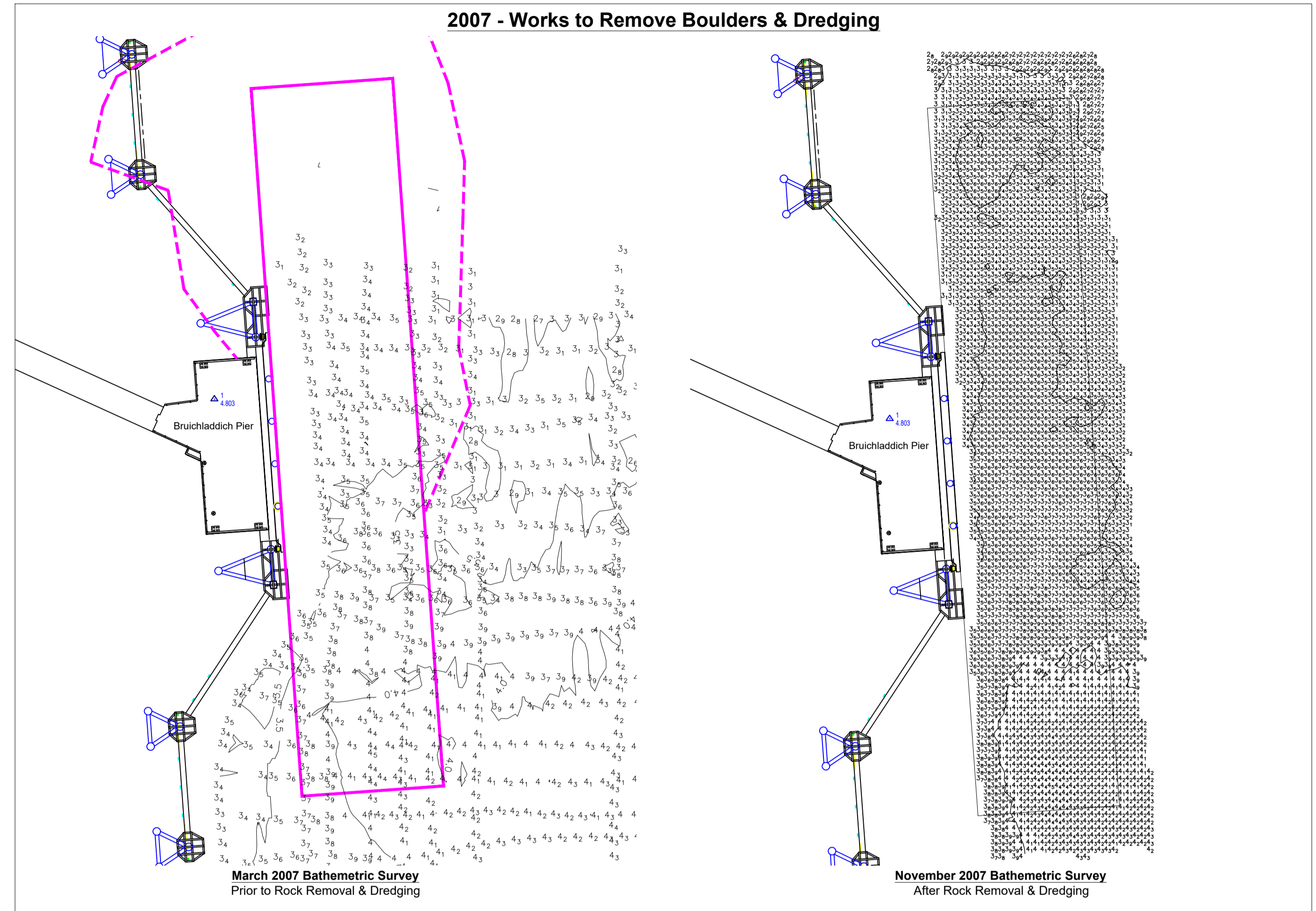
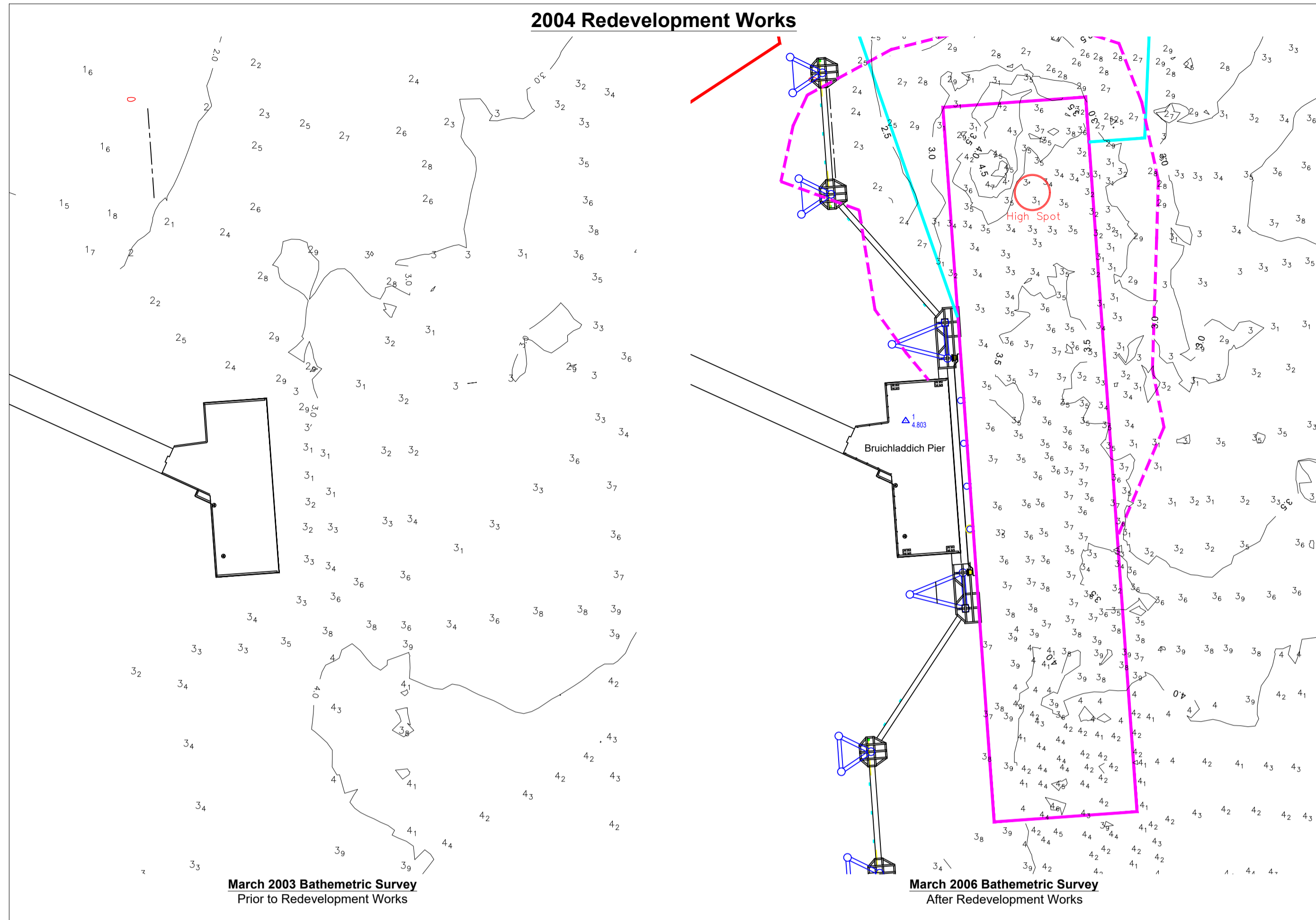
NOTES :

- 1) All dimensions are in metres unless noted otherwise.
- 2) All levels are in metres below Chart Datum.
- 3) 2015 Bathymetric Survey levels shown in Proposed Dredge Area Plan.

© Crown copyright and database right 2019. All right reserved.
Ordnance Survey Licence number 100023368

TITLE	Director of Development and Infrastructure Services Pippa Milne	
	DESIGNED BY JS	DRAWING NUMBER: 00040-29 / 005
Proposed Capital Dredge Area Arrangement	DRAWN BY JS	SCALE: As Shown at A3
	CHECKED BY ES	
DESIGN OFFICE, MANSE BRAE, LOCHGILPHEAD, ARGYLL, PA31 8RD	APPROVED BY ES	
	DATE 18/09/19	

ARGYLL & BUTE COUNCIL --- DEVELOPMENT AND INFRASTRUCTURE SERVICES



Heights in metres above Chart Datum			
MHWS	MHWN	MLWN	MLWS
2.2	1.6	1.4	0.8

- NOTES :
- 1) All dimensions are in metres unless noted otherwise.
 - 2) All levels are in metres below Chart Datum.

© Crown copyright and database right 2019. All right reserved. Ordnance Survey Licence number 100023368

Director of Development and Infrastructure Services
Pippa Milne

DESIGN OFFICE,
MANSE BRAE, LOCHGILPHEAD, ARGYLL, PA31 8RD

TITLE

**Bruichladdich Pier
Dredging History**

SCALES 1:500

DESIGNED BY	JS	DRAWING No. 00040-29 / 002
DRAWN BY	JS	
CHECKED BY	ES	
APPROVED BY	ES	
DATE	19/03/2019	

