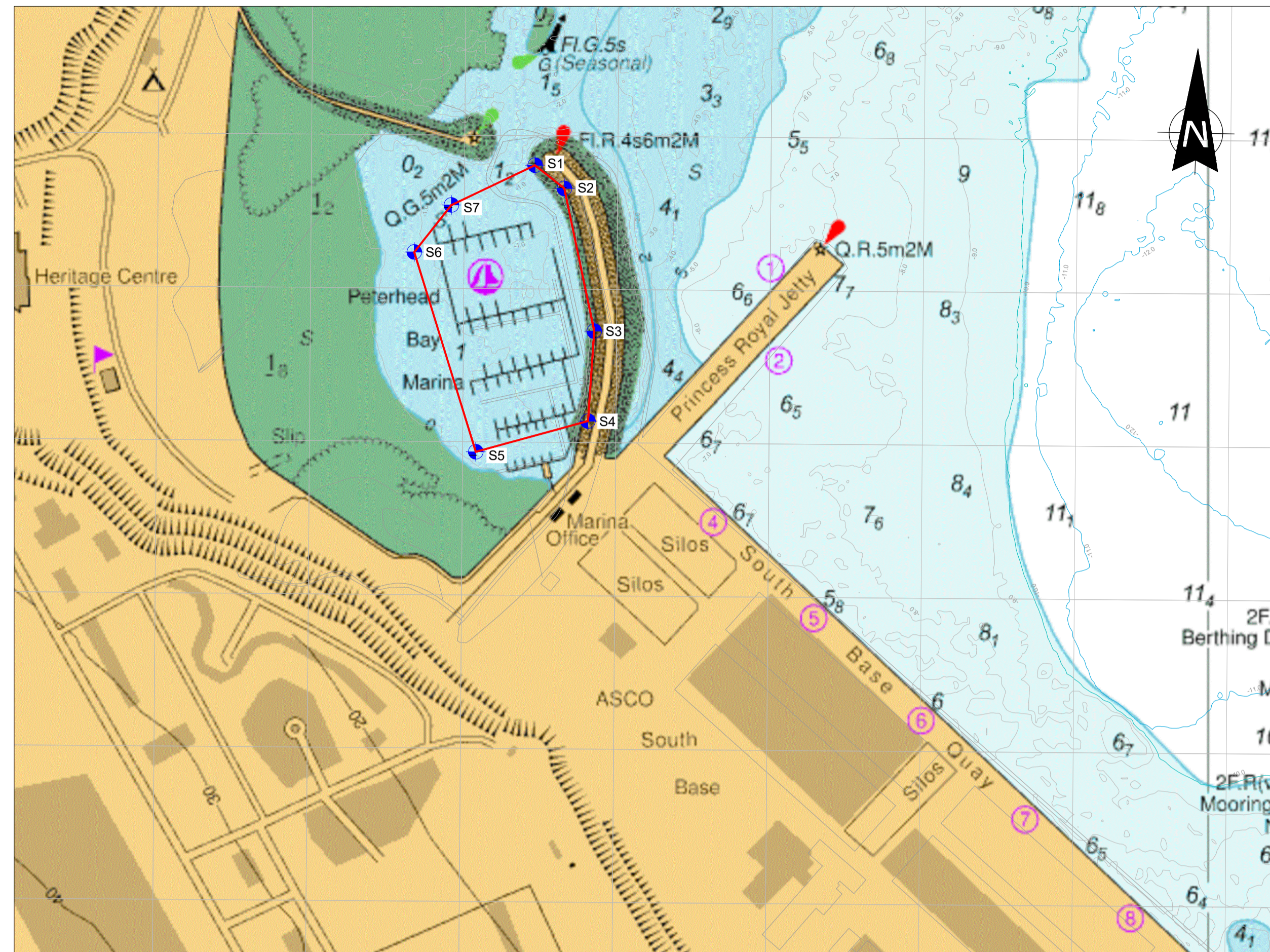


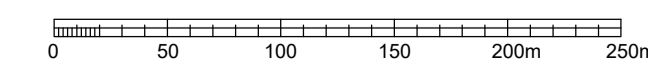
PORT HENRY - SITE LOCATION, 1:2500



BAY MARINA - SITE LOCATION, 1:2500

POINTS LOCATION - WGS84		
Points No.	Latitude	Longitude
N1	57° 30.410'N	1° 46.364'W
N2	57° 30.398'N	1° 46.375'W
N3	57° 30.400'N	1° 46.387'W
N4	57° 30.409'N	1° 46.392'W
N5	57° 30.416'N	1° 46.386'W

POINTS LOCATION - WGS84		
Points No.	Latitude	Longitude
S1	57° 29.799'N	1° 47.441'W
S2	57° 29.791'N	1° 47.421'W
S3	57° 29.741'N	1° 47.401'W
S4	57° 29.710'N	1° 47.405'W
S5	57° 29.699'N	1° 47.478'W
S6	57° 29.769'N	1° 47.519'W
S7	57° 29.785'N	1° 47.495'W



- NOTES**
- ALL LEVELS TO CHART DATUM.
 - ALL COORDINATES AS ACCORDANCE TO WGS84.
 - TIDE LEVELS AS FOLLOW:
 - MEAN HIGH WATER SPRINGS (MHWS) +3.80m CD
 - MEAN LOWER WATER SPRINGS (MLWS) +0.50m CD

Rev.	Date	Description	App'd
-	15-07-25	FOR INFORMATION	ACW

CONCEPT DESIGN



Title :
**PETERHEAD
 PORT HENRY AND BAY MARINA
 BASIN DREDGING**



Project No: 81400408

Drawn	Checked	Approved	Scale (at A1):	AS DRG
CBGSE	MFAU	ACW	Date:	JULY 2025

Drg No:	Rev
-	-