

moray offshore renewables ltd

Developing Wind Energy In The Outer Moray Firth

Environmental Statement

Modified Transmission Infrastructure for
Telford, Stevenson and MacColl Wind Farms

Pre-Application Consultation Report



Contents

Introduction

- | | |
|--|--|
| <p>1. Background - Moray Offshore Renewables Ltd</p> <p>Moray Offshore Renewables Ltd
EDPR UK
Repsol Nuevas Energias UK</p> <p>2. Background to Development</p> <p>Development Of Offshore Wind In The Outer Moray Firth – Telford, Stevenson & MacColl Windfarms
Onshore Transmission Infrastructure – History Of Development</p> <p>3. Modified Transmission Infrastructure</p> <p>Cable Landing Point
Underground Cable Route
Substation Infrastructure</p> <p>4. Aims of Consultation</p> <p>5. Overview of Pre Application Consultation</p> <p>Public Exhibitions
Community Councils Notification
Newspaper Advertisements
Local Advertisements
Direct Neighbourhood Notification
Notification of Elected Members
Editorial Coverage in Local & National Press</p> <p>6. Attendance At Public Exhibitions</p> <p>7. Public Response to Consultation</p> <p>Developer Feedback to Questions</p> | <p>8. Project Development Following Consultation</p> <p>Substation Site Selection
Landscaping & Screening
Electro-Magnetic Fields</p> <p>9. Pre Application Consultation With Aberdeenshire Council</p> <p>Annex 1 – Public Exhibition Story Boards
Annex 2 – Public Information Brochure
Annex 3 – Community Council Letter
Annex 4 – Example Newspaper Advertisement
Annex 5 – Advertisement Poster
Annex 6 – Direct Notification Letter
Annex 7 – Media Coverage
Annex 8 – Notice of Application & Response</p> |
|--|--|

Moray Offshore Renewables Ltd

Modified Transmission Infrastructure

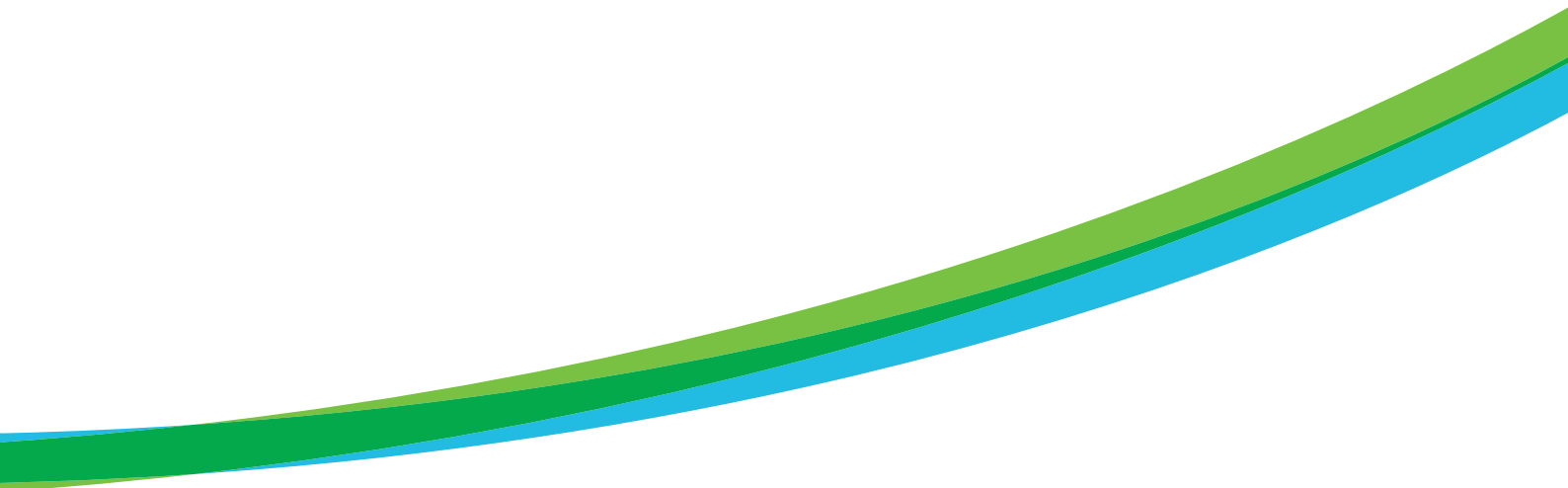
Pre-Application Consultation Report

Introduction

Moray Offshore Renewables Ltd (MORL) has undertaken a pre-application consultation in accordance with the Town and Country Planning (Scotland) Act 1997 as amended by the Planning (etc) Scotland Act 2006 for onshore transmission infrastructure to deliver electricity generated at a proposed offshore wind farm in the outer Moray Firth to the National Grid, south west of New Deer.

The pre-application consultation included three 8-hour public exhibitions, a two-week advertising campaign in four local publications, and the notification of nine community councils. Although the events attracted 135 attendees, the written feedback submitted by the public was limited.

This report is prepared according to Aberdeenshire Council's Pre Application Consultation Reports Guidance Note in order to provide information about the pre-application consultation activities and their outcomes.



1. Background - Moray Offshore Renewables Ltd

Moray Offshore Renewables Ltd

In January 2010, Moray Offshore Renewables Ltd (MORL) was awarded a Zone Development Agreement by The Crown Estate to develop up to 1,500MW of offshore wind generation in Zone 1 of the Third Round of UK Offshore Wind Licencing.

MORL is a joint venture company, established specifically for this purpose, and is owned by EDP Renewables (EDPR UK Ltd) (67 per cent) and by Repsol Nuevas Energias UK (33 per cent). It is a centralised team, working from EDPR's UK offices in Edinburgh.

EDPR UK

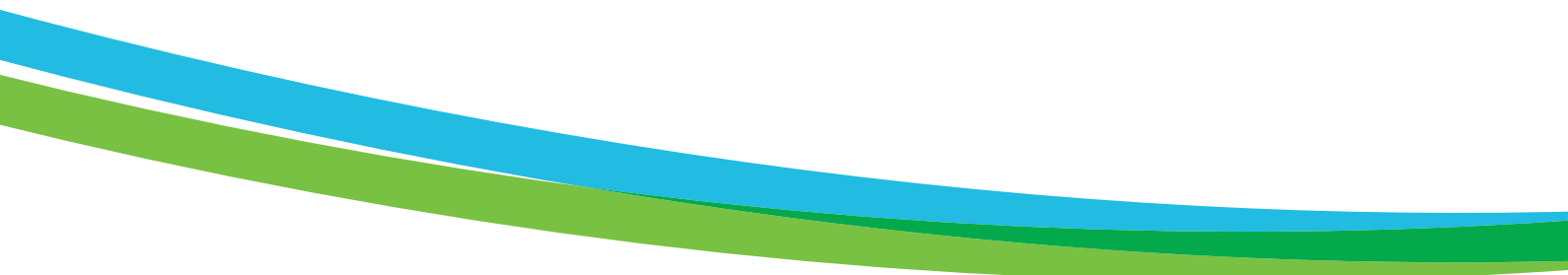
EDPR UK is a wholly owned subsidiary of EDP Renewables which is a world leader in the renewable energy sector. EDP Renewables ("EDPR") is a leading renewable energy company headquartered in Madrid, Spain that develops, manages and operates power plants that generate electricity using renewable energy sources, mainly wind and solar. EDPR was incorporated in 2007 with the clear objective of supplying a growing number of geographies with low carbon and renewable energy, EDPR has quickly grown to become a global company and a leader in the market.

EDPR operates in the most attractive markets and is continuously expanding its business to new areas of the globe. EDPR's business plan aims to increase its production capacity considering the best investment opportunities. This strategy has allowed EDPR to be the world's fourth largest company in terms of production in the wind sector, with a global portfolio of 8,580 MW of installed capacity at year-end 2013. In addition, EDPR owns and operates over 50 MW of solar photovoltaic power plants in various geographies with hundreds of additional megawatts in development. EDPR is currently developing onshore and offshore wind and solar projects in eight European Countries (Spain, Portugal, France, Belgium, Italy, Poland, Romania and the UK), as well as the United States, Brazil, South Africa and Canada.

This period of intense growth has resulted in the company gaining extensive experience in the design, development, operation and maintenance of wind farms. Such experience is coupled with the skill and knowledge of its parent company EDP Group which has an extensive and diversified generation, distribution, supply and retail portfolio. EDP Group owns and operates more than 18GW of power generation and supplies 70 TWh of electricity to nearly 10 million customers in Spain, Portugal and Brazil.

Repsol Nuevas Energias UK

Repsol Nuevas Energias UK is a wholly owned subsidiary of Repsol Nuevas Energias, a major integrated energy company headquartered in Spain. It is a Fortune 500 company with a turnover in the region of 60 billion Euros. The company's history is in hydrocarbons, both upstream - in development and production - and downstream, in refining, marketing, trading and transportation. In 2010 Repsol recognised the importance of renewable energies and Repsol Nuevas Energias was formed. In June 2011, Repsol Nuevas Energias UK was established following Repsol's purchase of 100% of SeaEnergy Renewables Limited. Repsol Nuevas Energias new UK headquarters in Edinburgh is responsible for all UK offshore wind activities and is Repsol's centre of expertise for offshore renewables.



2. Background to Development

Development Of Offshore Wind In The Outer Moray Firth – Telford, Stevenson & MacColl Windfarms

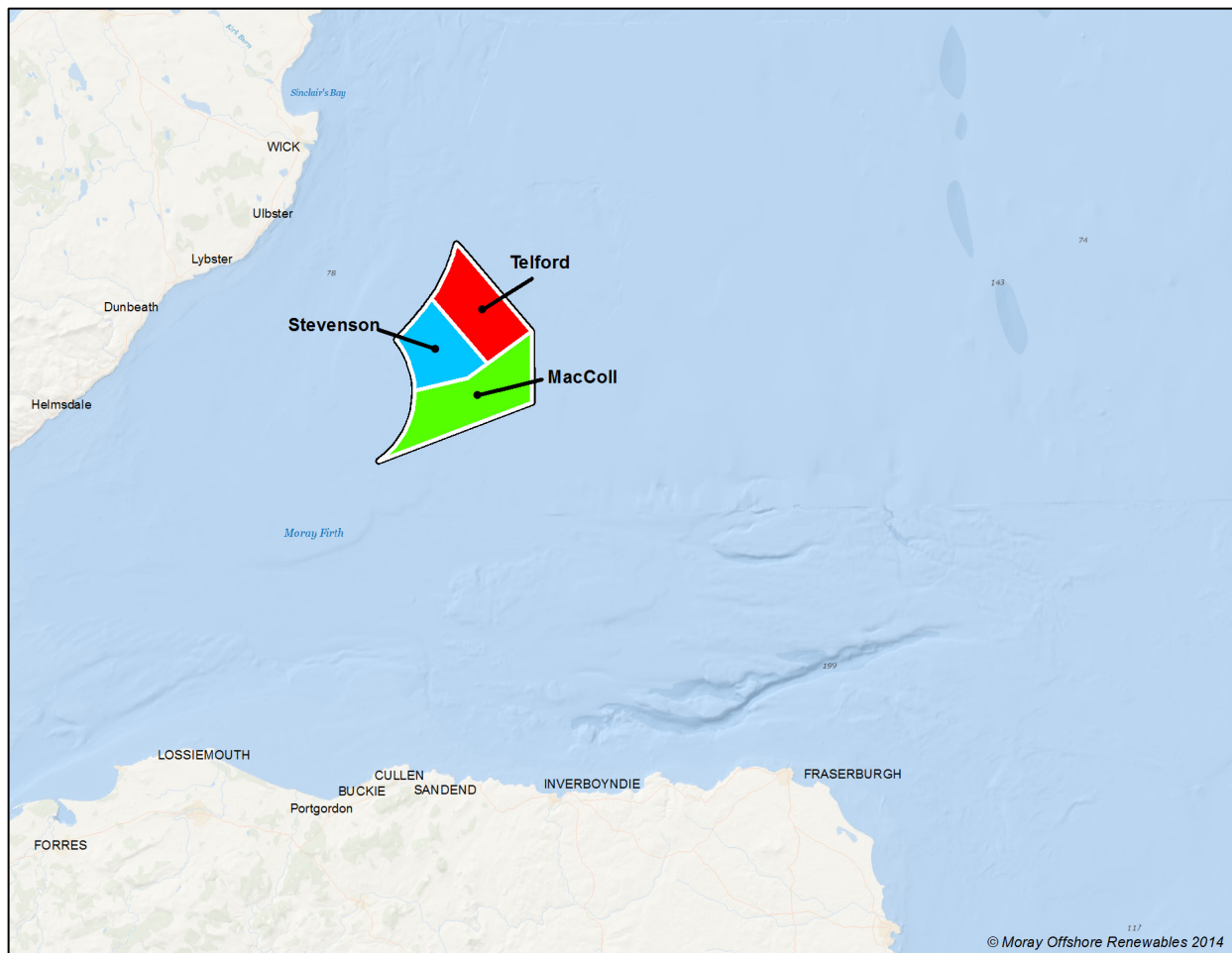
In 2010, after award of Zone 1 (Moray Firth) of The Crown Estate Round 3 tender, MORL commenced the development of proposals for offshore wind generation in the outer Moray Firth. In autumn of 2010, a scoping report was prepared, and distributed to a wide range of consultees, including Aberdeenshire Council.

In 2012, after three years of development work, MORL submitted an application for Section 36 Consents and Marine Licences for three offshore wind farms, Telford, Stevenson and MacColl (see Map 1 below) and associated offshore transmission infrastructure (TI) ("The Project") to Marine Scotland. In March 2014, the Scottish Government granted MORL consent for the construction and operation of 1,116MW, which will be spread across three wind farms within the eastern development area (EDA) of Zone 1 (Telford, Stevenson and MacColl) in the outer Moray Firth. The closest point is 22km (14 miles) from the Caithness coastline.

MORL first engaged with Aberdeenshire Council in 2010 as part of consultation for the Scoping Report for the Project, and developed a dialogue with the council over the course of the following years focusing on its planning, infrastructure and economic development functions.

Aberdeenshire Council was a statutory consultee of Marine Scotland in the application process in 2012, and raised no objection to the Project proposals.

Map 1 - Location of Consented Offshore wind farms

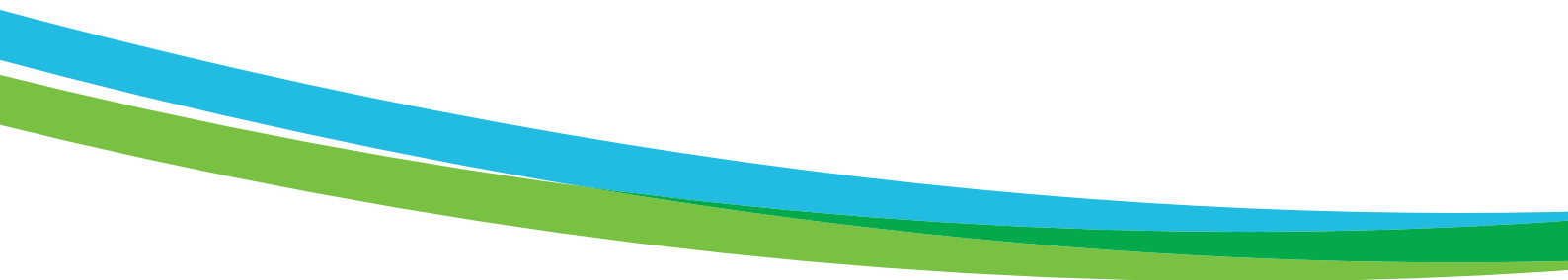


Onshore Transmission Structure – History of Development

Initial proposals for the Project's onshore TI were contained in the Environmental Statement (ES) (MORL ES, 2012). At the time these proposals were made, MORL had a contracted grid connection agreement with National Grid with an interface point at Peterhead power station using Direct Current (DC) technology. Consequently MORL had undertaken initial work to develop onshore and offshore proposals on this basis, including a landing-point at Fraserburgh beach, an underground cable route to Peterhead, and substations at Peterhead. This would have required MORL to make a Town and Country Planning application for this infrastructure, and preliminary discussions for this work were undertaken with the local area planning office in Peterhead in 2011.

Since the submission of the original applications, the grid connection point has changed from Peterhead to southwest of New Deer. The change of interface point with the national grid was brought about due to MORL's participation in the Connections Infrastructure and Options Note (CION) process. CION is a joint process between National Grid, the regional Transmission Owner and the generator builder which seeks to identify the most economic and efficient grid connection solution against the current system background. Thus MORL's connection at Peterhead was replaced with a new agreement with an interface point southwest of New Deer which was signed in September 2013.

This change requires new proposals for both the onshore and offshore TI (referred to as the modified TI) to be developed. This Pre Application Consultation deals with the onshore aspects of that work (OnTI).



3. Modified Transmission Infrastructure

The modified TI comprises both offshore and onshore elements. The offshore elements (offshore substations and subsea cabling connecting the wind farm to the mainland) are the subject of a separate consent application to Marine Scotland. The onshore elements all fall within the Aberdeenshire Council area, and are the subject of the Town and Country planning application for planning permission in principle to which this pre-application consultation relates.

The elements of the modified OnTI are:

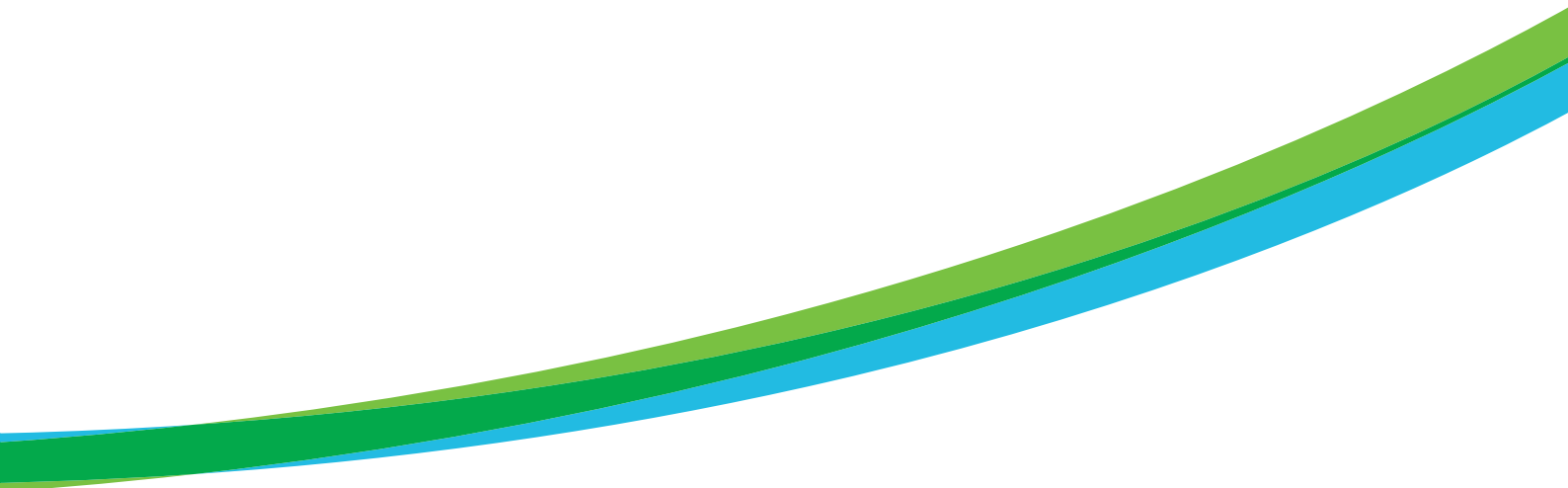
i. **A cable landing point:**

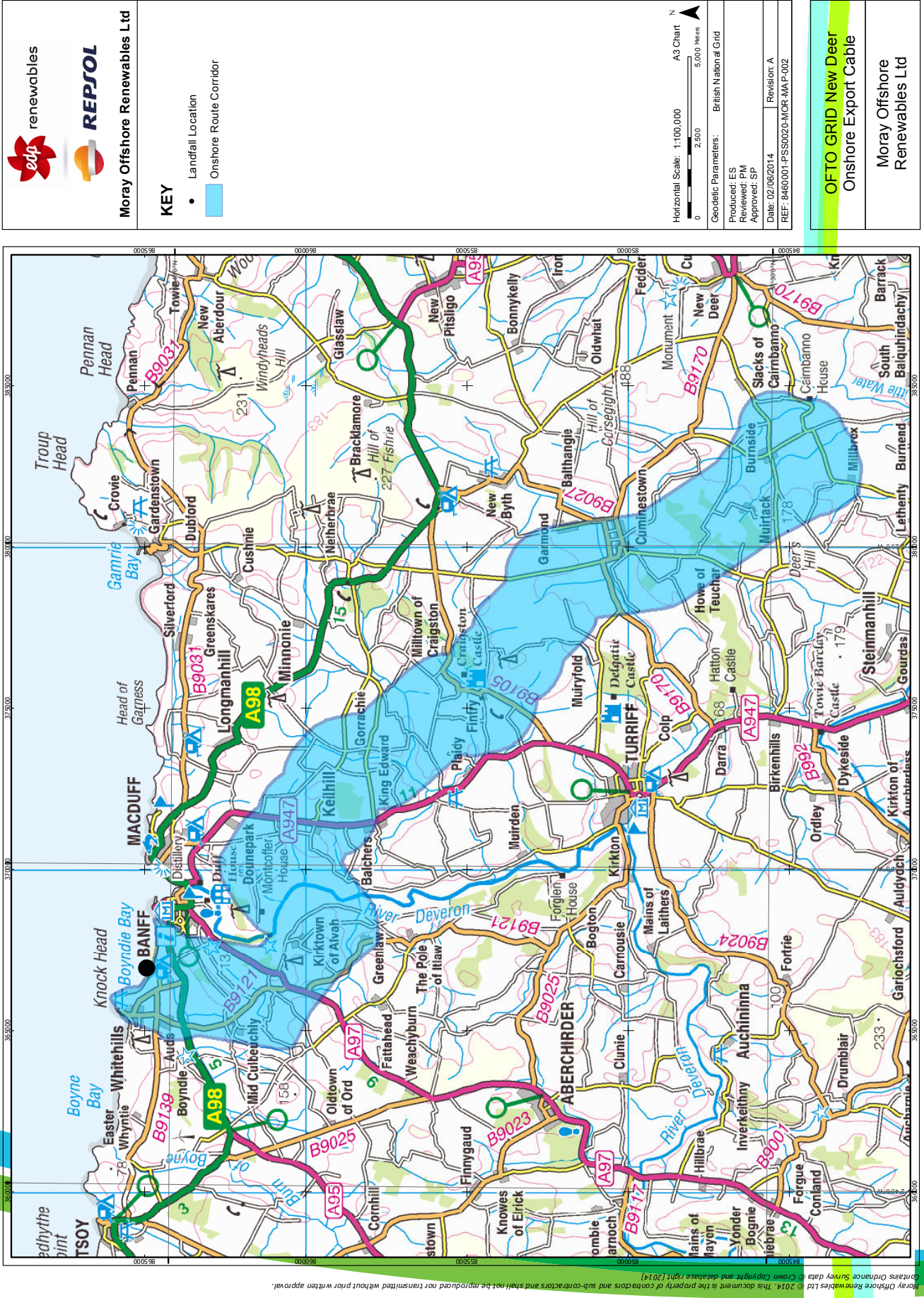
The export cable will be buried below the surface of the sea-bed, and will remain underground as it comes onshore. Temporary works will be required at a coastal site to land the cable, but all permanent infrastructure at the landing site will be below ground. In March 2014, MORL identified two potential landing sites at Sandend Bay and Inverboyndie Bay. By June 2014, MORL had identified Inverboyndie Bay as the preferred landing point as a result of offshore survey works and analysis. Sandend was therefore removed from the scope of public consultation.

ii.

An underground cable route:

The cables (which will comprise four cable circuits, each circuit containing three single core cables in a trefoil arrangement, each circuit operated at 220kV) will be routed underground to a target depth of 1 m. The cable will be installed within a maximum of four trenches each of which will be a maximum of 4 m in width (except where two circuits are co-located in the same trench in which case the trench width will be up to 6 m). These will be located within a 500 m wide corridor (for which consent is sought). The infrastructure will occupy only a small part of the cable corridor (the maximum working width will be 60 m in total). The onshore underground cable route will have a distance of ca. 33 km, and the land will be fully reinstated after the works. No overhead pylons will be required for the cable route. Map 2 details the 3km wide onshore cable route search area on which consultation was undertaken to assist in informing the selection of the 500 m cable corridor within this search area.

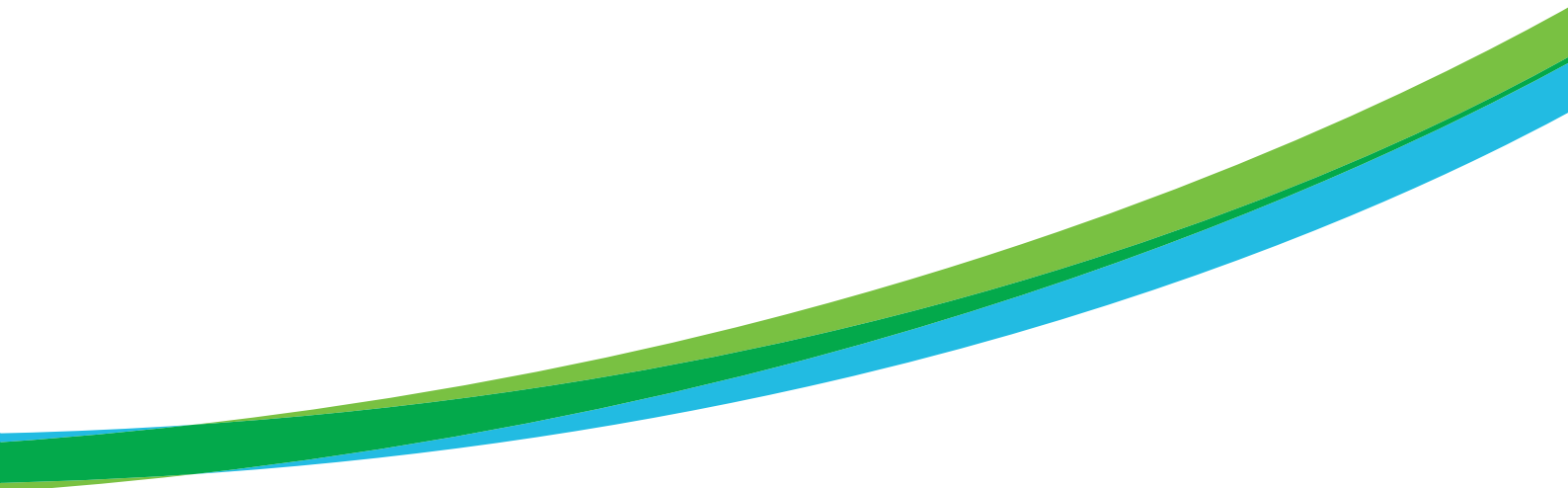





Moray Offshore Renewables Ltd © 2014. This document is the property of contractors and sub-contractors and shall not be reproduced, nor transmitted without prior written approval.
Ordnance Survey data © Crown Copyright and database right [2014]

iii. **Substations Infrastructure:**

MORL will require one AC substation, covering an area of up to approximately 270 x 135 m (approx. 9 acres) at the grid connection point to the southwest of New Deer. In order to allow the connection of the MORL wind farms to the national grid, an additional substation must be consented which will ultimately be owned by the regional transmission owner (TO) and will feed into the existing 275 kV overhead line. This substation will be up to 270 x 170 m (approx. 11.4 acres). The maximum height of infrastructure in both substations will be approximately 13 m. The onshore substation site identified by MORL allows for the co-location of MORL and the additional substation which together (allowing for a small area in between the two substations) will occupy an area no more than 10 hectares (approx. 24 acres) in size. In addition further land up to approximately 25 acres will be required for the formation of a permanent access track and landscaping. The substation requires to be adjacent to the existing 275kV overhead line. Map 3 details the broad substation search area on which consultation was undertaken to assist in informing the selection of the substation location within this search area.






Moray Offshore Renewables Ltd

KEY

— 275kv Transmission Line

Substation Search Area

Horizontal Scale: 1:12,500 A3 Chart N

0 320 640 Metres

Geodetic Parameters: British National Grid

Produced: ES

Reviewed: CM

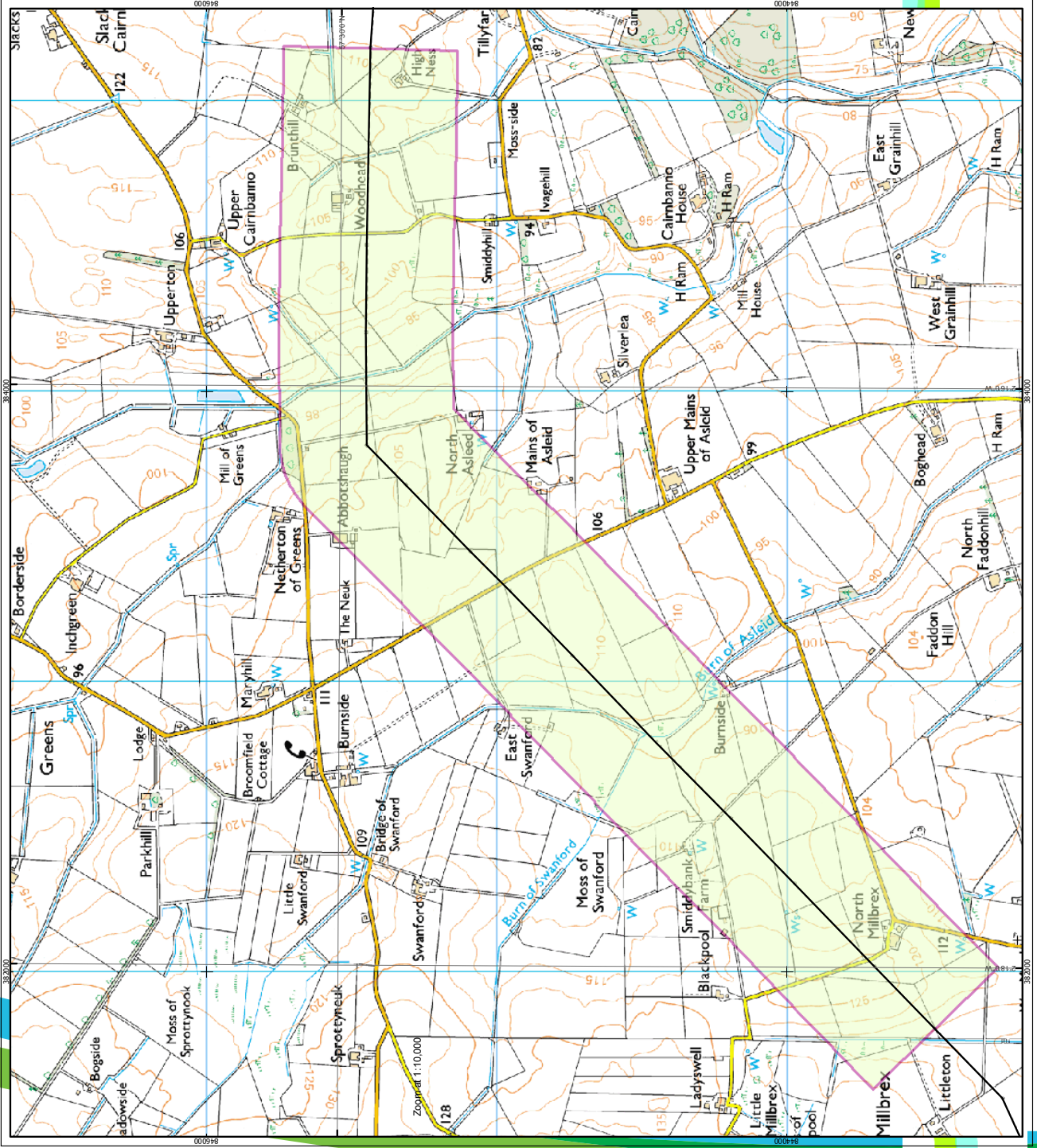
Approved: SP

Date: 02/06/2014 | Revision: A

REF: 8460001-PSS0020-MCR-MAP-001

OFTO GRID New Deer Substation Search Area

Moray Offshore Renewables Ltd



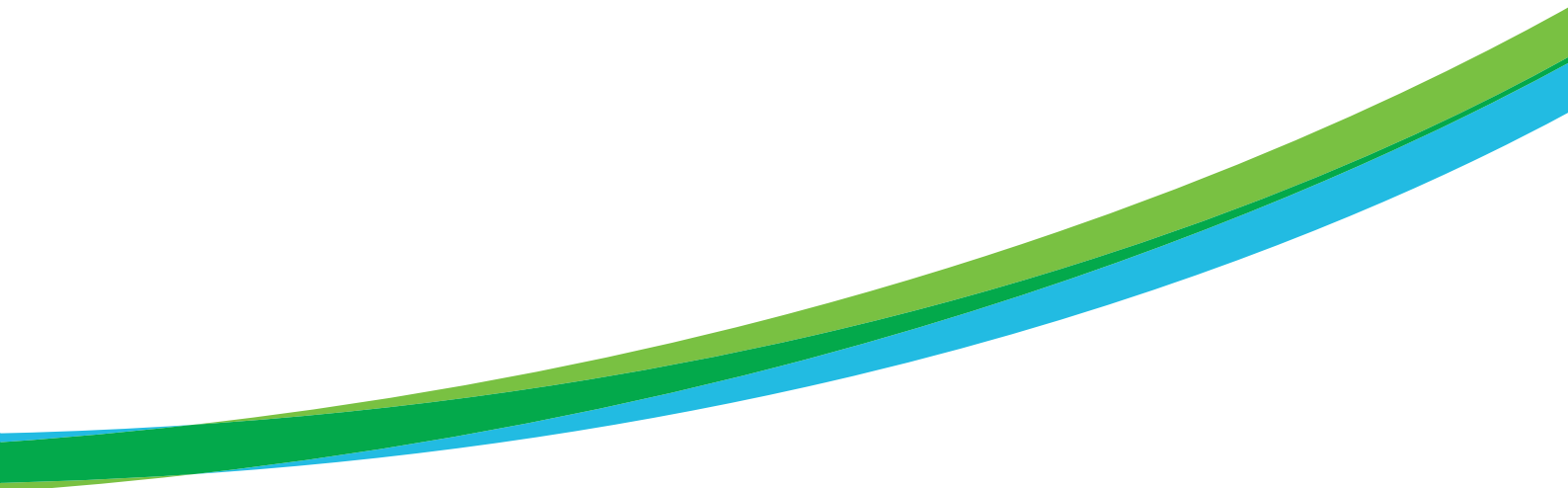
Map 3 – Substation Search Area for Consultation

Moray Offshore Renewables Ltd © 2014. This document is the property of contractors and sub-contractors and shall not be reproduced, nor transmitted without prior written approval.
 Crown copyright and database rights (2014) Ordnance Survey (License Numbers: 1350462, 1326001)

4. Aims of Pre-Application Consultation

MORL's engagement with stakeholders to date has identified considerable interest in and support for the development of offshore wind in the outer Moray Firth, and proposals have been developed against a background of positive stakeholder relationships. In order to continue to deliver high-quality engagement, the following aims for the pre-application consultation were developed:

- to ensure a good general awareness of the proposals for infrastructure works, and facilitate project development with a positive relationship with local communities
- to provide all members of the communities local to the proposed development with access to the developer and provide the opportunity to enter dialogue and record their views on the proposed development
- to enable dialogue with those stakeholders impacted upon by the proposed infrastructure works
- to initiate relationships with community councils with a geographic interest in the works
- to undertake consultation to assist informing the selection of the cable corridor within the cable search area
- to undertake consultation to assist informing the selection of the substation site and location within the substation search area
- to provide an understanding of the relationship between the proposed onshore works and the development offshore
- to ensure that Moray Offshore Renewables Limited has initiated an appropriate level of engagement with all the interested parties
- to seek the views and concerns of all interested parties so that these may be considered and if necessary, addressed in project planning
- to identify suitable mitigation measures
- to comply with relevant regulations



5. Overview of Pre-Application Consultation

Proposals for pre-application consultation were included as part of the Proposal of Application Notice to Aberdeenshire Council. Pre-application discussions were also held with Aberdeenshire Council as the relevant local planning authority. These discussions are summarised at section 9 below.

Differentiation between the pre-application consultation, and the formal consultation procedure associated with the planning application was included in all advertisements, and detailed in the public information brochure, ensuring that respondents and potential respondents were aware that an opportunity to respond to the planning authority's consultation would be available in the usual way, after the planning application was submitted.

The Pre-Application Consultation consisted of the following elements:

i. **Public Exhibitions**

A series of three public exhibitions were held at three locations, with the following common features:

- Open from 12.00pm until 8.00pm. This is intended to provide accessibility for those who can attend during a lunch-hour, as well as provision for those who are only able to attend after the end of the working day.
- A story-board display, providing location and infrastructure information for the three consented wind farms (Telford, Stevenson and MacColl) and the modified TI. (See Annex 1)
- Eight page glossy public information brochure made available to the public, including opinion survey form, and details of dedicated consultation email address. (See Annex 2)

- Staffed by members of the MORL project team. These staff were representatives from the Consenting and Engineering divisions. Use of project staff rather than PR consultancy staff enables direct communication between stakeholders and the project, as well as providing the most up-to-date information about the proposed infrastructure and its relationship with other aspects of the modified Project.
- Representatives from MORL's land agent, CKD Galbraith were available at each exhibition in order to discuss issues arising directly, or to make future appointments to do so.
- Locations and dates:

The Village Hall, New Deer, Tues 10 June
The Fife Lodge Hotel, Banff, Wed 11 June
Station Hotel, Portsoy, Thurs 12 June

ii. **Community Council Notification**

As per minimum statutory requirements, the following Community Councils were provided with copies of the proposal of application notice on 31 March 2014:

Fordyce and Sandend Community Council
Portsoy and District Community Council
Whitehills and District Community Council
Banff and Macduff Community Council
Alvah and Forglen Community Council
King Edward and Gamrie Community Council
Turrieff and District Community Council
Deer Community Council
Fyfie, Rothie & Monquhitter Community Council

In order to provide better accessibility to the proposals, a detailed cover-letter was provided, to secretary/convenor of each community council, offering direct discussion with MORL's communication manager if desired. This notification was sent by email as well as postal delivery of paper copy. A copy of this letter is available at Annex 3.

In addition, a further reminder was sent to each Community Council one week in advance of the consultation events taking place, including the public consultation brochure. Community Councils have been offered additional direct meetings with MORL to discuss the proposals, if there is local demand.

iii. **Newspaper Advertisements**

To provide improved notification to the general public of the consultation events, the following strategies were employed to improve upon the statutory minimum requirements:

- In order to provide better advance notice, and to increase likelihood of it being read, the advert was run for two weeks prior to the events instead of one.
- In order to improve likelihood of the advertisement being noticed by the readership, a full-colour advert was graphically-designed, in place of a standard plain-text notice.
- In order to improve likelihood of the advertisement being noticed by the readership a large, quarter-page advert was placed instead of a standard plain-text notice.

The advertisements were placed in the following publications:

Banffshire Journal:	27 May & 3 June
Buchan Advertiser:	27 May & 3 June
Buchan Observer:	27 May & 3 June
Turriff Observer:	30 May & 6 June

An example of the newspaper advertisement is included at Annex 4.

iv. **Local Advertisements**

Local noticeboards in shops, village halls, etc. in the villages and towns adjacent to the cable route and substations were utilised for placing of a colour A4 advertisement, an example of which is included Annex 5.

v. **Direct Neighbourhood Notification**

Twenty households within the substations search area (map 3) were provided with a hand-delivered notification of the public exhibitions.

An example of such a letter is included at Annex 6.

vi. **Notification of Elected Members**

Local authority members in the following wards were provided with a copy of the public consultation brochure by email:

Banff & District
Troup
Fraserburgh & District
Central Buchan
Peterhead North & Rattray
Peterhead South & Cruden
Ellon & District
Mid-Formartine
Turriff & District

Relevant members of the Scottish Parliament (Banff and Buchan Coast, & Aberdeenshire East constituencies, and the NE Regional List), UK parliament (Banff & Buchan Constituency), and European Parliament (Scotland) were provided with similar information.

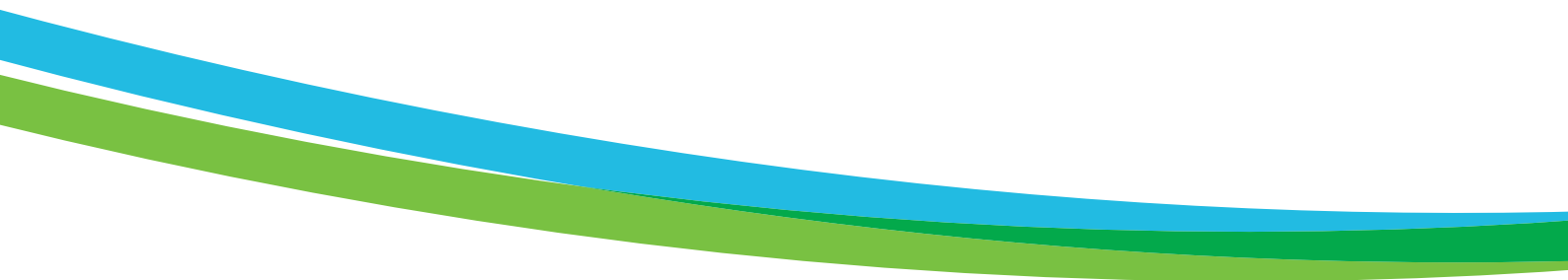
vii. **Editorial Coverage In Local & National Press**

In order to provide broad public access to information about the proposed infrastructure, reporters from the local media were provided with a briefing by the MORL Communications Manager. The aim was to have a news article run in the front section of the local press, which would provide greater visibility and awareness in addition to the newspaper advertisements submitted by MORL.

The following newspapers ran articles:

Banffshire Journal – 17 June 2014
Press & Journal – 11 June 2014

Copies of these articles are included at Annex 7.



6. Attendance At Public Exhibitions

New Deer

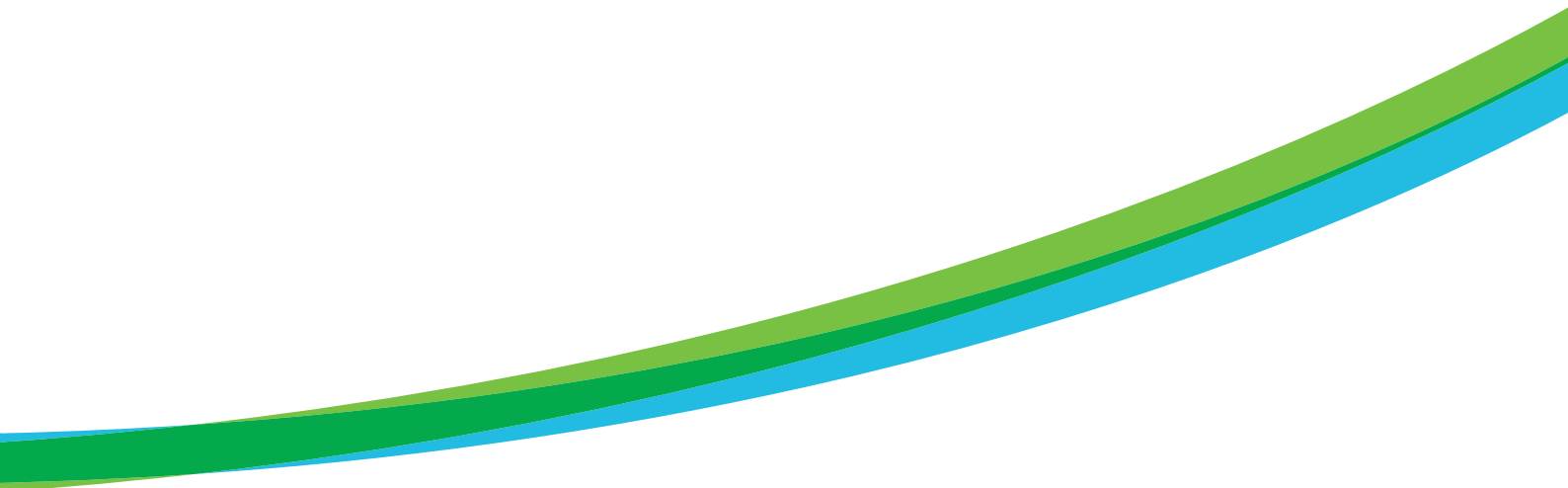
81 members of the public attended the exhibition, including one elected member of Aberdeenshire Council who made himself known as such to MORL staff. A large proportion of those attending sought meetings with MORL's land agent, CKD Galbraith, in order to discuss matters directly relating to their own property. This allowed dialogue to be opened directly between individual members of the community and MORL on specific and individual issues.

Banff

30 members of the public attended the exhibition including representatives of Banff, Turriff and King Edward and Gamrie Community Councils who made themselves known as such to MORL staff, and two members of Aberdeenshire Council who made themselves known as such to MORL staff.

Portsoy

24 members of the public attended the exhibition including a representative of Fordyce Community Council, who made himself known as such to MORL staff.



7. Public Response To Consultation

In total, 135 members of the public attended the public exhibitions, with the New Deer (substation location) attracting the most visitors. All of those who attended were provided with at least one copy of the public information brochure, and their attention was drawn to the consultation form (a collection box for these forms was included at the exhibition) and to the dedicated consultation email address.

Despite the strong attendance and the distribution of over 150 public information brochures and feedback forms, only 1 reply was made using either email or the consultation form. This reply acknowledged the requirement for the infrastructure and drew attention to the need for sensitivity in siting and consideration of screening, stating : 'Developments of this nature are vital for this area and the country. Sensitivity in siting and screening would be helpful'. MORL has taken consideration of amenity in selecting a substation location, and has developed proposals for landscaping (see below).

At the events themselves many individual queries and concerns were satisfied through the provision of information, particularly relating to reassurances that the cable would be underground, and could not be replaced by an overhead line. When assurances such as this had been secured, many of those attending did not wish to take the time to fill in a consultation form.

Many of those attending the event sought a one-to-one meeting in confidence with MORL's land agent, CKD Galbraith in order to address issues of concern which were specific and local to them, and preferred to use this contact as the initiation of dialogue, indicating that having made this contact they did not feel it was necessary to use the consultation form to give feedback.

The following table gives an indication of the types of query which were raised in discussion with MORL representatives, and a summary of the responses given.

Developer Feedback to Questions

Question	Response
Why underground instead of overhead?/ Can you guarantee it will not be changed to an overhead line?	To minimise impact and enable consent within timescales./ Yes a separate consenting procedure would be required for overhead line. Overhead line is not being applied for.
Will the substation create noise?	Yes, but this has been extensively studied by MORL and no significant effects from substation noise are predicted. The use of GIS technology at the substations makes noise easier to mitigate due to the fact that the principal switchgear will be enclosed within buildings which allow for more robust sound insulation techniques to be employed.
How deep will the cable be buried?	To a target depth of 1m. Deeper if technical circumstances require.
Will there be turbines on the cable route?	No
How will the cable be installed?	Trenching works & directional drilling where appropriate.
What impact will there be on local access?	MORL will make a site selection to minimise impacts. MORL has completed a traffic and transport assessment aimed at reducing effects from construction operations.
What steps will be taken to preserve views from properties/ protect landscape	MORL will give consideration to amenity during site selection, and will develop proposals for landscaping & screening.
Will the beach require to be closed?	Any closures will be localised and temporary and undertaken following consultation to avoid high-season disruption

Question	Response
Will EMF present a danger?	The proposed modified TI infrastructure will be installed adhering to national guidelines. The ES for the modified TI will address this issue in detail.
Will pylons be needed for river crossings?	No – cables will be undergrounded/directionally drilled at river crossings.
Will there be a substation at the landing point?	No – all infrastructure at the landfall location will be underground. Access to a jointing pit may be provided by a manhole-cover on the surface.
When will installation commence/be complete?	An indicative construction programme has been included in the ES which show construction for the TI taking place in two discrete phases between 2016 and 2021.
What is the justification for moving away from Peterhead? How can a new development in a rural area be justified?	MORL is required to work with the regional transmission owner and system operator to deliver the most economic and efficient grid connection, and the new connection point is the result of an industry process (CION) which seeks to deliver this.
Will the power be used locally or exported to England?	Power will be made available to all consumers via the National Grid.
Will the application include detail on how agricultural land will be restored?	MORL will be required to deliver the commitments it makes in its application including land restoration required during the installation and maintenance works.
Does the Government pay for the offshore windfarm? How much do we pay through our bills?	The development will be financed by MORL. Electricity Market Reform (EMR) makes provision for the incentivisation of investment in new generation infrastructure through the Contract for Difference scheme, which is ultimately funded through consumer bills.
Will there be an opportunity for local firms to contract the work required?	Yes – MORL has undertaken significant and meaningful engagement work in the local economy to make firms aware of the opportunities and to understand the capabilities within Scotland as a whole. For example, in May 2014, MORL undertook three supply chain events around the Moray Firth in order to make Scottish and Highland firms aware of the opportunities that the MORL project would bring. MORL will conduct a further supply chain event in Aberdeenshire specifically for the onshore works in summer 2014.

8. Project Development Following Consultation

i. Substation Site Selection

Following discussion with a large number of residents and land-owners within the substation search area and beyond, representations were received regarding the need to maintain good traffic access in the area throughout construction and operational works. Further representations were made regarding proximity and effect on amenity. MORL selected a location within the search area which seeks to address these concerns.

The proposed site was selected for the following reasons:

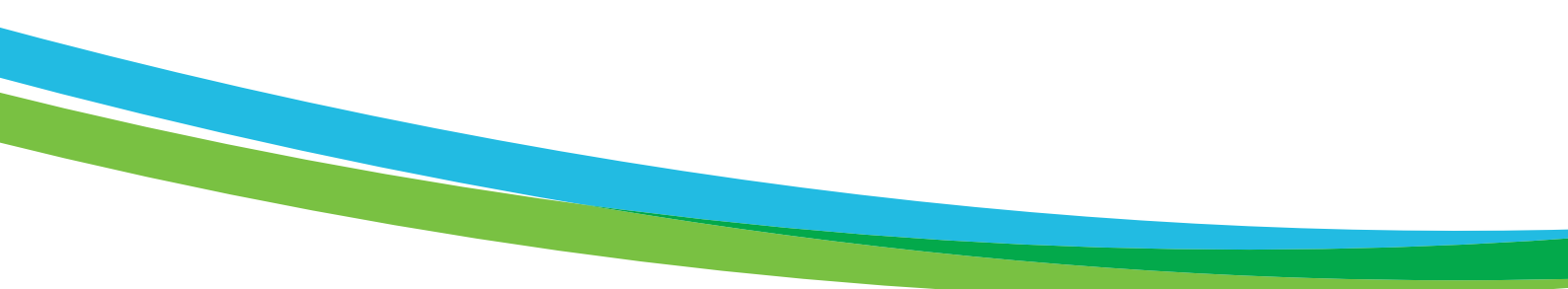
- Distance from residential properties
- Proximity to existing 275kV line
- Existing Screening
- Space for additional screening works
- Ground, slope & gradient conditions
- Accessibility
- Landowner discussions

ii. Landscaping & Screening

In order to further address concerns regarding amenity, MORL has developed proposals for landscaping and screening. Four main concepts were developed which took into account a number of viewpoints in the area of varying sensitivity. The landscaping and screening concepts were developed with an objective of minimising the visual impact from sensitive receptors based on a review of topography, existing screening and conversations with area landowners. Information on these proposals is included in the Environmental Statement at Volume 4, figure 5-3.28.

iii. Electro-Magnetic Fields

In order to address concerns which were raised by three attendees at public exhibitions, MORL has included a section within the Environmental Statement on Electro-Magnetic Fields (EMF). (See Environmental Statement Chapter 2.2 and Technical Appendix 2.2A – Electromagnetic Field Report)



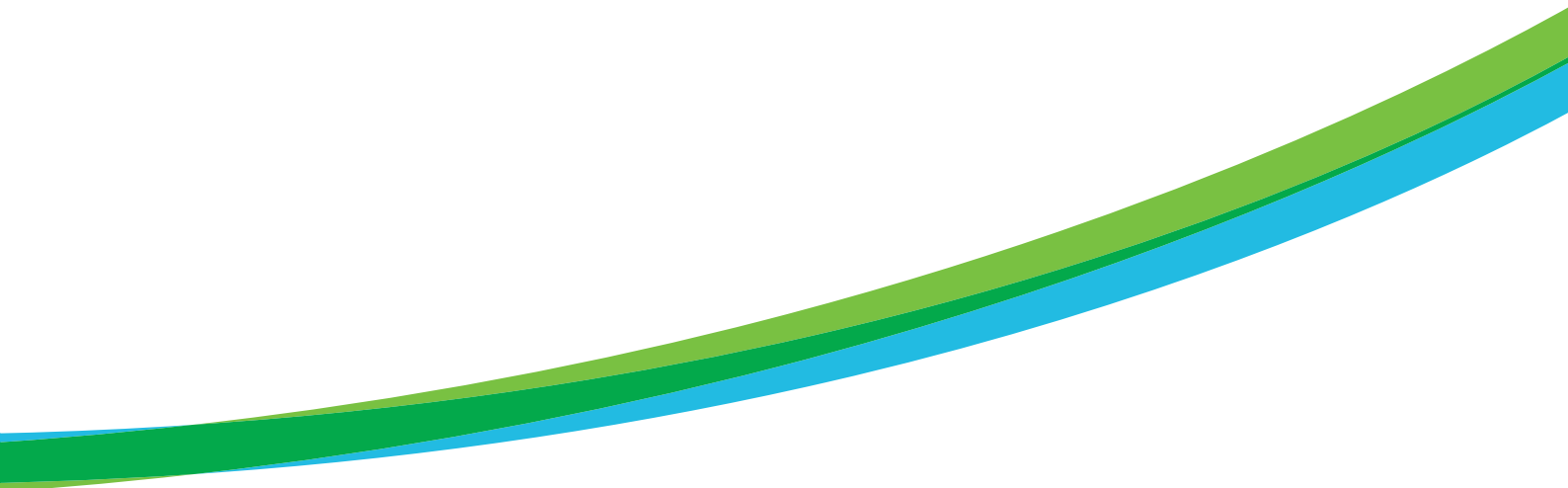
9. Pre Application Consultation With Aberdeenshire Council

Section 35 B of the 1997 Town and Country Planning (Scotland) Act 1997 requires that the applicant should give the local planning authority 12 weeks notice that an application is to be submitted. A copy of this notice and the local planning authority's response is included at Annex 8.

A meeting was held on 5 March 2014 with appropriate representatives of Aberdeenshire Council. The meeting was held to discuss MORL's modified proposal (in relation to both (1) the change in location from Peterhead to New Deer and the consequential changes to landfall and cable route locations and (2) the change from AC to DC transmission infrastructure) and the MORL development programme. Relevant national and local planning policy was highlighted together with the requirement for an Environmental Impact Assessment (EIA). Likely key considerations for local residents were highlighted for consideration within the applications including noise and visual impacts. MORL has produced a detailed EIA of these issues as well as others in the Environmental Statement (ES) which accompanies this application and addresses these issues. The Updated Planning Statement which accompanies this application addresses the current national and local planning policies engaged by this development proposal.

A further meeting on 9 May 2014 was held at the Aberdeenshire Council offices, Inverurie. The meeting was arranged to discuss a draft Processing Agreement, notification requirements for the planning application, development of embedded mitigation proposals including landscaping and site selection criteria and MORL's development programme. A processing agreement was entered into on 23 May 2014. The ES sets out in Chapter 2.1 the alternatives which were assessed as part of the development proposals and the selection criteria used in that process. Each impact assessment chapter in the ES sets out the mitigation which has been embedded into the design of the route where relevant.

A final meeting on 16 May was held to review application progress at the Aberdeenshire Council offices, Inverurie. In addition, specific discussion regarding the landscape and visual impact assessment for MORL's onshore works took place. The ES at Chapter 5.3 sets out the detail of this consultation and how it has been addressed in the landscape and visual assessment.



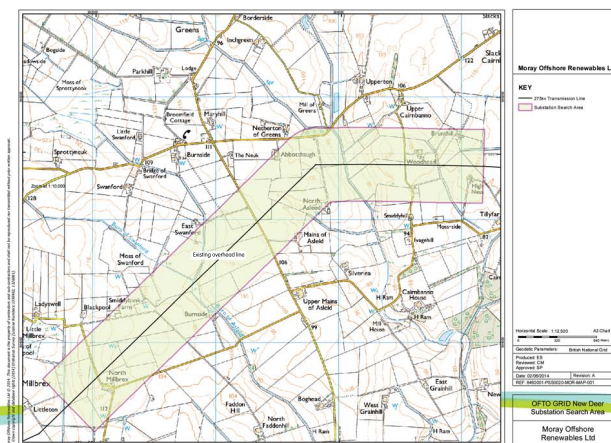
Annex 1 - Public Exhibition Story Boards



Substation Location

As described previously, two substations will be required and these will be co-located on a single site. Both will be of a similar size, and in total will require approximately 10 hectares (approx. 24 acres).

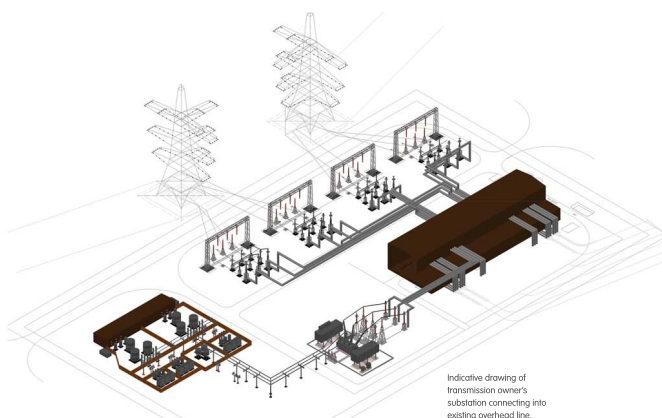
The site for the substations requires to be adjacent to the existing 275kV overhead line. The map below shows the broad search area within which the substation site will be located. The site will be selected on the basis of environmental survey and research work, consideration of technical requirements and constraints and consultation. The application to the planning authority will detail the proposed substation site.



Substation Infrastructure

At an early stage, following environmental and technical assessments, MORL took the decision to install modern Gas Insulated Switchgear (GIS) as opposed to Air Insulated Switchgear (AIS) at both substations.

As well as reducing the footprint significantly, GIS is largely housed within a building whereas AIS would be entirely external and therefore would comprise a greater visual impact. AIS is a more commonly used type of substation, and can be seen nearby at locations such as Kintore and Rothienorman. GIS, on the other hand, has a smaller footprint, is more contained and allows for greater levels of visual and noise screening.



Indicative drawing of transmission owner's substation connecting into existing overhead line.



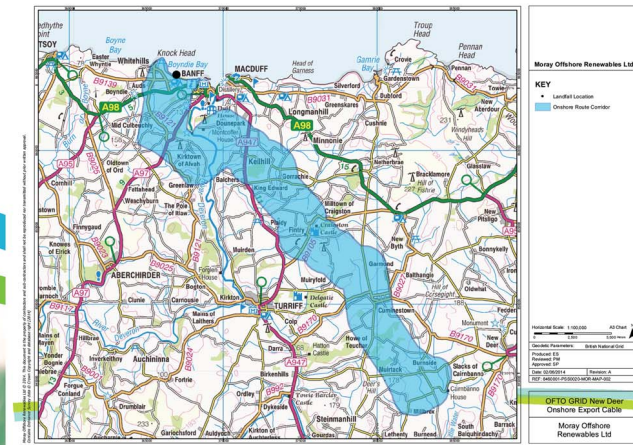
Underground Cable Corridor

The cable search area is shown on the map below. This is the broad area which is being considered for the location of a 1km wide cable corridor for which consent will be sought. The infrastructure will occupy only a small part of this corridor, and will be installed underground in trenches.

Consent for a corridor of 1km width will be sought in order to allow for the installation to be optimised according to local conditions. The entirety of the cable route will be buried at least 1m (3') below ground, and the land will be fully reinstated after the cable installation work has been undertaken.

The corridor will be planned and selected within the search area, the route being selected on the basis of environmental survey and research work, consideration of technical requirements, constraints and consultation. The application to the planning authority will detail the proposed cable corridor.

Your views are sought on the location of the cable corridor within the search area indicated on the map.



Environmental Studies

MORL is undertaking a series of environmental baseline surveys and studies. These include:

- Wintering & breeding bird surveys
- Bats, badgers & water-vole surveys
- Habitat surveys
- Noise surveys
- Fresh water ecology surveys
- Hydrology
- Archaeology
- Landscape & visual effects
- Traffic & transport
- Socioeconomics

The environmental statement will set out in detail the baseline environment informed by these surveys and an Environmental Impact Assessment of the proposals will be carried out using the information obtained.

This information will be used to further develop the proposals prior to submission of the application in order to ensure that the environmental effects of the proposals are minimised. Comments are invited on these studies.



Annex 2 - Public Information Brochure

moray offshore renewables ltd

Onshore Transmission Infrastructure Public Consultation Document

Moray Offshore Renewables Limited,
40 Princes Street,
EDINBURGH.
EH2 2BY

Alternatively, please email:
info@morayoffshorerenewables.co.uk

www.morayoffshorerenewables.com



moray offshore renewables ltd



Introduction



In 2010, Moray Offshore Renewables Ltd (MORL) announced proposals to harness the power of the wind in the outer Moray Firth to deliver a world-leading new source of low-carbon electricity, improving the UK's security of energy supply, insulating consumers against rising oil and gas prices, and reducing greenhouse gas emissions.

This project marks a step-change in the deployment of renewable energy. Until now, most offshore wind deployment has been in relatively shallow water, close to shore. MORL's proposals are for deployment in deeper waters (up to 50m) further from shore, allowing access to greater space for development and, importantly, access to an excellent wind resource.

Over the past four years, we have worked hard to develop these proposals, investing more than £30m in research, surveys, modelling and engineering work. In March of this year the Scottish Government granted MORL consent for the construction of 1,116 MW of offshore wind generation in the Outer Moray Firth.

In order to deliver the electricity generated in the Moray Firth to the homes and businesses onshore where it is required, MORL has been offered a connection point to the existing national electricity transmission grid southwest of New Deer in Aberdeenshire.

This will require a cable landing site on the coast, an underground cable route, and new electricity substations. This document outlines proposals for this transmission infrastructure, and I would like to invite you to submit your views and comments either by using the form at the back of this booklet, or by emailing info@morayoffshorerenewables.co.uk

Dan Finch,
Project Director.

Offshore Infrastructure - Telford, Stevenson and MacColl Windfarms

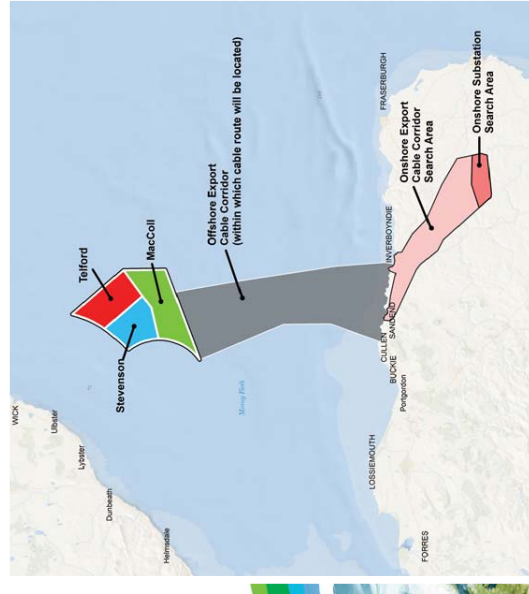
In March 2014, the Scottish Government granted MORL consent to construct and operate three offshore wind farms, Telford, Stevenson and MacColl in the Outer Moray Firth. The consents permit:

- Total installed generation capacity: 1,116 MW
- Total Number of turbines: up to 62 turbines with an installed capacity of a maximum of 372 MW on each of the three sites
- Wind turbines with capacity of 6MW to 8MW
- Maximum turbine blade-tip height - 204m (669 feet)
- Total Area - 295km²
- Minimum distance from shore - 22km (13.5 miles)

On conservative wind estimates, the projected development is expected to be able to supply the equivalent electricity needs to 688 000 UK households on the basis of average annual electricity consumption.

Peak employment during construction is projected to be up to 2,400 jobs in Scotland. During the operational lifetime of the project, up to 330 Scottish jobs will be supported by operation and maintenance activities.

The offshore transmission infrastructure comprising offshore substations, export cables and landfall point requires a marine licence consent from Marine Scotland and is subject to a separate consenting process to the onshore consents which are the subject of this public consultation.



Onshore Transmission Infrastructure Public Consultation Document

Onshore Transmission Infrastructure

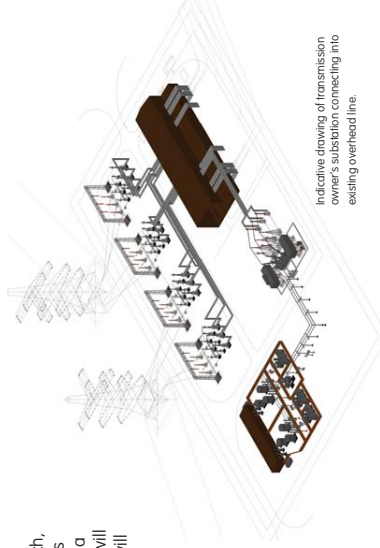
The onshore transmission infrastructure includes all of the works required to get the power from the cable landing point on the foreshore to the wires of the existing overhead electricity transmission grid, south of New Deer. This work requires planning consent from Aberdeenshire Council, and is the subject of this consultation. It includes:

- A cable landing point: the export cable from the offshore substation platforms (which will be located close to the wind farms) will be buried below the sea-bed, and will remain underground as it comes onshore. Temporary works will be required at a coastal site to land the cable, but all permanent infrastructure at the landing site will be below ground. MORL has identified Inverboyndie beach as a preferred landing point.

- An underground cable route: the cable (which will comprise up to four cable circuits, each circuit containing three single core cables in a trefoil arrangement, each circuit operated at 220kV) will be routed underground at a depth of ca. 1m (3') from the landing point to the proposed substation. The cable trench arrangements have not yet been finalised, but are likely either to comprise four trenches, max. 4m (12') wide with one cable circuit in each, or two trenches max. 6m (18') wide with two cable circuits in each. The onshore underground cable route will have a distance of approximately 34km (21miles), and the land will be fully reinstated after the works. No overhead pylons will be required for the cable route.

- Substations: MORL will require one AC substation, covering an area of up to approximately 280 x 180 m (approx. 12.5 acres) at the grid connection point to the southwest of New Deer. In order to allow the connection of the MORL windfarms to the national grid, an additional substation must be consented which will ultimately be owned by the regional transmission owner and will feed into the existing 275 kV overhead line. This substation will be up to 290 x 170 m (approx. 12 acres). The maximum height of infrastructure in both substations will be approximately 13m. The onshore substation site identified by MORL allows for the co-location of MORL and the additional substation which together will occupy an area no more than 10 hectares (approx. 24 acres) in size, and will include a permanent access track.

During construction, a number of temporary construction compounds, storage facilities, laydown areas and access and haulage tracks will be required for the onshore cable installation work and construction of the onshore electrical infrastructure. These areas will be reinstated.



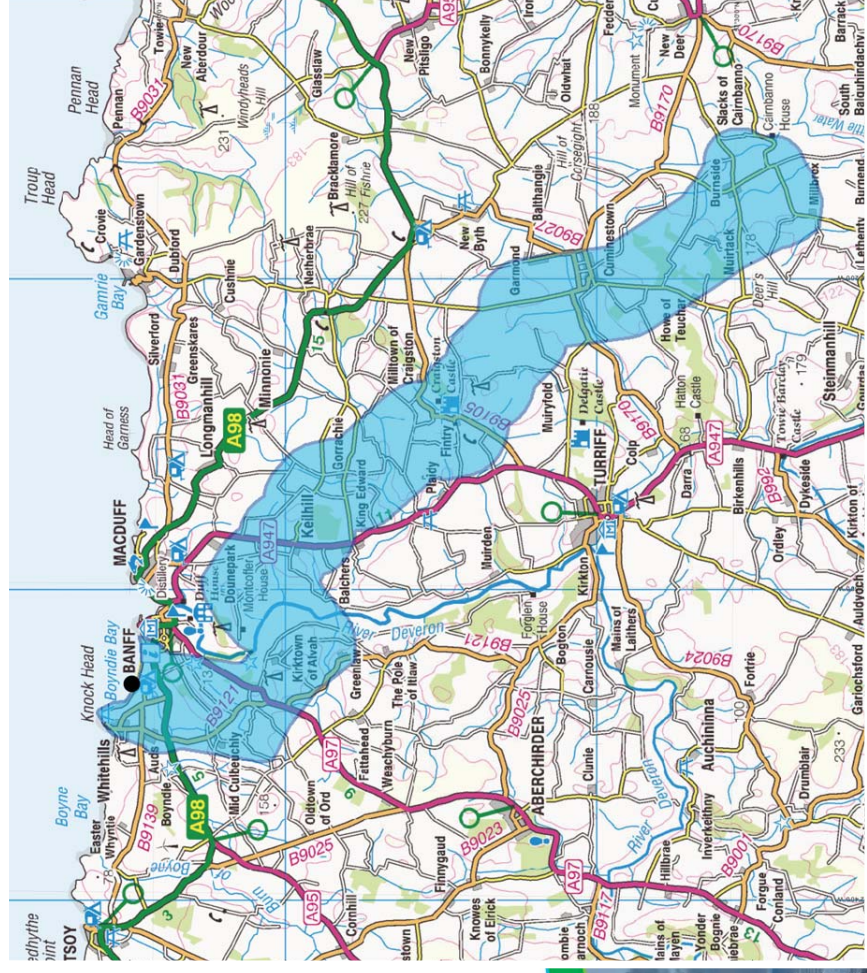
Indicative drawing of transmission owner's substation connecting into existing overhead line.

Location Of Cable Route

The map below shows the cable corridor search area. This is the broad area which is being considered for the location of a 1km wide cable corridor for which consent will be sought. The infrastructure will occupy only a small part of this corridor, and will be installed underground in trenches as described on the previous page. Consent for a corridor of 1km width will be sought in order to allow for the installation to be optimised according to local conditions.

The entirety of the cable route will be buried at least 1m (3') below ground, and the land will be fully reinstated after the cable installation work has been undertaken.

Cable Corridor search area



The corridor will be planned and selected within the search area, the route being selected on the basis of environmental survey and research work, consideration of technical requirements and constraints and consultation. The application to the planning authority will detail the proposed cable corridor.

Your views are sought on the location of the cable corridor within the search area indicated on the map.



Your Comments

The site for the substations requires to be adjacent to the existing 275kV overhead line. The map below shows the broad search area within which the substation site will be located (marked in green).

The site will be selected on the basis of environmental survey and research work, consideration of technical requirements, constraints and consultation. The application to the planning authority will detail the proposed substation site. Your views are sought on the location of the co-located, substations site within the search area indicated on the map.

- Any other comments :

Address:

Email:

Please note that all comments must be sent to Moray Offshore Renewables Ltd, and are not representations to Aberdeenshire Council. An opportunity to make representations to the Council will exist when a formal application is made.



Annex 3 - Community Council Letter



To the following Community Councils:

Alvah & Forglen CC, Banff & MacDuff CC, Fordyce & Sandend CC, Whitehills & District CC, King Edward & Gamrie CC, Portsy & District CC, Deer CC, Fyfie, Rothie & Monquhitter CC, Turriff & District CC

31 March 2014

Dear Secretary/Chairperson

Pre-Application Consultation - Proposed Onshore Transmission Works

I write to advise you of a forthcoming public consultation relating to the installation of a proposed underground electric cable and a new electricity substation associated with the development of offshore wind energy in the Moray Firth. The proposed works and associated consultation are detailed in the copy of the enclosed Proposal of Application Notice, however I wanted to take the opportunity to write to you to provide additional information about the context and the details of the proposals.

Moray Offshore Renewables Ltd (MORL) has been granted consent by the Scottish Government to construct and operate three offshore wind farms in the Outer Moray Firth, with a total generating capacity of 1116MW (roughly equivalent to that of a conventional thermal powerstation).

The project provides considerable opportunity to reduce greenhouse gas emissions, improve security of the electricity supply, and insulate consumers from the rising costs of gas, as well as presenting new opportunities to the local economy.

In order to deliver that power to consumers, Scottish Hydro Electric Transmission (SHE-T) and National Grid (NG) have determined that it should be connected to the existing transmission grid immediately south of New Deer. In order to expedite and simplify development, MORL is seeking consent from Aberdeenshire Council for the following proposed infrastructure works:

- i. **A cable landing point:** the export cable will be buried below the surface of the sea-bed, and will remain underground as it comes onshore. Temporary works will be required at a coastal site to land the cable, but all permanent infrastructure at the landing site will be below ground. MORL has identified two potential new landing sites at Sandend Bay and Inverboyndie Bay
- ii. **An underground cable route:** the cable (which will comprise four cable circuits, each circuit containing three single core cables in a trefoil arrangement, each circuit operated at 220kV) will be routed underground at a depth of ca. 1m (3 ¼'). The cable will be installed within trenches, and these will be located within a 1km wide corridor (for which consent is sought). The infrastructure will occupy only a small part of the corridor (a width of 1km is sought to allow for the installation to be optimized according to local considerations), and the corridor will lie within the wider search area indicated on the map. The onshore underground cable route will have a



distance of ca 34-44km (21-28 miles), and the land will be fully reinstated after the works. No overhead pylons will be required for the cable route.

- iii. **A MORL substation:** in order to connect the offshore wind farms to the electricity transmission grid, MORL will require to build a new substation specifically to serve the project, allowing access to and control of the power generated. This substation will include external high-voltage electrical apparatus and buildings for housing equipment. It will be surrounded by a ca. 3m (9') palisade perimeter fence. Depending on the type of technology used, the area required for the substation will be between 2.9 and 5.2 hectares (7 and 12 acres).
- iv. **A SHE-T substation:** in order to allow the connection of MORL to the grid, SHE-T require to construct a new substation connected to the grid by the existing 275kV overhead lines at New Deer. This substation will be of a similar type to those already operated by SHE-T, and will include external high voltage equipment, buildings for housing equipment, and will be surrounded by a 3m (9') perimeter fence. Depending on the type of technology used, the area required for the substation will be between 2.8 and 7.3 hectares (7 and 17 acres). The MORL and SHE-T substations will be located adjacent to each other.

The enclosed map details the 'search area' for the cable route and the substations. The area marked on the map is much larger than that required by the infrastructure, with the intention of allowing the best cable corridor and substation location to be selected. The forthcoming consultation is part of that selection process.

Public exhibitions will be held at the following locations:

- The Village Hall, New Deer, Tues 10 June, 12pm-8pm
- The Fife Lodge Hotel, Banff, Wed 11 June, 12pm-8pm
- Station Hotel, Portsoy, Thurs 12 June, 12pm-8pm

MORL staff will be available at these exhibitions to discuss the proposals, and to provide additional information and literature. Comment about these proposals may be made at the events, or to the Consents Manager, MORL, 40 Princes St, Edinburgh. Note that comments made through this consultation do not constitute representations to the planning authority. There will be an opportunity to make representations to the planning authority in the usual way when MORL submits the application to Aberdeenshire Council.

The events will be advertised in the local press in the coming weeks, and I will send out copies of the literature available at the public exhibition in May. If you would like to discuss this matter further, please do not hesitate to contact me: craig.milroy@edpr.com, tel. 0131 556 7602

Yours sincerely



Craig Milroy
Communications Manager, Moray Offshore Renewables Ltd

Annex 4 - Example Newspaper Advertisement

The Advertiser, June 6, 2014 17



Taking to the water: The Guides had great fun at Fordell Firs and enjoyed a spot of kayaking.

Turriff Guides take on the challenge

GUIDES and Rangers from Turriff joined over 650 Guides and Senior Section members, aged 10 to 19, for an action-packed day at Fordell Firs, Fife, on Saturday, May 24.

Adventure 2014 saw girls take over the venue for a day of fun and exciting outdoor activities.

Girlguiding Scotland is delighted to have, with the help of Cashback for Communities funding, delivered affordable adventure events, at four different locations across Scotland, to over 1700 girls and young women who may not otherwise have had this opportunity.

Adventure 2014 enabled the Guides and Senior Section members to challenge themselves, learn new skills and try out new activities.

These included abseiling, archery, a challenge course, climbing, Jacob's ladder, king swing, caving, sailing, paddle boarding, kayaking, mountain biking, pioneering, and many more.

District commissioner Mabel Webster said: "This has been an amazing event and the girls had a great time meeting new friends, and learning a few new skills and getting the opportunity to try out some very adventurous things they'd never tried before."

During the weekend, a total of 1700 girls and young women took part in Adventure 2014 at Fordell Firs, Netherurd Activity Centre (Scottish Borders), Galloway Activity Centre (Kirkcudbrightshire) and Fairburn Activity Centre (Ross-shire).

For more information about how to join Girlguiding Scotland – the leading charity for girls and young women in Scotland – go to www.girlguidingscotland.org.uk.

● In the meantime, Turriff's Guide unit are currently on the lookout for new leaders and helpers to start after the Summer break and attend on a weekly basis.

Anyone interested is asked to contact the group at the BP Centre.



Time to climb: As part of their activity day, the Guides also attempted to scale the heights of the Adventure Park apparatus.



To enquire about purchasing copies of photographs featured in the Advertiser call
(01888) 563589

Looking for Something Different & Personal . .



Full Engraving Service Available On Site

Now Engraving Glass, Pens, Inside Rings and Jewellery

Also Personalisation of Leather Goods

Products include – Salvers, Tankards, Hip Flasks, Quaichs and more...

Turriff Tackle & Trophies
01888 562428

www.fishingtheveron.co.uk

6 Castle Street • Turriff • AB53 4BJ

An exhibition for all tastes

A SELECTION of quality paintings to suit all tastes, from simple pen and ink sketches, oils, acrylics, water colours, modern art and embroideries, were on display at the Cuminstown Art Group Exhibition 2014, which was held during the weekend of May 23 to May 25.

This year, many craft items were included such as turned wooden items, jewellery, and handmade cards to name just a few.

The Monquhitter Crafty Quines staged a colourful

display of a selection of quality crafts, both traditional and new.

Over a dozen paintings were sold, which was a bonus, and some of the more unusual items on display, such as the hobby horses, caught the imagination of the visitors.

The group welcomed the support of many visitors from all over North-east Aberdeenshire, and member Kathy Balston said: "We thank everyone for their help and support, including a huge selection of delicious homebakes made by the members, which always makes this exhibition so special."



On display: At last weekend's Cuminstown Art Group exhibition, president Lorna Milne (left) and member Kathy Balston showed off a painting of a sunset on the River Dee which had been created by fellow member George Thomson. Photograph by George Murdoch






MORAY

OFFSHORE RENEWABLES

Public Consultation Exhibitions – Transmission Infrastructure



In March, Moray Offshore Renewables was granted consent to develop 1,116MW of offshore wind generation infrastructure in the Outer Moray Firth. In order to get the power onshore so that it can be sent on to consumers in homes and industry, Moray Offshore Renewables Ltd have published proposals to construct transmission infrastructure: offshore substations, subsea cables, onshore underground cables and onshore substations for connection to the existing electricity transmission grid south of New Deer. We are now consulting on our proposals for the transmission infrastructure.

If you would like to find out more, please come along to one of our public exhibitions where you can discuss the plans with our project staff, and take the opportunity to participate in the consultation.

- The Village Hall, New Deer, Tues 10 June, 12pm – 8pm
- The Fife Lodge Hotel, Banff, Wed 11 June, 12pm – 8pm
- Station Hotel, Portsoy Thurs 12 June, 12pm – 8pm

Your opinions are invited, and the Pre Application Consultation on our proposals runs until June 25th 2014

The Environmental Impact Assessment Scoping Report is available at www.morayoffshorerenewables.com, and in local libraries. For further information, or to make written comment on the proposals, please contact The Communications Manager, Moray Offshore Renewables, 40 Princes St, EDINBURGH EH2 2BY

Please note that all comments must be sent to Moray Offshore Renewables Ltd, and are not representations to Aberdeenshire Council. An opportunity to make representations to the Council will exist when a formal application is made.

Annex 5 - Advertisement Poster



MORAY

OFFSHORE RENEWABLES

Public Consultation Exhibitions – Transmission Infrastructure

In March, Moray Offshore Renewables was granted consent to develop 1,116MW of offshore wind generation infrastructure in the Outer Moray Firth. In order to get the power onshore so that it can be sent on to consumers in homes and industry, Moray Offshore Renewables Ltd have published proposals to construct transmission infrastructure: offshore substations, subsea cables, onshore underground cables and onshore substations for connection to the existing electricity transmission grid south of New Deer. We are now consulting on our proposals for the transmission infrastructure.

If you would like to find out more, please come along to one of our public exhibitions where you can discuss the plans with our project staff, and take the opportunity to participate in the consultation.

Your opinions are invited, and the Pre Application Consultation on our proposals runs until June 25th 2014. The Environmental Impact Assessment Scoping Report is available at www.morayoffshorerenewables.com, and in local libraries. For further information, or to make written comment on the proposals, please contact The Communications Manager, Moray Offshore Renewables, 40 Princes St, EDINBURGH EH2 2BY. Please note that all comments must be sent to Moray Offshore Renewables Ltd, and are not representations to Aberdeenshire Council. An opportunity to make representations to the Council will exist when a formal application is made.

- The Village Hall, New Deer, Tues 10 June, 12pm – 8pm
- The Fife Lodge Hotel, Banff, Wed 11 June, 12pm – 8pm
- Station Hotel, Portsoy Thurs 12 June, 12pm – 8pm

Annex 6 - Direct Notification Letter

CKD Galbraith

CKD GALBRAITH
59 GEORGE STREET
EDINBURGH EH2 2JG

TEL: 0131 240 6960
FAX: 0131 240 6961

EMAIL: EDINBURGH@CKDGALBRAITH.CO.UK
WEB: WWW.CKDGALBRAITH.CO.UK

Our Ref: RJH/DB/

2nd June 2014

Dear Mr

MORAY OFFSHORE RENEWABLES LIMITED – MORAY OFFSHORE WIND FARM

We act on behalf of Moray Offshore Renewables Limited who are proposing to build an offshore wind farm in the Moray Firth and connect to the electricity transmission grid in and around New Deer. At this stage we are looking at various options which do not directly impact on your ownership but which are in the general vicinity of your property.

We would be very pleased to discuss by telephone or should you prefer, meet with you in person to outline the current position.

You may be aware that there are a series of public consultation events next week as detailed below and we would be very pleased to meet you there or alternatively we can make arrangements to visit you should you wish:-

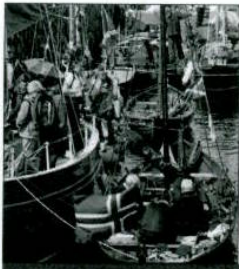
The Village Hall, New Deer – Tuesday 10th June, 12 p.m. to 8 p.m.
The Fife Lodge Hotel, Banff – Wednesday 11th June, 12 p.m. to 8 p.m.
Station Hotel, Portsoy – Thursday 12th June, 12 p.m. to 8 p.m.

In the meantime, should you have any queries please do telephone either David Clarke – 01786 434630 or Richard Higgins – 01786 434625.

Yours faithfully


Richard Higgins
For CKD Galbraith LLP

Email: richard.higgins@ckdgalbraith.co.uk
Direct Dial: 01786 434625



Banffshire Journal



Win family tickets for the big boat festival Page 11

Win tickets for Zippo's Circus Banff shows Page 19

No 8665

TUESDAY, JUNE 17, 2014

banffshire-journal.co.uk

80p

OFFSHORE CABLE POISED TO POWER THROUGH SHIRE

By KYLE RITCHIE

A £300 million project which will route an underground power line through the heart of Banffshire to connect an extensive offshore wind farm to the National Grid is expected to go to the planning stage this month.

Moray Offshore Renewables Ltd (MORL) plans to run the cable from Inverboyndie beach to two new electricity sub-stations at New Deer 21 miles away.

The power will come from three wind farms in the outer Moray Firth, where as many as 62 200-metre turbines will form the first deep water turbine project in Scottish waters.

Public consultation events were held in Banff, Portsoy and New Deer last week to allow residents to look at the proposals and pass comment before the official planning application is submitted to Aberdeenshire Council.

Craig Milroy, MORL spokesman, told the 'Banffshire Journal': "We have done land, topographic and location surveys, and the purpose of the public events were to find out any local concerns and take them into consideration before we submit our planning application."

"We anticipate that this will be lodged at the end of this month and all feedback from the consultations will be collated and will form part of our planning application."

"There has been a positive response and the main concerns are where everything is going to be situated and the project's timescale."

The Edinburgh-based consortium proposes a cable landing point from

Construction work set to create 600 jobs

offshore sub-station platforms buried below the sea-bed with the cable running underground as it comes onshore. MORL has identified Inverboyndie beach as a preferred landing point where all permanent infrastructure will be below ground.

The underground cable will be buried a minimum of a metre down along its land route, which has yet to be finalised along a kilometre-wide corridor.

A trench will be dug to accommodate the cable, which will pass under at least three major roads, including the busy A947 Banff-Aberdeen route and all land will be fully reinstated after the cable has been installed.

The cable will end at grid connection points south west of New Deer, where MORL will build two 12.5-acre AC substations. Permanent sites for them have yet to be finalised.

The construction phase of the project is expected to create 600 jobs and the wind farm project is expected to supply enough electricity to power 688,000 UK households.

The MORL consortium, which involves EDP Renewables and Repsol, was given Scottish Government consent to site up to 339 turbines off the coast of Caithness in March.

If the cable project is approved, work could begin next year with the first electricity being generated by 2016.



The underground power cable will transport electricity from wind turbines in the outer Moray Firth to Inverboyndie and on to two new sub-stations near New Deer.

Whisky thieves face trouble selling rare Glenglassaugh haul

THIEVES who made off with bottles of valuable whiskies from the Glenglassaugh Distillery visitor centre last week may find their stolen haul too hot to handle, according to industry experts.

Police launched an investigation last week after whisky valued at more than £10,000 was stolen from the distillery near Portsoy.

A number of bottles of a rare whisky were taken during the raid, which happened between 4.30pm on Tuesday, June 10, and 9.30am the next day.

Among the bottles taken were 37-year-old and 40-year-old Glenglassaugh malts, produced before the distillery was mothballed in 1986, along with bottles of Evolution, Tonfa and Revival whisky.

But industry experts insist the older malts, which are highly valued by aficionados and collectors will be extremely difficult to sell without the thieves running the risk of exposing themselves on the internet.

Whisky analyst Alan Gray said: "Some of these old whiskies can be very expensive, thousands of pounds is certainly possible, because the distillery was closed for many years. When a distillery has been closed, you do hear of whiskies of 40 to 50 years old going for a lot of money."

Banchory-based whisky specialist Gordon Muir said the high value of the rare malts would make them difficult to sell anonymously.

"The problem for the thieves, especially with the 40-year-old, is that they would have to go online to find the right buyers."

"If those bottles came up online, the sellers would be investigated."

Glenglassaugh's parent company, the BenRiach Distillery Company, which bought the Portsoy facility in 2013, four years after it was re-opened and put back into production in 2008, say security will be "beefed up" after last week's break-in.

Four pot stills and a quantity of blue, grey and green Glenglassaugh Distillery branded Lyle & Scott-made jumpers were also stolen during the raid.

PC Geraint Kallies of Banff police office said: "This was a very unusual theft and I'm appealing for any witnesses who may have any information regarding the identity of the people responsible to come forward with what they know."

"I would also ask that anybody who is offered whisky or Glenglassaugh Distillery-branded clothing to contact Police Scotland on 101 or Crimestoppers anonymously on 0800 555111."

QUEEN'S Baton Relay's twin towns visit plans gathering momentum.

Full story on Page 2
NEW Aberdeenshire tartan, designed by Banff-born, London-based artist Donna Wilson is launched at Haddo House.

Full story on Page 3

IN THE NEWS

INCIDENTS of violent crime down in North-east, say police

Full story on Page 4

MOTIVE Offshore employees take on gruelling charity challenge.

Full story on Page 7

NOMINATION

Gracie & Viki



Inspired giving

@ Scotts of Banff

Purchase eight composite links and receive a £20 Nomination link voucher

TO GET YOU STARTED RECEIVE A FREE BRACELET WHEN YOU PURCHASE YOUR FIRST LINK

SCOTT CHEMIST, 9-11 CASTLE STREET, BANFF BANFFSHIRE AB45 1DH • Tel (01261) 815039

Find us on facebook - Scott Chemist

Developers unveil plans for underground power line

PROJECT

BY JAMIE BUCHAN

Plans to create a £300million underground power line through Aberdeenshire as part of an offshore windfarm project were unveiled by developers yesterday.

The 30-mile cable, which will run from the Banff coast to the heart of the Buchan countryside, will feed electricity from hundreds of turbines in the outer Moray Firth.

Construction of the link, which would be buried just over 3ft below ground, is

expected to create about 600 jobs. Yesterday, Moray Offshore Renewables Ltd (MORL), the consortium behind the project, revealed its latest "search area" for the cable, which showed it would begin

"They've been asking about our timescales"

somewhere between Whitehills and Banff.

The plans went on display at a public consultation event at New Deer. Sessions continue today at Banff's

Fife Lodge Hotel and tomorrow at Portsoy's Station Hotel. Feedback from residents during this week's presentations will be used to narrow-down the search area and create a more precise route. A planning application is likely to be submitted later this summer.

A trench will be dug to accommodate the cable, which will run to land to the south-west of New Deer. It will go under at least three main roads, including the busy A947 Banff-Aberdeen route. Two new electricity substations will be built at the end of the corridor.

MORL spokesman, Craig



PLANS: Richard Higgins, of CKD Galbraith, with an artist's impression of the proposed substations

Milroy, said yesterday's session had been well attended. "People seem to have a good understanding of what the project is about and they've been asking

about our timescales and about creating economic opportunities for the area."

He said questions had already been raised by some landowners about possible

compensation for running the cable under their ground. MORL, which comprises EDP Renewables and Repsol, was given Scottish Government consent earlier

this year to site up to 330 turbines off the coast of Caithness. If approved work could begin next year with the first electricity being generated by 2016.

WEATHER

GENERAL SITUATION

A few showers are expected in northern and western parts of Scotland today, although these will progressively fade through the afternoon. Elsewhere, mainly dry with sunny spells. Warm in eastern Scotland.

OUTLOOK FOR THE WEEK AHEAD

After a fine start tomorrow, patchy rain will edge in from the north-west. Scattered showers on Friday, with the best of any sunshine in the south. Isolated showers over the weekend.

HILLWALKERS' 48-HOUR FORECAST

East Highlands, West Highlands, Cairngorms, Skye: Light showers in Skye and the West Highlands today. Mainly dry and fine elsewhere. Cloudy in the west tomorrow as patchy rain edges in from the west. Brighter in eastern areas. Freezing level above the peaks.

HIGHEST & LOWEST

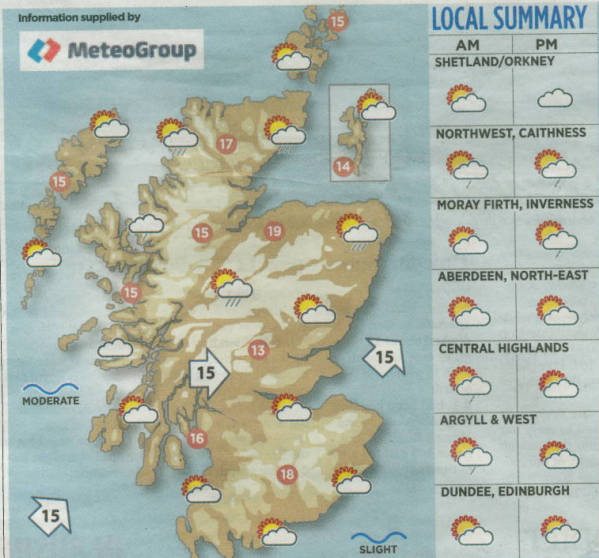
In Britain yesterday
Warmest: Santon Downham (Norfolk) 24°C (75°F)
Cooldest (day): Fair Isle (Northern Isles) 15°C (59°F)
Wettest: Castlederg (Co Tyrone) 1.02 inches
Sunniest: Charlwood (Sussex) 12.2 hours

LIGHT-UP TIMES

Moving vehicles should display dipped headlights from sunset to sunrise and during times of poor visibility. Times shown are BST.

Sunrise	Sunset	Midnight	Light-ups
04:15	22:05	19:52	03:24 22:05 04:12
INVERNESS			
04:15	22:05	20:01	03:29 22:16 04:15
LERWICK			
03:41	22:28	20:04	03:06 22:28 03:41
STORNOWAY			
04:21	22:30	20:15	03:37 22:30 04:20

2014 All rights reserved



HIGH TIDES

All tide times are BST

	12.51	01.12	13.36
Aberdeen	12.51	02.08	14.32
Arbroath	23.59	-	12.28
Banff	12.01	00.25	12.51
Buckie	23.51	-	12.15
Fraserburgh	23.49	-	12.15
Invergordon	22.34	11.02	23.18
Lerwick	23.59	-	12.28
Macduff	17.51	05.59	18.32
Mallaig	13.41	02.02	14.26
Montrose	17.34	05.42	18.15
Oban	12.17	00.38	13.02
Peterhead	20.28	08.50	21.07
Scrabster	18.41	06.59	19.21
Ullapool	23.04	11.29	23.49
Wick			

AROUND SCOTLAND

2-day forecast

	Today	Tomorrow
Aberdeen	20 11 fair	20 14 cloudy
Arbroath	18 11 fair	19 12 cloudy
Aviemore	19 9 fair	19 12 cloudy
Banff	18 11 showers	19 13 cloudy
Buckie	18 11 showers	19 13 cloudy
Fraserburgh	19 11 showers	19 13 cloudy
Hull	19 10 fair	19 12 fair
Invergordon	19 12 showers	19 13 cloudy
Inverness	19 12 showers	19 13 cloudy
Kilnass	14 11 cloudy	15 10 rain
Lerwick	18 11 showers	19 13 cloudy
Mallaig	15 11 drizzle	15 12 rain
Oban	15 11 drizzle	16 12 rain
Peterhead	18 11 showers	19 13 cloudy
Stornoway	15 11 fair	16 12 rain
Wick	15 9 showers	15 12 rain

AROUND THE UK

2-day forecast

	Today	Tomorrow
Belfast	19 11 fair	20 14 cloudy
Birmingham	21 10 fair	23 11 fair
Bristol	16 12 fair	19 13 sun
Cardiff	19 10 fair	23 11 sun
Darlington	20 10 fair	22 11 fair
Exeter	19 8 fair	23 9 sun
Hull	21 10 fair	22 11 fair
Liverpool	20 13 fair	23 15 sun
Leeds	19 11 fair	20 12 fair
Leicester	21 10 fair	23 12 sun
London	22 13 fair	26 15 sun
Manchester	20 10 fair	22 11 sun
Norwich	21 11 fair	23 12 sun
Plymouth	19 11 fair	20 12 fair
Reading	21 11 fair	23 12 fair
Swansea	15 11 cloudy	16 13 fair

ABROAD

Weather at noon local time yesterday except *denotes readings from the day before

	(°C)	(°F)	
Amsterdam	24	75	sunny
Athens	28	82	fair
Auckland	14	57	rain
Balearics	31	88	sunny
Barbados	30	86	drizzle
Barcelona	24	75	sunny
Beijing	26	79	fair
Berlin	28	82	sunny
Bermuda*	24	75	cloudy
Brussels	24	75	sunny
Budapest	33	91	fair
Cairo	31	88	sunny
Canaries	24	75	sunny
Chicago*	24	75	sunny
Copenhagen	23	73	fair
Corfu	31	88	sunny
Costa del Sol	24	75	fair
Crete	24	75	showers
Cyprus	28	82	fair
Dublin	15	59	thunder
Faro	25	77	sunny
Frankfurt	25	77	rain
French Riviera	27	81	sunny
Geneva	28	82	sunny
Helsinki	19	66	sunny
Istanbul	23	73	sunny
Johannesburg	14	57	sunny
Lisbon	21	70	fair
London	22	72	sunny
Los Angeles*	20	68	sunny
Madeira	21	70	sunny
Madrid	27	81	sunny
Majorca	31	88	sunny
Malta	27	81	sunny
Miami*	30	86	fair
Montreal*	25	77	fair
Moscow	16	61	showers
Naples	32	90	sunny
New York*	19	66	rain
Oslo	25	77	sunny
Paris	18	64	thunder
Prague	29	84	sunny
Rhodes	24	75	showers
Rome	32	90	sunny
San Francisco*	24	75	sunny
Singapore	32	90	fair
Stockholm	21	70	sunny
Sydney	15	59	showers
Toronto	25	77	cloudy
Vancouver*	18	64	fair
Vienna	31	88	sunny
Warsaw	26	79	sunny

Puzzles

Double crossword

Letters to the editor

from page 34

THE POUND ABROAD

EU 1.18 EURO

Major EU countries which have not yet adopted the Euro (all figures are indicative):

Czech Republic	31.18 KORUNA
Denmark	8.78 KRON
Hungary	336.65 FORINT
Poland	4.46 ZLOTY
Sweden	10.72 KRONA

REST OF THE WORLD

Australia	1.70 DOLLAR
Canada	1.74 DOLLAR
Egypt	10.65 POUND
Hong Kong	12.36 DOLLAR
Israel	5.24 SHEKEL
Japan	163.63 YEN
Mexico	19.50 PESO
New Zealand	1.84 DOLLAR
Norway	9.56 KRONA
Saudi Arabia	5.89 RIYAL
Singapore	1.96 DOLLAR
South Africa	16.82 RAND
Switzerland	1.44 FRANK
Thailand	48.79 BAHT
Turkey	3.30 NEW LIRA
USA	1.60 DOLLAR

See the Business page for key Market Rates

Under the weather?...

...visit pressandjournaltravel.co.uk
for the holiday you deserve

Annex 8 - Notice of Application & Response

For Official Use Only
Ref: ENQ/
Date Recd:

Aberdeenshire
COUNCIL



Planning and Environmental Services

PROPOSAL OF APPLICATION NOTICE

NOTICE UNDER SECTION 35(B) OF THE TOWN AND COUNTRY PLANNING (SCOTLAND) ACT 1997

1. Applicant Contact Details

Name..... MORAY OFFSHORE RENEWABLES LTD
Address & Post Code ... 4TH FLOOR 40 PRINCES STREET, EDINBURGH EH2 2BY
Daytime Phone Number 0131 556 7602
Email Address peter.moore@edpr.com

2. Agent Contact Details (if applicable)

Name
Address & Post Code
Daytime Phone Number
Email Address

3. Site Address of Proposed Development

..... SEE ADDITIONAL INFORMATION NOTE 3
.....
Post Code (if applicable)

4. Description of Proposed Development (please provide a general description of your proposal, including the nature and scale of the development and gross floor space of buildings where proposed, continue on a separate sheet if required)

..... SEE ADDITIONAL INFORMATION NOTE 4
.....
.....
.....

5. Is the proposed development a 'national' or 'major' development (as defined by the Town and Country (Hierarchy of Developments) (Scotland) Regulations 2009?

National ☐ Major ☒

6. The following details of the proposed development should be submitted to enable an assessment to be made:

- Location Plan, eg Ordnance Survey based scale plan 1:250 showing the outline of the site (this is the extent of and to which the development proposed relates
- Site Plan, eg Ordnance Survey based scale plan 1:200 showing an indicative layout, if available
- Any useful documents or plans

7. Please give an account of what consultation the applicant proposes to undertake, when such consultation is to take place, with whom and in what form (continue on a separate sheet if required)

SEE ADDITIONAL INFORMATION NOTE 7

8. Has a copy of this notice been served on the Community Council(s)?

YES ☒ NO ☐

If Yes, provide details of the address(es) to which the notice was sent and the date sent.

SEE ADDITIONAL INFORMATION NOTE 8	Date
	Date
	Date
	Date

Signed 

Print Name PETER MOORE

Date 28/3/14

Completed forms should be sent to the Head of Development Management and Building Standards at the main service centre for the Area in which the development is proposed. Contact details are available on the website.

Data Protection Act 1998 – The information on this form will be made available for public inspection and will be published on the Council's website.

Moray Offshore Renewables Ltd

Additional Information to Proposal Of Application Notice

Note 3 – Site of Proposed Development:

In March 2014, Moray Offshore Renewables Ltd (MORL) was granted consent by the Scottish government to construct and operate the Telford, Stevenson and MacColl offshore windfarms in the outer Moray Firth. These require to be connected to the electricity transmission grid on the mainland at a point determined by National Grid and Scottish Hydro Electric Transmission Ltd, to the south of New Deer.

MORL is undertaking this consultation on the proposed onshore infrastructure required within the study area detailed on the map attached. It includes:

- An underground cable landing point on the coast which is likely to be at or near Inverboyndie or Sandend.
- A cable corridor of up to 1km wide located within the search areas indicated on map 1. Note that the cable route will only occupy a limited section within the 1km corridor
- Two new substations, co-located at a point within the substation search area indicated on map 1 along the route of existing 275kV transmission line to the south of New Deer. The substation search also includes the underground cable corridor as above.

Note 4 - Description of Proposed Development:

The proposed infrastructure will consist of:

- An underground cable landing point on the coast including a cable jointing pit where the offshore and onshore cables meet.
- Underground cables buried within trenches which will follow a route optimised from within the corridor of up to 1km (for which consent is sought) within the search areas indicated on map 1.
- Two electricity substations which will be located adjacent to each other.

Note 7 - Public Engagement Events

MORL propose to hold three public engagement events with the following elements:

- i. Open from 12.00pm until 8.00pm. This is intended to provide accessibility for those who can attend during a lunch-hour, as well as provision for those who are only able to attend after the end of the working day.
- ii. Project story-board display, providing location and infrastructure information. Audience – specific literature available to the public.
- iii. Staffed by members of the project team, from the Consenting andr Engineering division. Use of project staff rather than PR consultancy staff enables direct communication between

stakeholders and the project, as well as providing the most up-to-date information about the proposed infrastructure and its relationship with other aspects of the project.

iv. Feedback on the proposals collected through opinion survey leaflets, thus allowing consultation rather than simple provision of information. These will use the 'freepost' service to allow returns to be made after the event.

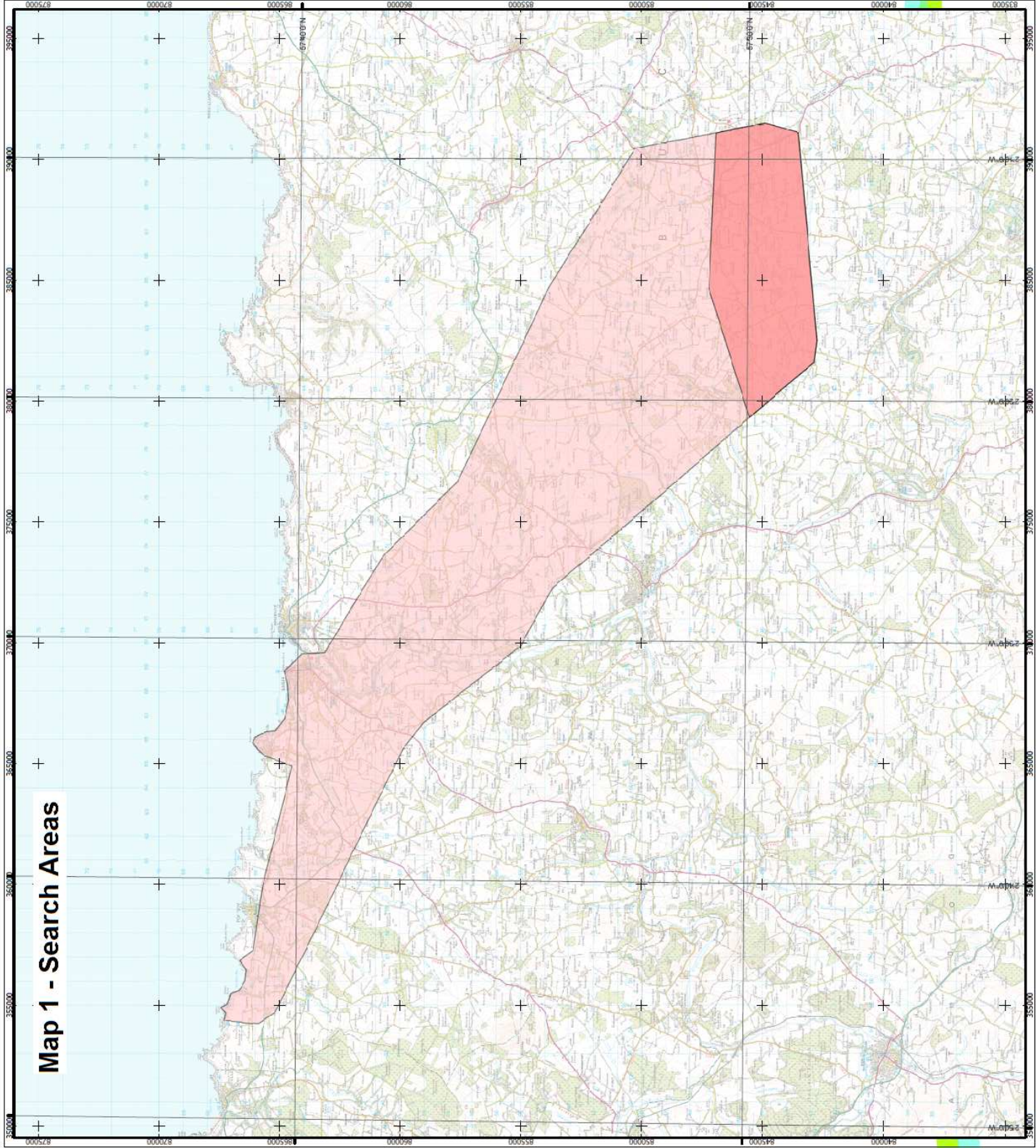
v. Events will be advertised two weeks in advance in the local press, and through posters in local outlets, and through direct mailing where appropriate

- The Village Hall, New Deer, Tues 10 June, 12pm – 8pm
- The Fife Lodge Hotel, Banff, Wed 11 June, 12pm – 8pm
- Station Hotel, Portsoy Thurs 12 June, 12pm – 8pm

Note 8 - The following Community Councils have received a copy of this Proposal of Application Notice:

Fordyce and Sandend Community Council	marieaston37@yahoo.co.uk
Portsoy and District Community Council	moirastewartcc13@outlook.com
Whitehills and District Community Council	jrbalharry123@btinternet.com
Banff and Macduff Community Council	bandmcommunitycouncil@gmail.com
Alvah and Forglen Community Council	liz_gilluk@yahoo.co.uk
King Edward and Gamrie Community Council	muller1@mysurf.org
Turriff and District Community Council	rose.wlea@fsmail.net
Deer Community Council	maureen.stephen@aberdeenshire.gov.uk
Fyfie, Rothie & Monquhitter Community Council	orpwood@hotmail.com

These notices were sent on 31 March 2014



Our Ref: BB/ENQ/2014/1145

Your Ref:

Ask for: Alan Davidson

Direct Dial: 01224-664740

Email: alan.davidson@aberdeenshire.gov.uk

Moray Offshore Renewables Ltd

4th Floor

40 Princes Street

Edinburgh

EH2 2BY

Date: 16 April 2014

Dear ;Sir/Madam

Proposal: Installation of MORL Underground Cable Corridor and Erection of 2 no. Electricity Substations

Address: Landing At Sandend Or Inverboyndie, Banff Travelling To The South Of, New Deer, Turriff

I write with reference to the above proposal and the Proposal of Application Notice you submitted in this regard on 31 March 2014

I can advise you that the proposal constitutes a major development as defined in the Town and Country Planning (Hierarchy of Development) (Scotland) Regulations 2008.

You are therefore requested to carry out the consultation specified in the Notice prior to the submission of a planning application and such application must not be submitted before a period of 12 weeks has elapsed from submission of the Proposal of Application Notice.

The application must be accompanied by a pre-application consultation report. The

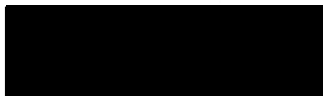
report should be in writing and should include the following information:

- Who has been consulted;
- What steps were taken to comply with the statutory requirements for pre-application consultation with the community and the additional requirements set out above;
- A copy of the advertisement for the public event;
- Details of the material made available at the public event;
- Evidence that steps were taken to explain the nature of the pre- application consultation and that further representation can be made to the planning authority at the application stage;
- Details of what comments were made by the community;
- Details of how the applicant has responded to the comments made, including whether and the extent to which the proposals have changed as a result of the pre-application consultation.

Please do not hesitate to contact me if you wish to discuss the above requirements or have any other queries.

Please note that the content of this letter and the pre-application consultation report will be made available for public inspection and will be published on the Council's web site at www.aberdeenshire.gov.uk/planning.

Yours faithfully

A black rectangular box used to redact the signature of the Head of Planning and Building Standards.

Head of Planning and Building Standards

Moray Offshore Renewables
EDPR UK
40 Princes Street
EDINBURGH

EH2 2BY

info@morayoffshorerenewables.co.uk



moray offshore renewables ltd