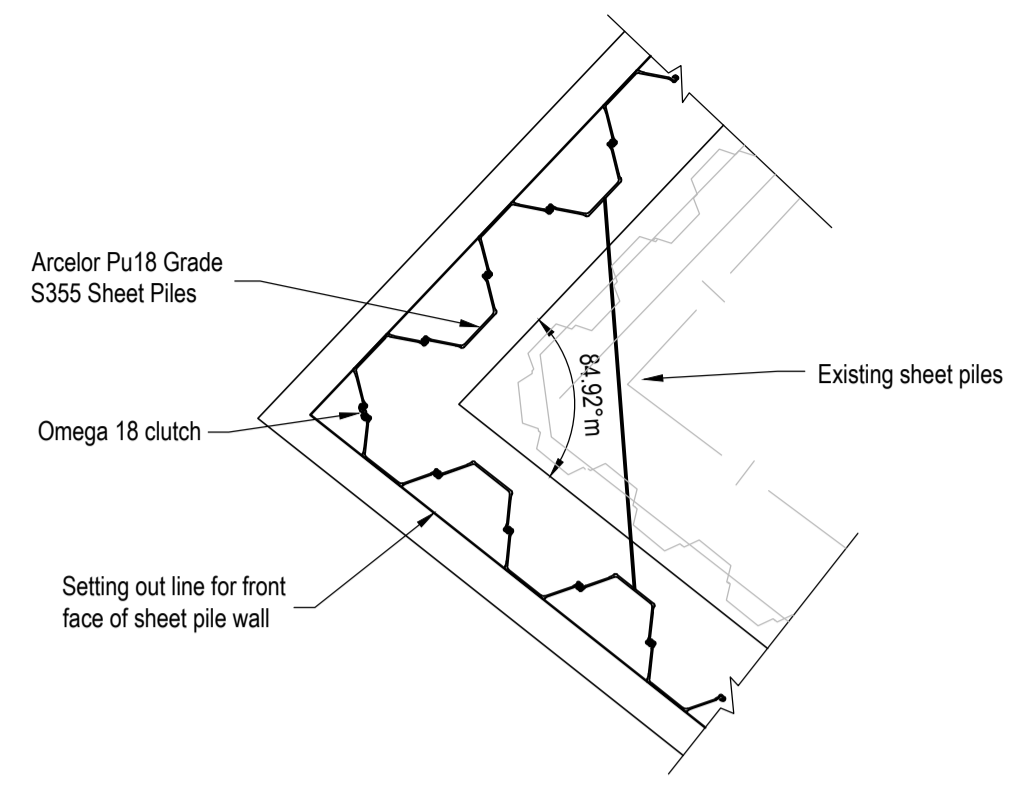
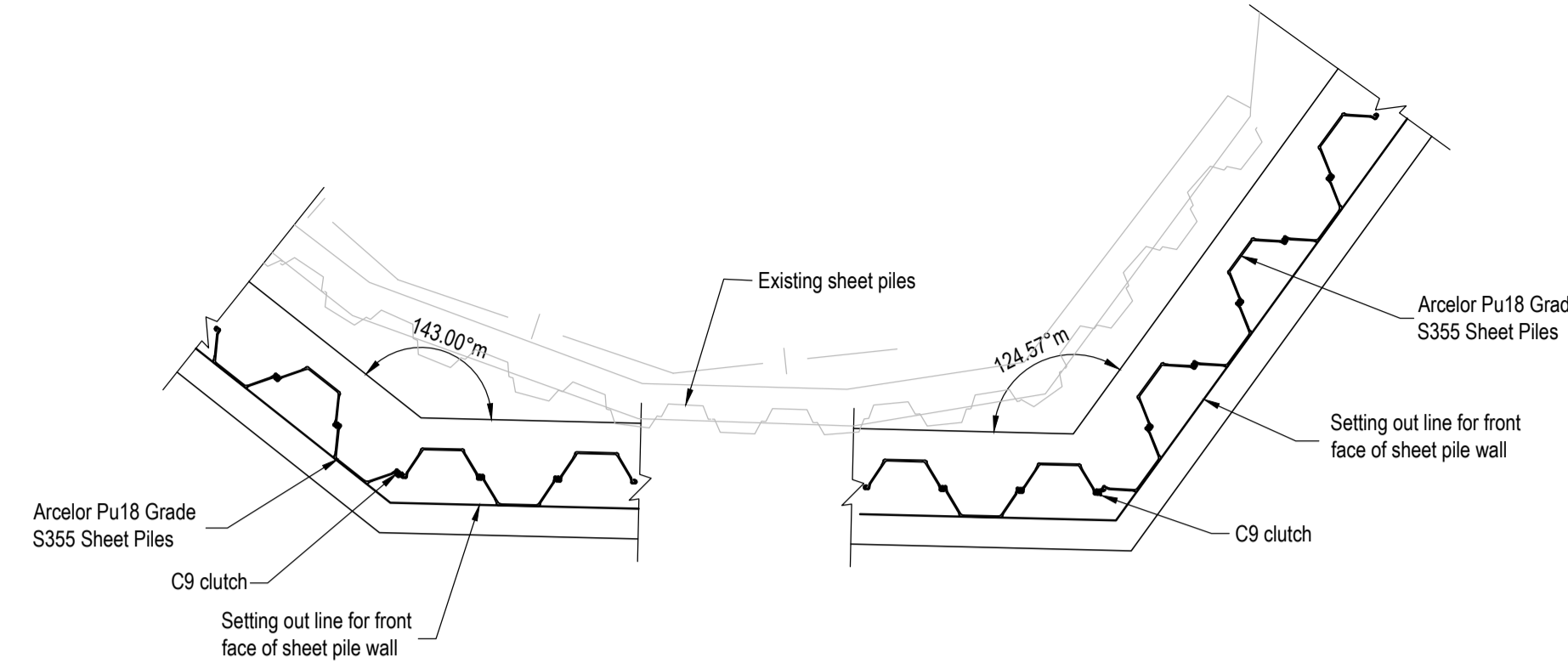


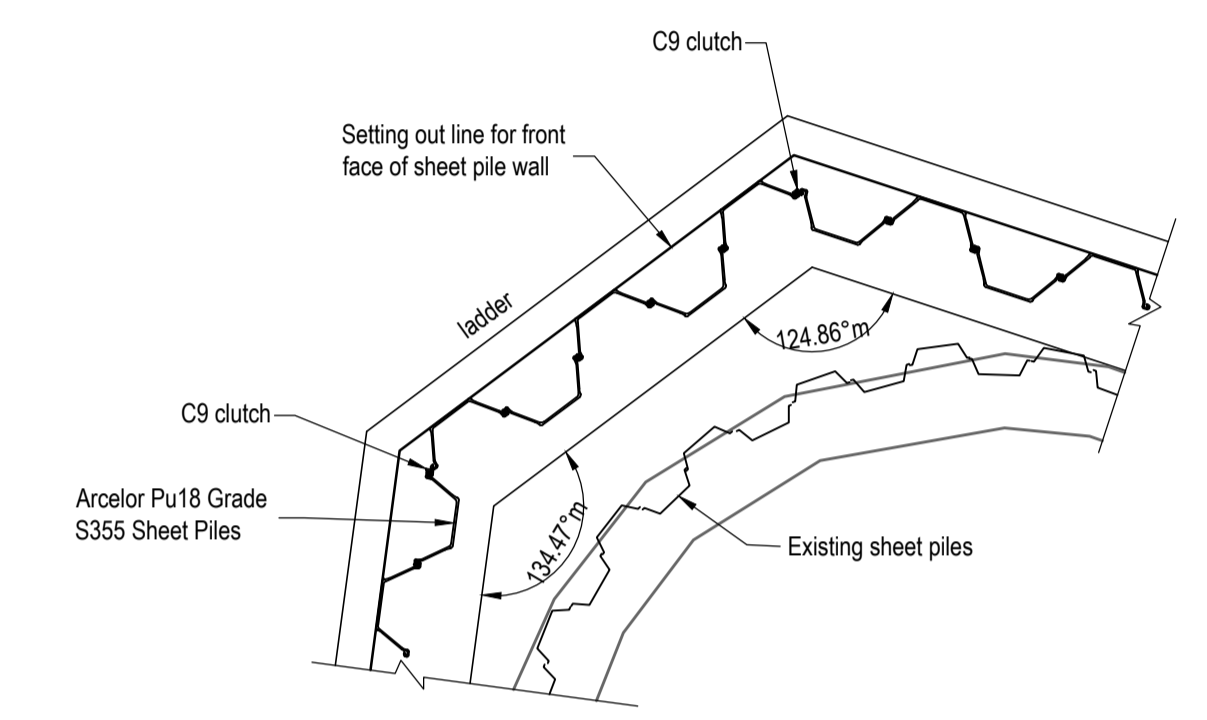
Proposed Sheet Piling General Arrangement for Net Pier [1:100]



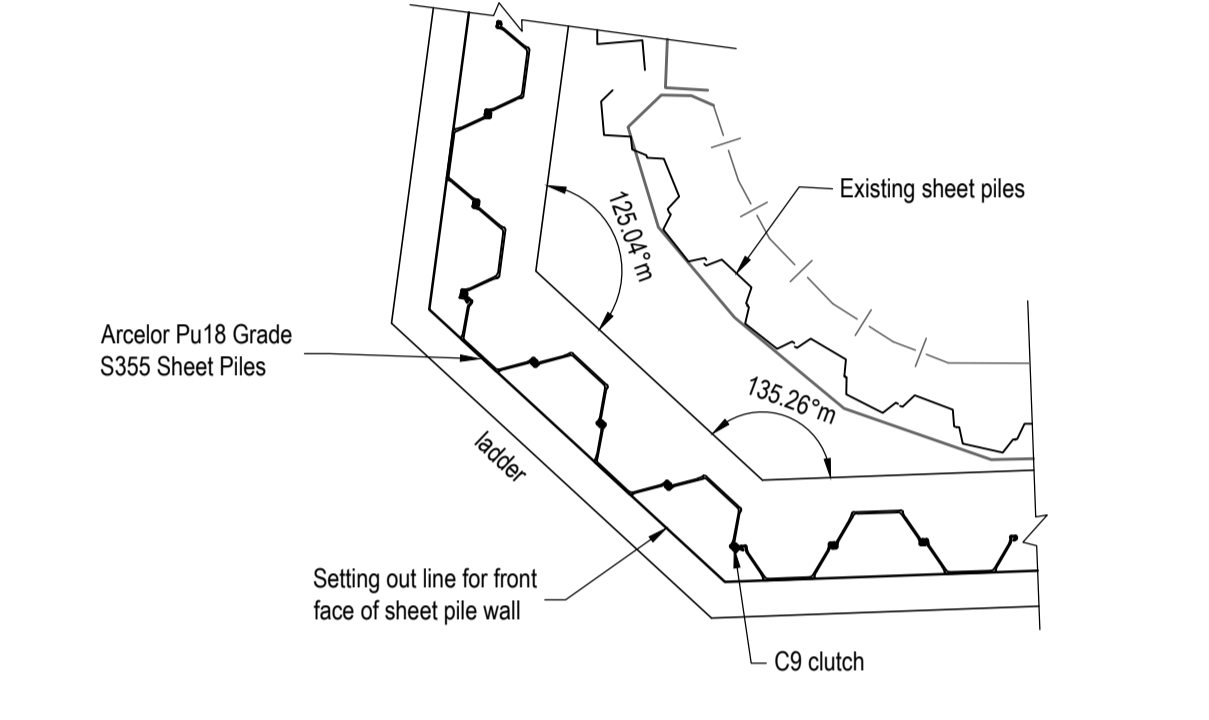
Net Pier - Corner 1 Details [1:50]



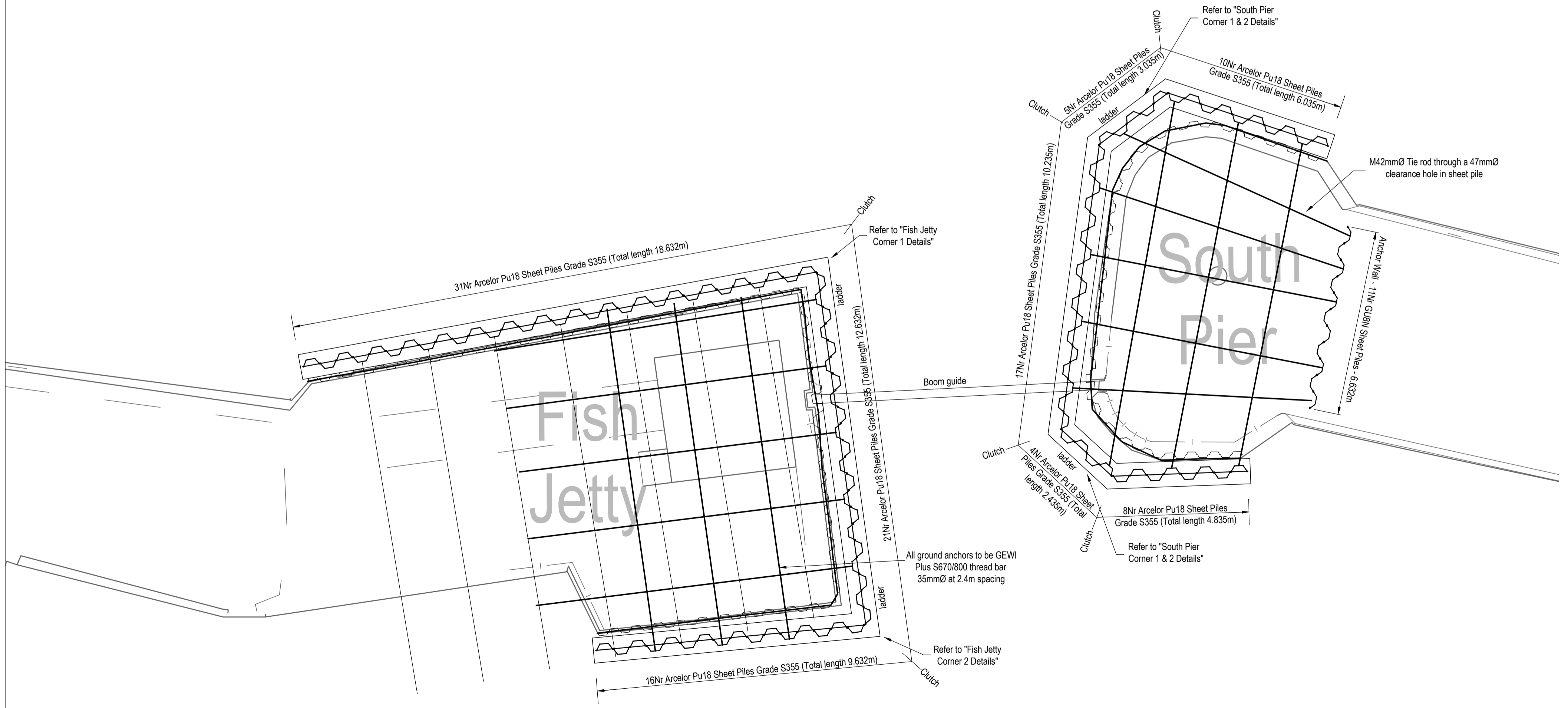
Net Pier - Corner 2 & 3 Details [1:50]



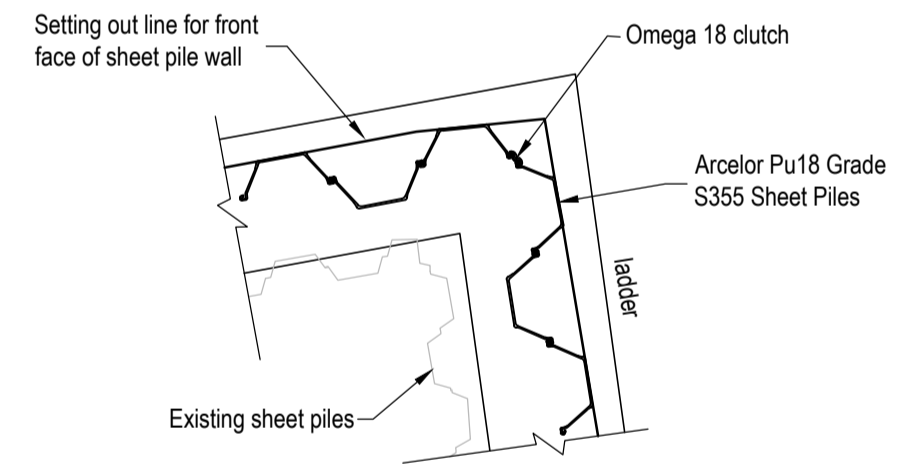
South Pier - Corner 1 & 2 Details [1:50]



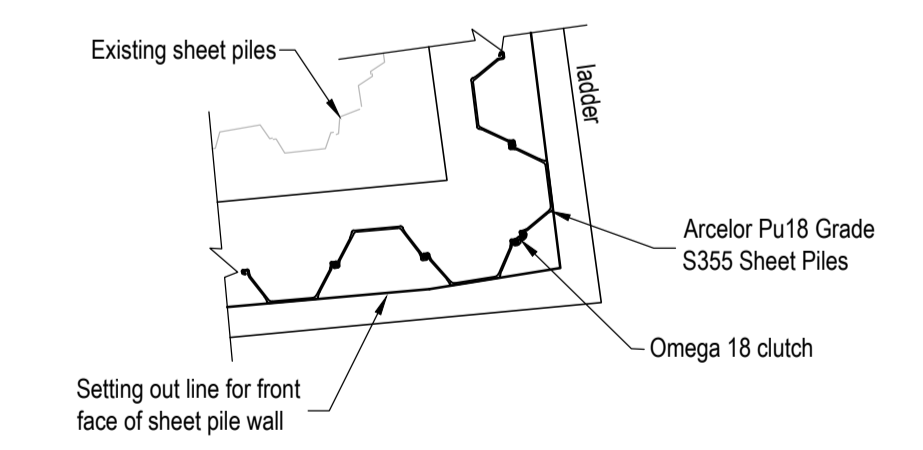
South Pier - Corner 3 & 4 Details [1:50]



Proposed Sheet Piling General Arrangement for Fish Jetty & South Pier [1:200]



Fish Jetty - Corner 1 Details [1:50]



Fish Jetty - Corner 2 Details [1:50]

NOTES

- Verifying Dimensions. The contractor shall verify dimensions against such other drawings or site conditions as pertain to this part of the work.
- Existing Services. Any information concerning the location of existing services indicated on this drawing is intended for general guidance only. It shall be the responsibility of the contractor to determine and verify the exact horizontal and vertical alignment of all cables, pipes, etc. (both underground and overhead) before work commences.
- Issue of Drawings. Hard copies, dwf and pdf will form a controlled issue of the drawing. All other formats (dwg, dxf etc.) are deemed to be an uncontrolled issue and any work carried out based on these files is at the recipient's own risk. RPS will not accept any responsibility for any errors arising from the use of these files, either by human error by the recipient, listing of un-dimensioned measurements, compatibility issues with the recipient's software, and any errors arising when these files are used to aid the recipient's drawing production, or setting out on site.
- Datum. Chart Datum

5.	CONCRETE	MIX TYPE	COVER	FINISH

- FOR GENERAL SECTION DETAILS REFER TO DWG IBM0745-RPS-IN-T-DR-C-0503
- FOR MAIN AND ANCHOR WALL SHEET PILE DETAILS REFER TO DWG IBM0745-RPS-IN-T-DR-C-0503
- MAIN WALL PILES TO BE ARCELOR PU18 SHEET PILES OR SIMILAR APPROVED OF GRADE S355.
- ANCHOR WALL PILES TO BE ARCELOR GU8N SHEET PILES OR SIMILAR APPROVED AND OF GRADE S355.
- WALERS TO BE GRADE S355. TRIMMED TO SUIT FOR SPLICE LOCATION ON SITE TO SUIT ENDS AT 1/5 OF TIE ROD SPACING.
- TIE RODS AND TURNBUCKLES TO BE MINIMUM YIELD STRENGTH OF 460 N/mm² AND ULTIMATE TENSILE STRENGTH OF 610 N/mm². WITH ROLLED UP ENDS AND BITUMINOUS COATING SYSTEM AS DENSO PASTE PRIMER TO 200 MICRONS THICK FOLLOWED BY DENSO PETROLATUM TAPE (DENSO TAPE) WRAPPED AT 55% OVERLAP AND WITH AND OUTERWRAP OF DENSO SELF ADHESIVE PVC TAPE WITH 55% OVERLAP OR EQUAL PROTECTION. (DENSO POL 60 TAPE NOT REQUIRED)
- ALL TIE RODS AND BOLTS TO HAVE ROUND WASHERS AND NUTS.
- EXPOSED ENDS OF TIE RODS TO BE PAINTED WITH MINIMUM 400µm (NOMINAL 450µm) OF POLYAMIDE CURED COAL TAR EPOXY COATING BEFORE FEEDING THROUGH WALER AND TIGHTENING NUT.
- ALL WASHERS, WASHER PLATES, SPLICE PLATES AND BEARING PLATES TO BE GRADE S355.
- BOLTS TO BE GRADE 8.8
- TIE BAR DIMENSIONS ARE BASED ON A 25m TIE BAR WITH MINIMUM 250mm THREADED LENGTH ??????????

rev	amendments	check	date

rps Elmwood House
74 Boucher Road
Belfast
BT12 6RZ

T +44 (0) 28 90 667914
F +44 (0) 28 90 668286
W www.rpsgroup.com/ireland
E ireland@rpsgroup.com

Client
Aberdeenshire Council

Project
Stonehaven Harbour Sheet Pile Inspection

Title
Proposed Sheet Piling General Arrangement

Project Number	Sheet Size	Drawing Scale
IBM0745	A1	1:100

Drawing Number
IBM0745-RPS-IN-T-DR-C-0502

Drawn By	Status	Revision
M.M	Tender	-

Checked By	Approved By	Date
S.G	S.G	22-04-2020