

Do not scale from this drawing.

SAFETY HEALTH AND ENVIRONMENTAL INFORMATION

IN ADDITION TO THE HAZARD/RISKS NORMALLY ASSOCIATED WITH THE TYPES OF WORK DETAILED ON THIS DRAWING, NOTE THE FOLLOWING RISKS AND INFORMATION:

RISKS LISTED HERE ARE NOT EXHAUSTIVE. REFER TO DESIGN ASSESSMENT FORM NO.

CONSTRUCTION
Falls from height - Exposed quay edge
Unstable structure - Existing structure has failed in some areas
Asbestos/Hazardous materials - Reclaimed land known to contain asbestos.

DEMOLITION
Sequential modifications to existing quay.

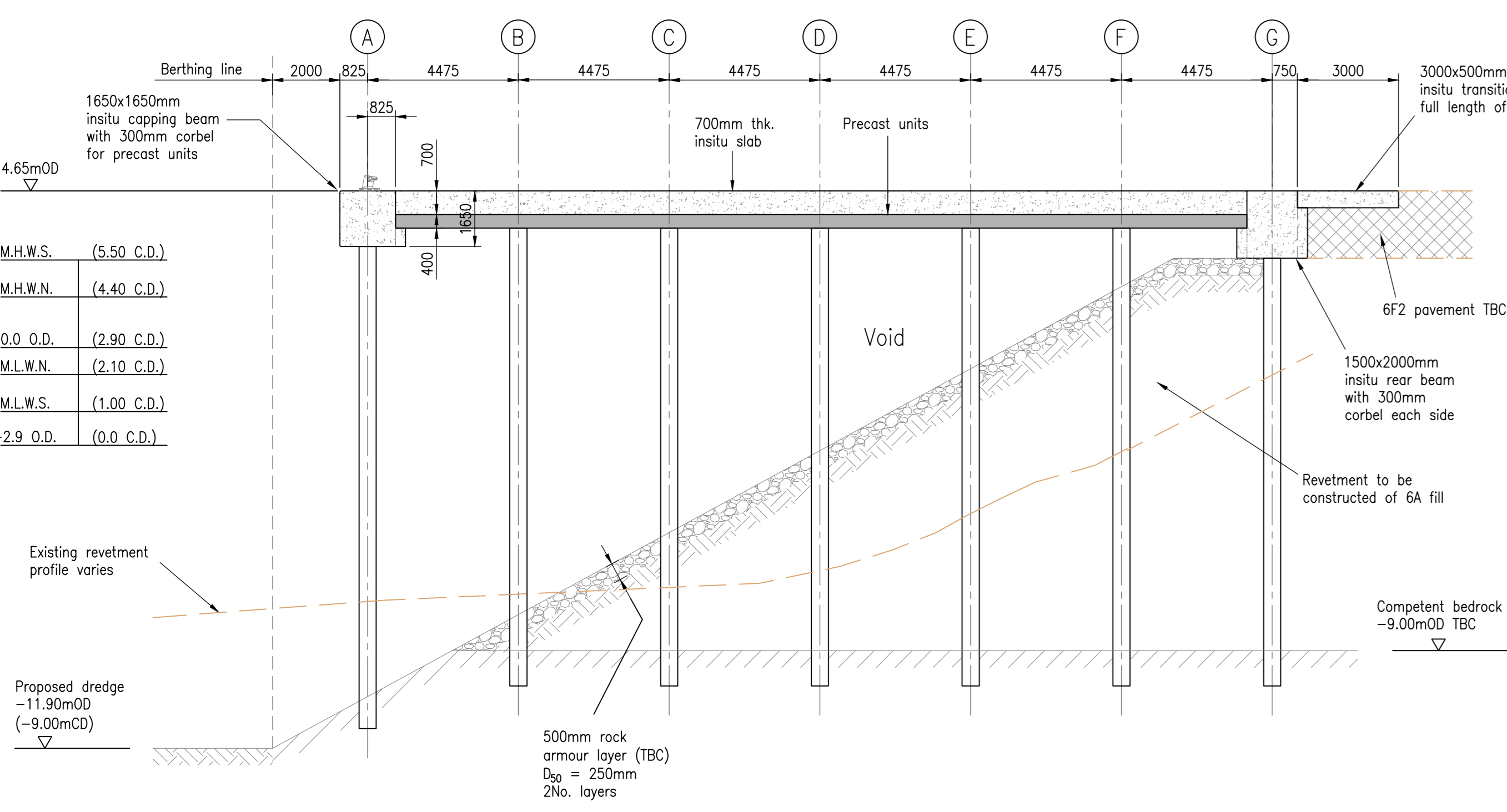
FOR INFORMATION RELATING TO USE, CLEANING AND MAINTENANCE SEE THE HEALTH AND SAFETY FILE

IT IS ASSUMED THAT ALL WORKS WILL BE CARRIED OUT BY A COMPETENT CONTRACTOR WORKING, WHERE APPROPRIATE, TO AN APPROVED METHOD STATEMENT.

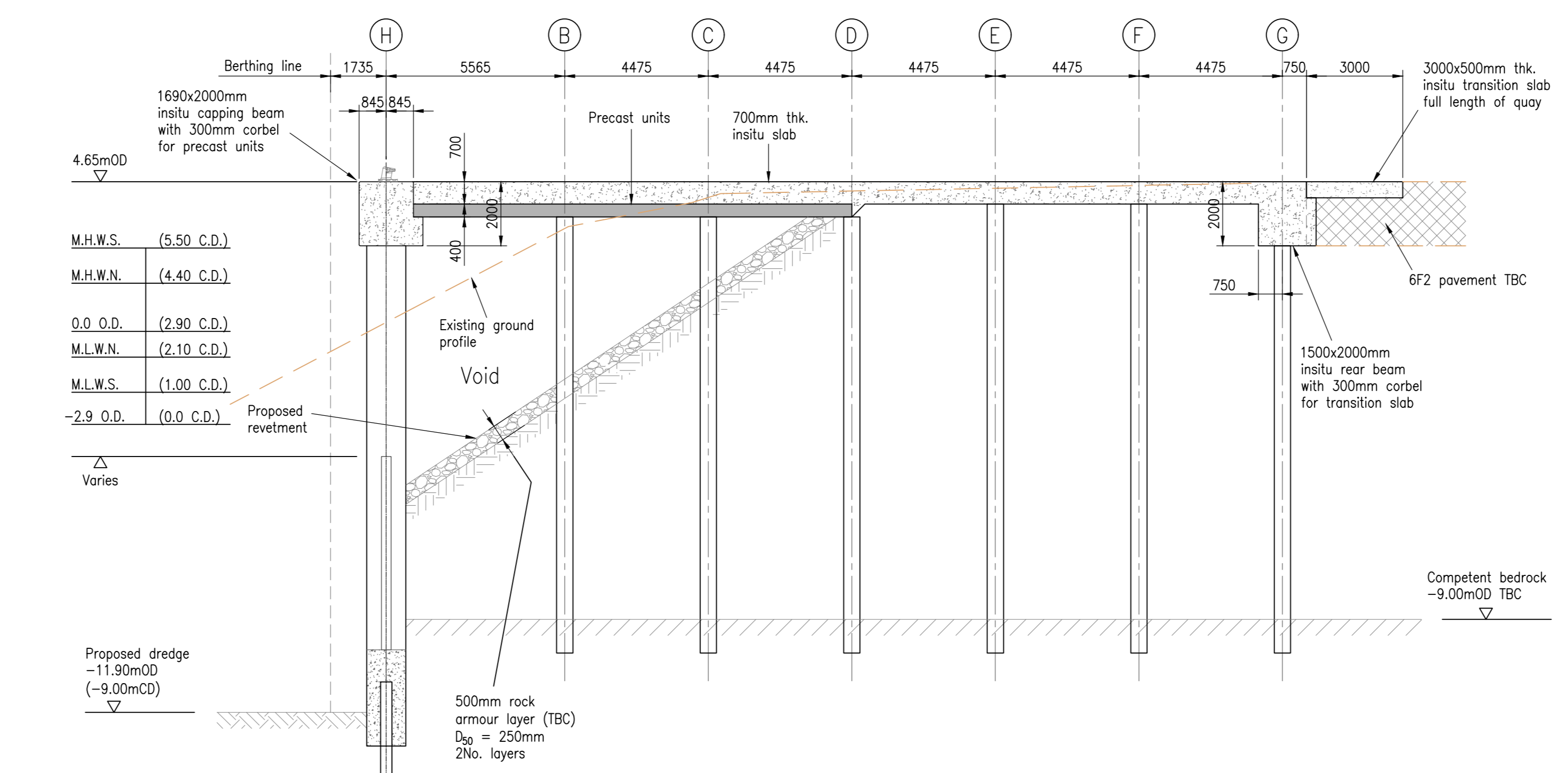
PRINCIPAL RESIDUAL DESIGN RISKS

- PILING OBSTRUCTIONS.
- CORRECT SEQUENCING TO ENSURE STABILITY.
- MAINTAIN CORRECT PILE GRID AROUND OBSTRUCTIONS.
- AS BUILT SURVEY PRIOR TO ORDERING REBAR.
- CAPWAP TESTING OF INITIAL 10% OF PILES AND ALSO ADDITIONAL 10% OF FINAL PILES.

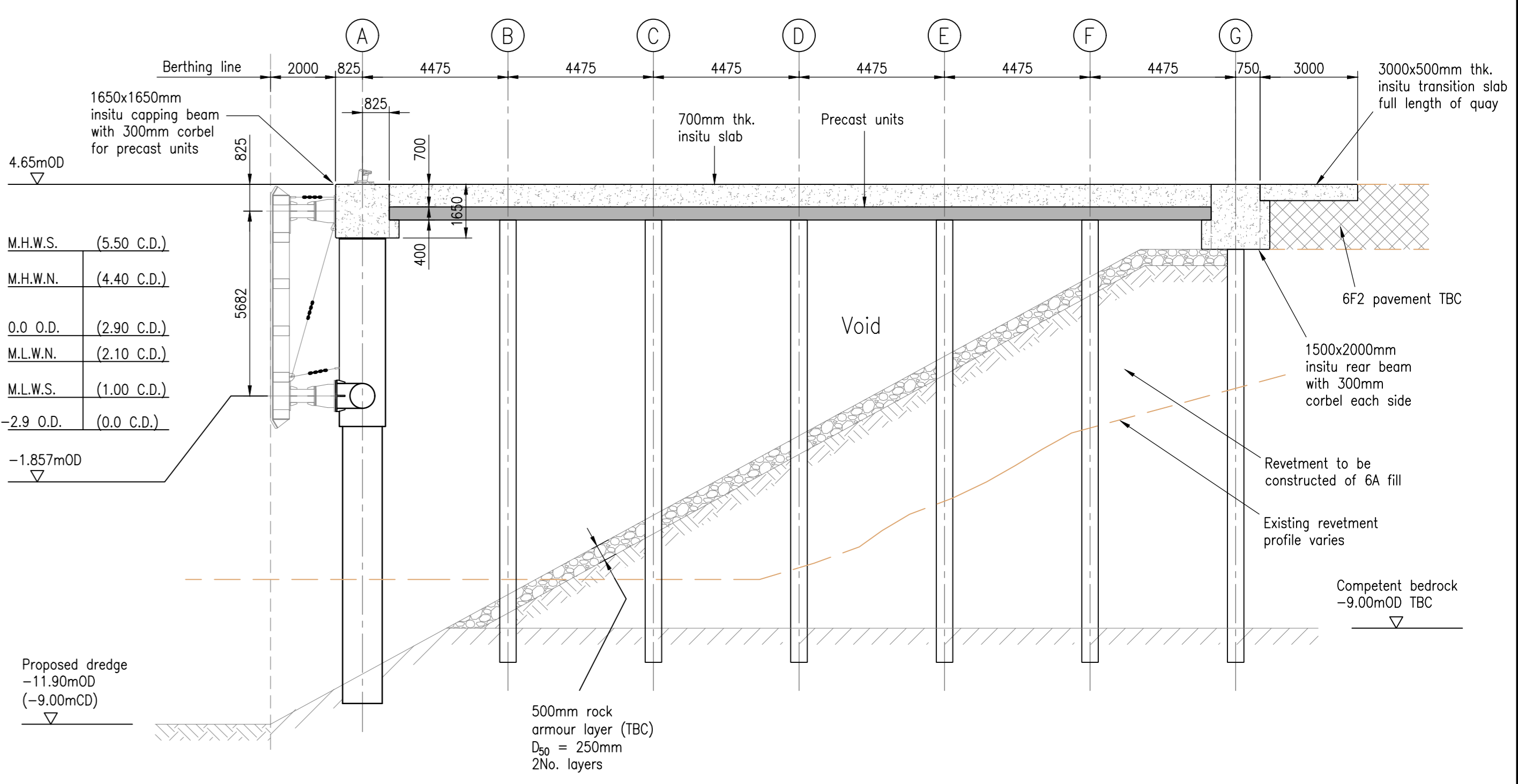
PLAN ON PROPOSED QUAY WORKS
Scale 1-200



SECTION A-A
Scale 1-125



SECTION B-B
Scale 1-125



SECTION C-C
Scale 1-125

Rev	Date	Description	Drawn	Checked	Approved
A	22/05/19	EXISTING WHARF INDICATED, SECTION B-B & NOTES REVISED	SB	MC	SB

- Notes:
- C.D. = -2.90m O.D.
 - All levels shown are metres relative to O.D.
 - Indicates 508x116 (S355) pile TBC.
 - Indicates 1219x20 CHS pile (X65) c/w 1420x115 CHS sleeve UC pile/deck tie, section size TBC. Piles to be concrete filled full length.
 - Insitu deck concrete & P.C. concrete to be C40/50 to BS8500-1.
 - Contractor to confirm dimensions on site prior to construction.
 - Exposed steel below L.A.T. to be protected by a C.P. system. (Contractor design)
 - Bedrock level may vary from that shown. Refer to SI reports.
 - All exposed edges to have 25mm chamfer U.N.O.
 - Finish to exposed concrete surface to be light brush finish.
 - Capwap tests to be carried out on an agreed 20% of bearing piles, to 2.0 x SML.

For dolphin details refer to drawings 130143/4101 to 4104.
For RORO berth wall details refer to drawings 130143/4105 to 4109.
For PCW strengthening details refer to drawings 130143/4201 & 4202.

FORTH PORTS SCOTLAND

Project Title: **PORT OF DUNDEE DUNDEE EAST REDEVELOPMENT**

Scale of this AS SHOWN: For Information

Drawn	Checked	Approved
SB	MC	SB
Date	Date	Date
30/09/19		

Drawing No: **130143/4113**