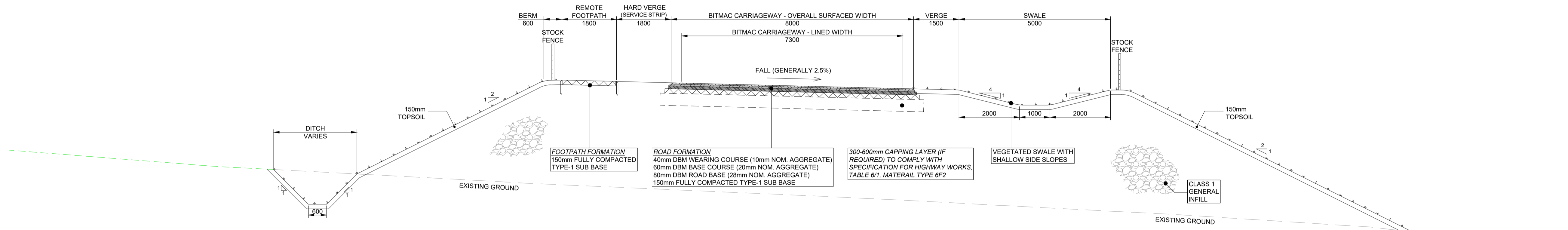
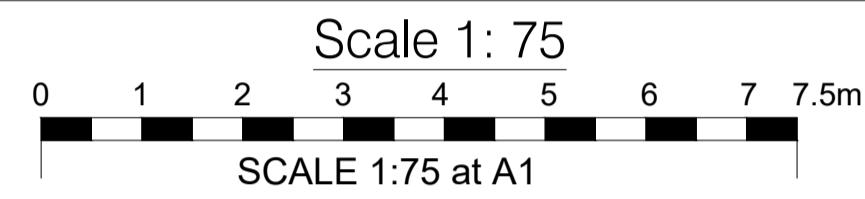
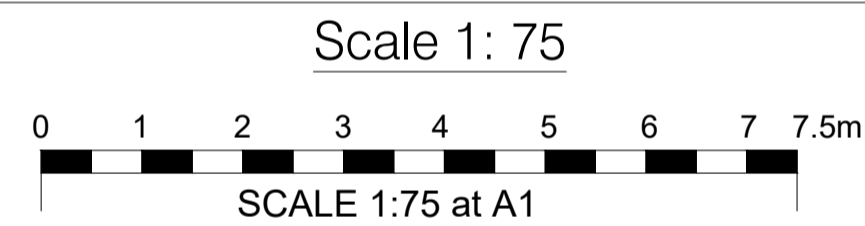


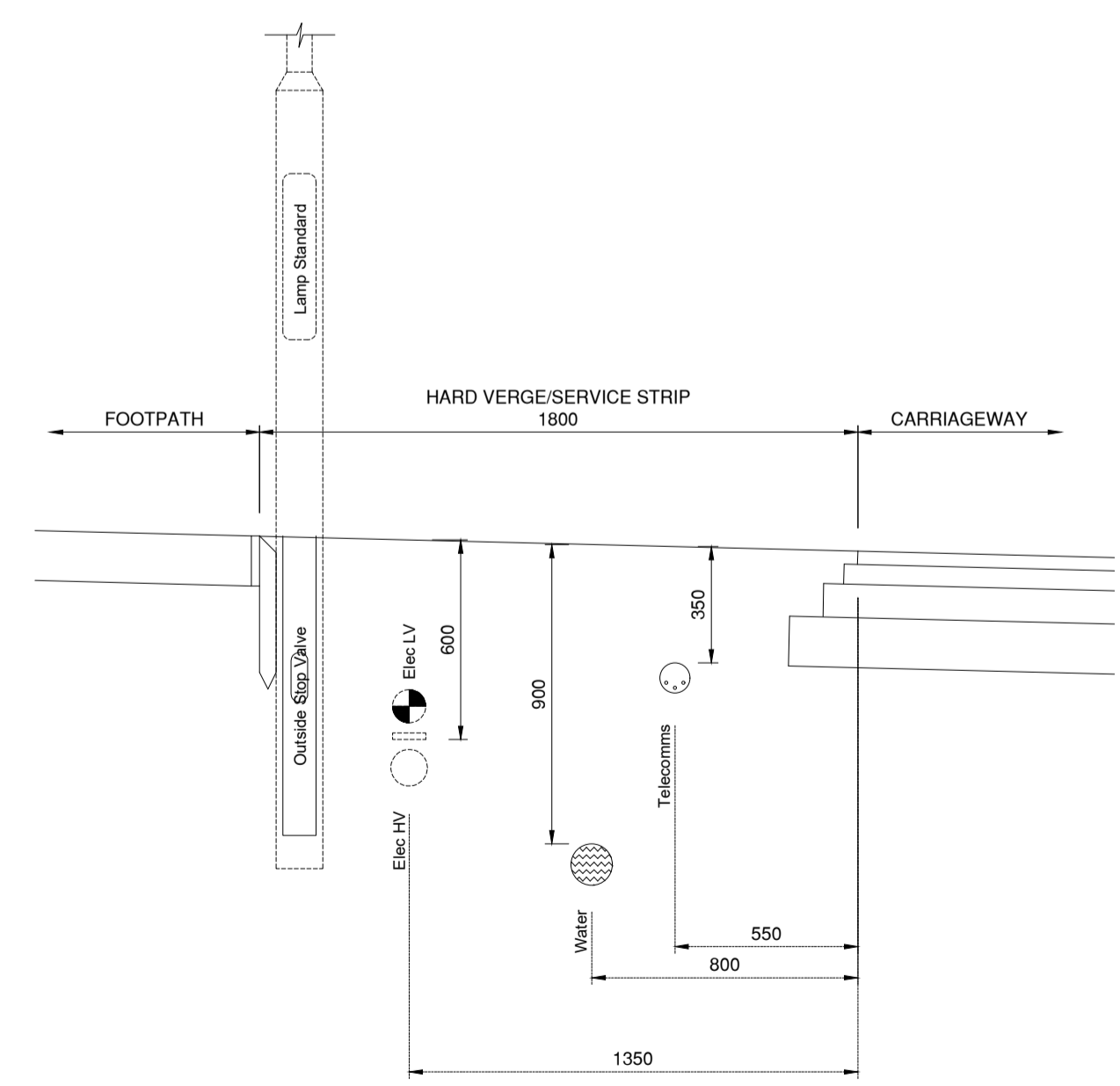
QUAY ACCESS ROAD - TYPICAL CUT SECTION



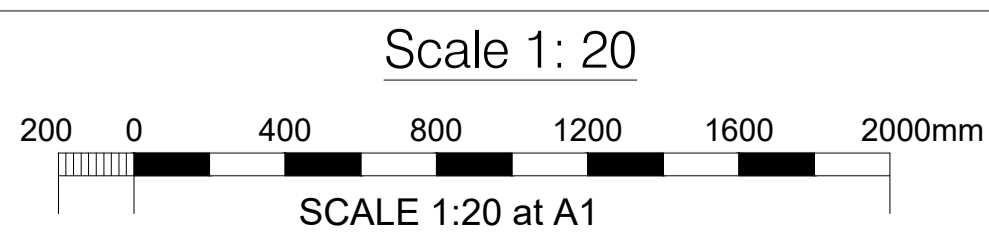
QUAY ACCESS ROAD - TYPICAL FILL SECTION



**ORKNEY ISLANDS COUNCIL
SCAPA DEEP WATER QUAY
SITE ACCESS ROAD
TYPICAL SECTIONS & DETAILS**



QUAY ACCESS ROAD - SERVICES LAYOUT



REV	DATE	REVISION	DRN	CHK
-	30.06.2023	E.I.A. Application Issue	JJM	APS

THIS DRAWING IS COPYRIGHT . DO NOT SCALE FROM THIS DRAWING.



Scapa Deep Water Quay Proposal
Site Access Road: Typical Sections & Details

Arch Henderson 1919

Civil Engineers
Structural Engineers
Architects
CDM Co-ordinators
Geotechnical services
Environmental services

Stewart Building, Lerwick, Shetland, ZE1 0LL.
Tel : 01595 695512
www.arch-henderson.co.uk - email : lerwick@arch-henderson.co.uk

Aberdeen, Dundee, Glasgow, Lerwick, Inverness, Thurso, Stromness, Southampton, Falkland Islands

DRAWN : PRN	DATE : June 2023	CHECKED : JJM	APPROVED : APS
SCALE : (A1) As Shown		DRAWING STATUS : EIA Application	
DRAWING No : 202042/EIA- 320			REV : -