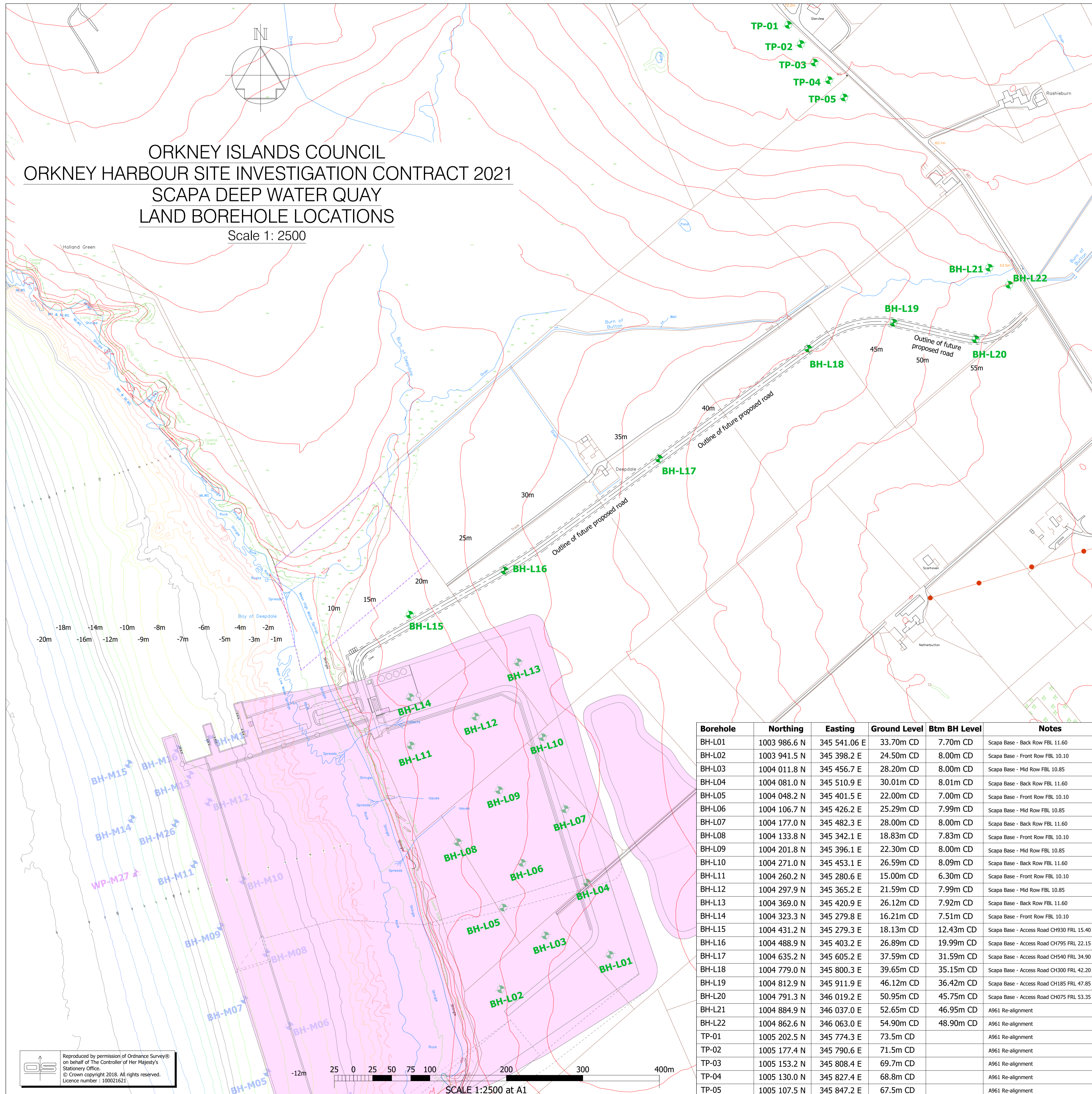


ORKNEY ISLANDS COUNCIL
 ORKNEY HARBOUR SITE INVESTIGATION CONTRACT 2021
 SCAPA DEEP WATER QUAY
 LAND BOREHOLE LOCATIONS

Scale 1: 2500



Borehole	Northing	Eastings	Ground Level	Btm BH Level	Notes
BH-L01	1003 986.6 N	345 541.06 E	33.70m CD	7.70m CD	Scapa Base - Back Row FBL 11.60
BH-L02	1003 941.5 N	345 398.2 E	24.50m CD	8.00m CD	Scapa Base - Front Row FBL 10.10
BH-L03	1004 011.8 N	345 456.7 E	28.20m CD	8.00m CD	Scapa Base - Mid Row FBL 10.85
BH-L04	1004 081.0 N	345 510.9 E	30.01m CD	8.01m CD	Scapa Base - Back Row FBL 11.60
BH-L05	1004 048.2 N	345 401.5 E	22.00m CD	7.00m CD	Scapa Base - Front Row FBL 10.10
BH-L06	1004 106.7 N	345 426.2 E	25.29m CD	7.99m CD	Scapa Base - Mid Row FBL 10.85
BH-L07	1004 177.0 N	345 482.3 E	28.00m CD	8.00m CD	Scapa Base - Back Row FBL 11.60
BH-L08	1004 133.8 N	345 342.1 E	18.83m CD	7.83m CD	Scapa Base - Front Row FBL 10.10
BH-L09	1004 201.8 N	345 396.1 E	22.30m CD	8.00m CD	Scapa Base - Mid Row FBL 10.85
BH-L10	1004 271.0 N	345 453.1 E	26.59m CD	8.09m CD	Scapa Base - Back Row FBL 11.60
BH-L11	1004 260.2 N	345 280.6 E	15.00m CD	6.30m CD	Scapa Base - Front Row FBL 10.10
BH-L12	1004 297.9 N	345 365.2 E	21.59m CD	7.99m CD	Scapa Base - Mid Row FBL 10.85
BH-L13	1004 369.0 N	345 420.9 E	26.12m CD	7.92m CD	Scapa Base - Back Row FBL 11.60
BH-L14	1004 323.3 N	345 279.8 E	16.21m CD	7.51m CD	Scapa Base - Front Row FBL 10.10
BH-L15	1004 431.2 N	345 279.3 E	18.13m CD	12.43m CD	Scapa Base - Access Road CH930 FRL 15.40
BH-L16	1004 488.9 N	345 403.2 E	26.89m CD	19.99m CD	Scapa Base - Access Road CH795 FRL 22.15
BH-L17	1004 635.2 N	345 605.2 E	37.59m CD	31.59m CD	Scapa Base - Access Road CH540 FRL 34.90
BH-L18	1004 779.0 N	345 800.3 E	39.65m CD	35.15m CD	Scapa Base - Access Road CH300 FRL 42.20
BH-L19	1004 812.9 N	345 911.9 E	46.12m CD	36.42m CD	Scapa Base - Access Road CH185 FRL 47.85
BH-L20	1004 791.3 N	346 019.2 E	50.95m CD	45.75m CD	Scapa Base - Access Road CH075 FRL 53.35
BH-L21	1004 488.9 N	346 037.0 E	52.65m CD	46.95m CD	A961 Re-alignment
BH-L22	1004 862.6 N	346 063.0 E	54.90m CD	48.90m CD	A961 Re-alignment
TP-01	1005 202.5 N	345 774.3 E	73.5m CD		A961 Re-alignment
TP-02	1005 177.4 N	345 790.6 E	71.5m CD		A961 Re-alignment
TP-03	1005 153.2 N	345 808.4 E	69.7m CD		A961 Re-alignment
TP-04	1005 130.0 N	345 827.4 E	68.8m CD		A961 Re-alignment
TP-05	1005 107.5 N	345 847.2 E	67.5m CD		A961 Re-alignment

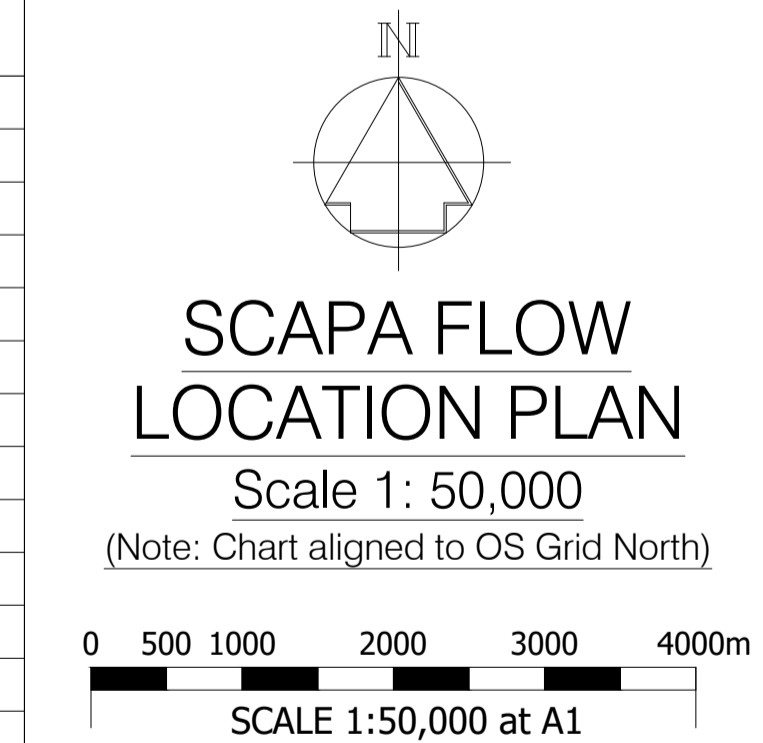
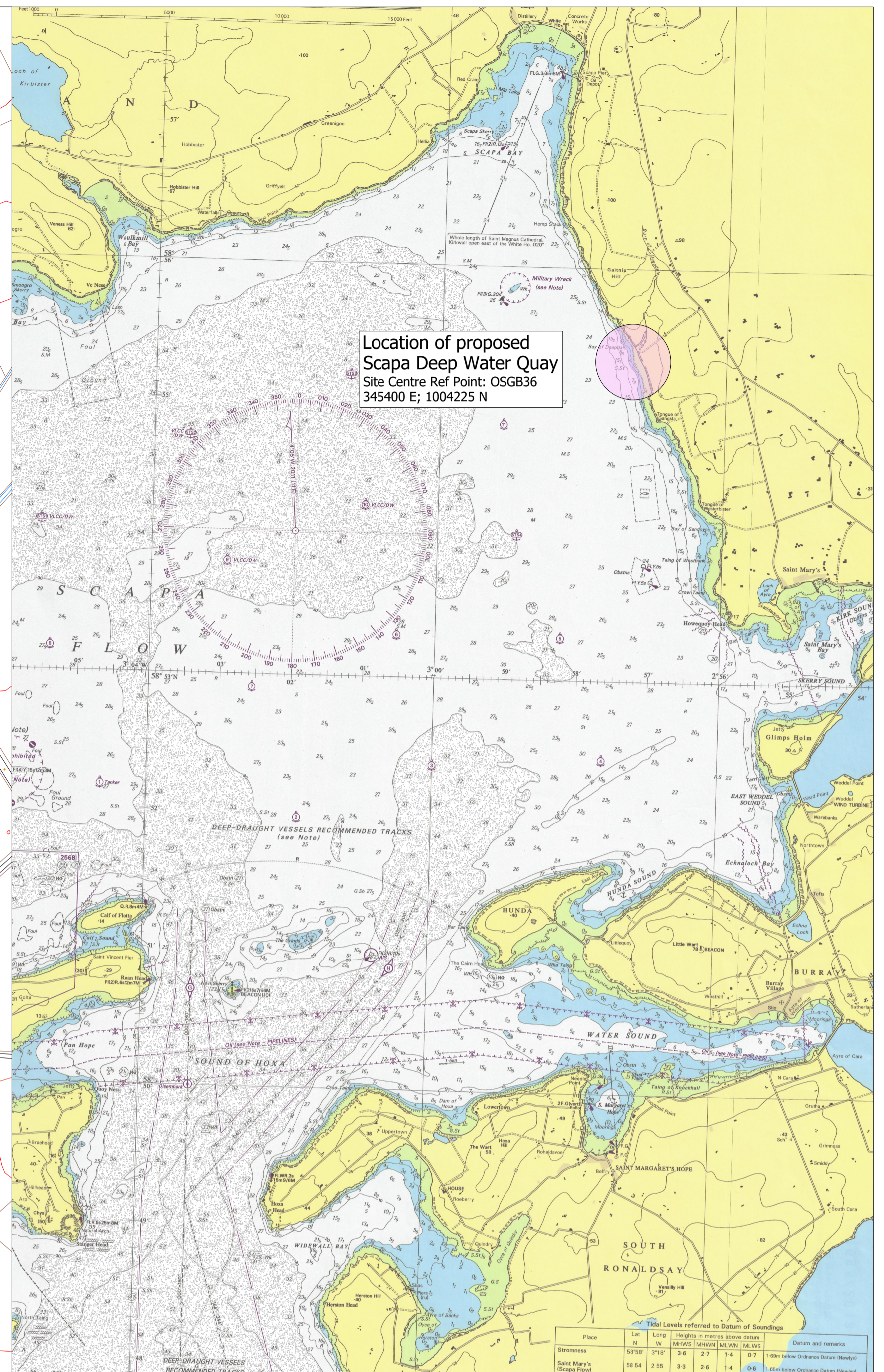


Chart Datum (Scapa Flow)	Ordnance Datum (Newlyn)	Quay Heights and Tide Data Scapa Deep Water Quay
+7.00m	+5.31m	Quay Edge Level
+3.60m	+1.91m	Mean High Water Spring Tides
+1.69m	0.00m	Ordnance Datum (Newlyn)
+0.70m	-0.99m	Mean Low Water Spring Tides
0.00m	-1.69m	Chart Datum (Scapa Flow)
-5.00m	-6.69m	
-10.00m	-11.69m	
-15.00m	-16.69m	
-20.00m	-21.69m	

REV	DATE	REVISION	DRN	CHK
-	16.05.2023	E.I.A. Application Issue	JJM	SSJ

THIS DRAWING IS COPYRIGHT. DO NOT SCALE FROM THIS DRAWING.



Scapa Deep Water Quay
 Site Investigation (2021)
 Land Borehole Layout

Arch Henderson 1919
 Civil Engineers
 Structural Engineers
 Architects
 CDM Co-ordinators
 Geotechnical services
 Environmental services

Stewart Building, Lerwick, Shetland, ZE1 0LL
 Tel : 01595 695512
 www.arch-henderson.co.uk - email : lerwick@arch-henderson.co.uk

Aberdeen, Dundee, Glasgow, Lerwick, Inverness, Thurso, Stromness, Southampton, Falkland Islands

DRAWN	DATE	CHECKED	APPROVED
PRN	May 2023	SSJ	APS

SCALE: (A1) As Shown DRAWING STATUS: EIA Application

DRAWING No : 202042/EIA- 106 REV: -

Reproduced by permission of Ordnance Survey® on behalf of The Controller of Her Majesty's Stationery Office.
 © Crown copyright 2018. All rights reserved.
 Licence number : 100021621